

Consumer Price Index, base period June 2019

December 2025

The Central Bureau of Statistics presents the main findings for the Consumer Price Index (CPI) for the month of December 2025.

Inflation
MonthlyNov-25 vs Dec-25
109.03 vs 109.47**0.4%**

(1 month)

Inflation
End of periodDec-24 vs Dec-25
109.07 vs 109.47**0.4%**

(12 months)

Inflation
Period averageDec 23/24 vs Dec 24/25
109.18 vs 109.27**0.1%**

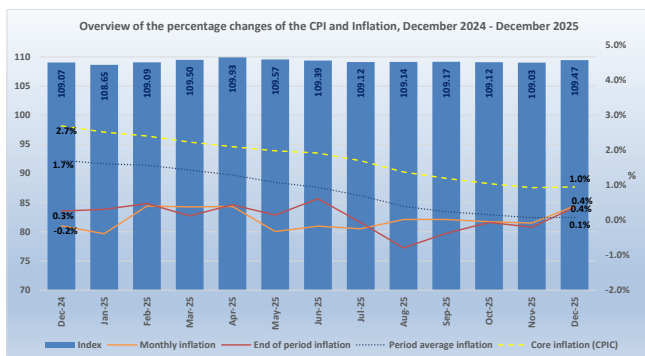
(24 months)

Consumer Price Index for the month of
December 2025

The CPI for December 2025 (109.47) shows an increase of 0.4% compared to the index of November 2025 (109.03).

The percentage change of the CPI over the last twelve (12) months (December 2024 to December 2025) is 0.4%, an increase of 0.1 percentage point (ppt) compared to the percentage change for the same period of last year (0.3%).

The period average (last 24 months) percentage change of the CPI for the periods December 2023 to December 2024 and December 2024 to December 2025 is 0.1%, a decrease of 1.6 ppts compared to the period average percentage change over the periods December 2022 to December 2023 and December 2023 to December 2024 (1.7%).

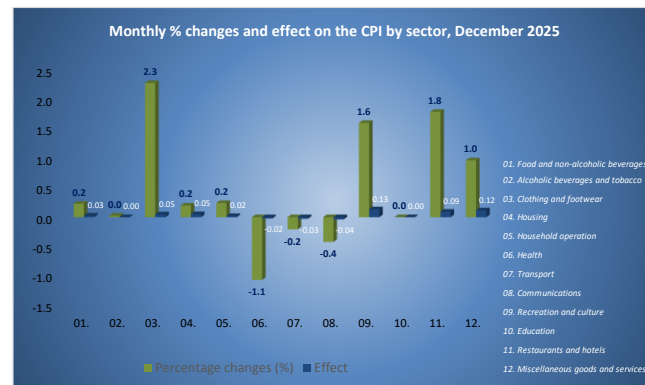


During this month, eight (8) of the twelve (12) sectors registered increases in prices. The increases that had the greatest influence on the CPI were registered for the "Recreation and culture" (1.6%), "Miscellaneous goods and services" (1.0%) and "Restaurants and hotels" (1.8%) sectors, which contributed respectively to an effect of 0.13, 0.12 and 0.09 ppts. The increases in the remaining sectors had an effect of 0.15 ppts for the CPI of December 2025.

Aforementioned increases were partially offset mainly by decreases in the indices for the "Communications" (-0.4%) and "Transport" (-0.2%) sectors, which contributed with an effect of respectively -0.04 and -0.03 ppts. The decrease in the remaining sector had an effect of -0.02 ppts for the CPI of December 2025.

The increase in the "Recreation and culture" sector was mainly due to an increase of 11.7% in the category "Holidays", which contributed to an effect of 0.21 ppts. The increase in the "Miscellaneous goods and services" sector was mainly due to an increase in the category "Personal effects n.e.c." (6.8%), which contributed to an effect of 0.09 ppts. The increase in the "Restaurants and hotels" sector was mainly due to an increase of 52.2% in the category "Accommodation services", which contributed to an effect of 0.08 ppts.

The decrease in the "Communications" sector was due to a decrease in the category "Telephone and telefax equipment" (-6.5%), which contributed to an effect of -0.04 ppts. The decrease in the "Transport" sector was due to a decrease of 3.7% in the category "Purchase of vehicles", which contributed to an effect of -0.17 ppts.



Consumption basket

The consumption basket of the CPI consists of 408 goods and services. Compared to November 2025, 47.5% of these products had an increase in price, causing an effect of 1.12 ppts, while 36.8% showed a decrease, contributing to an effect of -0.71 ppts and the remaining 15.7% had no change in price. Compared to November 2025 the prices of goods (-0.1%) show a decrease and caused an influence of -0.07 ppts, while the prices of services (1.1%) show an increase and contributed with an effect of 0.48 ppts for the CPI of December 2025.

CPI (BASE JUN 2019 = 100)										December-2025			CPIC			SUBSISTENCE LEVEL		
Month	Year	Index	Avg. Index	Monthly	Year-to-date	End of period	Period average	Goods	Services	CPIC	Energy	Food	1 adult	2 adults	+ 2 children			
December	2025	109.47 ↑	109.27 ↑	0.4	↑	0.4	↑	0.4	↑	1.0	↑	-3.8 ↓	2,636	↑	5,537	↑		
November	2025	109.03 ↓	109.23 ↑	-0.1	↓	-0.04	↓	-0.2	↓	0.9	↑	-3.9 ↓	2,628	↓	5,519	↓		
December	2024	109.07	109.18	-0.2	0.3	0.3	1.7	-0.4	0.2	2.7	↓	-2.7	2,624		5,511			

Press Release: Consumer Price Index December 2025

Core inflation

The CPIC (core inflation) - CPI excluding the effect of energy and food – was 1.0% in December 2025. The energy index - which consists of the products: electricity, water, gasoline and diesel – was -3.8% The food index showed an increase of 0.3%.

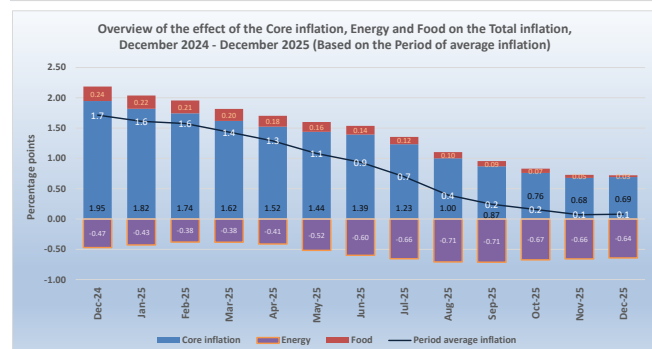
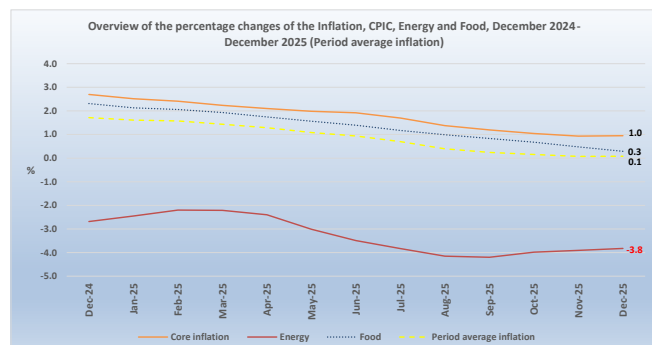
What is CPIC?

The CPIC (core inflation) is a portion of the inflation where certain items, which have volatile price movements, are excluded, such as food products and energy. When calculating the core inflation, the most volatile components are eliminated from the inflation. The core inflation index is used to assess the medium and long-term trends of the general level of prices. For purposes of economic policymaking, especially monetary policy, many economists focus on the proportion of the core inflation, as this allows a more in-depth evaluation of the recent inflation developments in the economy. The annual average of the CPI is used to calculate the CPIC.

The CPIC is calculated by comparing the average index for the most recent 12-month period compared with the preceding 12-month period.

The three main uses of a CPI are:

1. a calculation method to compensate employees due to the loss of purchasing power, adjusting their salaries, with the percentage change rate of the CPI, which is known as indexation.
2. a tool used in National Accounts to adjust components of the gross domestic product (GDP) from nominal terms to real terms. (For example, by eliminating the effect of the price changes from the consumption value)
3. a means commonly used by governments and central banks to set inflation targets.



Subsistence level

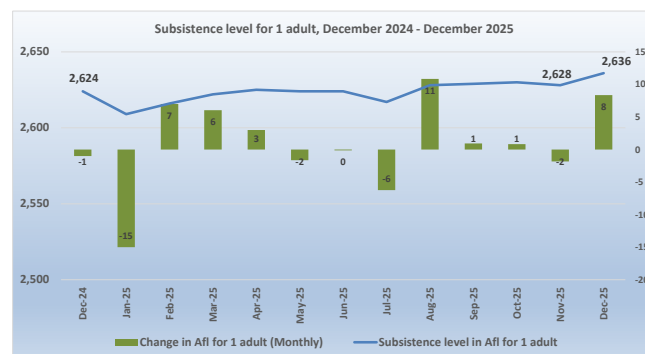
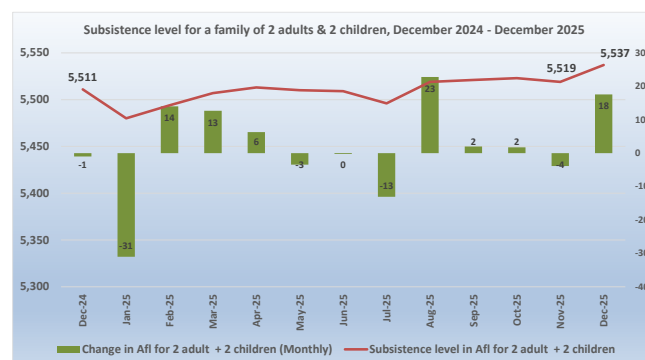
The subsistence level for a household consisting of two (2) adults and two (2) children (aged 0-14) in December 2025 is Afl. 5,537, an increase of Afl. 18 compared to November 2025 (Afl. 5,519). The subsistence level for a single adult household is Afl. 2,636, an increase of Afl. 8 compared to November 2025 (Afl. 2,628).

What is the Subsistence level and how is it adjusted?

The CBS defines the subsistence level as the minimum level of income that is perceived as necessary for a person or family to be able to function in the society in an adequate and socially acceptable manner. When the definition of subsistence level is used, it refers in reality to a "Social subsistence level" and not the literal definition "the money needed to purchase those goods and services deemed necessary for living a life free of basic deprivation" (United Nations).

A subsistence level index was created by calculating the cost of the essential resources that an average adult consumes during a month. Each month this index is adjusted, based on the prices of food, clothing, shelter, transportation, and other items in the basket.

The current subsistence level is based on the "Subsistence level 2010" report published by the CBS in December 2010, and is updated monthly according to the CPI. The reference unit used in this report is of a household consisting of two adults and two children (aged 0-14). The total weight of such a household is 2.1 (1.0 + 0.5 + 0.3 + 0.3).



The subsistence level in December 2025

The subsistence level is the minimum level of income which is perceived necessary to achieve an adequate standard of living in a given country. The subsistence level is usually determined by estimating the cost of all the essential resources that an average adult consumes in one month or year. This is commonly called a basic needs index, and varies according to the price of food, clothing, housing, transport and other items in the "basket". Equivalent scales are used to adjust the assumed standard of living, of households of different sizes and composition. The scale assigns a weight of 1.0 for the first adult and 0.5 for each additional adult in the household (aged 15+) and a weight of 0.3 for each child (aged 0-14). The subsistence level is based on figures of the report "Bestaansminimum 2010" and is monthly updated for inflation using the monthly CPI. The reference unit used in this report is a household consisting of two (2) adults and two (2) children (aged 0-14).

In December 2025 the monthly subsistence level for a household consisted of two (2) adults and two (2) children (aged 0-14) (Afl. 5,537) showed an increase of Afl. 26 compared to December 2024 (Afl. 5,511) and was mainly caused by increases of Afl. 27 and Afl. 17 in the sectors "Housing" and "Food and non-alcoholic beverages". The largest decrease in December 2025 was registered in the sector "Clothing and footwear" (Afl. -16).

Table 1 Monthly subsistence level in Aruba (in Afl.) by sector
for a family of 2 adults and 2 children (aged 0-14)

December 2024 vs December 2025

Sector	Dec-24	Dec-25	Absolute Change
Food and non-alcoholic beverages	2,323	2,341	17
Clothing and footwear	246	230	-16
Housing	1,637	1,663	27
Household operation	115	110	-5
Health	87	82	-4
Transport	326	326	0
Communications	171	175	4
Recreation and culture	158	153	-5
Education	97	99	2
Miscellaneous goods and services	350	357	6
Total	5,511	5,537	26

Source: Central Bureau of Statistics Aruba

Table 2 Monthly Subsistence level in Aruba (in Afl.) by family
size and composition, (Base period Oct. 2010) for the period:

December 2024 - December 2025

Period	Equivalence scale				
	1	1.3	1.5	1.8	2.1
	1 adult	1 adult + 1 child	2 adults	2 adults + 1 child	2 adults + 2 children
Dec-24	2,624	3,411	3,936	4,723	5,511
Jan-25	2,609	3,392	3,914	4,697	5,480
Feb-25	2,616	3,401	3,924	4,709	5,494
Mar-25	2,622	3,409	3,933	4,720	5,507
Apr-25	2,625	3,413	3,938	4,726	5,513
May-25	2,624	3,411	3,935	4,723	5,510
Jun-25	2,624	3,411	3,935	4,722	5,509
Jul-25	2,617	3,403	3,926	4,711	5,496
Aug-25	2,628	3,417	3,942	4,731	5,519
Sep-25	2,629	3,418	3,944	4,732	5,521
Oct-25	2,630	3,419	3,945	4,734	5,523
Nov-25	2,628	3,417	3,942	4,731	5,519
Dec-25	2,636	3,427	3,955	4,746	5,537

Source: Central Bureau of Statistics Aruba

In December 2025, the monthly subsistence level for a single adult household is Afl. 2,636, which represents an income deficit of Afl. 650, an increase of Afl. 12 compared to the deficit observed one year ago (Afl. 638). This deficit is the third highest registered over a period of six (6) years for the month of December.

Tabel 3 Monthly income surplus/deficit (in Afl.) for
a single adult household

December, 2020 - 2025

Period	1 adult	Minimum wage	Surplus/deficit
2020	2,265	1,815	-450
2021	2,337	1,815	-522
2022	2,560	1,815	-745
2023	2,600	1,893	-706
2024	2,624	1,986	-638
2025	2,636	1,986	-650

Source: Central Bureau of Statistics Aruba

Press Release: Consumer Price Index December 2025

Table 4 Overview of the percentage changes of the CPI and the subsistence level, December 2024 - December 2025 (Jun 2019=100)

	Dec-24	Jan-25	Feb-25	Mar-25	Apr-25	May-25	Jun-25	Jul-25	Aug-25	Sep-25	Oct-25	Nov-25	Dec-25
Index CPI													
CPI (Monthly)	109.07	108.65	109.09	109.50	109.93	109.57	109.39	109.12	109.14	109.17	109.12	109.03	109.47
CPI (12-month average)	109.18	109.21	109.25	109.26	109.30	109.31	109.37	109.36	109.29	109.26	109.25	109.23	109.27
Percentage changes													
Monthly	-0.2	-0.4	0.4	0.4	0.4	-0.3	-0.2	-0.2	0.0	0.0	0.0	-0.1	0.4
Year-to-date	0.3	-0.4	0.0	0.4	0.8	0.5	0.3	0.0	0.1	0.1	0.0	0.0	0.4
End of period	0.3	0.3	0.5	0.1	0.4	0.1	0.6	-0.1	-0.8	-0.4	-0.1	-0.2	0.4
Period average	1.7	1.6	1.6	1.4	1.3	1.1	0.9	0.7	0.4	0.2	0.2	0.1	0.1
Index Goods													
Goods (Monthly)	108.35	107.88	108.65	109.08	109.97	109.17	109.08	108.45	108.60	108.39	108.32	108.20	108.06
Goods (12-month average)	109.02	109.03	109.07	109.08	109.12	109.07	109.12	109.10	108.94	108.81	108.73	108.68	108.65
Percentage changes													
Monthly	-0.4	-0.4	0.7	0.4	0.8	-0.7	-0.1	-0.6	0.1	-0.2	-0.1	-0.1	-0.1
Year-to-date	0.1	-0.4	0.3	0.7	1.5	0.8	0.7	0.1	0.2	0.0	0.0	-0.1	-0.3
End of period	0.1	0.1	0.4	0.1	0.4	-0.5	0.5	-0.3	-1.7	-1.4	-0.9	-0.6	-0.3
Period average	0.4	0.5	0.7	0.8	0.8	0.7	0.8	0.5	0.1	-0.1	-0.2	-0.3	-0.3
Index Services													
Services (Monthly)	110.07	109.72	109.70	110.10	109.88	110.13	109.82	110.06	109.90	110.25	110.23	110.18	111.43
Services (12-month average)	109.40	109.45	109.50	109.51	109.56	109.65	109.71	109.73	109.78	109.88	109.98	110.00	110.12
Percentage changes													
Monthly	0.2	-0.3	0.0	0.4	-0.2	0.2	-0.3	0.2	-0.1	0.3	0.0	0.0	1.1
Year-to-date	0.5	-0.3	-0.3	0.0	-0.2	0.1	-0.2	0.0	-0.2	0.2	0.1	0.1	1.2
End of period	0.5	0.6	0.5	0.1	0.6	1.0	0.7	0.2	0.5	1.1	1.0	0.3	1.2
Period average	3.6	3.2	2.8	2.4	1.9	1.6	1.2	0.9	0.7	0.7	0.7	0.6	0.7
Indices CPIC, Energy & Food													
CPIC (12-month average)	107.55	107.62	107.71	107.80	107.96	108.12	108.31	108.40	108.40	108.44	108.49	108.50	108.57
Energy (12-month average)	111.88	111.71	111.49	111.15	110.68	110.01	109.49	109.07	108.59	108.17	107.94	107.73	107.60
Food (12-month average)	117.07	117.13	117.22	117.26	117.26	117.26	117.29	117.29	117.32	117.34	117.35	117.38	117.41
Percentage changes													
CPIC (Period average)	2.7	2.5	2.4	2.2	2.1	2.0	1.9	1.7	1.4	1.2	1.0	0.9	1.0
Energy (Period average)	-2.7	-2.4	-2.2	-2.2	-2.4	-3.0	-3.5	-3.8	-4.2	-4.2	-4.0	-3.9	-3.8
Food (Period average)	2.3	2.1	2.1	1.9	1.7	1.6	1.4	1.2	1.0	0.8	0.7	0.5	0.3
Subsistence level (Monthly) in Afl													
1 adult	2,624	2,609	2,616	2,622	2,625	2,624	2,624	2,617	2,628	2,629	2,630	2,628	2,636
2 adults + 2 children	5,511	5,480	5,494	5,507	5,513	5,510	5,509	5,496	5,519	5,521	5,523	5,519	5,537
Changes in Afl													
1 adult (Monthly)	-1	-15	7	6	3	-2	0	-6	11	1	1	-2	8
1 adult (Yearly)	24	8	15	6	8	8	17	-1	3	-2	1	3	12
2 adults + 2 children (Monthly)	-1	-31	14	13	6	-3	0	-13	23	2	2	-4	18
2 adults + 2 children (Yearly)	51	18	32	13	16	17	36	-3	5	-5	3	7	26

Source: Central Bureau of Statistics Aruba

Table 5 Percentage change by sector

December 2025		Percentage changes (%)				
Sector	Weight coefficient	Effect Nov - Dec	Monthly			
			Nov - Dec	Dec - Dec	Dec 24 - Dec 25	Dec 23/24 - Dec 24/25
CPI	10,000.0	0.40	0.4	0.4	0.4	0.1
01. Food and non-alcoholic beverages	1,087.7	0.03	0.2	0.8	0.8	0.6
02. Alcoholic beverages and tobacco	78.2	0.00	0.0	1.1	1.1	0.5
03. Clothing and footwear	276.8	0.05	2.3	-6.6	-6.6	-2.6
04. Housing	2,522.2	0.05	0.2	1.6	1.6	0.5
05. Household operation	929.2	0.02	0.2	-3.9	-3.9	-1.6
06. Health	223.1	-0.02	-1.1	-4.9	-4.9	0.8
07. Transport	1,257.4	-0.03	-0.2	-0.1	-0.1	-0.8
08. Communications	849.6	-0.04	-0.4	2.3	2.3	2.1
09. Recreation and culture	1,013.3	0.13	1.6	-3.3	-3.3	-3.3
10. Education	98.0	0.00	0.0	2.2	2.2	1.1
11. Restaurants and hotels	442.0	0.09	1.8	6.3	6.3	4.0
12. Miscellaneous goods and services	1,222.6	0.12	1.0	1.8	1.8	0.5

Source: Central Bureau of Statistics Aruba

Table 6 Categories with the greatest positive effect on the CPI

December 2025	Monthly change	Effect
Category		
Holidays	11.7	0.21
Transport services	25.8	0.11
Furniture, furnishings, carpets and other floor coverings	11.6	0.09
Personal effects n.e.c.	6.8	0.09
Accommodation services	52.2	0.08

Source: Central Bureau of Statistics Aruba

Table 7 Categories with the greatest negative effect on the CPI

December 2025	Monthly change	Effect
Category		
Purchase of vehicles	-3.7	-0.17
Tools and equipment for house and garden	-7.7	-0.06
Audio-visual, photographic and information processing equipment	-13.5	-0.05
Other major durables for recreation and culture	-17.0	-0.04
Telephone and telefax equipment	-6.5	-0.04

Source: Central Bureau of Statistics Aruba

Change in prices of crude oil, utilities, gasoline and diesel in December 2025

The prices of utilities (electricity and water), gasoline and diesel are for the greater part determined by international crude oil prices. In December 2025 the average price per barrel of crude oil (US\$ 58.02) had a decrease of US\$ 1.98 (-3.3%) compared to November 2025 (US\$ 60.00).

The prices of electricity and water did not change compared to November 2025. Subsequently, the average electricity price per household remained at Afl. 263.67, while the average price of water per household remained at Afl. 168.73.

In December 2025 the price of gasoline registered an increase of Afl. 2.00 cents (0.9%) and had an effect of 0.04 ppts on the CPI. The price of diesel registered an increase of Afl. 8.50 cents (4.3%) and had an effect of 0.01 ppt for the CPI of December 2025.

In December 2025, utilities, gasoline and diesel as a group, showed an increase in price of 0.3% compared to November 2025, and had an effect of 0.05 ppts on the CPI, while the remaining 404 goods and services, as a group, show an increase of 0.4% and had an effect of 0.35 ppts on the CPI.

Table 9 Effect on the CPI of goods and services which are dependent on crude oil prices

December 2025	Weight	Monthly		Yearly	
		Nov-25 vs Dec-25		Dec-24 vs Dec-25	
Category	Weight	Change %	Effect	Change %	Effect
Electricity	810.2	0.0	0.00	0.0	0.00
Gasoline	430.5	0.9	0.04	-5.3	-0.24
Water	367.3	0.0	0.00	0.0	0.00
Diesel	30.2	4.3	0.01	-0.7	0.00
Total group	1,638.1	0.3	0.05	-1.5	-0.24
Remaining goods and services	8,361.9	0.4	0.35	0.7	0.60
CPI	10,000.0	0.4	0.40	0.4	0.36

Source: Central Bureau of Statistics Aruba

Table 8 Prices of crude oil, utilities, gasoline and diesel, 2024 - 2025

Month	2024							2025						
	Total			Total				Total			Total			
	Crude oil	energy charge ≤ 500 kWh	energy charge 501-1000 kWh	Electricity	Water	Gasoline	Diesel	Crude oil	energy charge ≤ 500 kWh	energy charge 501-1000 kWh	Electricity	Water	Gasoline	Diesel
January	73.56	35.80	36.84	274.57	168.73	232.90	213.60	75.32	34.31	35.31	263.67	168.73	233.50	204.90
February	76.93	35.80	36.84	274.57	168.73	245.40	227.80	71.56	34.31	35.31	263.67	168.73	241.70	218.20
March	81.01	35.80	36.84	274.57	168.73	255.60	236.40	68.06	34.31	35.31	263.67	168.73	241.00	216.10
April	85.50	35.80	36.84	274.57	168.73	266.90	230.10	64.22	34.31	35.31	263.67	168.73	239.90	206.20
May	80.31	35.80	36.84	274.57	168.73	269.00	228.20	62.08	34.31	35.31	263.67	168.73	224.50	188.00
June	79.89	35.80	36.84	274.57	168.73	257.60	217.70	68.60	34.31	35.31	263.67	168.73	226.70	185.60
July	82.57	35.80	36.84	274.57	168.73	251.60	218.50	67.94	34.31	35.31	263.67	168.73	229.00	196.70
August	76.79	35.80	36.84	274.57	168.73	257.60	220.70	65.67	34.31	35.31	263.67	168.73	228.90	204.60
September	70.30	35.80	36.84	274.57	168.73	251.20	210.20	63.99	34.31	35.31	263.67	168.73	228.90	196.40
October	72.48	35.80	36.84	274.57	168.73	234.90	201.40	61.04	34.31	35.31	263.67	168.73	228.70	200.00
November	69.60	34.31	35.31	263.67	168.73	238.40	206.20	60.00	34.31	35.31	263.67	168.73	219.20	195.60
December	69.94	34.31	35.31	263.67	168.73	233.70	205.60	58.02	34.31	35.31	263.67	168.73	221.20	204.10
Yearly Average	76.57	35.55	36.59	272.76	168.73	249.57	218.03	65.54	34.31	35.31	263.67	168.73	230.27	201.37

Source: Central Bureau of Statistics Aruba

¹ Average West Texas Intermediate (WTI) crude oil price per barrel in US\$ (Source: U.S. Energy Information Administration)

² Total energy charge in Afl. cents per kWh

³ Electricity price in Afl. is based on an average household usage of 725.5 kWh

⁴ Water price in Afl. is based on an average household usage in m³

⁵ Gasoline and diesel prices in Afl. cents per liter

Change in prices of Food & Catering Services in December 2025

The “Food & catering services” index showed an increase of 0.2% in December 2025, after having increased 0.4% in November 2025. The index for “Food at home” showed an increase of 0.2% in December, as six (6) of the eleven (11) “Food at home” indices increased in December 2025. The “Fruit” index registered the largest increase (3.5%) in December 2025. Furthermore, other significant increases were posted in the indices for “Potatoes and other tubers” (2.2%), “Milk, cheese and eggs” (0.7%) and “Food products n.e.c.” (0.6%).

The largest decrease in December 2025 was registered for the index of “Fish and other seafood” (-2.2%).

The index for “Food away from home” shows an increase of 0.3% in December 2025.

In December 2025, “Food at home” and “Food away from home” as a group showed an increase in price of 0.2% compared to November 2025 and had an effect of 0.04 ppts on the CPI, while the remaining goods and services, as a group, experienced an increase in price of 0.4%, causing an effect of 0.36 ppts on the CPI.

Table 11 Effect on the CPI of Food at home and Food away from home
December 2025

Category	Weight	Monthly Nov-25 vs Dec-25		Yearly Dec-24 vs Dec-25	
		Change %	Effect	Change %	Effect
<i>Food at home</i>	1,087.7	0.2	0.03	0.8	0.09
<i>Food away from home</i>	429.8	0.3	0.01	3.7	0.18
<i>Total group</i>	1,517.5	0.2	0.04	1.6	0.27
<i>Remaining goods and services</i>	8,482.5	0.4	0.36	0.1	0.10
<i>CPI</i>	10,000.0	0.4	0.40	0.4	0.36

Source: Central Bureau of Statistics Aruba

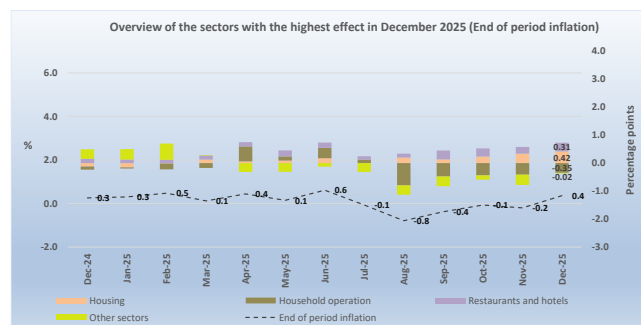
Table 10 Percentage change for Food & catering services

December 2025	Weight coefficient	Indices			Percentage changes			Effect	
		Dec-24	Nov-25	Dec-25	Monthly Oct - Nov	Monthly Nov - Dec	End of period Dec 24 - Dec 25	Monthly Nov - Dec	End of period Dec 24 - Dec 25
Food & catering services	1,517.5	120.38	122.01	122.30	0.4	0.2	1.6	0.040	0.268
Food at home	1,087.7	118.98	119.61	119.88	0.4	0.2	0.8	0.027	0.089
Bread and cereals	178.1	121.96	122.22	121.85	0.0	-0.3	-0.1	-0.006	-0.002
Meat	242.5	119.38	121.00	120.80	0.2	-0.2	1.2	-0.004	0.032
Fish and other seafood	49.0	109.82	106.17	103.89	-0.2	-2.2	-5.4	-0.010	-0.027
Milk, cheese and eggs	135.3	130.33	127.63	128.58	1.0	0.7	-1.3	0.012	-0.022
Oils and fats	32.2	125.37	129.65	130.01	0.4	0.3	3.7	0.001	0.014
Fruit	97.6	108.82	108.53	112.37	0.7	3.5	3.3	0.034	0.032
Potatoes and other tubers	18.2	89.48	89.17	91.12	-1.2	2.2	1.8	0.003	0.003
Vegetables	89.1	98.42	94.87	93.68	2.2	-1.3	-4.8	-0.010	-0.039
Sugar, jam, honey and other confectionery	42.0	128.30	134.97	134.67	0.5	-0.2	5.0	-0.001	0.025
Food products n.e.c.	80.1	124.77	125.90	126.61	0.0	0.6	1.5	0.005	0.013
Non-alcoholic beverages	123.6	123.77	128.80	129.08	0.5	0.2	4.3	0.003	0.021
Food away from home	429.8	123.90	128.10	128.43	0.27	0.3	3.7	0.013	0.179
Other goods and services	8,482.5	107.05	106.70	107.17	-0.2	0.4	0.1	0.364	0.096
Other goods	4,735.8	105.91	105.58	105.34	-0.3	-0.2	-0.5	-0.102	-0.247
Other services	3,746.7	108.49	108.13	109.48	-0.1	1.3	0.9	0.466	0.343
CPI	10,000.0	109.07	109.03	109.47	-0.1	0.4	0.4	0.404	0.364

Source: Central Bureau of Statistics Aruba

CPI for the period**December 2024 – December 2025****Consumer Price Index**

Over the last 12 months, the CPI increased by 0.4%. Seven (7) of the twelve (12) sectors registered increases in prices. The increases that had the greatest influence on the CPI were registered for the “Housing” (1.6%), “Restaurants and hotels” (6.3%) and “Miscellaneous goods and services” (1.8%) sectors, which contributed with an effect of respectively, 0.42, 0.31 and 0.22 ppts. The increases in the remaining sectors had an effect of 0.33 ppts for the CPI of December 2024 - December 2025.



Aforementioned increases were partially offset mainly by decreases in the indices for the “Household operation” (-3.9%), “Recreation and culture” (-3.3%) and “Clothing and footwear” (-6.6%) sectors, causing an effect of respectively, -0.35, -0.29 and -0.15 ppts for the CPI of December 2024 - December 2025. The decreases in the remaining sectors had an effect of -0.12 ppts for the CPI of December 2024 - December 2025.

The increase in the “Housing” sector was mainly due to an increase in the category “Maintenance and repair of the dwelling” (2.6%), which contributed to an effect of 0.15 ppts. The increase in the “Restaurants and hotels” sector was mainly due to an increase in the category “Catering services” (3.7%), which contributed to an effect of 0.18 ppts. The increase in the “Miscellaneous goods and services” sector was mainly due to an increase in the category “Personal effects n.e.c.” (9.6%), which contributed to an effect of 0.12 ppts.

The decrease in the “Household operation” sector was mainly due to a decrease of 6.8% in the category “Household appliances”, which contributed to an effect of -0.15 ppts. The decrease in the “Recreation and culture” sector was mainly due to a decrease in the category “Holidays” (-16.5%), which contributed to an effect of -0.39 ppts. The decrease in the “Clothing and footwear” sector was mainly due to a decrease of 7.3% in the category “Clothing”, which contributed to an effect of -0.13 ppts.

Consumption basket

Over the last year 49.5% of the products in the consumption basket experienced an increase in price, causing an effect of 2.43 ppts, while 41.2% showed a decrease, contributing to an effect of -2.06 ppts and the remaining 9.3% had no change in price. The prices of goods (-0.3%) showed a decrease and caused an influence of -0.16 ppts, while the prices of services (1.2%) registered an increase and contributed with an effect of 0.52 ppts.

Subsistence level

Over the last 12 months, the subsistence level for a household consisting of two (2) adults and two (2) children (aged 0-14) registered an increase of Afl. 26, from Afl. 5,511 in December 2024 to Afl. 5,537, in December 2025. This increase was mainly due to increases in the “Housing” (Afl. 27) and “Food and non-alcoholic beverages” (Afl. 17) sectors.

Change in prices of crude oil, utilities, gasoline and diesel

The average price per barrel of crude oil registered a decrease of US\$ 11.92 (-17.0%) from US\$ 69.94 in December 2024 to US\$ 58.02 in December 2025.

The energy index decreased by 1.5% over the past 12 months and had an influence of -0.24 ppts. The indices of “Gasoline” (-5.3%) and “Diesel” (-0.7%) registered decreases over the last year, contributing with an effect of respectively, -0.24 and -0.00 ppts on the yearly CPI. The indices of “Electricity” and “Water” did not register any changes had no effect on the CPI over this period, while the remaining 404 goods and services, as a group, show an increase of 0.7% and had an effect of 0.60 ppts on the CPI.

Change in prices of Food & Catering Services

Over the last 12 months, the “Food & catering services” increased by 1.6%. The “Food at home” index showed an increase of 0.8%, where seven (7) of the “Food at home” food groups increased over this period.

The “Sugar, jam, honey and other confectionery” index increased by 5.0%, the largest increase among the “Food at home” food groups. Furthermore, other significant increases were posted in the indices for “Non-alcoholic beverages” (4.3%), “Oils and fats” (3.7%) and “Fruit” (3.3%). The largest decrease during this period was registered in the index for “Fish and other seafood” (-5.4%).

The index for “Food away from home” increased by 3.7% over the last 12 months.

Over the last 12 months, “Food at home” and “Food away from home” as a group showed an increase in price of 1.6% and had an effect of 0.27 ppts on the CPI, while the remaining goods and services, as a group, experienced an increase in price of 0.1%, causing an effect of 0.10 ppts on the CPI.

APPENDIX 1

Monthly & Yearly Changes (%) in the Consumer Price Index, Total Population (Jun 2019 = 100) December 2025

DESCRIPTION	WEIGHT coefficient	2024 Dec	2025 Nov	2025 Dec	Dec-24 Average 12 months	Dec-25 Average 12 months	Monthly Nov - Dec	Ytd Dec - Dec	End of period Dec 24 - Dec 25 12 months	Period average Dec 23/24 - Dec 24/25 24 months
Food and non-alcoholic beverages	1,087.7	118.98	119.61	119.88	117.75	118.48	0.2	0.8	0.8	0.6
Food	964.1	118.37	118.43	118.70	117.07	117.41	0.2	0.3	0.3	0.3
Non-alcoholic beverages	123.6	123.77	128.80	129.08	123.08	126.86	0.2	4.3	4.3	3.1
Alcoholic beverages and tobacco	78.2	110.49	111.68	111.71	110.62	111.23	0.0	1.1	1.1	0.5
Alcoholic beverages for consumption at home	62.2	108.38	108.84	108.87	108.58	108.42	0.0	0.5	0.5	-0.2
Tobacco	16.0	118.68	122.70	122.70	118.55	122.13	0.0	3.4	3.4	3.0
Clothing and footwear	276.8	90.21	82.36	84.24	88.94	86.61	2.3	-6.6	-6.6	-2.6
Clothing	212.8	92.67	83.62	85.87	90.73	88.37	2.7	-7.3	-7.3	-2.6
Footwear	64.0	82.04	78.19	78.82	82.98	80.76	0.8	-3.9	-3.9	-2.7
Housing	2,522.2	110.83	112.42	112.64	111.69	112.28	0.2	1.6	1.6	0.5
Actual rentals for housing	666.7	108.53	110.01	110.15	107.79	109.40	0.1	1.5	1.5	1.5
Imputed rentals for housing	34.4	94.59	94.59	94.59	94.59	94.59	0.0	0.0	0.0	0.0
Maintenance and repair of the dwelling	517.0	122.07	124.39	125.29	121.85	124.71	0.7	2.6	2.6	2.3
Water supply and miscellaneous services relating to the dwelling	463.6	121.83	122.92	122.92	121.83	122.92	0.0	0.9	0.9	0.9
Electricity, gas and other fuels	840.4	100.34	101.89	101.89	103.64	101.76	0.0	1.5	1.5	-1.8
Household operation	929.2	102.95	98.65	98.89	103.28	101.60	0.2	-3.9	-3.9	-1.6
Furniture, furnishings, carpets and other floor coverings	128.8	84.27	68.57	76.51	84.27	76.24	11.6	-9.2	-9.2	-9.5
Household textiles	58.6	58.39	46.34	47.38	65.43	52.50	2.2	-18.9	-18.9	-19.8
Household appliances	246.0	97.94	91.55	91.25	100.33	96.89	-0.3	-6.8	-6.8	-3.4
Glassware, tableware and household utensils	17.2	67.66	59.75	51.59	58.92	55.99	-13.7	-23.7	-23.7	-5.0
Tools and equipment for house and garden	58.2	144.22	148.01	136.55	135.22	151.38	-7.7	-5.3	-5.3	12.0
Goods and services for routine household maintenance and cleaning	420.5	113.55	114.07	114.11	113.49	113.95	0.0	0.5	0.5	0.4
Health	223.1	105.17	101.13	100.06	102.90	103.73	-1.1	-4.9	-4.9	0.8
Medical products, appliances and equipment	152.3	104.41	98.95	97.81	100.31	102.44	-1.1	-6.3	-6.3	2.1
Out-patient services	52.4	108.60	105.38	105.06	109.27	107.03	-0.3	-3.3	-3.3	-2.1
Other treatments	7.8	100.68	97.73	97.08	101.34	99.00	-0.7	-3.6	-3.6	-2.3
Health products and services n.e.c.	10.5	102.44	114.12	109.80	109.68	109.60	-3.8	7.2	7.2	-0.1
Transport	1,257.4	111.97	112.10	111.87	112.79	111.86	-0.2	-0.1	-0.1	-0.8
Purchase of vehicles	442.6	109.56	114.81	110.53	106.59	110.66	-3.7	0.9	0.9	3.8
Operation of personal transport equipment	763.3	114.66	112.07	112.62	118.33	113.82	0.5	-1.8	-1.8	-3.8
Transport services	51.5	92.84	89.27	112.26	83.95	93.17	25.8	20.9	20.9	11.0
Communications	849.6	111.79	114.89	114.41	111.81	114.12	-0.4	2.3	2.3	2.1
Telephone and telefax equipment	43.8	84.01	143.58	134.25	84.33	128.63	-6.5	59.8	59.8	52.5
Telephone and telefax services	805.8	113.30	113.33	113.33	113.30	113.33	0.0	0.0	0.0	0.0
Recreation and culture	1,013.3	94.84	90.22	91.66	95.31	92.13	1.6	-3.3	-3.3	-3.3
Audio-visual, photographic and information processing equipment	58.5	68.89	65.44	56.63	74.13	66.80	-13.5	-17.8	-17.8	-9.9
Other major durables for recreation and culture	20.0	91.62	120.47	99.95	97.31	112.61	-17.0	9.1	9.1	15.7
Other recreational items and equipment; gardens and pets	266.6	108.68	109.83	110.36	110.25	108.09	0.5	1.5	1.5	-2.0
Recreational and cultural services	309.1	103.61	106.20	106.21	102.33	105.74	0.0	2.5	2.5	3.3
Newspapers, books and stationery	43.7	75.72	84.60	83.94	81.79	81.07	-0.8	10.9	10.9	-0.9
Holidays	315.4	82.21	61.44	68.66	81.47	70.24	11.7	-16.5	-16.5	-13.8
Education	98.0	131.23	134.11	134.11	131.23	132.67	0.0	2.2	2.2	1.1
Pre primary and primary education	24.0	142.86	154.62	154.62	142.86	148.74	0.0	8.2	8.2	4.1
Secondary education	43.4	145.73	145.73	145.73	145.73	145.73	0.0	0.0	0.0	0.0
Post-secondary non-tertiary education	4.6	100.00	100.00	100.00	100.00	100.00	0.0	0.0	0.0	0.0
Tertiary education	23.6	100.00	100.00	100.00	100.00	100.00	0.0	0.0	0.0	0.0
Education not definable by level	2.5	120.00	120.00	120.00	120.00	120.00	0.0	0.0	0.0	0.0
Restaurants and hotels	442.0	122.96	128.35	130.65	121.77	126.65	1.8	6.3	6.3	4.0
Catering services	429.8	123.90	128.10	128.43	122.62	126.29	0.3	3.7	3.7	3.0
Accommodation services	12.2	89.67	137.15	208.78	91.95	139.26	52.2	132.8	132.8	51.5
Miscellaneous goods and services	1,222.6	106.29	107.18	108.22	106.12	106.69	1.0	1.8	1.8	0.5
Personal care	427.1	104.80	106.54	107.31	105.67	105.48	0.7	2.4	2.4	-0.2
Personal effects n.e.c.	106.6	125.78	129.06	137.86	120.43	127.69	6.8	9.6	9.6	6.0
Social protection	78.2	133.33	133.33	133.33	133.33	133.33	0.0	0.0	0.0	0.0
Insurance	610.7	100.46	100.46	100.46	100.46	100.46	0.0	0.0	0.0	0.0
CPI	10,000.0	109.07	109.03	109.47	109.18	109.27	0.4	0.4	0.4	0.1

Source: Central Bureau of Statistics Aruba

The Period average (last 24 months) change is calculated by comparing the average index for the most recent 12-month period compared with the average index of the preceding 12-month period.

L.G. Smith Boulevard 160 | Oranjestad, Aruba | Tel: +297 5247433 | Fax: +297 5838057 | www.cbs.aw | 23 January 2026

Note: Figures have been rounded for clarity. Minor discrepancies may exist between individual values and their aggregated totals. These differences do not affect the overall accuracy or integrity of the data.

APPENDIX 2

Effect on the Consumer Price Index per sector and category, Total Population (Jun 2019 = 100) December 2025

DESCRIPTION	WEIGHT coefficient	Monthly Nov - Dec	Ytd Dec - Dec	End of period Dec 24 - Dec 25 12 months	Period average Dec 23/24 - Dec 24/25 24 months
Food and non-alcoholic beverages	1,087.7	0.03	0.09	0.09	0.07
Food	964.1	0.02	0.03	0.03	0.03
Non-alcoholic beverages	123.6	0.00	0.06	0.06	0.04
Alcoholic beverages and tobacco	78.2	0.00	0.01	0.01	0.00
Alcoholic beverages for consumption at home	62.2	0.00	0.00	0.00	0.00
Tobacco	16.0	0.00	0.01	0.01	0.01
Clothing and footwear	276.8	0.05	-0.15	-0.15	-0.06
Clothing	212.8	0.04	-0.13	-0.13	-0.05
Footwear	64.0	0.00	-0.02	-0.02	-0.01
Housing	2,522.2	0.05	0.42	0.42	0.14
Actual rentals for housing	666.7	0.01	0.10	0.10	0.10
Imputed rentals for housing	34.4	0.00	0.00	0.00	0.00
Maintenance and repair of the dwelling	517.0	0.04	0.15	0.15	0.14
Water supply and miscellaneous services relating to the dwelling	463.6	0.00	0.05	0.05	0.05
Electricity, gas and other fuels	840.4	0.00	0.12	0.12	-0.14
Household operation	929.2	0.02	-0.35	-0.35	-0.14
Furniture, furnishings, carpets and other floor coverings	128.8	0.09	-0.09	-0.09	-0.09
Household textiles	58.6	0.01	-0.06	-0.06	-0.07
Household appliances	246.0	-0.01	-0.15	-0.15	-0.08
Glassware, tableware and household utensils	17.2	-0.01	-0.03	-0.03	0.00
Tools and equipment for house and garden	58.2	-0.06	-0.04	-0.04	0.09
Goods and services for routine household maintenance and cleaning	420.5	0.00	0.02	0.02	0.02
Health	223.1	-0.02	-0.10	-0.10	0.02
Medical products, appliances and equipment	152.3	-0.02	-0.09	-0.09	0.03
Out-patient services	52.4	0.00	-0.02	-0.02	-0.01
Other treatments	7.8	0.00	0.00	0.00	0.00
Health products and services n.e.c.	10.5	0.00	0.01	0.01	0.00
Transport	1,257.4	-0.03	-0.01	-0.01	-0.11
Purchase of vehicles	442.6	-0.17	0.04	0.04	0.17
Operation of personal transport equipment	763.3	0.04	-0.14	-0.14	-0.32
Transport services	51.5	0.11	0.09	0.09	0.04
Communications	849.6	-0.04	0.20	0.20	0.18
Telephone and telefax equipment	43.8	-0.04	0.20	0.20	0.18
Telephone and telefax services	805.8	0.00	0.00	0.00	0.00
Recreation and culture	1,013.3	0.13	-0.29	-0.29	-0.29
Audio-visual, photographic and information processing equipment	58.5	-0.05	-0.07	-0.07	-0.04
Other major durables for recreation and culture	20.0	-0.04	0.02	0.02	0.03
Other recreational items and equipment; gardens and pets	266.6	0.01	0.04	0.04	-0.05
Recreational and cultural services	309.1	0.00	0.07	0.07	0.10
Newspapers, books and stationery	43.7	0.00	0.03	0.03	0.00
Holidays	315.4	0.21	-0.39	-0.39	-0.32
Education	98.0	0.00	0.03	0.03	0.01
Pre primary and primary education	24.0	0.00	0.03	0.03	0.01
Secondary education	43.4	0.00	0.00	0.00	0.00
Post-secondary non-tertiary education	4.6	0.00	0.00	0.00	0.00
Tertiary education	23.6	0.00	0.00	0.00	0.00
Education not definable by level	2.5	0.00	0.00	0.00	0.00
Restaurants and hotels	442.0	0.09	0.31	0.31	0.20
Catering services	429.8	0.01	0.18	0.18	0.14
Accommodation services	12.2	0.08	0.13	0.13	0.05
Miscellaneous goods and services	1,222.6	0.12	0.22	0.22	0.06
Personal care	427.1	0.03	0.10	0.10	-0.01
Personal effects n.e.c.	106.6	0.09	0.12	0.12	0.07
Social protection	78.2	0.00	0.00	0.00	0.00
Insurance	610.7	0.00	0.00	0.00	0.00
CPI	10,000.0	0.40	0.36	0.36	0.08

Source: Central Bureau of Statistics Aruba

L.G. Smith Boulevard 160 | Oranjestad, Aruba | Tel: +297 5247433 | Fax: +297 5838057 | www.cbs.aw | 23 January 2026

Note: Figures have been rounded for clarity. Minor discrepancies may exist between individual values and their aggregated totals. These differences do not affect the overall accuracy or integrity of the data.

APPENDIX 3

Monthly & Yearly Changes (%) and effect in the Food & catering services, Total Population (Jun 2019 = 100)
December 2025

DESCRIPTION	WEIGHT coefficient	% Change		Effect	
		Monthly Nov - Dec	End of period Dec 24 - Dec 25 12 months	Monthly Nov - Dec	End of period Dec 24 - Dec 25 12 months
Food & catering services	1,517.5	0.2	1.6	0.040	0.268
Food at home	1,087.7	0.2	0.8	0.027	0.089
Bread and cereals	178.1	-0.3	-0.1	-0.006	-0.002
Rice	23.5	0.2	1.1	0.001	0.003
Bread	72.1	-0.9	-1.5	-0.008	-0.012
Pasta products	9.2	0.5	0.8	0.001	0.001
Other cereals and cereal products	73.3	0.1	0.8	0.000	0.006
Meat	242.5	-0.2	1.2	-0.004	0.032
Bovine	67.3	0.8	6.4	0.006	0.046
Swine	25.5	-0.5	3.7	-0.002	0.010
Poultry	75.7	-0.5	-3.7	-0.004	-0.032
Other meat and meat preparations	74.0	-0.6	0.9	-0.005	0.007
Fish and other seafood	49.0	-2.2	-5.4	-0.010	-0.027
Fish and seafood preparations	49.0	-2.2	-5.4	-0.010	-0.027
Milk, cheese and eggs	135.3	0.7	-1.3	0.012	-0.022
Cheese	55.4	-0.4	2.8	-0.003	0.017
Eggs	16.6	3.8	-26.6	0.009	-0.085
Milk	40.0	1.0	9.8	0.005	0.043
Other milk products	23.3	0.5	1.3	0.001	0.003
Oils and fats	32.2	0.3	3.7	0.001	0.014
Corn oil	2.8	-0.1	2.4	0.000	0.001
Butter and margarine	9.2	-0.5	1.7	0.000	0.002
Other oils and fats	20.1	0.6	4.6	0.002	0.011
Fruit	97.6	3.5	3.3	0.034	0.032
Oranges	9.4	-6.2	2.1	-0.009	0.003
Bananas and plantains	19.9	0.5	4.2	0.001	0.006
Apples	9.3	-2.7	0.7	-0.003	0.001
Avocado	5.0	-1.3	-9.9	0.000	-0.004
Grapes	9.2	2.8	4.4	0.003	0.005
Nuts	11.9	-0.1	0.4	0.000	0.001
Lemons and mandarins	6.0	-2.5	-11.6	-0.001	-0.005
Cherries and strawberries	8.8	44.6	20.3	0.049	0.027
Melons and watermelons	7.7	-4.5	-11.3	-0.003	-0.008
Papayas and pineapples	6.9	-3.9	1.8	-0.002	0.001
Other fruits and fruit products	3.5	1.7	18.0	0.001	0.006
Potatoes and other tubers	18.2	2.2	1.8	0.003	0.003
Potatoes	12.2	1.1	-7.6	0.001	-0.006
Other tubers	2.0	0.3	-0.8	0.000	0.000
Sweet potatoes and yucca	4.0	5.2	25.3	0.002	0.009
Vegetables	89.1	-1.3	-4.8	-0.010	-0.039
Lettuce	6.8	10.3	11.4	0.003	0.003
Tomatoes	9.7	-7.7	-13.7	-0.007	-0.014
Onions and garlic	18.7	1.2	-2.5	0.002	-0.004
Celery and broccoli	15.3	-7.1	-8.1	-0.009	-0.011
Other vegetables	15.3	2.4	-12.6	0.003	-0.017
Other preserved or processed vegetables	8.4	0.8	3.4	0.001	0.003
Frozen vegetable mixtures	14.8	-0.8	0.2	-0.001	0.000
Sugar, jam, honey and other confectionery	42.0	-0.2	5.0	-0.001	0.025
Sugar	12.1	0.1	1.9	0.000	0.003
Jams and jellies	2.5	-1.6	2.8	0.000	0.001
Other confectionery products	27.5	-0.3	6.8	-0.001	0.021
Food products n.e.c.	80.1	0.6	1.5	0.005	0.013
Other food products	80.1	0.6	1.5	0.005	0.013
Non-alcoholic beverages	123.6	0.2	4.3	0.003	0.060
Coffee and tea	20.9	0.6	10.4	0.002	0.025
Other non-alcoholic beverages	14.6	0.6	3.9	0.001	0.006
Soft and sports drinks	31.0	0.0	-2.4	0.000	-0.008
Fruit juices	57.1	0.1	5.7	0.001	0.038
Food away from home	429.8	0.3	3.7	0.013	0.179
Food and beverage consumption away from home	429.8	0.3	3.7	0.013	0.179
Other goods and services	8,482.5	0.4	0.1	0.364	0.096
Other goods	4,735.8	-0.2	-0.5	-0.102	-0.247
Other services	3,746.7	1.3	0.9	0.466	0.343
CPI	10,000	0.4	0.4	0.404	0.364

Source: Central Bureau of Statistics Aruba

APPENDIX 4

Overview of the Consumer Price Index (CPI), 2024 - 2025 (Jun 2019 = 100)

					YEAR: 2025				YEAR: 2024			
	Base	Base	Base	Base	CHANGE				CHANGE			
	Jun-19 =100.0	Jun-19 =100.0	Jun-19 =100.0	Jun-19 =100.0	Monthly	Year-to date	Yearly 12 months	Period average 24 months	Monthly	Year-to date	Yearly 12 months	Period average 24 months
	<u>Jan.'24</u>	<u>Dec.'23</u>	<u>Jan.'25</u>	<u>Dec.'24</u>								
Total Population	108.31	108.79	108.65	109.07	-0.4	-0.4	0.3	1.6	-0.4	-0.4	1.5	2.9
Low Income	109.03	109.37	109.40	109.69	-0.3	-0.3	0.3		-0.3	-0.3	2.1	
High Income	107.96	108.48	108.25	108.73	-0.4	-0.4	0.3		-0.5	-0.5	1.3	
	<u>Feb.'24</u>	<u>Jan.'24</u>	<u>Feb.'25</u>	<u>Jan.'25</u>								
Total Population	108.57	108.31	109.09	108.65	0.4	0.02	0.5	1.6	0.2	-0.2	0.9	2.4
Low Income	109.29	109.03	109.74	109.40	0.3	0.04	0.4		0.2	-0.1	1.5	
High Income	108.20	107.96	108.74	108.25	0.5	0.00	0.5		0.2	-0.3	0.6	
	<u>Mar.'24</u>	<u>Feb.'24</u>	<u>Mar.'25</u>	<u>Feb.'25</u>								
Total Population	109.37	108.57	109.50	109.09	0.4	0.4	0.1	1.4	0.7	0.5	1.8	2.1
Low Income	109.97	109.29	110.11	109.74	0.3	0.4	0.1		0.6	0.5	2.3	
High Income	109.05	108.20	109.17	108.74	0.4	0.4	0.1		0.8	0.5	1.5	
	<u>Apr.'24</u>	<u>Mar.'24</u>	<u>Apr.'25</u>	<u>Mar.'25</u>								
Total Population	109.45	109.37	109.93	109.50	0.4	0.8	0.4	1.3	0.1	0.6	2.2	1.9
Low Income	109.87	109.97	110.70	110.11	0.5	0.9	0.8		-0.1	0.5	2.4	
High Income	109.25	109.05	109.53	109.17	0.3	0.7	0.3		0.2	0.7	2.1	
	<u>May'24</u>	<u>Apr.'24</u>	<u>May'25</u>	<u>Apr.'25</u>								
Total Population	109.41	109.45	109.57	109.93	-0.3	0.5	0.1	1.1	-0.03	0.6	2.6	1.8
Low Income	109.92	109.87	110.34	110.70	-0.3	0.6	0.4		0.05	0.5	2.9	
High Income	109.14	109.25	109.17	109.53	-0.3	0.4	0.0		-0.1	0.6	2.5	
	<u>Jun'24</u>	<u>May'24</u>	<u>Jun'25</u>	<u>May'25</u>								
Total Population	108.72	109.41	109.39	109.57	-0.2	0.3	0.6	0.9	-0.6	-0.1	2.4	1.7
Low Income	109.39	109.92	110.14	110.34	-0.2	0.4	0.7		-0.5	0.0	2.9	
High Income	108.37	109.14	108.99	109.17	-0.2	0.2	0.6		-0.7	-0.1	2.1	
	<u>Jul'24</u>	<u>Jun'24</u>	<u>Jul'25</u>	<u>Jun'25</u>								
Total Population	109.20	108.72	109.12	109.39	-0.2	0.0	-0.1	0.7	0.4	0.4	2.8	1.8
Low Income	109.80	109.39	109.89	110.14	-0.2	0.2	0.1		0.4	0.4	2.4	
High Income	108.87	108.37	108.71	108.99	-0.3	0.0	-0.1		0.5	0.4	3.0	
	<u>Aug.'24</u>	<u>Jul'24</u>	<u>Aug.'25</u>	<u>Jul'25</u>								
Total Population	110.01	109.20	109.14	109.12	0.02	0.1	-0.8	0.4	0.7	1.1	2.9	2.0
Low Income	110.50	109.80	109.83	109.89	-0.1	0.1	-0.6		0.6	1.0	2.4	
High Income	109.74	108.87	108.77	108.71	0.1	0.0	-0.9		0.8	1.2	3.1	
	<u>Sep.'24</u>	<u>Aug.'24</u>	<u>Sep.'25</u>	<u>Aug.'25</u>								
Total Population	109.58	110.01	109.17	109.14	0.02	0.1	-0.4	0.2	-0.4	0.7	1.5	2.0
Low Income	110.18	110.50	110.02	109.83	0.2	0.3	-0.1		-0.3	0.7	1.2	
High Income	109.26	109.74	108.71	108.77	-0.1	0.0	-0.5		-0.4	0.7	1.6	
	<u>Oct.'24</u>	<u>Sep.'24</u>	<u>Oct.'25</u>	<u>Sep.'25</u>								
Total Population	109.19	109.58	109.12	109.17	0.0	0.0	-0.1	0.2	-0.4	0.4	1.0	2.0
Low Income	109.94	110.18	109.92	110.02	-0.1	0.2	0.0		-0.2	0.5	0.9	
High Income	108.79	109.26	108.68	108.71	0.0	0.0	-0.1		-0.4	0.3	1.0	
	<u>Nov.'24</u>	<u>Oct.'24</u>	<u>Nov.'25</u>	<u>Oct.'25</u>								
Total Population	109.25	109.19	109.03	109.12	-0.1	0.0	-0.2	0.1	0.1	0.4	0.8	1.9
Low Income	109.72	109.94	109.94	109.92	0.0	0.2	0.2		-0.2	0.3	0.6	
High Income	108.98	108.79	108.54	108.68	-0.1	-0.2	-0.4		0.2	0.5	0.9	
	<u>Dec.'24</u>	<u>Nov.'24</u>	<u>Dec.'25</u>	<u>Nov.'25</u>								
Total Population	109.07	109.25	109.47	109.03	0.4	0.4	0.4	0.1	-0.2	0.3	0.3	1.7
Low Income	109.69	109.72	110.31	109.94	0.3	0.6	0.6		0.0	0.3	0.3	
High Income	108.73	108.98	109.02	108.54	0.4	0.3	0.3		-0.2	0.2	0.2	

Source: Central Bureau of Statistics Aruba

APPENDIX 5

Prices of crude oil, utilities and gasoline, 2001 - 2025

		Electricity components							
	Crude Crude oil ¹	Total energy charge ²			Fixed charge ³	Electricity ⁴	Water ⁵	Gasoline ⁶	Diesel ⁶
Month		≤ 500 kWh	501 - 1000 kWh	> 1001 kWh					
Average 2001	26.01	24.59	22.09	22.09	0.00	172.79	89.40	128.34	90.10
Average 2002	26.06	24.89	22.39	22.39	0.00	174.91	90.82	127.20	88.68
Average 2003	34.49	27.02	24.52	24.52	0.00	190.38	99.21	139.21	100.18
Average 2004	41.31	27.18	24.68	24.68	0.00	191.57	100.02	152.51	113.05
Average 2005	56.36	31.10	28.60	28.60	0.00	219.97	113.69	167.74	136.04
Average 2006	66.12	35.91	33.41	33.41	0.00	254.88	128.70	176.22	149.77
Average 2007	72.08	36.59	34.09	34.09	0.00	259.84	133.59	200.43	168.38
Average 2008	99.87	45.67	43.17	43.17	0.00	325.67	161.80	228.19	214.48
Average 2009	61.46	37.33	34.83	34.83	0.00	265.17	139.60	175.15	142.53
Average 2010	79.22	43.92	41.42	41.42	0.00	312.98	159.21	193.43	163.22
Average 2011	94.74	47.58	47.57	47.57	0.00	345.14	177.47	229.48	203.46
Average 2012	94.25	47.68	51.21	53.46	0.00	353.85	171.13	235.53	210.07
Average 2013	98.00	41.10	44.90	58.40	0.00	306.75	137.05	229.48	205.83
Average 2014	93.49	42.58	45.32	57.77	0.63	315.71	137.05	224.24	200.21
Average 2015	48.71	47.02	46.56	55.87	2.50	342.59	137.05	179.74	147.80
Average 2016	43.17	40.40	41.80	47.64	12.50	308.76	137.05	165.87	131.12
Average 2017	50.85	34.52	35.72	45.93	12.50	265.65	137.05	180.79	147.69
Average 2018	65.08	34.52	35.72	45.93	12.50	265.65	137.05	204.95	177.59
Average 2019	56.84	34.52	35.72	45.93	12.50	265.65	137.05	202.67	176.53
Average 2020	39.25	31.09	31.99	42.09	12.50	240.09	137.05	177.93	143.26
Average 2021	67.78	31.09	31.99	42.09	12.50	240.09	137.05	223.34	181.95
Average 2022	95.16	34.19	35.18	46.29	12.50	262.78	150.17	275.90	263.17
Average 2023	77.67	36.71	37.78	49.70	12.50	281.24	168.73	260.17	235.78
January-24	73.56	35.80	36.84	48.47	12.50	274.57	168.73	232.90	213.60
February-24	76.93	35.80	36.84	48.47	12.50	274.57	168.73	245.40	227.80
March-24	81.01	35.80	36.84	48.47	12.50	274.57	168.73	255.60	236.40
April-24	85.50	35.80	36.84	48.47	12.50	274.57	168.73	266.90	230.10
May-24	80.31	35.80	36.84	48.47	12.50	274.57	168.73	269.00	228.20
June-24	79.89	35.80	36.84	48.47	12.50	274.57	168.73	257.60	217.70
July-24	82.57	35.80	36.84	48.47	12.50	274.57	168.73	251.60	218.50
August-24	76.79	35.80	36.84	48.47	12.50	274.57	168.73	257.60	220.70
September-24	70.30	35.80	36.84	48.47	12.50	274.57	168.73	251.20	210.20
October-24	72.48	35.80	36.84	48.47	12.50	274.57	168.73	234.90	201.40
November-24	69.60	34.31	35.31	46.45	12.50	263.67	168.73	238.40	206.20
December-24	69.94	34.31	35.31	46.45	12.50	263.67	168.73	233.70	205.60
Average 2024	76.57	35.55	36.59	48.13	12.50	272.76	168.73	249.57	218.03
January-25	75.32	34.31	35.31	46.45	12.50	263.67	168.73	233.50	204.90
February-25	71.56	34.31	35.31	46.45	12.50	263.67	168.73	241.70	218.20
March-25	68.06	34.31	35.31	46.45	12.50	263.67	168.73	241.00	216.10
April-25	64.22	34.31	35.31	46.45	12.50	263.67	168.73	239.90	206.20
May-25	62.08	34.31	35.31	46.45	12.50	263.67	168.73	224.50	188.00
June-25	68.60	34.31	35.31	46.45	12.50	263.67	168.73	226.70	185.60
July-25	67.94	34.31	35.31	46.45	12.50	263.67	168.73	229.00	196.70
August-25	65.67	34.31	35.31	46.45	12.50	263.67	168.73	228.90	204.60
September-25	63.99	34.31	35.31	46.45	12.50	263.67	168.73	228.90	196.40
October-25	61.04	34.31	35.31	46.45	12.50	263.67	168.73	228.70	200.00
November-25	60.00	34.31	35.31	46.45	12.50	263.67	168.73	219.20	195.60
December-25	58.02	34.31	35.31	46.45	12.50	263.67	168.73	221.20	204.10
Average 2025	65.54	34.31	35.31	46.45	12.50	263.67	168.73	230.27	201.37
Source: Central Bureau of Statistics Aruba									

Source: Central Bureau of Statistics Aruba

¹ Average West Texas Intermediate (WTI) crude oil price per barrel in US\$ (Source: U.S. Energy Information Administration)

² Total energy charge in Afl. cents per kWh

³ Fixed charge was introduced in October 2014 at Afl. 2.50

⁴ Electricity price in Afl. is based on an average household usage of 725.5 kWh

⁵ Water price in Afl. is based on an average household usage

⁶ Gasoline and diesel prices in Afl. cents per liter

APPENDIX 6

