

Consumer Price Index, base period June 2019

May 2025

The Central Bureau of Statistics presents the most important findings for the Consumer Price Index (CPI) for the month of May 2025.

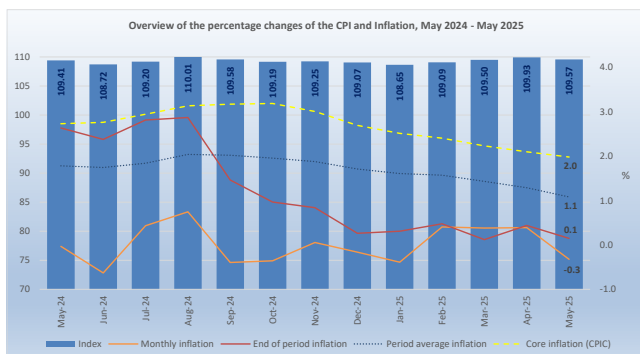


Consumer Price Index for the month of May 2025

The CPI for May 2025 (109.57), shows a decrease of 0.3% compared to the index of April 2025 (109.93).

The percentage change of the CPI over the last twelve (12) months (May 2024 to May 2025) is 0.1, a decrease of 2.5 percentage points (ppts) compared to the percentage change for the same period of last year (2.6%).

The period average (last 24 months) percentage change of the CPI for the periods May 2023 to May 2024 and May 2024 to May 2025 is 1.1%, a decrease of 0.7 ppts compared to the period average percentage change over the periods May 2022 to May 2023 and May 2023 to May 2024 (1.8%).

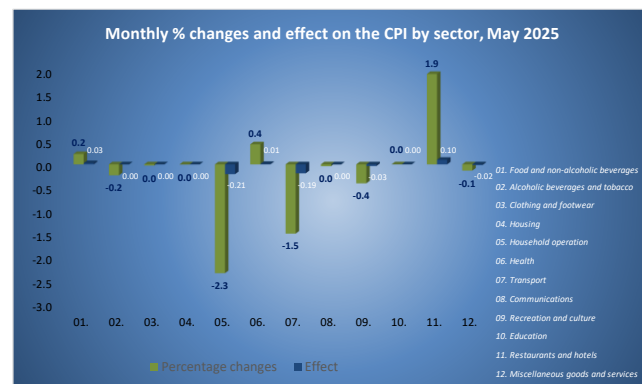


During this month, eight (8) of the twelve (12) sectors registered decreases in prices. The decreases that had the greatest influence on the CPI were registered for the "Household operation" (-2.3%) and "Transport" (-1.5%) sectors, which contributed with an effect of respectively, -0.21 and -0.19 ppts. The decreases in the remaining sectors had an effect of -0.06 ppts on the CPI of May 2025.

Aforementioned decreases were partially offset mainly by an increase in the index for the "Restaurants and hotels" (1.9%) sector, which caused an effect of 0.10 ppts. The increases in the remaining sectors had an effect of 0.03 ppts on the CPI of May 2025.

The decrease in the "Household operation" sector was mainly due to a decrease of 11.1% in the category "Household appliances", which contributed to an effect of -0.28 ppts. The decrease in the "Transport" sector was mainly due to a decrease in the category "Operation of personal transport equipment" (-3.6%), which contributed to an effect of -0.29 ppts.

The increase in the "Restaurants and hotels" sector was mainly due to an increase in the category "Accommodation services" (52.4%), which contributed to an effect of 0.08 ppts.



Consumption basket

The consumption basket of the CPI consists of 408 goods and services. Compared to April 2025, 49.8% of these products had an increase in price, causing an effect of 0.78 ppt, while 32.8% showed a decrease, contributing to an effect of -1.10 ppts and the remaining 17.4% had no change in price. Compared to April 2025 the prices of goods (-0.7%) show a decrease causing an influence of -0.42 ppts, while the prices of services increased by 0.2% and had an effect of 0.10 ppts on the CPI of May 2025.

CPI (BASE JUN 2019 = 100)										May-2025		CPIC		SUBSISTENCE LEVEL	
Month	Year	Index	Avg. Index	Monthly	Year-to-date	End of period	Period average	Goods	Services	CPIC	Energy	Food	1 adult	2 adults + 2 children	
May	2025	109.57 ↓	109.31 ↓	-0.3 ↓	0.5 ↑	0.1 ↑	1.1 ↑	-0.7 ↓	0.2 ↑	2.0 ↑	-3.0 ↓	1.6 ↑	2,624 ↓	5,510 ↓	↓
April	2025	109.93 ↑	109.30 ↓	0.4 ↑	0.8 ↑	0.4 ↑	1.3 ↑	0.8 ↑	-0.2 ↓	2.1 ↑	-2.4 ↓	1.7 ↑	2,625 ↑	5,513 ↑	↑
May	2024	109.41	108.14	-0.03	0.6	2.6	1.8	0.1	-0.2	2.7	-2.7	3.0	2,615	5,492	

Core inflation

The CPIC (core inflation) - CPI excluding the effect of energy and food – was 2.0% in May 2025. The energy index - which consists of the products: electricity, water, gasoline and diesel – was -3.0%. The food index showed an increase of 1.6%.

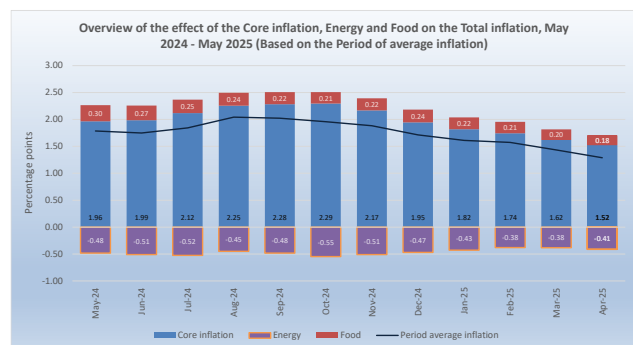
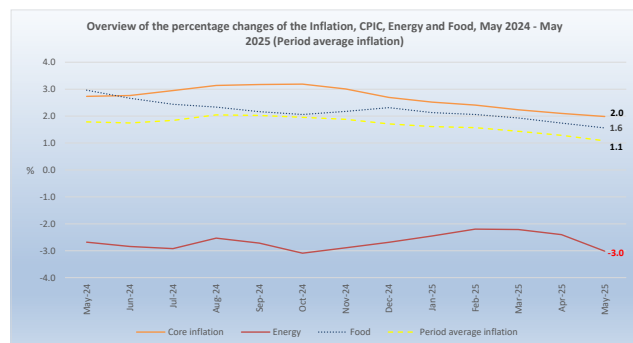
What is CPIC?

The CPIC (core inflation) is a portion of the inflation where certain items, which have volatile price movements, are excluded, such as food products and energy. When calculating the core inflation, the most volatile components are eliminated from the inflation. The core inflation index is used to assess the medium and long-term trends of the general level of prices. For purposes of economic policy-making, especially monetary policy, many economists focus on the proportion of the core inflation, as this allows a more in-depth evaluation of the recent inflation developments in the economy. The annual average of the CPI is used to calculate the CPIC.

The CPIC is calculated by comparing the average index for the most recent 12-month period compared with the preceding 12-month period.

The three main uses of a CPI are:

1. a calculation method to compensate employees due to the loss of purchasing power, adjusting their salaries, with the percentage change rate of the CPI, which is known as indexation.
2. a tool used in National Accounts to adjust components of the gross domestic product (GDP) from nominal terms to real terms. (For example, by eliminating the effect of the price changes from the consumption value)
3. a means commonly used by governments and central banks to set inflation targets.



Subsistence level

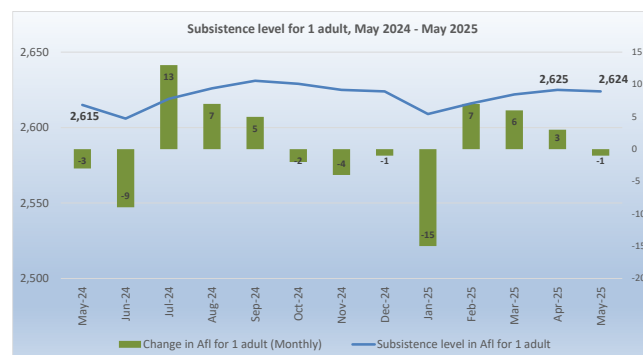
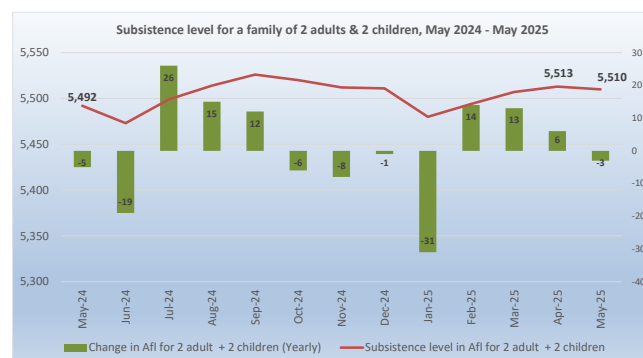
The subsistence level for a household consisting of two (2) adults and two (2) children (aged 0-15 years) in May 2025 is Afl. 5,510, a decrease of Afl. 3 compared to April 2025 (Afl. 5,513). The subsistence level for a single adult household is Afl. 2,624, a decrease of Afl. 1 compared to April 2025 (Afl. 2,625).

What is the Subsistence level and how is it adjusted?

The CBS defines the subsistence level as the minimum level of income that is perceived as necessary for a person or family to be able to function in the society in an adequate and socially acceptable manner. When the definition of subsistence level is used, it refers in reality to a "Social subsistence level" and not the literal definition "the money needed to purchase those goods and services deemed necessary for living a life free of basic deprivation" (United Nations).

A subsistence level index was created by calculating the cost of the essential resources that an average adult consumes during a month. Each month this index is adjusted, based on the prices of food, clothing, shelter, transportation, and other items in the basket.

The current subsistence level is based on the "Subsistence level 2010" report published by the CBS in December 2010, and is updated monthly according to the CPI. The reference unit used in this report is of a household consisting of two adults and two children (0 to 14 years). The total weight of such a household is 2.1 (1.0 + 0.5 + 0.3 + 0.3).



The subsistence level in May 2025

The subsistence level is the minimum level of income which is perceived necessary to achieve an adequate standard of living in a given country. The subsistence level is usually determined by estimating the cost of all the essential resources that an average adult consumes in one month or year. This is commonly called a basic needs index, and varies according to the price of food, clothing, housing, transport and other items in the "basket". Equivalent scales are used to adjust the assumed standard of living, of households of different sizes and composition. The scale assigns a weight of 1.0 for the first adult and 0.5 for each additional adult in the household (aged 15+) and a weight of 0.3 for each child (aged 0-14 years). The subsistence level is based on figures of the report "Bestaansminimum 2010" and is monthly updated for inflation using the monthly CPI. The reference unit used in this report is a household consisting of two (2) adults and two (2) children (aged 0-14 years).

In May 2025 the monthly subsistence level for a household consisted of two (2) adults and two (2) children (aged 0-14 years) (Afl. 5,510) showed an increase of Afl. 18 compared to May 2024 (Afl. 5,492) and was mainly caused by increases of Afl. 11 and Afl. 8 in the sectors "Food and non-alcoholic beverages" and "Clothing and footwear". The largest decrease in May 2025 was registered in the sector "Transport" (Afl. - 17).

Table 1 Monthly subsistence level in Aruba (in Afl.) by sector for a family of 2 adults and 2 children (aged 0-14 years)

May-24 vs May-25

Sector	May-24	May-25	Absolute Change
Food and non-alcoholic beverages	2,292	2,303	11
Clothing and footwear	234	242	8
Housing	1,653	1,659	6
Household operation	114	116	2
Health	85	88	3
Transport	340	323	-17
Communications	170	175	5
Recreation and culture	158	155	-3
Education	97	97	0
Miscellaneous goods and services	349	351	2
Total	5,492	5,510	18

Source: Central Bureau of Statistics Aruba

Table 2 Monthly Subsistence level in Aruba (in Afl.) by family size and composition, (Base period Oct. 2010) for the period:

May 2024 - May 2025

Period	Escala di ekivalencia				
	1	1.3	1.5	1.8	2.1
	1 adult	1 adult + 1 child	2 adults	2 adults + 1 child	2 adults + 2 children
May-24	2,615	3,400	3,923	4,708	5,492
Jun-24	2,606	3,388	3,909	4,691	5,473
Jul-24	2,619	3,404	3,928	4,714	5,499
Aug-24	2,626	3,413	3,938	4,726	5,514
Sep-24	2,631	3,421	3,947	4,736	5,526
Oct-24	2,629	3,417	3,943	4,732	5,520
Nov-24	2,625	3,412	3,937	4,725	5,512
Dec-24	2,624	3,411	3,936	4,723	5,511
Jan-25	2,609	3,392	3,914	4,697	5,480
Feb-25	2,616	3,401	3,924	4,709	5,494
Mar-25	2,622	3,409	3,933	4,720	5,507
Apr-25	2,625	3,413	3,938	4,726	5,513
May-25	2,624	3,411	3,935	4,723	5,510

Source: Central Bureau of Statistics Aruba

In May 2025, the monthly subsistence level for a single adult household is Afl 2,624, which represents an income deficit of Afl. 638, an increase of Afl. 9 compared to the deficit observed one year ago (Afl. 629). This deficit is the second highest registered over a period of six (6) years for the month of May.

Tabel 3 Monthly income surplus/deficit (in Afl.) for a single adult household for May, 2020 - 2025

Period	1 adult	Minimum wage	Surplus/deficit
2020	2,283	1,815	-468
2021	2,263	1,815	-448
2022	2,403	1,815	-588
2023	2,550	1,893	-657
2024	2,615	1,986	-629
2025	2,624	1,986	-638

Source: Central Bureau of Statistics Aruba

Press Release Consumer Price Index May 2025

Table 4 Overview of the percentage changes of the CPI and the subsistence level, May 2024 - May 2025 (Jun 2019=100)

	May-24	Jun-24	Jul-24	Aug-24	Sep-24	Oct-24	Nov-24	Dec-24	Jan-25	Feb-25	Mar-25	Apr-25	May-25
Index CPI													
CPI (Monthly)	109.41	108.72	109.20	110.01	109.58	109.19	109.25	109.07	108.65	109.09	109.50	109.93	109.57
CPI (12-month average)	108.14	108.35	108.60	108.86	108.99	109.08	109.15	109.18	109.21	109.25	109.26	109.30	109.31
Percentage changes													
Monthly	0.0	-0.6	0.4	0.7	-0.4	-0.4	0.1	-0.2	-0.4	0.4	0.4	0.4	-0.3
Year-to-date	0.6	-0.1	0.4	1.1	0.7	0.4	0.4	0.3	-0.4	0.0	0.4	0.8	0.5
End of period	2.6	2.4	2.8	2.9	1.5	1.0	0.8	0.3	0.3	0.5	0.1	0.4	0.1
Period average	1.8	1.7	1.8	2.0	2.0	2.0	1.9	1.7	1.6	1.6	1.4	1.3	1.1
Index Goods													
Goods (Monthly)	109.68	108.49	108.77	110.52	109.93	109.26	108.83	108.35	107.88	108.65	109.08	109.97	109.17
Goods (12-month average)	108.29	108.31	108.51	108.78	108.91	108.97	109.01	109.02	109.03	109.07	109.08	109.12	109.07
Percentage changes													
Monthly	0.1	-1.1	0.3	1.6	-0.5	-0.6	-0.4	-0.4	-0.4	0.7	0.4	0.8	-0.7
Year-to-date	1.3	0.2	0.5	2.1	1.6	0.9	0.5	0.1	-0.4	0.3	0.7	1.5	0.8
End of period	0.8	0.2	2.3	3.0	1.4	0.7	0.5	0.1	0.1	0.4	0.1	0.4	-0.5
Period average	-0.2	-0.5	-0.4	0.0	0.1	0.2	0.3	0.4	0.5	0.7	0.8	0.8	0.7
Index Services													
Services (Monthly)	109.05	109.05	109.79	109.31	109.09	109.09	109.83	110.07	109.72	109.70	110.10	109.88	110.13
Services (12-month average)	107.94	108.42	108.74	108.97	109.11	109.23	109.35	109.40	109.45	109.50	109.51	109.56	109.65
Percentage changes													
Monthly	-0.2	0.0	0.7	-0.4	-0.2	0.0	0.7	0.2	-0.3	0.0	0.4	-0.2	0.2
Year-to-date	-0.5	-0.5	0.2	-0.2	-0.4	-0.4	0.3	0.5	-0.3	-0.3	0.0	-0.2	0.1
End of period	5.3	5.6	3.6	2.6	1.6	1.3	1.3	0.5	0.6	0.5	0.1	0.6	1.0
Period average	4.6	5.0	5.1	5.0	4.8	4.6	4.1	3.6	3.2	2.8	2.4	1.9	1.6
Indices CPIC, Energy & Food													
CPIC (12-month average)	106.02	106.27	106.58	106.93	107.16	107.36	107.50	107.55	107.62	105.44	107.80	107.96	108.12
Energy (12-month average)	113.43	113.45	113.41	113.29	112.91	112.41	112.10	111.88	111.71	113.66	111.15	110.68	110.01
Food (12-month average)	115.46	115.68	115.93	116.16	116.37	116.57	116.82	117.07	117.13	115.04	117.26	117.26	117.26
Percentage changes													
CPIC (Period average)	2.7	2.8	2.9	3.1	3.2	3.2	3.0	2.7	2.5	2.6	2.2	2.1	2.0
Energy (Period average)	-2.7	-2.8	-2.9	-2.5	-2.7	-3.1	-2.9	-2.7	-2.4	-1.1	-2.2	-2.4	-3.0
Food (Period average)	3.0	2.7	2.4	2.3	2.2	2.1	2.2	2.3	2.1	4.0	1.9	1.7	1.6
Subsistence level (Monthly)													
1 adult	2,615	2,606	2,619	2,626	2,631	2,629	2,625	2,624	2,609	2,616	2,622	2,625	2,624
2 adults + 2 children	5,492	5,473	5,499	5,514	5,526	5,520	5,512	5,511	5,480	5,494	5,507	5,513	5,510
Changes in Afl													
1 adult (Monthly)	-3	-9	13	7	5	-2	-4	-1	-15	7	6	3	-2
1 adult (Yearly)	65	65	79	72	46	42	31	24	8	15	6	8	8
2 adults + 2 children (Monthly)	-5	-19	26	15	12	-6	-8	-1	-31	14	13	6	-3
2 adults + 2 children (Yearly)	138	137	165	150	98	88	65	51	18	32	13	16	17

Source: Central Bureau of Statistics Aruba

Table 5 Percentage change by sector

Sector	Weight coefficient	Effect Apr - May	Percentage changes			
			Monthly Apr - May	Year-to-date Dec - May	End of period May 24 - May 25	Period average May 23/24 - May 24/25
CPI	10,000.0	-0.32	-0.3	0.5	0.1	1.1
01. Food and non-alcoholic beverages	1,125.3	0.03	0.2	-0.9	0.5	1.8
02. Alcoholic beverages and tobacco	81.9	0.00	-0.2	0.6	0.4	0.2
03. Clothing and footwear	625.9	0.00	0.0	-1.5	3.4	0.9
04. Housing	2,553.3	0.00	0.0	1.3	0.4	0.7
05. Household operation	741.3	-0.21	-2.3	0.7	1.7	0.1
06. Health	235.8	0.01	0.4	1.4	3.2	2.5
07. Transport	1,815.4	-0.19	-1.5	-1.1	-5.2	0.0
08. Communications	706.3	0.00	0.0	2.8	3.2	4.4
09. Recreation and culture	891.2	-0.03	-0.4	-1.9	-2.0	-2.5
10. Education	83.0	0.00	0.0	0.0	0.0	3.8
11. Restaurants and hotels	373.7	0.10	1.9	3.8	4.3	3.6
12. Miscellaneous goods and services	767.0	-0.02	-0.1	0.2	0.7	1.9

Source: Central Bureau of Statistics Aruba

Table 6 Categories with the greatest positive effect on the CPI

Category	Monthly change	Effect
May 2025		
Purchase of vehicles	2.3	0.10
Furniture, furnishings, carpets and other floor coverings	10.6	0.09
Accommodation services	52.4	0.08
Newspapers, books and stationery	6.7	0.02
Catering services	0.4	0.02
Food	0.2	0.02

Source: Central Bureau of Statistics Aruba

Table 7 Categories with the greatest negative effect on the CPI

Category	Monthly change	Effect
May 2025		
Operation of personal transport equipment	-3.6	-0.29
Household appliances	-11.1	-0.28
Holidays	-2.5	-0.05
Household textiles	-7.4	-0.02
Personal effects n.e.c.	-1.4	-0.02

Source: Central Bureau of Statistics Aruba

Change in prices of crude oil, utilities, gasoline and diesel in May 2025

The prices of utilities (electricity and water), gasoline and diesel are for the greater part determined by international crude oil prices. In May 2025 the average price per barrel of crude oil (US\$ 62.08) had a decrease of US\$ 2.14 (-3.3%) compared to April 2025 (US\$ 64.22).

The prices of electricity and water did not change compared to April 2025. Subsequently, the average electricity price per household remained at Afl. 263.67, while the average price of water per household remained at Afl. 168.73.

In May 2025 the price of gasoline registered a decrease of Afl. 15.40 cents (-6.4%) and had an effect of -0.29 ppts on the CPI. The price of diesel registered a decrease of Afl. 18.20 cents (-8.8%) and had an effect of -0.03 ppts on the CPI of May 2025.

In May 2025, utilities, gasoline and diesel as a group, showed a decrease in price of 1.9% compared to April 2025, and had an effect of -0.32 ppts on the CPI, while the remaining 404 goods and services, as a group, show a slight decrease of 0.01% and had an effect of -0.01 ppt on the CPI.

Table 9 Effect on the CPI of goods and services which are dependent on crude oil prices

Category	Weight	Monthly		Yearly	
		Apr-25 vs May-25	Effect	May-24 vs May-25	Effect
May 2025					
Electricity	810.2	0.0	0.00	-4.0	-0.30
Gasoline	430.5	-6.4	-0.29	-16.5	-0.84
Water	367.3	0.0	0.00	0.0	0.00
Diesel	30.2	-8.8	-0.03	-17.6	-0.06
Total group	1,638.1	-1.9	-0.32	-7.0	-1.20
Remaining goods and services	8,361.9	-0.01	-0.01	1.6	1.35
CPI	10,000.0	-0.3	-0.32	0.1	0.15

Source: Central Bureau of Statistics Aruba

Table 8 Prices of crude oil, utilities, gasoline and diesel, 2024 - 2025

Month	2024							2025						
	Crude oil	Total energy charge		Electricity	Water	Gasoline	Diesel	Crude oil	Total energy charge		Electricity	Water	Gasoline	Diesel
		≤ 500 kWh	501-1000 kWh						≤ 500 kWh	501-1000 kWh				
January	73.56	35.80	36.84	274.57	168.73	232.90	213.60	75.32	34.31	35.31	263.67	168.73	233.50	204.90
April	76.93	35.80	36.84	274.57	168.73	245.40	227.80	71.56	34.31	35.31	263.67	168.73	241.70	218.20
March	81.01	35.80	36.84	274.57	168.73	255.60	236.40	68.06	34.31	35.31	263.67	168.73	241.00	216.10
April	85.50	35.80	36.84	274.57	168.73	266.90	230.10	64.22	34.31	35.31	263.67	168.73	239.90	206.20
May	80.31	35.80	36.84	274.57	168.73	269.00	228.20	62.08	34.31	35.31	263.67	168.73	224.50	188.00
June	79.89	35.80	36.84	274.57	168.73	257.60	217.70							
July	82.57	35.80	36.84	274.57	168.73	251.60	218.50							
August	76.79	35.80	36.84	274.57	168.73	257.60	220.70							
September	70.30	35.80	36.84	274.57	168.73	251.20	210.20							
October	72.48	35.80	36.84	274.57	168.73	234.90	201.40							
November	69.60	34.31	35.31	263.67	168.73	238.40	206.20							
December	69.94	34.31	35.31	263.67	168.73	233.70	205.60							
Yearly Average	76.57	35.55	36.59	272.76	168.73	249.57	218.03	68.25	34.31	35.31	263.67	168.73	236.12	206.68

Source: Central Bureau of Statistics Aruba

¹ Average West Texas Intermediate (WTI) crude oil price per barrel in US\$ (Source: U.S. Energy Information Administration)

² Total energy charge in Afl. cents per kWh

³ Electricity price in Afl. is based on an average household usage of 725.5 kWh

⁴ Water price in Afl. is based on an average household usage in m³

⁵ Gasoline and diesel prices in Afl. cents per liter

Change in prices of Food & catering services in May 2025

The “Food & catering services” index showed an increase of 0.3% in May 2025, after having increased 0.02% in April 2025. The index for “Food at home” showed an increase of 0.2% in May, as seven (7) of the eleven (11) “Food at home” indices increased in May 2025. The “Fruit” index registered the largest increase (1.4%) in May 2025. Furthermore, other significant increases were posted in the indices for “Meat” (0.9%) and “Non-alcoholic beverages” (0.4%).

The largest decrease in May 2025 was registered for the index of “Potatoes and other tubers” (-3.2%).

The index for “Food away from home” shows an increase of 0.4% in May 2025.

In May 2025, “Food at home” and “Food away from home” as a group showed an increase in price of 0.3% compared to April 2025 and had an effect of 0.05 ppts on the CPI, while the remaining goods and services, as a group, experienced a decrease in price of 0.4%, causing an effect of -0.37 ppts on the CPI.

Table 11 Effect on the CPI of Food at home and Food away from home May 2025

Category	Weight	Monthly		Yearly	
		Apr-25 vs May-25		May-24 vs May-25	
		Change %	Effect	Change %	Effect
Food at home	1,087.7	0.2	0.03	0.5	0.06
Food away from home	429.8	0.4	0.02	2.3	0.11
Total group	1,517.5	0.3	0.05	1.0	0.17
Remaining goods and services	8,482.5	-0.4	-0.37	-0.03	-0.02
CPI	10,000.0	-0.3	-0.32	0.1	0.15

Source: Central Bureau of Statistics Aruba

Table 10 Percentage change for Food & catering services

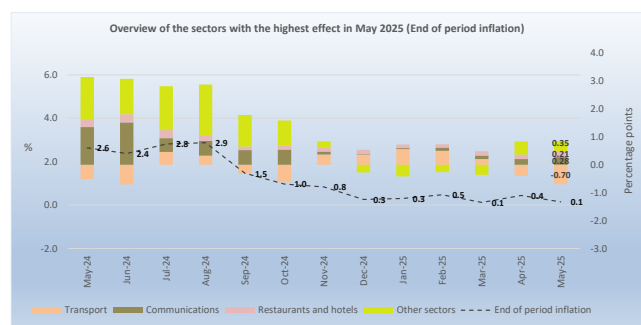
	Weight coefficient	Indices			Percentage changes			Effect	
		May-24	Apr-25	May-25	Monthly Mar - Apr	Monthly Apr - May	End of period May 24 - May 25	Monthly Apr - May	End of period May 24 - May 25
Food & catering services	1,517.5	118.87	119.77	120.10	0.0	0.28	1.0	0.046	0.170
Food at home	1,087.7	117.36	117.70	117.96	0.1	0.2	0.5	0.026	0.059
Bread and cereals	178.1	121.40	122.28	122.46	-0.1	0.1	0.9	0.003	0.017
Meat	242.5	117.08	118.68	119.71	-0.4	0.9	2.2	0.023	0.058
Fish and other seafood	49.0	107.87	109.49	109.51	0.9	0.0	1.5	0.000	0.007
Milk, cheese and eggs	135.3	126.49	126.46	125.83	-0.7	-0.5	-0.5	-0.008	-0.008
Oils and fats	32.2	122.23	126.62	126.81	-0.4	0.1	3.7	0.001	0.013
Fruit	97.6	109.31	102.47	103.94	-0.7	1.4	-4.9	0.013	-0.048
Potatoes and other tubers	18.2	83.35	96.83	93.73	3.3	-3.2	12.5	-0.005	0.017
Vegetables	89.1	98.17	91.28	90.40	1.1	-1.0	-7.9	-0.007	-0.063
Sugar, jam, honey and other confectionery	42.0	129.96	129.28	129.27	0.1	0.0	-0.5	0.000	-0.003
Food products n.e.c.	80.1	122.90	124.45	124.50	0.3	0.0	1.3	0.000	0.012
Non-alcoholic beverages	123.6	121.90	126.33	126.88	1.3	0.4	4.1	0.006	0.002
Food away from home	429.8	122.70	125.01	125.52	-0.1	0.4	2.3	0.020	0.110
Other goods and services	8,482.5	107.72	108.17	107.69	0.5	-0.4	0.0	-0.370	-0.023
Other goods	4,735.8	107.91	108.19	107.16	1.0	-1.0	-0.7	-0.447	-0.326
Other services	3,746.7	107.48	108.14	108.37	-0.2	0.2	0.8	0.077	0.303
CPI	10,000.0	109.41	109.93	109.57	0.4	-0.3	0.1	-0.324	0.146

Source: Central Bureau of Statistics Aruba

CPI for the period May 2024 – May 2025

Consumer Price Index

Over the last 12 months, the CPI increased by 0.1%. Nine (9) of the twelve (12) sectors registered increases in prices. The increases that had the greatest influence on the CPI were registered for the “Communications” (3.2%), “Restaurants and hotels” (4.3%), “Household operation” (1.7%), “Housing” (0.4%) and “Miscellaneous goods and services” (0.7%) sectors, which contributed with an effect of respectively, 0.28, 0.21, 0.15, 0.09 and 0.08 ppts. The increases in the remaining sectors had an effect of 0.21 ppts on the CPI of May 2024 - May 2025.



Aforementioned increases were partially offset by decreases in the indices for the “Transport” (-5.2%) and “Recreation and culture” (-2.0%) sectors, causing an effect of respectively, -0.70 and -0.17 ppts on the CPI of May 2024 - May 2025.

The increase in the “Communications” sector was mainly due to an increase in the category “Telephone and telefax equipment” (90.6%), which contributed with an effect of 0.28 ppts. The increase in the “Restaurants and hotels” sector was due to increases in the categories “Catering services” (2.3%) and “Accommodation services” (83.1%), which contributed to an effect of respectively 0.11 and 0.10 ppts. The increase in the “Household operation” sector was mainly due to an increase in the category “Tools and equipment for house and garden” (24.6%), which contributed to an effect of 0.16 ppts. The increase in the “Housing” sector was mainly due to an increase of 2.3% in the category “Maintenance and repair of the dwelling”, which contributed to an effect of 0.13 ppts. The increase in the “Miscellaneous goods and services” sector was mainly due to an increase in the category “Personal effects n.e.c.” (6.2%), which contributed with an effect of 0.07 ppts.

The decrease in the “Transport” sector was due to a decrease of 9.7% in the category “Operation of personal transport equipment”, which contributed to an effect of -0.84 ppts. The decrease in the “Recreation and culture” sector was mainly due to a decrease in the category “Holidays” (-6.6%), which contributed to an effect of -0.15 ppts.

Consumption basket

Over the last year 46.1% of the products in the consumption basket had an increase in price, causing an effect of 2.54 ppts, while 43.4% showed a decrease, contributing to an effect of -2.39 ppts and the remaining 10.5% had no change in price. The prices of goods registered a decrease of 0.5% and caused an influence of -0.27 ppts, while prices of services showed an increase (1.0%) and had an effect of 0.41 ppts.

Subsistence level

Over the last 12 months, the subsistence level for a household consisting of two (2) adults and two (2) children (aged 0-15 years) registered an increase of Afl. 18, from Afl. 5,492 in May 2024 to Afl. 5,510 in May 2025. This increase was mainly due to increases in the “Food and non-alcoholic beverages” (Afl. 11) and “Clothing and footwear” (Afl. 8) sectors.

Change in prices of crude oil, utilities, gasoline and diesel

The average price per barrel of crude oil registered a decrease of US\$ 18.23 (-22.7%) from US\$ 80.31 in May 2024 to US\$ 62.08 in May 2025.

The energy index decreased by 7.0% over the past 12 months and had an influence of -1.20 ppts. The indices of “Gasoline” (-16.5%) and “Diesel” (-17.6%) registered decreases over the last year, contributing with an effect of respectively, -0.84 and -0.06 ppts on the yearly CPI. The index of “Electricity” shows a decrease of 4.0% and contributed with an effect of -0.30 ppts, while the index of “Water” did not register any changes over this period. The remaining 404 goods and services, as a group, show an increase of 1.6% and had an effect of 1.35 ppts on the CPI.

Change in prices of Food & catering services

Over the last 12 months, the “Food & catering services” increased by 1.0%. The “Food at home” index showed an increase of 0.5%, where seven (7) of the “Food at home” food groups increased over this period.

The “Potatoes and other tubers” index increased by 12.5%, the largest increase among the “Food at home” food groups. Furthermore, other significant increases were posted in the indices for “Non-alcoholic beverages” (4.1%), “Oils and fats” (3.7%) and “Meat” (2.2%). The largest decrease during this period was registered in the index for “Vegetables” (-7.9%).

The index for “Food away from home” increased by 2.3% over the last 12 months.

Over the last 12 months, “Food at home” and “Food away from home” as a group showed an increase in price of 1.0% and had an effect of 0.17 ppts on the CPI, while the remaining goods and services, as a group, experienced a slight decrease in price of 0.03%, causing an effect of -0.03 ppts on the CPI.

APPENDIX 1

Monthly & Yearly Changes (%) in the Consumer Price Index, Total Population (Jun 2019 = 100) May-2025

DESCRIPTION	WEIGHT coefficient	2024 May	2024 Dec	2025 Apr	2025 May	May-24 Average 12 months	May-25 Average 12 months	Monthly Apr - May	Ytd Dec - May	End of period May 24 - May 25 12 months	Period average May 23/24 - May 24/25 24 months
Food and non-alcoholic beverages	1,087.7	117.36	118.98	117.70	117.96	115.99	118.08	0.2	-0.9	0.5	1.8
Food	964.1	116.78	118.37	116.59	116.81	115.46	117.26	0.2	-1.3	0.0	1.6
Non-alcoholic beverages	123.6	121.90	123.77	126.33	126.88	120.18	124.47	0.4	2.5	4.1	3.6
Alcoholic beverages and tobacco	78.2	110.81	110.49	111.47	111.20	110.54	110.72	-0.2	0.6	0.4	0.2
Alcoholic beverages for consumption at home	62.2	108.81	108.38	108.67	108.41	108.73	108.36	-0.2	0.0	-0.4	-0.3
Tobacco	16.0	118.62	118.68	122.33	122.05	117.55	119.86	-0.2	2.8	2.9	2.0
Clothing and footwear	276.8	85.88	90.21	88.85	88.83	87.89	88.70	0.0	-1.5	3.4	0.9
Clothing	212.8	86.32	92.67	90.39	90.80	88.80	90.82	0.4	-2.0	5.2	2.3
Footwear	64.0	84.42	82.04	83.73	82.29	84.90	81.65	-1.7	0.3	-2.5	-3.8
Housing	2,522.2	111.91	110.83	112.31	112.31	110.91	111.73	0.0	1.3	0.4	0.7
Actual rentals for housing	666.7	107.59	108.53	109.06	109.20	106.86	108.46	0.1	0.6	1.5	1.5
Imputed rentals for housing	34.4	94.59	94.59	94.59	94.59	94.59	94.59	0.0	0.0	0.0	0.0
Maintenance and repair of the dwelling	517.0	122.11	122.07	125.11	124.92	118.16	122.64	-0.2	2.3	2.3	3.8
Water supply and miscellaneous services relating to the dwelling	463.6	121.83	121.83	122.92	122.92	121.83	122.29	0.0	0.9	0.9	0.4
Electricity, gas and other fuels	840.4	104.30	100.34	101.89	101.89	104.30	102.50	0.0	1.5	-2.3	-1.7
Household operation	929.2	101.94	102.95	106.17	103.70	103.40	103.54	-2.3	0.7	1.7	0.1
Furniture, furnishings, carpets and other floor coverings	128.8	85.36	84.27	74.29	82.20	81.97	83.94	10.6	-2.5	-3.7	2.4
Household textiles	58.6	67.59	58.39	60.26	55.79	71.35	61.49	-7.4	-4.4	-17.5	-13.8
Household appliances	246.0	96.54	97.94	113.58	101.01	103.54	100.53	-11.1	3.1	4.6	-2.9
Glassware, tableware and household utensils	17.2	57.84	67.66	55.92	54.22	59.59	57.46	-3.0	-19.9	-6.3	-3.6
Tools and equipment for house and garden	58.2	123.18	144.22	151.53	153.53	140.70	141.37	1.3	6.5	24.6	0.5
Goods and services for routine household maintenance and cleaning	420.5	113.84	113.55	113.78	113.67	110.98	113.81	-0.1	0.1	-0.1	2.6
Health	223.1	103.31	105.17	106.19	106.64	101.72	104.28	0.4	1.4	3.2	2.5
Medical products, appliances and equipment	152.3	100.15	104.41	106.03	105.79	99.04	102.48	-0.2	1.3	5.6	3.5
Out-patient services	52.4	110.13	108.60	108.37	108.38	108.22	108.96	0.0	-0.2	-1.6	0.7
Other treatments	7.8	102.13	100.68	100.48	100.17	100.95	100.91	-0.3	-0.5	-1.9	0.0
Health products and services n.e.c.	10.5	115.90	102.44	101.80	115.19	108.80	109.65	13.2	12.4	-0.6	0.8
Transport	1,257.4	116.83	111.97	112.44	110.77	112.88	112.91	-1.5	-1.1	-5.2	0.0
Purchase of vehicles	442.6	109.46	109.56	109.15	111.70	103.49	109.60	2.3	2.0	2.0	5.9
Operation of personal transport equipment	763.3	123.53	114.66	115.61	111.50	120.23	116.60	-3.6	-2.8	-9.7	-3.0
Transport services	51.5	80.83	92.84	93.58	91.98	84.57	86.74	-1.7	-0.9	13.8	2.6
Communications	849.6	111.38	111.79	115.01	114.96	107.88	112.63	0.0	2.8	3.2	4.4
Telephone and telefax equipment	43.8	76.08	84.01	145.89	145.03	78.33	100.07	-0.6	72.6	90.6	27.8
Telephone and telefax services	805.8	113.30	113.30	113.33	113.33	109.49	113.31	0.0	0.0	0.0	3.5
Recreation and culture	1,013.3	94.90	94.84	93.42	93.04	96.09	93.65	-0.4	-1.9	-2.0	-2.5
Audio-visual, photographic and information processing equipment	58.5	81.93	68.89	70.61	68.51	75.26	70.96	-3.0	-0.5	-16.4	-5.7
Other major durables for recreation and culture	20.0	91.55	91.62	103.07	103.60	95.62	99.65	0.5	13.1	13.2	4.2
Other recreational items and equipment; gardens and pets	266.6	111.43	108.68	107.30	107.56	109.58	108.64	0.2	-1.0	-3.5	-0.9
Recreational and cultural services	309.1	102.23	103.61	105.99	106.04	101.93	103.55	0.0	2.3	3.7	1.6
Newspapers, books and stationery	43.7	83.56	75.72	81.22	86.70	88.60	79.58	6.7	14.5	3.8	-10.2
Holidays	315.4	77.94	82.21	74.67	72.78	83.91	77.07	-2.5	-11.5	-6.6	-8.2
Education	98.0	131.23	131.23	131.23	131.23	126.39	131.23	0.0	0.0	0.0	3.8
Pre primary and primary education	24.0	142.86	142.86	142.86	142.86	135.71	142.86	0.0	0.0	0.0	5.3
Secondary education	43.4	145.73	145.73	145.73	145.73	138.76	145.73	0.0	0.0	0.0	5.0
Post-secondary non-tertiary education	4.6	100.00	100.00	100.00	100.00	100.00	100.00	0.0	0.0	0.0	0.0
Tertiary education	23.6	100.00	100.00	100.00	100.00	100.00	100.00	0.0	0.0	0.0	0.0
Education not definable by level	2.5	120.00	120.00	120.00	120.00	120.00	120.00	0.0	0.0	0.0	0.0
Restaurants and hotels	442.0	122.37	122.96	125.24	127.66	119.08	123.34	1.9	3.8	4.3	3.6
Catering services	429.8	122.70	123.90	125.01	125.52	120.47	123.98	0.4	1.3	2.3	2.9
Accommodation services	12.2	110.99	89.67	133.35	203.19	70.11	100.92	52.4	126.6	83.1	43.9
Miscellaneous goods and services	1,222.6	105.83	106.29	106.67	106.53	104.55	106.56	-0.1	0.2	0.7	1.9
Personal care	427.1	105.07	104.80	105.16	105.22	104.38	105.61	0.1	0.4	0.1	1.2
Personal effects n.e.c.	106.6	119.47	125.78	128.69	126.83	107.80	125.62	-1.4	0.8	6.2	16.5
Social protection	78.2	133.33	133.33	133.33	133.33	133.33	133.33	0.0	0.0	0.0	0.0
Insurance	610.7	100.46	100.46	100.46	100.46	100.42	100.46	0.0	0.0	0.0	0.0
CPI	10,000.0	109.41	109.07	109.93	109.57	108.14	109.31	-0.3	0.5	0.1	1.1

Source: Central Bureau of Statistics Aruba

The Period average (last 24 months) change is calculated by comparing the average index for the most recent 12-month period compared with the average index of the preceding 12-month period.

APPENDIX 2

Effect on the Consumer Price Index per sector and category, Total Population (Jun 2019 = 100) May-2025

DESCRIPTION	WEIGHT coefficient	Monthly Apr - May	Ytd Dec - May	End of period May 24 - May 25 12 months	Period average May 23/24 - May 24/25 24 months
Food and non-alcoholic beverages	1,087.7	0.03	-0.10	0.06	0.21
Food	964.1	0.02	-0.14	0.00	0.16
Non-alcoholic beverages	123.6	0.01	0.04	0.06	0.05
Alcoholic beverages and tobacco	78.2	0.00	0.01	0.00	0.00
Alcoholic beverages for consumption at home	62.2	0.00	0.00	0.00	0.00
Tobacco	16.0	0.00	0.00	0.01	0.00
Clothing and footwear	276.8	0.00	-0.04	0.07	0.02
Clothing	212.8	0.01	-0.04	0.09	0.04
Footwear	64.0	-0.01	0.00	-0.01	-0.02
Housing	2,522.2	0.00	0.34	0.09	0.19
Actual rentals for housing	666.7	0.01	0.04	0.10	0.10
Imputed rentals for housing	34.4	0.00	0.00	0.00	0.00
Maintenance and repair of the dwelling	517.0	-0.01	0.13	0.13	0.21
Water supply and miscellaneous services relating to the dwelling	463.6	0.00	0.05	0.05	0.02
Electricity, gas and other fuels	840.4	0.00	0.12	-0.18	-0.14
Household operation	929.2	-0.21	0.06	0.15	0.01
Furniture, furnishings, carpets and other floor coverings	128.8	0.09	-0.02	-0.04	0.02
Household textiles	58.6	-0.02	-0.01	-0.06	-0.05
Household appliances	246.0	-0.28	0.07	0.10	-0.07
Glassware, tableware and household utensils	17.2	0.00	-0.02	-0.01	0.00
Tools and equipment for house and garden	58.2	0.01	0.05	0.16	0.00
Goods and services for routine household maintenance and cleaning	420.5	0.00	0.00	-0.01	0.11
Health	223.1	0.01	0.03	0.07	0.05
Medical products, appliances and equipment	152.3	0.00	0.02	0.08	0.05
Out-patient services	52.4	0.00	0.00	-0.01	0.00
Other treatments	7.8	0.00	0.00	0.00	0.00
Health products and services n.e.c.	10.5	0.01	0.01	0.00	0.00
Transport	1,257.4	-0.19	-0.14	-0.70	0.00
Purchase of vehicles	442.6	0.10	0.09	0.09	0.25
Operation of personal transport equipment	763.3	-0.29	-0.22	-0.84	-0.26
Transport services	51.5	-0.01	0.00	0.05	0.01
Communications	849.6	0.00	0.25	0.28	0.37
Telephone and telefax equipment	43.8	0.00	0.25	0.28	0.09
Telephone and telefax services	805.8	0.00	0.00	0.00	0.28
Recreation and culture	1,013.3	-0.03	-0.17	-0.17	-0.23
Audio-visual, photographic and information processing equipment	58.5	-0.01	0.00	-0.07	-0.02
Other major durables for recreation and culture	20.0	0.00	0.02	0.02	0.01
Other recreational items and equipment; gardens and pets	266.6	0.01	-0.03	-0.09	-0.02
Recreational and cultural services	309.1	0.00	0.07	0.11	0.05
Newspapers, books and stationery	43.7	0.02	0.04	0.01	-0.04
Holidays	315.4	-0.05	-0.27	-0.15	-0.20
Education	98.0	0.00	0.00	0.00	0.04
Pre primary and primary education	24.0	0.00	0.00	0.00	0.02
Secondary education	43.4	0.00	0.00	0.00	0.03
Post-secondary non-tertiary education	4.6	0.00	0.00	0.00	0.00
Tertiary education	23.6	0.00	0.00	0.00	0.00
Education not definable by level	2.5	0.00	0.00	0.00	0.00
Restaurants and hotels	442.0	0.10	0.19	0.21	0.17
Catering services	429.8	0.02	0.06	0.11	0.14
Accommodation services	12.2	0.08	0.13	0.10	0.03
Miscellaneous goods and services	1,222.6	-0.02	0.03	0.08	0.23
Personal care	427.1	0.00	0.02	0.01	0.05
Personal effects n.e.c.	106.6	-0.02	0.01	0.07	0.18
Social protection	78.2	0.00	0.00	0.00	0.00
Insurance	610.7	0.00	0.00	0.00	0.00
CPI	10,000.0	-0.32	0.46	0.15	1.08

Source: Central Bureau of Statistics Aruba

APPENDIX 3

Monthly & Yearly Changes (%) and effect in the Food & catering services, Total Population (Jun 2019 = 100) May-2025

DESCRIPTION	WEIGHT coefficient	% Change		Effect	
		Monthly Apr - May	End of period May 24 - May 25 12 months	Monthly Apr - May	End of period May 24 - May 25 12 months
Food & catering services	1,517.5	0.3	1.0	0.046	0.170
Food at home	1,087.7	0.2	0.5	0.026	0.059
Bread and cereals	178.1	0.1	0.9	0.003	0.017
Rice	23.5	1.4	1.3	0.004	0.004
Bread	72.1	-0.3	-0.5	-0.002	-0.004
Pasta products	9.2	-0.5	-0.1	-0.001	0.000
Other cereals and cereal products	73.3	0.2	2.2	0.002	0.017
Meat	242.5	0.9	2.2	0.023	0.058
Bovine	67.3	1.4	2.8	0.010	0.020
Swine	25.5	-0.4	1.7	-0.001	0.004
Poultry	75.7	1.1	3.1	0.009	0.026
Other meat and meat preparations	74.0	0.5	1.0	0.004	0.008
Fish and other seafood	49.0	0.0	1.5	0.000	0.007
Fish and seafood preparations	49.0	0.0	1.5	0.000	0.007
Milk, cheese and eggs	135.3	-0.5	-0.5	-0.008	-0.008
Cheese	55.4	0.1	1.4	0.001	0.008
Eggs	16.6	-5.0	0.2	-0.013	0.001
Milk	40.0	1.1	-1.1	0.005	-0.005
Other milk products	23.3	0.0	-4.9	0.000	-0.012
Oils and fats	32.2	0.1	3.7	0.001	0.013
Corn oil	2.8	0.4	-7.0	0.000	-0.003
Butter and margarine	9.2	0.1	3.4	0.000	0.003
Other oils and fats	20.1	0.1	5.6	0.000	0.013
Fruit	97.6	1.4	-4.9	0.013	-0.048
Oranges	9.4	1.9	-3.1	0.002	-0.004
Bananas and plantains	19.9	-5.5	-6.2	-0.008	-0.009
Apples	9.3	0.2	-5.1	0.000	-0.005
Avocado	5.0	19.0	-3.5	0.008	-0.002
Grapes	9.2	5.8	-18.1	0.005	-0.022
Nuts	11.9	-0.9	1.5	-0.001	0.002
Lemons and mandarins	6.0	6.8	-4.0	0.003	-0.002
Cherries and strawberries	8.8	8.2	-6.7	0.008	-0.008
Melons and watermelons	7.7	-4.3	-7.0	-0.003	-0.005
Papayas and pineapples	6.9	-0.9	6.3	0.000	0.003
Other fruits and fruit products	3.5	-3.5	9.8	-0.001	0.003
Potatoes and other tubers	18.2	-3.2	12.5	-0.005	0.017
Potatoes	12.2	-7.5	14.0	-0.007	0.010
Other tubers	2.0	0.7	5.1	0.000	0.001
Sweet potatoes and yucca	4.0	3.6	14.5	0.002	0.006
Vegetables	89.1	-1.0	-7.9	-0.007	-0.063
Lettuce	6.8	5.0	-50.8	0.001	-0.018
Tomatoes	9.7	-3.1	-18.5	-0.003	-0.020
Onions and garlic	18.7	-0.6	-6.6	-0.001	-0.011
Celery and broccoli	15.3	0.4	-5.1	0.000	-0.006
Other vegetables	15.3	-4.4	-10.2	-0.005	-0.013
Other preserved or processed vegetables	8.4	-0.6	0.7	-0.001	0.001
Frozen vegetable mixtures	14.8	0.7	2.2	0.001	0.003
Sugar, jam, honey and other confectionery	42.0	0.0	-0.5	0.000	-0.003
Sugar	12.1	-0.5	-2.7	-0.001	-0.005
Jams and jellies	2.5	-0.5	-0.3	0.000	0.000
Other confectionery products	27.5	0.3	0.6	0.001	0.002
Food products n.e.c.	80.1	0.0	1.3	0.000	0.012
Other food products	80.1	0.0	1.3	0.000	0.012
Non-alcoholic beverages	123.6	0.4	4.1	0.006	0.056
Coffee and tea	20.9	-0.5	7.4	-0.001	0.017
Other non-alcoholic beverages	14.6	0.6	0.4	0.001	0.001
Soft and sports drinks	31.0	0.7	-1.8	0.002	-0.006
Fruit juices	57.1	0.6	7.0	0.004	0.045
Food away from home	429.8	0.4	2.3	0.020	0.110
Food and beverage consumption away from home	429.8	0.4	2.3	0.020	0.110
Other goods and services	8,482.5	-0.4	0.0	-0.370	-0.023
Other goods	4,735.8	-1.0	-0.7	-0.447	-0.326
Other services	3,746.7	0.2	0.8	0.077	0.303
CPI	10,000	-0.3	0.1	-0.324	0.146

Source: Central Bureau of Statistics Aruba

APPENDIX 4

Overview of the Consumer Price Index (CPI), 2024 - 2025 (Jun 2019 = 100)

					YEAR: 2025				YEAR: 2024			
	Base	Base	Base	Base	CHANGE				CHANGE			
	Jun-19 =100.0	Jun-19 =100.0	Jun-19 =100.0	Jun-19 =100.0	Monthly	Year-to date	Yearly 12 months	Period average 24 months	Monthly	Year-to date	Yearly 12 months	Period average 24 months
	<u>Jan.'24</u>	<u>Dec.'23</u>	<u>Jan.'25</u>	<u>Dec.'24</u>								
Total Population	108.31	108.79	108.65	109.07	-0.4	-0.4	0.3	1.6	-0.4	-0.4	1.5	2.9
Low Income	109.03	109.37	109.40	109.69	-0.3	-0.3	0.3		-0.3	-0.3	2.1	
High Income	107.96	108.48	108.25	108.73	-0.4	-0.4	0.3		-0.5	-0.5	1.3	
	<u>Feb.'24</u>	<u>Jan.'24</u>	<u>Feb.'25</u>	<u>Jan.'25</u>								
Total Population	108.57	108.31	109.09	108.65	0.4	0.02	0.5	1.6	0.2	-0.2	0.9	2.4
Low Income	109.29	109.03	109.74	109.40	0.3	0.04	0.4		0.2	-0.1	1.5	
High Income	108.20	107.96	108.74	108.25	0.5	0.00	0.5		0.2	-0.3	0.6	
	<u>Mar.'24</u>	<u>Feb.'24</u>	<u>Mar.'25</u>	<u>Feb.'25</u>								
Total Population	109.37	108.57	109.50	109.09	0.4	0.4	0.1	1.4	0.7	0.5	1.8	2.1
Low Income	109.97	109.29	110.11	109.74	0.3	0.4	0.1		0.6	0.5	2.3	
High Income	109.05	108.20	109.17	108.74	0.4	0.4	0.1		0.8	0.5	1.5	
	<u>Apr.'24</u>	<u>Mar.'24</u>	<u>Apr.'25</u>	<u>Mar.'25</u>								
Total Population	109.45	109.37	109.93	109.50	0.4	0.8	0.4	1.3	0.1	0.6	2.2	1.9
Low Income	109.87	109.97	110.70	110.11	0.5	0.9	0.8		-0.1	0.5	2.4	
High Income	109.25	109.05	109.53	109.17	0.3	0.7	0.3		0.2	0.7	2.1	
	<u>May'24</u>	<u>Apr.'24</u>	<u>May'25</u>	<u>Apr.'25</u>								
Total Population	109.41	109.45	109.57	109.93	-0.3	0.5	0.1	1.1	-0.03	0.6	2.6	1.8
Low Income	109.92	109.87	110.34	110.70	-0.3	0.6	0.4		0.05	0.5	2.9	
High Income	109.14	109.25	109.17	109.53	-0.3	0.4	0.0		-0.1	0.6	2.5	
	<u>Jun'24</u>	<u>May'24</u>	<u>Jun'25</u>	<u>May'25</u>								
Total Population	108.72	109.41							-0.6	-0.1	2.4	1.7
Low Income	109.39	109.92							-0.5	0.0	2.9	
High Income	108.37	109.14							-0.7	-0.1	2.1	
	<u>Jul'24</u>	<u>Jun'24</u>	<u>Jul'25</u>	<u>Jun'25</u>								
Total Population	109.20	108.72							0.4	0.4	2.8	1.8
Low Income	109.80	109.39							0.4	0.4	2.4	
High Income	108.87	108.37							0.5	0.4	3.0	
	<u>Aug.'24</u>	<u>Jul'24</u>	<u>Aug.'25</u>	<u>Jul'25</u>								
Total Population	110.01	109.20							0.7	1.1	2.9	2.0
Low Income	110.50	109.80							0.6	1.0	2.4	
High Income	109.74	108.87							0.8	1.2	3.1	
	<u>Sep.'24</u>	<u>Aug.'24</u>	<u>Sep.'25</u>	<u>Aug.'25</u>								
Total Population	109.58	110.01							-0.4	0.7	1.5	2.0
Low Income	110.18	110.50							-0.3	0.7	1.2	
High Income	109.26	109.74							-0.4	0.7	1.6	
	<u>Oct.'24</u>	<u>Sep.'24</u>	<u>Oct.'25</u>	<u>Sep.'25</u>								
Total Population	109.19	109.58							-0.4	0.4	1.0	2.0
Low Income	109.94	110.18							-0.2	0.5	0.9	
High Income	108.79	109.26							-0.4	0.3	1.0	
	<u>Nov.'24</u>	<u>Oct.'24</u>	<u>Nov.'25</u>	<u>Oct.'25</u>								
Total Population	109.25	109.19							0.1	0.4	0.8	1.9
Low Income	109.72	109.94							-0.2	0.3	0.6	
High Income	108.98	108.79							0.2	0.5	0.9	
	<u>Dec.'24</u>	<u>Nov.'24</u>	<u>Dec.'25</u>	<u>Nov.'25</u>								
Total Population	109.07	109.25							-0.2	0.3	0.3	1.7
Low Income	109.69	109.72							0.0	0.3	0.3	
High Income	108.73	108.98							-0.2	0.2	0.2	

Source: Central Bureau of Statistics Aruba

APPENDIX 5

Prices of crude oil, utilities and gasoline, 2001 - 2025

		Electricity components							
Month	Crude Crude oil ¹	Total energy charge ²			Fixed charge ³	Electricity ⁴	Water ⁵	Gasoline ⁶	Diesel ⁶
		≤ 500 kWh	501 - 1000 kWh	> 1001 kWh					
Average 2001	26.01	24.59	22.09	22.09	0.00	172.79	89.40	128.34	90.10
Average 2002	26.06	24.89	22.39	22.39	0.00	174.91	90.82	127.20	88.68
Average 2003	34.49	27.02	24.52	24.52	0.00	190.38	99.21	139.21	100.18
Average 2004	41.31	27.18	24.68	24.68	0.00	191.57	100.02	152.51	113.05
Average 2005	56.36	31.10	28.60	28.60	0.00	219.97	113.69	167.74	136.04
Average 2006	66.12	35.91	33.41	33.41	0.00	254.88	128.70	176.22	149.77
Average 2007	72.08	36.59	34.09	34.09	0.00	259.84	133.59	200.43	168.38
Average 2008	99.87	45.67	43.17	43.17	0.00	325.67	161.80	228.19	214.48
Average 2009	61.46	37.33	34.83	34.83	0.00	265.17	139.60	175.15	142.53
Average 2010	79.22	43.92	41.42	41.42	0.00	312.98	159.21	193.43	163.22
Average 2011	94.74	47.58	47.57	47.57	0.00	345.14	177.47	229.48	203.46
Average 2012	94.25	47.68	51.21	53.46	0.00	353.85	171.13	235.53	210.07
Average 2013	98.00	41.10	44.90	58.40	0.00	306.75	137.05	229.48	205.83
Average 2014	93.49	42.58	45.32	57.77	0.63	315.71	137.05	224.24	200.21
Average 2015	48.71	47.02	46.56	55.87	2.50	342.59	137.05	179.74	147.80
Average 2016	43.17	40.40	41.80	47.64	12.50	308.76	137.05	165.87	131.12
Average 2017	50.85	34.52	35.72	45.93	12.50	265.65	137.05	180.79	147.69
Average 2018	65.08	34.52	35.72	45.93	12.50	265.65	137.05	204.95	177.59
Average 2019	56.84	34.52	35.72	45.93	12.50	265.65	137.05	202.67	176.53
Average 2020	39.25	31.09	31.99	42.09	12.50	240.09	137.05	177.93	143.26
Average 2021	67.78	31.09	31.99	42.09	12.50	240.09	137.05	223.34	181.95
Average 2022	95.16	34.19	35.18	46.29	12.50	262.78	150.17	275.90	263.17
Average 2023	77.67	36.71	37.78	49.70	12.50	281.24	168.73	260.17	235.78
January-24	73.56	35.80	36.84	48.47	12.50	274.57	168.73	232.90	213.60
February-24	76.93	35.80	36.84	48.47	12.50	274.57	168.73	245.40	227.80
March-24	81.01	35.80	36.84	48.47	12.50	274.57	168.73	255.60	236.40
April-24	85.50	35.80	36.84	48.47	12.50	274.57	168.73	266.90	230.10
May-24	80.31	35.80	36.84	48.47	12.50	274.57	168.73	269.00	228.20
June-24	79.89	35.80	36.84	48.47	12.50	274.57	168.73	257.60	217.70
July-24	82.57	35.80	36.84	48.47	12.50	274.57	168.73	251.60	218.50
August-24	76.79	35.80	36.84	48.47	12.50	274.57	168.73	257.60	220.70
September-24	70.30	35.80	36.84	48.47	12.50	274.57	168.73	251.20	210.20
October-24	72.48	35.80	36.84	48.47	12.50	274.57	168.73	234.90	201.40
November-24	69.60	34.31	35.31	46.45	12.50	263.67	168.73	238.40	206.20
December-24	69.94	34.31	35.31	46.45	12.50	263.67	168.73	233.70	205.60
Average 2024	76.57	35.55	36.59	48.13	12.50	272.76	168.73	249.57	218.03
January-25	75.32	34.31	35.31	46.45	12.50	263.67	168.73	233.50	204.90
February-25	71.56	34.31	35.31	46.45	12.50	263.67	168.73	241.70	218.20
March-25	68.06	34.31	35.31	46.45	12.50	263.67	168.73	241.00	216.10
April-25	64.22	34.31	35.31	46.45	12.50	263.67	168.73	239.90	206.20
May-25	62.08	34.31	35.31	46.45	12.50	263.67	168.73	224.50	188.00
June-25									
July-25									
August-25									
September-25									
October-25									
November-25									
December-25									
Average 2025	68.25	34.31	35.31	46.45	12.50	263.67	168.73	236.12	206.68
Source: Central Bureau of Statistics Aruba									

Source: Central Bureau of Statistics Aruba

¹ Average West Texas Intermediate (WTI) crude oil price per barrel in US\$ (Source: U.S. Energy Information Administration)

² Total energy charge in Afl. cents per kWh

³ Fixed charge was introduced in October 2014 at Afl. 2.50

⁴ Electricity price in Afl. is based on an average household usage of 725.5 kWh

⁵ Water price in Afl. is based on an average household usage

⁶ Gasoline and diesel prices in Afl. cents per liter

APPENDIX 6

