

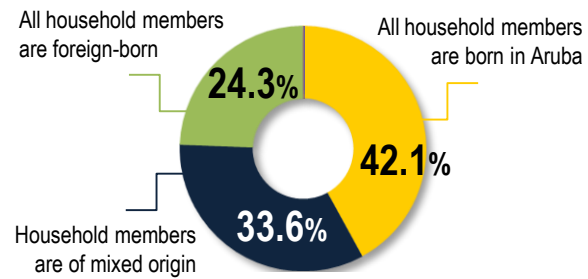
Table 1. Total population by age and sex, CBS estimates

	End of year			3 <sup>rd</sup> Q 2022			Index (2020=100)
	2019	2020	2021	Male	Female	Total	
0-4 yrs.	6,229	5,211	5,002	2,459	2,264	4,723	-10.14
5-9 yrs.	6,669	6,293	6,146	3,066	2,902	5,969	-5.56
10-14 yrs.	6,924	6,898	6,688	3,248	3,290	6,538	-6.04
15-19 yrs.	6,801	6,898	6,806	3,523	3,237	6,760	-1.41
20-24 yrs.	5,730	5,467	5,288	2,609	2,493	5,102	-6.25
25-29 yrs.	6,261	6,054	5,933	2,874	2,866	5,740	-5.95
30-34 yrs.	6,657	6,678	6,588	3,170	3,454	6,624	-1.78
35-39 yrs.	7,012	6,904	6,941	3,209	3,698	6,907	-0.17
40-44 yrs.	7,382	7,270	7,284	3,322	3,918	7,241	-0.59
45-49 yrs.	8,185	7,588	7,330	3,271	3,935	7,206	-6.28
50-54 yrs.	8,449	8,426	8,366	3,697	4,563	8,260	-2.38
55-59 yrs.	9,141	8,813	8,663	3,874	4,631	8,505	-4.16
60-64 yrs.	7,690	8,016	8,278	3,840	4,554	8,395	5.33
65-69 yrs.	6,028	6,436	6,625	3,059	3,780	6,839	6.70
70-74 yrs.	4,197	4,567	4,804	2,270	2,718	4,988	9.98
75-79 yrs.	2,721	3,018	3,187	1,402	1,948	3,350	12.23
80-84 yrs.	1,833	1,966	2,006	844	1,177	2,021	2.81
85-89 yrs.	918	990	1,057	359	736	1,095	13.63
90-94 yrs.	313	343	359	134	240	374	11.04
95+ yrs.	100	97	105	33	70	103	11.43
Total	109,241	107,932	107,457	50,264	56,475	106,739	-1.32

Source: 2020 Census and the Population Registry Office

Note: Total number of officially registered persons in the Population Registry Office as of 30 September 2022: 112,206 persons

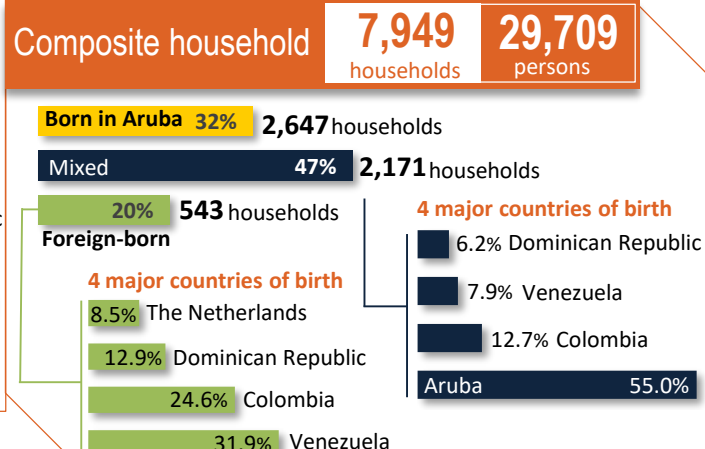
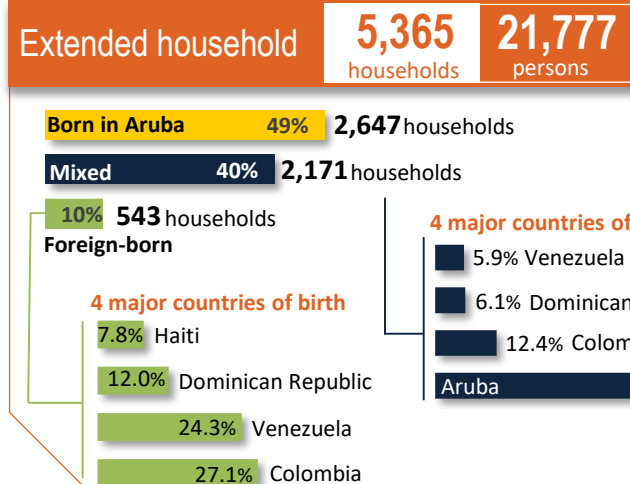
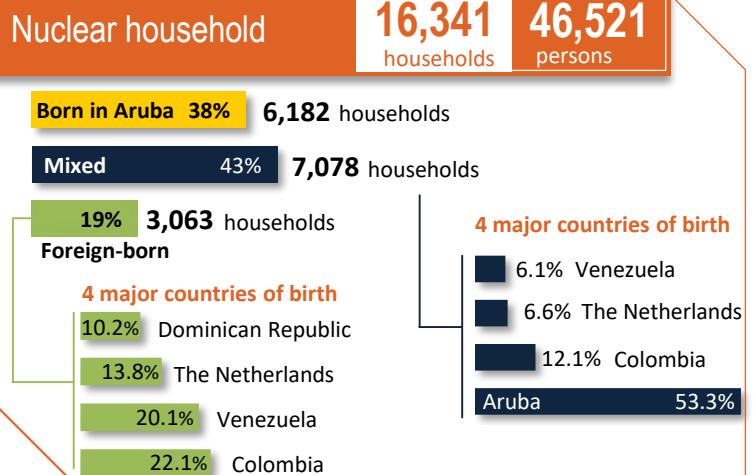
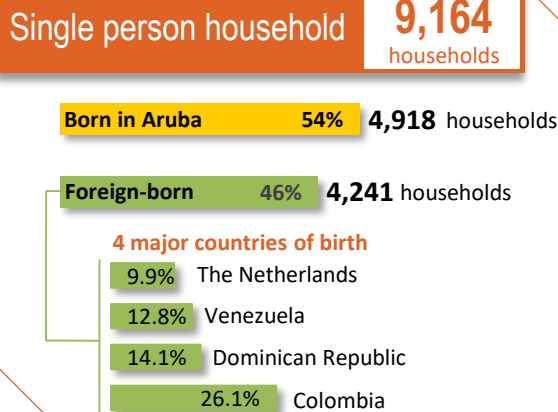
## Households by country of birth of household members, 2020



## Country of birth of household members by type of household, 2020

	All household members are born in Aruba	Household members are of mixed origin	All household members are foreign-born
Single person household	30.1%		45.0%
Nuclear household	37.9%	54.3%	32.5%
Extended household	16.2%	16.7%	5.8%
Composite household	15.8%	29.0%	16.7%

## Households (legal constellation) by country of birth of household members (in normal living quarters), 2020



Source: 6<sup>th</sup> Population and Housing Census 2020

Note: the information on households excludes collective living quarters

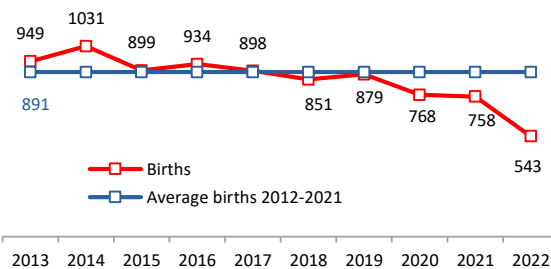
**Table 2. Live births by age of mother**

	End of year			YTD				3 <sup>rd</sup> Q 2022*		
	2019	2020	2021	2019	2020	2021	2022*	Male	Female	Total
	< 15 yrs.	-	1	1	-	1	1	-	-	-
15-19 yrs.	77	77	44	61	47	34	19	1	4	5
20-24 yrs.	267	201	197	210	145	148	99	19	21	40
25-29 yrs.	343	292	287	254	200	227	158	30	29	59
30-34 yrs.	284	268	253	204	211	179	159	27	21	48
35-39 yrs.	170	167	176	118	129	133	82	13	17	30
40-44 yrs.	41	41	49	30	30	35	26	4	2	6
45-49 yrs.	1	5	1	1	5	1	-	-	-	-
50+ yrs.	1	-	-	1	-	-	-	-	-	-
<b>Total</b>	<b>1,184</b>	<b>1,052</b>	<b>1,008</b>	<b>879</b>	<b>768</b>	<b>758</b>	<b>543</b>	<b>94</b>	<b>94</b>	<b>188</b>

Source: Population Registry Office

\* Excluding revision

**Graph 2. Births and 2012-2021 avg, third quarters**

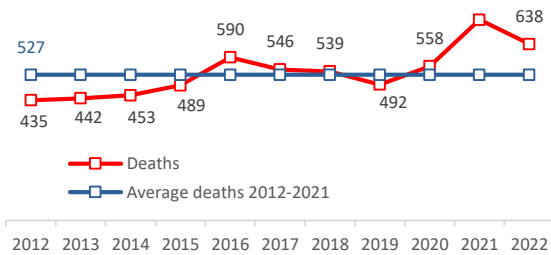


**Table 3. Deaths by age and sex**

	End of year			YTD				3 <sup>rd</sup> Q 2022		
	2019	2020	2021	2019	2020	2021	2022	Male	Female	Total
	< 1 yrs.	5	4	4	3	4	4	2	-	-
1-49 yrs.	44	37	57	33	31	41	34	9	4	13
50-59 yrs.	57	79	84	46	61	61	40	6	5	11
60-69 yrs.	138	127	209	101	95	166	122	23	11	34
70-79 yrs.	188	200	265	138	144	203	161	25	29	54
80-89 yrs.	175	234	266	125	175	199	206	33	32	65
90+ yrs.	64	62	79	46	48	52	73	4	14	18
<b>Total</b>	<b>671</b>	<b>743</b>	<b>964</b>	<b>492</b>	<b>558</b>	<b>726</b>	<b>638</b>	<b>100</b>	<b>95</b>	<b>195</b>

Source: Population Registry Office

**Graph 3. Deaths and 2012-2021 avg, third quarters**

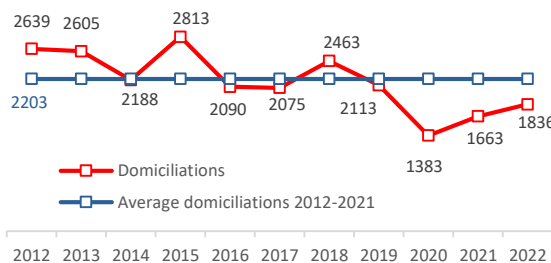


**Table 4. Domiciliation by nationality and place of birth**

	End of year			YTD				3 <sup>rd</sup> Q 2022		
	2019	2020	2021	2019	2020	2021	2022	Male	Female	Total
	Dutch born in Aruba/Dutch Antilles	694	619	644	532	466	489	494	101	95
Dutch born in the Netherlands	445	386	395	332	305	321	347	98	78	176
Dutch born elsewhere	216	196	237	158	128	185	135	18	32	50
Foreign-born	1,428	630	889	1,071	472	650	841	108	175	283
Unknown	26	15	28	20	12	18	19	3	5	8
<b>Total</b>	<b>2,809</b>	<b>1,846</b>	<b>2,193</b>	<b>2,113</b>	<b>1,383</b>	<b>1,663</b>	<b>1,836</b>	<b>328</b>	<b>385</b>	<b>713</b>

Source: Population Registry Office

**Graph 4. Domiciliation and 2012-2021 avg, third quarters**



**Table 5. Departures by nationality and place of birth**

	End of year			YTD				3 <sup>rd</sup> Q 2022		
	2019	2020	2021	2019	2020	2021	2022	Male	Female	Total
	Dutch born in Aruba/Dutch Antilles	1623	1,772	1686	1336	1,392	1430	1415	416	425
Dutch born in the Netherlands	581	585	447	487	503	406	358	110	112	222
Dutch born elsewhere	488	524	286	409	377	229	304	57	92	149
Foreign-born	551	581	292	445	395	218	382	81	110	191
Unknown	1	-	1	1	-	-	-	-	-	-
<b>Total</b>	<b>3,245</b>	<b>3,463</b>	<b>2,712</b>	<b>2,679</b>	<b>2,668</b>	<b>2,283</b>	<b>2,459</b>	<b>664</b>	<b>739</b>	<b>1,403</b>

Source: Population Registry Office

**Graph 5. Departures and 2012-2021 avg, third quarters**

