



Table of Contents

A note to the reader.....	ii
1 MONTHLY CHANGE OF THE CPI	1
1.1 CPI AND INFLATION	1
1.2 CHANGES IN SECTOR	1
1.3 CHANGES IN CATEGORIES AND SUBCATEGORIES	1
2 END OF PERIOD CHANGE OF THE CPI	2
2.1 END OF PERIOD CHANGE CPI FOR APRIL 2020.....	2
2.2 CHANGES IN SECTOR	2
2.3 CHANGES IN CATEGORIES.....	2
2.4 END OF YEAR CHANGE CPI 2011 - 2020	2
2.5 PERIOD AVERAGE CHANGE CPI FOR APRIL 2020	2
3 DEVELOPMENT OF INDICES OF MAIN SECTORS AND UTILITIES.....	3
3.1 INDICES MAIN SECTORS	3
3.2 ELECTRICITY	3
3.3 WATER.....	3
3.4 GASOLINE AND DIESEL.....	3
4 PERCENTAGE CHANGE CPI OF ARUBA’S MAJOR TRADING PARTNERS	4
4.1 COMPARISON OF THE CPI OF ARUBA AND THE USA	4
5 CORE INFLATION	5
5.1 CORE INFLATION	5
5.2 MONTHLY CHANGE OF THE CORE INFLATION.....	5
5.3 END OF YEAR CHANGE OF THE CORE INFLATION, 2015 - 2020	5
6 DEVELOPMENT OF FOOD & CATERING SERVICES.....	6
6.1 MONTHLY CHANGE OF FOOD & CATERING SERVICES FOR APRIL 2020	6
6.2 END OF PERIOD CHANGE OF FOOD & CATERING SERVICES FOR APRIL 2020	6
7 SUBSISTENCE LEVEL.....	7
7.1 SUBSISTENCE LEVEL.....	7
7.2 MONTHLY CHANGE OF THE SUBSISTENCE LEVEL FOR APRIL 2020.....	7
7.3 COMPARISON OF THE SUBSISTENCE LEVEL AND MINIMUM WAGE	7
APPENDICES	
APPENDIX 1: MONTHLY AND YEARLY % CHANGES IN THE CPI FOR APRIL 2020	8
APPENDIX 2: EFFECT ON THE CPI PER SECTOR AND CATEGORY FOR APRIL 2020.....	9
APPENDIX 3: MONTHLY & YEARLY CHANGES (%) AND EFFECT IN THE FOOD & CATERING SERVICES FOR APRIL 2020.....	10
APPENDIX 4: MONTHLY AND YEARLY % CHANGES AND EFFECT IN THE MAIN INDICES FOR APRIL 2020	11
APPENDIX 5: COURSE OF INDICES FOR 2010 – UP TO APRIL 2020.....	12
APPENDIX 6: GLOSSARY	13

A note to the reader

The following report presents the price statistics for April 2020.

- As of February 2017, the expenditure weights are based on the Household Expenditure Survey held by the CBS during the months of May to June of 2016. In order to calculate consistent annual rates of change, the CPI had to be calculated retrospectively for 2 years. Therefore, June of 2019 was chosen as the new base period for the CPI. Subsequently, the CPI figures for 2017, 2018 and 2019 were revised accordingly.
- At the end of April 2020 the Consumer Price Index (CPI) shows a decrease of 0.7% compared to the end of March 2020. The sector which affected the CPI the most was “Transport” (-6.5%), which led to an effect of -0.80 percentage points (ppts) on the Δ CPI of April 2020 (-0.7%).
- Compared to April 2019 the CPI increased by 1.9%. The sector which affected the CPI the most was “Recreation and culture” (20.8%).
- The period average inflation for the period April 2019 - April 2020 is 4.4%, which is 0.3 ppts higher compared to the period average inflation for the period April 2018 - April 2019 (4.1%).
- Utilities (Water and Electricity) did not register price changes in April 2020. The price of gasoline registered a decrease of 18.6% in April 2020 and caused an effect of -0.79 ppts on the Δ CPI of April 2020. The price of diesel registered a decrease of 14.9% in April 2020 and had an effect of -0.05 ppts on the Δ CPI of April 2020.

This report is divided in 7 sections. An overview of the monthly percentage changes in the CPI and index per sector is presented in section 1. Section 2 provides the yearly percentage changes in the CPI and index per sector. The development of indices of main sectors and utilities is outlined in section 3. Section 4 presents the percentage change in the CPI of Aruba’s major trading partners and compares the CPI of Aruba and the USA. Section 5 presents an overview of the monthly and yearly percentage changes of the core inflation. Section 6 presents the price movements in food & catering services. The development of the subsistence level is presented in section 7 and is followed by the appendices.

For other specific information contact us at CBS or visit www.cbs.aw.

Contact information:

Central Bureau of Statistics
L.G. Smith Boulevard 160
Oranjestad - Aruba
Phone: 524-7436
Fax: 583-8057
E-mail: LdSilva@cbs.aw

1 Monthly change of the CPI

1.1 CPI and Inflation

The CPI of the total population of Aruba for the month of April 2020 is 100.69; a decrease of 0.7% compared to the CPI of March 2020 (101.43). An overview of the percentage change in the CPI (Δ CPI) for different periods during 2019 and 2020 is shown in Table 1. The terms percentage change in the CPI and “inflation” (deflation) are considered similar and are used interchangeably. The inflation over the last 12 months (end of period inflation) is 1.9%, while the inflation over a period of 24 months (period average inflation) is 4.4%.

Table 1: Overview of Δ CPI

Period		% Changes		Index	
		2020	2019	Current	Last
Monthly	Mar - Apr	-0.7	0.8	100.69	101.43
Year-to-date	Dec - Apr	-1.0	2.2	100.69	101.66
Last 12 months ¹	Apr - Apr	1.9	4.5	100.69	98.83
Last 24 months ²	Apr - Apr	4.4	4.1	100.59	96.38

Source: Central Bureau of Statistics Aruba

¹ End of period inflation

² Period average inflation

Figure 1 depicts the monthly Δ CPI over a period of one year starting from April 2019, whereas the Δ CPI for the month April for the years 2011 to 2020 is illustrated in Figure 2.

1.2 Changes in sector

Figure 3 provides an overview of the percentage changes for the indices per sector for April 2020. The percentage change in index is further denoted as Δ I. The largest Δ I is observed for the “Transport” sector with a decrease of 6.5%

1.3 Changes in categories and subcategories

The largest positive and negative Δ I is seen in the categories “Health products and services n.e.c.” (8.8%) and “Other major durables for recreation and culture” (-29.8%). In the “Food and non-alcoholic beverages” sector an increase of 0.6% is observed for the category “Food”, while the “Non-alcoholic beverages” shows a decrease of 0.1%. In the “Transport” sector the major Δ I is observed for the category “Operation of personal transport equipment” (-10.3%). In the “Recreation and culture” sector the major Δ I is observed for the category “Other major durables for recreation and culture” (-29.8%)¹.

The categories which influenced the CPI calculation the most are “Operation of personal transport equipment”, “Food” and “Other recreational items and equipment; gardens and pets” which had an effect of respectively, -0.80, 0.09 and 0.06 ppts on the Δ CPI. Reference is made to tables 16 and 17 in Appendices 1 and 2.

Table 16 provides an overview of the indices for the months April 2019, December 2019, March 2020 and April 2020 together with corresponding weights per sector and the monthly, year-to-date (ytd), end of period and period average percentage changes for April 2020. In table 17 an overview of the effect on the monthly, year-to-date (ytd), end of period and period average CPI per sector and category for April 2020 is presented. The course of indices for 2010 – up to April 2020 is illustrated in Appendix 5.

Figure 1: Monthly Δ CPI, 2019 - 2020

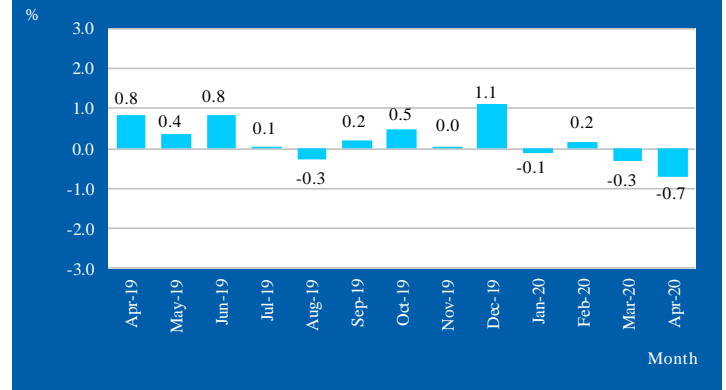


Figure 2: Monthly Δ CPI for April, 2011 - 2020

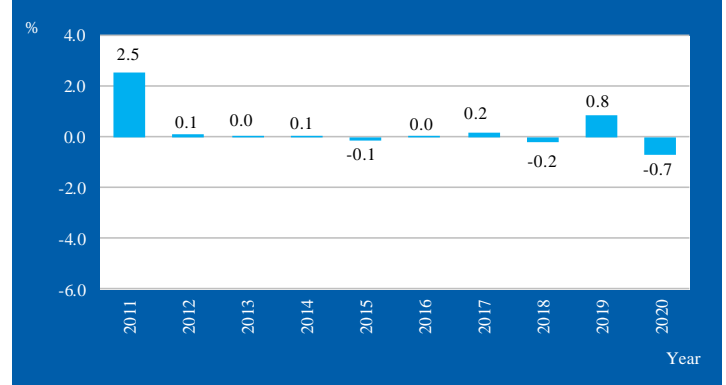
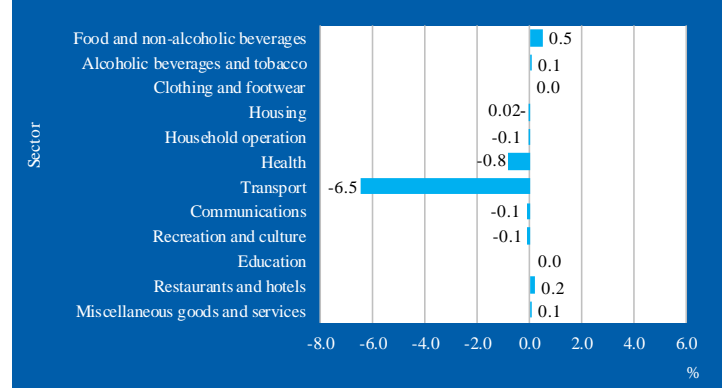


Figure 3: Δ I per sector, April 2020



¹ The focus is on the four major sectors which are: Housing, Transport, Food and non-alcoholic beverages and Recreation and culture. Together these sectors form 59% of the total weight of the basket of goods and services.

2 End of period change of the CPI

2.1 End of period change CPI for April 2020

The CPI increased from 98.83 in April 2019 to 100.69 in April 2020, an increase of 1.9%. This Δ CPI is the highest registered over a period of 5 years for the month April, and is 2.6 ppts lower than the Δ CPI registered in 2019 (4.5%) (see table 2).

Table 2: End of period Δ CPI for April, 2016 - 2020

Period	Δ CPI	Index
2015-2016	-1.6	92.32
2016-2017	-0.4	91.93
2017-2018	2.8	94.54
2018-2019	4.5	98.83
2019-2020	1.9	100.69

Source: Central Bureau of Statistics Aruba

2.2 Changes in sector

An overview of the percentage change per sector over the period April 2019 - April 2020 is presented in table 3. The largest Δ I is observed for the sector "Recreation and culture" with an increase of 20.8%. Furthermore, increases of 4.7%, 4.1% and 3.9% are observed for the "Alcoholic beverages and tobacco", "Food and non-alcoholic beverages" and "Restaurants and hotels" sectors, respectively. A comparison of the Δ I's for the years 2019 and 2020 is provided in figure 4.

Table 3: Percentage change for April, 2019 - 2020

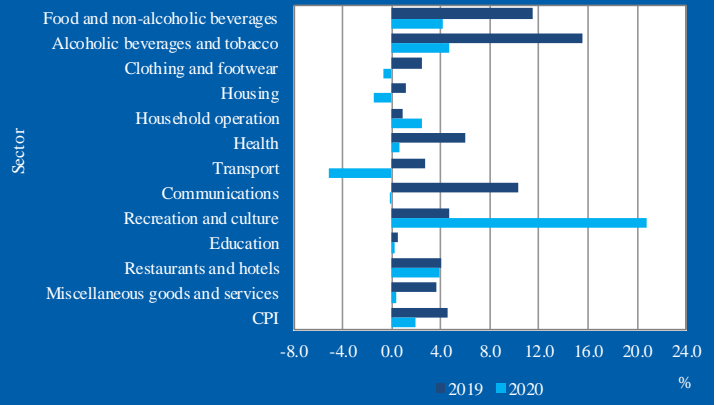
Sector	% Change
Food and non-alcoholic beverages	4.1
Alcoholic beverages and tobacco	4.7
Clothing and footwear	-0.7
Housing	-1.4
Household operation	2.4
Health	0.7
Transport	-5.1
Communications	-0.2
Recreation and culture	20.8
Education	0.2
Restaurants and hotels	3.9
Miscellaneous goods and services	0.3
CPI	1.9

Source: Central Bureau of Statistics Aruba

2.3 Changes in categories

The largest positive and negative Δ I in categories observed over a period of one year are respectively, "Holidays" (76.1%) and "Footwear" (-25.1%). For an overview of the end of period percentage changes per category refer to table 16 in Appendix 1.

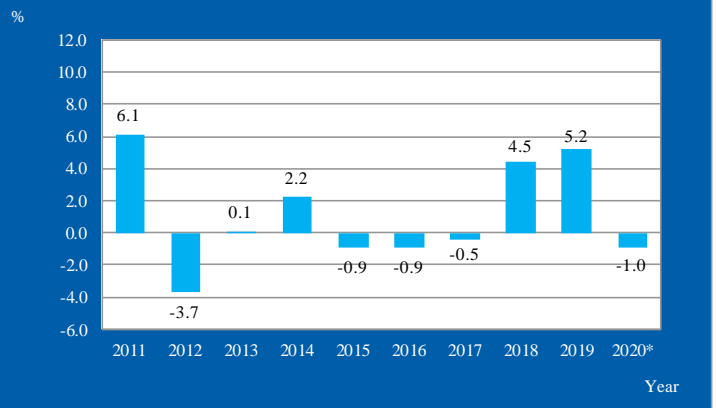
Figure 4: Δ I per sector for April, 2019 - 2020



2.4 End of year change CPI 2011 - 2020

The end of year Δ CPI for the period 2011 - 2020 is shown in figure 5. The Δ CPI for 2020 is calculated by comparing the CPI of April 2020 with the CPI of December 2019. The ytd Δ CPI for April 2020 is -1.0%.

Figure 5: End of year Δ CPI 2011 - 2020



ytd

2.5 Period average change CPI for April 2020

The period average change CPI (Δ ACPI) for April 2020 is 4.4%. Table 4 provides an overview of the Δ ACPI for the month April for the years 2016 to 2020. The Δ ACPI for 2020 decreased by 0.3 ppts compared to 2019 (4.1%).

Table 4: Overview of Δ ACPI for April, 2016 - 2020

Period	Δ ACPI	Index
2015-2016	-0.2	93.37
2016-2017	-0.8	92.65
2017-2018	0.0	92.61
2018-2019	4.1	96.38
2019-2020	4.4	100.59

Source: Central Bureau of Statistics Aruba

3 Development of indices of main sectors and utilities

3.1 Indices main sectors

The four major sectors, “Housing”, “Transport”, “Food and non-alcoholic beverages” and “Recreation and culture”, constitute 64% of the total weight of the basket of goods and services, which are observed on a monthly basis. An overview of the course of indices for 2010 – up to April 2020 per sector and for the CPI is provided in figures 9-1 to 9-12 in Appendix 5.

Changes in the indices of the sectors “Housing” and “Transport” are mainly the result of changes in the international oil prices and prices of utilities during the respective months. The development of crude oil, fuel surcharge, electricity, water, gasoline and diesel prices is provided in table 5 and in the adjoining figures 6-1 and 6-2.

Table 5: Prices of utilities, gasoline and diesel, 2019 - 2020

Month	Crude oil per barrel ¹	Total energy charge ²		Electricity ³	Water ⁴	Gasoline ⁵	Diesel ⁵
		≤ 500 kWh	501-1000 kWh				
Apr-19	63.89	34.52	35.72	265.65	137.05	197.70	181.10
May-19	60.89	34.52	35.72	265.65	137.05	209.50	185.00
Jun-19	54.66	34.52	35.72	265.65	137.05	209.50	183.70
Jul-19	57.28	34.52	35.72	265.65	137.05	208.00	174.20
Aug-19	55.17	34.52	35.72	265.65	137.05	215.10	177.20
Sep-19	57.03	34.52	35.72	265.65	137.05	204.50	172.80
Oct-19	53.77	34.52	35.72	265.65	137.05	205.10	178.40
Nov-19	56.74	34.52	35.72	265.65	137.05	203.30	177.70
Dec-19	59.73	34.52	35.72	265.65	137.05	203.70	175.60
Jan-20	57.92	31.09	31.99	240.09	137.05	204.60	179.20
Feb-20	50.67	31.09	31.99	240.09	137.05	201.90	172.40
Mar-20	30.40	31.09	31.99	240.09	137.05	197.20	160.60
Apr-20	17.39	31.09	31.99	240.09	137.05	160.60	136.70

Source: Central Bureau of Statistics Aruba

¹ Average West Texas Intermediate (WTI) crude oil price per barrel in US\$ (Source: U.S. Energy Information Administration)

² Total energy charge in Afl. cents per kWh

³ Electricity price in Afl.

⁴ Water price in Afl.

⁵ Gasoline and diesel prices in Afl. cents per liter

3.2 Electricity

The price of electricity is determined in Aruban florins (Afl.) for an average usage by households. The average usage is 725.5 kWh per month. The electricity price for an average consumption of 725.5 kWh did not change in April 2020, it remained at Afl. 240.09. Figure 6-1 provides an overview of the course of changes in the electricity price for the period 2013 to 2020.

The total energy charge per kWh for a usage of electricity up to 500 kWh did not change in April 2020, it stayed at Afl. 31.09 cents per kWh. The total energy charge per kWh for a usage of electricity between 501 - 1000 kWh did not change in April 2020, it stayed at Afl. 31.99 cents per kWh.

3.3 Water

The price of water is determined in Afl. for an average usage (water consumption) by households. Figure 6-1 provides an overview of the course of changes in the water price for the period 2013 to 2020. The water price for an average usage by households did not change in April 2020, it remained at Afl. 137.05.

3.4 Gasoline and Diesel

The retail price of gasoline decreased by 18.6% from 197.2 cents per liter in March 2020 to 160.6 cents per liter in April 2020. In April 2020, the retail price of diesel registered a decrease of 14.9% from 160.6 cents per liter in March 2020 to 136.7 cents per liter in April 2020.

Figure 6-1 Electricity price, water price and energy charge in Afl., 2013 - 2020

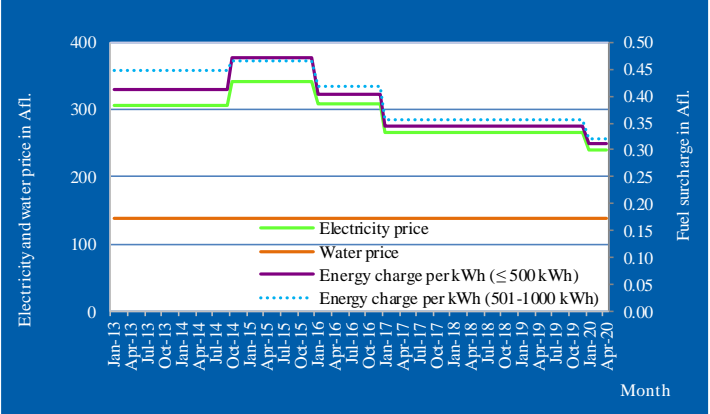
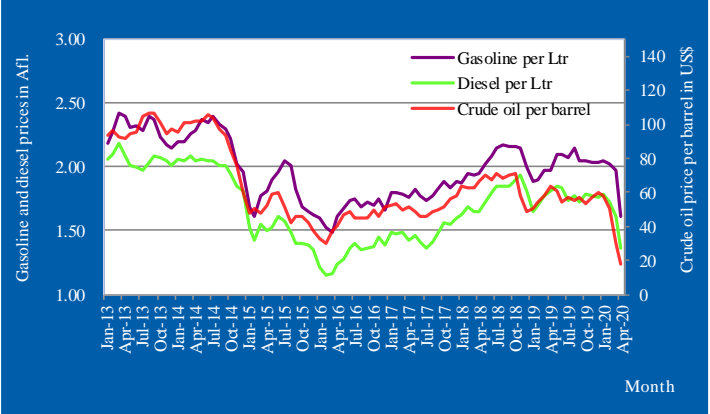


Figure 6-2 Gasoline, diesel and crude oil prices, 2013 - 2020



4 Percentage change CPI of Aruba's major trading partners

4.1 Comparison of the CPI of Aruba and the USA

Table 6 provides an overview of the Δ CPI of Aruba's major trading partners starting from February 2019. In April 2020 the Δ CPI of the USA and the Netherlands were -0.7% and 0.5%. The Δ CPI of Curaçao for April 2020 is not yet available.

Table 6: Monthly Δ CPI 2019 - 2020 per Country

Period	Aruba	USA	Curaçao	Netherlands
Apr-19	0.6	0.5	0.8	0.7
May-19	0.4	0.2	0.9	-0.1
Jun-19	0.8	0.0	0.8	-0.1
Jul-19	0.1	0.2	-0.2	1.0
Aug-19	-0.3	0.0	0.2	0.4
Sep-19	0.2	0.1	-0.6	0.6
Oct-19	0.5	0.2	0.0	0.4
Nov-19	0.0	-0.1	-0.4	0.1
Dec-19	1.1	-0.1	0.1	0.1
Jan-20	-0.1	0.4	0.1	-0.8
Feb-20	0.2	0.3	-0.3	0.6
Mar-20	-0.3	-0.2	n.a.	0.2
Apr-20	-0.7	-0.7	n.a.	0.5

Source: CBS Aruba, Bureau of Labor Statistics (USA), CBS Curaçao and CBS Netherlands

The USA is considered Aruba's largest trading partner². Table 7 provides an overview of the Δ CPI for Aruba and the USA in April 2020. Aruba's monthly Δ CPI for April 2020 is virtually the same as the Δ CPI of the USA.

Table 7: Overview of Δ CPI, 2020

Period	Aruba	USA	
Monthly	Mar - Apr	-0.7	-0.7
Year-to-date	Dec - Apr	-1.0	-0.2
Last 12 months ¹	Apr - Apr	1.9	0.3
Last 24 months ²	Apr - Apr	4.4	1.8

Source: Central Bureau of Statistics Aruba

¹ End of period inflation

² Period average inflation

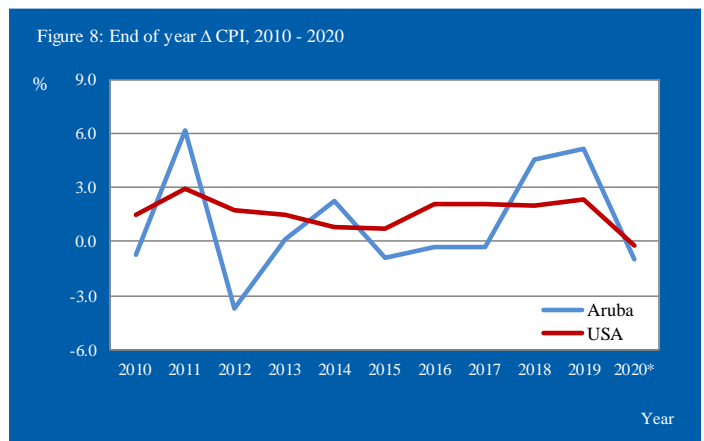
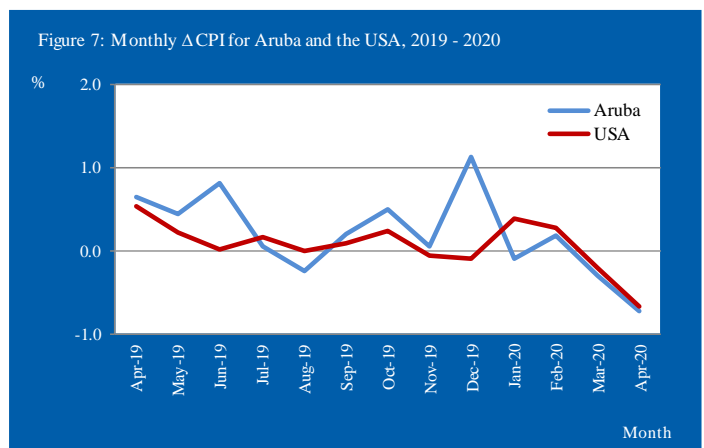
The Δ CPI of Aruba over the last 12 months is 1.6 ppts higher compared to the USA's 12-month Δ CPI. The Δ CPI over the last 24 months for Aruba is 2.6 ppts higher than the Δ CPI of the USA. The monthly inflation for both Aruba and the USA is depicted in figure 7 over a period of one year. Furthermore, an overview of the end of year Δ CPI over the period 2010 - 2020 for Aruba and the USA is provided in table 8 and figure 8.

Table 8: End of year Δ CPI, 2010 - 2020

Period	Aruba	USA
2010	-0.7	1.5
2011	6.1	3.0
2012	-3.7	1.7
2013	0.1	1.5
2014	2.2	0.8
2015	-0.9	0.7
2016	-0.3	2.1
2017	-0.3	2.1
2018	4.6	2.0
2019	5.2	2.3
2020*	-1.0	-0.2

Source: Central Bureau of Statistics Aruba

* ytd



*ytd

² "61% of Aruba's import by sea and air originates from the USA" (Source: Foreign Trade Statistics Report, 4th Quarter 2019).

5 Core inflation

5.1 Core inflation

Core inflation is a measure of inflation which excludes certain items that face volatile price movements e.g. food products and energy. By calculating the core inflation these more volatile components are eliminated from the inflation. Core inflation indices serve to assess the mid- and long-term trend of the overall price level. For the purpose of adjusting monetary policy, many economists focus more intently on the core rate of inflation, as this allows for an in-depth assessment of inflationary processes ongoing in the economy.

5.2 Monthly change of the core inflation

In April 2020 the core inflation (measured over the period April 2019 - 2020) was 4.3%. In April 2020 the food index was 12.1%, while the energy index shows a decrease of 2.1%.

Table 9: Monthly inflation¹ and core inflation, 2019 - 2020

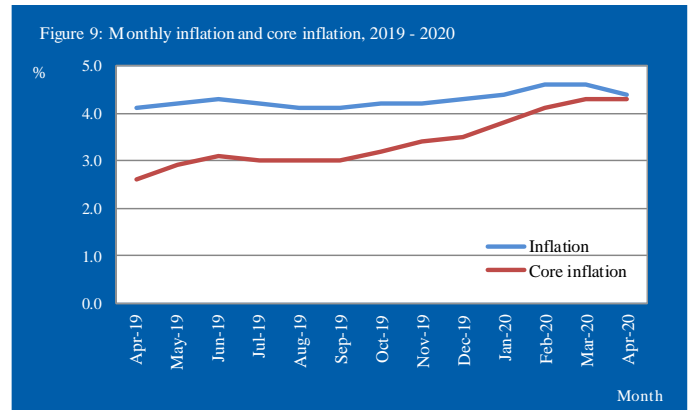
Period	Inflation	Food	Energy ²	Core Inflation
Apr-19	4.1	12.6	3.1	2.6
May-19	4.2	12.4	2.9	2.9
Jun-19	4.3	12.4	2.5	3.1
Jul-19	4.2	12.5	1.9	3.0
Aug-19	4.1	12.8	1.4	3.0
Sep-19	4.1	13.1	0.8	3.0
Oct-19	4.2	13.5	0.3	3.2
Nov-19	4.2	13.5	-0.2	3.4
Dec-19	4.3	13.2	-0.3	3.5
Jan-20	4.4	13.0	-0.5	3.8
Feb-20	4.6	13.3	-0.7	4.1
Mar-20	4.6	12.7	-1.2	4.3
Apr-20	4.4	12.1	-2.1	4.3

Source: Central Bureau of Statistics Aruba

¹ Period average inflation

² Energy : Electricity, water, gasoline and diesel

The monthly inflation and core inflation for Aruba is shown in figure 9 over a period of one year starting from April 2019.



5.3 End of year change of the core inflation, 2015 - 2020

The end of year core inflation of the total population of Aruba for the year 2020 (up to April) is 4.3%, an increase of 0.8 ppts compared to the core inflation of 2019. Table 10 provides an overview of the end of year inflation and core inflation over the period 2015 - 2020.

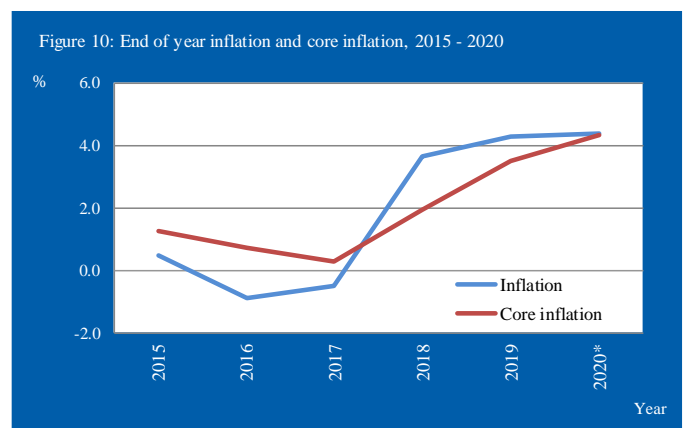
The end of year inflation and core inflation is presented in figure 10 over the period 2015 - 2020.

Table 10: End of year core inflation, 2015 - 2020

Period	2015	2016	2017	2018	2019	2020*
Inflation	0.5	-0.9	-0.5	3.6	4.3	4.4
Food	1.9	-0.1	0.8	12.2	13.2	12.1
Electricity	8.5	-9.9	-14.0	0.0	0.0	-3.2
Water	0.0	0.0	0.0	0.0	0.0	0.0
Gasoline and diesel	-20.1	-7.9	9.2	13.9	-1.1	-1.8
Core inflation	1.3	0.7	0.3	1.9	3.5	4.3

Source: Central Bureau of Statistics Aruba

Note: the figures for the years 2014-2017 are based on the weights of Dec 2006=100
*current month



Note: the figures for the years 2014-2017 are based on the weights of Dec 2006=100

6 Development of Food & catering services

6.1 Monthly change of Food & catering services for April 2020

The “Food & catering services” index showed an increase of 0.4% in April 2020, after a decrease of 0.5% in March 2020. The index for “Food at home” showed an increase of 0.5% in April, as eight (8) of the eleven (11) “Food at home” indices increased in April 2020. The “Milk, cheese and eggs” index registered the largest increase (3.6%) in April 2020. Furthermore, increases were posted in the indices for “Sugar, jam, honey and other confectionery” (1.5%), “Oils and fats” (1.4%) and “Fruit” (1.2%).

The “Potatoes and other tubers” index registered the largest decrease (-12.1%) in April 2020.

Table 11 provides an overview of the corresponding weights per food group together with the percentage changes and effect for April 2020.

Table 11: Percentage change of Food for April 2020

Food	Weight	% Change	Effect
Food & catering services	1,492.8	0.4	0.099
<i>Food at home</i>	1,125.3	0.5	0.088
Bread and cereals	205.2	-2.3	-0.050
Meat	229.8	0.8	0.023
Fish and other seafood	56.4	0.0	0.000
Milk, cheese and eggs	140.0	3.6	0.063
Oils and fats	31.6	1.4	0.007
Fruit	72.0	1.2	0.054
Potatoes and other tubers	18.5	-12.1	-0.032
Vegetables	75.7	1.0	0.015
Sugar, jam, honey and other confectionery	49.6	1.5	0.006
Food products n.e.c.	82.7	0.3	0.003
Non-alcoholic beverages	163.9	-0.1	-0.001
<i>Food away from home</i>	367.5	0.2	0.011
Other goods and services	8,507.2	-1.1	-0.825
Other goods	5,147.2	-2.1	-0.874
Other services	3,360.0	0.1	0.049
CPI	10,000.0	-0.7	-0.726

Source: Central Bureau of Statistics Aruba

In April 2020, “Food at home” and “Food away from home” as a group showed an increase in price of 0.4% compared to March 2020, and had an influence of 0.10 ppts on the CPI, while the remaining goods and services, as a group, experienced a decrease in price of 1.1%, causing an effect of -0.82 ppts on the CPI.

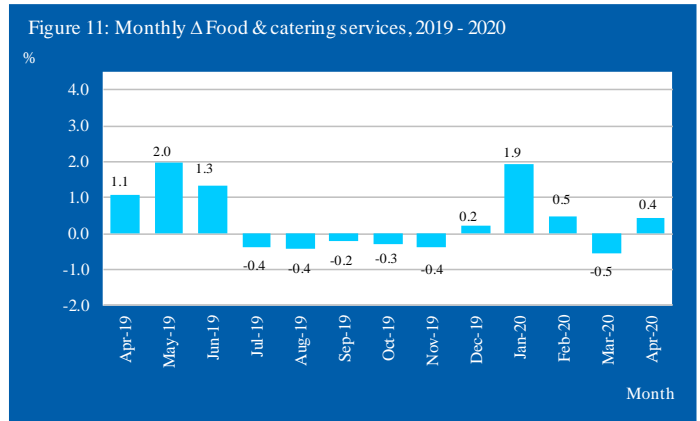
An overview of the percentage change and effect for “Food at home” and “Food away from home” for April 2020 is presented in table 12.

Table 12: Effect on the CPI of April 2020 of “Food at home” and “Food away from home”

Category	Weight	% Change	Effect
Food at home	1,087.7	0.5	0.09
Food away from home	429.8	0.2	0.01
Total group	1,517.5	0.4	0.10
Remaining goods and services	8,482.5	-1.1	-0.82
CPI	10,000.0	-0.7	-0.73

Source: Central Bureau of Statistics Aruba

Figure 11 depicts the monthly Δ Food and catering services over a period of one year starting from April 2019.



6.2 End of Period change of Food & catering services for April 2020

Over the last twelve (12) months, the “Food & catering services” has increased by 4.1%. The “Food at home” index showed an increase of 4.1%. The “Fruit” index increased by 8.1%, the largest increase among the “Food at home” food groups, while the “Potatoes and other tubers” index decreased by 11.4%, the largest decrease among the “Food at home” food groups. The index for “Food away from home” shows an increase of 0.2% in April 2020 and has increased by 4.0% over the last twelve (12) months.

Table 18 provides an overview of the monthly and end of period percentage changes and effect for April 2020 for the food groups.

7 Subsistence level

7.1 Subsistence level

The subsistence level is the minimum level of income which is perceived necessary to achieve an adequate standard of living in a given country. The subsistence level is usually determined by estimating the cost of all the essential resources that an average adult consumes in one month or year. This is commonly called a basic needs index, and varies according to the price of food, clothing, housing, transport and other items in the "basket". Equivalence scales are used to adjust for the assumed standard of living, of households of different sizes and composition. The scale assigns a weight of 1.0 for the first adult and 0.5 for each additional adult in the household (aged 15+) and a weight of 0.3 for each child (aged 0-14 years). The subsistence level is based on figures of the report "Bestaansminimum 2010" published by the CBS in December 2010 and is monthly updated for inflation using the monthly CPI. The reference unit used in this report is one of a household consisting of two adults and two children (aged 0-14 years).

7.2 Monthly change of the subsistence level for April 2020

Table 13 provides an overview of the subsistence level for a family of two adults and two children (aged 0-14 years) by sector registered over a period of 5 years for the month April. Over a period of one year the subsistence level increased by Afl. 93, from Afl. 4,909 in April 2019 to Afl. 5,002 in April 2020. The "Food and non-alcoholic beverages" sector shows the largest increase (Afl. 87), over this period.

Table 13: Monthly subsistence level in Aruba (in Afl.) by sector for a family of 2 adults and 2 childr (aged 0-14 years) for April, 2016 - 2020

Sector	Apr-16	Apr-17	Apr-18	Apr-19	Apr-20	Change in Afl.	
						Apr-19	Apr-20
Food and non-alcoholic beverages	1,566	1,689	1,899	2,117	2,204	87	
Clothing and footwear	245	254	254	260	258	-2	
Housing	1,401	1,338	1,337	1,352	1,333	-19	
Household operation	130	127	128	129	133	4	
Health	70	71	74	78	79	1	
Transport	235	246	260	268	254	-14	
Communications	128	124	127	140	139	-1	
Recreation and culture	176	164	161	169	204	35	
Education	64	71	74	75	75	0	
Miscellaneous goods and services	306	311	310	322	323	1	
Total	4,320	4,395	4,625	4,909	5,002	93	

Source: Central Bureau of Statistics Aruba

An overview of the subsistence level, for the most common family types, over the period April 2019 - April 2020 is presented in table 14.

Table 14: Subsistence level in Aruba (in Afl.) by family size and composition, April 2020 (Base period April 2010)

Period	Equivalence scales				
	1	1.3	1.5	1.8	2.1
	1 adult	1 adult + 1 child	2 adults	2 adults + 1 child	2 adults + 2 children
Apr-19	2,338	3,039	3,507	4,208	4,909
May-19	2,361	3,069	3,541	4,249	4,957
Jun-19	2,384	3,099	3,575	4,290	5,005
Jul-19	2,379	3,093	3,569	4,283	4,997
Aug-19	2,372	3,084	3,558	4,270	4,981
Sep-19	2,377	3,090	3,566	4,279	4,992
Oct-19	2,382	3,096	3,573	4,287	5,002
Nov-19	2,375	3,087	3,562	4,274	4,987
Dec-19	2,387	3,103	3,581	4,297	5,013
Jan-20	2,393	3,111	3,590	4,308	5,026
Feb-20	2,395	3,114	3,593	4,311	5,030
Mar-20	2,385	3,101	3,578	4,293	5,009
Apr-20	2,382	3,096	3,573	4,287	5,002

Source: Central Bureau of Statistics Aruba

7.3 Comparison of the subsistence level and minimum wage

In April 2020 the subsistence level for a single adult household is Afl. 2,382, which represents an income deficit of Afl. 567, a decrease of Afl. 60 compared to the deficit observed one year ago (Afl. 627). This deficit is the second highest registered over a period of five years for the month April.

Table 15: Monthly income surplus/deficit (in Afl.) for a single adult household for April, 2016 - 2020

Period	Minimum		Surplus/deficit
	1 adult	wage	
2016	2,057	1,678	-379
2017	2,093	1,678	-415
2018	2,202	1,711	-491
2019	2,338	1,711	-627
2020	2,382	1,815	-567

Source: Central Bureau of Statistics Aruba

Table 16: Monthly & Yearly Changes (%) in the Consumer Price Index for April 2020, Total Population (Jun 2019 = 100)

DESCRIPTION	WEIGHT coefficient	2019 Apr	2019 Dec	2020 Mar	2020 Apr	Monthly Mar - Apr	Ytd Dec - Apr	End of period Apr 19 - Apr 20	Period average Apr 19 - Apr 20
Food and non-alcoholic beverages	1,087.7	156.48	158.32	162.10	162.92	0.5	2.9	4.1	11.7
Food	964.1	160.88	162.32	166.57	167.51	0.6	3.2	4.1	12.1
Non-alcoholic beverages	123.6	122.08	127.08	127.25	127.14	-0.1	0.0	4.1	7.8
Alcoholic beverages and tobacco	78.2	128.43	133.04	134.31	134.40	0.1	1.0	4.7	12.7
Alcoholic beverages for consumption at home	62.2	110.66	114.88	114.35	114.46	0.1	-0.4	3.4	15.6
Tobacco	16.0	197.49	203.61	211.88	211.88	0.0	4.1	7.3	7.1
Clothing and footwear	276.8	75.50	83.63	74.97	74.97	0.0	-10.4	-0.7	4.6
Clothing	212.8	78.54	89.29	82.79	82.79	0.0	-7.3	5.4	7.4
Footwear	64.0	65.39	64.80	48.95	48.95	0.0	-24.5	-25.1	-6.8
Housing	2,522.2	102.36	103.19	100.92	100.90	0.0	-2.2	-1.4	0.5
Actual rentals for housing	666.7	126.13	127.28	127.76	127.92	0.1	0.5	1.4	1.5
Imputed rentals for housing	34.4	104.82	105.29	105.29	105.29	0.0	0.0	0.4	0.9
Maintenance and repair of the dwelling	517.0	87.93	87.75	90.64	90.34	-0.3	2.9	2.7	4.1
Water supply and miscellaneous services relating to the dwelling	463.6	95.30	98.34	98.34	98.34	0.0	0.0	3.2	1.3
Electricity, gas and other fuels	840.4	96.16	96.16	87.19	87.19	0.0	-9.3	-9.3	-3.1
Household operation	929.2	75.58	76.96	77.47	77.43	-0.1	0.6	2.4	1.3
Furniture, furnishings, carpets and other floor coverings	128.8	46.13	37.81	34.85	34.85	0.0	-7.8	-24.5	-10.7
Household textiles	58.6	64.40	56.79	53.40	50.04	-6.3	-11.9	-22.3	-10.5
Household appliances	246.0	49.02	59.20	60.10	59.20	-1.5	0.0	20.8	7.3
Glassware, tableware and household utensils	17.2	64.41	63.13	63.86	60.61	-5.1	-4.0	-5.9	5.3
Tools and equipment for house and garden	58.2	49.10	48.86	48.36	51.47	6.4	5.3	4.8	-2.9
Goods and services for routine household maintenance and cleaning	420.5	105.83	106.60	108.62	109.22	0.6	2.5	3.2	2.3
Health	223.1	85.55	83.93	86.85	86.12	-0.8	2.6	0.7	0.5
Medical products, appliances and equipment	152.3	89.49	87.78	91.26	90.02	-1.4	2.6	0.6	0.4
Out-patient services	52.4	77.72	77.72	80.51	80.01	-0.6	2.9	2.9	2.8
Other treatments	7.8	75.22	76.36	79.10	78.61	-0.6	2.9	4.5	1.9
Health products and services n.e.c.	10.5	75.22	64.78	60.37	65.72	8.8	1.4	-12.6	-10.5
Transport	1,257.4	98.29	101.85	99.68	93.25	-6.5	-8.4	-5.1	1.3
Purchase of vehicles	442.6	90.24	95.69	95.48	95.48	0.0	-0.2	5.8	2.6
Operation of personal transport equipment	763.3	103.13	105.21	102.74	92.15	-10.3	-12.4	-10.6	-0.2
Transport services	51.5	95.68	105.11	90.34	90.34	0.0	-14.0	-5.6	18.1
Communications	849.6	77.96	77.90	77.87	77.79	-0.1	-0.1	-0.2	4.8
Telephone and telefax equipment	43.8	17.47	16.36	15.76	14.16	-10.1	-13.4	-18.9	-17.0
Telephone and telefax services	805.8	81.25	81.25	81.25	81.25	0.0	0.0	0.0	5.1
Recreation and culture	1,013.3	81.82	95.35	98.91	98.83	-0.1	3.7	20.8	12.5
Audio-visual, photographic and information processing equipment	58.5	55.65	72.13	52.71	46.86	-11.1	-35.0	-15.8	-9.7
Other major durables for recreation and culture	20.0	33.42	38.43	38.25	26.85	-29.8	-30.1	-19.7	-0.3
Other recreational items and equipment; gardens and pets	266.6	113.84	120.07	122.40	124.72	1.9	3.9	9.6	6.0
Recreational and cultural services	309.1	89.04	88.54	94.35	94.42	0.1	6.6	6.0	2.3
Newspapers, books and stationery	43.7	76.39	75.57	76.24	71.65	-6.0	-5.2	-6.2	4.1
Holidays	315.4	56.37	91.78	99.11	99.25	0.2	8.1	76.1	51.2
Education	98.0	109.30	109.30	109.49	109.49	0.0	0.2	0.2	0.1
Pre primary and primary education	24.0	86.66	86.66	86.66	86.66	0.0	0.0	0.0	0.0
Secondary education	43.4	94.62	94.62	94.62	94.62	0.0	0.0	0.0	0.2
Post-secondary non-tertiary education	4.6	102.85	102.85	102.85	102.85	0.0	0.0	0.0	0.0
Tertiary education	23.6	160.49	160.49	160.49	160.49	0.0	0.0	0.0	0.0
Education not definable by level	2.5	109.74	109.74	117.06	117.06	0.0	6.7	6.7	2.4
Restaurants and hotels	442.0	114.99	119.96	119.23	119.48	0.2	-0.4	3.9	3.8
Catering services	429.8	116.00	120.31	120.34	120.59	0.2	0.2	4.0	3.8
Accommodation services	12.2	79.38	107.74	79.98	80.14	0.2	-25.6	1.0	3.8
Miscellaneous goods and services	1,222.6	86.24	86.51	86.43	86.53	0.1	0.0	0.3	2.7
Personal care	427.1	100.65	101.09	101.31	101.19	-0.1	0.1	0.5	2.8
Personal effects n.e.c.	106.6	106.08	107.40	105.00	106.62	1.5	-0.7	0.5	16.7
Social protection	78.2	115.39	115.39	115.39	115.39	0.0	0.0	0.0	0.0
Insurance	610.7	68.97	68.97	69.06	69.06	0.0	0.1	0.1	0.0
CPI	10,000.0	98.83	101.66	101.43	100.69	-0.7	-1.0	1.9	4.4

Source: Central Bureau of Statistics Aruba

Table 17: Monthly & Yearly Effect on the Consumer Price Index per sector and category for April 2020 (Jun 2019 = 100)

DESCRIPTION	WEIGHT coefficient	Monthly Mar - Apr	Ytd Dec - Apr	End of period Apr 19 - Apr 20	Period average Apr 19 - Apr 20
Food and non-alcoholic beverages	1,087.7	0.09	0.49	0.71	1.90
Food	964.1	0.09	0.49	0.65	1.78
Non-alcoholic beverages	123.6	0.00	0.00	0.06	0.12
Alcoholic beverages and tobacco	78.2	0.00	0.01	0.05	0.12
Alcoholic beverages for consumption at home	62.2	0.001	0.00	0.02	0.10
Tobacco	16.0	0.000	0.01	0.02	0.02
Clothing and footwear	276.8	0.00	-0.24	-0.01	0.10
Clothing	212.8	0.00	-0.14	0.09	0.13
Footwear	64.0	0.00	-0.10	-0.11	-0.03
Housing	2,522.2	-0.01	-0.57	-0.37	0.13
Actual rentals for housing	666.7	0.01	0.04	0.12	0.13
Imputed rentals for housing	34.4	0.00	0.00	0.00	0.00
Maintenance and repair of the dwelling	517.0	-0.02	0.13	0.13	0.19
Water supply and miscellaneous services relating to the dwelling	463.6	0.00	0.00	0.14	0.06
Electricity, gas and other fuels	840.4	0.00	-0.74	-0.76	-0.26
Household operation	929.2	0.00	0.04	0.17	0.09
Furniture, furnishings, carpets and other floor coverings	128.8	0.00	-0.04	-0.15	-0.06
Household textiles	58.6	-0.02	-0.04	-0.09	-0.04
Household appliances	246.0	-0.02	0.00	0.25	0.10
Glassware, tableware and household utensils	17.2	-0.01	0.00	-0.01	0.01
Tools and equipment for house and garden	58.2	0.02	0.01	0.01	-0.01
Goods and services for routine household maintenance and cleaning	420.5	0.02	0.11	0.14	0.10
Health	223.1	-0.02	0.05	0.01	0.01
Medical products, appliances and equipment	152.3	-0.02	0.03	0.01	0.01
Out-patient services	52.4	0.00	0.01	0.01	0.01
Other treatments	7.8	0.00	0.00	0.00	0.00
Health products and services n.e.c.	10.5	0.01	0.00	-0.01	-0.01
Transport	1,257.4	-0.80	-1.06	-0.64	0.17
Purchase of vehicles	442.6	0.00	-0.01	0.23	0.11
Operation of personal transport equipment	763.3	-0.80	-0.98	-0.85	-0.02
Transport services	51.5	0.00	-0.07	-0.03	0.07
Communications	849.6	-0.01	-0.01	-0.01	0.32
Telephone and telefax equipment	43.8	-0.01	-0.01	-0.01	-0.02
Telephone and telefax services	805.8	0.00	0.00	0.00	0.33
Recreation and culture	1,013.3	-0.01	0.35	1.74	1.05
Audio-visual, photographic and information processing equipment	58.5	-0.03	-0.15	-0.05	-0.04
Other major durables for recreation and culture	20.0	-0.02	-0.02	-0.01	0.00
Other recreational items and equipment; gardens and pets	266.6	0.06	0.12	0.29	0.19
Recreational and cultural services	309.1	0.00	0.18	0.17	0.06
Newspapers, books and stationery	43.7	-0.02	-0.02	-0.02	0.01
Holidays	315.4	0.00	0.23	1.37	0.82
Education	98.0	0.00	0.00	0.00	0.00
Pre primary and primary education	24.0	0.00	0.00	0.00	0.00
Secondary education	43.4	0.00	0.00	0.00	0.00
Post-secondary non-tertiary education	4.6	0.00	0.00	0.00	0.00
Tertiary education	23.6	0.00	0.00	0.00	0.00
Education not definable by level	2.5	0.00	0.00	0.00	0.00
Restaurants and hotels	442.0	0.01	-0.02	0.20	0.20
Catering services	429.8	0.01	0.01	0.20	0.19
Accommodation services	12.2	0.00	-0.03	0.00	0.00
Miscellaneous goods and services	1,222.6	0.01	0.00	0.04	0.29
Personal care	427.1	0.00	0.00	0.02	0.12
Personal effects n.e.c.	106.6	0.02	-0.01	0.01	0.17
Social protection	78.2	0.00	0.00	0.00	0.00
Insurance	610.7	0.00	0.01	0.01	0.00
CPI	10,000.0	-0.73	-0.95	1.88	4.37

Source: Central Bureau of Statistics Aruba

Table 18: Monthly & Yearly Changes (%) and effect in the Food & catering services for April 2020, Total Population (Jun 2019)

DESCRIPTION	WEIGHT coefficient	% Change		Effect	
		Monthly Mar - Apr	End of period Apr 19 - Apr 20	Monthly Mar - Apr	End of period Apr 19 - Apr 20
Food & catering services	1,517.5	0.4	4.1	0.099	0.909
Food at home	1,087.7	0.5	4.1	0.088	0.710
Bread and cereals	178.1	-2.3	0.5	-0.050	0.011
Rice	23.5	-0.8	1.5	-0.003	0.005
Bread	72.1	-5.2	1.3	-0.052	0.012
Pasta products	9.2	1.3	5.3	0.001	0.005
Other cereals and cereal products	73.3	0.4	-1.4	0.003	-0.011
Meat	242.5	0.8	3.4	0.023	0.102
Bovine	67.3	1.9	3.4	0.015	0.028
Swine	25.5	-0.7	4.5	-0.002	0.014
Poultry	75.7	0.1	0.6	0.001	0.006
Other meat and meat preparations	74.0	1.0	6.0	0.009	0.054
Fish and other seafood	49.0	0.0	6.6	0.000	0.036
Fish and seafood preparations	49.0	0.0	6.6	0.000	0.036
Milk, cheese and eggs	135.3	3.6	7.6	0.063	0.130
Cheese	55.4	-0.5	5.3	-0.004	0.041
Eggs	16.6	34.5	44.3	0.058	0.072
Milk	40.0	1.0	2.0	0.005	0.011
Other milk products	23.3	1.5	3.0	0.003	0.006
Oils and fats	32.2	1.4	6.4	0.007	0.030
Corn oil	2.8	2.2	2.0	0.001	0.001
Butter and margarine	9.2	0.9	7.5	0.001	0.012
Other oils and fats	20.1	1.6	6.5	0.005	0.018
Fruit	97.6	1.2	8.1	0.054	0.363
Oranges	9.4	8.2	14.6	0.010	0.017
Bananas and plantains	19.9	5.0	5.2	0.022	0.023
Apples	9.3	-0.2	-5.0	0.000	-0.009
Avocado	5.0	1.2	-7.3	0.010	-0.071
Grapes	9.2	-4.6	-3.6	-0.009	-0.007
Nuts	11.9	0.9	7.0	0.001	0.007
Lemons and mandarins	6.0	10.6	-12.0	0.007	-0.010
Cherries and strawberries	8.8	6.9	21.4	0.072	0.200
Melons and watermelons	7.7	-5.7	14.0	-0.049	0.102
Papayas and pineapples	6.9	-2.3	2.5	-0.014	0.015
Other fruits and fruit products	3.5	2.1	65.7	0.005	0.096
Potatoes and other tubers	18.2	-12.1	-11.4	-0.032	-0.030
Potatoes	12.2	-15.5	-16.5	-0.032	-0.036
Other tubers	2.0	1.9	8.8	0.000	0.002
Sweet potatoes and yucca	4.0	0.8	12.8	0.000	0.004
Vegetables	89.1	1.0	-4.4	0.015	-0.073
Lettuce	6.8	-2.9	-13.6	-0.002	-0.009
Tomatoes	9.7	-10.5	11.0	-0.017	0.015
Onions and garlic	18.7	3.8	-7.9	0.020	-0.049
Celery and broccoli	15.3	2.6	-17.4	0.007	-0.063
Other vegetables	15.3	4.1	14.8	0.009	0.029
Other preserved or processed vegetables	8.4		6.2	-0.002	-0.003
Frozen vegetable mixtures	14.8	-0.6	3.3	-0.001	0.006
Sugar, jam, honey and other confectionery	42.0	1.5	4.7	0.006	0.019
Sugar	12.1	1.3	4.9	0.001	0.005
Jams and jellies	2.5	4.7	10.8	0.001	0.003
Other confectionery products	27.5	1.2	4.0	0.003	0.011
Food products n.e.c.	80.1	0.3	6.4	0.003	0.058
Other food products	80.1	0.3	6.4	0.003	0.058
Non-alcoholic beverages	123.6	-0.1	4.1	-0.001	0.063
Coffee and tea	20.9	1.9	0.4	0.004	0.001
Other non-alcoholic beverages	14.6	0.9	4.1	0.002	0.008
Soft and sports drinks	31.0	-0.5	4.7	-0.002	0.018
Fruit juices	57.1	-0.6	4.9	-0.005	0.037
Food away from home	429.8	0.2	4.0	0.011	0.200
Food and beverage consumption away from home	429.8	0.2	4.0	0.011	0.200
Other goods and services	8,482.5	-1.1	1.2	-0.825	0.972
Other goods	4,735.8	-2.1	-2.1	-0.874	-0.881
Other services	3,746.7	0.1	5.3	0.049	1.852
CPI	10,000	-0.7	1.9	-0.726	1.881

Source: Central Bureau of Statistics Aruba

Table 19: CPI: Main indices for April 2020, Total Population (Jun 2019 = 100)

DESCRIPTION	WEIGHT coefficient	2019 Apr	2019 Dec	2020 Mar	2020 Apr	Monthly Mar - Apr	Ytd Dec - Apr	End of period Apr 19 - Apr 20	Period average Apr 19 - Apr 20
CPI for "All items"	10,000.0	98.83	101.66	101.43	100.69	-0.7	-1.0	1.9	4.4
CPI for "Goods"	6,272.5	101.42	103.52	102.50	101.13	-1.3	-2.3	-0.3	4.6
CPI for "Durable goods"	1,293.2	73.26	76.20	75.04	74.42	-0.8	-2.3	1.6	3.3
CPI for "Semi-durable goods"	954.1	75.31	79.95	76.32	76.24	-0.1	-4.6	1.2	3.4
CPI for "Non-durable goods"	4,025.2	115.05	116.46	115.91	114.08	-1.6	-2.0	-0.8	5.0
CPI for "Services"	3,727.5	95.22	99.07	99.93	100.08	0.1	1.0	5.1	4.1
CPI for "Gasoline" and "Diesel"	552.3	101.96	104.55	100.78	82.35	-18.3	-21.2	-19.2	-1.8
CPI for "Food at home"	961.4	160.88	162.32	166.57	167.51	0.6	3.2	4.1	12.1
CPI excluding "Food and non-alcoholic beverages"	8,874.7	91.80	94.75	94.02	93.10	-1.0	-1.7	1.4	3.0
CPI excluding "Gasoline" and "Diesel"	9,447.7	98.68	101.52	101.46	101.58	0.1	0.1	2.9	4.7
CPI excluding "Food and non-alcoholic beverages", "Gasoline" and "Diesel"	8,322.4	91.24	94.21	93.65	93.68	0.0	-0.6	2.7	3.3
CPI excluding "Rentals actually paid by tenants or subtenants"	9,145.8	96.88	99.83	99.55	98.75	-0.8	-1.1	1.9	4.6
CPI excluding "Housing"	7,446.7	97.64	101.15	101.60	100.62	-1.0	-0.5	3.1	5.8
CPI excluding "Gasoline", "Diesel", "Water" and "Electricity"	8,289.2	98.98	102.22	103.05	103.19	0.1	0.9	4.2	5.7

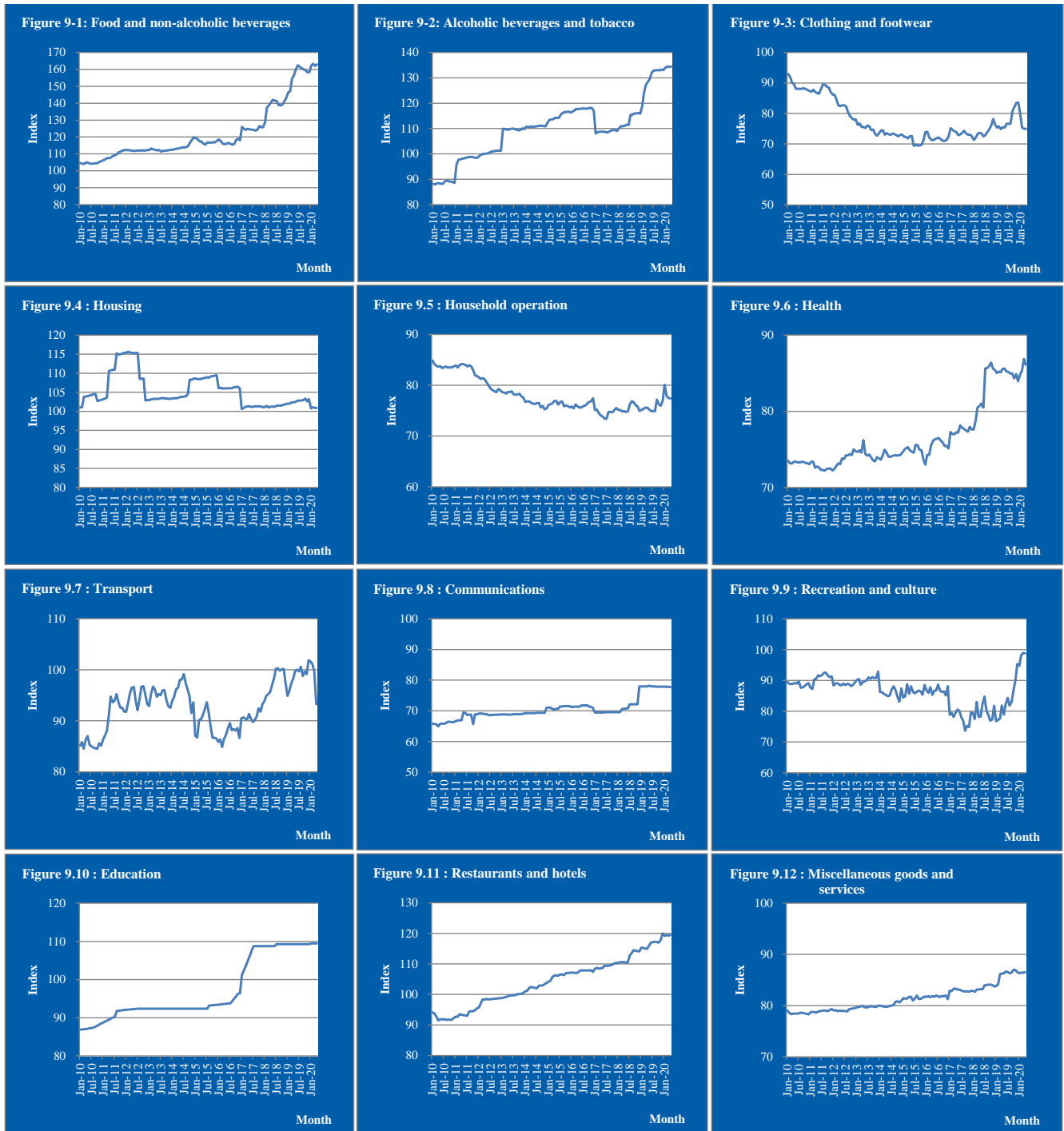
Source: Central Bureau of Statistics Aruba

APPENDIX 5
Table 20: CPI: Effect on main indices for April 2020, Total Population (Jun 2019 = 100)

DESCRIPTION	WEIGHT coefficient	Monthly Mar - Apr	Ytd Dec - Apr	End of period Apr 19 - Apr 20	Period average Apr 19 - Apr 20
CPI for "All items"	10,000.0	-0.73	-0.95	1.88	4.37
CPI for "Goods"	6,272.5	-0.79	-1.37	-0.17	2.72
CPI for "Durable goods"	1,293.2	-0.08	-0.23	0.15	0.32
CPI for "Semi-durable goods"	954.1	-0.01	-0.23	0.06	0.16
CPI for "Non-durable goods"	4,025.2	-0.70	-0.91	-0.38	2.24
CPI for "Services"	3,727.5	0.06	0.41	2.05	1.65
CPI for "Gasoline" and "Diesel"	552.3	-0.84	-1.01	-0.91	-0.09
CPI for "Food at home"	961.4	0.09	0.49	0.65	1.78
CPI excluding "Food and non-alcoholic beverages"	8,874.7	-0.81	-1.45	1.17	2.48
CPI excluding "Gasoline" and "Diesel"	9,447.7	0.11	0.05	2.79	4.46
CPI excluding "Food and non-alcoholic beverages", "Gasoline" and "Diesel"	8,322.4	0.02	-0.44	2.09	2.57
CPI excluding "Rentals actually paid by tenants or subtenants"	9,145.8	-0.74	-1.00	1.76	4.24
CPI excluding "Housing"	7,446.7	-0.72	-0.39	2.25	4.24
CPI excluding "Gasoline", "Diesel", "Water" and "Electricity"	8,289.2	0.11	0.79	3.56	4.73

Source: Central Bureau of Statistics Aruba

Course of Indices for 2010 up to April 2020



Glossary

The Consumer Price Index and Inflation

The Consumer Price Index (CPI) measures changes in prices of consumer goods and services by households. Consumer price indices can be intended to measure either the rate of price inflation or deflation as perceived by households or changes in their cost of living. In case of inflation, the percentage change is positive and it indicates a decrease in the purchasing power of the consumers.

Monthly percentage change

Percentage change in price indices of any aggregates of the CPI in relation to the respective price indices of the previous month.

Year-to-date (ytd)

Percentage change in price indices of any aggregates of the CPI in relation to the respective price indices of December prior to the year under review.

End of period inflation (last 12 months)

Percentage change in price indices of any aggregates of the CPI in relation to the respective price indices of the same month of the previous year.

Period average inflation (last 24 months)

The period average inflation is calculated by comparing the annual average CPI of the concerning period with the annual average CPI of the concerning period of the previous year.

Effect

Contribution of all percentage changes (of all respective aggregates) to the CPI.

Core inflation

Core inflation is a measure of inflation that excludes certain items, which face volatile price movements. Core inflation eliminates the inflation of certain products that can have temporary price shocks because these shocks can diverge from the overall trend of inflation and give a false measure of inflation. The core rate of inflation is calculated by: total inflation excluding food and energy prices. In part, that is because the core is less volatile and reflects better the relationship of supply and demand in domestic product markets. The core usually is a better measure of the basic rate of inflation that will tend to emerge in the absence of supply shocks.

Food & catering services

The “Food & catering services” index is composed of the indices for the “Food & Non-alcoholic beverages” sector (“Food at home”) and the “Catering services” (“Food away from home”) category.

Subsistence level

The subsistence level is the minimum level of income, which is perceived necessary to achieve an adequate standard of living in a given country. The subsistence level is usually determined by estimating the cost of all the essential resources that an average adult consumes in one month or year. This is commonly called a basic needs index, and varies according to the price of food, clothing, housing, transport and other items in the “basket”. The subsistence level is monthly updated for inflation using the monthly CPI.