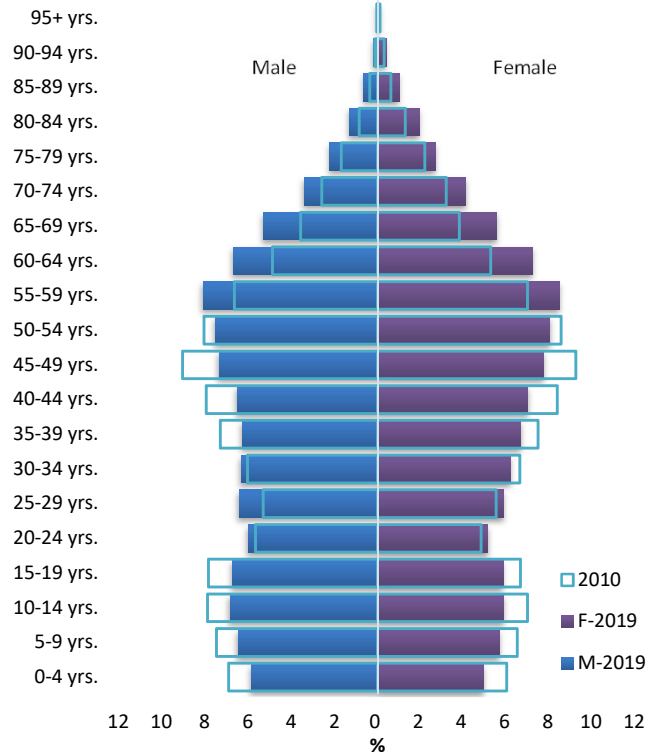


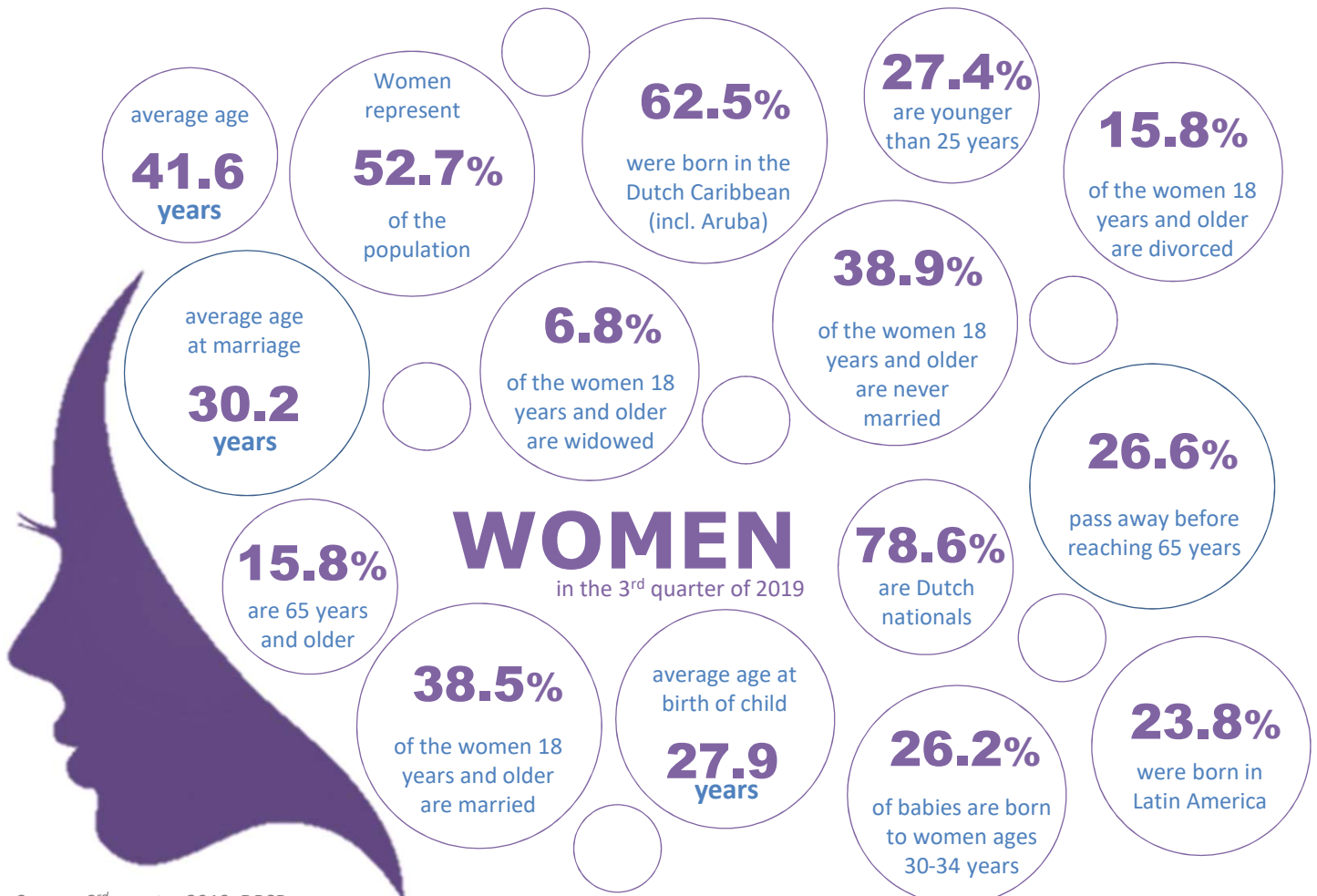
Table 1. Total population by age and sex

	End of year			3 <sup>rd</sup> Q 2019			Growth rate (2010=100)
	2016	2017	2018	Male	Female	Total	
0-4 yrs.	6,711	6,623	6,303	3,088	2,892	5,980	-8.17
5-9 yrs.	6,739	6,680	6,703	3,421	3,338	6,759	-4.03
10-14 yrs.	7,121	7,109	7,140	3,617	3,453	7,070	-5.77
15-19 yrs.	7,328	7,213	7,153	3,551	3,424	6,975	-4.49
20-24 yrs.	6,616	6,516	6,350	3,167	3,014	6,181	17.04
25-29 yrs.	6,432	6,632	6,885	3,391	3,434	6,825	24.55
30-34 yrs.	6,791	6,789	6,829	3,339	3,624	6,963	8.66
35-39 yrs.	7,330	7,276	7,281	3,312	3,918	7,230	-3.27
40-44 yrs.	7,608	7,456	7,507	3,437	4,105	7,541	-8.72
45-49 yrs.	8,768	8,673	8,570	3,881	4,528	8,409	-9.03
50-54 yrs.	9,178	8,994	8,774	3,965	4,702	8,667	3.06
55-59 yrs.	8,719	8,902	9,118	4,274	4,973	9,248	34.11
60-64 yrs.	7,081	7,302	7,609	3,527	4,237	7,764	51.19
65-69 yrs.	5,229	5,549	5,829	2,796	3,252	6,048	61.70
70-74 yrs.	3,653	3,855	4,074	1,806	2,413	4,218	43.76
75-79 yrs.	2,584	2,657	2,702	1,169	1,583	2,752	39.29
80-84 yrs.	1,603	1,633	1,736	697	1,140	1,837	67.76
85-89 yrs.	783	881	879	341	592	933	87.24
90-94 yrs.	254	249	320	103	234	338	55.81
95+ yrs.	90	93	87	23	75	98	33.37
Total	110,617	111,083	111,849	52,906	58,931	111,837	10.20

Graph 1. Population CBS, Census 2010 vs 3<sup>rd</sup> Qtr 2019



Source: 2010 Population and Housing Count (CBS) and the Population and Civil Registry Office (DBSB)



Source: 3<sup>rd</sup> quarter 2019, DBSB

**Table 2. Live births by age of mother**

	End of year			YTD				3 <sup>rd</sup> Q 2019		
	2016	2017	2018	2016	2017	2018	2019	Male	Female	Total
< 15 yrs.	1	1	-	1	1	-	-	-	-	-
15-19 yrs.	96	94	70	76	66	45	58	9	15	24
20-24 yrs.	292	300	249	225	219	170	191	25	41	66
25-29 yrs.	353	338	298	249	228	231	207	39	31	70
30-34 yrs.	284	274	246	211	200	190	159	37	29	66
35-39 yrs.	182	156	131	144	122	93	95	16	14	30
40-44 yrs.	48	35	33	28	23	28	23	3	8	11
45-49 yrs.	3	4	-	3	4	-	1	-	-	-
50+ yrs.	-	-	1	-	-	1	1	-	-	-
Not reported	-	-	-	-	-	-	-	-	-	-
<b>Total</b>	<b>1,259</b>	<b>1,202</b>	<b>1,028</b>	<b>937</b>	<b>863</b>	<b>758</b>	<b>735</b>	<b>129</b>	<b>138</b>	<b>267</b>

Source: Population Registry Office

Excluding revision

**Table 3. Deaths by age and sex**

	End of year			YTD				3 <sup>rd</sup> Q 2019		
	2016	2017	2018	2016	2017	2018	2019	Male	Female	Total
< 1 yrs.	5	6	9	4	6	7	3	-	-	-
1-49 yrs.	65	49	47	45	37	32	33	5	7	12
50-59 yrs.	85	66	74	68	51	57	46	7	6	13
60-69 yrs.	123	135	130	98	104	97	99	19	13	32
70-79 yrs.	205	181	184	147	140	139	138	30	13	43
80-89 yrs.	228	208	201	174	156	147	124	21	29	50
90+ yrs.	70	62	72	50	50	57	46	2	12	14
<b>Total</b>	<b>781</b>	<b>707</b>	<b>717</b>	<b>586</b>	<b>544</b>	<b>536</b>	<b>489</b>	<b>84</b>	<b>80</b>	<b>164</b>

Source: Population Registry Office

**Table 4. Domiciliation by nationality and place of birth**

	End of year			YTD				3 <sup>rd</sup> Q 2019		
	2016	2017	2018	2016	2017	2018	2019	Male	Female	Total
Dutch born in Aruba/Dutch Antilles	776	807	756	587	600	600	519	111	106	217
Dutch born in the Netherlands	583	580	514	484	504	435	323	84	60	144
Dutch born elsewhere	226	245	254	173	176	198	156	29	31	60
Other Foreign-born	948	1,047	1,620	806	764	1,211	1,051	136	193	329
Unknown	11	6	1	9	5	1	18	1	3	4
<b>Total</b>	<b>2,544</b>	<b>2,685</b>	<b>3,145</b>	<b>2,059</b>	<b>2,049</b>	<b>2,445</b>	<b>2,067</b>	<b>361</b>	<b>393</b>	<b>754</b>

Source: Population Registry Office

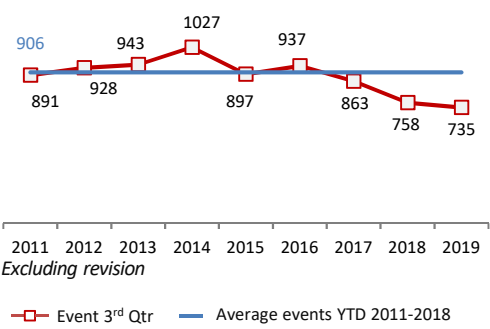
**Table 5. Departures by nationality and place of birth**

	End of year			YTD				3 <sup>rd</sup> Q 2019		
	2016	2017	2018	2016	2017	2018	2019	Male	Female	Total
Dutch born in Aruba/Dutch Antilles	1,141	1,354	1,320	943	1,152	1,122	1,158	354	367	721
Dutch born in the Netherlands	519	537	602	453	472	515	422	101	133	234
Dutch born elsewhere	319	434	380	266	355	324	356	82	112	194
Other Foreign-born	517	387	388	379	294	300	387	97	74	171
Unknown	-	2	-	0	2	0	1	-	-	-
<b>Total</b>	<b>2,496</b>	<b>2,714</b>	<b>2,690</b>	<b>2,041</b>	<b>2,275</b>	<b>2,261</b>	<b>2,324</b>	<b>634</b>	<b>686</b>	<b>1,320</b>

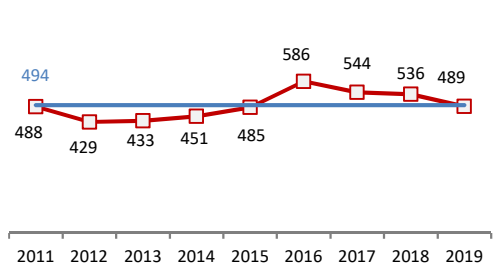
Source: Population Registry Office

3<sup>rd</sup> Quarter 2019

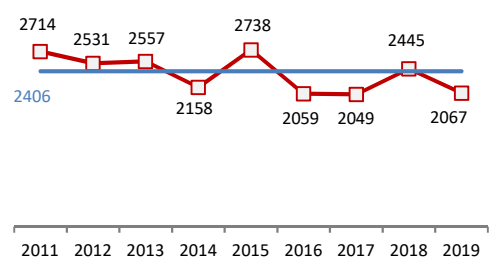
**Graph 2. Births 2019 and 2011-2018 avg, YTD**



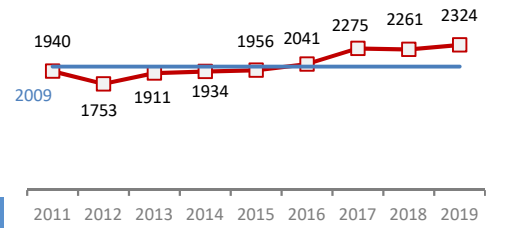
**Graph 3. Deaths 2019 and 2011-2018 avg, YTD**



**Graph 4. Domiciliation 2019 and 2011-2018 avg, YTD**



**Graph 5. Departures 2019 and 2011-2018 avg, YTD**



This Quarterly Demographic Bulletin is provided by the Central Bureau of Statistics Aruba and represents a snapshot of the information provided by the source(s) as indicated. While we endeavor to keep the information up to date and correct, we make no representation or warranties of any kind, expressed or implied, about the completeness, accuracy, reliability, suitability or availability with respect to the information or related graphics contained in this bulletin for any purpose. The information contained in this publication should still be considered as provisional and is released for general information purposes only.