



Population growth

As of the end of 2006 the population totaled 103,484 persons. Of which 47.7 percent was men and 52.3 was women. 20.7 percent of the population was younger than 15 years of age, 8.8 percent was 65 years or older and 70.5 percent was in the working age category (15-64 yrs.). The number of children under age 5 decreased with 9.32 percent since 2000. The group of persons 65 years and older on the other hand increased with 34.7 percent since 2000.

Figure 1 Population growth, basis 2000

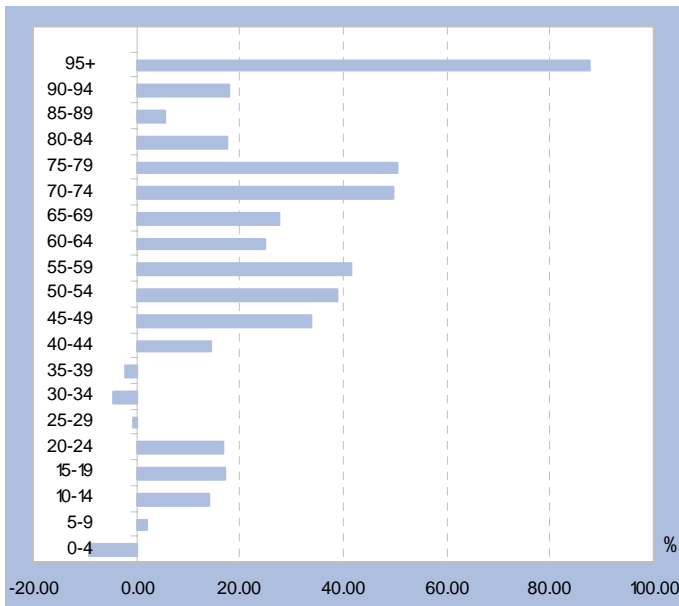
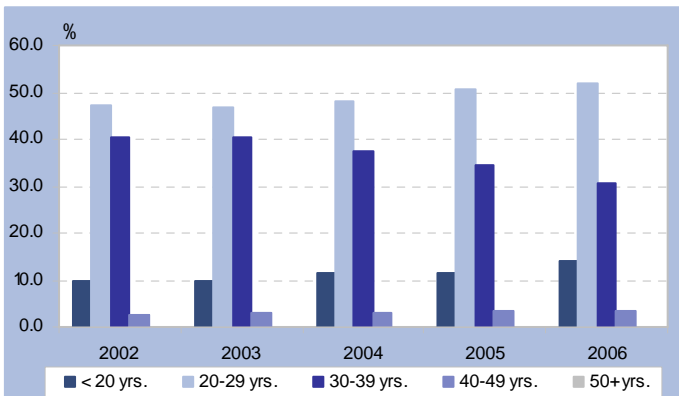


Figure 2 Live births by age of mother in percentage of total births, 2003-2006



Deaths

In 2006 there were slightly more deaths registered than the last three years. A total of 535 deaths were registered of which 77.6 percent was older than 60 years of age. Worth mentioning is the increasing number of babies dying before their first birthday.

Table 1 Population by age and sex, 2003-2006

	End of year			4th Q 2006			Index (2000=1)
	2003	2004	2005	Male	Female	Total	
0-4 yrs.	6,577	6,538	6,477	3,230	3,144	6,374	-9.32
5-9 yrs.	7,346	7,418	7,459	3,730	3,611	7,341	2.10
10-14 yrs.	7,324	7,426	7,698	3,927	3,810	7,736	13.88
15-19 yrs.	6,519	6,865	7,135	3,645	3,613	7,258	17.00
20-24 yrs.	5,305	5,529	5,818	2,976	3,006	5,981	16.67
25-29 yrs.	5,991	6,209	6,359	2,994	3,354	6,348	-0.54
30-34 yrs.	7,937	7,915	7,807	3,527	3,956	7,482	-4.70
35-39 yrs.	8,801	8,763	8,872	4,197	4,720	8,917	-2.28
40-44 yrs.	9,407	9,775	9,932	4,605	5,164	9,769	14.61
45-49 yrs.	8,113	8,516	9,018	4,447	4,940	9,387	33.88
50-54 yrs.	6,461	6,881	7,253	3,510	4,084	7,594	38.91
55-59 yrs.	4,895	5,156	5,530	2,750	3,111	5,861	41.73
60-64 yrs.	3,705	3,873	4,097	2,021	2,350	4,371	25.09
65-69 yrs.	3,058	3,184	3,324	1,509	1,858	3,367	27.45
70-74 yrs.	2,155	2,288	2,404	1,076	1,501	2,576	49.78
75-79 yrs.	1,209	1,335	1,480	673	918	1,591	50.32
80-84 yrs.	753	782	794	339	504	843	17.42
85-89 yrs.	412	421	443	134	266	400	5.63
90-94 yrs.	183	179	175	53	139	192	18.06
95+ yrs.	55	57	74	19	73	93	87.64
Total	96,207	99,109	102,149	49,362	54,121	103,484	13.64

Live Births

In 2006 1,222 babies were registered at the Population Registry Office. During the last five years the number of babies born to women aged 29 years or younger is increasing. The number of babies who were born to mothers aged 30-39 on the other hand, is decreasing. The number of babies born to teenage mothers is 12.7 percent of all registered births in 2006, compared to 9.7 percent in 2003.

Table 2 Live births by age of mother, 2003-2006

	2003	2004	2005	2006				
				1st Q	2nd Q	3rd Q	4th Q	Total
< 15 yrs.	3	8	1	0	2	0	1	3
15-19 yrs.	118	127	138	41	31	39	41	152
20-24 yrs.	273	256	290	74	69	83	83	309
25-29 yrs.	309	322	335	82	64	86	82	314
30-34 yrs.	336	283	258	51	57	75	49	232
35-39 yrs.	168	162	170	33	29	53	49	164
40-44 yrs.	36	33	37	11	7	13	16	47
45-49 yrs.	1	2	5	1	0	0	0	1
50+ yrs.	0	0	0	0	0	0	0	0
Total	1244	1193	1234	293	259	349	321	1,222

Table 3 Deaths by age, 2003-2006

	2003	2004	2005	2006				
				1st Q	2nd Q	3rd Q	4th Q	Total
< 1 yrs.	3	3	6	4	2	1	1	8
1-49 yrs.	68	71	66	14	24	17	14	69
50-59 yrs.	65	56	60	12	12	11	8	43
60-69 yrs.	104	104	82	28	24	32	30	114
70-79 yrs.	104	118	119	37	29	38	39	143
80-89 yrs.	111	101	116	30	26	32	26	114
90+ yrs.	46	49	33	6	15	12	11	44
Total	501	502	482	131	132	143	129	535

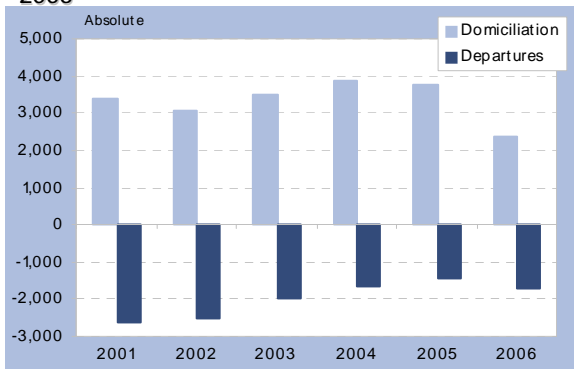
Domiciliation

The number of persons who registered at the Population Registry Office during 2006 show a dramatic decrease. This may be in part explained by the effect of the administrative stop and re-organization of the DIMAS. The very small number of 'locals' registering will need further analysis. In total 2,364 persons registered at the registry. That is 35.8 percent less than the average number of persons coming to Aruba during the last ten years.

Departures

Unlike domiciliation, the number of persons de-registering increased, after a couple of years showing 'low' emigration rates. This increase however cannot be attributed to more foreign-born persons leaving, but more to the increasing number of 'locals' and Dutch nationals de-registering.

Figure 3 Domiciliation and departures 2002-2006



Marriages and Divorces

The number of marriages for both 2005 and 2006 are preliminary, since the Population Registry Office is experiencing some technical problems with the extraction files. No detailed data is available for 2006.

In 2002 the crude divorce rate sky-rocketed to 5.5 per thousand compared to an average of an annual 3 per thousand. Since then the number of divorces remain high compared to the decreasing number of marriages in each year. Even so, in 2003 up to 2005 the crude divorce rate slowed down to being 4.3 per thousand in 2005. In 2006 however the number of divorces per thousand population increased again to 5.1 per thousand.

Table 4 Domiciliation by nationality and place of birth

	2003	2004	2005	2006				Total
				1st Q	2nd Q	3rd Q	4th Q	
Dutch born in Aruba/Neth. Ant.	1,031	1,226	1,172	224	175	279	171	849
Dutch born in the Netherlands	542	682	812	158	142	220	105	625
Dutch born elsewhere	189	211	212	56	52	60	31	199
Foreign-born	1,723	1,703	1,504	216	90	158	148	612
Unknown	31	36	38	7	13	31	28	79
Total	3,516	3,858	3,738	661	472	748	483	2,364

Table 5 Departures by nationality and place of birth

	2003	2004	2005	2006				Total
				1st Q	2nd Q	3rd Q	4th Q	
Dutch born in Aruba/Neth. Ant.	1,110	792	671	104	143	415	151	813
Dutch born in the Netherlands	406	409	424	55	128	256	72	511
Dutch born elsewhere	240	201	151	22	30	69	38	159
Foreign-born	240	245	220	55	74	48	57	234
Unknown	2	2	3	0	0	0	0	0
Total	1,998	1,649	1,469	236	375	788	318	1,717

Table 6 Total marriages

	2003	2004	2005	2006				Total
				1st Q	2nd Q	3rd Q	4th Q	
Total	1,015	1,184	1,091	178	236	251	311	976

Note: due to technical problems the data on 2006 is incomplete

Table 7 Divorces by Aruban status and place of divorce

	2003	2004	2005	2006				Total
				1st Q	2nd Q	3rd Q	4th Q	
Both partners residents, divorced in Aruba	383	402	342	110	128	115	102	455
Both partners residents, divorced elsewhere	3	1	5	0	1	0	0	1
Both partners non-residents, divorced in Aruba	3	3	1	0	2	0	0	2
Male resident, divorced elsewhere with non-resident Female	29	15	17	3	7	1	0	11
Male resident, divorced in Aruba with non-resident Female	31	37	30	3	8	5	6	22
Female resident, divorced elsewhere with non-resident Male	15	6	12	3	2	0	1	6
Female resident, divorced in Aruba with non-resident Male	46	23	38	5	10	9	9	33
Unknown	0	0	0	0	0	0	1	1
Total	510	487	445	124	158	130	119	531