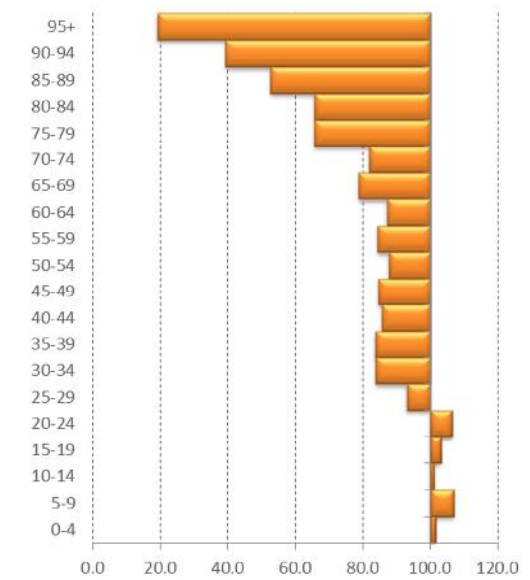


Table 1 Population by age and sex

	End of year						2013			Index (2010=100)
	2011			2012			3 rd Q			
	Male	Female	Total	Male	Female	Total	Male	Female	Total	
0-4 yrs.	3,221	3,039	6,260	3,088	3,023	6,111	3,038	2,989	6,028	-7.44
5-9 yrs.	3,551	3,444	6,995	3,619	3,387	7,006	3,618	3,379	6,997	-0.65
10-14 yrs.	3,818	3,743	7,561	3,740	3,751	7,491	3,732	3,686	7,418	-1.12
15-19 yrs.	3,868	3,688	7,556	3,907	3,752	7,660	3,827	3,708	7,535	3.17
20-24 yrs.	2,881	2,691	5,572	3,051	2,833	5,884	3,176	2,982	6,158	16.61
25-29 yrs.	2,638	2,973	5,611	2,725	2,969	5,695	2,799	3,008	5,807	5.96
30-34 yrs.	2,976	3,562	6,539	3,005	3,566	6,571	3,002	3,577	6,579	2.66
35-39 yrs.	3,354	3,826	7,179	3,260	3,823	7,083	3,241	3,869	7,110	-4.87
40-44 yrs.	3,914	4,585	8,499	3,926	4,587	8,513	3,884	4,531	8,414	1.85
45-49 yrs.	4,216	4,850	9,066	4,124	4,824	8,948	4,053	4,784	8,837	-4.40
50-54 yrs.	4,106	4,684	8,790	4,226	4,818	9,044	4,293	4,894	9,187	9.25
55-59 yrs.	3,323	3,908	7,232	3,444	4,071	7,515	3,567	4,222	7,789	12.95
60-64 yrs.	2,520	2,962	5,482	2,723	3,157	5,880	2,851	3,266	6,117	19.10
65-69 yrs.	1,803	2,213	4,016	1,896	2,366	4,262	1,968	2,498	4,467	19.42
70-74 yrs.	1,321	1,688	3,009	1,389	1,717	3,106	1,428	1,743	3,171	8.06
75-79 yrs.	835	1,287	2,121	852	1,347	2,198	902	1,373	2,275	15.15
80-84 yrs.	488	731	1,219	557	819	1,376	558	848	1,406	28.39
85-89 yrs.	170	341	511	176	335	511	204	388	592	18.77
90-94 yrs.	61	147	208	67	154	220	63	161	224	3.58
95+ yrs.	12	67	80	13	68	81	14	72	86	16.45
Total	49,075	54,429	103,504	49,788	55,369	105,157	50,220	55,975	106,195	4.64

Source: Population Registry Office

 Figure 1. Males per 100 females, 3rd Quarter 2013


- Up until the end of the 3rd quarter of 2013, 829 babies were born, 429 persons passed away, 2,548 persons migrated to Aruba and registered themselves at the population registry and 1,910 persons de-registered and left the island, totaling 106,195 persons.

Table 2 Live births by age of mother

	End of year		YTD			3 rd Q 2013		
	2011	2012	2011	2012	2013	Male	Female	Total
< 15 yrs.	3	2	2	2	4	1	-	1
15-19 yrs.	144	135	106	94	94	22	17	39
20-24 yrs.	254	278	181	205	208	30	40	70
25-29 yrs.	262	268	187	188	190	29	38	67
30-34 yrs.	248	247	190	179	178	35	28	63
35-39 yrs.	141	152	101	122	128	26	17	43
40-44 yrs.	38	54	25	37	26	5	1	6
45-49 yrs.	2	3	1	3	1	-	-	-
50+ yrs.	-	-	-	-	-	-	-	-
Not reported	-	1	-	-	-	-	-	-
Total	1,092	1,140	793	830	829	148	141	289

Source: Population Registry Office

Table 3 Deaths by age

	End of year		YTD			3 rd Q 2013		
	2011	2012	2011	2012	2013	Male	Female	Total
< 1 yrs.	7	3	3	2	4	1	0	1
1-49 yrs.	69	69	42	45	38	5	4	9
50-59 yrs.	83	67	70	45	56	12	4	16
60-69 yrs.	114	113	83	85	78	15	14	29
70-79 yrs.	155	147	123	110	112	14	19	33
80-89 yrs.	149	133	119	98	96	12	16	28
90+ yrs.	56	63	48	44	45	5	8	13
Total	633	595	488	429	429	64	65	129

Source: Population Registry Office

- The total population consists of 50,220 men and 55,975 women, a sex ratio of 89.7 men per 100 women.
- Up to age 24, the male-female ratio is 104, reflecting the fact that more boys than girls are born every year. Boys continue to outnumber girls through early childhood and young adulthood. (see Figure 1)
- The male-female ratio drops gradually from 93.1 in the age group 25 to 29 years to 85.1 in the age group 30 to 59 years.
- Among the older adults (60 years and over), the male-female ratio falls rapidly, as women increasingly outnumber men at older ages.
- The sex ratio for the 'Young Old' (60-74 years) is 82.7. In the 'Old' age group (75-84 years) the ratio drops to 65.8 men for every 100 women and in the age group of the 'Oldest Old' (85 years and over), the male-female ratio is 37.1.
- The population is growing and the population is steadily ageing. As of 2010 the share of the elderly population (65 years and over) was 10.4 percent of the total population. By the end of the 3rd quarter 2013 the group of elderly totals 12,221 persons, 11.5 percent of the total population.
- The ratio of *older* dependents -ages 64 and older- to the working-age population -those ages 15-64, was 15.1 in 2010. By the end of the 3rd quarter 2013 the old age dependency ratio is 16.6.

Table 5 Domiciliation by nationality and place of birth

	End of year		2013											
			1 st Q			2 nd Q			3 rd Q			YTD		
	2011	2012	Male	Female	Total	Male	Female	Total	Male	Female	Total	Male	Female	Total
Dutch born in Aruba/Dutch Antilles	768	943	115	85	200	97	109	206	146	155	301	358	349	707
Dutch born in the Neth.	549	626	79	52	131	68	74	142	141	151	292	288	277	565
Dutch born elsewhere	214	206	30	30	60	30	26	56	32	42	74	92	98	190
Other Foreign-born	1,896	1,447	148	199	347	122	168	290	168	230	398	438	597	1,035
Unknown	39	61	12	7	19	7	7	14	8	10	18	27	24	51
Total	3,466	3,283	384	373	757	324	384	708	495	588	1,083	1,203	1,345	2,548

Source: Population Registry Office

Table 6 Departures by nationality and place of birth

	End of year		2013											
			1 st Q			2 nd Q			3 rd Q			YTD		
	2011	2012	Male	Female	Total	Male	Female	Total	Male	Female	Total	Male	Female	Total
Dutch born in Aruba/Dutch Antilles	1,293	1,119	91	83	174	127	106	233	290	301	591	508	490	998
Dutch born in the Neth.	498	526	39	26	65	48	44	92	118	108	226	205	178	383
Dutch born elsewhere	246	246	18	26	44	33	41	74	64	80	144	115	147	262
Other Foreign-born	302	283	32	29	61	54	58	112	50	44	94	136	131	267
Unknown	0	1	0	0	0	0	0	0	0	0	0	0	0	0
Total	2,339	2,175	180	164	344	262	249	511	522	533	1,055	964	946	1,910

Source: Population Registry Office

- For 2013 the majority of people immigrating to Aruba is foreign-born (70.3%) and is mostly women (54.3%). The four most popular countries of origin are the Netherlands (22.6%), the Dutch Antilles (17.1%), Colombia (14.6%) and Aruba (13%).
- Regardless of their country of origin, the median age of people migrating to Aruba is 28 years.

- As for those leaving the island the top four countries of origin are Aruba (35.5%), the Netherlands (20%), the Dutch Antilles (17.1%) and Colombia (7.3%). About an equal number of men and women leave the island, the sex ratio is 102 men for every 100 women, regardless of their origin.
- Contrary to the people immigrating to Aruba, the median age of those leaving the island is 20 years for those born in Aruba or the Dutch Antilles with a Dutch nationality and 29 years for the foreign-born.

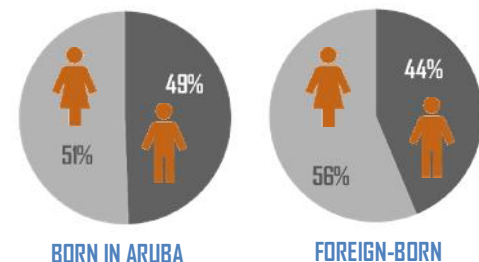
www.cbs.aw POPULATION QUICK FACTS

33.9% OF THE POPULATION IS FOREIGN-BORN¹

TOP 6 COUNTRIES OF THE FOREIGN-BORN POPULATION¹



VISIT OUR WEBSITE AND MAKE YOUR OWN TABLES AND CROSSTABLES IN THE 2010 CENSUS DATA.



Source: Fifth Population and Housing Census 2010.