



### Highlights November 2008 in Review

#### Prices:

- Inflation in November 2008 down by 3.7 percent
- Year over year inflation rose by 4.4 percent
- Year to date inflation in November at 2.7 percent
- Price of gasoline down by Afl. 0.71 in November 2008
- Average world crude oil price at \$53.27 per barrel

#### Utilities:

- Water consumption down by 12.8 percent in November 2008
- Electricity distribution fell by 1.4 percent in November 2008

#### Foreign Trade:

- Import of goods down by 27.4 percent in November 2008
- Value of export dropped by 59.5 percent in November 2008

#### Government:

- Total tax revenue in November 2008 fell by 1.5 percent
- Year to date total tax revenue up by 10.2 percent

#### Tourism:

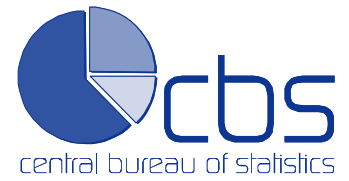
- Cruise passenger arrivals fell by 6.7 percent
- Room nights rented down by 3.5 percent in November 2008
- Occupancy rate at 74.1 percent in November 2008
- Average daily rate reached Afl. 287.38
- Revenue per available room down by 11.0 percent

### Monthly Economic Indicators

November 2008	% Change	
	Last Month	Last Year
<b>Consumer prices</b>		
Total index	-3.7	4.4
<b>Utilities</b>		
Water consumption	-6.9	-12.8
Electricity distribution	-3.3	-1.4
<b>Foreign Trade</b>		
Import	-18.6	-27.4
Export	-41.7	-59.5
<b>Government</b>		
Total tax revenue	4.9	-1.5
<b>Tourism</b>		
Cruise passengers	142.8	-6.7
Room nights rented	-3.9	-3.5
Occupancy rate	7.4	-4.9
Avg daily rate	13.4	4.4
Revpar	15.5	-11.0

Source: Central Bureau of Statistics Aruba

L.G. Smith Boulevard 160  
Oranjestad, Aruba  
Phone: +297 5837433  
Fax: +297 5838057  
[www.cbs.aw](http://www.cbs.aw)



## Table of Contents

■ Consumer Price Index.....	2.
■ Utilities.....	4.
■ Foreign Trade.....	5.
■ Government.....	6.
■ Tourism.....	7.
■ Upcoming CBS Publications and Events.....	8.
■ Released Publications in 2008.....	9.
■ Corresponding Tables.....	10.

## Inflation in November down by 3.7 percent

In November 2008, average prices in Aruba fell by 3.7 percent compared to the previous month. The lower rate of inflation was partly attributed to the recent drop of gasoline prices, as a result of lower international oil prices. With the exception of Food (+1.2%) and Beverage & tobacco (+0.8%), a drop in average prices has been registered for all product categories, particularly, Housing (-8.1%), Transport & communication (-7.7%), Goods & services n.e.c. (-2.0%), Leisure & recreational goods (-1.7%), Household operation (-0.6%) and Clothing & footwear (-0.5%). In the January-to-November period of 2008, average prices dropped with 5.7 percentage points compared to the similar period of 2007.

On a yearly basis, consumer prices increased by 4.4 percent in November 2008. Major price increases were recorded in the following sectors:

1. **Food**; In November 2008, prices in the Food sector rose by 12.8 percent, mainly as a result of price increases of "fats & oils" (23.6%), "potatoes, vegetables & fruit" (18.6%), "grain products" (16.1%), "dairy products" (14.4%), "meat, poultry, game, fish & shellfish" (11.8%), "take away beverages & meal" (8.9%), "groceries n.e.c." (8.0%), "sugar, sugar products & chocolate" (6.7%).

2. **Clothing & footwear**; Average prices in this sector rose by 5.6 percent compared to November 2007. Prices of "Clothing & accessories" rose by 7.1 percent while prices of "Footwear" dropped by 1.6 percent.

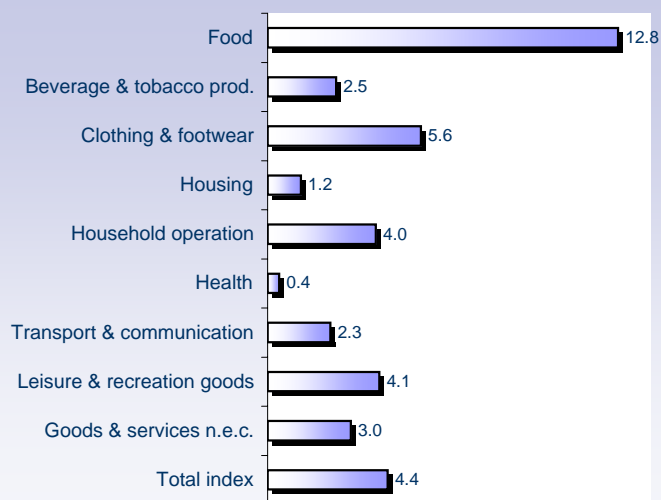
3. **Leisure & recreation goods**; Price increases were recorded for all categories, particularly, "Formal education fees" (5.1%), "Admission charges to events & venues" (4.4%) and "Costs incurred to recreational purposes" (3.8%) and "Publications" (2.3%).

### Consumer Prices

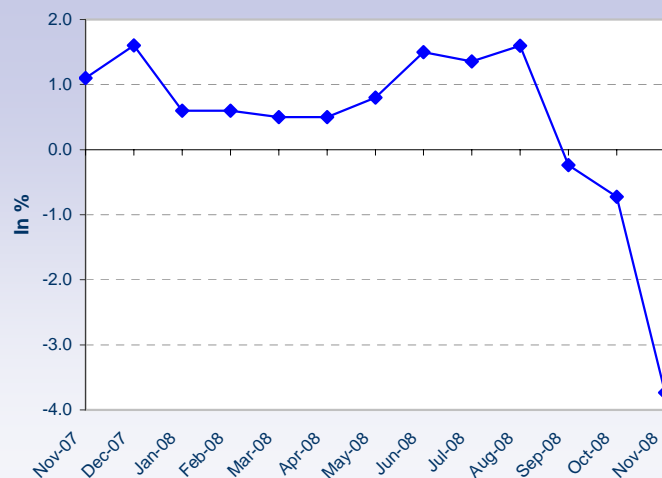
November 2008	% Change since		
	last month	last year	YTD % change
Food	1.2	12.8	12.5
Beverage & tobacco prod.	0.8	2.5	3.5
Clothing & footwear	-0.5	5.6	-0.6
Housing	-8.1	1.2	0.0
Household operation	-0.6	4.0	3.2
Health	0.0	0.4	0.4
Transport & communication	-7.7	2.3	0.3
Leisure & recreation goods	-1.7	4.1	2.7
Goods & services n.e.c.	-2.0	3.0	2.1
<b>Total index</b>	<b>-3.7</b>	<b>4.4</b>	<b>2.7</b>

Source: Central Bureau of Statistics Aruba

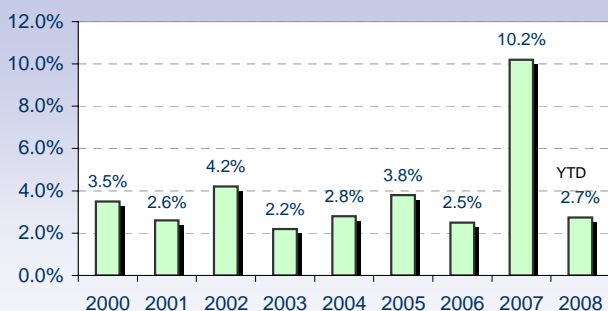
### Yearly % Price Change



### Monthly % Change of C.P.I.



### CPI - End of Year



## Prices of water, electricity and gasoline

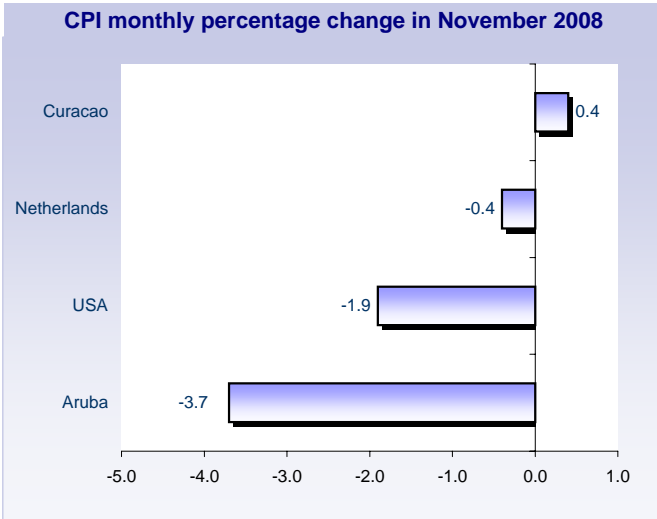
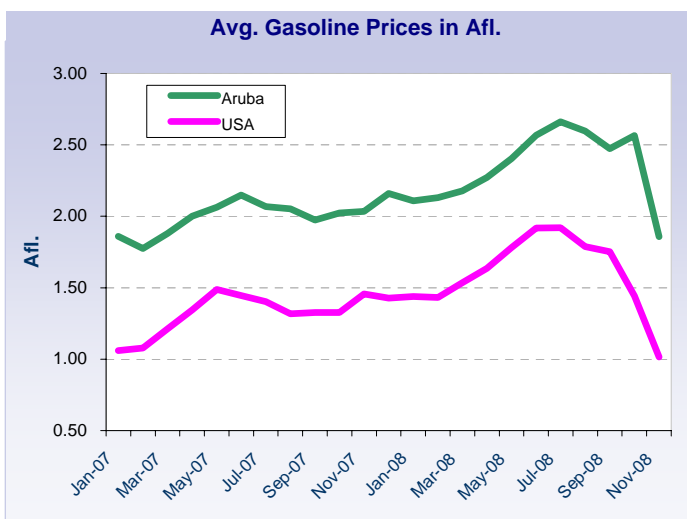
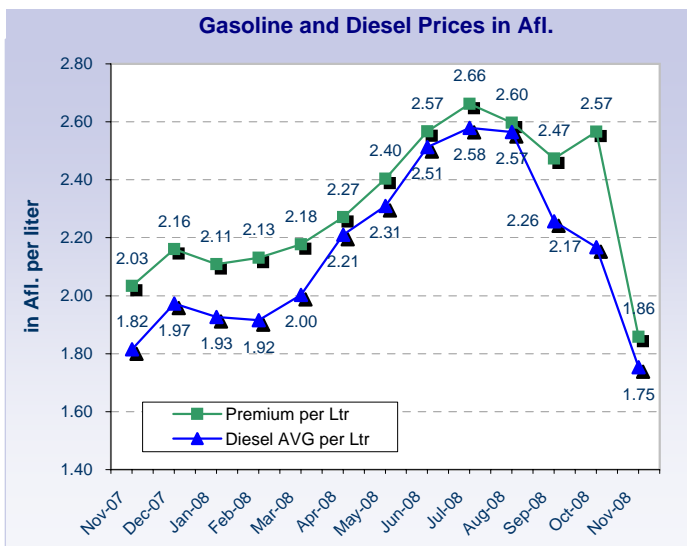
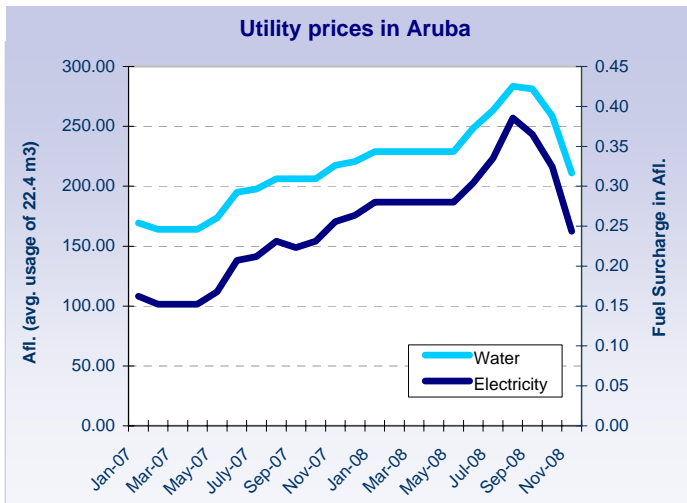
The downward trend in oil prices continued in November 2008, contributing to a drop in utility and gasoline prices. In November 2008, fuel surcharge dropped by 25.0 percent compared to the previous month, reaching Afl. 0.24. Average retail price of water (average usage of 22.4 m<sup>3</sup>) declined by 18.4 percent compared to October 2008. Gasoline prices dropped by 27.6 percent compared to the previous month, reaching the amount of Afl. 1.86 per liter, while the average diesel price fell by 19.1 percent reaching an average price of Afl. 1.75 per liter.

### Prices of utilities during December 2008

	Price change	Impact on CPI
Water <sup>1</sup>	-24.0%	-1.02
Electricity <sup>2</sup>	-25.3%	-1.54
Gasoline (premium)	-15.6%	-0.60
<b>Total impact</b>		<b>-3.16</b>

Source: Central Bureau of Statistics Aruba

Disregarding any other important fluctuations in prices over the month of December 2008, price movements of water, electricity and gasoline during the month of December will affect the consumer price index of December 2008 by -3.16.



CPI USA: seasonally unadjusted

1) Based on an average water usage of 22.4 m<sup>3</sup> per month.  
 2) Based on an average electricity consumption of 700 kWh per month.

## Water distribution fell by 12.8 percent

In November 2008, average water distribution (houses, companies, hotels, government) dropped by 12.8 percent compared to November 2007. Water usage dropped in all sectors, particularly, household sector (-12.5%), commercial sector (-14.8%), hotels (-12.8%) and the public sector (-8.4%). On a year to date basis, total water distribution in November 2008 dropped by 2.3 percent compared to the similar period of 2007.

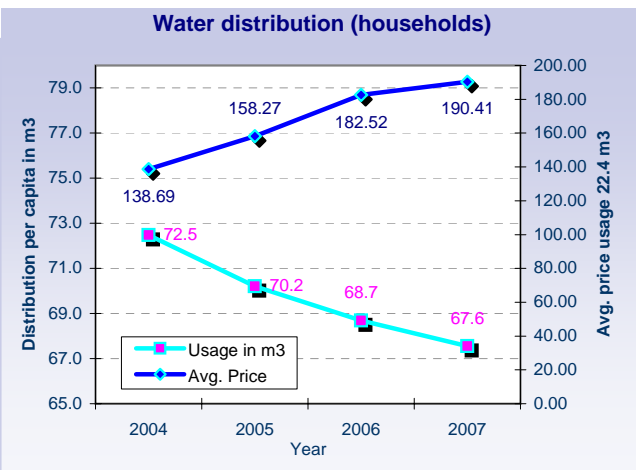
## Electricity distribution down by 1.4 percent

In November 2008, electricity (in MWh) supplied to Elmar for distribution declined by 1.4 percent compared to November 2007. In the January to November period of 2008, average electricity distribution rose by 0.5 percent compared to the similar period of 2007.

### Monthly electricity distribution to Elmar (average)

November 2008		% Change since		
		last month	last year	YTD % change
Electricity (in MWh)	65,863	-3.3	-1.4	0.5

Source: WEB Aruba N.V., Central Bureau of Statistics Aruba

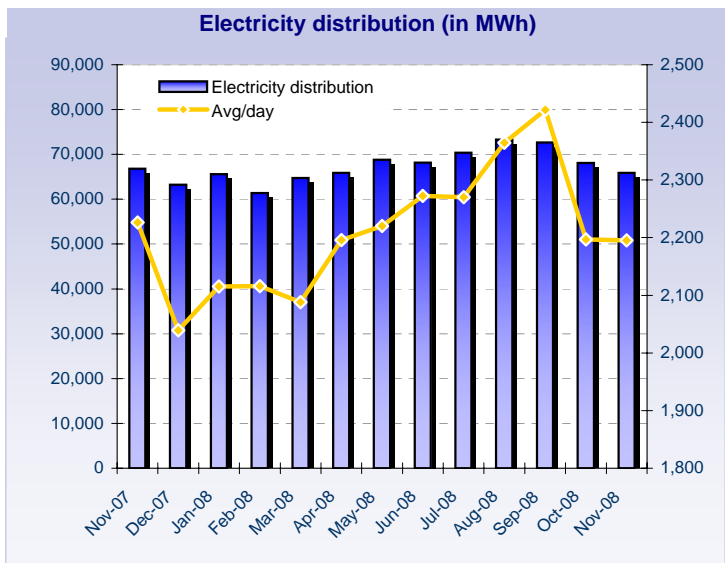
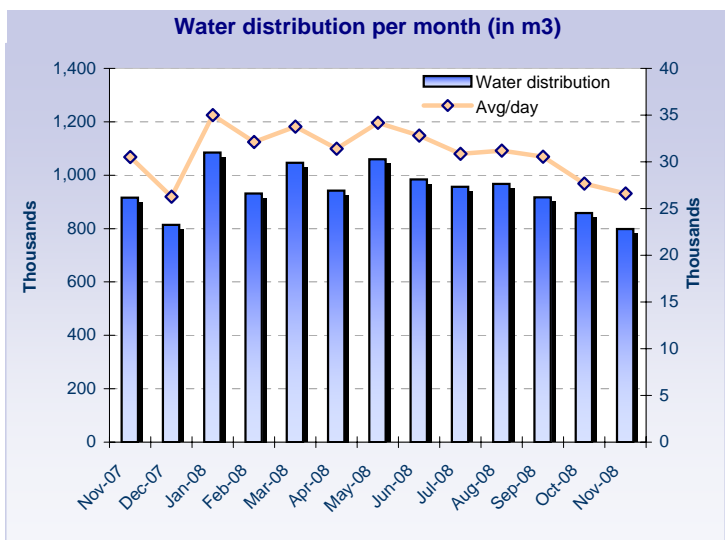


## Water distribution (in m<sup>3</sup>)\*

November 2008		% Change since		
		last month	last year	YTD % change
Houses	478,516	-7.1	-12.5	-5.1
Companies	104,522	-7.4	-14.8	3.3
Hotels	202,714	-6.6	-12.8	3.6
Government	12,562	-5.1	-8.4	-27.2
<b>Total</b>	<b>798,315</b>	<b>-6.9</b>	<b>-12.8</b>	<b>-2.3</b>

Source: WEB Aruba N.V., Central Bureau of Statistics Aruba

\* Calculation of drink water distribution in Aruba (in m3) is based on an average water distribution per month, excluding the distribution to Valero and vessels.



## Total import of merchandise down by 27.4 percent

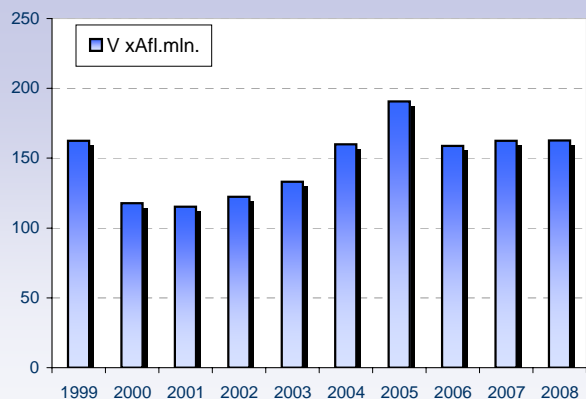
In November 2008, total value of imports of merchandise dropped by 27.4 percent compared to November 2007, after a 22.9 percent growth recorded during the similar period one year earlier. A decline has been registered for all commodity groups, particularly, Agriculture products (-45.4%), Metal products, machinery & equipment (-25.2%) and Textiles, pearls & precious stones (-28.6%). In the commodity group Agriculture products, a drop of 15 percent has been registered for liquors and other distilled beverages.

In the January to November period of 2008, total import increased by 0.1 percent compared to the similar period of 2007, particularly as a result of increases in the imports of Agriculture products (9.6%) and Mineral, chemical and related products (4.0%).

## Total export down by 59.5 percent

Total exports in November 2008 declined by 59.5 percent compared to November 2007, mainly as a result of a drop in the value of export of Agriculture products (-49.5%), Metal products, machinery & equipment (-92.5%), Mineral, chemical & related products (-93.6%) and Other transportable goods (-71.0%). On year to date basis, total export in November rose by 25.0 percent compared to the similar period of 2007.

**Total import of goods to Aruba from major trade partners during the months of November**

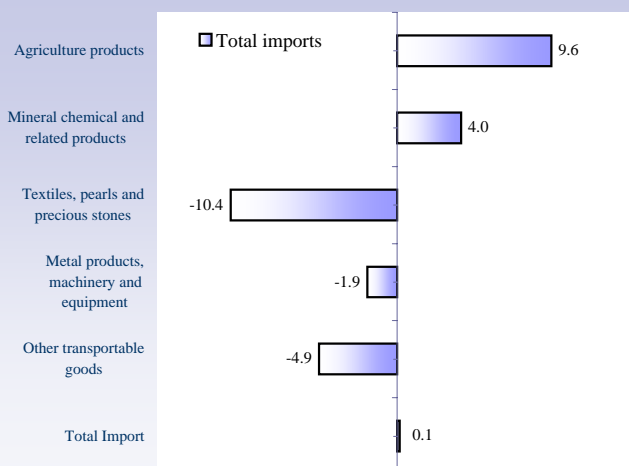


## Total import of goods to Aruba by commodity group

November 2008	Vx1,000 Afl.	% Change since		
		last month	last year	YTD % change
<b>Commodity group</b>				
1. Agriculture products	26,941	-48.8	-45.4	9.6
2. Mineral chemical and related products	23,727	-15.3	-8.4	4.0
3. Textiles, pearls and precious stones	32,069	44.2	-28.6	-10.4
4. Metal products, machinery and equipment	39,247	-20.1	-25.2	-1.9
5. Other transportable good:	28,975	-13.8	-17.9	-4.9
<b>Total Import</b>	<b>150,960</b>	<b>-18.6</b>	<b>-27.4</b>	<b>0.1</b>

Source: Customs Aruba, Central Bureau of Statistics Aruba

## Year to date % change in November 2008



## Total export of goods to Aruba by commodity group

November 2008	Vx1,000 Afl.	% Change since		
		last month	last year	YTD % change
<b>Commodity group</b>				
1. Agriculture products	10,740	-26.4	-49.5	22.2
2. Mineral chemical and related products	204	-92.3	-93.6	2.3
3. Textiles, pearls and precious stones	405	380.8	15.9	116.2
4. Metal products, machinery and equipment	246	-67.2	-92.5	23.0
5. Other transportable good:	586	-79.1	-71.0	37.3
<b>Total Export</b>	<b>12,181</b>	<b>-41.7</b>	<b>-59.5</b>	<b>25.0</b>

Source: Customs Aruba, Central Bureau of Statistics Aruba

## Total tax revenue down by 1.5 percent

Total tax revenue declined by 1.5 percent in November 2008, when compared to November 2007. On a year to date basis, total tax revenue in November 2008 increased by 10.2 percent compared to the similar period of 2007. Taxes on income & profit and taxes on properties increased by 17.8 and 6.2 percent respectively, compared to the same period of 2007. In addition, taxes on services rose by 7.7 percent, while taxes on commodities fell by 3.7 percent compared to similar period one year earlier. Excises on beer, gasoline and cigarettes dropped by 13.0, 11.0 and 21.6 percent respectively, compared to the January-to-November period of 2007. On a year to date basis, turnover tax brought up an additional Afl. 37.2 million in November 2008, which is 31.4 percent higher compared to the comparable period of 2007.

### Tax Revenues<sup>1</sup>

November 2008	(x1,000 Afl.)	% Change since		
		last month	last year	YTD % change
<b>Taxes on income &amp; profit</b>	<b>29,388</b>	<b>11.3</b>	<b>23.6</b>	<b>17.8</b>
Wage tax	17,693	-7.1	-5.1	8.0
Income tax	643	173.8	295.6	1,313.3
Profit tax	10,802	76.4	138.9	54.9
Dividend tax	249	-88.2	-42.5	11.5
<b>Taxes on commodities</b>	<b>24,619</b>	<b>4.2</b>	<b>-15.5</b>	<b>-3.7</b>
Excises on spirits	2,180	74.1	-18.4	1.6
Excises on beer	1,922	21.7	-14.2	-13.0
Excises on gasoline	4,890	2.9	-9.6	-11.0
Excises on tobacco prod	1,057	29.9	-41.2	-21.6
Other customs	167	-4.3	-53.9	-22.7
Import duties	14,404	-4.3	-13.5	2.2
<b>Taxes on property</b>	<b>2,923</b>	<b>-21.3</b>	<b>-43.4</b>	<b>6.2</b>
Long-lease property rights	1,218	76.5	92.7	-35.7
Land tax	1,074	-47.9	-69.5	6.8
Motor vehicle tax	129	-63.0	-17.3	0.5
Succession tax	58	304.8	-35.3	3,413.9
Transfer tax	444	-25.9	-41.8	-23.3
<b>Taxes on services</b>	<b>4,096</b>	<b>7.7</b>	<b>-9.0</b>	<b>7.7</b>
Gambling licenses	1,733	8.9	-7.1	7.3
Lodging tax	2,311	9.7	-10.4	10.3
Stamp duties	52	-51.3	-5.8	-20.9
<b>Turnover tax (BBO)</b>	<b>13,523</b>	<b>2.6</b>	<b>2.5</b>	<b>31.4</b>
<b>Other tax &amp; nontax rev</b>	<b>1,112</b>	<b>-21.8</b>	<b>9.4</b>	<b>-24.8</b>
<b>Total tax revenue</b>	<b>75,662</b>	<b>4.9</b>	<b>-1.5</b>	<b>10.2</b>

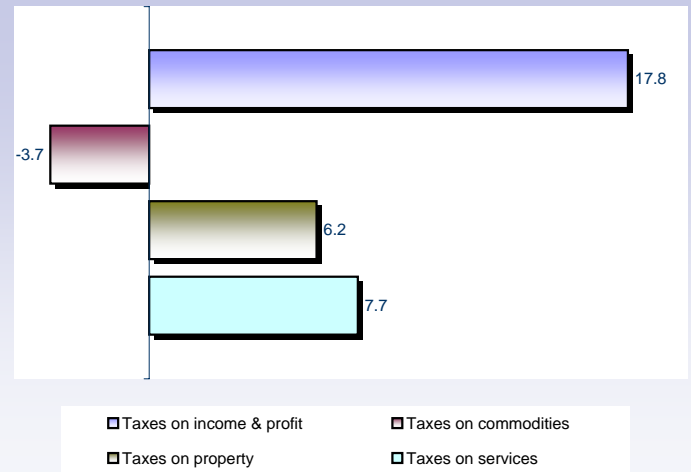
Source: Tax Collector's Office

<sup>1</sup> Excluding AZV and AOV/ AWW.  
Note: Tax revenue figures are provisional.

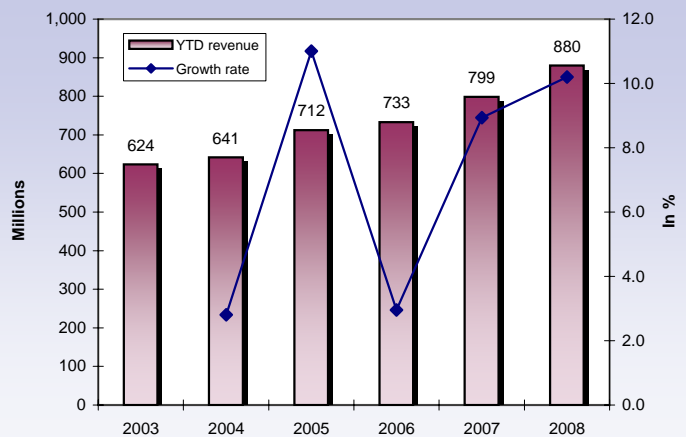
Total tax revenue during the months of November



January-to-November percentage change in 2008 compared to the same period of 2007



Year to date Total Tax Revenue (January - November)





## Passenger traffic and cruise ship arrivals during November 2008

In November 2008, non-local arrivals increased by 12.2 percent compared to November 2007 reaching a total of 67,352. Cruise ship passenger arrivals fell by 6.7 percent in November 2008 compared to November 2007. In the January-to-November period of 2008, the number of cruise passengers arrivals increased by 15.4 percent compared to the similar period of 2007.

### Hotel statistics for the month of November

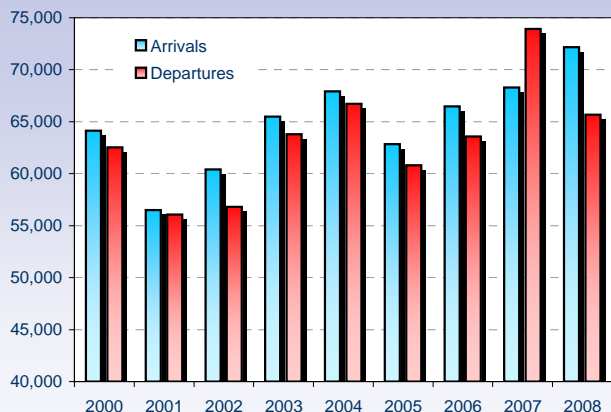
In November 2008, hotel activities showed a better performance compared to the previous month. Compared to November 2007, occupancy rate reached 74.1 percent in November 2008, down from 77.9 percent recorded in November 2007. The revenue per available room fell by 11.0 percent compared to November 2007. In the January-to-November period in 2008, occupancy rate in hotels dropped from 76.9 in 2007 percent to 76.5 percent in 2008.

### Passenger traffic and landings

November 2008	% Change since			YTD
	last month	last year	% change	
<b>Passenger traffic</b>				
Arrivals	72,165	2.7	5.7	9.7
Departure	65,659	-1.0	-11.2	8.7
In transit	5,755	16.5	98.0	57.4
<b>Landings</b>				
Commercial	1,144	5.1	-7.6	6.3
Non-commercial	282	0.4	-21.4	18.2

Source: Department of Immigration

### Airport Traffic during the months of November

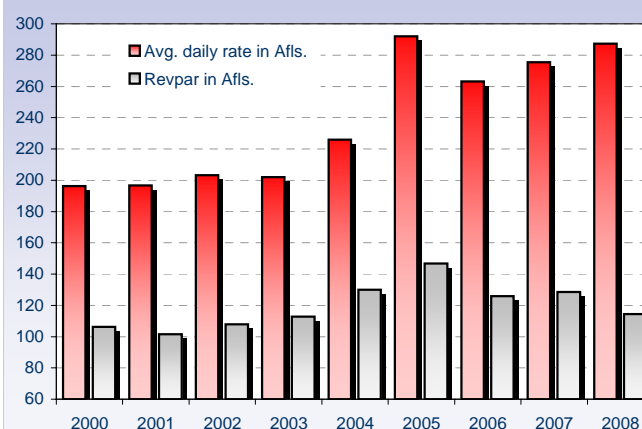


### Tourism

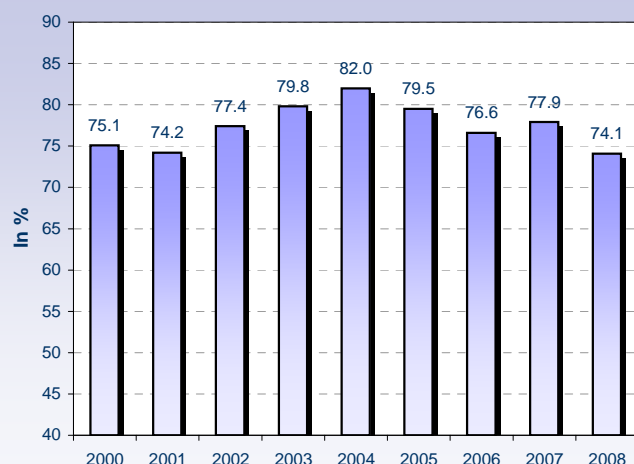
November 2008	% Change since			YTD % change
	last month	last year	% change	
<b>Cruise tourism</b>				
Cruise passengers	63,296	142.8	-6.7	15.4
Cruise calls	32	190.9	-8.6	-8.1
Crew members	26,806	144.7	-7.7	10.4
Total number of visitors	n.a.	n.a.	n.a.	n.a.
<b>Hotel statistics</b>				
Room nights rented	151,438	-3.9	-3.5	3.6
Occupancy in %	74.1	7.4	-4.9	-0.5
Avg. daily rate in Afl.	287.38	13.4	4.4	2.3
Revpar in Afl.	114.40	15.5	-11.0	-3.2
Room revenue in Afl. (x1,000)	23,364	3.3	-9.8	-43.7

Source: Central Bureau of Statistics Aruba, Cruise Tourism Authority

### Avg. Daily Rate & Revpar during the months of November



### Occupancy rate during the months of November



# UPCOMING CBS PUBLICATIONS AND EVENTS

## Release Calendar Publications Central Bureau of Statistics January and February 2009

### January 2009

Hotel Report December 2009

Consumer Price Index December 2008

### Release date

15 January 2009

19 January 2009

### February 2009

Consumer Price Index January 2009

November 2008 in Review

Hotel Report January 2009

December 2008 in Review

06 February 2009

13 February 2009

16 February 2009

27 February 2009

## Upcoming Events in January and February 2009 Central Bureau of Statistics Aruba

### Fieldwork

#### January 2009

Fieldwork Tourist Expenditure Survey January 2009

19 January - 26 January

#### February 2009

Fieldwork Tourist Expenditure Survey February 2009

16 February - 23 February

# RELEASED PUBLICATIONS IN 2008

## Publications Central Bureau of Statistics Aruba

Monthly Publications	Date issued	Prices in Afl.
Consumer Price Index December 2007	16 January 2008	2.50
Hotel Report November 2007	16 January 2008	Free
Hotel Report December 2007	16 January 2008	Free
November 2007 in Review	22 January 2008	Free
December 2007 in Review	08 February 2008	Free
Consumer Price Index January 2008	14 February 2008	2.50
Hotel Report January 2008	26 February 2008	Free
January 2008 in Review	17 March 2008	Free
Consumer Price Index February 2008	31 March 2008	2.50
Hotel Report February 2008	02 April 2008	Free
February 2008 in Review	21 April 2008	Free
Hotel Report March 2008	22 April 2008	Free
Consumer Price Index March 2008	28 April 2008	2.50
Consumer Price Index April 2008	20 May 2008	2.50
March 2008 in Review	23 May 2008	Free
Hotel Report April 2008	03 June 2008	Free
Consumer Price Index May 2008	06 June 2008	2.50
April 2008 in Review	20 June 2008	Free
Hotel Report May 2008	26 June 2008	Free
Consumer Price Index June 2008	04 July 2008	2.50
May 2008 in Review	18 July 2008	Free
Hotel Report June 2008	21 July 2008	Free
Consumer Price Index July 2008	05 August 2008	2.50
June 2008 in Review	11 August 2008	Free
Hotel Report July 2008	27 August 2008	Free
Consumer Price Index August 2008	04 September 2008	2.50
July 2008 in Review	09 September 2008	Free
Hotel Report August 2008	20 September 2008	Free
Consumer Price Index September 2008	03 October 2008	2.50
August 2008 in Review	09 October 2008	Free
Hotel Report September 2008	24 October 2008	Free
Consumer Price Index October 2008	04 November 2008	2.50
September 2008 in Review	17 November 2008	Free
Hotel Report October 2008	17 November 2008	Free
Consumer Price Index November 2008	04 December 2008	2.50
<b>Quarterly Publications</b>		
Economic Profile 3rd Qtr. of 2007	07 February 2008	15.00
Tourist Profile 3rd Qtr. 2007	18 February 2008	10.00
Demographic Bulletin 4th Qtr. 2007	11 March 2008	Free
Foreign Trade Statistics 4th Qtr. 2007	13 March 2008	15.00
Economic Profile 4th Qtr. of 2007	11 April 2008	15.00
Foreign Trade Statistics 1st Qtr. 2008	10 June 2008	15.00
Demographic Bulletin 1st Qtr. 2008	10 June 2008	Free
Economic Profile 1st Qtr. 2008	24 July 2008	15.00
Demographic Bulletin 2nd Qtr. 2008	02 September 2008	Free
Foreign Trade Statistics 2nd Qtr. 2008	09 September 2008	15.00
Economic Profile 2nd Qtr. 2008	14 October 2008	15.00
Demographic Bulletin 3rd Qtr. 2008	07 November 2008	Free
<b>Annual Publications</b>		
Government Sector of Aruba 1997-2007	24 January 2008	26.00
Cost Structure of Businesses in Aruba 1996-2004	18 February 2008	15.00
Statistical Yearbook 2007	03 June 2008	30.00
Statistical Orientation 2007	07 July 2008	Free
Tourist Profile 2007	16 July 2008	30.00
General Government Sector of Aruba 1998-2008	22 September 2008	26.00
<b>Incidental Publications</b>		
Income and Expenditure Survey 2006	16 July 2008	25.00

<b>Consumer Price Index</b>					<b>YTD<sup>1</sup></b>	<b>YTD</b>	<b>Monthly</b>	<b>Yearly</b>
<b>Sector</b>	<b>Oct '07</b>	<b>Nov '07</b>	<b>Oct '08</b>	<b>Nov '08</b>	<b>2007</b>	<b>2008</b>	<b>% change</b>	<b>% change</b>
					in %			
Food	138.9	140.5	156.6	158.5	9.5	12.5	1.2	12.8
Beverage & tobacco	131.6	132.3	134.6	135.6	10.2	3.5	0.8	2.5
Clothing & footwear	129.8	129.4	137.3	136.7	2.2	-0.6	-0.5	5.6
Housing	143.3	147.2	162.1	149.0	14.7	0.0	-8.1	1.2
Household operation	122.1	123.1	128.7	128.0	4.4	3.2	-0.6	4.0
Health	99.9	99.8	100.3	100.3	-0.2	0.4	0.0	0.4
Transport & comm	116.8	117.6	130.3	120.3	7.0	0.3	-7.7	2.3
Leisure & recreation	122.4	123.0	130.3	128.0	7.3	2.7	-1.7	4.1
Goods & services n.e.c.	120.8	121.6	127.8	125.3	6.4	2.1	-2.0	3.0
<b>Total Index</b>	<b>129.1</b>	<b>130.6</b>	<b>141.6</b>	<b>136.3</b>	<b>8.5</b>	<b>2.7</b>	<b>-3.7</b>	<b>4.4</b>
Fuel Surcharge (in Afl.)	0.23	0.26	0.32	0.24	57.5	-7.7	-25.0	-4.7
Water (in Afl. per avg. 22.4 m3)	206.27	217.47	258.60	210.95	28.5	-4.5	-18.4	-3.0
Aruba Gasoline (in Afl. per ltr)	2.02	2.03	2.57	1.86	16.8	-14.0	-27.6	-8.7
Aruba Diesel (in Afl. per ltr)	1.76	1.82	2.17	1.75	24.3	-11.2	-19.1	-3.4
US Gasoline (in \$ per ltr)	0.74	0.81	0.81	0.57	33.2	-28.9	-29.6	-30.3
US Diesel (in \$ per ltr)	0.81	0.90	0.94	0.76	30.1	-13.9	-19.6	-15.3
Crude Oil (in \$)	77.76	87.47	78.39	53.27	53.4	-39.4	-32.0	-39.1

<b>Utilities</b>					<b>YTD</b>	<b>YTD</b>	<b>Monthly</b>	<b>Yearly</b>
	<b>Oct '07</b>	<b>Nov '07</b>	<b>Oct '08</b>	<b>Nov '08</b>	<b>2007</b>	<b>2008</b>	<b>% change</b>	<b>% change</b>
<b>Electricity supplied to Elmar for distribution (in MWh)</b>								
Total average	72,081	66,784	68,105	65,863	741,247	744,851	-3.3	-1.4
<b>Water consumption (in m3)</b>								
Houses	582,622	546,909	514,817	478,516	6,553,239	6,220,727	-7.1	-12.5
Companies	129,030	122,616	112,825	104,522	1,298,165	1,341,439	-7.4	-14.8
Hotels	270,370	232,529	217,067	202,714	2,730,234	2,829,417	-6.6	-12.8
Government	14,194	13,709	13,231	12,562	210,453	153,250	-5.1	-8.4
<b>Total average</b>	<b>996,216</b>	<b>915,763</b>	<b>857,940</b>	<b>798,315</b>	<b>10,792,091</b>	<b>10,544,832</b>	<b>-6.9</b>	<b>-12.8</b>

<b>Foreign Trade in Merchandise (*1,000 Afl.)</b>					<b>YTD<sup>1</sup></b>	<b>YTD</b>	<b>Monthly</b>	<b>Yearly</b>
	<b>Oct '07</b>	<b>Nov '07</b>	<b>Oct '08</b>	<b>Nov '08</b>	<b>2007</b>	<b>2008</b>	<b>% change</b>	<b>% change</b>
<b>Imports of goods by commodity group</b>								
Agriculture products	44,603	49,346	52,585	26,941	459,778	504,035	-48.8	-45.4
Mineral chemical and related products	24,272	25,891	28,028	23,727	257,531	267,829	-15.3	-8.4
Textiles, pearls and precious stones	32,671	44,888	22,238	32,069	242,632	217,417	44.2	-28.6
Metal products, machinery and equipment	50,564	52,478	49,095	39,247	528,462	518,683	-20.1	-25.2
Other transportable goods	36,980	35,288	33,602	28,975	345,018	328,205	-13.8	-17.9
<b>Total Import</b>	<b>189,090</b>	<b>207,890</b>	<b>185,547</b>	<b>150,960</b>	<b>1,833,421</b>	<b>1,836,168</b>	<b>-18.6</b>	<b>-27.4</b>
<b>Exports of goods by commodity group</b>								
Agriculture products	13,641	21,257	14,597	10,740	86,471	105,678	-26.4	-49.5
Mineral chemical and related products	1,336	3,191	2,645	204	5,601	5,731	-92.3	-93.6
Textiles, pearls and precious stones	539	350	84	405	2,496	5,397	380.8	15.9
Metal products, machinery and equipment	1,826	3,257	750	246	18,107	22,275	-67.2	-92.5
Other transportable goods	1,711	2,022	2,804	586	14,324	19,669	-79.1	-71.0
<b>Total Export</b>	<b>19,053</b>	<b>30,077</b>	<b>20,880</b>	<b>12,181</b>	<b>127,000</b>	<b>158,750</b>	<b>-41.7</b>	<b>-59.5</b>

<sup>1)</sup> YTD (Year to date) refers to the period of January 1st of the current year to the month under review.

<sup>2)</sup> Hotels Statistics are based on the reported number of room nights and room revenue

Government Revenues (*1,000 Afl.)					YTD	YTD	Monthly	Yearly
	Oct '07	Nov '07	Oct '08	Nov '08	2007	2008	change	change
<b>Taxes on income and profit</b>	<b>23,765</b>	<b>23,768</b>	<b>26,400</b>	<b>29,388</b>	<b>278,397</b>	<b>327,852</b>	<b>11.3</b>	<b>23.6</b>
Wage tax	19,038	18,651	19,045	17,693	212,582	229,599	-7.1	-5.1
Income tax	-316	163	-872	643	-128	-1,806	173.8	295.6
Profit tax	4,777	4,522	6,122	10,802	61,104	94,665	76.4	138.9
Dividend tax	266	433	2,105	249	4,838	5,395	-88.2	-42.5
<b>Taxes on commodities</b>	<b>24,393</b>	<b>29,139</b>	<b>23,616</b>	<b>24,619</b>	<b>255,689</b>	<b>246,307</b>	<b>4.2</b>	<b>-15.5</b>
Excises on spirits	1,349	2,673	1,252	2,180	15,388	15,630	74.1	-18.4
Excises on beer	2,130	2,240	1,578	1,922	23,211	20,201	21.7	-14.2
Excises on gasoline	4,794	5,412	4,753	4,890	59,343	52,843	2.9	-9.6
Excises on cigarettes	1,780	1,798	814	1,057	12,453	9,762	29.9	-41.2
Other customs	186	362	174	167	2,433	1,882	-4.3	-53.9
Import duties	14,154	16,655	15,045	14,404	142,861	145,989	-4.3	-13.5
<b>Taxes on property</b>	<b>9,693</b>	<b>5,162</b>	<b>3,712</b>	<b>2,923</b>	<b>72,793</b>	<b>77,318</b>	<b>-21.3</b>	<b>-43.4</b>
Long-lease property rights (erfpachtsrechten)	803	632	690	1,218	20,493	13,181	76.5	92.7
Land tax	5,298	3,521	2,060	1,074	18,572	19,826	-47.9	-69.5
Motor vehicle tax (incl. numberplates)	442	156	348	129	15,918	16,003	-63.0	-17.3
Succession tax	47	89	14	58	426	14,973	304.8	-35.3
Transfer tax	3,104	763	600	444	17,383	13,336	-25.9	-41.8
<b>Taxes on services</b>	<b>4,178</b>	<b>4,501</b>	<b>3,804</b>	<b>4,096</b>	<b>54,500</b>	<b>58,719</b>	<b>7.7</b>	<b>-9.0</b>
Gambling licenses	1,528	1,866	1,592	1,733	21,455	23,026	8.9	-7.1
Lodging tax	2,106	2,581	2,106	2,311	30,663	33,810	9.7	-10.4
Stamp duties	544	55	106	52	2,382	1,884	-51.3	-5.8
<b>Turnover tax (BBO)</b>	<b>12,351</b>	<b>13,198</b>	<b>13,187</b>	<b>13,523</b>	<b>118,571</b>	<b>155,781</b>	<b>2.6</b>	<b>2.5</b>
<b>Other tax and nontax revenues</b>	<b>1,756</b>	<b>1,017</b>	<b>1,422</b>	<b>1,112</b>	<b>18,612</b>	<b>14,004</b>	<b>-21.8</b>	<b>9.4</b>
<b>Total tax revenues<sup>2</sup></b>	<b>76,136</b>	<b>76,785</b>	<b>72,141</b>	<b>75,662</b>	<b>798,562</b>	<b>879,982</b>	<b>4.9</b>	<b>-1.5</b>
Tourism					YTD	YTD	Monthly	Yearly
	Oct '07	Nov '07	Oct '08	Nov '08	2007	2008	% change	% change
<b>Cruise tourism</b>								
Cruise Passengers	25,858	67,807	26,068	63,296	404,721	467,141	142.8	-6.7
Cruise calls	17	35	11	32	270	248	190.9	-8.6
Crew members (cruise)	11,501	29,046	10,953	26,806	178,596	197,202	144.7	-7.7
Total number of visitors	514,163	135,658	n.a	n.a	n.a.	n.a.	n.a.	n.a.
<b>Hotel statistics<sup>3</sup></b>								
Room nights rented	158,478	156,985	157,544	151,438	1,806,290	1,870,488	-3.9	-3.5
Occupancy in %	76.3	77.9	69.0	74.1	76.9	76.5	7.4	-4.9
Avg. daily rate in Afl.	255.76	275.37	253.52	287.38	313.46	320.71	13.4	4.4
Revpar in Afl.	118.89	128.56	99.06	114.40	146.91	142.25	15.5	-11.0
Room revenue (in thousands Afl.)	24,681	25,896	22,620	23,364	345,069	194,203	3.3	-9.8
<b>Passenger traffic</b>								
Arrivals	74,667	68,282	70,261	72,165	802,321	879,782	2.7	5.7
Departures	62,182	73,937	66,301	65,659	798,892	868,543	-1.0	-11.2
In transit	3,402	2,906	4,940	5,755	32,760	51,573	16.5	98.0
<b>Landings</b>								
Commercial	1,107	1,238	1,089	1,144	12,007	12,764	5.1	-7.6
Non-commercial	331	359	281	282	3,237	3,827	0.4	-21.4

<sup>1)</sup> YTD (Year to date) refers to the period of January 1st of the current year to the month under review. This period is compared to the same period of the previous year.

<sup>2)</sup> AZV and AOV/AWW are not included.

<sup>3)</sup> Hotels Statistics are based on the reported number of room nights and room revenue