

NATIONAL ACCOUNTS OF ARUBA, 1995-1998

Central Bureau of Statistics
Oranjestad, February 2002

COPYRIGHT RESERVED

Use of the contents of this publication is allowed, provided the source is clearly stated.

WHERE TO ORDER

Central Bureau of Statistics
L.G. Smith Boulevard 160,
Oranjestad,
Aruba,
Dutch Caribbean
Phone: (297) 837433
Fax: (297) 838057
E-mail: cbs@setarnet.aw

Price per copy: Afl. 20.00
For mail orders outside Aruba include
US\$ 5.00 for postage and handling

Payments should be settled in advance.

Preface

The Central Bureau of Statistics Aruba hereby presents the National Accounts of Aruba, 1995, 1996, 1997 and 1998. This publication improves the description of the real sector of the Aruban economy. For the first time, a more comprehensive and systematic description of the Aruban economy is given, based on a large set of economic statistics. The quantitative description focuses on the supply and use tables for each of the years covered, supplemented with detailed descriptions of the various components of the gross domestic product (GDP).

The National Accounts of Aruba has been developed since 1996. At first the whole system of economic statistics had to be put in place before the compilation of the supply and use tables and the sector accounts could start. Currently, the System of National Accounts (SNA) for Aruba is being further developed. Due to the lack of recent economic data, the 1999 and 2000 tables cannot be published yet. The CBS is working on the most appropriate methods to present timely National Accounts. The sector accounts for the years 1995 to 1998 are in the process of being balanced and will be available as soon as possible.

The National Accounts of Aruba follows the guidelines, concepts, definitions, classifications and accounting rules of the System of National Accounts 1993 (1993 SNA). The GDP figures and other major macroeconomic aggregates are calculated according to this international system. The SNA is a comprehensive and consistent set of macroeconomic accounts, prepared under the auspices of the Inter-Secretariat Working Group on National Accounts. This working group comprises the Eurostat, the Organisation for Economic Co-operation and Development (OECD), the International Monetary Fund (IMF), the United Nations Statistical Division (UNSTAT) and regional commissions of the United Nations Secretariat, and the World Bank.

The current publication is the result of the dedication and efforts of the department of National Accounts. A special thanks goes to mrs. drs. E.E. Matos-Pereira, Chief National Accountant, who is internally responsible for this publication. She was assisted by the following persons: mr. H.R.T.C. Helder, BSc, mr. L. da Silva Menezes, BSc, mrs. drs. A.M. van de Steeg, mrs. R.M. Salas – Vrolijk, BSc, mrs. V. J. Ras – Werleman and mrs. F.L. Vrolijk – van der Wal Arneman. The Central Bureau of Statistics takes this opportunity to express its gratitude to all the business enterprises, institutions, and individuals who provided information. We look forward to their continuing support.

With the publication of National Accounts of Aruba, the Central Bureau Statistics complies with its responsibility to generate and disseminate relevant economic information. We sincerely hope this publication will contribute to the improvement of the well being of our people.

Drs. R.A. Lee
Director Central Bureau of Statistics Aruba

Introduction

National Accounts provide a comprehensive description of the complex activities taking place within an economy and between the economy and the rest of the world. In this system - consisting of macroeconomic accounts, balance sheets and tables - economic data are compiled in a mutually consistent way using a set of internationally agreed concepts, definitions, classifications and accounting rules. These concepts, definitions, classifications and accounting rules are extensively elaborated upon in the System of National Accounts 1993 (1993 SNA). Because of the format in which the information is presented and organized, it is the ideal set up for economic analysis, decision-taking and policy-making. The system gives a description of the entire economic process, among other things of the production process of goods and services, the generation of income by production, the distribution and redistribution of income among institutional units, the use of income for the purposes of consumption or saving, capital transactions and the financing process.

In this publication, provisional supply and use tables (SUT) for 1995 up to and including 1998 will be presented. Data presented in this publication are in current prices.

The supply and use tables are part of the central framework of the System of National Accounts. They provide a detailed analysis of the process of production, the use of goods and services and the income generated in that production. The supply and use tables are matrices that record how supplies of different kinds of goods and services originate from domestic industries and imports and how those supplies are allocated between various intermediate or final uses, including exports.

The SUT framework forms an ideal frame for the estimation of gross domestic product (GDP), as it combines the three approaches of measuring GDP. The three methods are discussed in brief:

- The production approach: In this case, GDP is equal to the sum of value added. This implies that GDP at market prices is equal to the total industry output at basic prices *minus* the total industry intermediate consumption in purchasers' prices *plus* taxes less subsidies on products.
- The income approach: GDP at market prices is also equal to the sum of compensation of employees, taxes less subsidies on production and imports, gross mixed incomes, and operating surplus.
- The expenditure approach: The sum of final expenditures in purchasers' prices minus import yields GDP at market prices. The final expenditures are equal to final consumption expenditure, gross capital formation and exports of goods and services.

The following structure will be maintained in this publication. In *Highlights* the main results will be discussed. The *Methodology, Concepts and Definitions* chapter is dedicated to the description of methods, data sources, concepts and definitions used to compile the supply and use tables at current prices. In *Tables* the results are presented in numerous tables. In *Annexes* the classification schemes on which data for the supply and use tables are collected will be discussed.

Table of contents

Preface	1
Introduction	2
Table of contents	3
1. Highlights	5
1.1 GDP and its development	5
1.2 The structure of the Aruban economy	5
1.3 Final expenditures and imports	6
1.4 Share of compensation of employees and operating surplus in gross value added	7
1.5 Comparison with the Central Bank's estimates	8
2. Methodologies, concepts and definitions	9
2.1 Supply table	9
2.1.1 Output of industries	9
2.1.2 Imports of goods and services	10
2.1.3 Adjustment items	11
2.1.3.1 C.i.f. / f.o.b. adjustment on imports	11
2.1.3.2 Adjustment for trade and transport margins	12
2.1.3.3 Adjustment for taxes less subsidies on products	12
2.2 Use table	13
2.2.1 Intermediate consumption of industries	13
2.2.2 Exports of goods and services	13
2.2.3 Final consumption expenditure	14
2.2.4 Gross capital formation	15
2.2.5 Other taxes less subsidies on production	16
2.2.6 Compensation of employees	16
2.2.7 Operating surplus, gross	16
3. Tables	
3.1 Gross domestic product	18
3.2 Output of industries at basic prices	18
3.3 Intermediate consumption of industries at purchasers' prices	19
3.4 Gross value added by industries at basic prices	19
3.5 Household final consumption expenditure	19
3.6 Government final consumption expenditure	20
3.7 Total final consumption expenditure	20
3.8 Private gross fixed capital formation	20
3.9 Public gross fixed capital formation	21
3.10 Changes in inventories	21
3.11 Total gross capital formation	21
3.12 Regular exports of goods and services	22
3.13 Tourism exports of goods and services	22
3.14 Total exports of goods and services	22
3.15 Total imports of goods and services	23
3.16 Compensation of employees	23
3.17 Operating surplus, gross	23
3.18 Import duties	24
3.19 Taxes on imports excluding VAT and duties	24
3.20 Taxes on products, except VAT, import and export taxes	24
3.21 Subsidies on products	25
3.22 Total taxes less subsidies on products	25
3.23 Other taxes less subsidies on production	25

3.24 Supply table (in million Aruban florins), basic prices, 1995	26
3.25 Use table (in million Aruban florins), purchasers' prices, 1995	27
3.26 Supply table (in million Aruban florins), basic prices, 1996	28
3.27 Use table (in million Aruban florins), purchasers' prices, 1996	29
3.28 Supply table (in million Aruban florins), basic prices, 1997	30
3.29 Use table (in million Aruban florins), purchasers' prices, 1997	31
3.30 Supply table (in million Aruban florins), basic prices, 1998	32
3.31 Use table (in million Aruban florins), purchasers' prices, 1998	33
4. Annexes	
4.1 Industrial classification of all economic activities	34
4.2 Provisional central product classification by sections and divisions	37

1. Highlights

1.1 GDP and its development

In 1996, Aruba experienced a nominal economic growth of 4.1%. After achieving an impressive 11.6% rate in 1997, nominal economic growth fell to 6.5% in 1998. The nominal GDP¹ in 1998 amounted to AFL 2,922.94 million. The nominal GDP per capita was AFL 33,046 in 1998.

Table 1.1 Nominal gross domestic product (GDP) and GDP per capita

	1995	1996	1997	1998
Nominal GDP (in AFL million)	2,362.29	2,459.33	2,744.61	2,922.94
Percentage change		4.1	11.6	6.5
GDP per capita	29,601	29,623	31,803	33,046
Percentage change		0.1	7.4	3.9

1.2 The structure of the Aruban economy

The Aruban economy is heavily oriented towards the production of services. The service activities have a share of approximately 90% of the gross value added at basic prices. The agricultural and industrial activities and public utilities account for only 10% of the gross value added at basic prices.

In 1998 the "Trade" industry² occupied the first place, regarding gross value added, with a 15.1% contribution to gross value added (see Graph 1.1). The "Real estate activities" industry³ was the second largest contributor with a contribution of 14.2%. "Public administration, compulsory social security and education"⁴ contributed 13.5% to gross value added in 1998. "Hotels and restaurants" accounted for 10.6% of the gross value added. "Health, other community, social and personal service activities" industry was the next largest contributor with a contribution of 10.6%.

From 1995 until 1998, most of the industries showed positive growth rates (see Graph 1.2). The "Agriculture, hunting, forestry, fishing, mining and quarrying" industry was the only industry with negative growth rates during the entire period. In 1997 most of the industries grew with rates over 10%. In 1998 all industries, with the exception of the "Agriculture, hunting, forestry, fishing, mining and quarrying" industry, continued growing at a lower pace.

In nominal terms, the gross value added of the "Real estate activities" industry grew with AFL 38.94 million in 1996 compared to 1995. The gross value added of the "Public administration, compulsory social security and education" industry grew with AFL 40.99 million in 1997

¹ GDP (gross domestic product) is essentially a production measure. Gross national income (GNI) is a measure of income. GNI is identical with gross national product (GNP). The difference between the numerical values of GNI and GDP is equal to the difference between the total primary incomes receivable by residents from non-residents and the total primary incomes payable by residents to non-residents (i.e. net income from abroad).

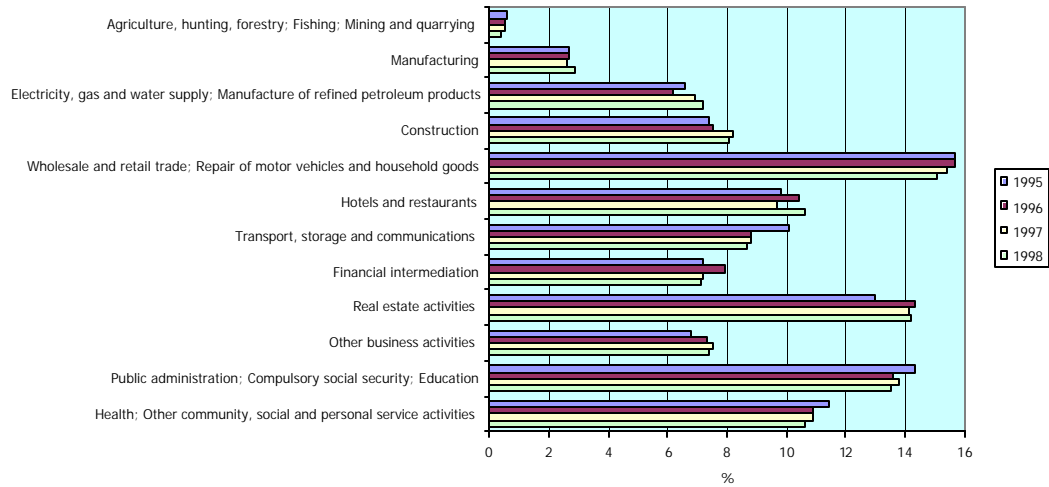
² Wholesale and retail trade; Repair of motor vehicles and household goods

³ The 1993 SNA outlines that all dwellings, those rented and those occupied by owners, produce housing services which fall within the production boundary. So, this industry contains actual enterprises engaged in the renting of dwellings as well as a large number of nominal units, which are house owners supposedly renting their own houses. Hence, the output value consists of the sum of rents paid by tenants and an imputed rent for the houses occupied by owners.

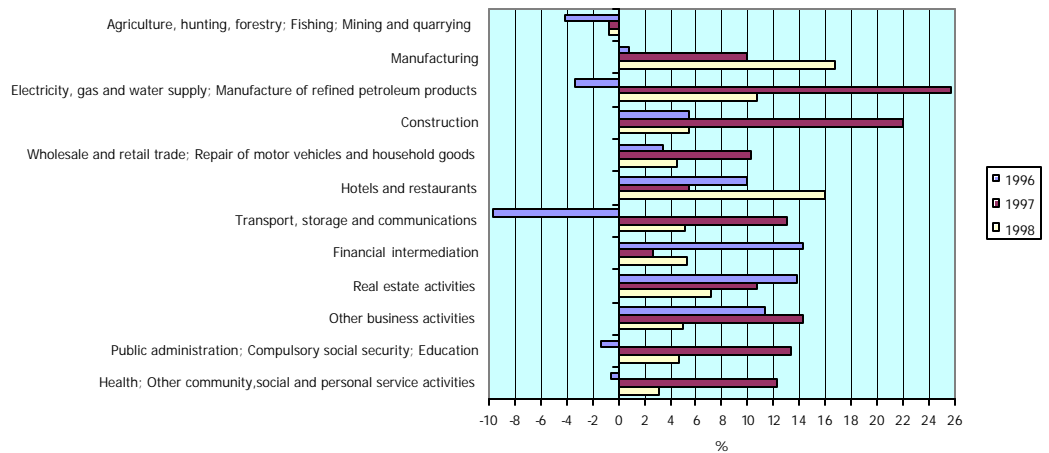
⁴ Note that this industry is not equal to the government sector. The government sector according to SNA consists of the public authorities corresponding to the different ministries, the "Dienst Openbare Werken" (DOW), the "Landsontwikkelingsproject" (LOP), the "Sociale Verzekeringsbank" (SVB) and the private non-profit institutions subsidized by the government. Each public authority (that is each department within the different ministries, DOW, LOP and SVB) has been classified according to the main activity. For instance, the post office has been classified as a postal services activity and is included in the Transport, storage and communications industry.

compared to 1996. The "Hotels and restaurants" industry grew with AFL 39.16 million in 1998 compared to 1997.

Graph 1.1 Share in gross value added by industries at basic prices



Graph 1.2 Rate of growth of total gross value added by industries at basic prices

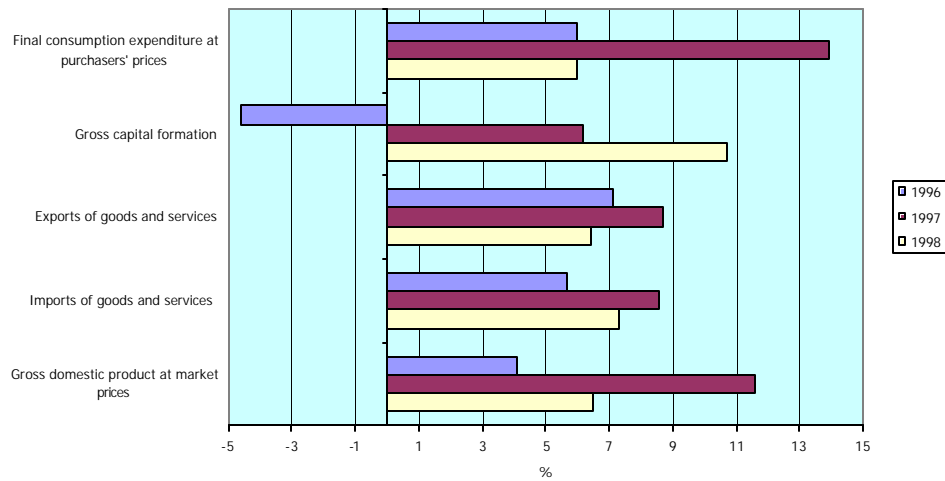


1.3 Final expenditures and imports

In Graph 1.3 the growth rates of components of GDP at market prices are shown. In 1996 and in 1998, final consumption expenditures grew with 6%, whereas in 1997 they grew with 13.9%. The increase in the government final consumption expenditure in 1997 is mainly responsible for this impressive growth. The non-market output of the government sector grew with approximately AFL 130 million in 1997 as a consequence of an increase in the compensation of employees and an increase in the intermediate consumption. Gross capital formation experienced a negative growth of 4.6% in 1996. This is mostly due to a lower construction activity in Coastal Refinery in 1996 compared to 1995. The gross capital formation showed growth rates of 6.2% in 1997 and 10.7% in 1998, which can be greatly attributed to the expansion and renovation of the airport terminal. The exports and the

imports of goods and services experienced positive growth for all years. The tourism exports of goods and services grew from AFL 1,125.06 million in 1995 to AFL 1,398.86 million in 1998. This is equivalent to 48% of the GDP in 1998.

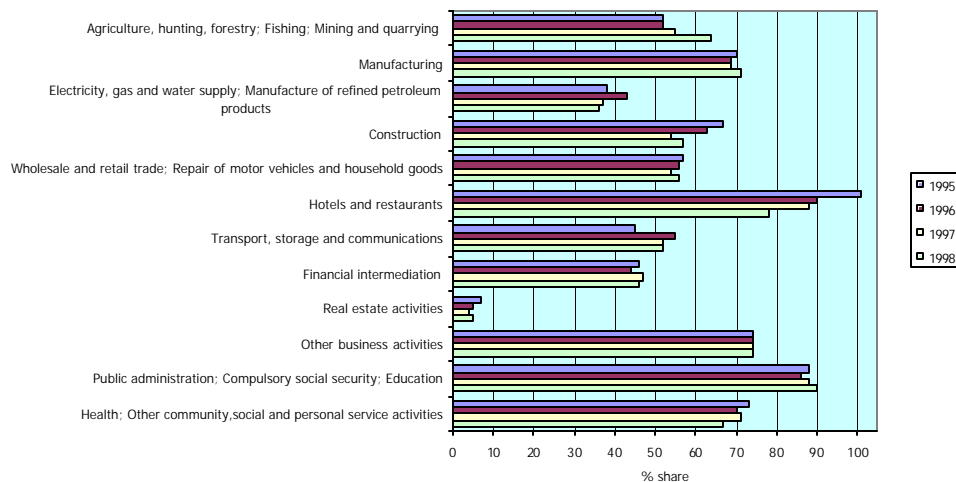
Graph 1.3 Growth rates of components of GDP at market prices



1.4 Share of compensation of employees and operating surplus in gross value added

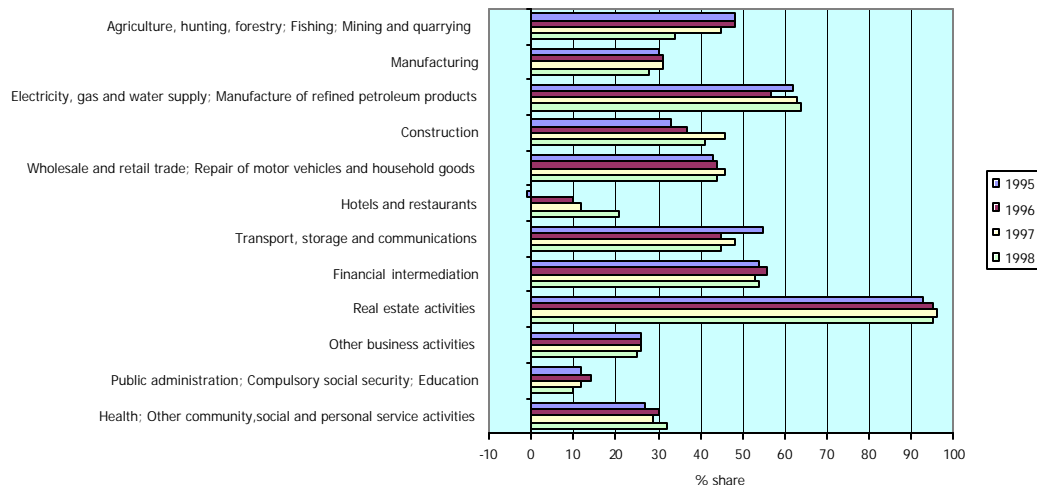
The average share of compensation of employees in gross value added at factor cost⁵ is 61% and the average share of gross operating surplus⁶ is 39% for the period 1995-1998. As can be seen in Graph 1.4 the share of compensation of employees in gross value added at factor cost of the “Hotels and restaurants” industry was more than 100% in 1995. This implies that the share of gross operating surplus was negative for that year. The share of gross operating surplus recovered in the subsequent years and reached 22% in 1998 (see Graph 1.5).

Graph 1.4 Share of compensation of employees in gross value added at factor cost



⁵ Gross domestic product (GDP) can be measured at market prices, at basic prices or at factor cost. Please refer to page 2 for the explanation of GDP at market prices. GDP at basic prices is defined as output valued at basic prices less intermediate consumption valued at purchasers' prices. GDP at factor cost is defined as gross value added at basic prices less "other taxes less subsidies on production".

⁶ Including mixed income

Graph 1.5 Share of gross operating surplus⁷ in gross value added at factor cost

1.5 Comparison with the Central Bank's estimates

As national accounts for Aruba were not yet compiled⁸, the Central Bank of Aruba had to manage with calculations based on a simple macroeconomic model provided by the International Monetary Fund. These calculations are supplemented by and adjusted with fragmentary quantitative information and anecdotal evidence on the developments of the various sectors of the economy, as well as with some indicators on consumption and investment, in order to estimate the main national accounts variables. Consequently, the data should be regarded as approximations having a below standard accuracy, and are, of course, not comparable with the national accounts now published by the Central Bureau of Statistics, which are based on more extensive fact findings, and on different sources of information. For example, the Central Bank of Aruba estimates household consumption via an iterative process, whereby its growth rate is adjusted until it is in accordance with the available data, while the Central Bureau of Statistics (CBS) mainly uses its Income and Expenditure survey. Table 1.2 summarizes the differences in GDP for the period 1995 – 1998 as estimated by the two institutions. It should be noted that for the indicated period the Central Bank's estimate of nominal GDP is on average AFL 207 million higher than the CBS estimate. The percentage change of the CBS estimate of GDP is on average 0.4 percentage points higher than the Central Bank's figures.

Table 1.2 Comparison of nominal GDP (in AFL million) estimates by the Central Bank of Aruba and the Central Bureau of Statistics.

	1995	1996	1997	1998
Nominal GDP as calculated by:				
Central Bank of Aruba	2,524	2,751	2,949	3,094
Central Bureau of Statistics	2,362	2,459	2,745	2,923
Difference	162	292	204	171
Percentage change Nominal GDP as calculated by:				
Central Bank of Aruba		9.0	7.2	4.9
Central Bureau of Statistics		4.1	11.6	6.5
Difference		4.9	-4.4	-1.6

⁷ Including mixed income

⁸ In 1996 CBS constructed proto-type supply and use tables for the year 1994. The results were presented in the publication "National Accounts of Aruba, Provisional estimates for 1994". The presented data were very rough estimates whereby strong assumptions had to be made. Consequently, the 1994 data should not be compared with data in this publication, as they are based on different methodologies.

2. Methodologies, concepts and definitions

This chapter describes the methodologies, concepts and definitions used in the compilation of the supply and use tables.

2.1 SUPPLY TABLE

The supply table gives information about the resources of goods and services. In the rows, the various types of products are presented according to the level of provisional CPC (Central Product Classification) sections. There are two additional rows for adjustment items, one for the c.i.f. / f.o.b. adjustment on imports and one for direct purchases abroad by residents (expenditures abroad)⁹.

In the columns of the supply table different types of information are presented.

1. Output of industries
2. Imports of goods and services
3. Adjustment items:
 - C.i.f. / f.o.b. adjustment on imports
 - Trade and transport margins
 - Taxes less subsidies on products

2.1.1 Output of industries

Definition

Output consists of those goods and services produced within an establishment and supplied to units other than the producing units.

Breakdown

The output of industries is estimated at the levels of the industry classification presented in Annex 1. The correspondence of the industries to ISIC Rev.3 (International Standard Industrial Classification of all Economic Activities, Rev.3) is also presented in Annex 1.

Valuation

The goods and services produced in the economy are measured at basic prices. The basic price is the amount receivable by the producer from the purchaser for a unit of a good or service produced as output minus any tax payable, and plus any subsidy receivable, on that unit as a consequence of its production or sale. It excludes any transport charges invoiced separately by the producer.

Method of estimation

- The output of agricultural, mining, manufactured goods, and construction is estimated by using total revenues from sales.
- The output of goods bought for resale is measured by the trade margin realized on these goods. The trade margin is defined as the difference between the sales of goods bought for resale and the costs of goods bought for resale.
- For market services (except financial intermediation services, insurance services, pension fund services, and owner-occupied housing services) the output is calculated by using total revenues from sales of these services.
- The output of financial intermediation services not explicitly charged is measured by the difference between interests received and interests paid. This indirect measure is known as FISIM (financial intermediation services indirectly measured)¹⁰.

⁹ Expenditures incurred abroad by resident units.

¹⁰ Due to lack of information FISIM could not be allocated to users. As a solution to this problem a nominal industry was introduced consuming the FISIM. The FISIM is used as intermediate consumption by the nominal unit. This nominal unit is the "adjustment for FISIM" industry.

- The output of insurance services is equal to the gross premiums earned *plus* income from investment of the insurance technical reserves *minus* claims due minus changes in actuarial reserves and reserves for with-profits insurance.
- The output of pension fund services is equal to gross contributions earned *plus* income from investment of the reserves of the pension funds *minus* benefits due *minus* changes in actuarial reserves.
- The output of owner-occupied housing services is approximated by market rents for the same kind of housing.
- For non-market services the output is estimated by using the explicit production costs, that is the sum of intermediate consumption, compensation of employees, consumption of fixed capital and other taxes (less subsidies) on production.
- The oil refining activity is registered on a net basis. This implies that a refining fee is calculated and used as the oil refining activity's output.¹¹

Conceptual framework

The conceptual framework used includes 1993 SNA, ISIC Rev.3 and the provisional CPC classification.

Sources of data

The Fiscal Enterprise Statistics are the main source of information for non-financial activities. In the Fiscal Enterprise Statistics annual reports have been analyzed and linked to the System of National Accounts (1993 SNA) concepts and classifications.

The Central Bank of Aruba is the main supplier of data regarding the financial activities, as the Bank is responsible for the supervision of the banking sector, life insurance companies, and company pension funds.

The government accounts provide the information for public authorities. The government sector according to SNA consists of the public authorities corresponding to the different ministries, the "Dienst Openbare Werken" (DOW), the "Landsontwikkelingsproject" (LOP), the "Sociale Verzekeringsbank" (SVB) and the private non-profit institutions subsidized by the government. The data suppliers are the department of Finance, DOW, LOP, and SVB. The annual accounts of these authorities have been analyzed and linked to SNA 1993. Each public authority (that is each department within the different ministries, DOW, LOP, and SVB) has been classified according to an activity classification.

The output of the activity of private households with employed persons and the output of owner-occupied dwellings are estimated from the income and expenditure survey 1998.

2.1.2 Imports of goods and services

Definition

Imports of goods and services consist of purchases, barter, or receipts of gifts or grants, of goods and services by residents from non-residents.

Breakdown

Calculations are made for goods at the level of provisional CPC groups and for services at the level of provisional CPC divisions.

Valuation

The total imports of goods are valued at f.o.b. (free on board) price. The imports of individual goods are valued at c.i.f. (cost, insurance, freight) price. A global c.i.f./f.o.b. adjustment for imports is made in order to derive at the total imports of goods valued at f.o.b. price.

The imports of services are valued at the actual prices agreed upon.

¹¹ The net registration of the oil refining activity is not in compliance with the international guidelines, but is necessary to prevent disclosure of individual data. Accordingly, export of refined oil products and import of crude oil have to be omitted from export and import data. Refinery products delivered to Aruban users are, however, to be registered as import. The estimation of the refining fee is based on the expenses made to refine the oil and maintain the refinery. These expenses are raised with a profit margin.

Method of estimation

Data on imports of goods come from the Foreign Trade Statistics (FTS) that are based on the registration of all documents by the customs department. The goods are reclassified in accordance with the provisional CPC by means of a bridge table. Adjustments are made for commodities that are not included in the FTS: parcel post, mineral products¹², repair on goods¹³ and goods used by Aruban offices abroad.

Figures on services are obtained from the balance of payments compiled by the Central Bank of Aruba. Adjustments are incorporated for Aruban offices abroad, for construction services and for direct purchases abroad by residents.

Conceptual framework

The conceptual framework used includes 1993 SNA, the provisional CPC classification, and the fifth version of the Balance of Payments manual.

Sources of data

Foreign Trade Statistics, based on information from the customs department, are the data supplier of imports of goods. The balance of payments compiled by the Central Bank of Aruba is the source of information for the imports of services.

2.1.3 Adjustment items

2.1.3.1 C.i.f. / f.o.b. adjustment on imports

Definition

In the supply table total imports are valued at f.o.b. (free on board) price. However, imports of individual products are valued at c.i.f. (cost, insurance, freight) prices. The imports of products valued at c.i.f. prices include the value of imports of products valued f.o.b., transport services and insurance services. The f.o.b. price can be considered as the purchaser's price that would be paid by an importer taking delivery of the goods after it has been loaded on to his own carrier, or other carrier, at the exporter's frontier after payment of any export taxes or the receipt of any tax rebates. A global c.i.f. / f.o.b. adjustment on imports is added in order to reconcile the different valuation used for total imports and the imports of individual products.

Breakdown

An adjustment value is introduced separately for transport services and insurance services.

Method of estimation

The c.i.f. / f.o.b. adjustment is estimated to be approximately seven percent of imports at c.i.f. price for the free zone and fourteen percent of imports at c.i.f. price for the rest of the economy. Import documents registered by the customs department have been analyzed in order to derive at these percentages.

Conceptual framework

The conceptual framework used includes 1993 SNA.

Sources of data

Foreign Trade Statistics, based on information from the customs department, are the data supplier.

¹² As the oil refining activity is registered on a net basis, the exports of refined petroleum products and the imports of crude oil have to be omitted from the export and import data. Refinery products delivered to Aruban users are, however, to be registered as import.

¹³ The value recorded reflects the value of the repairs rather than the gross value of the goods before and after repairs. The assumption is that those repairs are performed on investment goods.

2.1.3.2 Adjustment for trade and transport margins

Definition

Trade and transport margins are elements separating purchaser values of commodities from basic values. Since the output of domestic industries are valued at basic prices and the imports of individual commodities are valued at c.i.f. price, the adjustment for trade and transport services is necessary in order to derive at the supply of commodities at purchasers' prices.

Breakdown

Calculations are done at the level of provisional CPC divisions.

Method of estimation

The trade margins – principally produced by the wholesale and retail trade activities – are divided over the goods. The trade margins are computed, depending on intermediate and final demand categories. Estimates of the trade margin per product take into account average trade margin rates and the intermediate and final demand categories. No transport margins are estimated as we assume that most companies allow for transport costs in their annual reports.

Conceptual framework

The conceptual framework used includes 1993 SNA.

Sources of data

The adjustment for trade margins is estimated during the balancing process of the supply and use tables.

2.1.3.3 Adjustment for taxes less subsidies on products

Definition

Taxes on products are taxes that are payable per unit of some product when it is produced, delivered, sold, transferred or otherwise disposed of by its producer. Subsidies on products are subsidies that are payable per unit of a product when it is produced, delivered, sold, transferred or otherwise disposed of by its producer. Subsidies on products can be considered as negative taxes on products. Taxes less subsidies on products are elements between purchaser values and basic values.

Breakdown

Calculations are done at the level of provisional CPC groups.

Method of estimation

The taxes (less subsidies) on products, received (paid) by the government and reported in the government annual reports, are classified in accordance with the provisional CPC classification. For the import duties the information from the annual reports is combined with information from the foreign trade statistics to derive at the breakdown per product.

Conceptual framework

The conceptual framework used includes 1993 SNA.

Sources of data

The government annual reports are the data supplier of taxes less subsidies on products. The foreign trade statistics are used to derive at the breakdown of import duties per commodity.

2.2 USE TABLE

The use table provides information on the uses of goods and services, and also on cost structures of the industries. The use table can be divided into the use of goods and services sub matrix and the value added sub matrix.

The use of goods and services sub matrix shows the various types of products at the level of provisional CPC sections in the rows. There is one row for the adjustment item direct purchases abroad by residents (expenditures abroad). The use table exhibits in the columns the following information:

1. Intermediate consumption of industries
2. Exports of goods and services
3. Final consumption expenditure
4. Gross capital formation

The value added sub matrix consists of the following items:

1. Other taxes less other subsidies on production
2. Compensation of employees
3. Operating surplus, gross¹⁴

2.2.1 Intermediate consumption of industries

Definition

Intermediate consumption consists of the value of the goods and services which are used up in the production process, excluding fixed assets.

Breakdown

The intermediate consumption of industries is estimated at the levels of the industry classification presented in Annex 1.

Valuation

The intermediate consumption is valued at purchasers' prices. The purchaser's price is the amount paid by the purchaser, excluding any deductible value added type taxes (VAT) or similar deductible tax, in order to take delivery of a unit of a good or service at the time and place required by the purchaser. The purchaser's price of a good includes any transport charges paid separately by the purchaser to take delivery at the required time and place.

Method of estimation

The intermediate consumption is estimated by using the purchases of goods and services by industries, excluding fixed assets.

Conceptual framework

The conceptual framework used includes 1993 SNA, ISIC Rev. 3 and the provisional CPC classification.

Sources of data

Please refer to the sources of data mentioned in paragraph 2.1.1.

2.2.2 Exports of goods and services

Definition

Exports of goods and services consist of purchases, barter, or receipts of gifts or grants, of goods and services by non-residents from residents.

¹⁴ Mixed income is also included in this item.

Breakdown

Calculations are done for goods at the level of provisional CPC groups and for services at the level of provisional CPC divisions.

Valuation

The exports of goods and services are valued at purchasers' prices.

Method of estimation

Data on exports of goods are based on the Foreign Trade Statistics (FTS) that are based on the registration of all documents by the customs department. The goods are reclassified in accordance with the provisional CPC by means of a bridge table. Adjustments are made for commodities that are not included in the FTS: parcel post, mineral products, repair on goods and goods used by Dutch marines.

Figures on services (with the exception of tourism expenditures) are obtained from the balance of payments compiled by the Central Bank of Aruba. The Central Bureau of Statistics estimates the refining fee¹⁵.

The tourism expenditures on goods and services are based on the tourism expenditure survey of the Central Bureau of Statistics.

Conceptual framework

The conceptual framework used includes 1993 SNA, the provisional CPC classification and the fifth version of the Balance of Payments manual.

Sources of data

Foreign Trade Statistics, based on information from the customs department, are the data supplier of exports of goods. The balance of payments compiled by the Central Bank of Aruba is the source of information for the exports of services (with the exception of tourism expenditures). The tourism expenditures on goods and services are based on the tourism expenditure survey of the Central Bureau of Statistics.

2.2.3 Final consumption expenditure

Definition

Final consumption expenditure consists of the expenditure, including imputed expenditure, incurred by resident households, resident non-profit institutions serving households and general government on consumption goods and services.

Breakdown

Calculations are made at the level of the provisional CPC groups.

Valuation

The final consumption expenditure is valued at purchasers' prices.

Method of estimation

The final consumption expenditures are split up into household final consumption expenditure and government final consumption expenditure.

The projection of the household final consumption expenditure is mainly based on the Income and Expenditure survey 1998. The Income and Expenditure survey 1998 classifies the expenditure categories according to a national product classification based on the COICOP (Classification of Individual Consumption by Purpose). By means of a bridge table the expenditures are linked to SNA concepts and classifications. The following issues have been taken into account while interpolating the data for the years 1995 through 1997: population correction, inflation correction, income effect, high earners' effect and correction for commodities underrated in the Income and Expenditure survey 1998.

¹⁵ The estimation of the refining fee is based on the expenses made to refine the oil and maintain the refinery. These expenses are raised with a profit margin.

The government final consumption expenditure consists of the purchases of goods and services bought for redistribution and the non-market output.

Conceptual framework

The conceptual framework used includes 1993 SNA and the provisional CPC classification.

Sources of data

The Income and Expenditure survey 1998 is the main supplier of information regarding the household final consumption expenditure. The annual reports of the government¹⁶ are the sources of information for the estimation of the government final consumption expenditure.

2.2.4 Gross capital formation

Definition

Gross capital formation is measured by the total value of the gross fixed capital formation, changes in inventories and acquisitions less disposals of valuables. Gross fixed capital formation is equal to the total value of a producer's acquisitions, less disposals, of fixed assets plus certain additions to the value of non-produced assets realized by the productive activity of institutional units.

Breakdown

The estimates of gross capital formation are computed at the level of the provisional CPC groups.

Valuation

The gross capital formation is valued at purchasers' prices.

Method of estimation

The investment schedules in the annual reports of the government are analyzed and linked to SNA concepts and classifications in order to estimate the public gross fixed capital formation. The computation of private gross fixed capital formation in machinery and equipment is based on the foreign trade statistics as the majority of machinery and equipment is imported. The estimation of private gross fixed capital formation in dwellings, buildings and other structures is based on information with regard to constructed area (square metres) and average construction price per square metre.

The changes in inventories are estimated endogenously. The changes in inventories of the free zone are estimated as the free zone imports plus wholesale margins on the free zone goods minus the free zone exports. The changes in inventories of the rest of the economy are estimated using the following information: the total supply of goods minus the free zone supply of goods and a ratio of stock to sales.

Conceptual framework

The conceptual framework used includes 1993 SNA and the provisional CPC classification.

Sources of data

The annual reports of the government are used to calculate the public gross fixed capital formation. The estimation of the private gross fixed capital formation is based on the foreign trade statistics, the data of the Department of Technical Inspections on electrical approvals, the data from the Insurance Association Aruba on the average construction price of dwellings and a survey on the construction of other buildings and structures.

¹⁶ According to SNA the government consists of the administrative government (the public authorities corresponding to the ministries, the "Dienst Openbare Werken" (DOW), the "Landontwikkelingproject" (LOP)), the "Sociale Verzekeringsbank" (SVB), and the private non-profit institutions subsidized by the government.

2.2.5 Other taxes less subsidies on production

Definition

Taxes (subsidies) on production consist of all taxes (subsidies) except taxes (subsidies) on products that enterprises incur (receive) as a result of engaging in production.

Breakdown

The other taxes less subsidies on production are estimated at the levels of the industry classification presented in Annex 1.

Method of estimation

The other taxes less subsidies on production are derived from the government accounts. Depending on the type of tax, amounts are allocated to specific industries or allocated proportional to the industries by using the ratio of compensation of employees of one industry to the total compensation of employees.

Conceptual framework

The conceptual framework used includes 1993 SNA and ISIC Rev.3.

Sources of data

The government annual reports provide information on taxes less subsidies on production.

2.2.6 Compensation of employees

Definition

Compensation of employees is defined as the total remuneration, in cash or kind, payable by an enterprise to an employee in return for work done by the latter during the accounting period.

Breakdown

The compensation of employees is estimated at the levels of industry classification presented in Annex 1.

Method of estimation

The components of compensation of employees over which taxes are levied are included in the summary wage statements. Adjustments are made for those components that are not included. These adjustments are based on a comparison between the summary wage statements and business financial statements.

Conceptual framework

The conceptual framework used includes 1993 SNA and ISIC Rev.3.

Sources of data

Please refer to the sources of data mentioned in paragraph 2.1.1.

2.2.7 Operating surplus, gross

Definition

Operating surplus/mixed income is a measure of the surplus accruing from the production process before deducting any explicit or implicit interest charges, rents or other property incomes payable on the financial assets, land or other tangible non-produced assets required to carry on the production.

Breakdown

The gross operating surplus (including mixed income) is estimated at the levels of the industry classification presented in Annex 1.

Method of estimation

Data in business financial statements are used in order to estimate this item.

Conceptual framework

The conceptual framework used includes 1993 SNA and ISIC Rev.3.

Sources of data

Please refer to the sources of data mentioned in paragraph 2.1.1.

3. Tables

3.1 Gross domestic product

	1995	1996	1997	1998
	<i>in AFL. Million</i>			
1. Production approach				
Output at basic prices	4,228.59	4,479.66	5,003.37	5,203.97
Less: Intermediate consumption at purchasers' prices	2,061.59	2,229.00	2,479.73	2,510.82
Taxes less subsidies on products	195.29	208.67	220.97	229.79
Gross domestic product at market prices	2,362.29	2,459.33	2,744.61	2,922.94
2. Expenditure approach				
Final consumption expenditure at purchasers' prices	1,577.60	1,671.96	1,903.55	2,018.67
Gross capital formation	690.65	658.92	699.94	774.83
Exports of goods and services	2,168.39	2,321.34	2,522.79	2,684.02
Less: Imports of goods and services	2,074.35	2,192.89	2,381.67	2,554.58
Gross domestic product at market prices	2,362.29	2,459.33	2,744.61	2,922.94
3. Income approach				
Compensation of employees	1,332.49	1,362.93	1,491.32	1,570.90
Taxes less subsidies on production and imports	247.86	240.21	255.48	270.22
Operating surplus gross	781.94	856.19	997.81	1,081.82
Gross domestic product at market prices	2,362.29	2,459.33	2,744.61	2,922.94
4. Percentage change		4.1	11.6	6.5
5. Midyear population	79,804	83,021	86,300	88,451
6. Gross domestic product per capita	29,601	29,623	31,803	33,046

3.2 Output of industries at basic prices

Industries	1995	1996	1997	1998
	<i>in AFL. Million</i>			
Agriculture, hunting, forestry; Fishing; Mining and quarrying	31.33	27.03	22.98	26.69
Manufacturing ¹⁷	170.75	173.26	177.71	203.63
Electricity, gas and water supply; Manufacture of refined petroleum products ¹⁸	432.02	518.81	597.43	646.92
Construction	426.87	432.38	507.89	536.62
Wholesale and retail trade; Repair of motor vehicles and household goods	506.30	535.45	586.04	617.13
Hotels and restaurants	651.13	684.44	712.67	727.93
Transport, storage and communications	457.98	459.59	514.47	517.01
Financial intermediation	214.78	241.56	243.79	261.65
Real estate activities	294.94	333.81	373.06	394.94
Other business activities	228.08	251.94	294.05	300.04
Public administration; Compulsory social security; Education	427.69	418.78	522.91	512.47
Health; Other community, social and personal service activities ¹⁹	386.72	402.61	450.37	458.94
Adjustment for fisim				
Total	4,228.59	4,479.66	5,003.37	5,203.97

¹⁷ Excluding manufacture of refined petroleum products

¹⁸ The oil refining activity is registered on a net basis. This implies that a refining fee is calculated and used as the oil refining activity's output. Export of refined oil products and import of crude oil have to be omitted from export and import data. Refinery products delivered to Aruban users are, however, to be registered as import.

¹⁹ Including private households with employed persons

3.3 Intermediate consumption of industries at purchasers' prices

Industries	1995	1996	1997	1998
	<i>in AFL. Million</i>			
Agriculture, hunting, forestry; Fishing; Mining and quarrying	19.37	15.57	11.60	15.39
Manufacturing	111.23	113.25	111.75	126.59
Electricity, gas and water supply; Manufacture of refined petroleum products	288.26	379.98	422.97	453.84
Construction	266.18	263.02	301.31	318.95
Wholesale and retail trade; Repair of motor vehicles and household goods	165.20	182.30	196.99	210.53
Hotels and restaurants	439.28	451.46	466.98	443.08
Transport, storage and communications	239.68	262.47	291.60	282.71
Financial intermediation	59.23	63.76	61.25	69.47
Real estate activities	12.24	12.17	17.06	13.31
Other business activities	80.04	86.98	105.55	102.08
Public administration; Compulsory social security; Education	116.78	112.10	175.24	148.43
Health; Other community, social and personal service activities	139.47	156.93	174.76	174.38
Adjustment for fisim	124.63	129.01	142.67	152.06
Total	2,061.59	2,229.00	2,479.73	2,510.82

3.4 Gross value added by industries at basic prices

Industries	1995	1996	1997	1998
	<i>in AFL. Million</i>			
Agriculture, hunting, forestry; Fishing; Mining and quarrying	11.96	11.46	11.38	11.30
Manufacturing	59.52	60.01	65.96	77.04
Electricity, gas and water supply; Manufacture of refined petroleum products	143.76	138.83	174.46	193.08
Construction	160.69	169.36	206.58	217.67
Wholesale and retail trade; Repair of motor vehicles and household goods	341.10	353.15	389.05	406.60
Hotels and restaurants	211.85	232.98	245.69	284.85
Transport, storage and communications	218.30	197.12	222.87	234.30
Financial intermediation	155.55	177.80	182.54	192.18
Real estate activities	282.70	321.64	356.00	381.63
Other business activities	148.04	164.96	188.50	197.96
Public administration; Compulsory social security; Education	310.91	306.68	347.67	364.04
Health; Other community, social and personal service activities	247.25	245.68	275.61	284.56
Adjustment for fisim	-124.63	-129.01	-142.67	-152.06
Total	2,167.00	2,250.66	2,523.64	2,693.15

3.5 Household final consumption expenditure

Commodities (by provisional CPC sections)	1995	1996	1997	1998
	<i>in AFL million</i>			
Agriculture, forestry and fishery products	14.08	15.47	16.81	19.99
Ores and minerals; Electricity, gas and water	77.06	80.55	89.38	93.11
Food products, beverages and tobacco; Textiles, apparel and leather products	196.33	211.53	225.48	254.83
Other transportable goods, except metal products, machinery and equipment	131.01	140.21	149.68	167.05
Metal products, machinery and equipment	84.52	90.94	96.96	109.22
Construction work and constructions; Land	11.64	12.80	14.05	15.04
Trade services; Hotel and restaurant services	43.76	47.63	52.31	56.45
Transport, storage and communications services	58.00	58.96	74.33	71.39
Business services; Agricultural, mining and manufacturing services	298.29	330.64	353.39	402.62
Community, social and personal services	159.22	148.34	150.83	169.61
Expenditures abroad	61.74	75.04	77.04	80.92
Total	1,135.65	1,212.11	1,300.26	1,440.23

3.6 Government final consumption expenditure

Commodities (by provisional CPC sections)	1995	1996	1997	1998
	<i>in AFL million</i>			
Agriculture, forestry and fishery products				
Ores and minerals; Electricity, gas and water				
Food products, beverages and tobacco; Textiles, apparel and leather products				
Other transportable goods, except metal products, machinery and equipment				
Metal products, machinery and equipment	0.31	0.32	0.78	0.79
Construction work and constructions; Land		0.34		
Trade services; Hotel and restaurant services	16.44	18.92	21.24	22.93
Transport, storage and communications services	2.57	0.81	4.30	8.81
Business services; Agricultural, mining and manufacturing services	1.76	1.98	3.32	3.58
Community, social and personal services	420.15	437.18	573.65	542.33
Expenditures abroad	0.72	0.30		
Total	441.95	459.85	603.29	578.44

3.7 Total final consumption expenditure

Commodities (by provisional CPC sections)	1995	1996	1997	1998
	<i>in AFL million</i>			
Agriculture, forestry and fishery products	14.08	15.47	16.81	19.99
Ores and minerals; Electricity, gas and water	77.06	80.55	89.38	93.11
Food products, beverages and tobacco; Textiles, apparel and leather products	196.33	211.53	225.48	254.83
Other transportable goods, except metal products, machinery and equipment	131.01	140.21	149.68	167.05
Metal products, machinery and equipment	84.83	91.26	97.74	110.01
Construction work and constructions; Land	11.64	13.14	14.05	15.04
Trade services; Hotel and restaurant services	60.20	66.55	73.55	79.38
Transport, storage and communications services	60.57	59.77	78.63	80.20
Business services; Agricultural, mining and manufacturing services	300.05	332.62	356.71	406.20
Community, social and personal services	579.37	585.52	724.48	711.94
Expenditures abroad	62.46	75.34	77.04	80.92
Total	1,577.60	1,671.96	1,903.55	2,018.67

3.8 Private gross fixed capital formation

Commodities (by provisional CPC sections)	1995	1996	1997	1998
	<i>in AFL million</i>			
Agriculture, forestry and fishery products	0.62	0.39	0.38	0.50
Ores and minerals; Electricity, gas and water				
Food products, beverages and tobacco; Textiles, apparel and leather products	0.01	0.01		0.01
Other transportable goods, except metal products, machinery and equipment	21.03	16.92	27.96	31.03
Metal products, machinery and equipment	216.33	216.90	193.91	210.78
Construction work and constructions; Land	375.48	355.16	408.79	453.77
Trade services; Hotel and restaurant services				
Transport, storage and communications services				
Business services; Agricultural, mining and manufacturing services				
Community, social and personal services				
Expenditures abroad				
Total	613.47	589.38	631.04	696.09

3.9 Public gross fixed capital formation

Commodities (by provisional CPC sections)	1995	1996	1997	1998
		<i>in AFL million</i>		
Agriculture, forestry and fishery products	0.01	0.03		
Ores and minerals; Electricity, gas and water				
Food products, beverages and tobacco; Textiles, apparel and leather products				
Other transportable goods, except metal products, machinery and equipment	1.08	1.51	0.41	4.08
Metal products, machinery and equipment	31.20	8.22	11.78	2.43
Construction work and constructions; Land	22.02	39.76	52.62	32.65
Trade services; Hotel and restaurant services				
Transport, storage and communications services	0.09	0.15	0.05	0.04
Business services; Agricultural, mining and manufacturing services	0.43	7.40	1.46	0.72
Community, social and personal services			-0.01	-0.26
Expenditures abroad				
Total	54.83	57.07	66.31	39.66

3.10 Changes in inventories

Commodities (by provisional CPC sections)	1995	1996	1997	1998
		<i>in AFL million</i>		
Agriculture, forestry and fishery products	0.10	0.19	0.34	-0.19
Ores and minerals; Electricity, gas and water	-0.41	-0.32	0.11	0.03
Food products, beverages and tobacco; Textiles, apparel and leather products	12.06	-2.46	-6.65	32.40
Other transportable goods, except metal products, machinery and equipment	4.78	7.20	7.32	1.24
Metal products, machinery and equipment	5.82	7.86	1.47	5.60
Construction work and constructions; Land				
Trade services; Hotel and restaurant services				
Transport, storage and communications services				
Business services; Agricultural, mining and manufacturing services				
Community, social and personal services				
Expenditures abroad				
Total	22.35	12.47	2.59	39.08

3.11 Total gross capital formation

Commodities (by provisional CPC sections)	1995	1996	1997	1998
		<i>in AFL million</i>		
Agriculture, forestry and fishery products	0.73	0.61	0.72	0.31
Ores and minerals; Electricity, gas and water	-0.41	-0.32	0.11	0.03
Food products, beverages and tobacco; Textiles, apparel and leather products	12.07	-2.45	-6.65	32.41
Other transportable goods, except metal products, machinery and equipment	26.89	25.63	35.69	36.35
Metal products, machinery and equipment	253.35	232.98	207.16	218.81
Construction work and constructions; Land	397.50	394.92	461.41	486.42
Trade services; Hotel and restaurant services				
Transport, storage and communications services	0.09	0.15	0.05	0.04
Business services; Agricultural, mining and manufacturing services	0.43	7.40	1.46	0.72
Community, social and personal services			-0.01	-0.26
Expenditures abroad				
Total	690.65	658.92	699.94	774.83

3.12 Regular exports of goods and services

Commodities (by provisional CPC sections)	1995	1996	1997	1998
		<i>in AFL million</i>		
Agriculture, forestry and fishery products	51.41	31.61	36.02	9.64
Ores and minerals; Electricity, gas and water			0.09	
Food products, beverages and tobacco; Textiles, apparel and leather products	492.56	492.74	557.73	526.53
Other transportable goods, except metal products, machinery and equipment	24.71	22.47	28.77	60.41
Metal products, machinery and equipment	53.85	45.98	64.28	60.49
Construction work and constructions; Land	20.40	10.60	11.20	14.20
Trade services; Hotel and restaurant services				
Transport, storage and communications services	144.14	173.80	188.26	177.49
Business services; Agricultural, mining and manufacturing services	181.41	233.25	287.06	364.10
Community, social and personal services	74.85	84.98	94.10	72.30
Expenditures abroad				
Total	1,043.33	1,095.43	1,267.51	1,285.16

3.13 Tourism exports of goods and services

Commodities (by provisional CPC sections)	1995	1996	1997	1998
		<i>in AFL million</i>		
Agriculture, forestry and fishery products	2.15	2.36	2.39	2.93
Ores and minerals; Electricity, gas and water				
Food products, beverages and tobacco; Textiles, apparel and leather products	82.68	89.82	103.41	133.28
Other transportable goods, except metal products, machinery and equipment	133.23	144.69	162.53	210.51
Metal products, machinery and equipment				
Construction work and constructions; Land				
Trade services; Hotel and restaurant services	536.19	585.40	592.98	620.92
Transport, storage and communications services	123.07	148.21	155.95	124.98
Business services; Agricultural, mining and manufacturing services	36.19	67.15	48.59	55.14
Community, social and personal services	211.55	188.28	189.43	251.10
Expenditures abroad				
Total	1,125.06	1,225.91	1,255.28	1,398.86

3.14 Total exports of goods and services

Commodities (by provisional CPC sections)	1995	1996	1997	1998
		<i>in AFL million</i>		
Agriculture, forestry and fishery products	53.56	33.97	38.41	12.57
Ores and minerals; Electricity, gas and water			0.09	
Food products, beverages and tobacco; Textiles, apparel and leather products	575.24	582.56	661.14	659.81
Other transportable goods, except metal products, machinery and equipment	157.94	167.16	191.30	270.92
Metal products, machinery and equipment	53.85	45.98	64.28	60.49
Construction work and constructions; Land	20.40	10.60	11.20	14.20
Trade services; Hotel and restaurant services	536.19	585.40	592.98	620.92
Transport, storage and communications services	267.21	322.01	344.21	302.47
Business services; Agricultural, mining and manufacturing services	217.60	300.40	335.65	419.24
Community, social and personal services	286.40	273.26	283.53	323.40
Expenditures abroad				
Total	2,168.39	2,321.34	2,522.79	2,684.02

3.15 Total imports of goods and services

Commodities (by provisional CPC sections)	1995	1996	1997	1998
	<i>in AFL million</i>			
Agriculture, forestry and fishery products	73.14	59.28	58.74	44.38
Ores and minerals; Electricity, gas and water	46.48	71.20	75.33	58.62
Food products, beverages and tobacco; Textiles, apparel and leather products	776.57	788.32	840.49	870.86
Other transportable goods, except metal products, machinery and equipment	333.29	353.47	401.06	444.06
Metal products, machinery and equipment	397.17	423.64	442.30	501.46
Construction work and constructions; Land	42.60	18.45	21.25	42.00
Trade services; Hotel and restaurant services				
Transport, storage and communications services	199.02	221.72	262.92	248.34
Business services; Agricultural, mining and manufacturing services	129.90	145.68	188.85	197.14
Community, social and personal services	82.54	90.96	77.60	137.30
C.i.f./f.o.b. adjustment on imports	-182.76	-194.23	-206.97	-220.78
Expenditures abroad	176.40	214.40	220.10	231.20
Total	2,074.35	2,192.89	2,381.67	2,554.58

3.16 Compensation of employees

Industries	1995	1996	1997	1998
	<i>in AFL. Million</i>			
Agriculture, hunting, forestry; Fishing; Mining and quarrying	6.13	5.95	6.26	7.21
Manufacturing	41.42	41.11	44.93	53.94
Electricity, gas and water supply; Manufacture of refined petroleum products	54.85	59.07	65.15	69.28
Construction	107.61	105.62	110.54	123.14
Wholesale and retail trade; Repair of motor vehicles and household goods	187.18	191.97	205.22	220.48
Hotels and restaurants	211.36	207.58	215.38	220.09
Transport, storage and communications	97.28	108.17	115.34	121.66
Financial intermediation	70.83	77.95	84.65	87.82
Real estate activities	19.14	16.67	15.19	17.81
Other business activities	107.34	120.13	137.56	144.49
Public administration; Compulsory social security; Education	274.19	264.81	306.61	326.78
Health; Other community, social and personal service activities	155.16	163.90	184.49	178.20
Adjustment for fisim				
Total	1,332.49	1,362.93	1,491.32	1,570.90

3.17 Operating surplus, gross

Industries	1995	1996	1997	1998
	<i>in AFL. Million</i>			
Agriculture, hunting, forestry; Fishing; Mining and quarrying	5.77	5.44	5.05	4.00
Manufacturing	17.71	18.43	20.59	22.48
Electricity, gas and water supply; Manufacture of refined petroleum products	88.38	79.08	108.64	122.99
Construction	52.03	62.50	94.91	93.10
Wholesale and retail trade; Repair of motor vehicles and household goods	143.54	151.15	174.57	176.50
Hotels and restaurants	-1.57	22.97	28.11	62.21
Transport, storage and communications	120.13	87.76	106.43	111.32
Financial intermediation	84.03	98.93	97.01	103.35
Real estate activities	263.38	304.77	340.66	363.62
Other business activities	37.94	41.92	48.28	50.61
Public administration; Compulsory social security; Education	36.49	41.65	40.83	37.08
Health; Other community, social and personal service activities	58.74	70.60	75.40	86.62
Adjustment for fisim	-124.63	-129.01	-142.67	-152.06
Total	781.94	856.19	997.81	1,081.82

3.18 Import duties

Commodities (by provisional CPC sections)	1995	1996	1997	1998
	<i>in AFL million</i>			
Agriculture, forestry and fishery products	1.24	1.53	1.58	1.55
Ores and minerals; Electricity, gas and water	0.16	0.19	0.34	0.32
Food products, beverages and tobacco; Textiles, apparel and leather products	20.26	22.63	19.39	18.81
Other transportable goods, except metal products, machinery and equipment	17.07	18.83	23.84	22.94
Metal products, machinery and equipment	38.91	44.27	45.97	44.80
Construction work and constructions; Land				
Trade services; Hotel and restaurant services				
Transport, storage and communications services				
Business services; Agricultural, mining and manufacturing services				
Community, social and personal services				
Expenditures abroad				
Total	77.64	87.45	91.12	88.42

3.19 Taxes on imports excluding VAT and duties²⁰

Commodities (by provisional CPC sections)	1995	1996	1997	1998
	<i>in AFL million</i>			
Agriculture, forestry and fishery products				
Ores and minerals; Electricity, gas and water				
Food products, beverages and tobacco; Textiles, apparel and leather products	38.74	37.58	40.81	40.64
Other transportable goods, except metal products, machinery and equipment	52.07	54.76	59.90	58.46
Metal products, machinery and equipment				
Construction work and constructions; Land				
Trade services; Hotel and restaurant services				
Transport, storage and communications services				
Business services; Agricultural, mining and manufacturing services				
Community, social and personal services				
Expenditures abroad				
Total	90.81	92.34	100.71	99.10

3.20 Taxes on products, except VAT, import and export taxes

Commodities (by provisional CPC sections)	1995	1996	1997	1998
	<i>in AFL million</i>			
Agriculture, forestry and fishery products				
Ores and minerals; Electricity, gas and water				
Food products, beverages and tobacco; Textiles, apparel and leather products				
Other transportable goods, except metal products, machinery and equipment				
Metal products, machinery and equipment				
Construction work and constructions; Land				
Trade services; Hotel and restaurant services	12.32	12.08	11.34	18.75
Transport, storage and communications services				
Business services; Agricultural, mining and manufacturing services	18.69	20.99	22.41	28.99
Community, social and personal services				
Expenditures abroad				
Total	31.01	33.07	33.75	47.74

²⁰ VAT: value added type taxes

3.21 Subsidies on products

Commodities (by provisional CPC sections)	1995	1996	1997	1998
	<i>in AFL million</i>			
Agriculture, forestry and fishery products			-0.01	
Ores and minerals; Electricity, gas and water				
Food products, beverages and tobacco; Textiles, apparel and leather products				
Other transportable goods, except metal products, machinery and equipment				
Metal products, machinery and equipment				
Construction work and constructions; Land				
Trade services; Hotel and restaurant services				
Transport, storage and communications services	-3.22	-3.16	-3.60	-4.48
Business services; Agricultural, mining and manufacturing services		-0.15	-0.12	-0.11
Community, social and personal services	-0.95	-0.88	-0.88	-0.88
Expenditures abroad				
Total	-4.17	-4.19	-4.61	-5.47

3.22 Total taxes less subsidies on products

Commodities (by provisional CPC sections)	1995	1996	1997	1998
	<i>in AFL million</i>			
Agriculture, forestry and fishery products	1.24	1.53	1.57	1.55
Ores and minerals; Electricity, gas and water	0.16	0.19	0.34	0.32
Food products, beverages and tobacco; Textiles, apparel and leather products	59.00	60.21	60.20	59.45
Other transportable goods, except metal products, machinery and equipment	69.14	73.59	83.74	81.40
Metal products, machinery and equipment	38.91	44.27	45.97	44.80
Construction work and constructions; Land				
Trade services; Hotel and restaurant services	12.32	12.08	11.34	18.75
Transport, storage and communications services	-3.22	-3.16	-3.60	-4.48
Business services; Agricultural, mining and manufacturing services	18.69	20.84	22.29	28.88
Community, social and personal services	-0.95	-0.88	-0.88	-0.88
Expenditures abroad				
Total	195.29	208.67	220.97	229.79

3.23 Other taxes less subsidies on production

Industries	1995	1996	1997	1998
	<i>in AFL million</i>			
Agriculture, hunting, forestry; Fishing; Mining and quarrying	0.06	0.07	0.07	0.09
Manufacturing	0.39	0.47	0.44	0.62
Electricity, gas and water supply; Manufacture of refined petroleum products	0.53	0.68	0.67	0.81
Construction	1.05	1.24	1.13	1.43
Wholesale and retail trade; Repair of motor vehicles and household goods	10.38	10.03	9.26	9.62
Hotels and restaurants	2.06	2.43	2.20	2.55
Transport, storage and communications	0.89	1.19	1.10	1.32
Financial intermediation	0.69	0.92	0.88	1.01
Real estate activities	0.18	0.20	0.15	0.20
Other business activities	2.76	2.91	2.66	2.86
Public administration; Compulsory social security; Education	0.23	0.22	0.23	0.18
Health; Other community, social and personal service activities	33.35	11.18	15.72	19.74
Adjustment for fisim				
Total	52.57	31.54	34.51	40.43

3.24 SUPPLY TABLE (IN MILLION ARUBAN FLORINS), BASIC PRICES, 1995

	Output of industries													Total domestic supply	Imports of goods and services	C.i.f./f.o.b. adjustments on imports	Total supply at basic prices	Trade and transport margins	Taxes less subsidies on products	Total supply at purchasers' prices	
	Agri-culture, hunting, forestry; Fishing; Mining and quarrying	Manufac-turing	Electricity, gas and water supply; Manufac-ture of refined petroleum products	Construc-tion	Wholesale and retail trade; Repair of motor vehicles and household goods	Hotels and restau-rants	Transport, storage and commu-nications	Financial interme-diation	Real estate activities	Other business activities	Public admini-stration; Compul-sory social security; Education	Health; Other commu-nity, social and personal service activities	Adjust-ment for fisim								
	1	2	3	4	5	6	7	8	9	10	11	12	13	14	15	16	17	18	19	20	
<i>Commodities (by provisional CPC sections)</i>																					
1	Agriculture, forestry and fishery products	16.83												16.83	73.14		89.97	11.60	1.24	102.81	
2	Ores and minerals; electricity, gas and water	10.24	3.47	257.90										271.61	46.48		318.09	0.04	0.16	318.29	
3	Food products, beverages and tobacco; textiles, apparel and leather products		71.31											71.31	776.57		847.88	222.27	59.00	1129.15	
4	Other transportable goods, except metal products, machinery and equipment		74.09	47.10										121.19	333.29		454.48	162.16	69.14	685.78	
5	Metal products, machinery and equipment		2.29											2.29	397.17		399.46	65.10	38.91	503.47	
6	Construction work and constructions; land		17.33		422.21	0.73		0.43		3.42	1.37			445.49	42.60		488.09			488.09	
7	Trade services: hotel and restaurant services				4.35	485.36	566.84	0.07	0.06	8.71		8.01		1073.40			1073.40	-461.17	12.32	624.55	
8	Transport, storage and communications services		0.56			10.44	447.23			1.08	0.02			459.33	199.02	-160.73	497.62		-3.22	494.40	
9	Business services; agricultural, mining and manufacturing services	4.22	1.06	127.02	0.31	20.19	30.76	5.14	214.35	294.88	213.76	9.03	22.48	943.20	129.90	-22.03	1051.07		18.69	1069.76	
10	Community, social and personal services	0.04	0.64			0.02	43.09	5.54		1.11	417.27	356.23		823.94	82.54		906.48		-0.95	905.53	
<i>Adjustments</i>																					
11	C.i.f./f.o.b. adjustment on imports														-182.76	182.76	0.00			0.00	
12	Expenditures abroad														176.40		176.40			176.40	
13	Total	31.33	170.75	432.02	426.87	506.30	651.13	457.98	214.78	294.94	228.08	427.69	386.72	0.00	4228.59	2074.35	0.00	6302.94	0.00	195.29	6498.23

3.25 USE TABLE (IN MILLION ARUBAN FLORINS), PURCHASERS' PRICES, 1995

	Intermediate consumption of industries												Total intermediate consumption	Exports of goods and services	Final consumption expenditure	Gross capital formation	Total uses at purchasers' prices		
	Agriculture, hunting, forestry; Fishing; Mining and quarrying	Manufacturing	Electricity, gas and water supply; Manufacture of refined petroleum products	Construction	Wholesale and retail trade; Repair of motor vehicles and household goods	Hotels and restaurants	Transport, storage and communications	Financial intermediation	Real estate activities	Other business activities	Public administration; Compulsory social security; Education	Health; Other community, social and personal service activities						Adjustment for fisim	
	1	2	3	4	5	6	7	8	9	10	11	12	13	14	15	16	17	18	
<i>Commodities (by provisional CPC sections)</i>																			
1	Agriculture, forestry and fishery products	0.78	3.88	0.81	8.57	2.71	6.81	5.42	2.03		1.11		2.32	34.44	53.56	14.08	0.73	102.81	
2	Ores and minerals; electricity, gas and water	0.55	2.70	138.03	17.90	10.99	41.23	4.30	0.77	1.01	2.11	14.36	7.69	241.64		77.06	-0.41	318.29	
3	Food products, beverages and tobacco; textiles, apparel and leather products	3.93	28.88	6.09	55.52	17.58	151.45	29.78	13.47	0.28	10.09	1.43	27.01	345.51	575.24	196.33	12.07	1129.15	
4	Other transportable goods, except metal products, machinery and equipment	7.05	42.22	56.90	79.11	22.56	47.82	44.33	17.11	0.23	16.28	9.45	26.88	369.94	157.94	131.01	26.89	685.78	
5	Metal products, machinery and equipment	1.93	8.72	12.47	19.76	6.46	19.84	15.44	5.97	0.17	8.17	3.59	8.92	111.44	53.85	84.83	253.35	503.47	
6	Construction work and constructions; land	0.07	1.37	12.14	25.58	4.01	12.41	0.38	0.28	0.56	0.64	0.01	1.10	58.55	20.40	11.64	397.50	488.09	
7	Trade services; hotel and restaurant services	0.21	0.72	1.83	2.69	3.53	0.76	7.53	0.18	0.13	3.72	5.02	1.84	28.16	536.19	60.20		624.55	
8	Transport, storage and communications services	1.41	7.80	6.97	23.64	14.27	20.00	61.55	5.76	1.63	6.55	9.15	7.80	166.53	267.21	60.57	0.09	494.40	
9	Business services; agricultural, mining and manufacturing services	2.79	10.49	47.61	21.48	61.54	107.01	59.52	6.16	7.11	19.14	51.61	32.59	124.63	551.68	217.60	300.05	0.43	1069.76
10	Community, social and personal services	0.01	0.13	0.64	0.64	1.92	9.79	1.49	0.09	0.11	0.98	15.93	8.03	39.76	286.40	579.37		905.53	
11	<i>Adjustments</i>																		
11	Expenditures abroad	0.64	4.32	4.77	11.29	19.63	22.16	9.94	7.41	1.01	11.25	6.23	15.29	113.94		62.46		176.40	
12	Total uses at purchasers' prices	19.37	111.23	288.26	266.18	165.20	439.28	239.68	59.23	12.24	80.04	116.78	139.47	124.63	2061.59	2168.39	1577.60	690.65	6498.23
13	Total output at basic prices	31.33	170.75	432.02	426.87	506.30	651.13	457.98	214.78	294.94	228.08	427.69	386.72		4228.59				
14	Total gross value added at basic prices	11.96	59.52	143.76	160.69	341.10	211.85	218.30	155.55	282.70	148.04	310.91	247.25	-124.63	2167.00				
15	Other taxes less other subsidies on production	0.06	0.39	0.53	1.05	10.38	2.06	0.89	0.69	0.18	2.76	0.23	33.35		52.57				
16	Compensation of Employees	6.13	41.42	54.85	107.61	187.18	211.36	97.28	70.83	19.14	107.34	274.19	155.16		1332.49				
17	Operating surplus, gross	5.77	17.71	88.38	52.03	143.54	-1.57	120.13	84.03	263.38	37.94	36.49	58.74	-124.63	781.94				
18	Total gross value added at basic prices	11.96	59.52	143.76	160.69	341.10	211.85	218.30	155.55	282.70	148.04	310.91	247.25	-124.63	2167.00				
19	Taxes less subsidies on products														195.29				
20	Total gross value added at market prices														2362.29				

3.26 SUPPLY TABLE (IN MILLION ARUBAN FLORINS), BASIC PRICES, 1996

	Output of industries												Total domestic supply	Imports of goods and services	C.i.f./f.o.b. adjustments on imports	Total supply at basic prices	Trade and transport margins	Taxes less subsidies on products	Total supply at purchasers' prices		
	Agriculture, hunting, forestry; Fishing; Mining and quarrying	Manufacturing	Electricity, gas and water supply; Manufacture of refined petroleum products	Construction	Wholesale and retail trade; Repair of motor vehicles and household goods	Hotels and restaurants	Transport, storage and communications	Financial intermediation	Real estate activities	Other business activities	Public administration; Compulsory social security; Education	Health; Other community, social and personal service activities									
	1	2	3	4	5	6	7	8	9	10	11	12	13	14	15	16	17	18	19	20	
<i>Commodities (by provisional CPC sections)</i>																					
1	Agriculture, forestry and fishery products	14.63												14.63	59.28		73.91	8.97	1.53	84.41	
2	Ores and minerals; electricity, gas and water	7.92	3.72	278.20										289.84	71.20		361.04	0.07	0.19	361.30	
3	Food products, beverages and tobacco; textiles, apparel and leather products		75.99			0.01								76.00	788.32		864.32	228.35	60.21	1152.88	
4	Other transportable goods, except metal products, machinery and equipment		74.18	75.28										149.46	353.47		502.93	172.17	73.59	748.69	
5	Metal products, machinery and equipment		2.82											2.82	423.64		426.46	70.95	44.27	541.68	
6	Construction work and constructions; land		14.15		429.59	1.05		0.34		3.89	0.99			450.01	18.45		468.46			468.46	
7	Trade services; hotel and restaurant services				2.36	511.03	618.05	0.25	0.09	8.31		13.51		1153.60			1153.60	-480.51	12.08	685.17	
8	Transport, storage and communications services		0.57			9.51	445.97			1.04	0.07	0.00		457.16	221.72	-171.23	507.65		-3.16	504.49	
9	Business services; agricultural, mining and manufacturing services	4.44	1.18	165.33	0.43	23.32	28.36	6.20	241.22	333.72	237.63	16.00	31.82	1089.65	145.68	-23.00	1212.33		20.84	1233.17	
10	Community, social and personal services	0.04	0.65			0.04	28.52	7.17		1.07	401.72	357.28		796.49	90.96		887.45		-0.88	886.57	
<i>Adjustments</i>																					
11	C.i.f./f.o.b. adjustment on imports														-194.23	194.23	0.00			0.00	
12	Expenditures abroad														214.40		214.40			214.40	
13	Total	27.03	173.26	518.81	432.38	535.45	684.44	459.59	241.56	333.81	251.94	418.78	402.61	0.00	4479.66	2192.89	0.00	6672.55	0.00	208.67	6881.22

3.27 USE TABLE (IN MILLION ARUBAN FLORINS), PURCHASERS' PRICES, 1996

	Intermediate consumption of industries												Total intermediate consumption	Exports of goods and services	Final consumption expenditure	Gross capital formation	Total uses at purchasers' prices		
	Agriculture, hunting, forestry; Fishing; Mining and quarrying	Manufacturing	Electricity, gas and water supply; Manufacture of refined petroleum products	Construction	Wholesale and retail trade; Repair of motor vehicles and household goods	Hotels and restaurants	Transport, storage and communications	Financial intermediation	Real estate activities	Other business activities	Public administration; Compulsory social security; Education	Health; Other community, social and personal service activities						Adjustment for fisim	
	1	2	3	4	5	6	7	8	9	10	11	12	13	14	15	16	17	18	
<i>Commodities (by provisional CPC sections)</i>																			
1	Agriculture, forestry and fishery products	0.78	3.60	1.65	9.64	3.10	5.80	3.33	2.24		1.39		2.83	34.36	33.97	15.47	0.61	84.41	
2	Ores and minerals; electricity, gas and water	0.52	3.05	172.04	15.42	11.54	49.03	4.95	1.01	0.68	2.30	11.37	9.16	281.07		80.55	-0.32	361.30	
3	Food products, beverages and tobacco; textiles, apparel and leather products	2.50	27.76	10.70	55.28	17.93	170.69	18.99	13.02	0.31	10.98	1.21	31.87	361.24	582.56	211.53	-2.45	1152.88	
4	Other transportable goods, except metal products, machinery and equipment	6.08	43.73	82.30	85.60	25.38	35.38	62.38	18.58	0.16	17.30	7.97	30.83	415.69	167.16	140.21	25.63	748.69	
5	Metal products, machinery and equipment	2.33	15.50	27.97	36.62	12.23	20.43	16.97	9.95	0.01	10.19	3.27	15.99	171.46	45.98	91.26	232.98	541.68	
6	Construction work and constructions; land	0.06	1.22	12.27	21.28	4.52	7.56	0.30	0.31	0.65	0.78		0.85	49.80	10.60	13.14	394.92	468.46	
7	Trade services; hotel and restaurant services	0.23	2.18	2.14	3.32	4.54	0.67	8.56	0.19	0.08	3.39	6.05	1.87	33.22	585.40	66.55		685.17	
8	Transport, storage and communications services	0.52	3.72	7.10	10.80	10.75	13.20	53.40	2.92	1.86	5.18	8.46	4.65	122.56	322.01	59.77	0.15	504.49	
9	Business services; agricultural, mining and manufacturing services	1.79	7.03	55.53	11.50	66.07	118.25	78.94	5.61	7.31	19.50	59.74	32.47	129.01	592.75	300.40	332.62	7.40	1233.17
10	Community, social and personal services	0.01	0.33	0.83	0.25	2.03	5.90	1.43	0.11	0.11	0.82	9.10	6.87	27.79	273.26	585.52		886.57	
11	Expenditures abroad	0.75	5.13	7.45	13.31	24.21	24.55	13.22	9.82	1.00	15.15	4.93	19.54	139.06		75.34		214.40	
12	Total uses at purchasers' prices	15.57	113.25	379.98	263.02	182.30	451.46	262.47	63.76	12.17	86.98	112.10	156.93	129.01	2229.00	2321.34	1671.96	658.92	6881.22
13	Total output at basic prices	27.03	173.26	518.81	432.38	535.45	684.44	459.59	241.56	333.81	251.94	418.78	402.61		4479.66				
14	Total gross value added at basic prices	11.46	60.01	138.83	169.36	353.15	232.98	197.12	177.80	321.64	164.96	306.68	245.68	-129.01	2250.66				
15	Other taxes less other subsidies on production	0.07	0.47	0.68	1.24	10.03	2.43	1.19	0.92	0.20	2.91	0.22	11.18		31.54				
16	Compensation of Employees	5.95	41.11	59.07	105.62	191.97	207.58	108.17	77.95	16.67	120.13	264.81	163.90		1362.93				
17	Operating surplus, gross	5.44	18.43	79.08	62.50	151.15	22.97	87.76	98.93	304.77	41.92	41.65	70.60	-129.01	856.19				
18	Total gross value added at basic prices	11.46	60.01	138.83	169.36	353.15	232.98	197.12	177.80	321.64	164.96	306.68	245.68	-129.01	2250.66				
19	Taxes less subsidies on products														208.67				
20	Total gross value added at market prices														2459.33				

3.28 SUPPLY TABLE (IN MILLION ARUBAN FLORINS), BASIC PRICES, 1997

	Output of industries													Total domestic supply	Imports of goods and services	C.i.f./f.o.b. adjustments on imports	Total supply at basic prices	Trade and transport margins	Taxes less subsidies on products	Total supply at purchasers' prices	
	Agriculture, hunting, forestry; Fishing; Mining and quarrying	Manufacturing	Electricity, gas and water supply; Manufacture of refined petroleum products	Construction	Wholesale and retail trade; Repair of motor vehicles and household goods	Hotels and restaurants	Transport, storage and communications	Financial intermediation	Real estate activities	Other business activities	Public administration; Compulsory social security; Education	Health; Other community, social and personal service activities	Adjustment for fisim								
	1	2	3	4	5	6	7	8	9	10	11	12	13	14	15	16	17	18	19	20	
<i>Commodities (by provisional CPC sections)</i>																					
1	Agriculture, forestry and fishery products	10.79												10.79	58.74		69.53	9.77	1.57	80.87	
2	Ores and minerals; electricity, gas and water	6.15	3.98	294.84										304.97	75.33		380.30	0.09	0.34	380.73	
3	Food products, beverages and tobacco; textiles, apparel and leather products		73.55											73.55	840.49		914.04	245.24	60.20	1219.48	
4	Other transportable goods, except metal products, machinery and equipment		74.41	76.94										151.35	401.06		552.41	188.84	83.74	824.99	
5	Metal products, machinery and equipment		3.36											3.36	442.30		445.66	78.02	45.97	569.65	
6	Construction work and constructions; land		19.42		506.27	0.34		0.14	0.49		3.30	1.07		531.03	21.25		552.28			552.28	
7	Trade services; hotel and restaurant services				1.13	562.06	627.06	0.24	0.09	5.73		15.91		1212.22			1212.22	-521.96	11.34	701.60	
8	Transport, storage and communications services		0.61			11.00	498.99			1.03	0.02	0.00		511.65	262.92	-182.32	592.25		-3.60	588.65	
9	Business services; agricultural, mining and manufacturing services	5.83	1.69	225.65	0.49	23.64	8.70	9.53	243.30	372.97	282.69	10.83	28.34	1213.66	188.85	-24.65	1377.86		22.29	1400.15	
10	Community, social and personal services	0.21	0.69			65.91	5.57			1.30	510.99	406.12		990.79	77.60		1068.39		-0.88	1067.51	
<i>Adjustments</i>																					
11	C.i.f./f.o.b. adjustment on imports														-206.97	206.97	0.00			0.00	
12	Expenditures abroad														220.10		220.10			220.10	
13	Total	22.98	177.71	597.43	507.89	586.04	712.67	514.47	243.79	373.06	294.05	522.91	450.37	0.00	5003.37	2381.67	0.00	7385.04	0.00	220.97	7606.01

3.29 USE TABLE (IN MILLION ARUBAN FLORINS), PURCHASERS' PRICES, 1997

	Intermediate consumption of industries												Total intermediate consumption	Exports of goods and services	Final consumption expenditure	Gross capital formation	Total uses at purchasers' prices		
	Agriculture, hunting, forestry; Fishing; Mining and quarrying	Manufacturing	Electricity, gas and water supply; Manufacture of refined petroleum products	Construction	Wholesale and retail trade; Repair of motor vehicles and household goods	Hotels and restaurants	Transport, storage and communications	Financial intermediation	Real estate activities	Other business activities	Public administration; Compulsory social security; Education	Health; Other community, social and personal service activities						Adjustment for fisim	
	1	2	3	4	5	6	7	8	9	10	11	12	13	14	15	16	17	18	
<i>Commodities (by provisional CPC sections)</i>																			
1	Agriculture, forestry and fishery products	0.72	2.58	0.89	6.34	1.80	4.86	3.46	1.32	0.11	0.86		1.99		24.93	38.41	16.81	0.72	80.87
2	Ores and minerals; electricity, gas and water	0.53	3.61	172.83	18.86	13.41	51.63	6.15	1.47	0.69	3.57	8.38	10.02		291.15	0.09	89.38	0.11	380.73
3	Food products, beverages and tobacco; textiles, apparel and leather products	1.45	21.33	7.61	43.80	12.44	182.73	19.61	9.20	1.11	8.44	2.26	29.53		339.51	661.14	225.48	-6.65	1219.48
4	Other transportable goods, except metal products, machinery and equipment	3.99	42.88	91.86	90.71	24.71	39.27	68.93	17.17	1.75	20.36	10.54	36.15		448.32	191.30	149.68	35.69	824.99
5	Metal products, machinery and equipment	1.58	14.37	45.30	38.52	11.44	23.72	18.54	8.91	0.88	16.66	2.69	17.86		200.47	64.28	97.74	207.16	569.65
6	Construction work and constructions; land	0.10	1.17	12.50	36.32	4.85	7.46	0.30	0.25	0.67	0.98	0.01	1.01		65.62	11.20	14.05	461.41	552.28
7	Trade services; hotel and restaurant services	0.24	2.25	2.57	3.01	4.09	0.76	10.43	0.24	0.14	4.19	4.77	2.38		35.07	592.98	73.55		701.60
8	Transport, storage and communications services	0.64	6.45	9.79	23.91	14.56	12.78	62.55	5.25	2.33	7.62	10.76	9.12		165.76	344.21	78.63	0.05	588.65
9	Business services; agricultural, mining and manufacturing services	1.58	11.50	71.07	26.01	82.76	115.97	87.97	7.14	7.88	25.23	86.84	39.71	142.67	706.33	335.65	356.71	1.46	1400.15
10	Community, social and personal services	0.02	0.23	0.95	0.53	2.23	4.17	0.69	0.11	0.09	1.08	43.10	6.31		59.51	283.53	724.48	-0.01	1067.51
11	<i>Adjustments</i>																		
11	Expenditures abroad	0.75	5.38	7.60	13.30	24.70	23.63	12.97	10.19	1.41	16.56	5.89	20.68		143.06		77.04		220.10
12	Total uses at purchasers' prices	11.60	111.75	422.97	301.31	196.99	466.98	291.60	61.25	17.06	105.55	175.24	174.76	142.67	2479.73	2522.79	1903.55	699.94	7606.01
13	Total output at basic prices	22.98	177.71	597.43	507.89	586.04	712.67	514.47	243.79	373.06	294.05	522.91	450.37	0.00	5003.37				
14	Total gross value added at basic prices	11.38	65.96	174.46	206.58	389.05	245.69	222.87	182.54	356.00	188.50	347.67	275.61	-142.67	2523.64				
15	Other taxes less other subsidies on production	0.07	0.44	0.67	1.13	9.26	2.20	1.10	0.88	0.15	2.66	0.23	15.72		34.51				
16	Compensation of Employees	6.26	44.93	65.15	110.54	205.22	215.38	115.34	84.65	15.19	137.56	306.61	184.49		1491.32				
17	Operating surplus, gross	5.05	20.59	108.64	94.91	174.57	28.11	106.43	97.01	340.66	48.28	40.83	75.40	-142.67	997.81				
18	Total gross value added at basic prices	11.38	65.96	174.46	206.58	389.05	245.69	222.87	182.54	356.00	188.50	347.67	275.61	-142.67	2523.64				
19	Taxes less subsidies on products														220.97				
20	Total gross value added at market prices														2744.61				

3.30 SUPPLY TABLE (IN MILLION ARUBAN FLORINS), BASIC PRICES, 1998

	Output of industries																				
	Agri- culture, hunting; forestry; Fishing; Mining and quarrying	Manufac- turing	Electricity, gas and water supply; Manufac- ture of refined petroleum products	Construc- tion	Wholesale and retail trade; Repair of motor vehicles and household goods	Hotels and restau- rants	Transport, storage and commu- nications	Financial interme- diation	Real estate activities	Other business activities	Public admini- stration; Compul- sory social security; Education	Health; Other commu- nity, social and personal service activities	Adjust- ment for fisim	Total domestic supply	Imports of goods and services	C.i.f./ f.o.b. adjust- ments on imports	Total supply at basic prices	Trade and transport margins	Taxes less subsidies on products	Total supply at pur- chasers' prices	
	1	2	3	4	5	6	7	8	9	10	11	12	13	14	15	16	17	18	19	20	
<i>Commodities (by provisional CPC sections)</i>																					
1	Agriculture, forestry and fishery products	11.54												11.54	44.38		55.92	7.85	1.55	65.32	
2	Ores and minerals; electricity, gas and water	6.13	7.55	296.79										310.47	58.62		369.09	0.08	0.32	369.49	
3	Food products, beverages and tobacco; textiles, apparel and leather products		76.30											76.30	870.86		947.16	257.06	59.45	1263.67	
4	Other transportable goods, except metal products, machinery and equipment		76.87	58.30										135.17	444.06		579.23	203.92	81.40	864.55	
5	Metal products, machinery and equipment		12.86											12.86	501.46		514.32	85.74	44.80	644.86	
6	Construction work and constructions; land		26.47		532.64	0.24		0.14	0.11		4.07	0.44		564.11	42.00		606.11			606.11	
7	Trade services; hotel and restaurant services				3.67	594.82	645.83	0.24	0.09	7.33		18.40		1270.38			1270.38	-554.65	18.75	734.48	
8	Transport, storage and communications services		0.68			10.58	500.80			0.96				513.02	248.34	-194.74	566.62		-4.48	562.14	
9	Business services; agricultural, mining and manufacturing services	8.37	1.74	291.83	0.31	22.07	11.31	10.60	261.54	394.85	286.35	11.01	26.02	1326.00	197.14	-26.04	1497.10		28.88	1525.98	
10	Community, social and personal services	0.65	1.16				60.21	5.23		1.33	501.02	414.52		984.12	137.30		1121.42		-0.88	1120.54	
<i>Adjustments</i>																					
11	C.i.f./f.o.b. adjustment on imports														-220.78	220.78					
12	Expenditures abroad														231.20		231.20			231.20	
13	Total	26.69	203.63	646.92	536.62	617.13	727.93	517.01	261.65	394.94	300.04	512.47	458.94	0.00	5203.97	2554.58	0.00	7758.55	0.00	229.79	7988.34

3.31 USE TABLE (IN MILLION ARUBAN FLORINS), PURCHASERS' PRICES, 1998

		Intermediate consumption of industries																	
		Agriculture, hunting, forestry; Fishing; Mining and quarrying	Manufacturing	Electricity, gas and water supply; Manufacture of refined petroleum products	Construction	Wholesale and retail trade; repair of motor vehicles and household goods	Hotels and restaurants	Transport, storage and communications	Financial intermediation	Real estate activities	Other business activities	Public administration; Compulsory social security; Education	Health; Other community, social and personal service activities	Adjustment for firms	Total intermediate consumption	Exports of goods and services	Final consumption expenditure	Gross capital formation	Total uses at purchasers' prices
		1	2	3	4	5	6	7	8	9	10	11	12	13	14	15	16	17	18
<i>Commodities (by provisional CPC sections)</i>																			
1	Agriculture, forestry and fishery products	0.91	3.49	1.20	8.33	2.28	5.06	5.35	1.92	0.03	1.18	0.00	2.70		32.45	12.57	19.99	0.31	65.32
2	Ores and minerals; electricity, gas and water	0.75	4.69	149.92	22.30	15.60	49.71	7.45	2.24	0.66	3.38	9.02	10.63		276.35		93.11	0.03	369.49
3	Food products, beverages and tobacco; textiles, apparel and leather products	1.60	22.81	8.33	34.98	9.57	173.67	19.54	8.35	0.45	7.02	1.86	28.44		316.62	659.81	254.83	32.41	1263.67
4	Other transportable goods, except metal products, machinery and equipment	4.21	43.26	82.35	73.47	20.04	31.19	57.05	15.46	0.66	18.84	11.00	32.70		390.23	270.92	167.05	36.35	864.55
5	Metal products, machinery and equipment	2.88	16.12	96.21	41.04	12.05	24.12	19.49	11.04	0.29	12.10	3.27	16.94		255.55	60.49	110.01	218.81	644.86
6	Construction work and constructions; land	0.19	2.68	13.13	56.42	5.62	9.03	0.22	0.10	0.64	1.44	0.04	0.94		90.45	14.20	15.04	486.42	606.11
7	Trade services; hotel and restaurant services	0.44	1.94	2.87	2.85	4.02	0.75	8.61	0.21	0.10	5.46	4.41	2.52		34.18	620.92	79.38		734.48
8	Transport, storage and communications services	1.18	10.31	10.88	33.84	15.91	12.79	53.65	9.33	1.67	8.24	10.02	11.61		179.43	302.47	80.20	0.04	562.14
9	Business services; agricultural, mining and manufacturing services	2.00	11.25	78.50	18.97	94.04	106.51	92.35	7.53	7.31	24.44	66.74	38.12	152.06	699.82	419.24	406.20	0.72	1525.98
10	Community, social and personal services	0.37	3.51	2.74	11.76	4.54	6.99	4.43	2.60	0.13	2.38	36.11	9.90		85.46	323.40	711.94	-0.26	1120.54
<i>Adjustments</i>																			
11	Expenditures abroad	0.86	6.53	7.71	14.99	26.86	23.26	14.57	10.69	1.37	17.60	5.96	19.88		150.28		80.92		231.20
12	Total uses at purchasers' prices	15.39	126.59	453.84	318.95	210.53	443.08	282.71	69.47	13.31	102.08	148.43	174.38	152.06	2510.82	2684.02	2018.67	774.83	7988.34
13	Total output at basic prices	26.69	203.63	646.92	536.62	617.13	727.93	517.01	261.65	394.94	300.04	512.47	458.94		5203.97				
14	Total gross value added at basic prices	11.30	77.04	193.08	217.67	406.60	284.85	234.30	192.18	381.63	197.96	364.04	284.56	-152.06	2693.15				
15	Other taxes less other subsidies on production	0.09	0.62	0.81	1.43	9.62	2.55	1.32	1.01	0.20	2.86	0.18	19.74		40.43				
16	Compensation of Employees	7.21	53.94	69.28	123.14	220.48	220.09	121.66	87.82	17.81	144.49	326.78	178.20		1570.90				
17	Operating surplus, gross	4.00	22.48	122.99	93.10	176.50	62.21	111.32	103.35	363.62	50.61	37.08	86.62	-152.06	1081.82				
18	Total gross value added at basic prices	11.30	77.04	193.08	217.67	406.60	284.85	234.30	192.18	381.63	197.96	364.04	284.56	-152.06	2693.15				
19	Taxes less subsidies on products														229.79				
20	Total gross value added at market prices														2922.94				

4. Annexes

4.1 Industrial classification of all economic activities

In the first column of the table below an overview is presented of the industrial classification of all economic activities used in this publication. The classification scheme on which data for the supply and use tables are collected are shown in the second column of the table. The correspondence of these classifications to ISIC Rev. 3 (International Standard Industrial Classification of all Economic Activities, Rev. 3) is also presented in the table below. An asterisk (*) indicates partial correspondence.

Publication	National accounts classification	International standard industrial classification of all economic activities (ISIC (Rev.3))			
		Tabulation categories	Division	Group	Class
Industries	Industries				
	Agriculture, hunting and forestry	A			
Agriculture, hunting, forestry; Fishing; Mining and quarrying	Fishing	B			
	Mining and quarrying	C			
Manufacturing	Manufacture of food products, beverages and tobacco	D*		15	
		D*		16	
	Manufacture of textiles, textile- and leather products	D*		17	
		D*		18	
		D*		19	
	Manufacture of wood products, pulp, paper and paper products; publishing	D*		20	
		D*		21	
		D*		22	
	Manufacture of chemicals, chemical products and man-made fibres	D*		24	
		D*		25	
	Manufacture of rubber and plastic products, and other non metallic mineral products	D*		26	
		D*		27	
	Manufacture of basic metals and fabricated metal products	D*		28	
		D*		29	
Manufacture of machinery and equipment n.e.c.	D*		29		

Publication	National accounts classification	International standard industrial classification of all economic activities (ISIC (Rev.3))			
		Tabulation categories	Division	Group	Class
Industries	Industries				
	Manufacture of electrical and optical equipment	D*		30	
		D*		31	
		D*		32	
Manufacturing <i>continued</i>		D*		33	
	Manufacture of transport equipment	D*		34	
		D*		35	
	Manufacturing n.e.c.	D*		36	
		D*		37	
	Production, collection and distribution of electricity	E*	40*		401
Electricity, gas and water supply; Manufacture of refined petroleum products	Manufacture of gas; distribution of gaseous fuels through mains	E*	40*		402
	Collection, purification and distribution of water	E*		41	
	Coastal refinery	D*		23	
Construction	Construction	F			
	Sale, maintenance and repair of motor vehicles and motorcycles	G*		50	
Wholesale and retail trade; Repair of motor vehicles and household goods	Wholesale trade and commission trade; except motor vehicles	G*		51	
	Retail trade, except of motor vehicles and motorcycles; repair of personal and household goods	G*		52	
Hotels and restaurants	Hotels	H*		551	
	Restaurants	H*		552	
	Land transport	I*		60	
	Water transport	I*		61	
Transport, storage and communications	Air transport	I*		62	
	Supporting and auxiliary transport services; activities of travel agencies	I*		63	
	Postal Services	I*	64*		641
	Telecommunications	I*	64*		642

Publication	National accounts classification	International standard industrial classification of all economic activities (ISIC (Rev.3))			
		Tabulation categories	Division	Group	Class
Industries	Industries				
Financial intermediation	Central Bank of Aruba	J*	65*	651*	6511
	Commercial banks	J*	65*	651*	6519
	Other financial institutions	J*	65*		659
	Life insurance companies	J*	66*	660*	6601
	Pension funds	J*	66*	660*	6602
	Non-life insurance companies	J*	66*	660*	6603
	Financial auxiliaries	J*		67	
Real estate activities	Real estate activities with own or leased property	K*	70*		701
	Real estate activities on a fee or contract basis	K*	70*		702
Other business activities	Renting of machinery and equipment without operator and of personal and household goods	K*		71	
	Computer and related activities	K*		72	
	Research and development	K*		73	
	Other business activities	K*		74	
Public administration; Compulsory social security; Education	Public administration and defence; compulsory social security	L			
	Education	M			
Health; Other community, social and personal service activities	Health and social work	N			
	Sewage and refuse disposal, sanitation and similar activities	O*		90	
	Activities of membership organizations n.e.c.	O*		91	
	Motion picture, radio, television and other entertainment activities	O*	92*		921
	News agency activities	O*	92*		922
	Library, archives, museums and other cultural activities	O*	92*		923
	Sporting activities and related services	O*	92*	924*	9241*
	Activities of casino's and lotteries	O*	92*	924*	9249*
	Activities of "nummerkantoren"	O*	92*	924*	9249*
	Other recreational activities.	O*	92*	924*	9249*
	Other service activities	O*		93	
	Private households with employed persons	P			
Adjustment for FISIM	Financial intermediation services indirectly measured (FISIM)				

4.2 Provisional central product classification by sections and divisions

Section	Division	Description
0		Agriculture, forestry and fishery products
	01	Products of agriculture, horticulture and market gardening
	02	Live animals and animal products
	03	Forestry and logging products
	04	Fish and other fishing products
1		Ores and minerals; electricity, gas and water
	11	Coal and lignite; peat
	12	Crude petroleum and natural gas
	13	Uranium and thorium ores
	14	Metal ores
	15	Stone, sand and clay
	16	Other minerals
	17	Electricity, town gas, steam and hot water
	18	Water
2		Food products, beverages and tobacco; textiles, apparel and leather products
	21	Meat, fish, fruit, vegetables, oils and fats
	22	Dairy products
	23	Grain mill products, starches and starch products; other food products
	24	Beverages
	25	Tobacco products
	26	Yarn and thread; woven and tufted textile fabrics
	27	Textile articles other than apparel
	28	Knitted or crocheted fabrics; wearing apparel
	29	Leather and leather products; footwear

Section	Division	Description
3		Other transportable goods, except metal products, machinery and equipment
	31	Products of wood, cork, straw and plaiting materials
	32	Pulp, paper and paper products; printed matter and related articles
	33	Coke oven products; refined petroleum products; nuclear fuel
	34	Basic chemicals
	35	Other chemical products; man-made fibres
	36	Rubber and plastics products
	37	Glass and glass products and other non-metallic products n.e.c.
	38	Furniture; other transportable goods n.e.c.
	39	Wastes or scraps
4		Metal products, machinery and equipment
	41	Basic metals
	42	Fabricated metal products, except machinery and equipment
	43	General purpose machinery
	44	Special purpose machinery
	45	Office, accounting and computing machinery
	46	Electrical machinery and apparatus
	47	Radio, television and communication equipment and apparatus
	48	Medical appliances, precision and optical instruments, watches and clocks
	49	Transport equipment
5		Construction work and constructions; land
	51	Construction work
	52	Constructions
	53	Land
6		Trade services; hotel and restaurant services
	61	Sale, maintenance and repair services of motor vehicles and motorcycles
	62	Commission agents' and wholesale trade services, except of motor vehicles and motorcycles
	63	Retail trade services; repair services of personal and household goods
	64	Hotel and restaurant services

Section	Division	Description
7		Transport, storage and communications services
	71	Land transport services
	72	Water transport services
	73	Air transport services
	74	Supporting and auxiliary transport services
	75	Post and telecommunications services
8		Business services; agricultural, mining and manufacturing services
	81	Financial intermediation services and auxiliary services therefor
	82	Real estate services
	83	Leasing or rental services without operator
	84	Computer and related services
	85	Research and development services
	86	Legal, accounting, auditing and bookkeeping services; taxation services; market research and public opinion polling services; management and consulting services; architectural, engineering and other technical services
	87	Business services n.e.c.
	88	Agricultural, mining and manufacturing services
	89	Intangible assets
9		Community, social and personal services
	91	Public administration and other services to the community as a whole; compulsory social security services
	92	Education services
	93	Health and social services
	94	Sewage and refuse disposal, sanitation and other environmental protection services
	95	Services of membership organizations
	96	Recreational, cultural and sporting services
	97	Other services
	98	Private households with employed persons
	99	Services provided by Extraterritorial organizations and bodies