



### Highlights February 2008 in Review

**Prices:**

- Inflation in February 2008 up by 0.6 percent
- Year over year inflation at 8.7 percent
- Year to date inflation in February 2008 up by 1.3 percent
- Price of gasoline up by 1.0 percent in February 2008

**Foreign Trade in Merchandise:**

- Total imports in February 2008 increased by 2.9 percent
- 45.0 percent growth of exports in February 2008

### Monthly Economic Indicators

	% Change	
	Last Month	Last Year
<b>Consumer prices</b>		
Total Index	0.6	8.7
<b>Foreign Trade</b>		
Import	-4.4	2.9
Export	27.7	45.0

Source: Central Bureau of Statistics Aruba

## Inflation in February up by 0.6 percent

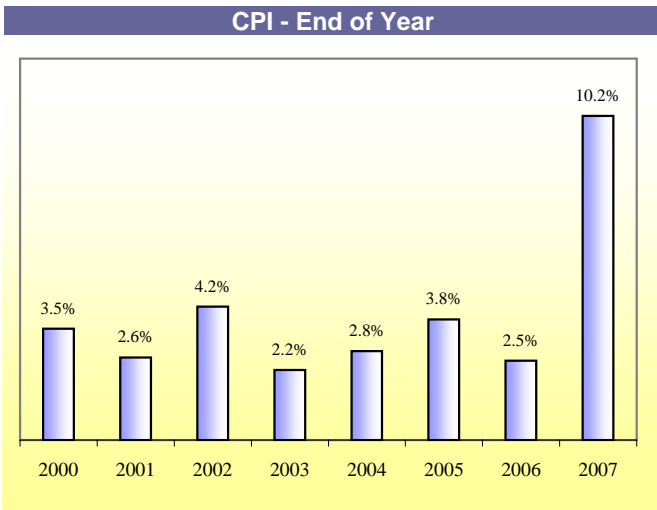
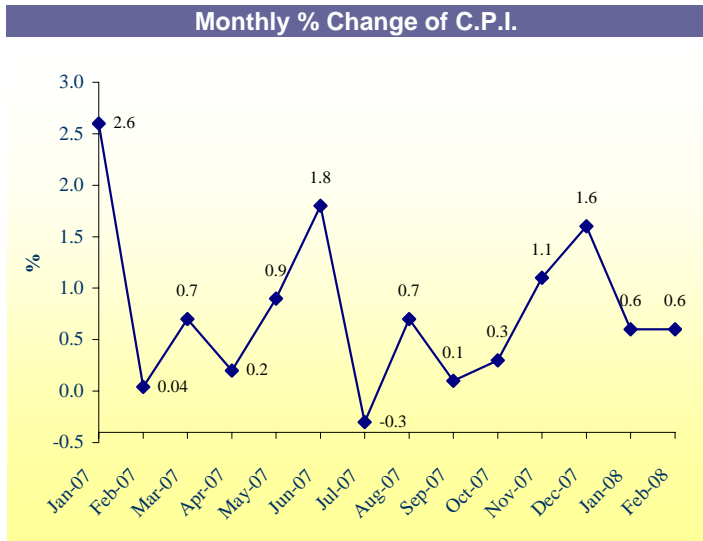
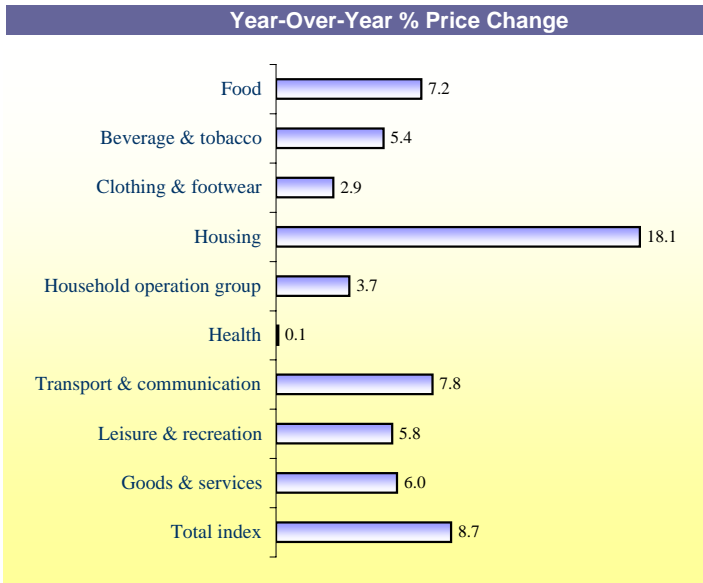
In February 2008, average prices in Aruba increased by 0.6 percent compared to the previous month. Price increases were recorded for all product categories, particularly, clothing & footwear (2.1%), household operation (1.0%), beverage & tobacco (0.7%), food (0.5%), leisure & recreation (0.5%), goods & services (0.5%), housing (0.3%) and transport & communication (0.2%). On a year to date basis, average prices increased by 1.3 percent in February 2008. This is 1.4 percentage points lower compared to the similar period of 2007.

On a year-over-year basis, consumer prices went up by 8.7 percent in February 2008. Major price increases were recorded in the following categories:

1. **Housing**; In this category, the main price increases were recorded for water supply (39.8%) and domestic fuel and power (33.5%).
2. **Transport & communication**; Price increases were registered for all categories in this group, particularly, vehicle supplies (13.1%) and own transport (6.2%).
3. **Food**; With exception of sugar, sugar products & chocolate (-1.4%) and take away beverages & meal (-0.4%), price increases were recorded for all food categories, particularly, dairy products (20.9%), potatoes, vegetables & fruit (11.9%), meat, poultry, game, fish & shellfish (8.6%), groceries n.e.c. (7.5%), fats & oils (6.9%), grain products (4.7%) and ready to eat meals (3.9%).

Consumer Prices			
February 2008	% Change since		
	last month	last year	YTD % change
Food	0.5	7.2	1.5
Beverage & tobacco	0.7	5.4	0.9
Clothing & footwear	2.1	2.9	2.2
Housing	0.3	18.1	2.2
Household operation group	1.0	3.7	0.9
Health	0.0	0.1	0.3
Transport & communication	0.2	7.8	0.0
Leisure & recreation	0.5	5.8	0.9
Goods & services	0.5	6.0	0.8
<b>Total index</b>	<b>0.6</b>	<b>8.7</b>	<b>1.3</b>

Source: Central Bureau of Statistics Aruba



## Prices of water, electricity and gasoline

In February 2008, prices of electricity (brandstofclausule included) and water remained unchanged compared to the previous month. Gasoline price increased by 1.0 percent compared to January 2008, reaching the amount of Afl. 2.13 per liter. On the other hand, price of diesel declined by 0.6 percent compared to January 2008, following a drop of 2.3 percent in the corresponding period one month earlier. Diesel price reached an average price of Afl. 1.92 per liter in February 2008.

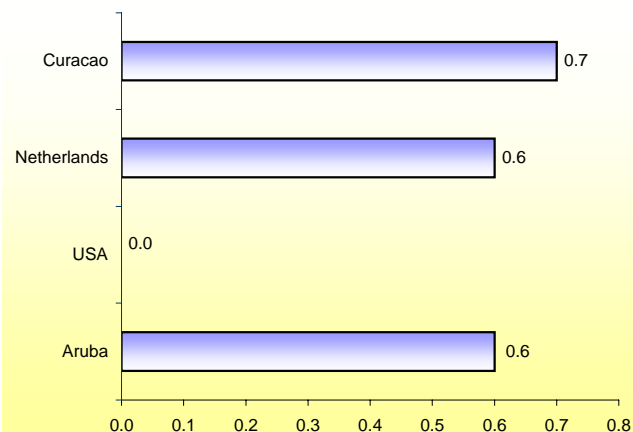
### Prices of utilities during March 2008

	Price change	Impact on CPI
Water	0.0%	0.00%
Electricity	0.0%	0.00%
Gasoline (premium)	2.2%	0.08%
<b>Total impact</b>		<b>0.08%</b>

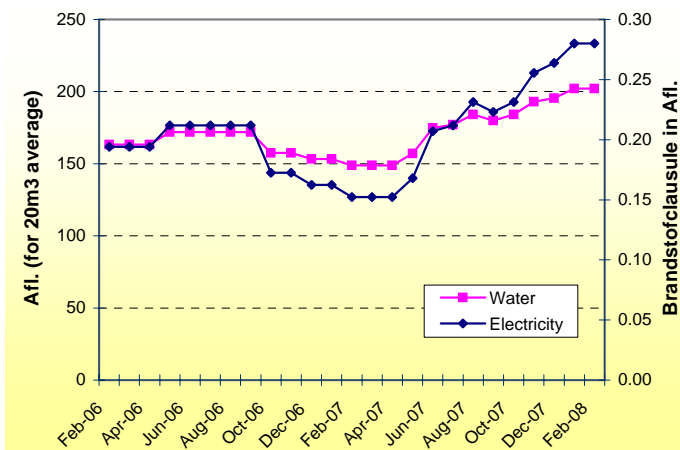
Source: Central Bureau of Statistics Aruba

Disregarding any other important fluctuations in prices over the month of March 2008, price movements of gasoline during the month of March will affect the consumer price index of March 2008 by 0.08 percent.

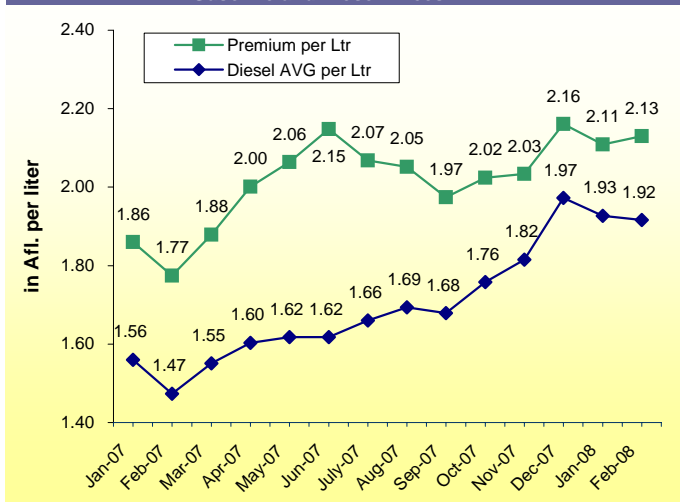
### CPI monthly percentage change in February 2008



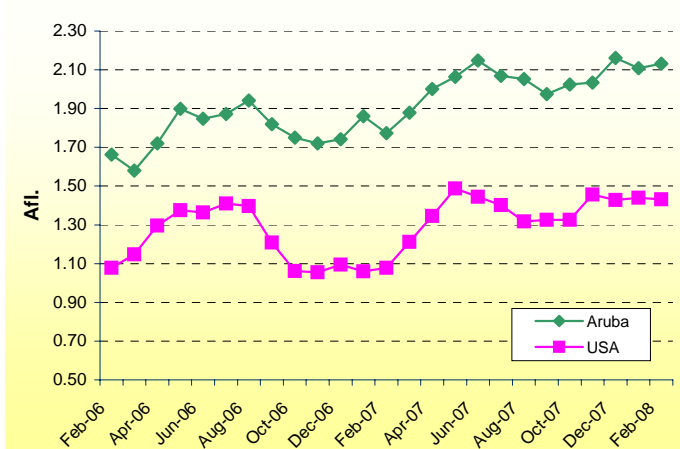
### Utility prices in Aruba



### Gasoline and Diesel Prices in Afl.



### Avg. Gasoline Prices in Afl.



## Imports of merchandise to Aruba up by 2.9 percent

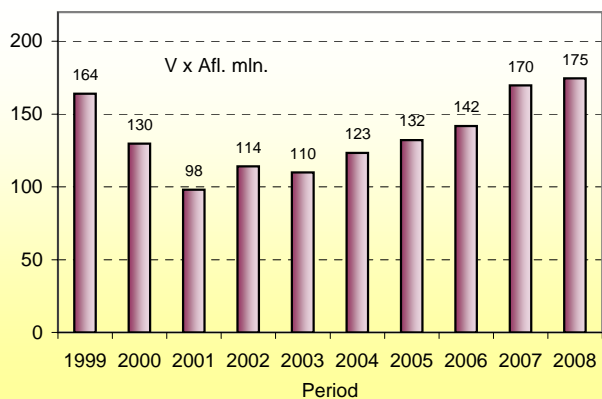
In February 2008, total value of imports of merchandise grew by 2.9 percent compared to February 2007, following an increase of 19.7 percent growth in the similar period one year earlier. This growth in February 2008 can be attributed to an expansion in the value of import of agriculture products (49.1%), mainly as a result of an increase of 27 percent in the import of liquor and other distilled beverages. Furthermore, value of import of other transportable goods and textiles, pearls & precious stones grew by 6.9 and 8.8 percent respectively, compared to February 2007.

Import of metal products, machinery & equipment dropped by 24.2 percent compared to February 2007, mainly as a result of a drop of 23 percent in the imports of wire insulated and electrical parts of machinery.

## Total exports up by 45.0 percent

Total exports in February 2008 expanded by a remarkable 45.0 percent compared to the same period in 2007. This growth is mainly caused by a growth in the value of export of agriculture products (34.5%), other transportable goods (285.6%) and metal products, machinery & equipment (150.2%). On year to date basis, total export increased by 25.1 percent compared to the comparable period of 2007.

Import of goods to Aruba from major trade partners during the months of February

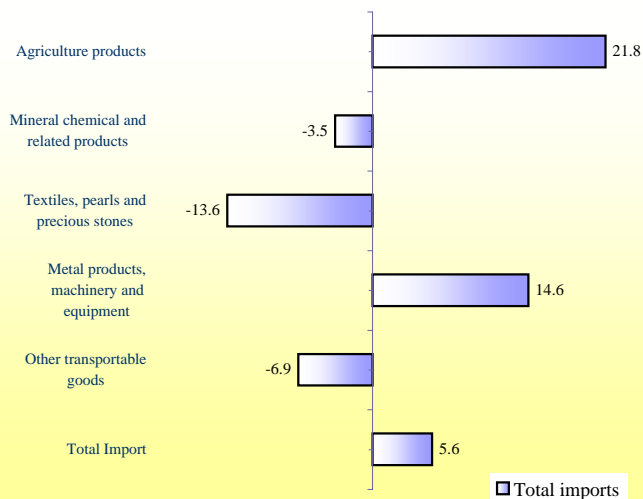


## Total import of goods to Aruba by commodity group

February 2008	Vx1,000 Af.	% Change since		YTD
		last month	last year	
<b>Commodity group</b>				
1. Agriculture products	54,529	25.9	49.1	21.8
2. Mineral chemical and related products	20,289	-3.5	-7.7	-3.5
3. Textiles, pearls and precious stones	22,810	-3.8	8.8	-13.6
4. Metal products, machinery and equipment	47,388	-28.7	-24.2	14.6
5. Other transportable good:	29,597	5.5	6.9	-6.9
<b>Total Import</b>	<b>174,612</b>	<b>-4.4</b>	<b>2.9</b>	<b>5.6</b>

Source: Central Bureau of Statistics Aruba

## Year to date % change in February 2008



## Total export of goods to Aruba by commodity group

February 2008	Vx1,000 Af.	% Change since		YTD
		last month	last year	
<b>Commodity group</b>				
1. Agriculture products	11,098	51.7	34.5	14.7
2. Mineral chemical and related products	218	45.5	-45.0	-29.8
3. Textiles, pearls and precious stones	93	-73.1	-68.4	6.8
4. Metal products, machinery and equipment	1,613	-12.9	150.2	75.6
5. Other transportable good:	1,407	-14.2	285.6	90.3
<b>Total Export</b>	<b>14,430</b>	<b>27.7</b>	<b>45.0</b>	<b>25.1</b>

Source: Central Bureau of Statistics Aruba

## Release Calendar Publications Central Bureau of Statistics April and May 2008

	Release date
<b>April 2008</b>	
Hotel Report March 2008	15 April 2008
Consumer Price Index March 2008	18 April 2008
Demographic Bulletin 1st Qtr. 2008	28 April 2008
Demographic Profile 2007	28 April 2008
March 2008 in Review	30 April 2008
<b>May 2008</b>	
Statistical Yearbook 2007	08 May 2008
Hotel Report April 2008	15 May 2008
Consumer Price Index April 2008	23 May 2008
Foreign Trade Statistics 1st Qtr. 2008	26 May 2008
April 2008 in Review	30 May 2008

## Upcoming Events in April and May 2008 Central Bureau of Statistics Aruba

### Fieldwork

#### April 2008

Cruise Survey	15 April - 28 April
Fieldwork Tourist Expenditure Survey April 2008	19 April - 26 April

#### May 2008

Fieldwork Tourist Expenditure Survey May 2008	17 May - 24 May
---	-----------------



# RELEASED PUBLICATIONS IN 2008

## Publications Central Bureau of Statistics Aruba

<b>Monthly Publications</b>	<b>Date issued</b>	<b>Prices in Afl.</b>
Consumer Price Index December 2007	16 January 2008	2.50
Hotel Report November 2007	16 January 2008	Free
Hotel Report December 2007	16 January 2008	Free
November 2007 in Review	22 January 2008	Free
December 2007 in Review	08 February 2008	Free
Consumer Price Index January 2008	14 February 2008	2.50
Hotel Report January 2008	26 February 2008	Free
January 2008 in Review	17 March 2008	Free
<b>Quarterly Publications</b>		
Economic Profile 3rd Qtr. of 2007	07 February 2008	15.00
Tourist Profile 3rd Qtr. 2007	18 February 2008	10.00
Demographic Bulletin 4th Qtr. 2007	11 March 2008	Free
Foreign Trade Statistics 4th Qtr. 2007	13 March 2008	15.00
<b>Annual Publications</b>		
Government Sector of Aruba 1997-2007	24 January 2008	26.00
Cost Structure of Businesses in Aruba 1996-2004	18 February 2008	15.00

<b>Consumer Prices</b>					<b>YTD<sup>1</sup></b>	<b>YTD</b>	<b>Monthly</b>	<b>Yearly</b>
<b>Sector</b>	<b>Jan '07</b>	<b>Feb '07</b>	<b>Jan '08</b>	<b>Feb '08</b>	<b>2007</b>	<b>2008</b>	<b>% change</b>	<b>% change</b>
Food	132.0	133.4	142.2	143.0	3.9	1.5	0.5	7.2
Beverage & tobacco	122.3	125.5	131.4	132.2	4.5	0.9	0.7	5.4
Clothing & footwear	134.7	136.7	137.6	140.6	8.0	2.2	2.1	2.9
Housing	130.4	128.9	151.6	152.2	0.5	2.2	0.3	18.1
Household operation	120.4	120.8	123.9	125.2	2.5	0.9	1.0	3.7
Health	100.1	100.1	100.2	100.2	0.1	0.3	0.0	0.1
Transport & comm	112.4	111.2	119.6	119.8	1.1	0.0	0.2	7.8
Leisure & recreation	117.8	118.8	125.0	125.7	3.6	0.9	0.5	5.8
Goods & services n.e.c.	116.3	116.6	123.0	123.6	2.1	0.8	0.5	6.0
<b>Total Index</b>	<b>123.6</b>	<b>123.6</b>	<b>133.6</b>	<b>134.4</b>	<b>2.7</b>	<b>1.3</b>	<b>0.6</b>	<b>8.7</b>

<b>Foreign Trade in Merchandise</b>					<b>YTD<sup>1</sup></b>	<b>YTD</b>	<b>Monthly</b>	<b>Yearly</b>
<b>(*1,000 Afl.)</b>					<b>2007</b>	<b>2008</b>	<b>% change</b>	<b>% change</b>
	<b>Jan '07</b>	<b>Feb '07</b>	<b>Jan '08</b>	<b>Feb '08</b>				
<b>Imports of goods by commodity group</b>								
Agriculture products	43,755	36,564	43,323	54,529	80,319	97,852	25.9	49.1
Mineral chemical and related products	20,812	21,987	21,021	20,289	42,799	41,309	-3.5	-7.7
Textiles, pearls and precious stones	32,869	20,956	23,702	22,810	53,825	46,512	-3.8	8.8
Metal products, machinery and equipment	36,864	62,518	66,506	47,388	99,382	113,894	-28.7	-24.2
Other transportable goods	34,278	27,683	28,064	29,597	61,962	57,661	5.5	6.9
<b>Total Import</b>	<b>168,578</b>	<b>169,708</b>	<b>182,616</b>	<b>174,612</b>	<b>338,286</b>	<b>357,228</b>	<b>-4.4</b>	<b>2.9</b>
<b>Exports of goods by commodity group</b>								
Agriculture products	7,810	8,250	7,315	11,098	16,060	18,414	51.7	34.5
Mineral chemical and related products	128	396	150	218	523	367	45.5	-45.0
Textiles, pearls and precious stones	117	296	347	93	413	441	-73.1	-68.4
Metal products, machinery and equipment	1,328	645	1,852	1,613	1,973	3,465	-12.9	150.2
Other transportable goods	1,237	365	1,640	1,407	1,602	3,047	-14.2	285.6
<b>Total Export</b>	<b>10,620</b>	<b>9,951</b>	<b>11,304</b>	<b>14,430</b>	<b>20,571</b>	<b>25,734</b>	<b>27.7</b>	<b>45.0</b>

<sup>1)</sup> YTD (Year to date) refers to the period of January 1st of the current year to the month under review. This period is compared to the same period of the previous year.  
 Sources: Central Bureau of Statistics Aruba, Customs Aruba.