

	1 st quarter 2001		2 nd quarter 2001		3 rd quarter 2001		4 th quarter 2001		YEAR TOTAL 2001		1 st quarter 2002		2 nd quarter 2002		3 rd quarter 2002		2002
	Male	Female	Male	Female	Male	Female	Male	Female	Male	Female	Male	Female	Male	Female	Male	Female	Total
TOTAL POPULATION	43,966	47,626	44,140	47,920	44,164	47,985			44,350	48,286	44,537	48,525	44,664	48,669	44,606	48,637	93,244
AGE-GROUPS																	
0-4	3,565	3,415	3,520	3,394	3,496	3,381			3,495	3,380	3,446	3,360	3,379	3,303	3,321	3,245	6,566
5-9	3,653	3,556	3,678	3,563	3,671	3,575			3,668	3,578	3,683	3,584	3,696	3,577	3,691	3,558	7,249
10-14	3,423	3,405	3,437	3,417	3,446	3,427			3,454	3,439	3,480	3,462	3,506	3,473	3,522	3,487	7,009
15-19	3,117	3,148	3,137	3,177	3,116	3,129			3,145	3,177	3,165	3,204	3,182	3,220	3,123	3,152	6,275
20-24	2,537	2,657	2,570	2,683	2,522	2,603			2,566	2,622	2,595	2,638	2,617	2,654	2,522	2,551	5,072
25-29	3,022	3,317	2,997	3,292	2,978	3,258			2,952	3,235	2,942	3,212	2,909	3,179	2,893	3,160	6,053
30-34	3,820	4,080	3,820	4,125	3,813	4,163			3,795	4,191	3,789	4,196	3,777	4,199	3,772	4,215	7,987
35-39	4,357	4,743	4,323	4,733	4,303	4,729			4,273	4,718	4,259	4,695	4,243	4,680	4,238	4,663	8,901
40-44	4,079	4,542	4,144	4,583	4,180	4,607			4,234	4,652	4,260	4,684	4,275	4,714	4,295	4,760	9,054
45-49	3,342	3,757	3,366	3,813	3,395	3,854			3,425	3,906	3,460	3,960	3,489	4,004	3,527	4,055	7,582
50-54	2,618	2,922	2,657	2,958	2,691	2,986			2,725	3,012	2,767	3,073	2,808	3,112	2,843	3,163	6,006
55-59	1,979	2,219	1,993	2,257	2,013	2,292			2,033	2,332	2,065	2,366	2,096	2,397	2,131	2,420	4,551
60-64	1,588	1,908	1,597	1,910	1,604	1,909			1,621	1,912	1,635	1,916	1,652	1,927	1,665	1,932	3,596
65-69	1,165	1,514	1,177	1,539	1,197	1,564			1,221	1,595	1,225	1,610	1,235	1,629	1,243	1,642	2,886
70-74	777	986	793	1,002	814	1,022			830	1,037	855	1,063	885	1,096	901	1,121	2,023
75-79	470	598	474	611	474	625			476	637	467	632	463	632	460	632	1,092
80-84	270	435	269	428	260	418			257	413	265	415	272	417	278	417	695
85-89	123	261	122	264	124	267			121	272	125	276	125	279	126	284	410
90-94	50	124	53	130	56	132			49	133	47	133	49	134	48	133	181
95+	12	38	13	41	12	44			8	47	8	46	8	44	7	47	54
LIVE BIRTHS	165	145	132	148	161	152	180	183	638	628	141	142	123	122	139	149	816
<i>Legitimate</i>	104	83	83	82	93	91	90	104	370	360	69	85	71	65	70	78	148
10-14	0	0	0	0	0	0	0	0	0	0	0	0	0	0	0	0	0
15-19	2	4	0	0	0	3	4	2	12	9	2	3	1	2	1	1	2
20-24	18	10	16	15	2	9	19	25	71	59	17	17	13	11	15	10	25
25-29	28	30	25	21	18	25	18	27	104	103	20	20	22	23	21	22	43
30-34	28	21	22	22	33	26	33	29	109	98	16	30	18	17	19	29	48
35-39	23	16	14	22	26	23	15	16	65	77	12	12	16	10	13	15	28
40-44	5	2	2	2	13	5	1	4	9	13	2	3	1	2	0	1	1
45-49	0	0	0	0	1	0	0	1	0	1	0	0	0	0	1	0	1
<i>Illegitimate</i>	61	62	49	66	67	60	90	79	267	267	71	57	52	57	69	71	140
10-14	0	0	0	0	1	1	0	0	1	1	0	0	0	0	0	0	0
15-19	7	22	10	11	16	9	18	18	51	60	13	10	6	13	9	15	24
20-24	16	17	15	10	18	17	20	21	69	65	20	18	17	17	30	21	51
25-29	20	9	13	23	10	14	25	18	67	64	10	11	16	10	12	17	29
30-34	13	7	13	11	13	10	16	12	48	40	16	12	9	10	13	10	23
35-39	2	5	3	8	8	8	8	8	21	29	9	5	3	7	3	7	10
40-44	3	2	1	3	1	2	3	2	8	8	2	1	1	0	2	1	3
45-49	0	0	0	0	0	0	0	0	0	0	1	0	0	0	0	0	0
<i>Unknown</i>	0	0	0	0	1	0	0	0	1	1	1	0	0	0	0	0	0
DEATHS	65	48	70	48	60	55	81	50	276	201	70	67	51	56	78	59	381
< 1 yr.	2	0	0	0	1	0	1	0	4	0	0	1	1	1	0	0	3
1-49 yrs.	11	9	10	5	11	7	17	2	49	23	12	9	10	8	18	2	59
50-59 yrs.	5	7	12	4	5	9	8	8	30	28	8	2	9	9	12	9	49
60-69 yrs.	19	9	19	12	9	13	6	10	53	44	19	11	9	9	15	14	77
70-79 yrs.	14	6	17	10	15	6	19	11	65	33	18	18	7	5	16	13	77
80-89 yrs.	12	13	11	13	15	14	15	10	53	50	7	16	13	15	12	14	77
90 yrs. +	2	4	1	4	4	6	15	9	22	23	6	10	2	9	5	7	39
DOMICILIATION	392	399	374	457	466	574	318	406	1550	1836	307	344	313	368	484	545	2361
Dutch born in Aruba/ N.A.	99	83	90	93	124	136	95	89	408	401	91	91	106	88	144	128	648
Dutch born in the Netherlands	28	27	54	38	112	95	58	49	252	209	49	42	40	45	101	97	374
Dutch born elsewhere	26	18	16	24	20	30	18	13	80	85	17	27	14	23	36	24	141
Foreign	225	259	198	286	197	296	136	249	756	1090	146	182	149	207	202	294	1180
Unknown	14	12	16	16	13	17	11	6	54	51	4	2	4	5	1	2	18
DEPARTURES	234	225	262	263	543	605	231	239	1270	1332	191	180	258	290	603	666	2188
Dutch born in Aruba/ N.A.	127	132	144	117	307	368	135	130	713	747	126	96	131	135	392	434	1314
Dutch born in the Netherlands	33	26	47	52	126	106	30	29	236	213	22	21	54	56	114	110	377
Dutch born elsewhere	34	29	37	45	66	71	29	35	166	180	28	34	44	44	62	74	286
Foreign	40	38	34	49	44	59	37	45	155	191	15	29	29	55	35	48	211
Unknown	0	0	0	0	0	1	0	0	0	1	0	0	0	0	0	0	0
MARRIAGES																	
	<i>1st Q</i>		<i>2nd Q</i>		<i>3rd Q</i>		<i>4th Q</i>		<i>TOTAL</i>		<i>1st Q</i>		<i>2nd Q</i>		<i>3rd Q</i>		<i>Total</i>
Both partners Dutch born in Aruba/ N.A.	23		30		33		66		152		16		36		45		97
Both partners Dutch born in the Netherlands	0		0		0		0		2		0		5		0		5
Both partners Dutch born elsewhere	11		6		11		5		33		1		1		11		13
Mixed Dutch	4		3		14		13		34		10		4		8		22
Mixed Dutch-foreign	43		35		45		43		166		18		18		38		74
Both partners foreign	17		13		13		21		68		6		4		15		25
Unknown	14		21		33		21		89		21		46		70		137
Total	112		110		153		169		544		72		114		187		373
DIVORCES																	
	<i>1st Q</i>		<i>2nd Q</i>		<i>3rd</i>												

Fig. 1. Population pyramid 2001

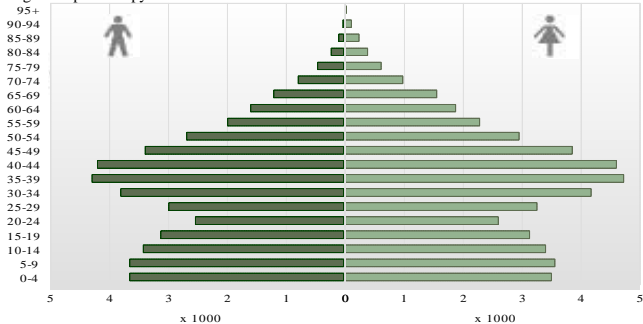


Fig. 2. Migration per quarter 2001-2002

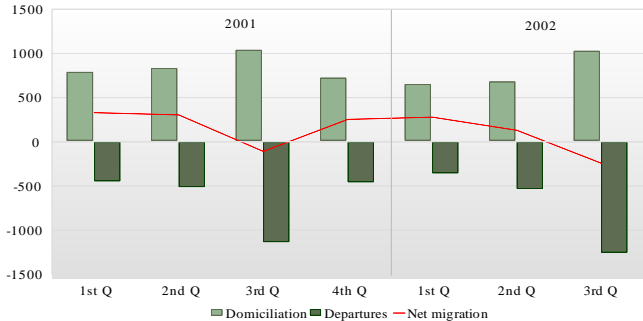


Fig. 3. Livebirths and deaths per quarter 2001-2002

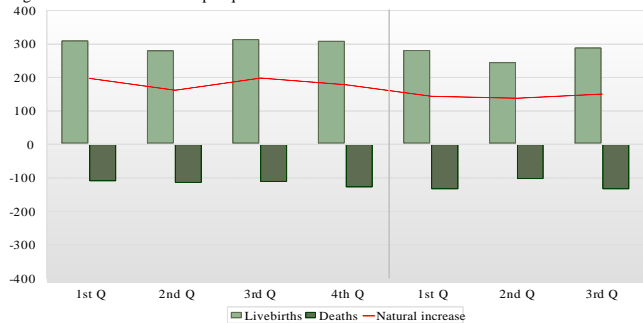


Fig. 4. Deaths by sex and age-group 2001

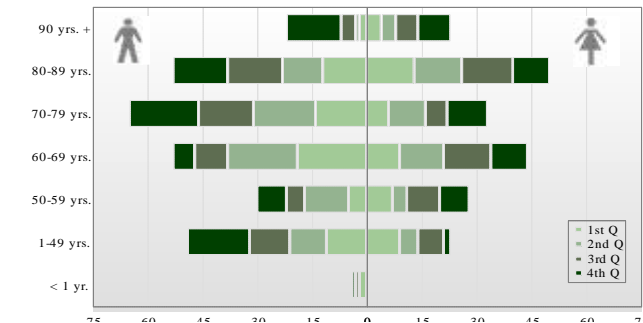


Fig. 5. Migration by nationality and sex 2001

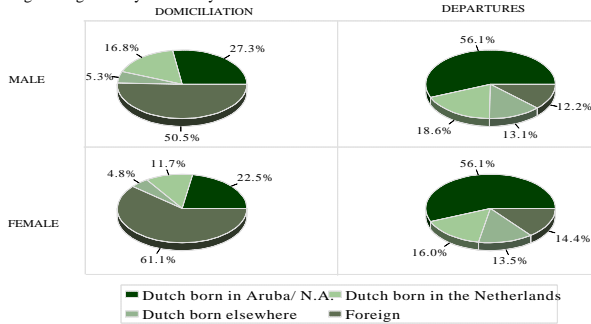


Fig. 6. Marriages and divorces by nationality of partners 2001

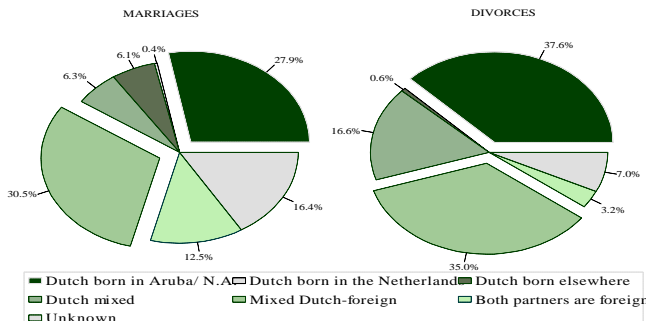
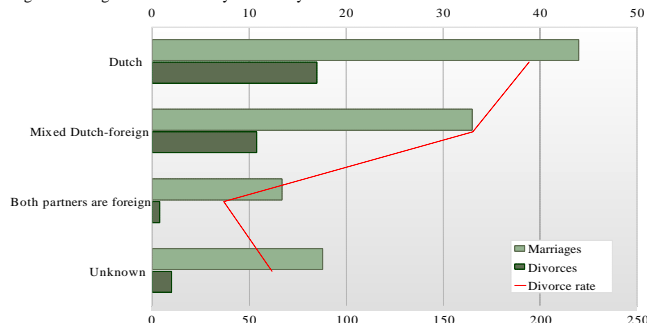


Fig. 7. Marriages and divorces by nationality 2001



Where to order:

Central Bureau of Statistics
L.G. Smith Boulevard 160,
Oranjestad, ARUBA
Dutch Caribbean
Phone: (297-8) 37433

ARUBA

Quarterly Demographic Bulletin

December 2002

Central Bureau of Statistics

Statistics for progress