

November 6, 2008

## Consumer Price Index, base September 2000 October 2008

*The Central Bureau of Statistics presents the most important findings for the Consumer Price Index for the month of October 2008.*

- The Consumer Price Index (CPI) for October 2008 is **141.63**, a decrease of **0.73%** compared with the index of September 2008 (**142.67**).
- The percentage change for the first 10 months (January to October 2008) of the CPI is 6.71, compared to 7.22 for the same period of last year.
- The percentage change of the CPI over the last 12 months (October 2007 and October 2008) is 9.69, an increase of 2.42 percentage points compared to the percentage change for the same period of last year (7.27).
- The period average percentage change of the CPI for the period October 2007 - October 2008 is 9.33, an increase of 4.51 percentage points compared to the period average percentage change over the period October 2006 - October 2007 (4.82).

**Table 1 Overview percentage change CPI**

Period		2008	2007
Current month	Sep-Oct	-0.73	0.31
Year-to-date	Jan-Oct	6.71	7.22
Last 12 months 1	Oct-Oct	9.69	7.27
Last 24 months 2	Oct-Oct	9.33	4.82

Source: Central Bureau of Statistics Aruba

- 1 End of period inflation  
2 Period average inflation

In October the sectors that show the highest positive percentage changes in the CPI are:

CPI	-0.73
• Transport and communication	1.77
• Food	0.96
• Leisure and recreational goods	-0.48
• Clothing and footwear	-1.17
• Housing	-3.74

**Table 2 Percentage change by sector**

Sector	Percentage changes			
	Monthly Sep	Year to date Jan - Sep	End of period Sep 07 - Sep 08	Period average Sep 07 - Sep 08
<b>Consumer Price Index</b>	<b>-0.73</b>	<b>6.71</b>	<b>9.69</b>	<b>9.33</b>
Food	0.96	11.13	12.73	9.19
Beverages and tobacco products	0.36	2.71	2.27	4.66
Clothing and footwear	-1.17	-0.16	5.83	6.15
Housing	-3.74	8.85	13.11	16.17
Household operation	-0.06	3.79	5.45	3.60
Health	0.00	0.39	0.41	0.20
Transport and communication	1.77	8.71	11.58	8.95
Leisure and recreational goods	-0.48	4.49	6.46	6.81
Goods and services n.e.c.	-0.26	4.18	5.75	6.12

Source: Central Bureau of Statistics Aruba

## Monthly Percentage Change

The prices of goods and services in the consumption basket of the CPI show a decrease of **0.73%** for the month of October 2008 compared to the prices observed in September 2008.

The consumption basket of the CPI consists of 374 goods and services. Compared to September, 37.7% of these products had an increase in price, while 38.5% showed a decrease and the remaining 23.8% had no change in price.

In October 2008, the sectors that had the greatest influence in the percentage change of the CPI are:

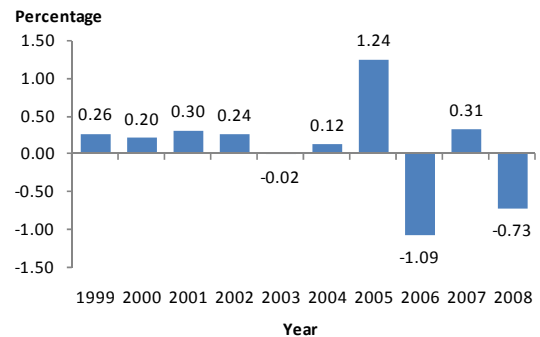
- Transport and communication (0.56), where increases in prices were registered in the categories “Own transport” and “Vehicle supplies”.
- Food (0.30), where increases in prices were mainly registered in the categories “Take away beverages and meals” and “Grain and grain products”.
- Clothing and footwear (-0.19), where a decrease in prices was registered in the category “Clothing and accessories”.
- Housing (-1.30), where decreases in prices were registered in the categories “Water Supply” and “Domestic Fuel and power”.

**Table 3 Categories with the greatest effect on the CPI of October 2008**

Category	Monthly change	Effect
Own transport	2.72	0.28
Vehicle supplies	2.38	0.28
Take away beverages and meals	2.97	0.23
Grain and grain products	0.34	0.03
Clothing and accessories	-1.51	-0.23
Water Supply	-8.04	-0.55
Domestic Fuel and power	-6.69	-0.79

Source: Central Bureau of Statistics Aruba

**Graph 1 Monthly percentage change of the CPI for October, 1999 – 2008**

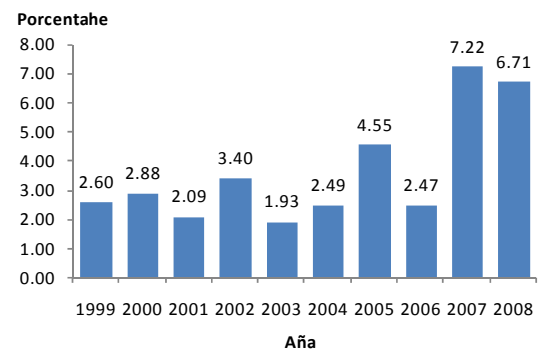


Graph 1 shows that the monthly percentage change of the CPI decreased by 1.04 percentage points to -0.73 in October of 2008 from (0.31) in October of 2007.

## Year-to-date Percentage Change

The year-to-date percentage change from January to October 2008 is 6.71 (Table 1). The sectors which had the greatest effect on the percentage change of this period due to changes registered in the prices of goods and services are Housing (2.00), Food (1.75), Transport and communication (1.65) and Goods and services n.e.c. (0.45).

**Graph 2 Year-to-date percentage change of the CPI for January to October, 1999 – 2008**



The year-to-date percentage change of the CPI for October 2008 amounts to 6.71, a decrease of 0.51 percentage points compared to the figure recorded in October 2007 (graph 2).

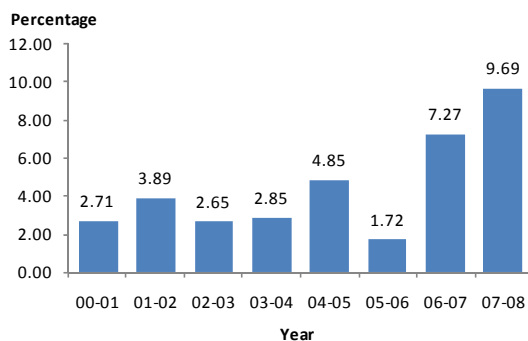
## Percentage Changes last 12 and 24 Months

**Table 4 Percentage changes by month, 2007 – 2008**

Sector	Percentage changes							
	2007				2008			
	Monthly	Year-to-date	End of period	Period average	Monthly	Year-to-date	End of period	Period average
January	2.62	2.62	4.82	3.66	0.63	0.63	8.06	6.27
February	0.04	2.67	4.14	3.63	0.64	1.27	8.71	6.66
March	0.69	3.38	5.03	3.68	0.47	1.75	8.47	6.94
April	0.19	3.58	4.71	3.76	0.50	2.26	8.80	7.28
May	0.91	4.52	4.41	3.80	0.83	3.11	8.72	7.64
June	1.80	6.40	5.97	3.96	1.49	4.64	8.38	7.84
July	-0.32	6.06	5.42	4.08	1.35	6.06	10.20	8.25
August	0.68	6.79	5.68	4.21	1.60	7.75	11.21	8.71
September	0.10	6.89	5.77	4.36	-0.24	7.50	10.84	9.13
October	0.31	7.22	7.27	4.82	-0.73	6.71	9.69	9.33
November	1.15	8.45	8.54	5.37				
December	1.62	10.21	10.21	6.00				

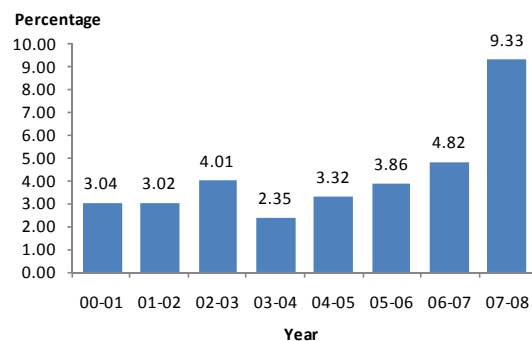
Source: Central Bureau of Statistics Aruba

**Graph 3 Percentage change of the CPI (last 12 months) October to October, 2000 – 2008**



The percentage change of the CPI (last 12 months/end of period) of 9.69, is the highest change registered in the last 8 years for the month October.

**Graph 4 Average Percentage change of the CPI (last 24 months) October to October, 2000 - 2008**



The average percentage change of the CPI for the month October (last 24 months/ period average) has been increasing since 2003 and reached 9.33 in October 2008, which is 4.51 percentage points higher than the year before.

**APPENDIX 1**
**Monthly & Yearly Changes (%) for October 2008 for the Consumer Price Index, Total Population (Sep 2000 = 100)**

DESCRIPTION	WEIGHT coefficient	2007	2007	2009	2010	Monthly change Sep-Oct	YTD change Jan-Oct	Yearly change Oct-Oct	Average change Oct 07-08
		Oct	Dec	Sep	Oct				
<b>Food</b>	<b>1,469</b>	<b>138.9</b>	<b>140.9</b>	<b>155.1</b>	<b>156.6</b>	<b>0.96</b>	<b>11.13</b>	<b>12.73</b>	<b>9.19</b>
Grain and grain products	233	124.6	125.7	145.7	146.2	0.34	16.31	17.29	9.48
Meat, poultry, game, fish and shellfish	320	137.3	136.9	152.8	153.4	0.35	12.04	11.68	10.00
Fats and oils	28	130.6	132.5	157.7	159.6	1.14	20.45	22.13	10.62
Dairy products	149	153.0	166.7	184.6	184.2	-0.22	10.48	20.35	22.66
Potatoes, vegetables and fruit	176	193.0	194.6	219.7	221.2	0.70	13.65	14.59	13.28
Sugar, sugar products and chocolate	30	109.7	112.6	120.2	121.8	1.33	8.15	11.04	3.37
Ready to eat meals	29	115.9	116.7	115.7	115.9	0.14	-0.68	0.01	2.95
Take away beverages and meals	399	126.8	127.7	132.8	136.7	2.97	7.09	7.83	1.28
Groceries n.e.c.	104	127.3	127.3	137.3	137.5	0.15	8.02	8.04	7.17
<b>Beverages and tobacco products</b>	<b>219</b>	<b>131.6</b>	<b>131.1</b>	<b>134.1</b>	<b>134.6</b>	<b>0.36</b>	<b>2.71</b>	<b>2.27</b>	<b>4.66</b>
Beverages	192	131.2	130.5	133.3	134.2	0.67	2.81	2.30	4.77
Tobacco products	27	135.0	135.0	140.2	137.8	-1.72	2.07	2.07	3.92
<b>Clothing and footwear</b>	<b>1,086</b>	<b>129.8</b>	<b>137.5</b>	<b>138.9</b>	<b>137.3</b>	<b>-1.17</b>	<b>-0.16</b>	<b>5.83</b>	<b>6.15</b>
Clothing and accessories	881	131.9	141.1	143.9	141.8	-1.51	0.44	7.49	7.27
Footwear	204	120.6	122.0	117.5	118.2	0.62	-3.10	-1.98	0.80
<b>Housing</b>	<b>2,296</b>	<b>143.3</b>	<b>148.9</b>	<b>168.4</b>	<b>162.1</b>	<b>-3.74</b>	<b>8.85</b>	<b>13.11</b>	<b>16.17</b>
Property rent	717	137.3	138.1	141.8	142.2	0.29	2.94	3.54	3.53
Domestic fuel and power	659	149.8	160.5	193.5	180.5	-6.69	12.44	20.47	28.54
Property maintenance goods	500	128.1	130.1	135.9	135.9	-0.03	4.42	6.10	5.83
Garden supplies	61	178.5	182.2	195.2	195.8	0.32	7.50	9.68	6.66
Water supply	358	158.6	169.8	216.5	199.1	-8.04	17.21	25.52	33.72
<b>Household operation</b>	<b>1,002</b>	<b>122.1</b>	<b>124.0</b>	<b>128.8</b>	<b>128.7</b>	<b>-0.06</b>	<b>3.79</b>	<b>5.45</b>	<b>3.60</b>
Furniture and lighting	133	104.5	102.1	103.9	104.0	0.02	1.80	-0.55	-7.52
Floor coverings and household textiles	113	148.3	155.5	164.3	163.8	-0.30	5.37	10.50	13.69
Home appliances and tools	163	96.1	96.0	97.8	97.5	-0.35	1.56	1.37	-8.32
Household equipment and utensils	75	119.8	122.1	127.3	127.9	0.44	4.69	6.76	4.22
Household services	118	121.0	120.5	126.7	127.0	0.24	5.41	4.93	5.62
Housekeeping charges	227	130.3	133.7	144.1	143.4	-0.51	7.27	10.08	9.32
Household supplies	173	134.0	137.5	136.1	136.8	0.52	-0.50	2.11	4.19
<b>Health</b>	<b>88</b>	<b>99.9</b>	<b>99.9</b>	<b>100.3</b>	<b>100.3</b>	<b>0.00</b>	<b>0.39</b>	<b>0.41</b>	<b>0.20</b>
Health services	88	99.9	99.9	100.3	100.3	0.00	0.39	0.41	0.20
<b>Transport and communication</b>	<b>1,967</b>	<b>116.8</b>	<b>119.9</b>	<b>128.1</b>	<b>130.3</b>	<b>1.77</b>	<b>8.71</b>	<b>11.58</b>	<b>8.95</b>
Own transport	544	104.8	107.7	121.4	124.7	2.72	15.77	18.92	11.99
Vehicle supplies	712	140.2	146.6	158.3	162.0	2.38	10.54	15.57	13.18
Public transport costs	249	105.9	106.4	107.8	107.6	-0.13	1.12	1.58	2.15
Communication services	462	100.7	100.4	100.3	100.4	0.03	0.01	-0.34	0.24
<b>Leisure and recreational goods</b>	<b>799</b>	<b>122.4</b>	<b>124.7</b>	<b>130.9</b>	<b>130.3</b>	<b>-0.48</b>	<b>4.49</b>	<b>6.46</b>	<b>6.81</b>
Costs incurred for recreational purposes	465	122.8	124.9	130.9	130.1	-0.58	4.20	5.95	6.85
Admission charges to events and venues	89	129.1	132.7	142.7	141.6	-0.73	6.71	9.69	9.33
Publications (no study material)	51	129.9	132.7	133.2	133.3	0.03	0.47	2.60	3.89
Formal education fees	193	116.1	118.3	124.8	124.5	-0.23	5.25	7.25	6.30
<b>Goods and services n.e.c.</b>	<b>1,074</b>	<b>120.8</b>	<b>122.7</b>	<b>128.1</b>	<b>127.8</b>	<b>-0.26</b>	<b>4.18</b>	<b>5.75</b>	<b>6.12</b>
Toiletries and cosmetics	219	122.1	122.6	125.5	126.4	0.72	3.10	3.53	6.05
Insurance services	283	104.6	104.6	104.6	104.6	0.00	0.00	0.00	0.00
Other goods and services n.e.c.	438	128.2	131.3	140.2	139.3	-0.68	6.07	8.66	8.50
Money transfers	103	129.1	132.7	142.7	141.6	-0.73	6.71	9.69	9.33
Unknown articles or n.e.c.	29	129.1	132.7	142.7	141.6	-0.73	6.71	9.69	9.33
<b>TOTAL INDEX</b>	<b>10,000</b>	<b>129.1</b>	<b>132.7</b>	<b>142.7</b>	<b>141.6</b>	<b>-0.73</b>	<b>6.71</b>	<b>9.69</b>	<b>9.33</b>

Source: Central Bureau of Statistics Aruba

APPENDIX 2

Effect on the Consumer Price Index per sector and category for October 2008 (Sep 2000 = 100)

DESCRIPTION	WEIGHT coefficient	Effect Sep-Oct	Effect Jan-Oct	Effect Oct-Oct	Effect Oct 07-08
<b>Food</b>	<b>1,469</b>	<b>0.30</b>	<b>1.75</b>	<b>1.98</b>	<b>1.35</b>
Grain and grain products	233	0.03	0.41	0.44	0.24
Meat, poultry, game, fish and shellfish	320	0.02	0.44	0.44	0.35
Fats and oils	28	0.01	0.06	0.07	0.03
Dairy products	149	0.00	0.17	0.31	0.35
Potatoes, vegetables and fruit	176	0.01	0.25	0.26	0.22
Sugar, sugar products and chocolate	30	0.01	0.03	0.04	0.01
Ready to eat meals	29	0.00	0.00	0.00	0.01
Take away beverages and meals	399	0.23	0.30	0.34	0.06
Groceries n.e.c.	104	0.00	0.09	0.09	0.08
<b>Beverages and tobacco products</b>	<b>219</b>	<b>0.02</b>	<b>0.07</b>	<b>0.06</b>	<b>0.11</b>
Beverages	192	0.02	0.06	0.05	0.10
Tobacco products	27	-0.01	0.01	0.01	0.01
<b>Clothing and footwear</b>	<b>1,086</b>	<b>-0.19</b>	<b>0.00</b>	<b>0.61</b>	<b>0.62</b>
Clothing and accessories	881	-0.23	0.06	0.65	0.60
Footwear	204	0.04	-0.07	-0.04	0.02
<b>Housing</b>	<b>2,296</b>	<b>-1.30</b>	<b>2.00</b>	<b>3.07</b>	<b>4.00</b>
Property rent	717	0.04	0.22	0.27	0.27
Domestic fuel and power	659	-0.79	0.84	1.41	2.03
Property maintenance goods	500	0.00	0.24	0.33	0.32
Garden supplies	61	0.00	0.04	0.06	0.05
Water supply	358	-0.55	0.66	0.99	1.32
<b>Household operation</b>	<b>1,002</b>	<b>0.00</b>	<b>0.43</b>	<b>0.57</b>	<b>0.27</b>
Furniture and lighting	133	0.00	0.04	0.00	-0.12
Floor coverings and household textiles	113	0.00	0.08	0.14	0.14
Home appliances and tools	163	-0.01	0.03	0.03	-0.16
Household equipment and utensils	75	0.01	0.04	0.06	0.03
Household services	118	0.01	0.07	0.06	0.07
Housekeeping charges	227	-0.02	0.18	0.25	0.23
Household supplies	173	0.02	-0.01	0.04	0.07
<b>Health</b>	<b>88</b>	<b>0.00</b>	<b>0.00</b>	<b>0.00</b>	<b>0.00</b>
Health services	88	0.00	0.00	0.00	0.00
<b>Transport and communication</b>	<b>1,967</b>	<b>0.56</b>	<b>1.65</b>	<b>2.22</b>	<b>1.74</b>
Own transport	544	0.28	0.92	1.12	0.72
Vehicle supplies	712	0.28	0.70	1.09	0.96
Public transport costs	249	0.00	0.02	0.04	0.05
Communication services	462	0.00	0.00	-0.02	0.01
<b>Leisure and recreational goods</b>	<b>799</b>	<b>-0.07</b>	<b>0.37</b>	<b>0.55</b>	<b>0.56</b>
Costs incurred for recreational purposes	465	-0.05	0.20	0.29	0.33
Admission charges to events and venues	89	-0.01	0.06	0.09	0.09
Publications (no study material)	51	0.00	0.00	0.02	0.02
Formal education fees	193	-0.01	0.10	0.15	0.12
<b>Goods and services n.e.c.</b>	<b>1,074</b>	<b>-0.05</b>	<b>0.45</b>	<b>0.63</b>	<b>0.69</b>
Toiletries and cosmetics	219	0.03	0.08	0.08	0.14
Insurance services	283	0.00	0.00	0.00	0.00
Other goods and services n.e.c.	438	-0.06	0.28	0.41	0.41
Money transfers	103	-0.01	0.07	0.11	0.11
Unknown articles or n.e.c.	29	0.00	0.02	0.03	0.03
<b>TOTAL INDEX</b>	<b>10,000</b>	<b>-0.73</b>	<b>6.71</b>	<b>9.69</b>	<b>9.33</b>

Source: Central Bureau of Statistics Aruba