

20 May 2008

## Consumer Price Index, base September 2000 April 2008

*The Central Bureau of Statistics presents the most important findings for the Consumer Price Index for the month of April 2008.*

- The consumer price index for April 2008 is **135.72**, this is **0.50%** higher compared with the index of March 2008 (**135.04**).
- The percentage change for the first 4 months (January to April 2008) of the consumer price index is 2.26%, compared to 3.58% for the same period of last year.
- The percentage change over the last 12 months (April 2007 to April 2008) is 8.80%, an increase of 4.06 percentage points compared to the percentage change for the same period of last year (4.74%).
- The period average percentage change CPI for the period April 2007 - April 2008 is 7.28%, an increase of 3.50 percentage points compared to the period average percentage change over the period April 2006 - April 2007 (3.78%).

**Table 1 Overview percentage change CPI**

Period		2008	2007
Current month	Mar-Apr	0.50	0.19
Year to date	Jan-Apr	2.26	3.58
Last 12 months <sup>1</sup>	Apr-Apr	8.80	4.74
Last 24 months <sup>2</sup>	May-Apr	7.28	3.78

Source: Central Bureau of Statistics Aruba

<sup>1</sup> End of period inflation

<sup>2</sup> Period average inflation

In March the sectors that show a higher positive percentage change compared to the change of the CPI (0.50%) are:

- Transport and communication
- Clothing and footwear group
- Beverages and tobacco products
- Food
- Leisure and recreational goods

**Table 2 Percentage change by sector**

Sector	Percentage changes			
	Monthly April	Year to date January - April	End of period April 07 - April 08	Period average May 06 - April 08
<b>Consumer Price Index</b>	<b>0.50</b>	<b>2.26</b>	<b>8.80</b>	<b>7.28</b>
Food	0.43	2.69	7.95	9.77
Beverages and tobacco products	0.59	1.68	4.15	11.94
Clothing and footwear	0.76	2.66	5.38	2.44
Housing	(0.02)	2.30	17.70	10.80
Household operation	(0.10)	1.12	2.20	4.58
Health	0.05	0.38	0.34	(0.05)
Transport and communication	1.90	3.01	7.21	6.07
Leisure and recreational goods	0.13	1.66	6.86	6.19
Goods and services n.e.c.	0.05	1.43	5.51	5.61

Source: Central Bureau of Statistics Aruba

## Monthly Percentage Change

The prices of goods and services in the consumption basket of the CPI show an increase of **0.50%** for the month of April 2008 compared to the prices observed in March 2008.

The consumption basket of the CPI consists of 374 goods and services. Compared to March, 53% of these products had an increase in price, while 29% showed a decrease and the remaining 18% had no change in price.

In April 2008, the sectors that had the most influence in the percentage change of the CPI are:

- Transport and communication, where increases in prices were mainly registered in the categories of own transport and vehicle supplies.
- Clothing and footwear, where increases in prices were mainly registered in the category footwear.
- Food, where decreases in prices were mainly registered in the category take away beverages and meals.

### Positive Effect

Category	Monthly change	Effect
Own transport	3.38	0.18
Vehicle supplies	2.40	0.15
Footwear	2.78	0.06
Meat, poultry, game, fish and shellfish	1.52	0.05
Dairy products	2.90	0.04

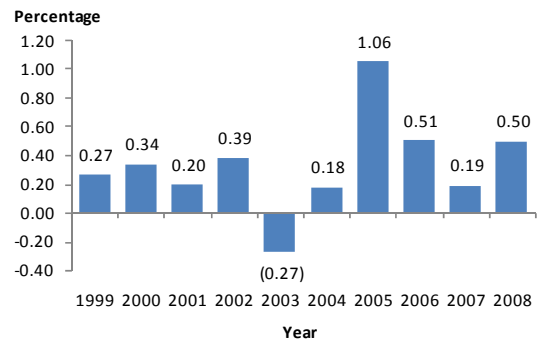
Source: Central Bureau of Statistics Aruba

### Negative Effect

Category	Monthly change	Effect
Take away beverages and meals	-0.96	-0.04
Property maintenance goods	-0.43	-0.02
Household supplies	-1.03	-0.02
Household services	-1.82	-0.01
Domestic Fuel and power	-0.15	-0.01

Source: Central Bureau of Statistics Aruba

**Graph 1 Monthly percentage change of the CPI for April, 1999 – 2008**

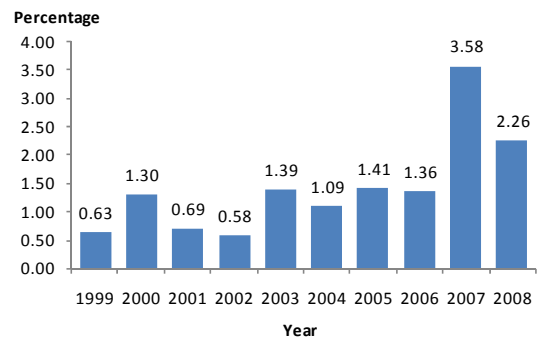


When analyzing the series of the Consumer Price Index for the month of April for the last 10 years, the one of 2008 had the third highest change.

## Year to date Percentage Change

The year to date percentage change from January to April 2008 is 2.26% (Table 1). The sectors which mainly had effect on the percentage change of this period due to changes registered in the prices of goods and services are Transport and communication (0.58%), Housing (0.52%) and Food (0.42%).

**Graph 2 Year to date percentage change of the CPI for January to April, 1999 – 2008**



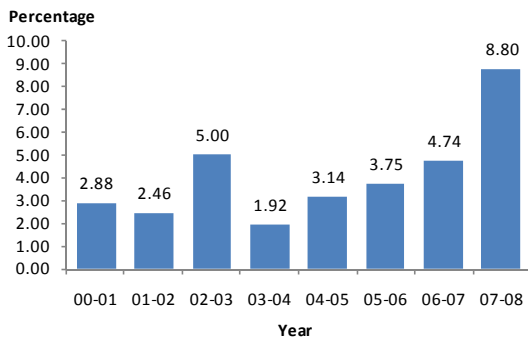
## Percentage Changes last 12 and 24 Months

Table 4 Percentage changes by month, 2007 – 2008

Sector	Percentage changes							
	2007				2008			
	Monthly	Year to date	End of period	Period average	Monthly	Year to date	End of period	Period average
	April	Jan-Apr	Apr06-Apr07	May05-Apr07	April	Jan-Apr	Apr07-Apr08	May06-Apr08
January	2.62	2.62	4.83	3.66	0.63	0.63	8.06	6.28
February	0.04	2.67	4.16	3.63	0.64	1.27	8.71	6.66
March	0.70	3.38	5.06	3.70	0.47	1.75	8.47	6.94
April	0.19	3.58	4.74	3.78	0.50	2.26	8.80	7.28
May	0.91	4.52	4.37	3.81				
June	1.80	6.40	5.98	3.97				
July	(0.32)	6.06	5.39	4.10				
August	0.68	6.78	5.67	4.22				
September	0.09	6.88	5.77	4.36				
October	0.32	7.22	7.25	4.82				
November	1.15	8.45	8.57	5.37				
December	1.62	10.21	10.21	6.00				

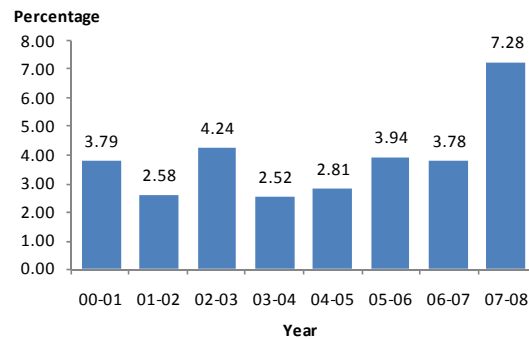
Source: Central Bureau of Statistics Aruba

Graph 3 Percentage change of the CPI (last 12 months) April to April, 2000 – 2008



The percentage change of the CPI (last 12 months/end of period) 8.80%, is the highest change registered in the last 8 years.

Graph 4 Average Percentage change of the CPI (last 24 months) May to April, 2000 - 2008



The average percentage change of the CPI (last 24 months/ period average) 7.28 %, is also the highest change registered in the last 8 years.