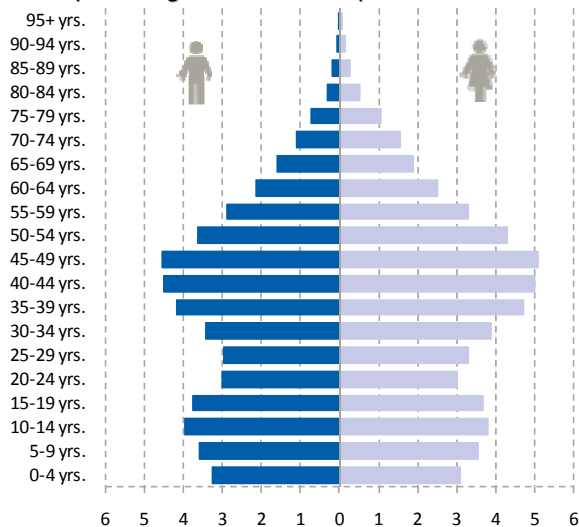
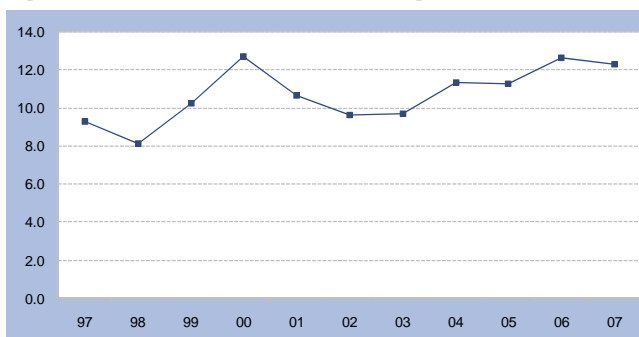


- The population growth in 2007 is 9.96 per thousand, totaling 104,494 persons.
- 48 percent of the population is male (49,844) and 52 percent is female (54,339).
- At the end of 2000 there were 7,028 children aged 0-4 yrs. By the end of 2007 they were 6,352. That is 9.6 percent less than in 2000.
- The elderly population (60+) on the other hand increased with 38.2 percent during 2000 thru 2007.

**Figure 1. Population growth 2000-3rd quarter 2007**


- 1,239 babies were registered at the Population Registry Office during 2007.
- 152 of the registered babies were born to a teenage mother.
- 56 percent of the registered babies were born out of wedlock.
- 64 percent of the babies are born to a local woman.

**Figure 2. Absolute number of babies registered 1997-2007**

**Table 1 Population by age and sex**

	End of year			4th Q 2007			Index (2000=100)
	2004	2005	2006	Male	Female	Total	
0-4 yrs.	6,538	6,506	6,379	3,263	3,089	6,352	-9.63
5-9 yrs.	7,418	7,459	7,339	3,576	3,565	7,141	-0.69
10-14 yrs.	7,426	7,698	7,736	3,957	3,813	7,770	14.38
15-19 yrs.	6,865	7,135	7,258	3,750	3,665	7,415	19.53
20-24 yrs.	5,529	5,818	5,980	2,992	3,025	6,017	17.36
25-29 yrs.	6,209	6,359	6,349	2,969	3,283	6,253	-2.04
30-34 yrs.	7,915	7,807	7,477	3,422	3,866	7,288	-7.17
35-39 yrs.	8,763	8,872	8,910	4,165	4,715	8,880	-2.68
40-44 yrs.	9,775	9,932	9,765	4,495	5,006	9,500	11.46
45-49 yrs.	8,516	9,018	9,385	4,557	5,073	9,630	37.35
50-54 yrs.	6,881	7,253	7,589	3,650	4,276	7,926	44.97
55-59 yrs.	5,156	5,530	5,860	2,905	3,289	6,194	49.79
60-64 yrs.	3,873	4,097	4,369	2,145	2,489	4,634	32.61
65-69 yrs.	3,184	3,324	3,366	1,588	1,888	3,476	31.58
70-74 yrs.	2,288	2,404	2,576	1,100	1,563	2,663	54.82
75-79 yrs.	1,335	1,480	1,591	738	1,048	1,786	68.76
80-84 yrs.	782	794	843	330	498	829	15.37
85-89 yrs.	421	443	400	174	284	458	20.95
90-94 yrs.	179	175	192	49	144	193	18.89
95+ yrs.	57	74	93	17	72	89	79.14
Total	99,109	102,178	103,459	49,844	54,650	104,494	14.75

Source: Population Registry Office

**Table 2 Live births by age of mother**

	2004	2005	2006	2007				Total
				1st Q	2nd Q	3rd Q	4th Q	
< 15 yrs.	8	1	3	0	1	0	2	3
15-19 yrs.	127	138	152	40	33	44	32	149
20-24 yrs.	256	290	309	71	68	93	73	305
25-29 yrs.	322	335	316	85	75	81	73	314
30-34 yrs.	283	258	234	57	71	84	68	280
35-39 yrs.	162	170	165	33	40	38	38	149
40-44 yrs.	33	37	47	11	10	7	8	36
45-49 yrs.	2	5	1	1	0	0	1	2
50+ yrs.	0	0	0	0	0	0	0	0
Not reported	0	0	0	0	1	0	0	1
Total	1,193	1,234	1,227	298	299	347	295	1,239

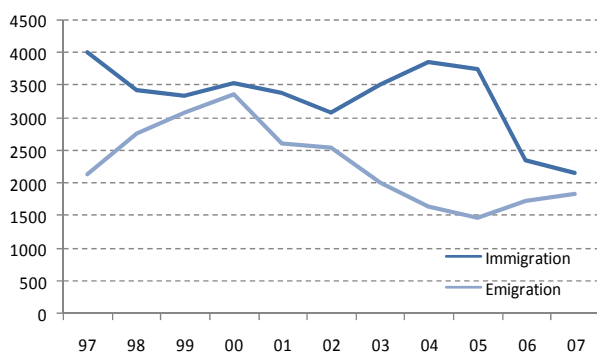
Source: Population Registry Office

**Table 3 Deaths by age**

	2004	2005	2006	2007				Total
				1st Q	2nd Q	3rd Q	4th Q	
< 1	3	6	8	3	0	1	0	4
1-49	71	66	70	17	16	13	22	68
50-59	56	60	43	13	18	20	19	70
60-69	104	82	115	33	18	27	22	100
70-79	118	119	143	26	37	24	33	120
80-89	101	116	114	26	23	24	21	94
90+ yrs.	49	33	44	13	17	18	17	65
Total	502	482	537	131	129	127	134	521

Source: Population Registry Office

- In 2007 2,157 immigrants registered at the Population Registry Office.
- 39 percent of the immigrants were foreign-born.
- 51.9 percent of the immigrants were female.
- 75 percent of the immigrants were in the age group between 15 thru 59 years.
- 1,839 persons left the island during 2007.
- 68.8 percent of the emigrants indicated to be migrating to the Netherlands.

**Figure 3. Migration 1997-2007 (absolute)**

**Table 6 Marriages by Aruban status and place of marriage**

	2004	2005	2006	2007				Total
				1st Q	2nd Q	3rd Q	4th Q	
Both partners residents, married in Aruba	431	430	351	58	59	120	142	379
Both partners residents, married elsewhere	26	42	27	9	9	16	6	40
Both partners non-residents, married in Aruba	578	520	460	73	132	139	138	482
Male resident, married elsewhere with non-resident Female	82	95	58	3	7	10	5	25
Male resident, married in Aruba with non-resident Female	20	7	23	1	2	6	5	14
Female resident, married elsewhere with non-resident Male	29	64	36	18	18	11	6	53
Female resident, married in Aruba with non-resident Male	18	3	29	6	1	7	6	20
Unknown	0	74	22	0	0	0	0	0
<b>Total</b>	<b>1,184</b>	<b>1,235</b>	<b>1,006</b>	<b>168</b>	<b>228</b>	<b>309</b>	<b>308</b>	<b>1,013</b>

Source: Population Registry Office

**Table 4 Domiciliation by nationality and place of birth**

	2004	2005	2006	2007				Total
				1st Q	2nd Q	3rd Q	4th Q	
Dutch born in Aruba/Neth. Ant.	1,226	1,192	847	130	134	216	158	638
Dutch born in the Netherlands	682	814	623	85	96	164	120	465
Dutch born elsewhere	211	216	192	34	37	39	33	143
Foreign-born	1,703	1,525	600	131	154	244	310	839
Unknown	36	9	79	21	12	15	24	72
<b>Total</b>	<b>3,858</b>	<b>3,756</b>	<b>2,341</b>	<b>401</b>	<b>433</b>	<b>678</b>	<b>645</b>	<b>2,157</b>

Source: Population Registry Office

**Table 5 Departures by nationality and place of birth**

	2004	2005	2006	2007				Total
				1st Q	2nd Q	3rd Q	4th Q	
Dutch born in Aruba/Neth. Ant.	792	671	813	130	171	486	134	921
Dutch born in the Netherlands	409	424	513	74	109	216	56	455
Dutch born elsewhere	201	151	159	36	39	96	31	202
Foreign-born	245	220	237	43	75	74	68	260
Unknown	2	3	0	0	1	0	0	1
<b>Total</b>	<b>1,649</b>	<b>1,469</b>	<b>1,722</b>	<b>283</b>	<b>395</b>	<b>872</b>	<b>289</b>	<b>1,839</b>

Source: Population Registry Office

**Table 7 Divorces by Aruban status and place of divorce**

	2004	2005	2006	2007				Total
				1st Q	2nd Q	3rd Q	4th Q	
Both partners residents, divorced in Aruba	402	342	455	104	89	64	99	356
Both partners residents, divorced elsewhere	1	5	1	0	0	1	0	1
Both partners non-residents, divorced in Aruba	3	1	2	0	0	0	0	0
Male resident, divorced elsewhere with non-resident Female	15	17	11	4	1	0	2	7
Male resident, divorced in Aruba with non-resident Female	37	30	22	3	12	3	7	25
Female resident, divorced elsewhere with non-resident Male	6	12	6	1	0	1	0	2
Female resident, divorced in Aruba with non-resident Male	23	38	33	7	9	6	4	26
Unknown	0	0	1	0	0	0	0	0
<b>Total</b>	<b>487</b>	<b>445</b>	<b>531</b>	<b>119</b>	<b>111</b>	<b>75</b>	<b>112</b>	<b>417</b>

Source: Population Registry Office