

Fig. 1 Population change by age, Census 2010-2012, 1st Qtr

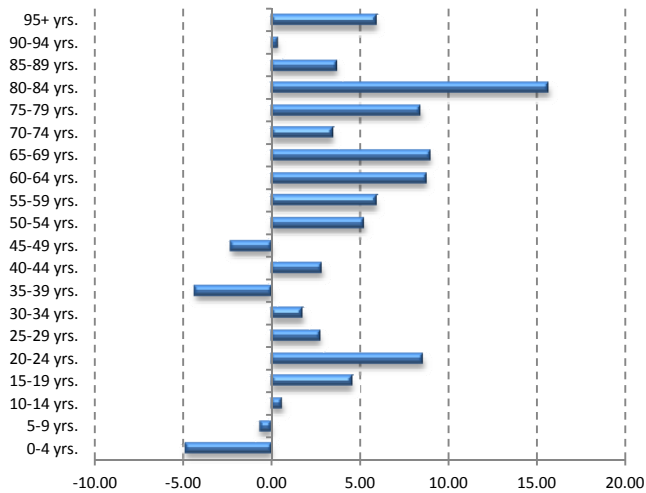


Table 2 Live births by age of mother

	2010		2011		1st Q		
	Male	Female	Male	Female	2010	2011	2012
< 15 yrs.	-	-	2	1	-	1	-
15-19 yrs.	78	73	77	67	40	32	20
20-24 yrs.	145	142	124	130	71	55	66
25-29 yrs.	147	148	141	121	52	55	52
30-34 yrs.	143	135	121	127	67	65	53
35-39 yrs.	72	71	70	71	34	31	35
40-44 yrs.	19	23	18	20	7	5	11
45-49 yrs.	1	-	-	2	-	-	-
50+ yrs.	-	-	-	-	-	-	-
Not reported	-	-	-	-	-	-	-
Total	605	592	553	539	271	244	237

Source: Population Registry Office

At the end of the first quarter 2012, the estimated population totaled 104,034 persons. The most dramatic change since the last census is the slowly but surely growth of the group of the elderly population and the decreasing number of children 15 years and younger.

The group of persons aged 60 years and over shows an overall growth of 8 percent since the last census. Remarkable is the 15.7 percent growth of those aged 80-84 years.

According to the medium scenario of the latest population projections¹, the rapid growth of the population in the next twenty years will be indirectly caused by the rapid aging of the population living on Aruba. It further states that the aging of the population will be most dramatic among the population born on Aruba.

¹ Eelens, F. (2012), *Population Projections Aruba 2010-2030*. Fifth Population and Housing Census Aruba, September 29, 2010. Central Bureau of Statistics, Oranjestad, September 2012. (Soon to be published)

Table 1 Population by age and sex

	End of year			1st Q 2012			Index (2010=100)
	2009	2010	2011	Male	Female	Total	
0-4 yrs.	6,582	6,531	6,260	3,176	3,020	6,196	-4.86
5-9 yrs.	6,636	7,033	6,995	3,565	3,433	6,999	-0.63
10-14 yrs.	7,327	7,510	7,561	3,801	3,747	7,548	0.61
15-19 yrs.	7,111	7,363	7,556	3,901	3,736	7,637	4.57
20-24 yrs.	5,368	5,375	5,572	2,971	2,764	5,734	8.59
25-29 yrs.	5,389	5,507	5,611	2,658	2,972	5,631	2.75
30-34 yrs.	6,689	6,417	6,539	2,971	3,552	6,523	1.79
35-39 yrs.	8,114	7,399	7,179	3,328	3,825	7,153	-4.30
40-44 yrs.	8,768	8,310	8,499	3,914	4,585	8,498	2.87
45-49 yrs.	9,653	9,198	9,066	4,189	4,846	9,035	-2.27
50-54 yrs.	8,379	8,480	8,790	4,132	4,721	8,853	5.27
55-59 yrs.	6,700	6,953	7,232	3,361	3,945	7,306	5.95
60-64 yrs.	4,980	5,199	5,482	2,569	3,017	5,586	8.77
65-69 yrs.	3,607	3,789	4,016	1,827	2,250	4,077	9.00
70-74 yrs.	2,842	2,942	3,009	1,339	1,697	3,037	3.48
75-79 yrs.	1,906	2,003	2,121	841	1,302	2,143	8.46
80-84 yrs.	1,007	1,116	1,219	509	758	1,267	15.71
85-89 yrs.	465	509	511	172	344	517	3.71
90-94 yrs.	195	213	208	63	154	217	0.36
95+ yrs.	85	72	80	13	65	78	5.95
Total	101,802	101,918	103,504	49,299	54,735	104,034	2.51

Source: Population Registry Office

Table 3 Deaths by age

	2010		2011		1st Q		
	Male	Female	Male	Female	2010	2011	2012
< 1 yrs.	2	2	4	3	0	2	0
1-49 yrs.	43	17	43	26	14	12	15
50-59 yrs.	51	28	52	31	24	30	13
60-69 yrs.	69	47	78	36	26	40	22
70-79 yrs.	94	73	81	74	40	38	31
80-89 yrs.	69	71	71	78	40	36	21
90+ yrs.	20	33	12	44	9	16	13
Total	348	271	341	292	153	174	115

Source: Population Registry Office

The aging of the population implicates that a large number of workers will leave the labor force. And without sufficient locally available young people to enter the labor market, large groups of foreign workers will have to be imported to fill all those vacant positions.

The influx of these foreign born persons in their reproductive years will be followed by an increase in the number of births. Because of the overall population growth, combined with the rapid aging of the population, more people will move into age-groups that experience higher probabilities of dying, increasing the death rate.

A closer look into the domiciliation of people (table 5) reveals that during the first quarters of the last three years the number of people born in Aruba (or the Netherlands Antilles) shows an increase. This increase of 32 percent for local born persons is almost equal to the percentage growth for the foreign born population. (33% when comparing the 1st quarter of 2012 with the 1st quarter of 2010.)

The opposite trend is seen in the number of persons born in Aruba (or the Netherlands Antilles) who are leaving the island. The greater majority of those leaving are students and the most likely month they depart is August (the so called beursalen).

Even so is noteworthy that during the first quarter of 2012 considerably fewer locals left the island when compared to previous years.

Table 7 Key Demographic Indicators

		2009	2010	2011
	Unit			
Total population		101,802	101,918	103,504
Male population		48,406	48,433	49,075
Female population		53,395	53,485	54,429
Mean age				
Total population		37.2	37.3	37.6
Male population		36.1	36.0	36.4
Female population		38.2	38.4	38.7
Functional Age-Groups				
0-14 yrs	%	20.2	20.7	20.1
15-64 yrs	%	74.7	72.2	71.7
65+ yrs	%	9.9	10.4	10.8
Total Dependency Ratio		43.1	45.2	44.7
Child Dependency Ratio (0-14/15-64)		28.9	30.0	29.1
Old-age Dependency Ratio (65+/15-64)		14.2	15.2	15.6
Index of ageing (60+/0-14)		73.4	75.2	80.0
Sex Ratio	p/100	90.7	90.6	90.2
Crude Birth rate (CBR)	p/1000	12.3	11.8	10.6
Total Fertility Rate (TFR)		1.9	1.9	1.7
Age Specific Fertility Rate (15-19 yrs)	p/1000	42.9	42.4	39.0
Crude Death rate (CDR)	p/1000	6.2	6.1	6.2
Total Emigration		3,075	2,988	2,339
Emigration rate	p/1000	30.3	29.3	22.8
Total Immigration		2,846	2,526	3,466
Immigration rate	p/1000	28.0	24.8	33.7
Growth rate population	p/1000	3.9	1.1	15.4
Population density	Km ²	566	566	575

Table 5 Domiciliation by nationality and place of birth

	2010		2011		1st Q		
	Male	Female	Male	Female	2010	2011	2012
Dutch born in Aruba/N.A.	308	320	396	368	149	170	196
Dutch born in the Neth.	302	266	278	269	105	111	127
Dutch born elsewhere	97	80	89	124	25	49	26
Foreign-born	543	559	817	1,073	262	339	349
Unknown	28	24	16	23	14	9	9
Total	1,278	1,249	1,596	1,857	555	678	707

Source: Population Registry Office

Table 6 Departures by nationality and place of birth

	2010		2011		1st Q		
	Male	Female	Male	Female	2010	2011	2012
Dutch born in Aruba/N.A.	772	818	637	656	222	230	145
Dutch born in the Neth.	356	298	269	229	90	74	62
Dutch born elsewhere	155	190	114	132	49	63	28
Foreign-born	215	182	154	148	67	63	64
Unknown	-	-	-	-	-	-	-
Total	1,498	1,488	1,174	1,165	427	430	299

Source: Population Registry Office

Fig. 3 Immigration by place of birth, 2001-2011

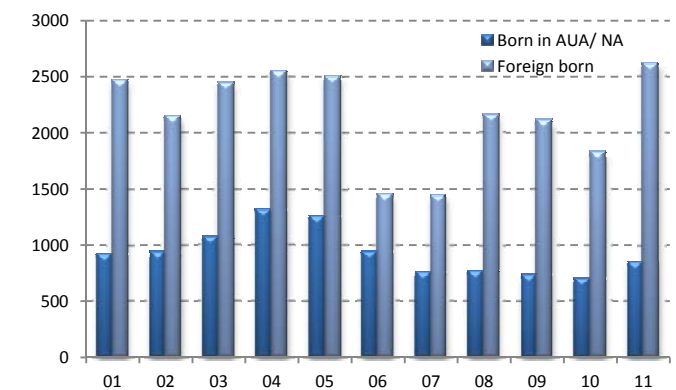
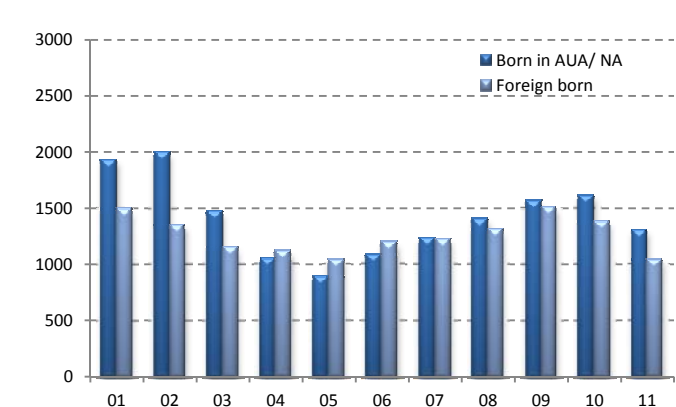


Fig. 4 Emigration by place of birth, 2001-2011



Note: due to technical difficulties data on marriages and divorces are not published.