

Table 1. Total estimated population by age and sex

	End of year			4 th Q 2021			Population Growth (base=2020)
	2018	2019	2020	Male	Female	Total	
0-4 yrs.	6,447	6,229	5,211	2,602	2,401	5,002	-4.81
5-9 yrs.	6,605	6,669	6,293	3,140	3,006	6,146	-2.77
10-14 yrs.	7,010	6,924	6,898	3,344	3,344	6,688	-3.88
15-19 yrs.	6,974	6,801	6,898	3,541	3,265	6,806	-0.73
20-24 yrs.	5,893	5,730	5,467	2,728	2,560	5,288	-2.85
25-29 yrs.	6,388	6,261	6,054	2,943	2,990	5,933	-2.79
30-34 yrs.	6,553	6,657	6,678	3,147	3,441	6,588	-2.32
35-39 yrs.	7,087	7,012	6,904	3,222	3,719	6,941	0.33
40-44 yrs.	7,349	7,382	7,270	3,314	3,970	7,284	0.01
45-49 yrs.	8,413	8,185	7,588	3,349	3,981	7,330	-4.65
50-54 yrs.	8,612	8,449	8,426	3,763	4,603	8,366	-1.13
55-59 yrs.	8,974	9,141	8,813	3,958	4,705	8,663	-2.38
60-64 yrs.	7,496	7,690	8,016	3,774	4,504	8,278	3.87
65-69 yrs.	5,739	6,028	6,436	2,976	3,649	6,625	3.36
70-74 yrs.	4,016	4,197	4,567	2,169	2,635	4,804	5.92
75-79 yrs.	2,662	2,721	3,018	1,345	1,842	3,187	6.76
80-84 yrs.	1,706	1,833	1,966	828	1,178	2,006	2.06
85-89 yrs.	853	918	990	360	697	1,057	9.73
90-94 yrs.	299	313	343	127	233	359	6.61
95+ yrs.	88	100	97	30	75	105	13.37
Total	109,164	109,241	107,932	50,659	56,798	107,457	-0.65

Source: 2020 Census and the Population Registry Office

Note: Total number of persons registered at the Population Registry Office as of 31 December, 2021: 112,737 persons.

Graph 2. Absolute number of live births and midyear population of women in the reproductive years in percentage of all women

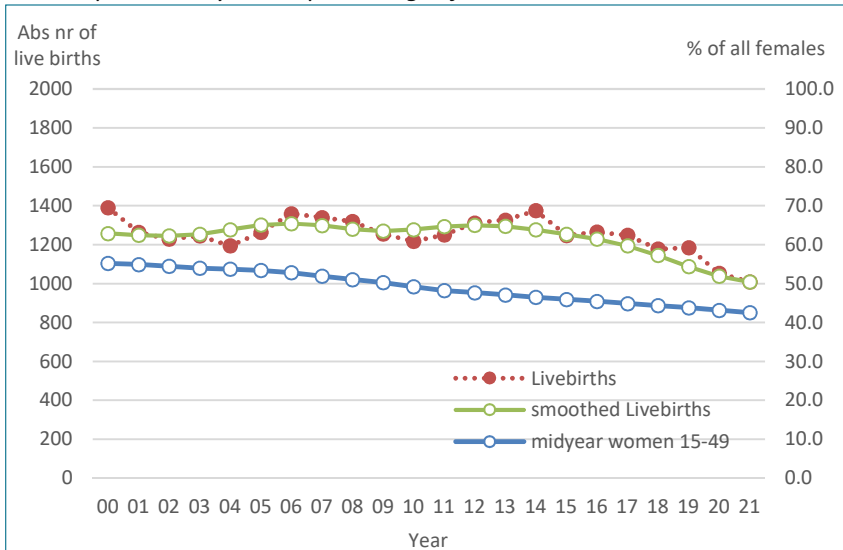
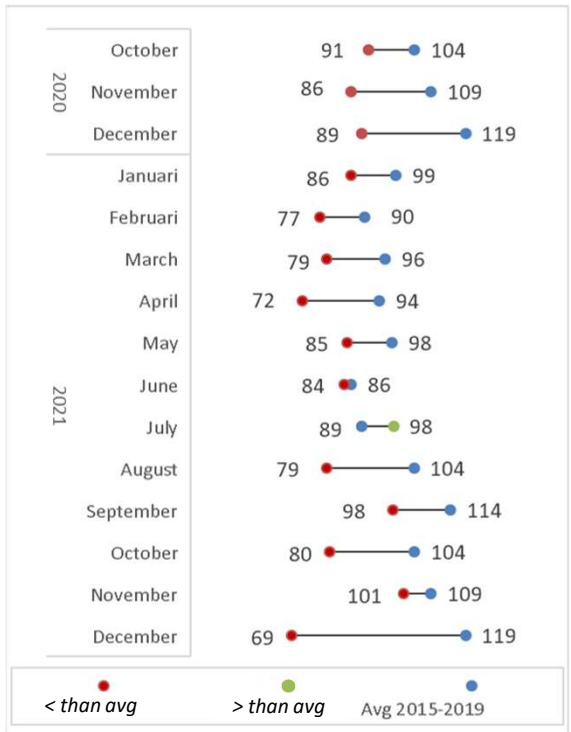


Table 2. Number of live births, GFR and percentage of women of reproductive age, average last 5 decades vs live births 2020-2021

Year	Number of live births	GFR (births p/1000 women)	Women in reproductive age as % of all women
Average			
1972-1980	1,035	69.8	50.3
1981-1990	1,073	58.8	53.9
1991-2000	1,339	60.1	47.3
2001-2010	1,268	49.1	48.5
2011-2019	1,264	50.2	44.0
Year total			
2020	1,052	42.5	43.1
2021	1,008	41.7	42.5

Source: Population Registry Office

Graph 1. Total number of live births vs average number of live births 2015-2019, per month



Declining number of live births

In the nineties the average number of live births totaled 1,339 per year, the highest average of live births during the last 5 decades (see Table 2). The General Fertility Rate (GFR) was at 60 births per thousand women in the reproductive age (15-49 years). However, even as the absolute number of births was highest during the nineties, the GFR was highest during the seventies at 70 births per 1,000 women in the reproductive age (15-49 years), partly because of the relatively higher share of these women in the female population of Aruba.

The trend shown in graph 2, shows a slowly, but steadily declining trend in the number of live births since 2014. The COVID19 pandemic may have only exacerbated the already existing declining trend in total live births. Graph 2 also shows a steadily declining number of women in the reproductive years, with their share at 42.5 percent of all women in 2021.

Table 3. Live births by age of mother

	End of Year					2021		
	2016	2017	2018	2019	2020	Male	Female	Total
	< 15 yrs.	1	1	-	-	1	1	-
15-19 yrs.	96	95	79	77	77	21	23	44
20-24 yrs.	295	307	266	267	201	101	96	197
25-29 yrs.	353	352	339	343	292	152	135	287
30-34 yrs.	286	288	299	284	268	126	127	253
35-39 yrs.	181	164	151	170	167	92	84	176
40-44 yrs.	49	37	42	41	41	26	23	49
45-49 yrs.	3	4	-	1	5	1	-	1
50+ yrs.	-	-	1	1	-	-	-	-
Total	1,264	1,248	1,177	1,184	1,052	520	488	1,008

Source: Population Registry Office

Table 4. Deaths by age and sex

	End of Year					2021		
	2016	2017	2018	2019	2020	Male	Female	Total
	< 1 yrs.	6	6	9	5	4	3	1
1-49 yrs.	66	51	49	44	37	33	24	57
50-59 yrs.	86	68	76	57	79	43	41	84
60-69 yrs.	128	138	133	138	127	124	85	209
70-79 yrs.	205	183	187	188	200	162	103	265
80-89 yrs.	228	209	203	175	234	117	149	266
90+ yrs.	70	62	73	64	62	26	53	79
Total	789	717	730	671	743	508	456	964

Source: Population Registry Office

Table 5. Number of registrations by Dutch nationality and place of birth

	End of Year					2021		
	2016	2017	2018	2019	2020	Male	Female	Total
	Dutch born in Aruba/Dutch Antilles	742	771	793	694	619	349	295
Dutch born in the Netherlands	584	582	558	445	386	185	210	395
Dutch born elsewhere	215	239	262	216	196	103	134	237
Foreign-born	1,001	1,071	1,535	1,428	630	366	523	889
Unknown	49	50	21	26	15	12	16	28
Total	2,591	2,713	3,169	2,809	1,846	1,015	1,178	2,193

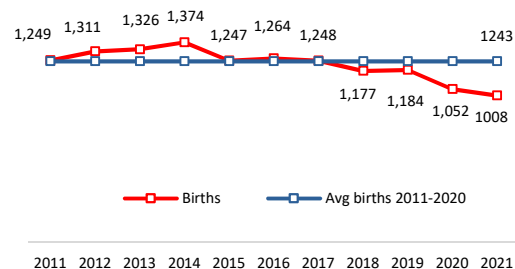
Source: Population Registry Office

Table 6. Number of de-registrations by Dutch nationality and place of birth

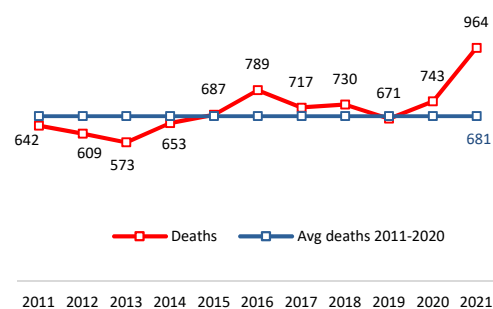
	End of Year					2021		
	2016	2017	2018	2019	2020	Male	Female	Total
	Dutch born in Aruba/Dutch Antilles	1,319	1,678	1,523	1,623	1,772	842	844
Dutch born in the Netherlands	598	634	696	581	585	210	237	447
Dutch born elsewhere	369	643	439	488	524	116	170	286
Foreign-born	598	453	446	551	581	130	162	292
Unknown	-	2	-	1	-	-	1	1
Total	2,884	3,411	3,104	3,245	3,463	1,298	1,414	2,712

Source: Population Registry Office

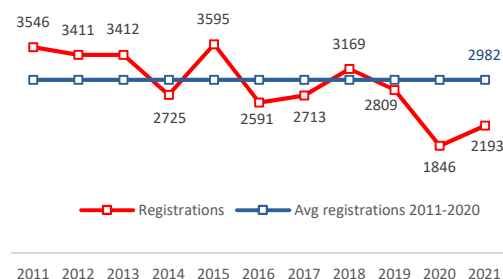
Graph 3. Live births 2021 and avg 2011-2020



Graph 4. Deaths 2021 and avg 2011-2020



Graph 5. Registrations 2021 and avg 2011-2020



Graph 6. De-registrations 2021 and avg 2011-2020

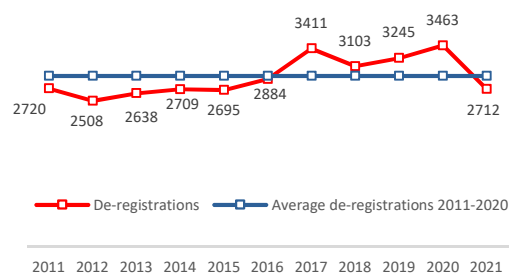


Table 7. Selected indicators

	Unit	2015	2016	2017	2018	2019	2020	2021
Mid-year population		107,906	108,727	108,735	108,908	109,202	108,586	107,695
Total Dependency Ratio ((0-14 yrs + 65+ yrs)/15-64 yrs)		45.7	46.4	47.4	48.0	49.0	49.7	50.3
Child Dependency Ratio (0-14 yrs/15-64 yrs)		27.6	27.4	27.4	27.2	27.0	25.5	25.0
Old-age Dependency Ratio (65+ yrs/15-64 yrs)		18.1	18.9	19.9	20.8	22.0	24.2	25.4
Index of ageing (60+ yrs/0-14 yrs)		98.9	103.6	108.4	113.9	120.1	138.2	148.1
Sex Ratio	p/100	89.5	89.3	89.8	89.3	89.2	89.3	89.2
Crude Birth rate (CBR)	p/1000	11.6	11.6	11.5	10.8	10.8	9.7	9.4
Total Fertility Rate (TFR)		1.9	1.9	1.9	1.8	1.8	1.6	1.6
Age Specific Fertility Rate (15-19 yrs)	p/1000	26.6	26.6	26.9	22.8	22.7	23.1	13.3
Crude Death rate (CDR)	p/1000	6.4	7.3	6.6	6.7	6.1	6.8	9.0
Total Emigration		2,695	2,884	3,411	3,103	3,245	3,463	2,712
Emigration rate	p/1000	25.0	26.5	31.4	28.5	29.7	31.9	25.2
Total Immigration		3,595	2,591	2,713	3,169	2,809	1,846	2,193
Immigration rate	p/1000	33.3	23.8	25.0	29.1	25.7	17.0	20.4
Growth rate population	p/1000	13.5	1.7	-1.5	4.7	0.7	-12.1	-4.4
Population density	p/Km ²	603.5	606.5	603.6	606.5	606.9	599.6	597.0

Source: 2010 Census and the Population Registry Office

Table 8. Revised intercensal population estimates

	Live births	Deaths	Registrations	De-registrations	Revised Population	
					End of year	Mid-year
Census 2000,					90,506	
14 October						
31/12/2000	414	93	726	513	91,040	90,588
31/12/2001	1,263	435	3,386	3,416	91,837	91,439
31/12/2002	1,228	492	3,076	3,339	92,311	92,074
31/12/2003	1,244	501	3,516	2,623	93,946	93,128
31/12/2004	1,193	502	3,858	2,165	96,330	95,138
31/12/2005	1,263	482	3,756	1,929	98,939	97,634
31/12/2006	1,359	539	2,387	2,274	99,871	99,405
31/12/2007	1,339	533	2,199	2,450	100,427	100,149
31/12/2008	1,319	554	2,926	2,711	101,406	100,916
31/12/2009	1,254	629	2,846	3,075	101,802	101,604
Census 2010,					101,484	
29 September						
31/12/2010	384	176	668	486	101,874	101,838
31/12/2011	1,249	642	3,546	2,720	103,307	102,591
31/12/2012	1,311	609	3,411	2,508	104,912	104,109
31/12/2013	1,326	573	3,412	2,638	106,438	105,675
31/12/2014	1,374	653	2,725	2,709	107,176	106,807
31/12/2015	1,247	687	3,595	2,695	108,636	107,906
31/12/2016	1,264	789	2,591	2,884	108,818	108,727
31/12/2017	1,248	717	2,713	3,411	108,651	108,735
31/12/2018	1,177	730	3,169	3,103	109,164	108,908
31/12/2019	1,184	671	2,809	3,245	109,241	109,202
Census 2020,					108,166	
1 October						
31/12/2020	284	185	463	795	107,932	108,586

Source: Population and Housing Census 2010 & 2020 of the Central Bureau of Statistics and the Population Registry Office

After a Population & Housing count (Census), the entire time series of population estimates, starting with the most recent decennial census, is revised.

The revision incorporates data from the new decennial census and a final re-run of the vital statistics data obtained from the Population Registry Office to capture any delayed recordings occurring during the current intercensal years. Then adjustments are made for the number of de-registrations based on the new population count, as persons who leave the country without de-registering cause a lower emigration rate than what it actually is.

The revision includes population estimates for the years before the new decennial census year (Census2020) to the previous decennial census year (Census2010).