



Table of Contents

A note to the reader.....	ii
1 MONTHLY CHANGE OF THE CPI	1
1.1 CPI AND INFLATION	1
1.2 CHANGES IN SECTOR	1
1.3 CHANGES IN CATEGORIES AND SUBCATEGORIES	1
2 END OF PERIOD CHANGE OF THE CPI	2
2.1 END OF PERIOD CHANGE CPI FOR OCTOBER 2020	2
2.2 CHANGES IN SECTOR	2
2.3 CHANGES IN CATEGORIES	2
2.4 END OF YEAR CHANGE CPI 2011 - 2020	2
2.5 PERIOD AVERAGE CHANGE CPI FOR OCTOBER 2020	2
3 DEVELOPMENT OF INDICES OF MAIN SECTORS AND UTILITIES.....	3
3.1 INDICES MAIN SECTORS	3
3.2 ELECTRICITY	3
3.3 WATER.....	3
3.4 GASOLINE AND DIESEL.....	3
4 PERCENTAGE CHANGE CPI OF ARUBA’S MAJOR TRADING PARTNERS	4
4.1 COMPARISON OF THE CPI OF ARUBA AND THE USA	4
5 CORE INFLATION	5
5.1 CORE INFLATION	5
5.2 MONTHLY CHANGE OF THE CORE INFLATION.....	5
5.3 END OF YEAR CHANGE OF THE CORE INFLATION, 2015 - 2020	5
6 DEVELOPMENT OF FOOD & CATERING SERVICES	6
6.1 MONTHLY CHANGE OF FOOD & CATERING SERVICES FOR OCTOBER 2020	6
6.2 END OF PERIOD CHANGE OF FOOD & CATERING SERVICES FOR OCTOBER 2020	6
7 SUBSISTENCE LEVEL.....	7
7.1 SUBSISTENCE LEVEL.....	7
7.2 MONTHLY CHANGE OF THE SUBSISTENCE LEVEL FOR OCTOBER 2020	7
7.3 COMPARISON OF THE SUBSISTENCE LEVEL AND MINIMUM WAGE	7
APPENDICES	
APPENDIX 1: MONTHLY AND YEARLY % CHANGES IN THE CPI FOR OCTOBER 2020.....	8
APPENDIX 2: EFFECT ON THE CPI PER SECTOR AND CATEGORY FOR OCTOBER 2020	9
APPENDIX 3: MONTHLY & YEARLY CHANGES (%) AND EFFECT IN THE FOOD & CATERING SERVICES FOR OCTOBER 2020	10
APPENDIX 4: MONTHLY AND YEARLY % CHANGES AND EFFECT IN THE MAIN INDICES FOR OCTOBER 2020.....	11
APPENDIX 5: COURSE OF INDICES FOR 2010 – UP TO OCTOBER 2020	12
APPENDIX 6: GLOSSARY	13

A note to the reader

The following report presents the price statistics for October 2020.

- The Central Bureau of Statistics made a series of improvements in October 2020 to keep the measures on changes in consumer prices as accurate and up to date as possible. Due to the implementation of these important changes in the calculation of the CPI, the CPI from June 2019 up to September 2020 were revised and corrected.
- At the end of October 2020 the Consumer Price Index (CPI) shows a decrease of 0.2% compared to the end of September 2020. The sector which affected the CPI the most was “Recreation and culture” (-0.7%), which led to an effect of -0.07 percentage points (ppts) on the Δ CPI of October 2020 (-0.2%).
- Compared to October 2019 the CPI decreased by 2.8%. The sector which affected the CPI the most was “Transport” (-7.0%), which led to an effect of 0.87 ppts.
- The period average inflation for the period October 2019 - October 2020 is -0.2%, which is 4.3 ppts lower compared to the period average inflation for the period October 2018 - October 2019 (4.1%).
- Utilities (Water and Electricity) did not register price changes in October 2020. The price of gasoline registered a decrease of 0.7% in October 2020 and caused an effect of -0.03 ppts on the Δ CPI of October 2020. The price of diesel registered a decrease of 3.9% in October 2020 and had an effect of -0.01ppt on the Δ CPI of October 2020.

This report is divided in 7 sections. An overview of the monthly percentage changes in the CPI and index per sector is presented in section 1. Section 2 provides the yearly percentage changes in the CPI and index per sector. The development of indices of main sectors and utilities is outlined in section 3. Section 4 presents the percentage change in the CPI of Aruba’s major trading partners and compares the CPI of Aruba and the USA. Section 5 presents an overview of the monthly and yearly percentage changes of the core inflation. Section 6 presents the price movements in food & catering services. The development of the subsistence level is presented in section 7 and is followed by the appendices.

For other specific information contact us at CBS or visit www.cbs.aw.

Contact information:

Central Bureau of Statistics
L.G. Smith Boulevard 160
Oranjestad - Aruba
Phone: 524-7436
Fax: 583-8057
E-mail: LdSilva@cbs.aw

1 Monthly change of the CPI

1.1 CPI and Inflation

The CPI of the total population of Aruba for the month of October 2020 is 96.97; a decrease of 0.2% compared to the CPI of September 2020 (97.14). An overview of the percentage change in the CPI (Δ CPI) for different periods during 2019 and 2020 is shown in Table 1. The terms percentage change in the CPI and “inflation” (deflation) are considered similar and are used interchangeably. The deflation over the last 12 months (end of period inflation) is 2.8%, while the inflation over a period of 24 months (period average inflation) is -0.2%.

Table 1: Overview of Δ CPI

Period		% Changes		Index	
		2020	2019	Current	Last
Monthly	Sep - Oct	-0.2	0.4	96.97	97.14
Year-to-date	Dec - Oct	-3.2	3.2	96.97	100.13
Last 12 months ¹	Oct - Oct	-2.8	4.3	96.97	99.80
Last 24 months ²	Oct - Oct	-0.2	4.1	98.16	98.40

Source: Central Bureau of Statistics Aruba

¹ End of period inflation

² Period average inflation

Figure 1 depicts the monthly Δ CPI over a period of one year starting from October 2019, whereas the Δ CPI for the month October for the years 2011 to 2020 is illustrated in Figure 2.

1.2 Changes in sector

Figure 3 provides an overview of the percentage changes for the indices per sector for October 2020. The percentage change in index is further denoted as Δ I. The largest Δ I is observed for the “Clothing and footwear” sector with an increase of -1.1%

1.3 Changes in categories and subcategories

The largest positive and negative Δ I is seen in the categories “Audio-visual, photographic and information processing equipment” (12.4%) and “Other major durables for recreation and culture” (-5.4%). In the “Food and non-alcoholic beverages” sector, the “Food” and “Non-alcoholic beverages” categories were virtually unchanged. In the “Transport” sector the major Δ I is observed for the category “Transport services” (7.9%). In the “Recreation and culture” sector the major Δ I is observed for the category “Audio-visual, photographic and information processing equipment” (12.4%)¹.

The categories which influenced the CPI calculation the most are “Holidays”, “Furniture, furnishings, carpets and other floor coverings” and “Clothing” which had an effect of respectively, -0.08, 0.07 and -0.07 ppts on the Δ CPI. Reference is made to tables 16 and 17 in Appendices 1 and 2. Table 16 provides an

overview of the indices for the months October 2019, December 2019, September 2020 and October 2020 together with corresponding weights per sector and the monthly, year-to-date (ytd), end of period and period average percentage changes for October 2020. In table 17 an overview of the effect on the monthly, year-to-date (ytd), end of period and period average CPI per sector and category for October 2020 is presented. The course of indices for 2010 – up to October 2020 is illustrated in Appendix 5.

Figure 1: Monthly Δ CPI, 2019 - 2020

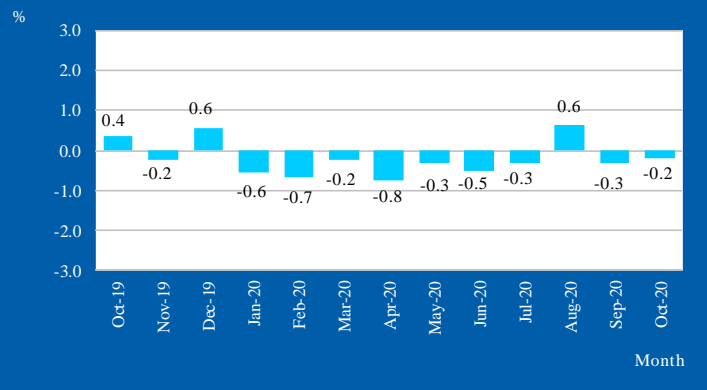


Figure 2: Monthly Δ CPI for October, 2011 - 2020

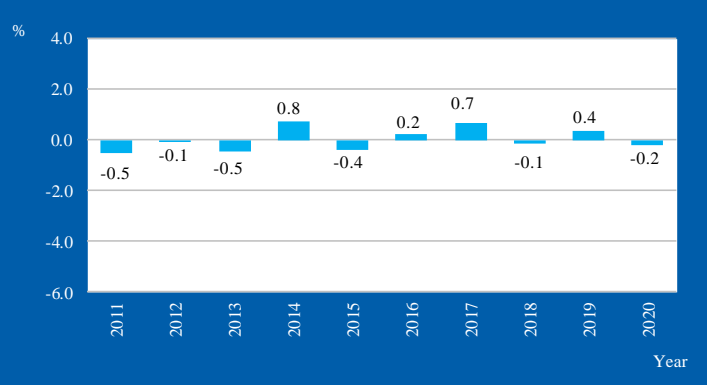
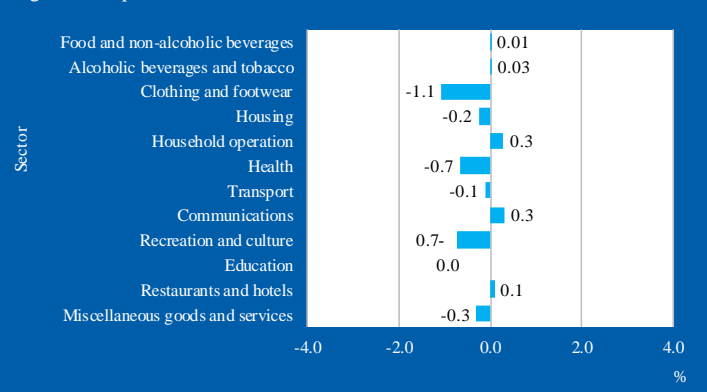


Figure 3: Δ I per sector, December 2020



¹ The focus is on the four major sectors which are: Housing, Transport, Food and non-alcoholic beverages and Recreation and culture. Together these sectors form 59% of the total weight of the basket of goods and services.

2 End of period change of the CPI

2.1 End of period change CPI for October 2020

The CPI decreased from 99.80 in October 2019 to 96.97 in October 2020, a decrease of 2.8%. This Δ CPI is the lowest registered over a period of 5 years for the month October, and is 7.1 ppts lower than the Δ CPI registered in 2019 (4.3%) (see table 2).

Table 2: End of period Δ CPI for October, 2016 - 2020

Period	Δ CPI	Index
2015-2016	-0.1	93.17
2016-2017	-1.2	92.05
2017-2018	3.9	95.66
2018-2019	4.3	99.80
2019-2020	-2.8	96.97

Source: Central Bureau of Statistics Aruba

2.2 Changes in sector

An overview of the percentage change per sector over the period October 2019 - October 2020 is presented in table 3. The largest Δ I is observed for the sector "Household operation" with a decrease of 7.4%. Furthermore, decreases of 7.3%, 7.0% and 2.6% are observed for the "Clothing and footwear", "Transport" and "Recreation and culture" sectors, respectively. A comparison of the Δ I's for the years 2019 and 2020 is provided in figure 4.

Table 3: Percentage change for October, 2019 - 2020

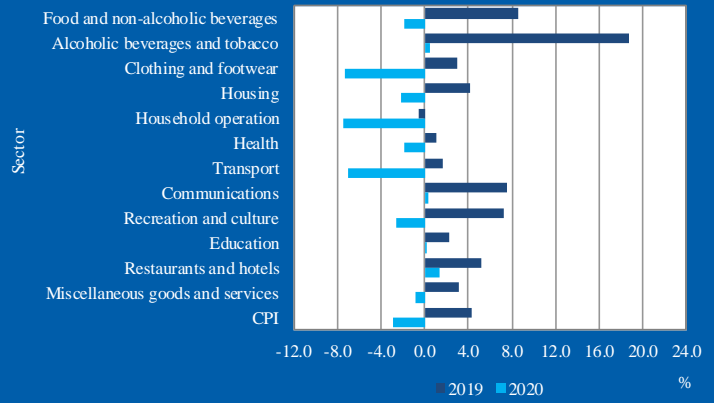
Sector	% Change
Food and non-alcoholic beverages	-1.9
Alcoholic beverages and tobacco	0.5
Clothing and footwear	-7.3
Housing	-2.1
Household operation	-7.4
Health	-1.9
Transport	-7.0
Communications	0.4
Recreation and culture	-2.6
Education	0.2
Restaurants and hotels	1.4
Miscellaneous goods and services	-0.9
CPI	-2.8

Source: Central Bureau of Statistics Aruba

2.3 Changes in categories

The largest positive and negative Δ I in categories observed over a period of one year are respectively, "Tools and equipment for house and garden" (12.6%) and "Furniture, furnishings, carpets and other floor coverings" (-25.3%). For an overview of the end of period percentage changes per category refer to table 16 in Appendix 1.

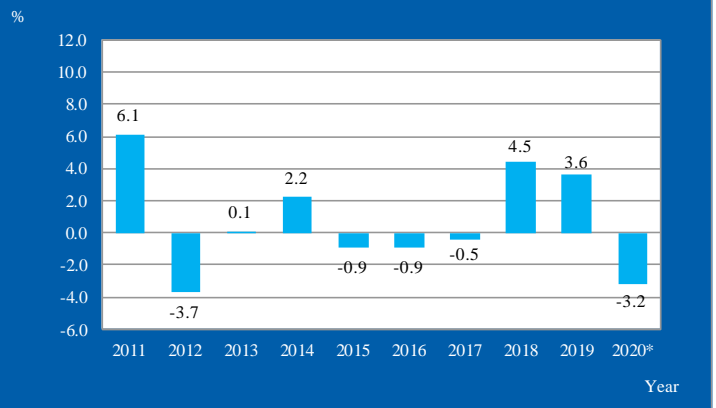
Figure 4: Δ I per sector for October, 2019 - 2020



2.4 End of year change CPI 2011 - 2020

The end of year Δ CPI for the period 2011 - 2020 is shown in figure 5. The Δ CPI for 2020 is calculated by comparing the CPI of October 2020 with the CPI of December 2019. The ytd Δ CPI for October 2020 is -3.2%.

Figure 5: End of year Δ CPI 2011 - 2020



ytd

2.5 Period average change CPI for October 2020

The period average change CPI (Δ ACPI) for October 2020 is -0.2%. Table 4 provides an overview of the Δ ACPI for the month October for the years 2016 to 2020. The Δ ACPI for 2020 decreased by 4.3 ppts compared to 2019 (4.1%).

Table 4: Overview of Δ ACPI for October, 2016 - 2020

Period	Δ ACPI	Index
2015-2016	-1.0	92.92
2016-2017	-0.9	92.05
2017-2018	2.7	94.55
2018-2019	4.1	98.40
2019-2020	-0.2	98.16

Source: Central Bureau of Statistics Aruba

3 Development of indices of main sectors and utilities

3.1 Indices main sectors

The four major sectors, “Housing”, “Transport”, “Food and non-alcoholic beverages” and “Recreation and culture”, constitute 64% of the total weight of the basket of goods and services, which are observed on a monthly basis. An overview of the course of indices for 2010 – up to October 2020 per sector and for the CPI is provided in figures 9-1 to 9-12 in Appendix 5.

Changes in the indices of the sectors “Housing” and “Transport” are mainly the result of changes in the international oil prices and prices of utilities during the respective months. The development of crude oil, fuel surcharge, electricity, water, gasoline and diesel prices is provided in table 5 and in the adjoining figures 6-1 and 6-2.

Table 5: Prices of utilities, gasoline and diesel, 2019 - 2020

Month	Crude oil per barrel ¹	Total energy charge ²		Electricity ³	Water ⁴	Gasoline ⁵	Diesel ⁵
		≤ 500 kWh	501-1000 kWh				
Oct-19	53.77	34.52	35.72	265.65	137.05	205.10	178.40
Nov-19	56.74	34.52	35.72	265.65	137.05	203.30	177.70
Dec-19	59.73	34.52	35.72	265.65	137.05	203.70	175.60
Jan-20	57.92	31.09	31.99	240.09	137.05	204.60	179.20
Feb-20	50.67	31.09	31.99	240.09	137.05	201.90	172.40
Mar-20	30.40	31.09	31.99	240.09	137.05	197.20	160.60
Apr-20	17.39	31.09	31.99	240.09	137.05	160.60	136.70
May-20	26.57	31.09	31.99	240.09	137.05	144.70	119.00
Jun-20	38.19	31.09	31.99	240.09	137.05	160.50	121.60
Jul-20	40.58	31.09	31.99	240.09	137.05	174.90	135.00
Aug-20	42.33	31.09	31.99	240.09	137.05	178.10	140.70
Sep-20	39.64	31.09	31.99	240.09	137.05	180.20	140.50
Oct-20	39.45	31.09	31.99	240.09	137.05	178.90	135.00

Source: Central Bureau of Statistics Aruba

¹ Average West Texas Intermediate (WTI) crude oil price per barrel in US\$ (Source: U.S. Energy Information Administration)

² Total energy charge in Afl. cents per kWh

³ Electricity price in Afl.

⁴ Water price in Afl.

⁵ Gasoline and diesel prices in Afl. cents per liter

3.2 Electricity

The price of electricity is determined in Aruban florins (Afl.) for an average usage by households. The average usage is 725.5 kWh per month. The electricity price for an average consumption of 725.5 kWh did not change in October 2020, it remained at Afl. 240.09. Figure 6-1 provides an overview of the course of changes in the electricity price for the period 2013 to 2020.

The total energy charge per kWh for a usage of electricity up to 500 kWh did not change in October 2020, it stayed at Afl. 31.09 cents per kWh. The total energy charge per kWh for a usage of electricity between 501 - 1000 kWh did not change in October 2020, it stayed at Afl. 31.99 cents per kWh.

3.3 Water

The price of water is determined in Afl. for an average usage (water consumption) by households. Figure 6-1 provides an overview of the course of changes in the water price for the period 2013 to 2020. The water price for an average usage by households did not change in October 2020, it remained at Afl. 137.05.

3.4 Gasoline and Diesel

The retail price of gasoline decreased by 0.7% from 180.2 cents per liter in September 2020 to 178.9 cents per liter in October 2020. In October 2020, the retail price of diesel registered a decrease of 3.9% from 140.5 cents per liter in September 2020 to 135.0 cents per liter in October 2020.

Figure 6-1 Electricity price, water price and energy charge in Afl., 2013 - 2020

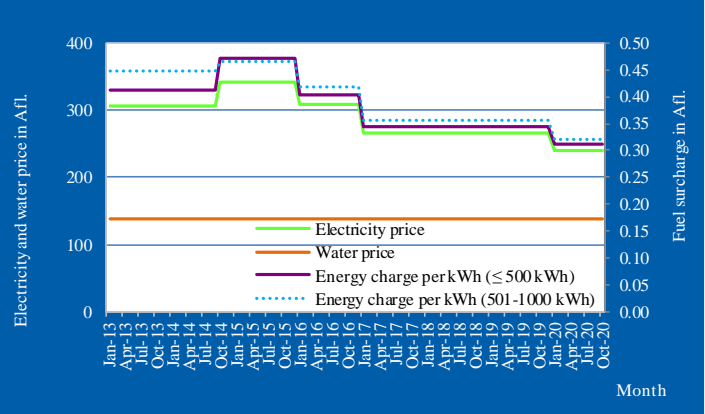
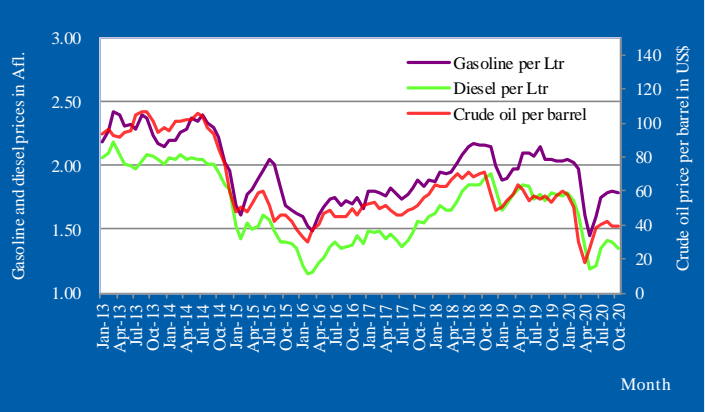


Figure 6-2 Gasoline, diesel and crude oil prices, 2013 - 2020



4 Percentage change CPI of Aruba's major trading partners

4.1 Comparison of the CPI of Aruba and the USA

Table 6 provides an overview of the Δ CPI of Aruba's major trading partners starting from October 2019. In October 2020 the Δ CPI of the USA, Curaçao and the Netherlands were 0.0%, 0.1% and 0.5%.

Table 6: Monthly Δ CPI 2019 - 2020 per Country

Period	Aruba	USA	Curaçao	Netherlands
Oct-19	0.4	0.2	0.0	0.4
Nov-19	-0.2	-0.1	-0.4	0.1
Dec-19	0.6	-0.1	0.1	0.1
Jan-20	-0.6	0.4	0.1	-0.8
Feb-20	-0.7	0.3	-0.3	0.6
Mar-20	-0.2	-0.2	0.1	0.2
Apr-20	-0.8	-0.7	0.2	0.5
May-20	-0.3	0.0	-0.2	-0.1
Jun-20	-0.5	0.5	0.3	0.3
Jul-20	-0.3	0.5	0.4	1.1
Aug-20	0.6	0.3	0.7	-0.5
Sep-20	-0.3	0.1	0.5	-0.2
Oct-20	-0.2	0.0	0.1	0.5

Source: CBS Aruba, Bureau of Labor Statistics (USA), CBS Curaçao and CBS Netherlands

The USA is considered Aruba's largest trading partner². Table 7 provides an overview of the Δ CPI for Aruba and the USA in October 2020. Aruba's monthly Δ CPI for October 2020 is 0.2 ppts lower than the Δ CPI of the USA.

Table 7: Overview of Δ CPI, 2020

Period	Aruba	USA
Monthly Sep - Oct	-0.2	0.0
Year-to-date Dec - Oct	-3.2	1.3
Last 12 months ¹ Oct - Oct	-2.8	1.2
Last 24 months ² Oct - Oct	-0.2	1.4

Source: Central Bureau of Statistics Aruba

¹ End of period inflation

² Period average inflation

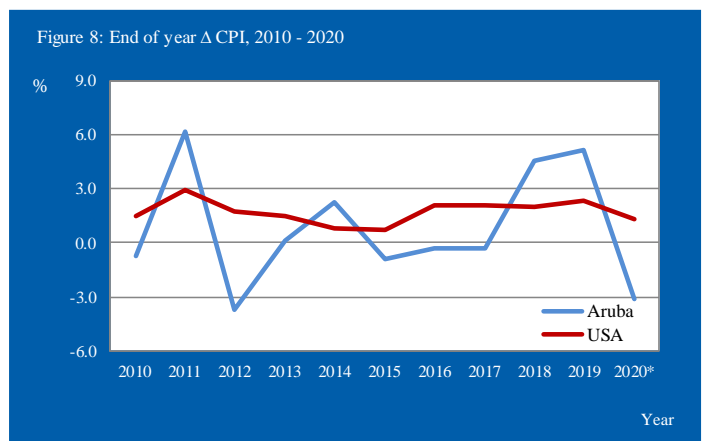
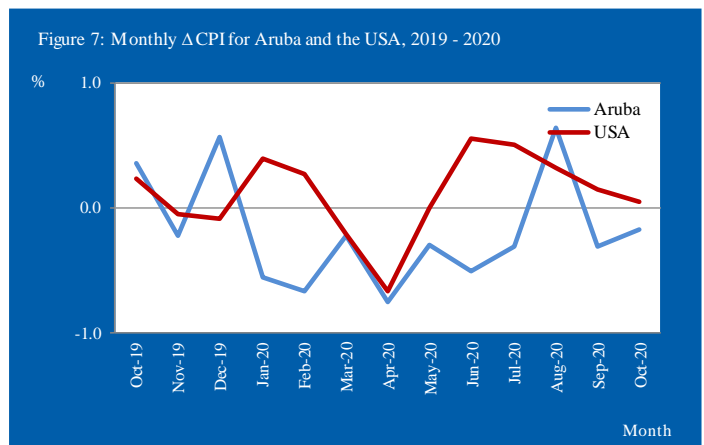
The Δ CPI of Aruba over the last 12 months is 4.0 ppts lower compared to the USA's 12-month Δ CPI. The Δ CPI over the last 24 months for Aruba is 1.6 ppts lower than the Δ CPI of the USA. The monthly inflation for both Aruba and the USA is depicted in figure 7 over a period of one year. Furthermore, an overview of the end of year Δ CPI over the period 2010 - 2020 for Aruba and the USA is provided in table 8 and figure 8.

Table 8: End of year Δ CPI, 2010 - 2020

Period	Aruba	USA
2010	-0.6	1.1
2011	6.5	3.4
2012	-1.6	1.8
2013	-1.9	1.2
2014	1.5	1.3
2015	-0.8	0.5
2016	-0.1	1.7
2017	-1.2	2.2
2018	3.9	2.2
2019	4.3	2.1
2020*	-3.2	1.3

Source: Central Bureau of Statistics Aruba

* ytd



*ytd

² "51% of Aruba's import by sea and air originates from the USA" (Source: Foreign Trade Statistics Report, 3rd Quarter 2020).

5 Core inflation

5.1 Core inflation

Core inflation is a measure of inflation which excludes certain items that face volatile price movements e.g. food products and energy. By calculating the core inflation these more volatile components are eliminated from the inflation. Core inflation indices serve to assess the mid- and long-term trend of the overall price level. For the purpose of adjusting monetary policy, many economists focus more intently on the core rate of inflation, as this allows for an in-depth assessment of inflationary processes ongoing in the economy.

5.2 Monthly change of the core inflation

In October 2020 the core inflation (measured over the period October 2019 - 2020) was 1.0%. In October 2020 the food index was 0.7%, while the energy index shows a decrease of 6.2%.

Table 9: Monthly inflation¹ and core inflation, 2019 - 2020

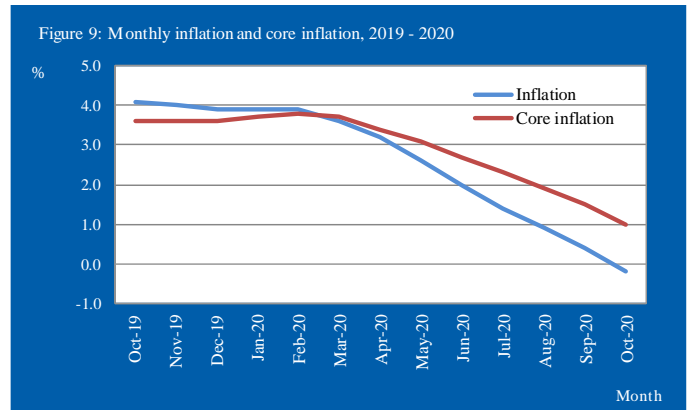
Period	Inflation	Food	Energy ²	Core Inflation
Oct-19	4.1	11.2	2.4	3.6
Nov-19	4.0	11.0	1.9	3.6
Dec-19	3.9	10.5	1.8	3.6
Jan-20	3.9	9.9	1.5	3.7
Feb-20	3.9	9.3	1.3	3.8
Mar-20	3.6	8.3	0.7	3.7
Apr-20	3.2	7.4	-0.2	3.4
May-20	2.6	6.2	-1.5	3.1
Jun-20	2.0	4.9	-2.7	2.7
Jul-20	1.4	3.7	-3.6	2.3
Aug-20	0.9	2.6	-4.6	1.9
Sep-20	0.4	1.6	-5.4	1.5
Oct-20	-0.2	0.7	-6.2	1.0

Source: Central Bureau of Statistics Aruba

¹ Period average inflation

² Energy : Electricity, water, gasoline and diesel

The monthly inflation and core inflation for Aruba is shown in figure 9 over a period of one year starting from October 2019.



5.3 End of year change of the core inflation, 2015 - 2020

The end of year core inflation of the total population of Aruba for the year 2020 (up to October) is 1.0%, a decrease of 2.6 ppts compared to the core inflation of 2019. Table 10 provides an overview of the end of year inflation and core inflation over the period 2015 - 2020.

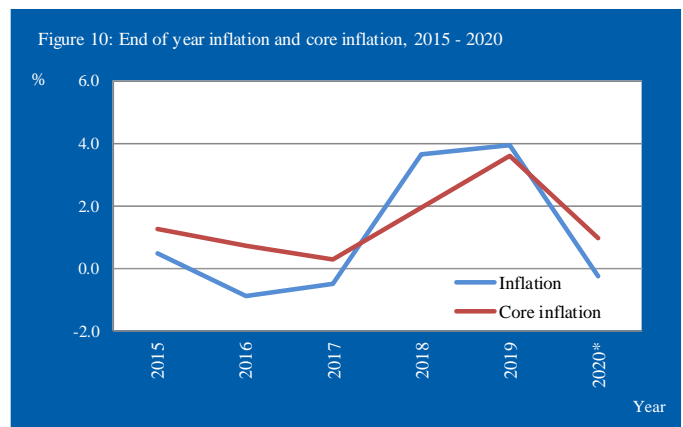
The end of year inflation and core inflation is presented in figure 10 over the period 2015 - 2020.

Table 10: End of year core inflation, 2015 - 2020

Period	2015	2016	2017	2018	2019	2020*
Inflation	0.5	-0.9	-0.5	3.6	3.9	-0.2
Food	1.9	-0.1	0.8	12.2	10.5	0.7
Electricity	8.5	-9.9	-14.0	0.0	2.1	-7.3
Water	0.0	0.0	0.0	0.0	2.1	0.8
Gasoline and diesel	-20.1	-7.9	9.2	13.9	1.0	-9.9
Core inflation	1.3	0.7	0.3	1.9	3.6	1.0

Source: Central Bureau of Statistics Aruba

Note: the figures for the years 2014-2017 are based on the weights of Dec 2006=100
*current month



Note: the figures for the years 2014-2017 are based on the weights of Dec 2006=100

6 Development of Food & catering services

6.1 Monthly change of Food & catering services for October 2020

The “Food & catering services” index showed a slight increase of 0.04% in October 2020, after a decrease of 0.2% in September 2020. The index for “Food at home” showed a slight increase of 0.01% in October, as six (6) of the eleven (11) “Food at home” indices increased in October 2020. The “Vegetables” index registered the largest increase (1.5%) in October 2020. Furthermore, increases were posted in the indices for “Fruit” (1.3%), “Milk, cheese and eggs” (0.6%) and “Food products n.e.c.” (0.1%).

The “Meat” index registered the largest decrease (-1.1%) in October 2020.

Table 11 provides an overview of the corresponding weights per food group together with the percentage changes and effect for October 2020.

Table 11: Percentage change of Food for October 2020

Food	Weight	% Change	Effect
Food & catering services	1,492.8	0.04	0.006
Food at home			
	1,125.3	0.01	0.001
Bread and cereals	205.2	-0.2	-0.003
Meat	229.8	-1.1	-0.027
Fish and other seafood	56.4	-0.4	-0.002
Milk, cheese and eggs	140.0	0.6	0.008
Oils and fats	31.6	-0.1	0.000
Fruit	72.0	1.3	0.012
Potatoes and other tubers	18.5	0.1	0.000
Vegetables	75.7	1.5	0.012
Sugar, jam, honey and other confectionery	49.6	0.0	0.000
Food products n.e.c.	82.7	0.1	0.001
Non-alcoholic beverages	163.9	0.0	0.000
Food away from home			
	367.5	0.1	0.005
Other goods and services			
	8,507.2	-0.2	-0.181
Other goods	5,147.2	-0.3	-0.143
Other services	3,360.0	-0.1	-0.038
CPI	10,000.0	-0.2	-0.175

Source: Central Bureau of Statistics Aruba

In October 2020, “Food at home” and “Food away from home” as a group showed an increase in price of 0.04% compared to September 2020, and had an influence of 0.01 ppt on the CPI, while the remaining goods and services, as a group, experienced a decrease in price of 0.2%, causing an effect of -0.18 pts on the CPI.

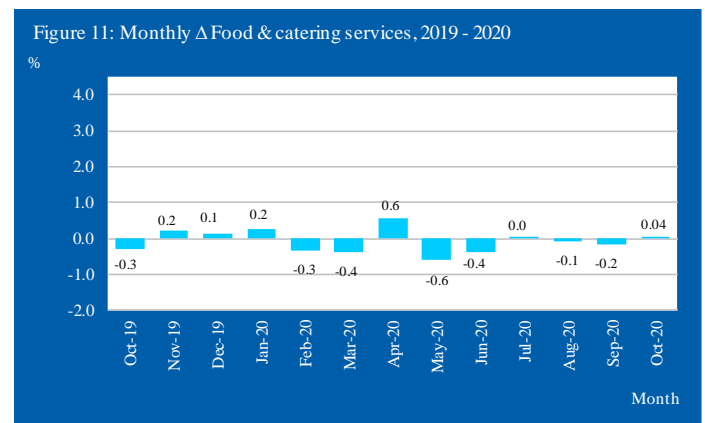
An overview of the percentage change and effect for “Food at home” and “Food away from home” for October 2020 is presented in table 12.

Table 12: Effect on the CPI of October 2020 of “Food at home” and “Food away from home”

Category	Weight	% Change	Effect
Food at home	1,087.7	0.01	0.00
Food away from home	429.8	0.1	0.00
Total group	1,517.5	0.04	0.01
Remaining goods and services	8,482.5	-0.2	-0.18
CPI	10,000.0	-0.2	-0.18

Source: Central Bureau of Statistics Aruba

Figure 11 depicts the monthly Δ Food and catering services over a period of one year starting from October 2019.



6.2 End of Period change of Food & catering services for October 2020

Over the last twelve (12) months, the “Food & catering services” has decreased by 0.7%. The “Food at home” index showed a decrease of 1.9%. The “Potatoes and other tubers” index decreased by 13.5%, the largest decrease among the “Food at home” food groups, while the “Milk, cheese and eggs” index increased by 0.3%, the largest increase among the “Food at home” food groups.

The index for “Food away from home” shows an increase of 0.1% in October 2020 and has increased by 2.1% over the last twelve (12) months.

Table 18 provides an overview of the monthly and end of period percentage changes and effect for October 2020 for the food groups.

7 Subsistence level

7.1 Subsistence level

The subsistence level is the minimum level of income which is perceived necessary to achieve an adequate standard of living in a given country. The subsistence level is usually determined by estimating the cost of all the essential resources that an average adult consumes in one month or year. This is commonly called a basic needs index, and varies according to the price of food, clothing, housing, transport and other items in the "basket". Equivalence scales are used to adjust for the assumed standard of living, of households of different sizes and composition. The scale assigns a weight of 1.0 for the first adult and 0.5 for each additional adult in the household (aged 15+) and a weight of 0.3 for each child (aged 0-14 years). The subsistence level is based on figures of the report "Bestaansminimum 2010" published by the CBS in December 2010 and is monthly updated for inflation using the monthly CPI. The reference unit used in this report is one of a household consisting of two adults and two children (aged 0-14 years).

7.2 Monthly change of the subsistence level for October 2020

Table 13 provides an overview of the subsistence level for a family of two adults and two children (aged 0-14 years) by sector registered over a period of 5 years for the month October. Over a period of one year the subsistence level decreased by Afl. 125, from Afl. 4,898 in October 2019 to Afl. 4,773 in October 2020. The "Food and non-alcoholic beverages" sector shows the largest decrease (Afl. 36), over this period.

Table 13: Monthly subsistence level in Aruba (in Afl.) by sector for a family of 2 adults and 2 child (aged 0-14 years) for October, 2016 - 2020

Sector	Oct-16	Oct-17	Oct-18	Oct-19	Oct-20	Change in Afl.	
						Oct-19	Oct-20
Food and non-alcoholic beverages	1,661	1,643	1,785	1,939	1,903		-36
Clothing and footwear	250	255	266	274	254		-20
Housing	1,470	1,422	1,424	1,483	1,451		-32
Household operation	113	110	114	113	105		-8
Health	73	73	82	83	81		-2
Transport	257	260	284	289	269		-20
Communications	134	135	141	152	152		0
Recreation and culture	161	149	152	163	159		-4
Education	68	71	72	74	74		0
Miscellaneous goods and services	312	311	318	328	325		-3
Total	4,499	4,429	4,638	4,898	4,773		-125

Source: Central Bureau of Statistics Aruba

An overview of the subsistence level, for the most common family types, over the period October 2019 - October 2020 is presented in table 14.

Table 14: Subsistence level in Aruba (in Afl.) by family size and composition, October 2020 (Base period October 2010)

Period	Equivalence scales				
	1	1.3	1.5	1.8	2.1
	1 adult	1 adult + 1 child	2 adults	2 adults + 1 child	2 adults + 2 children
Oct-19	2,332	3,032	3,499	4,198	4,898
Nov-19	2,329	3,028	3,494	4,192	4,891
Dec-19	2,331	3,030	3,496	4,196	4,895
Jan-20	2,314	3,008	3,471	4,165	4,860
Feb-20	2,303	2,994	3,454	4,145	4,836
Mar-20	2,300	2,989	3,449	4,139	4,829
Apr-20	2,296	2,984	3,444	4,132	4,821
May-20	2,283	2,968	3,425	4,110	4,794
Jun-20	2,277	2,960	3,416	4,099	4,782
Jul-20	2,267	2,947	3,400	4,080	4,760
Aug-20	2,276	2,959	3,415	4,098	4,781
Sep-20	2,277	2,960	3,416	4,099	4,782
Oct-20	2,273	2,955	3,410	4,092	4,773

Source: Central Bureau of Statistics Aruba

7.3 Comparison of the subsistence level and minimum wage

In October 2020 the subsistence level for a single adult household is Afl. 2273, which represents an income deficit of Afl. 458, a decrease of Afl. 112 compared to the deficit observed one year ago (Afl. 570). This deficit is the second highest registered over a period of five years for the month October.

Table 15: Monthly income surplus/deficit (in Afl.) for a single adult household for October, 2016 - 2020

Period	Minimum		Surplus/deficit
	1 adult	wage	
2016	2,142	1,678	-464
2017	2,109	1,711	-398
2018	2,208	1,711	-497
2019	2,332	1,762	-570
2020	2,273	1,815	-458

Source: Central Bureau of Statistics Aruba

Table 16: Monthly & Yearly Changes (%) in the Consumer Price Index for October 2020, Total Population (Jun 2019 = 100)

DESCRIPTION	WEIGHT coefficient	2019 Oct	2019 Dec	2020 Sep	2020 Oct	Monthly Sep - Oct	Ytd Dec - Oct	End of period Oct 20 - Oct 21	Period average Oct 20 - Oct 21
Food and non-alcoholic beverages	1,087.7	99.29	99.16	97.43	97.44	0.0	-1.7	-1.9	1.0
Food	964.1	99.10	98.94	97.05	97.06	0.0	-1.9	-2.1	0.7
Non-alcoholic beverages	123.6	100.76	100.81	100.40	100.43	0.0	-0.4	-0.3	3.6
Alcoholic beverages and tobacco	78.2	100.06	99.81	100.56	100.59	0.0	0.8	0.5	6.0
Alcoholic beverages for consumption at home	62.2	99.74	99.43	99.35	99.37	0.0	-0.1	-0.4	5.7
Tobacco	16.0	101.29	101.29	105.27	105.36	0.1	4.0	4.0	6.9
Clothing and footwear	276.8	100.29	98.18	94.02	92.99	-1.1	-5.3	-7.3	-2.8
Clothing	212.8	99.05	95.84	95.31	92.33	-3.1	-3.7	-6.8	-3.0
Footwear	64.0	104.44	105.98	89.71	95.22	6.1	-10.2	-8.8	-2.5
Housing	2,522.2	100.42	100.37	98.49	98.27	-0.2	-2.1	-2.1	-0.7
Actual rentals for housing	666.7	100.50	100.75	101.88	102.00	0.1	1.2	1.5	2.4
Imputed rentals for housing	34.4	100.91	100.91	100.25	98.60	-1.6	-2.3	-2.3	0.8
Maintenance and repair of the dwelling	517.0	101.35	99.55	104.09	102.93	-1.1	3.4	1.6	3.3
Water supply and miscellaneous services relating to the dwelling	463.6	100.00	101.35	101.35	101.35	0.0	0.0	1.3	2.1
Electricity, gas and other fuels	840.4	100.00	100.00	90.72	90.72	0.0	-9.3	-9.3	-7.0
Household operation	929.2	101.77	99.82	93.96	94.20	0.3	-5.6	-7.4	-2.7
Furniture, furnishings, carpets and other floor coverings	128.8	100.92	97.33	70.38	75.36	7.1	-22.6	-25.3	-11.8
Household textiles	58.6	93.75	96.75	86.43	84.00	-2.8	-13.2	-10.4	-12.9
Household appliances	246.0	107.79	103.31	91.57	89.34	-2.4	-13.5	-17.1	-4.3
Glassware, tableware and household utensils	17.2	99.73	90.58	92.42	97.54	5.5	7.7	-2.2	-2.1
Tools and equipment for house and garden	58.2	100.01	96.55	110.07	112.59	2.3	16.6	12.6	-2.2
Goods and services for routine household maintenance and cleaning	420.5	99.96	99.79	101.46	101.56	0.1	1.8	1.6	2.5
Health	223.1	100.45	100.03	99.19	98.53	-0.7	-1.5	-1.9	0.3
Medical products, appliances and equipment	152.3	100.43	99.72	98.64	97.60	-1.1	-2.1	-2.8	-0.2
Out-patient services	52.4	100.00	100.00	100.00	99.98	0.0	0.0	0.0	0.8
Other treatments	7.8	100.49	99.66	97.85	97.83	0.0	-1.8	-2.6	0.3
Health products and services n.e.c.	10.5	103.07	104.95	104.10	105.30	1.2	0.3	2.2	3.8
Transport	1,257.4	99.23	100.77	92.43	92.32	-0.1	-8.4	-7.0	-3.8
Purchase of vehicles	442.6	100.00	106.03	95.19	94.81	-0.4	-10.6	-5.2	-1.0
Operation of personal transport equipment	763.3	98.77	98.12	91.43	91.02	-0.4	-7.2	-7.8	-5.4
Transport services	51.5	99.51	94.78	83.67	90.25	7.9	-4.8	-9.3	-4.9
Communications	849.6	99.37	99.60	99.45	99.74	0.3	0.1	0.4	0.8
Telephone and telefax equipment	43.8	87.82	92.26	89.35	94.98	6.3	3.0	8.2	-10.1
Telephone and telefax services	805.8	100.00	100.00	100.00	100.00	0.0	0.0	0.0	1.4
Recreation and culture	1,013.3	97.79	100.48	95.93	95.23	-0.7	-5.2	-2.6	2.4
Audio-visual, photographic and information processing equipment	58.5	100.14	91.44	72.62	81.63	12.4	-10.7	-18.5	-16.7
Other major durables for recreation and culture	20.0	99.85	90.44	102.81	97.22	-5.4	7.5	-2.6	1.0
Other recreational items and equipment; gardens and pets	266.6	101.65	101.52	103.65	102.81	-0.8	1.3	1.1	3.9
Recreational and cultural services	309.1	98.67	99.24	99.77	99.78	0.0	0.5	1.1	0.6
Newspapers, books and stationery	43.7	98.34	93.94	91.32	88.13	-3.5	-6.2	-10.4	-5.6
Holidays	315.4	93.03	104.03	90.18	87.74	-2.7	-15.7	-5.7	8.5
Education	98.0	100.00	100.00	100.17	100.17	0.0	0.2	0.2	0.9
Pre primary and primary education	24.0	100.00	100.00	100.00	100.00	0.0	0.0	0.0	0.8
Secondary education	43.4	100.00	100.00	100.00	100.00	0.0	0.0	0.0	0.8
Post-secondary non-tertiary education	4.6	100.00	100.00	100.00	100.00	0.0	0.0	0.0	0.8
Tertiary education	23.6	100.00	100.00	100.00	100.00	0.0	0.0	0.0	0.8
Education not definable by level	2.5	100.00	100.00	106.67	106.67	0.0	6.7	6.7	6.4
Restaurants and hotels	442.0	100.53	103.89	101.79	101.90	0.1	-1.9	1.4	4.2
Catering services	429.8	100.33	101.81	102.34	102.45	0.1	0.6	2.1	3.9
Accommodation services	12.2	107.62	177.44	82.35	82.44	0.1	-53.5	-23.4	14.1
Miscellaneous goods and services	1,222.6	99.51	99.33	98.94	98.64	-0.3	-0.7	-0.9	0.6
Personal care	427.1	99.09	98.77	97.02	97.20	0.2	-1.6	-1.9	0.3
Personal effects n.e.c.	106.6	98.05	97.24	99.03	94.78	-4.3	-2.5	-3.3	0.2
Social protection	78.2	100.00	100.00	100.00	100.00	0.0	0.0	0.0	0.8
Insurance	610.7	100.00	100.00	100.14	100.14	0.0	0.1	0.1	0.9
CPI	10,000.0	99.80	100.13	97.14	96.97	-0.2	-3.2	-2.8	-0.2

Source: Central Bureau of Statistics Aruba

Table 17: Monthly & Yearly Effect on the Consumer Price Index per sector and category for October 2020 (Jun 2019 = 100)

DESCRIPTION	WEIGHT coefficient	Monthly Sep - Oct	Ytd Dec - Oct	End of period Oct 20 - Oct 21	Period average Oct 20 - Oct 21
Food and non-alcoholic beverages	1,087.7	0.00	-0.19	-0.20	0.11
Food	964.1	0.00	-0.18	-0.20	0.07
Non-alcoholic beverages	123.6	0.00	0.00	0.00	0.04
Alcoholic beverages and tobacco	78.2	0.00	0.01	0.00	0.05
Alcoholic beverages for consumption at home	62.2	0.00	0.00	0.00	0.03
Tobacco	16.0	0.00	0.01	0.01	0.01
Clothing and footwear	276.8	-0.03	-0.14	-0.20	-0.08
Clothing	212.8	-0.07	-0.07	-0.14	-0.06
Footwear	64.0	0.04	-0.07	-0.06	-0.02
Housing	2,522.2	-0.06	-0.53	-0.54	-0.17
Actual rentals for housing	666.7	0.01	0.08	0.10	0.16
Imputed rentals for housing	34.4	-0.01	-0.01	-0.01	0.00
Maintenance and repair of the dwelling	517.0	-0.06	0.17	0.08	0.17
Water supply and miscellaneous services relating to the dwelling	463.6	0.00	0.00	0.06	0.10
Electricity, gas and other fuels	840.4	0.00	-0.78	-0.78	-0.59
Household operation	929.2	0.02	-0.52	-0.70	-0.26
Furniture, furnishings, carpets and other floor coverings	128.8	0.07	-0.28	-0.33	-0.16
Household textiles	58.6	-0.01	-0.07	-0.06	-0.08
Household appliances	246.0	-0.06	-0.34	-0.45	-0.11
Glassware, tableware and household utensils	17.2	0.01	0.01	0.00	0.00
Tools and equipment for house and garden	58.2	0.02	0.09	0.07	-0.01
Goods and services for routine household maintenance and cleaning	420.5	0.00	0.07	0.07	0.11
Health	223.1	-0.02	-0.03	-0.04	0.01
Medical products, appliances and equipment	152.3	-0.02	-0.03	-0.04	0.00
Out-patient services	52.4	0.00	0.00	0.00	0.00
Other treatments	7.8	0.00	0.00	0.00	0.00
Health products and services n.e.c.	10.5	0.00	0.00	0.00	0.00
Transport	1,257.4	-0.01	-1.06	-0.87	-0.48
Purchase of vehicles	442.6	-0.02	-0.50	-0.23	-0.05
Operation of personal transport equipment	763.3	-0.03	-0.54	-0.59	-0.41
Transport services	51.5	0.03	-0.02	-0.05	-0.02
Communications	849.6	0.03	0.01	0.03	0.07
Telephone and telefax equipment	43.8	0.03	0.01	0.03	-0.05
Telephone and telefax services	805.8	0.00	0.00	0.00	0.11
Recreation and culture	1,013.3	-0.07	-0.53	-0.26	0.24
Audio-visual, photographic and information processing equipment	58.5	0.05	-0.06	-0.11	-0.10
Other major durables for recreation and culture	20.0	-0.01	0.01	-0.01	0.00
Other recreational items and equipment; gardens and pets	266.6	-0.02	0.03	0.03	0.10
Recreational and cultural services	309.1	0.00	0.02	0.03	0.02
Newspapers, books and stationery	43.7	-0.01	-0.03	-0.04	-0.02
Holidays	315.4	-0.08	-0.51	-0.17	0.25
Education	98.0	0.00	0.00	0.00	0.01
Pre primary and primary education	24.0	0.00	0.00	0.00	0.00
Secondary education	43.4	0.00	0.00	0.00	0.00
Post-secondary non-tertiary education	4.6	0.00	0.00	0.00	0.00
Tertiary education	23.6	0.00	0.00	0.00	0.00
Education not definable by level	2.5	0.00	0.00	0.00	0.00
Restaurants and hotels	442.0	0.01	-0.09	0.06	0.19
Catering services	429.8	0.00	0.03	0.09	0.17
Accommodation services	12.2	0.00	-0.12	-0.03	0.02
Miscellaneous goods and services	1,222.6	-0.04	-0.08	-0.11	0.08
Personal care	427.1	0.01	-0.07	-0.08	0.01
Personal effects n.e.c.	106.6	-0.05	-0.03	-0.03	0.00
Social protection	78.2	0.00	0.00	0.00	0.01
Insurance	610.7	0.00	0.01	0.01	0.06
CPI	10,000.0	-0.18	-3.16	-2.84	-0.24

Source: Central Bureau of Statistics Aruba

Table 18: Monthly & Yearly Changes (%) and effect in the Food & catering services for October 2020, Total Population (Jun 2019 = 100)

DESCRIPTION	WEIGHT coefficient	% Change		Effect	
		Monthly Sep - Oct	End of period Oct 20 - Oct 21	Monthly Sep - Oct	End of period Oct 20 - Oct 21
Food & catering services	1,517.5	0.04	-0.7	0.006	-0.111
Food at home	1,087.7	0.01	-1.9	0.001	-0.202
Bread and cereals	178.1	-0.2	-1.2	-0.003	-0.022
Rice	23.5	0.8	1.3	0.002	0.003
Bread	72.1	-0.8	-0.5	-0.006	-0.003
Pasta products	9.2	0.0	-2.6	0.000	-0.002
Other cereals and cereal products	73.3	0.1	-2.6	0.000	-0.019
Meat	242.5	-1.1	-1.2	-0.027	-0.029
Bovine	67.3	-1.0	2.0	-0.007	0.013
Swine	25.5	0.1	1.6	0.000	0.004
Poultry	75.7	-3.0	-9.0	-0.022	-0.068
Other meat and meat preparations	74.0	0.3	2.9	0.002	0.022
Fish and other seafood	49.0	-0.4	-2.3	-0.002	-0.011
Fish and seafood preparations	49.0	-0.4	-2.3	-0.002	-0.011
Milk, cheese and eggs	135.3	0.6	0.3	0.008	0.005
Cheese	55.4	-0.4	2.1	-0.002	0.012
Eggs	16.6	5.2	4.5	0.008	0.007
Milk	40.0	0.3	-2.6	0.001	-0.010
Other milk products	23.3	0.1	-1.6	0.000	-0.004
Oils and fats	32.2	-0.1	-1.5	0.000	-0.005
Corn oil	2.8	0.4	-0.7	0.000	0.000
Butter and margarine	9.2	1.8	-0.2	0.002	0.000
Other oils and fats	20.1	-0.9	-2.3	-0.002	-0.005
Fruit	97.6	1.3	-3.7	0.012	-0.035
Oranges	9.4	6.5	30.1	0.008	0.030
Bananas and plantains	19.9	-0.7	-19.5	-0.001	-0.034
Apples	9.3	5.3	-0.4	0.005	0.000
Avocado	5.0	-1.4	0.1	-0.001	0.000
Grapes	9.2	-0.5	8.0	0.000	0.006
Nuts	11.9	-0.1	-2.6	0.000	-0.003
Lemons and mandarins	6.0	2.0	-19.4	0.001	-0.011
Cherries and strawberries	8.8	2.6	-2.3	0.003	-0.002
Melons and watermelons	7.7	-1.1	-7.5	-0.001	-0.006
Papayas and pineapples	6.9	-2.4	-14.2	-0.001	-0.010
Other fruits and fruit products	3.5	0.7	-11.5	0.000	-0.004
Potatoes and other tubers	18.2	0.1	-13.5	0.000	-0.023
Potatoes	12.2	0.3	-16.9	0.000	-0.019
Other tubers	2.0	0.1	3.0	0.000	0.001
Sweet potatoes and yucca	4.0	-0.6	-12.4	0.000	-0.005
Vegetables	89.1	1.5	-8.6	0.012	-0.074
Lettuce	6.8	16.7	-29.2	0.007	-0.020
Tomatoes	9.7	-2.0	-15.1	-0.002	-0.016
Onions and garlic	18.7	-1.7	-11.6	-0.003	-0.021
Celery and broccoli	15.3	4.9	-6.2	0.006	-0.008
Other vegetables	15.3	1.6	-4.4	0.002	-0.006
Other preserved or processed vegetables	8.4	0.1	2.5	0.000	0.002
Frozen vegetable mixtures	14.8	0.7	-3.3	0.001	-0.005
Sugar, jam, honey and other confectionery	42.0	0.0	0.2	0.000	0.001
Sugar	12.1	0.0	1.7	0.000	0.002
Jams and jellies	2.5	0.8	1.0	0.000	0.000
Other confectionery products	27.5	-0.1	-0.6	0.000	-0.002
Food products n.e.c.	80.1	0.1	-0.6	0.001	-0.005
Other food products	80.1	0.1	-0.6	0.001	-0.005
Non-alcoholic beverages	123.6	0.0	-0.3	0.000	-0.004
Coffee and tea	20.9	-0.8	-0.2	-0.002	-0.001
Other non-alcoholic beverages	14.6	0.4	0.7	0.001	0.001
Soft and sports drinks	31.0	0.0	0.3	0.000	0.001
Fruit juices	57.1	0.3	-0.9	0.002	-0.005
Food away from home	429.8	0.1	2.1	0.005	0.091
Food and beverage consumption away from home	429.8	0.1	2.1	0.005	0.091
Other goods and services	8,482.5	-0.2	-3.2	-0.181	-2.726
Other goods	4,735.8	-0.3	-5.8	-0.143	-2.743
Other services	3,746.7	-0.1	0.0	-0.038	0.017
CPI	10,000	-0.2	-2.84	-0.175	-2.836

Source: Central Bureau of Statistics Aruba

Table 19: CPI: Main indices for October 2020, Total Population (Jun 2019 = 100)

DESCRIPTION	WEIGHT coefficient	2019 Oct	2019 Dec	2020 Sep	2020 Oct	Monthly Sep - Oct	Ytd Dec - Oct	End of period Oct 19 - Oct 20	Period average Oct 19 - Oct 20
CPI for "All items"	10,000.0	99.80	100.13	97.14	96.97	-0.2	-3.2	-2.8	-0.2
CPI for "Goods"	6,272.5	100.03	99.63	95.22	94.98	-0.2	-4.7	-5.0	-2.0
CPI for "Durable goods"	1,293.2	101.20	101.22	93.03	93.23	0.2	-7.9	-7.9	-3.2
CPI for "Semi-durable goods"	954.1	99.36	97.85	95.63	94.11	-1.6	-3.8	-5.3	-2.7
CPI for "Non-durable goods"	4,025.2	99.75	99.40	95.88	95.71	-0.2	-3.7	-4.1	-1.5
CPI for "Services"	3,727.5	99.49	100.83	99.82	99.74	-0.1	-1.1	0.3	2.2
CPI for "Gasoline" and "Diesel"	552.3	97.85	97.12	85.39	84.61	-0.9	-12.9	-13.5	-9.9
CPI for "Food at home"	961.4	99.10	98.94	97.05	97.06	0.0	-1.9	-2.1	0.7
CPI excluding "Food and non-alcoholic beverages"	8,874.7	99.87	100.25	97.11	96.91	-0.2	-3.3	-3.0	-0.4
CPI excluding "Gasoline" and "Diesel"	9,447.7	99.90	100.28	97.71	97.57	-0.1	-2.7	-2.3	0.2
CPI excluding "Food and non-alcoholic beverages", "Gasoline" and "Diesel"	8,322.4	99.98	100.42	97.75	97.59	-0.2	-2.8	-2.4	0.1
CPI excluding "Rentals actually paid by tenants or subtenants"	9,145.8	99.75	100.09	96.80	96.61	-0.2	-3.5	-3.1	-0.4
CPI excluding "Housing"	7,446.7	99.59	100.06	96.69	96.54	-0.2	-3.5	-3.1	-0.1
CPI excluding "Gasoline", "Diesel", "Water" and "Electricity"	8,289.2	99.88	100.32	98.32	98.16	-0.2	-2.2	-1.7	0.9

Source: Central Bureau of Statistics Aruba

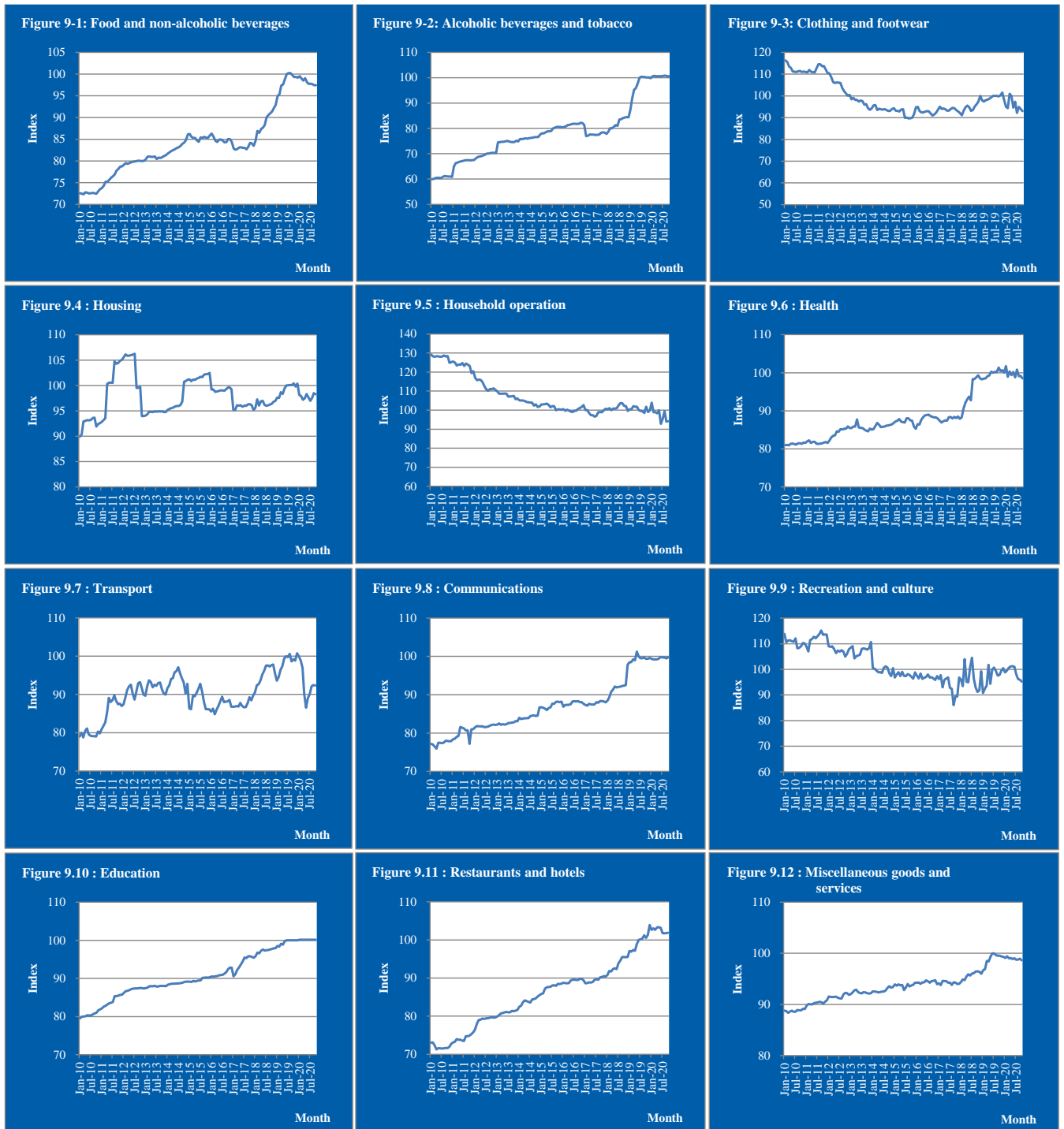
APPENDIX 5

Table 20: CPI: Effect on main indices for October 2020, Total Population (Jun 2019 = 100)

DESCRIPTION	WEIGHT coefficient	Monthly Sep - Oct	Ytd Dec - Oct	End of period Oct 19 - Oct 20	Period average Oct 19 - Oct 20
CPI for "All items"	10,000.0	-0.18	-3.16	-2.84	-0.24
CPI for "Goods"	6,272.5	-0.14	-2.70	-2.94	-1.17
CPI for "Durable goods"	1,293.2	0.03	-1.03	-1.03	-0.43
CPI for "Semi-durable goods"	954.1	-0.10	-0.24	-0.33	-0.18
CPI for "Non-durable goods"	4,025.2	-0.07	-1.43	-1.58	-0.57
CPI for "Services"	3,727.5	-0.03	-0.45	0.11	0.93
CPI for "Gasoline" and "Diesel"	552.3	-0.04	-0.58	-0.61	-0.45
CPI for "Food at home"	961.4	0.00	-0.18	-0.20	0.07
CPI excluding "Food and non-alcoholic beverages"	8,874.7	-0.18	-2.97	-2.63	-0.35
CPI excluding "Gasoline" and "Diesel"	9,447.7	-0.14	-2.58	-2.23	0.21
CPI excluding "Food and non-alcoholic beverages", "Gasoline" and "Diesel"	8,322.4	-0.14	-2.40	-2.02	0.10
CPI excluding "Rentals actually paid by tenants or subtenants"	9,145.8	-0.18	-3.24	-2.94	-0.40
CPI excluding "Housing"	7,446.7	-0.12	-2.63	-2.29	-0.07
CPI excluding "Gasoline", "Diesel", "Water" and "Electricity"	8,289.2	-0.14	-1.80	-1.44	0.78

Source: Central Bureau of Statistics Aruba

Course of Indices for 2010 up to October 2020



Glossary

The Consumer Price Index and Inflation

The Consumer Price Index (CPI) measures changes in prices of consumer goods and services by households. Consumer price indices can be intended to measure either the rate of price inflation or deflation as perceived by households or changes in their cost of living. In case of inflation, the percentage change is positive and it indicates a decrease in the purchasing power of the consumers.

Monthly percentage change

Percentage change in price indices of any aggregates of the CPI in relation to the respective price indices of the previous month.

Year-to-date (ytd)

Percentage change in price indices of any aggregates of the CPI in relation to the respective price indices of December prior to the year under review.

End of period inflation (last 12 months)

Percentage change in price indices of any aggregates of the CPI in relation to the respective price indices of the same month of the previous year.

Period average inflation (last 24 months)

The period average inflation is calculated by comparing the annual average CPI of the concerning period with the annual average CPI of the concerning period of the previous year.

Effect

Contribution of all percentage changes (of all respective aggregates) to the CPI.

Core inflation

Core inflation is a measure of inflation that excludes certain items, which face volatile price movements. Core inflation eliminates the inflation of certain products that can have temporary price shocks because these shocks can diverge from the overall trend of inflation and give a false measure of inflation. The core rate of inflation is calculated by: total inflation excluding food and energy prices. In part, that is because the core is less volatile and reflects better the relationship of supply and demand in domestic product markets. The core usually is a better measure of the basic rate of inflation that will tend to emerge in the absence of supply shocks.

Food & catering services

The “Food & catering services” index is composed of the indices for the “Food & Non-alcoholic beverages” sector (“Food at home”) and the “Catering services” (“Food away from home”) category.

Subsistence level

The subsistence level is the minimum level of income, which is perceived necessary to achieve an adequate standard of living in a given country. The subsistence level is usually determined by estimating the cost of all the essential resources that an average adult consumes in one month or year. This is commonly called a basic needs index, and varies according to the price of food, clothing, housing, transport and other items in the “basket”. The subsistence level is monthly updated for inflation using the monthly CPI.