



Table of Contents

A note to the reader.....	ii
1 MONTHLY CHANGE OF THE CPI	1
1.1 CPI AND INFLATION	1
1.2 CHANGES IN SECTOR	1
1.3 CHANGES IN CATEGORIES AND SUBCATEGORIES	1
2 END OF PERIOD CHANGE OF THE CPI	2
2.1 END OF PERIOD CHANGE CPI FOR AUGUST 2018	2
2.2 CHANGES IN SECTOR	2
2.3 CHANGES IN CATEGORIES	2
2.4 END OF YEAR CHANGE CPI 2009 - 2018	2
2.5 PERIOD AVERAGE CHANGE CPI FOR AUGUST 2018	2
3 DEVELOPMENT OF INDICES OF MAIN SECTORS AND UTILITIES.....	3
3.1 INDICES MAIN SECTORS	3
3.2 ELECTRICITY	3
3.3 WATER	3
3.4 GASOLINE AND DIESEL.....	3
4 PERCENTAGE CHANGE CPI OF ARUBA’S MAJOR TRADING PARTNERS	4
4.1 COMPARISON OF THE CPI OF ARUBA AND THE USA	4
5 CORE INFLATION	5
5.1 CORE INFLATION	5
5.2 MONTHLY CHANGE OF THE CORE INFLATION.....	5
5.3 END OF YEAR CHANGE OF THE CORE INFLATION, 2013 - 2018	5
6 DEVELOPMENT OF FOOD & CATERING SERVICES	6
6.1 MONTHLY CHANGE OF FOOD & CATERING SERVICES FOR AUGUST 2018	6
6.2 END OF PERIOD CHANGE OF FOOD & CATERING SERVICES FOR AUGUST 2018	6
7 SUBSISTENCE LEVEL.....	7
7.1 SUBSISTENCE LEVEL.....	7
7.2 MONTHLY CHANGE OF THE SUBSISTENCE LEVEL FOR AUGUST 2018	7
7.3 COMPARISON OF THE SUBSISTENCE LEVEL AND MINIMUM WAGE	7
APPENDICES	
APPENDIX 1: MONTHLY AND YEARLY % CHANGES IN THE CPI FOR AUGUST 2018.....	8
APPENDIX 2: EFFECT ON THE CPI PER SECTOR AND CATEGORY FOR AUGUST 2018	9
APPENDIX 3: MONTHLY & YEARLY CHANGES (%) AND EFFECT IN THE FOOD & CATERING SERVICES FOR AUGUST 2018	10
APPENDIX 4: MONTHLY AND YEARLY % CHANGES AND EFFECT IN THE MAIN INDICES FOR AUGUST 2018	11
APPENDIX 5: COURSE OF INDICES FOR 2010 – UP TO AUGUST 2018	12
APPENDIX 6: GLOSSARY	13

A note to the reader

The following report presents the price statistics for August 2018.

- At the end of August 2018 the Consumer Price Index (CPI) shows a decrease of 0.2% compared to the end of July 2018. The sector which affected the CPI the most was “Recreation and culture” (-3.2%), which led to an effect of -0.27 percentage points (ppts) on the Δ CPI of August 2018 (-0.2%).
- Compared to August 2017 the CPI increased by 5.0%. The sector which affected the CPI the most was “Transport” (10.5%). Specifically, the prices of “Operation of personal transport equipment” (16.3%) registered an increase and caused an effect of 1.39 ppts on the end of period inflation of August 2018 (5.0%).
- The period average inflation for the period August 2017 - August 2018 is 1.8%, which is 2.2 ppts higher compared to the period average inflation for the period August 2016 - August 2017 (-0.4%).
- Utilities (Water and Electricity) did not register price changes in August 2018. The price of gasoline increased by 1.1% and caused an effect of 0.06 ppts. The price of diesel registered a decrease of 0.1% in August 2018 and had an insignificant effect on the Δ CPI of August 2018 (-0.2%).

This report is divided in 7 sections. An overview of the monthly percentage changes in the CPI and index per sector is presented in section 1. Section 2 provides the yearly percentage changes in the CPI and index per sector. The development of indices of main sectors and utilities is outlined in section 3. Section 4 presents the percentage change in the CPI of Aruba’s major trading partners and compares the CPI of Aruba and the USA. Section 5 presents an overview of the monthly and yearly percentage changes of the core inflation. Section 6 presents the price movements in food & catering services. The development of the subsistence level is presented in section 7 and is followed by the appendices.

For other specific information contact us at CBS or visit www.cbs.aw.

Contact information:

Central Bureau of Statistics
L.G. Smith Boulevard 160
Oranjestad - Aruba
Phone: 524-7436
Fax: 583-8057
E-mail: LdSilva@cbs.aw

1 Monthly change of the CPI

1.1 CPI and Inflation

The CPI of the total population of Aruba for the month of August 2018 is 122.16; a decrease of 0.2% compared to the CPI of July 2018 (122.47). An overview of the percentage change in the CPI (Δ CPI) for different periods during 2017 and 2018 is shown in Table 1. The terms percentage change in the CPI and “inflation” (deflation) are considered similar and are used interchangeably. The inflation over the last 12 months (end of period inflation) is 5.0%, while the inflation over a period of 24 months (period average inflation) is 1.8%.

Table 1: Overview of Δ CPI

Period	2018	2017	Current	Last
Monthly Jul - Aug	-0.2	-0.2	122.16	122.47
Year-to-date Dec - Aug	3.9	-1.4	122.16	117.63
Last 12 months ¹ Aug - Aug	5.0	-0.7	122.16	116.32
Last 24 months ² Aug - Aug	1.8	-0.4	119.06	116.94

Source: Central Bureau of Statistics Aruba

¹ End of period inflation

² Period average inflation

Figure 1 depicts the monthly Δ CPI over a period of one year starting from August 2017, whereas the Δ CPI for the month August for the years 2009 to 2018 is illustrated in Figure 2.

1.2 Changes in sector

Figure 3 provides an overview of the percentage changes for the indices per sector for August 2018. The percentage change in index is further denoted as Δ I. The largest Δ I is observed for the sector “Recreation and culture” with a decrease of 3.2%.

1.3 Changes in categories and subcategories

The largest positive and negative Δ I is seen in the categories “Newspapers, books and stationery” (10.1%) and “Holidays” (-21.9%). In the “Food and non-alcoholic beverages” sector an increase of 0.7% is observed for the category “Non-alcoholic beverages”, while the category “Food” registered a decrease of 0.7% in August. In the “Transport” sector the major Δ I is observed for the category “Transport services” (-8.3%), mainly caused by a decrease in “Plane tickets” (-10.4%). In the “Recreation and culture” sector the major Δ I is observed for the category “Holidays” (-21.9%)¹.

The categories which influenced the CPI calculation the most are “Holidays”, “Audio-visual, photographic and information processing equipment” and “Transport services”, which had an effect of respectively, -0.21, -0.15 and -0.12 ppts on the Δ CPI. Reference is made to tables 16 and 17 in Appendices 1 and 2. Table 16 provides an overview of the indices for the months

August 2017, December 2017, July 2018 and August 2018 together with corresponding weights per sector and the monthly, year-to-date (ytd), end of period and period average percentage changes for August 2018. In table 17 an overview of the effect on the monthly, year-to-date (ytd), end of period and period average CPI per sector and category for August 2018 is presented. The course of indices for 2010 – up to August 2018 is illustrated in Appendix 5.

Figure 1: Monthly Δ CPI, 2017 - 2018

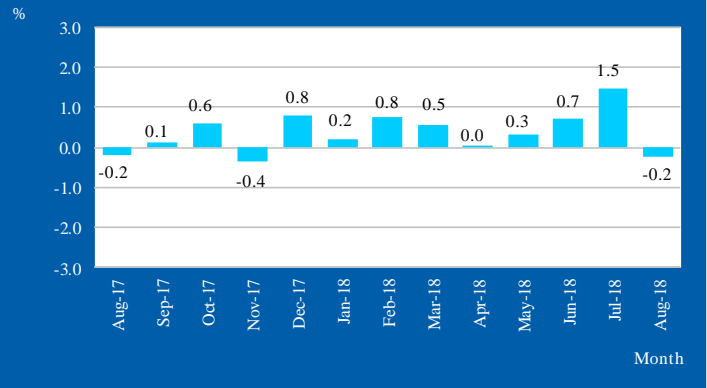


Figure 2: Monthly Δ CPI for August, 2009 - 2018

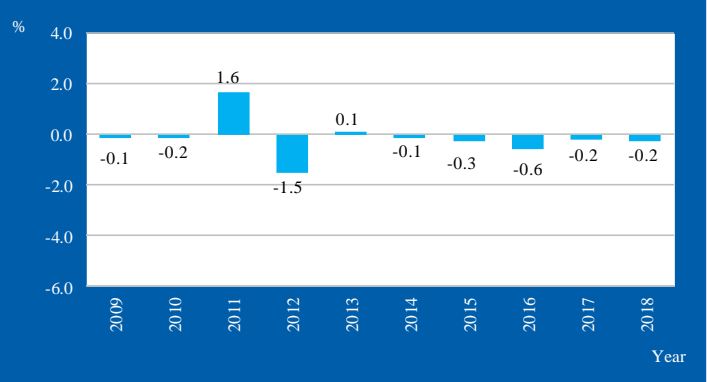
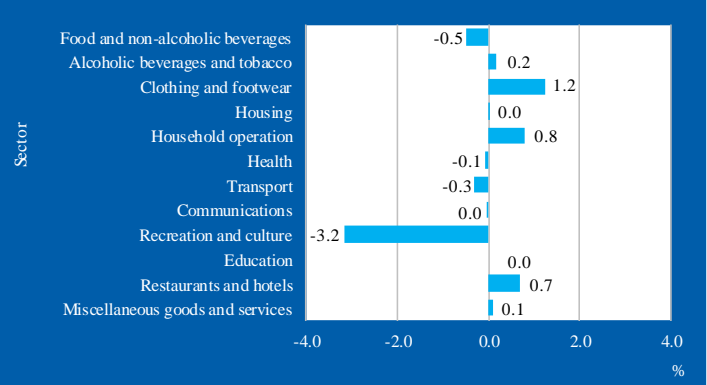


Figure 3: Δ I per sector, August 2018



¹ The focus is on the four major sectors which are: Housing, Transport, Food and non-alcoholic beverages and Recreation and culture. Together these sectors form 64% of the total weight of the basket of goods and services.

2 End of period change of the CPI

2.1 End of period change CPI for August 2018

The CPI increased from 116.32 in August 2017 to 122.16 in August 2018, an increase of 5.0%. This Δ CPI is the highest registered over a period of 5 years for the month August, and is 5.7 ppts higher than the Δ CPI registered in 2017 (-0.7%) (see table 2).

Table 2: End of period Δ CPI for August, 2014 - 2018

Period	Δ CPI	Index
2013-2014	0.4	118.01
2014-2015	0.7	118.83
2015-2016	-1.4	117.17
2016-2017	-0.7	116.32
2017-2018	5.0	122.16

Source: Central Bureau of Statistics Aruba

2.2 Changes in sector

An overview of the percentage change per sector over the period August 2017 - August 2018 is presented in table 3. The largest Δ I is observed for the sector "Transport" with an increase of 10.5%. Furthermore, increases of 10.0%, 9.5% and 7.4% are observed for the "Health", "Food and non-alcoholic beverages" and "Recreation and culture" sectors, respectively. A comparison of the Δ I's for the years 2017 and 2018 is provided in figure 4.

Table 3: Percentage change for August, 2017 - 2018

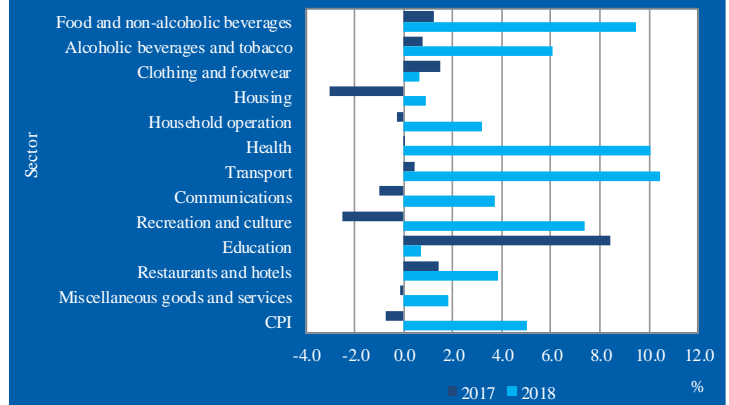
Sector	% Change
Food and non-alcoholic beverages	9.5
Alcoholic beverages and tobacco	6.1
Clothing and footwear	0.6
Housing	0.9
Household operation	3.2
Health	10.0
Transport	10.5
Communications	3.7
Recreation and culture	7.4
Education	0.7
Restaurants and hotels	3.8
Miscellaneous goods and services	1.8
CPI	5.0

Source: Central Bureau of Statistics Aruba

2.3 Changes in categories

The largest positive and negative Δ I in categories observed over a period of one year are respectively, "Holidays" (24.1%) and "Telephone and telefax equipment" (-9.8%). For an overview of the end of period percentage changes per category refer to table 16 in Appendix 1.

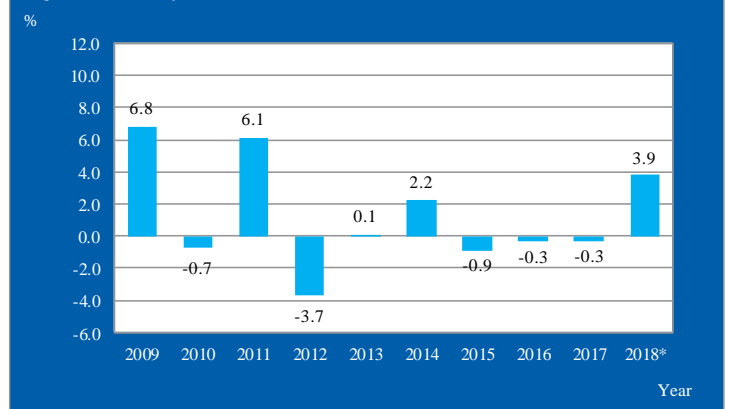
Figure 4: Δ I per sector for August, 2017- 2018



2.4 End of year change CPI 2009 - 2018

The end of year Δ CPI for the period 2009 - 2018 is shown in figure 5. The Δ CPI for 2018 is calculated by comparing the CPI of August 2018 with the CPI of December 2017. At the end of each year, the end of year percentage change equals the ytd Δ CPI. The ytd Δ CPI for August 2018 is 3.9%.

Figure 5: End of year Δ CPI 2009 - 2018



*ytd

2.5 Period average change CPI for August 2018

The period average change CPI (Δ ACPI) for August 2018 is 1.8%. Table 4 provides an overview of the Δ ACPI for the month August for the years 2014 to 2018. The Δ ACPI for 2018 increased by 2.2 ppts compared to 2017 (-0.4%).

Table 4: Overview of Δ ACPI for August, 2014 - 2018

Period	Δ ACPI	Index
2013-2014	-0.3	117.26
2014-2015	1.0	118.49
2015-2016	-0.9	117.37
2016-2017	-0.4	116.94
2017-2018	1.8	119.06

Source: Central Bureau of Statistics Aruba

3 Development of indices of main sectors and utilities

3.1 Indices main sectors

The four major sectors, “Housing”, “Transport”, “Food and non-alcoholic beverages” and “Recreation and culture”, constitute 64% of the total weight of the basket of goods and services, which are observed on a monthly basis. An overview of the course of indices for 2010 – up to August 2018 per sector and for the CPI is provided in figures 9-1 to 9-12 in Appendix 5.

Changes in the indices of the sectors “Housing” and “Transport” are mainly the result of changes in the international oil prices and prices of utilities during the respective months. The development of prices of crude oil, fuel surcharge, electricity, water, gasoline and diesel prices is provided in table 5 and in the adjoining figures 6-1 and 6-2.

Table 5: Prices of utilities, gasoline and diesel, 2017 - 2018

Month	Crude oil per barrel ¹	Total energy charge ²		Electricity ³	Water ⁴	Gasoline ⁵	Diesel ⁵
		≤ 500 kWh	501-1000 kWh				
Aug-17	48.45	34.52	35.72	265.65	137.05	177.60	141.60
Sep-17	49.24	34.52	35.72	265.65	137.05	183.00	147.60
Oct-17	51.31	34.52	35.72	265.65	137.05	188.50	156.60
Nov-17	56.23	34.52	35.72	265.65	137.05	183.60	155.50
Dec-17	57.93	34.52	35.72	265.65	137.05	188.90	160.30
Jan-18	63.38	34.52	35.72	265.65	137.05	186.80	161.90
Feb-18	62.59	34.52	35.72	265.65	137.05	194.30	168.30
Mar-18	62.82	34.52	35.72	265.65	137.05	193.20	165.00
Apr-18	66.14	34.52	35.72	265.65	137.05	195.50	164.60
May-18	70.31	34.52	35.72	265.65	137.05	202.50	172.00
Jun-18	67.77	34.52	35.72	265.65	137.05	208.90	179.70
Jul-18	71.16	34.52	35.72	265.65	137.05	214.80	184.70
Aug-18	68.25	34.52	35.72	265.65	137.05	217.10	184.60

Source: Central Bureau of Statistics Aruba

¹ Average West Texas Intermediate (WTI) crude oil price per barrel in US\$ (Source: U.S. Energy Information Administration)

² Total energy charge in Afl. cents per kWh

³ Electricity price in Afl.

⁴ Water price in Afl.

⁵ Gasoline and diesel prices in Afl. cents per liter

3.2 Electricity

The price of electricity is determined in Aruban florins (Afl.) for an average usage by households. The average usage is 725.5 kWh per month. The electricity price for an average consumption of 725.5 kWh did not change in August 2018, it remained at Afl. 265.65. Figure 6-1 provides an overview of the course of changes in the electricity price for the period 2011 to 2018.

The total energy charge per kWh for a usage of electricity up to 500 kWh did not change in August 2018, it stayed at Afl. 34.52 cents per kWh. The total energy charge per kWh for a usage of electricity between 501 - 1000 kWh did not change in August 2018, it stayed at Afl. 35.72 cents per kWh.

3.3 Water

The price of water is determined in Afl. for an average usage (water consumption) by households. Figure 6-1 provides an overview of the course of changes in the water price for the period 2011 to 2018. The water price for an average usage by households did not change in August 2018, it remained at Afl. 137.05.

3.4 Gasoline and Diesel

The retail price of gasoline increased by 1.1% from 214.8 cents per liter in July 2018 to 217.1 cents per liter in August 2018. In August 2018, the retail price of diesel registered a decrease of 0.1% from 184.7 cents per liter in July 2018 to 184.6 cents per liter in August 2018.

Figure 6-1 Electricity price, water price and energy charge in Afl., 2011 - 2018

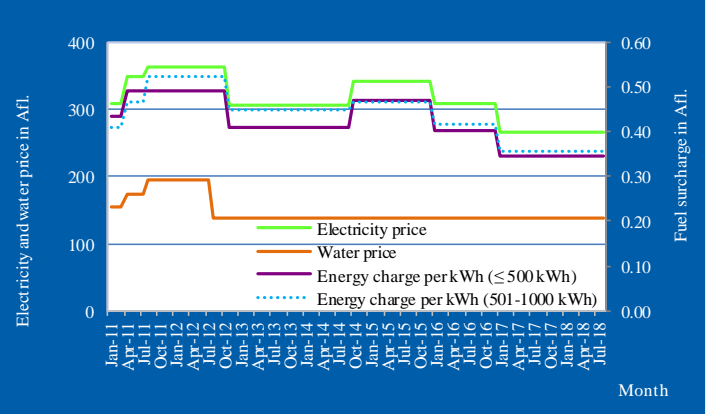
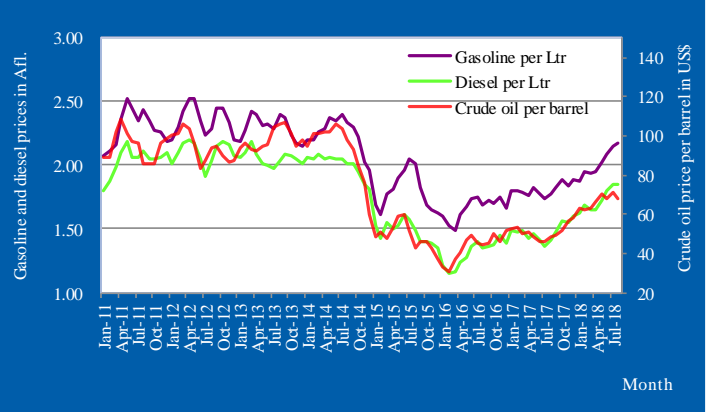


Figure 6-2 Gasoline, diesel and crude oil prices, 2011 - 2018



4 Percentage change CPI of Aruba's major trading partners

4.1 Comparison of the CPI of Aruba and the USA

Table 6 provides an overview of the Δ CPI of Aruba's major trading partners starting from August 2017. In August 2018 the Δ CPI of the USA and the Netherlands were 0.1% and 0.3%. The Δ CPI of Curaçao for August 2018 is not yet available.

Table 6: Monthly Δ CPI 2017 - 2018 per Country

Period	Aruba	USA	Curaçao	Netherlands
Aug-17	-0.2	0.3	0.1	0.2
Sep-17	0.1	0.5	0.2	-0.2
Oct-17	0.6	-0.1	0.1	0.1
Nov-17	-0.4	0.0	0.3	-0.2
Dec-17	0.8	-0.1	0.2	0.0
Jan-18	0.2	0.5	0.6	-0.1
Feb-18	0.8	0.5	0.1	0.5
Mar-18	0.5	0.2	0.4	0.2
Apr-18	0.0	0.4	0.2	0.6
May-18	0.3	0.4	-0.1	0.3
Jun-18	0.7	0.2	0.5	-0.3
Jul-18	1.5	0.0	0.4	1.1
Aug-18	-0.2	0.1	n.a.	0.3

Source: CBS Aruba, Bureau of Labor Statistics (USA), CBS Curaçao and CBS Netherlands

The USA is considered Aruba's largest trading partner². Table 7 provides an overview of the Δ CPI for Aruba and the USA in August 2018. Aruba's monthly Δ CPI for August 2018 is 0.3 ppts lower than the Δ CPI of the USA.

Table 7: Overview of Δ CPI, 2018

Period	Aruba	USA
Monthly Jul - Aug	-0.2	0.1
Year-to-date Dec - Aug	3.9	2.3
Last 12 months ¹ Aug - Aug	5.0	2.7
Last 24 months ² Aug - Aug	1.8	2.4

Source: Central Bureau of Statistics Aruba

¹ End of period inflation

² Period average inflation

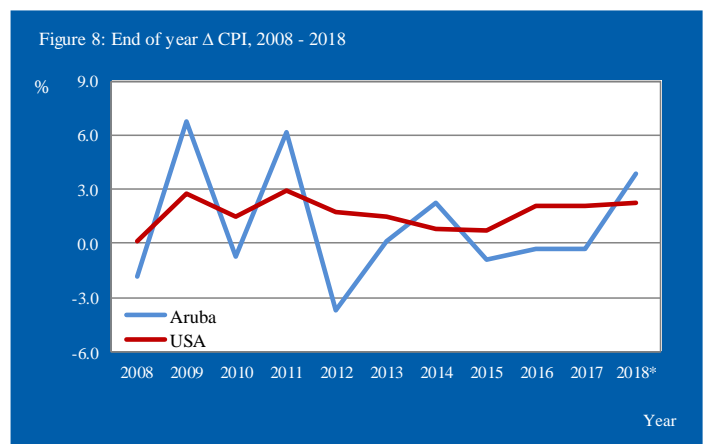
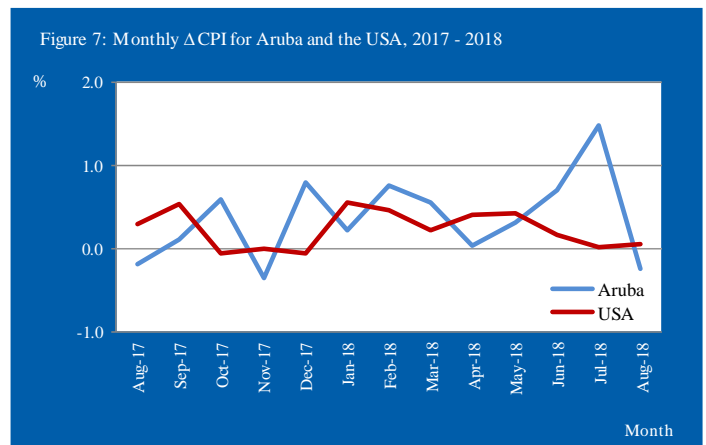
The Δ CPI of Aruba over the last 12 months is 2.3 ppts higher compared to the USA's 12-month Δ CPI. The Δ CPI over the last 24 months for Aruba is 0.6 ppts lower than the Δ CPI of the USA. The monthly inflation for both Aruba and the USA is depicted in figure 7 over a period of one year. Furthermore, an overview of the end of year Δ CPI over the period 2008 - 2018 for Aruba and the USA is provided in table 8 and figure 8.

Table 8: End of year Δ CPI, 2008 - 2018

Period	Aruba	USA
2008	-1.9	0.1
2009	6.8	2.7
2010	-0.7	1.5
2011	6.1	3.0
2012	-3.7	1.7
2013	0.1	1.5
2014	2.2	0.8
2015	-0.9	0.7
2016	-0.3	2.1
2017	-0.3	2.1
2018*	3.9	2.3

Source: Central Bureau of Statistics Aruba

* ytd



*ytd

² "55% of Aruba's import by sea and air originates from the USA" (Source: Foreign Trade Statistics Report, 2nd Quarter 2018).

5 Core inflation

5.1 Core inflation

Core inflation is a measure of inflation which excludes certain items that face volatile price movements e.g. food products and energy. By calculating the core inflation these more volatile components are eliminated from the inflation. Core inflation indices serve to assess the mid- and long-term trend of the overall price level. For the purpose of adjusting monetary policy, many economists focus more intently on the core rate of inflation, as this allows for an in-depth assessment of inflationary processes ongoing in the economy.

5.2 Monthly change of the core inflation

In August 2018 the core inflation (measured over the period August 2017 - 2018) was 1.4%, an increase of 0.9 ppts compared to August 2017. In August 2018 the food index was 4.8%, while the energy index shows an increase of 1.3%. Over the past year the food index increased by 3.9 ppts and the energy index increased by 5.7 ppts. Table 9 provides an overview of the monthly inflation and core inflation starting from August 2017.

Table 9: Monthly inflation¹ and core inflation, 2017 - 2018

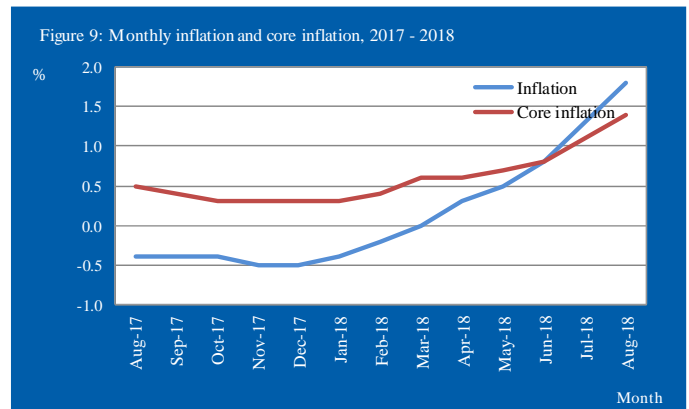
Period	Inflation	Food	Energy ²	Core Inflation
Aug-17	-0.4	0.9	-4.4	0.5
Sep-17	-0.4	1.1	-4.2	0.4
Oct-17	-0.4	1.1	-4.1	0.3
Nov-17	-0.5	0.9	-4.3	0.3
Dec-17	-0.5	0.8	-4.2	0.3
Jan-18	-0.4	0.8	-3.8	0.3
Feb-18	-0.2	1.3	-3.4	0.4
Mar-18	0.0	1.7	-3.1	0.6
Apr-18	0.3	2.2	-2.5	0.6
May-18	0.5	2.7	-1.8	0.7
Jun-18	0.8	3.3	-0.9	0.8
Jul-18	1.3	4.1	0.3	1.1
Aug-18	1.8	4.8	1.3	1.4

Source: Central Bureau of Statistics Aruba

¹ Period average inflation

² Energy : Electricity, water, gasoline and diesel

The monthly inflation and core inflation for Aruba is shown in figure 9 over a period of one year starting from August 2017.



5.3 End of year change of the core inflation, 2013 - 2018

The end of year core inflation of the total population of Aruba for the year 2018 (up to August) is 1.4%, an increase of 1.1 ppts compared to the core inflation of 2017. Table 10 provides an overview of the end of year inflation and core inflation over the period 2013 - 2018.

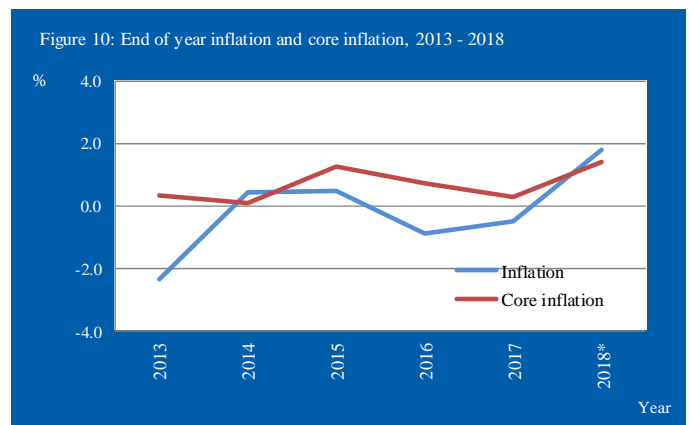
The end of year inflation and core inflation is presented in figure 10 over the period 2013 - 2018.

Table 10: End of year core inflation, 2013 - 2018

Period	2013	2014	2015	2016	2017	2018*
Inflation	-2.4	0.4	0.5	-0.9	-0.5	1.8
Food	0.0	2.2	1.9	-0.1	0.8	4.8
Electricity	-13.3	2.9	8.5	-9.9	-14.0	-5.1
Water	-19.9	0.0	0.0	0.0	0.0	0.0
Gasoline and diesel	-2.5	-2.3	-20.1	-7.9	9.2	12.0
Core inflation	0.3	0.1	1.3	0.7	0.3	1.4

Source: Central Bureau of Statistics Aruba

*current month



*current month

6 Development of Food & catering services

6.1 Monthly change of Food & catering services for August 2018

The “Food & catering services” index showed a decrease of 0.2% in August 2018, after an increase of 2.1% in July 2018. The index for “Food at home” showed a decrease of 0.5% in August, as two (2) of the eleven (11) “Food at home” indices decreased in August 2018. The “Fruit” index registered the largest decrease (-8.0%) in August 2018. Furthermore, a decrease was posted in the index for “Fish and other seafood” (-1.1%). Furthermore, increases of 13.7% and 1.5% were posted in the indices for “Potatoes and other tubers” and “Bread and cereals”.

Table 11 provides an overview of the corresponding weights per food group together with the percentage changes and effect for August 2018.

Table 11: Percentage change of Food for August 2018

Food	Weight	% Change	Effect
Food & catering services	1,492.8	-0.2	-0.042
Food at home	1,125.3	-0.5	-0.072
Bread and cereals	205.2	1.5	0.035
Meat	229.8	0.8	0.023
Fish and other seafood	56.4	-1.1	-0.007
Milk, cheese and eggs	140.0	0.2	0.003
Oils and fats	31.6	0.3	0.002
Fruit	72.0	-8.0	-0.176
Potatoes and other tubers	18.5	13.7	0.027
Vegetables	75.7	0.0	0.000
Sugar, jam, honey and other confectionery	49.6	0.6	0.003
Food products n.e.c.	82.7	0.6	0.006
Non-alcoholic beverages	163.9	0.7	0.013
Food away from home	367.5	0.7	0.030

Source: Central Bureau of Statistics Aruba

Reference is made to table 18 in Appendix 3. Table 18 provides an overview of the monthly and end of period percentage changes and effect for August 2018 for the food groups.

In August 2018, “Food at home” and “Food away from home” as a group showed a decrease in price of 0.2% compared to July 2018, and had an influence of -0.04 pts on the CPI, while the remaining goods and services, as a group, experienced a decrease in price of 0.3%, causing an effect of -0.21 pts on the CPI.

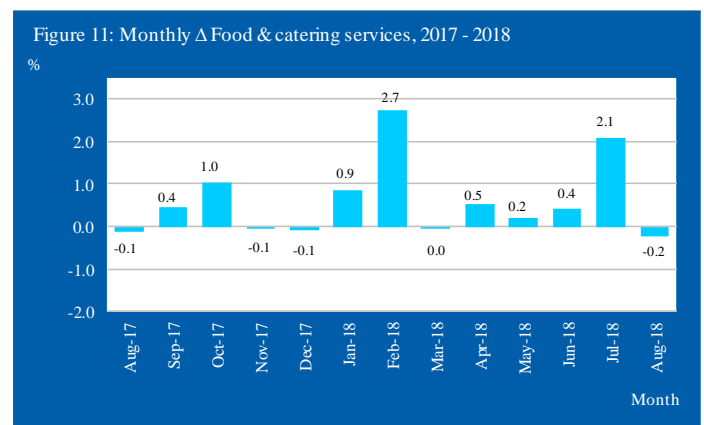
An overview of the percentage change and effect for “Food at home” and “Food away from home” for August 2018 is presented in table 12.

Table 12: Effect on the CPI of August 2018 of “Food at home” and “Food away from home”

Category	Weight	% Change	Effect
Food at home	1,125.3	-0.5	-0.07
Food away from home	367.5	0.7	0.03
Total group	1,492.8	-0.2	-0.04
Remaining goods and services	8,507.2	-0.3	-0.21
CPI	10,000.0	-0.2	-0.25

Source: Central Bureau of Statistics Aruba

Figure 11 depicts the monthly Δ Food and catering services over a period of one year starting from August 2017.



6.2 End of Period change of Food & catering services for August 2018

Over the last twelve (12) months, the “Food & catering services” has increased by 8.2%. The “Food at home” index showed an increase of 9.5%. The “Fruit” index increased by 28.8%, the largest increase among the “Food at home” food groups. The index for “Food away from home” increased by 0.7% in August 2018 and has increased by 3.9% over the last twelve (12) months.

7 Subsistence level

7.1 Subsistence level

The subsistence level is the minimum level of income which is perceived necessary to achieve an adequate standard of living in a given country. The subsistence level is usually determined by estimating the cost of all the essential resources that an average adult consumes in one month or year. This is commonly called a basic needs index, and varies according to the price of food, clothing, housing, transport and other items in the "basket". Equivalence scales are used to adjust for the assumed standard of living, of households of different sizes and composition. The scale assigns a weight of 1.0 for the first adult and 0.5 for each additional adult in the household (aged 15+) and a weight of 0.3 for each child (aged 0-14 years). The subsistence level is based on figures of the report "Bestaansminimum 2010" published by the CBS in December 2010 and is monthly updated for inflation using the monthly CPI. The reference unit used in this report is one of a household consisting of two adults and two children (aged 0-14 years).

7.2 Monthly change of the subsistence level for August 2018

Table 13 provides an overview of the subsistence level for a family of two adults and two children (aged 0-14 years) by sector registered over a period of 5 years for the month August. Over a period of one year the subsistence level increased by Afl.223, from Afl. 4,306 in August 2017 to Afl. 4,529 in August 2018. The "Food and non-alcoholic beverages" sector shows the largest increase (Afl. 150), over this period.

Table 13: Monthly subsistence level in Aruba (in Afl.) by sector for a family of 2 adults and 2 child (aged 0-14 years) for July, 2014 - 2018

Sector	Aug-14	Aug-15	Aug-16	Aug-17	Aug-18	Change in Afl.
						Aug-17 - Aug-18
Food and non-alcoholic beverages	1,543	1,579	1,562	1,580	1,730	150
Clothing and footwear	252	239	246	250	251	1
Housing	1,373	1,438	1,402	1,360	1,371	11
Household operation	131	132	130	130	134	4
Health	68	69	70	70	77	7
Transport	265	250	240	241	266	25
Communications	124	128	129	127	132	5
Recreation and culture	182	178	179	174	187	13
Education	63	64	64	70	70	0
Miscellaneous goods and services	299	306	305	304	310	6
Total	4,301	4,383	4,326	4,306	4,529	223

Source: Central Bureau of Statistics Aruba

An overview of the subsistence level, for the most common family types, over the period August 2017 - August 2018 is presented in table 14.

Table 14: Subsistence level in Aruba (in Afl.) by family size and composition, August 2018 (Base period December 2010)

Period	Equivalence scales				
	1	1.3	1.5	1.8	2.1
	1 adult	1 adult + 1 child	2 adults	2 adults + 1 child	2 adults + 2 children
Aug-17	2,050	2,665	3,075	3,691	4,306
Sep-17	2,054	2,670	3,080	3,696	4,313
Oct-17	2,066	2,686	3,100	3,719	4,339
Nov-17	2,062	2,680	3,093	3,711	4,330
Dec-17	2,067	2,687	3,100	3,720	4,340
Jan-18	2,075	2,697	3,112	3,735	4,357
Feb-18	2,106	2,737	3,159	3,790	4,422
Mar-18	2,112	2,746	3,168	3,802	4,435
Apr-18	2,118	2,753	3,177	3,812	4,447
May-18	2,122	2,759	3,183	3,820	4,457
Jun-18	2,131	2,771	3,197	3,836	4,476
Jul-18	2,162	2,810	3,242	3,891	4,539
Aug-18	2,157	2,804	3,235	3,882	4,529

Source: Central Bureau of Statistics Aruba

7.3 Comparison of the subsistence level and minimum wage

In August 2018 the subsistence level for a single adult household is Afl. 2,157, which represents an income deficit of Afl. 446, an increase of Afl. 107 compared to the deficit observed one year ago (Afl. 339). This deficit is the second highest registered over a period of five years for the month August.

Table 15: Monthly income surplus/deficit (in Afl.) for a single adult household for August, 2014 - 2018

Period	Minimum		Surplus/deficit
	1 adult	wage	
2014	2,048	1,637	-411
2015	2,087	1,637	-450
2016	2,060	1,678	-382
2017	2,050	1,711	-339
2018	2,157	1,711	-446

Source: Central Bureau of Statistics Aruba

Table 16: Monthly & Yearly Changes (%) in the Consumer Price Index for August 2018, Total Population (Dec 2006 = 100)

DESCRIPTION	WEIGHT coefficient	2017 Aug	2017 Dec	2018 Jul	2018 Aug	Monthly Jul - Aug	Ytd Dec - Aug	End of period Aug 17 - Aug 18	Period average Aug 17 - Aug 18
Food and non-alcoholic beverages	1,125.3	147.43	149.57	162.18	161.40	-0.5	7.9	9.5	4.4
Food	961.4	149.25	151.33	165.02	163.93	-0.7	8.3	9.8	4.8
Non-alcoholic beverages	163.9	136.77	139.25	145.52	146.52	0.7	5.2	7.1	2.3
Alcoholic beverages and tobacco	81.9	149.89	150.19	158.72	159.01	0.2	5.9	6.1	2.4
Alcoholic beverages for consumption at home	59.3	124.17	124.69	130.25	130.52	0.2	4.7	5.1	1.6
Tobacco	22.6	217.32	217.04	233.38	233.71	0.1	7.7	7.5	3.8
Clothing and footwear	625.9	91.53	89.70	90.99	92.11	1.2	2.7	0.6	-0.3
Clothing	550.4	93.65	91.54	92.97	94.02	1.1	2.7	0.4	-0.3
Footwear	75.5	76.12	76.26	76.60	78.25	2.1	2.6	2.8	-0.6
Housing	2,553.3	129.91	130.01	130.99	131.05	0.0	0.8	0.9	-0.6
Actual rentals for housing	854.2	154.24	155.13	156.70	156.92	0.1	1.2	1.7	1.7
Maintenance and repair of the dwelling	444.6	110.18	109.09	110.86	110.77	-0.1	1.5	0.5	0.5
Water supply and miscellaneous services relating to the dwelling	505.7	119.95	119.95	120.06	120.06	0.0	0.1	0.1	0.0
Electricity, gas and other fuels	748.8	120.59	120.59	121.00	121.00	0.0	0.3	0.3	-4.9
Household operation	741.3	95.63	96.43	97.91	98.70	0.8	2.4	3.2	-0.3
Furniture, furnishings, carpets and other floor coverings	142.1	53.22	58.76	56.32	56.58	0.5	-3.7	6.3	-0.5
Household textiles	69.5	90.02	88.04	93.44	94.23	0.8	7.0	4.7	-11.5
Household appliances	111.3	65.41	65.38	66.37	68.17	2.7	4.3	4.2	3.4
Glassware, tableware and household utensils	31.8	68.78	66.57	69.56	72.06	3.6	8.3	4.8	0.2
Tools and equipment for house and garden	40.0	70.38	72.79	75.67	78.74	4.1	8.2	11.9	2.1
Goods and services for routine household maintenance and cleaning	346.6	129.24	129.01	131.16	131.43	0.2	1.9	1.7	0.8
Health	235.8	96.18	96.22	105.90	105.83	-0.1	10.0	10.0	3.2
Medical products, appliances and equipment	140.3	102.75	102.98	112.53	112.62	0.1	9.4	9.6	3.7
Out-patient services	57.2	82.85	82.85	96.42	96.42	0.0	16.4	16.4	2.7
Other health products and services	38.3	92.03	91.46	95.81	95.02	-0.8	3.9	3.2	1.6
Transport	1,815.4	111.75	115.94	123.84	123.45	-0.3	6.5	10.5	5.5
Purchase of vehicles	811.4	107.75	107.75	113.57	113.57	0.0	5.4	5.4	2.7
Operation of personal transport equipment	840.1	118.06	123.68	136.27	137.25	0.7	11.0	16.3	8.9
Transport services	163.8	99.24	116.77	110.92	101.70	-8.3	-12.9	2.5	0.1
Communications	706.3	89.71	89.70	93.10	93.06	0.0	3.8	3.7	1.0
Postal services	6.1	118.02	118.02	126.22	126.22	0.0	6.9	6.9	1.2
Telephone and telefax equipment	29.6	34.23	33.87	31.77	30.88	-2.8	-8.8	-9.8	11.5
Telephone and telefax services	670.6	91.90	91.90	95.50	95.50	0.0	3.9	3.9	0.9
Recreation and culture	891.2	106.64	110.00	118.25	114.50	-3.2	4.1	7.4	2.0
Audio-visual, photographic and information processing equipment	123.8	82.68	96.93	105.59	90.75	-14.1	-6.4	9.8	27.8
Other major durables for recreation and culture	19.2	45.81	46.54	50.96	50.96	0.0	9.5	11.2	-1.0
Other recreational items and equipment; gardens and pets	260.1	135.45	134.11	134.98	134.91	-0.1	0.6	-0.4	-3.6
Recreational and cultural services	335.0	101.92	102.39	111.60	112.58	0.9	10.0	10.5	2.7
Newspapers, books and stationery	82.1	88.33	86.74	88.20	97.07	10.1	11.9	9.9	1.7
Holidays	71.0	102.82	124.51	163.35	127.57	-21.9	2.5	24.1	-5.8
Education	83.0	129.16	129.16	130.08	130.08	0.0	0.7	0.7	3.7
Pre primary and primary education	30.4	109.07	109.07	109.07	109.07	0.0	0.0	0.0	0.0
Secondary education	25.2	119.45	119.45	121.90	121.90	0.0	2.0	2.0	0.3
Post-secondary non-tertiary education	4.6	129.44	129.44	129.44	129.44	0.0	0.0	0.0	0.0
Tertiary education	10.4	201.98	201.98	201.98	201.98	0.0	0.0	0.0	17.1
Education not definable by level	12.4	136.91	136.91	138.11	138.11	0.0	0.9	0.9	4.0
Restaurants and hotels	373.7	138.08	139.29	142.39	143.37	0.7	2.9	3.8	2.0
Catering services	367.5	138.74	139.97	143.12	144.11	0.7	3.0	3.9	2.1
Accommodation services	6.2	98.99	99.14	99.54	99.66	0.1	0.5	0.7	0.4
Miscellaneous goods and services	767.0	102.90	102.73	104.67	104.78	0.1	2.0	1.8	0.1
Personal care	262.0	119.08	118.12	119.90	120.01	0.1	1.6	0.8	-0.7
Personal effects n.e.c.	67.3	107.04	110.41	120.81	121.38	0.5	9.9	13.4	5.0
Social protection	28.7	145.84	145.84	145.84	145.84	0.0	0.0	0.0	0.0
Insurance	289.1	85.46	85.46	85.46	85.46	0.0	0.0	0.0	0.0
Financial services n.e.c.	26.9	96.96	96.07	98.77	98.91	0.1	3.0	2.0	-0.8
Other services n.e.c.	93.0	96.96	96.07	98.77	98.91	0.1	3.0	2.0	-0.8
CPI	10,000	116.32	117.63	122.47	122.16	-0.2	3.9	5.0	1.8

Source: Central Bureau of Statistics Aruba

Table 17: Monthly & Yearly Effect on the Consumer Price Index per sector and category for August 2018 (Dec 2006 = 100)

DESCRIPTION	WEIGHT coefficient	Monthly	Ytd	End of period	Period average
		Jul - Aug	Dec - Aug	Aug 17 - Aug 18	Aug 17 - Aug 18
Food and non-alcoholic beverages	1,125.3	-0.07	1.13	1.35	0.63
Food	961.4	-0.09	1.03	1.21	0.59
Non-alcoholic beverages	163.9	0.01	0.10	0.14	0.04
Alcoholic beverages and tobacco	81.9	0.00	0.06	0.06	0.03
Alcoholic beverages for consumption at home	59.3	0.00	0.03	0.03	0.01
Tobacco	22.6	0.00	0.03	0.03	0.02
Clothing and footwear	625.9	0.06	0.13	0.03	-0.02
Clothing	550.4	0.05	0.12	0.02	-0.01
Footwear	75.5	0.01	0.01	0.01	0.00
Housing	2,553.3	0.01	0.22	0.25	-0.18
Actual rentals for housing	854.2	0.02	0.13	0.20	0.19
Maintenance and repair of the dwelling	444.6	0.00	0.06	0.02	0.02
Water supply and miscellaneous services relating to the dwelling	505.7	0.00	0.00	0.00	0.00
Electricity, gas and other fuels	748.8	0.00	0.03	0.03	-0.39
Household operation	741.3	0.05	0.14	0.20	-0.02
Furniture, furnishings, carpets and other floor coverings	142.1	0.00	-0.03	0.04	0.00
Household textiles	69.5	0.00	0.04	0.03	-0.07
Household appliances	111.3	0.02	0.03	0.03	0.02
Glassware, tableware and household utensils	31.8	0.01	0.01	0.01	0.00
Tools and equipment for house and garden	40.0	0.01	0.02	0.03	0.01
Goods and services for routine household maintenance and cleaning	346.6	0.01	0.07	0.07	0.03
Health	235.8	0.00	0.19	0.20	0.06
Medical products, appliances and equipment	140.3	0.00	0.12	0.12	0.05
Out-patient services	57.2	0.00	0.07	0.07	0.01
Other health products and services	38.3	0.00	0.01	0.01	0.00
Transport	1,815.4	-0.06	1.16	1.83	0.95
Purchase of vehicles	811.4	0.00	0.40	0.41	0.20
Operation of personal transport equipment	840.1	0.07	0.97	1.39	0.75
Transport services	163.8	-0.12	-0.21	0.03	0.00
Communications	706.3	0.00	0.20	0.20	0.06
Postal services	6.1	0.00	0.00	0.00	0.00
Telephone and telefax equipment	29.6	0.00	-0.01	-0.01	0.01
Telephone and telefax services	670.6	0.00	0.21	0.21	0.05
Recreation and culture	891.2	-0.27	0.34	0.60	0.16
Audio-visual, photographic and information processing equipment	123.8	-0.15	-0.07	0.09	0.22
Other major durables for recreation and culture	19.2	0.00	0.01	0.01	0.00
Other recreational items and equipment; gardens and pets	260.1	0.00	0.02	-0.01	-0.11
Recreational and cultural services	335.0	0.03	0.29	0.31	0.08
Newspapers, books and stationery	82.1	0.06	0.07	0.06	0.01
Holidays	71.0	-0.21	0.02	0.15	-0.04
Education	83.0	0.00	0.01	0.01	0.03
Pre primary and primary education	30.4	0.00	0.00	0.00	0.00
Secondary education	25.2	0.00	0.01	0.01	0.00
Post-secondary non-tertiary education	4.6	0.00	0.00	0.00	0.00
Tertiary education	10.4	0.00	0.00	0.00	0.03
Education not definable by level	12.4	0.00	0.00	0.00	0.01
Restaurants and hotels	373.7	0.03	0.13	0.17	0.09
Catering services	367.5	0.03	0.13	0.17	0.09
Accommodation services	6.2	0.00	0.00	0.00	0.00
Miscellaneous goods and services	767.0	0.01	0.13	0.12	0.01
Personal care	262.0	0.00	0.04	0.02	-0.02
Personal effects n.e.c.	67.3	0.00	0.06	0.08	0.03
Social protection	28.7	0.00	0.00	0.00	0.00
Insurance	289.1	0.00	0.00	0.00	0.00
Financial services n.e.c.	26.9	0.00	0.01	0.00	0.00
Other services n.e.c.	93.0	0.00	0.02	0.02	-0.01
CPI	10,000	-0.25	3.85	5.02	1.81

Source: Central Bureau of Statistics Aruba

Table 18: Monthly & Yearly Changes (%) and effect in the Food & catering services for August 2018, Total Population (Dec 2006 = 100)

DESCRIPTION	WEIGHT coefficient	% Change		Effect	
		Monthly Jul - Aug	End of period Aug 17 - Aug 18	Monthly Jul - Aug	End of period Aug 17 - Aug 18
Food & catering services	1,492.8	-0.2	8.2	-0.042	1.520
Food at home	1,125.3	-0.5	9.5	-0.072	1.351
Bread and cereals	205.2	1.5	5.2	0.035	0.125
Rice	18.8	1.0	6.6	0.003	0.016
Bread	98.1	2.1	5.8	0.025	0.069
Pasta products	7.6	0.3	2.8	0.000	0.002
Other cereals and cereal products	80.7	0.9	4.3	0.007	0.037
Meat	229.8	0.8	6.1	0.023	0.175
Bovine	44.7	0.7	3.8	0.004	0.020
Swine	28.1	0.3	3.3	0.001	0.011
Poultry	59.5	2.1	8.4	0.017	0.068
Other meat and meat preparations	97.5	0.1	6.3	0.001	0.075
Fish and other seafood	56.4	-1.1	8.5	-0.007	0.054
Fish and seafood preparations	56.4	-1.1	8.5	-0.007	0.054
Milk, cheese and eggs	140.0	0.2	11.3	0.003	0.173
Milk	58.8	-1.6	13.5	-0.013	0.100
Cheese	46.9	2.7	8.5	0.014	0.044
Eggs	14.3	0.7	12.5	0.001	0.014
Other milk products	19.9	0.5	9.0	0.001	0.015
Oils and fats	31.6	0.3	8.9	0.002	0.039
Butter and margarine	9.9	-0.9	15.8	-0.001	0.022
Corn oil	9.4	1.3	5.6	0.002	0.008
Other oils and fats	12.3	0.7	5.6	0.001	0.008
Fruit	72.0	-8.0	28.8	-0.176	0.473
Oranges, lemons and mandarins	11.1	-4.0	15.6	-0.006	0.022
Bananas and plantains	13.8	-3.4	26.7	-0.010	0.063
Apples and pears	11.2	4.3	19.6	0.009	0.036
Grapes	6.0	-11.1	34.1	-0.016	0.035
Melons and watermelons	6.7	-11.8	28.2	-0.056	0.097
Nuts	6.9	1.5	4.0	0.001	0.003
Other fruits and fruit products	16.4	-11.4	37.8	-0.097	0.218
Potatoes and other tubers	18.5	13.7	13.5	0.027	0.028
Potatoes	11.2	19.2	19.3	0.027	0.028
Sweet potatoes and yucca	2.5	-2.8	1.1	0.000	0.000
Other tubers	4.8	1.2	-1.6	0.000	-0.001
Vegetables	75.7	0.0	6.9	0.000	0.083
Lettuce	6.7	18.3	14.3	0.008	0.006
Celery and broccoli	6.3	1.8	18.7	0.003	0.026
Tomatoes & peppers	15.5	5.3	13.8	0.010	0.026
Onions	7.8	-10.0	-4.0	-0.029	-0.012
Frozen vegetable mixtures	6.7	1.9	5.5	0.001	0.004
Other vegetables	12.7	3.9	14.5	0.006	0.020
Other preserved or processed vegetables	20.0	0.5	3.6	0.001	0.011
Sugar, jam, honey and other confectionery	49.6	0.6	4.4	0.003	0.020
Sugar	14.4	1.9	5.8	0.002	0.008
Jams and jellies	2.8	-1.7	0.7	-0.001	0.000
Other confectionery products	32.4	0.3	4.1	0.001	0.013
Food products n.e.c.	82.7	0.6	4.6	0.006	0.045
Other food products	82.7	0.6	4.6	0.006	0.045
Non-alcoholic beverages	163.9	0.7	7.1	0.013	0.137
Coffee and tea	30.1	1.3	6.6	0.004	0.019
Soft and sports drinks	49.7	0.8	10.9	0.005	0.060
Fruit juices	61.0	0.4	5.3	0.004	0.043
Other non-alcoholic beverages	23.1	0.4	5.5	0.001	0.015
Food away from home	367.5	0.7	3.9	0.030	0.170
Food and beverage consumption away from home	367.5	0.7	3.9	0.030	0.170
Other goods and services	8,507.2	-0.3	4.3	-0.206	3.501
Other goods	5,147.2	0.2	4.8	0.085	2.308
Other services	3,360.0	-0.9	3.5	-0.291	1.193
CPI	10,000	-0.2	5.0	-0.249	5.021

Source: Central Bureau of Statistics Aruba

Table 19: CPI: Main indices for August 2018, Total Population (Dec 2006 = 100)

DESCRIPTION	WEIGHT coefficient	2017	2017	2018	2018	Monthly	Ytd	End of period	Period average
		Aug	Dec	Jul	Aug	Jul - Aug	Dec - Aug	Aug 17 - Aug 18	Aug 17 - Aug 18
CPI for "All items"	10,000.0	116.32	117.63	122.47	122.16	-0.2	3.9	5.0	1.8
CPI for "Goods"	6,272.5	114.94	115.99	121.70	121.72	0.0	4.9	5.9	2.0
CPI for "Durable goods"	1,293.2	93.83	95.89	101.20	99.95	-1.2	4.2	6.5	4.8
CPI for "Semi-durable goods"	954.1	90.06	88.49	89.97	91.07	1.2	2.9	1.1	-1.5
CPI for "Non-durable goods"	4,025.2	127.62	128.96	135.81	135.99	0.1	5.4	6.6	1.9
CPI for "Services"	3,727.5	118.65	120.40	123.76	122.91	-0.7	2.1	3.6	1.5
CPI for "Gasoline" and "Diesel"	552.3	113.77	121.34	138.06	139.47	1.0	14.9	22.6	12.0
CPI excluding "Food and non-alcoholic beverages"	8,874.7	112.38	113.58	117.43	117.19	-0.2	3.2	4.3	1.4
CPI excluding "Gasoline" and "Diesel"	9,447.7	116.47	117.41	121.56	121.15	-0.3	3.2	4.0	1.2
CPI excluding "Food and non-alcoholic beverages", "Gasoline" and "Dise"	8,322.4	112.29	113.07	116.06	115.71	-0.3	2.3	3.0	0.7
CPI excluding "Rentals actually paid by tenants or subtenants"	9,145.8	112.78	114.13	119.27	118.92	-0.3	4.2	5.4	1.8
CPI excluding "Housing"	7,446.7	111.67	113.38	119.55	119.12	-0.4	5.1	6.7	2.8
CPI excluding "Gasoline", "Diesel", "Water" and "Electricity"	7,435.0	111.36	112.45	117.53	116.99	-0.5	4.0	5.1	1.9

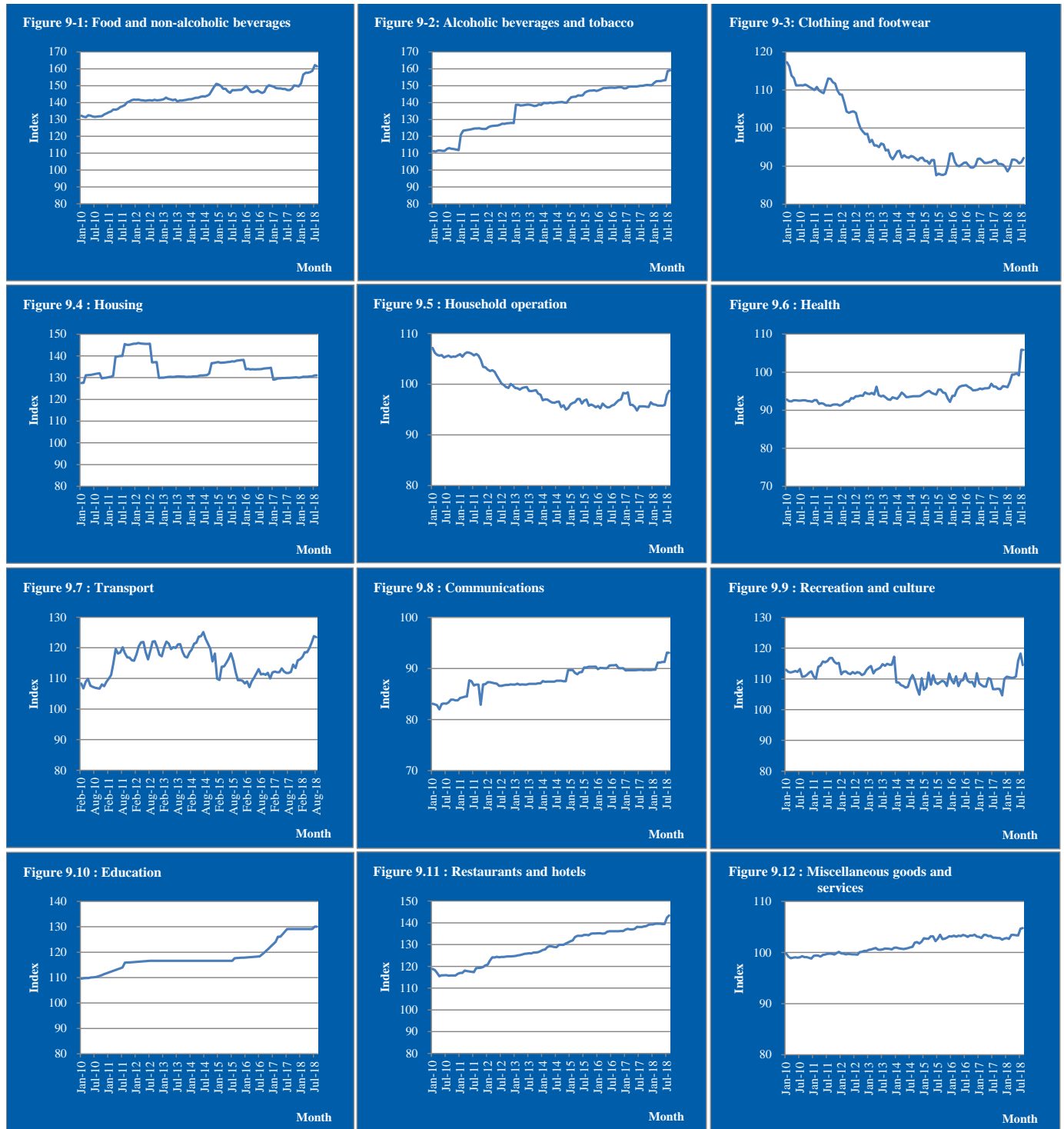
Source: Central Bureau of Statistics Aruba

Table 20: CPI: Effect on main indices for August 2018, Total Population (Dec 2006 = 100)

DESCRIPTION	WEIGHT coefficient	Monthly	Ytd	End of period	Period average
		Jul - Aug	Dec - Aug	Aug 17 - Aug 18	Aug 17 - Aug 18
CPI for "All items"	10,000.0	-0.25	3.85	5.02	1.81
CPI for "Goods"	6,272.5	0.01	3.06	3.66	1.24
CPI for "Durable goods"	1,293.2	-0.13	0.45	0.68	0.50
CPI for "Semi-durable goods"	954.1	0.09	0.21	0.08	-0.11
CPI for "Non-durable goods"	4,025.2	0.06	2.40	2.90	0.86
CPI for "Services"	3,727.5	-0.26	0.79	1.36	0.57
CPI for "Gasoline" and "Diesel"	552.3	0.06	0.85	1.22	0.64
CPI excluding "Food and non-alcoholic beverages"	8,874.7	-0.18	2.72	3.67	1.18
CPI excluding "Gasoline" and "Diesel"	9,447.7	-0.31	3.00	3.80	1.17
CPI excluding "Food and non-alcoholic beverages", "Gasoline" and "Dise"	8,322.4	-0.24	1.87	2.45	0.54
CPI excluding "Rentals actually paid by tenants or subtenants"	9,145.8	-0.26	3.72	4.82	1.62
CPI excluding "Housing"	7,446.7	-0.26	3.63	4.77	1.99
CPI excluding "Gasoline", "Diesel", "Water" and "Electricity"	7,435.0	-0.33	2.87	3.60	1.38

Source: Central Bureau of Statistics Aruba

Course of Indices for 2010 up to August 2018



Glossary

The Consumer Price Index and Inflation

The Consumer Price Index (CPI) measures changes in prices of consumer goods and services by households. Consumer price indices can be intended to measure either the rate of price inflation or deflation as perceived by households or changes in their cost of living. In case of inflation, the percentage change is positive and it indicates a decrease in the purchasing power of the consumers.

Monthly percentage change

Percentage change in price indices of any aggregates of the CPI in relation to the respective price indices of the previous month.

Year-to-date (ytd)

Percentage change in price indices of any aggregates of the CPI in relation to the respective price indices of December prior to the year under review.

End of period inflation (last 12 months)

Percentage change in price indices of any aggregates of the CPI in relation to the respective price indices of the same month of the previous year.

Period average inflation (last 24 months)

The period average inflation is calculated by comparing the annual average CPI of the concerning period with the annual average CPI of the concerning period of the previous year.

Effect

Contribution of all percentage changes (of all respective aggregates) to the CPI.

Core inflation

Core inflation is a measure of inflation that excludes certain items which face volatile price movements. Core inflation eliminates the inflation of certain products that can have temporary price shocks because these shocks can diverge from the overall trend of inflation and give a false measure of inflation. The core rate of inflation is calculated by: total inflation excluding food and energy prices. In part, that is because the core is less volatile and reflects better the relationship of supply and demand in domestic product markets. The core usually is a better measure of the basic rate of inflation that will tend to emerge in the absence of supply shocks.

Food & catering services

The "Food & catering services" index is composed of the indices for the "Food & Non-alcoholic beverages" sector ("Food at home") and the "Catering services" ("Food away from home") category.

Subsistence level

The subsistence level is the minimum level of income which is perceived necessary to achieve an adequate standard of living in a given country. The subsistence level is usually determined by estimating the cost of all the essential resources that an average adult consumes in one month or year. This is commonly called a basic needs index, and varies according to the price of food, clothing, housing, transport and other items in the "basket". The subsistence level is monthly updated for inflation using the monthly CPI.