

Table 1. Total population by age and sex

	End of year			4 <sup>th</sup> Q 2016			Index (2010=100)
	2013	2014	2015	Male	Female	Total	
0-4 yrs.	6,533	6,655	6,710	3,381	3,192	6,573	0.93
5-9 yrs.	7,006	6,965	6,857	3,447	3,289	6,737	-4.35
10-14 yrs.	7,398	7,192	7,145	3,612	3,509	7,121	-5.08
15-19 yrs.	7,572	7,505	7,446	3,695	3,633	7,328	0.34
20-24 yrs.	6,288	6,389	6,612	3,396	3,221	6,616	25.29
25-29 yrs.	5,842	6,038	6,295	3,249	3,184	6,432	17.38
30-34 yrs.	6,606	6,606	6,763	3,173	3,618	6,791	5.97
35-39 yrs.	7,135	7,178	7,332	3,354	3,976	7,330	-1.93
40-44 yrs.	8,399	8,199	7,967	3,529	4,079	7,608	-7.92
45-49 yrs.	8,793	8,634	8,676	4,005	4,762	8,768	-5.15
50-54 yrs.	9,252	9,401	9,382	4,253	4,925	9,178	9.15
55-59 yrs.	7,889	8,155	8,455	4,051	4,668	8,719	26.44
60-64 yrs.	6,186	6,509	6,835	3,203	3,878	7,081	37.87
65-69 yrs.	4,533	4,725	4,999	2,354	2,875	5,229	39.81
70-74 yrs.	3,190	3,291	3,466	1,578	2,075	3,653	24.48
75-79 yrs.	2,310	2,427	2,543	1,087	1,497	2,584	30.76
80-84 yrs.	1,417	1,481	1,524	589	1,013	1,602	46.31
85-89 yrs.	620	674	739	288	494	782	56.94
90-94 yrs.	229	242	246	69	186	255	17.50
95+ yrs.	88	88	96	25	67	91	24.18
<b>Total</b>	<b>107,286</b>	<b>108,355</b>	<b>110,089</b>	<b>52,337</b>	<b>58,140</b>	<b>110,477</b>	<b>8.86</b>

Source: 2010 Census and the Population Registry Office

Graph 1. Population pyramid 2010-2015

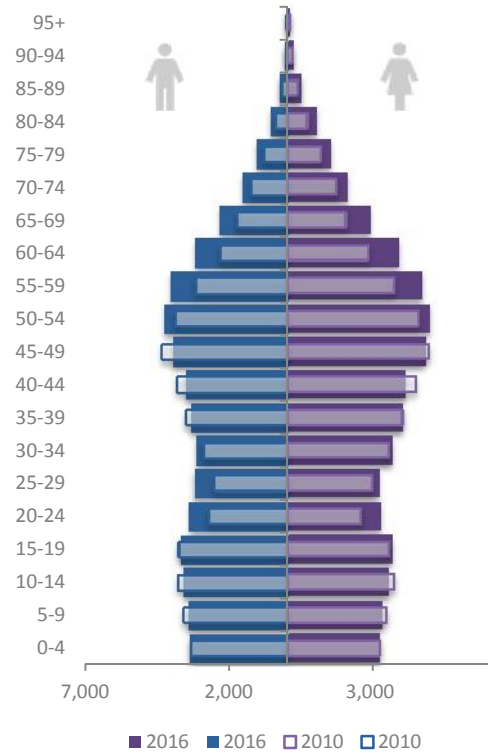


Table 2. Live births by age of mother

	4 <sup>th</sup> Q			End of Year				
	2014*	2015*	2016	2014	2015	2016		
						Male	Female	Total
< 15 yrs.	1	-	-	2	1	-	1	1
15-19 yrs.	37	30	17	131	98	47	42	89
20-24 yrs.	93	94	61	343	306	133	129	262
25-29 yrs.	83	87	90	334	341	179	136	315
30-34 yrs.	82	81	64	350	283	126	125	251
35-39 yrs.	38	41	34	166	164	80	83	163
40-44 yrs.	14	14	12	48	50	25	13	38
45-49 yrs.	1	-	-	2	1	-	2	2
50+ yrs.	-	-	-	-	-	-	-	-
Not reported	-	-	-	-	-	-	-	-
<b>Total</b>	<b>349</b>	<b>347</b>	<b>278</b>	<b>1,376</b>	<b>1,244</b>	<b>590</b>	<b>531</b>	<b>1,121</b>

Source: Population Registry Office

\* Including revision

Table 3. Deaths by age and sex

	4 <sup>th</sup> Q			End of Year				
	2014	2015	2016	2014	2015	2016		
						Male	Female	Total
< 1 yrs.	1	3	1	5	6	3	2	5
1-49 yrs.	8	14	20	43	47	36	29	65
50-59 yrs.	21	25	17	71	84	52	33	85
60-69 yrs.	42	36	25	125	126	79	44	123
70-79 yrs.	57	43	58	176	154	104	101	205
80-89 yrs.	44	51	54	160	191	101	127	228
90+ yrs.	19	22	20	63	71	20	50	70
<b>Total</b>	<b>192</b>	<b>194</b>	<b>195</b>	<b>643</b>	<b>679</b>	<b>395</b>	<b>386</b>	<b>781</b>

Source: Population Registry Office

Graph 2. Deaths by age

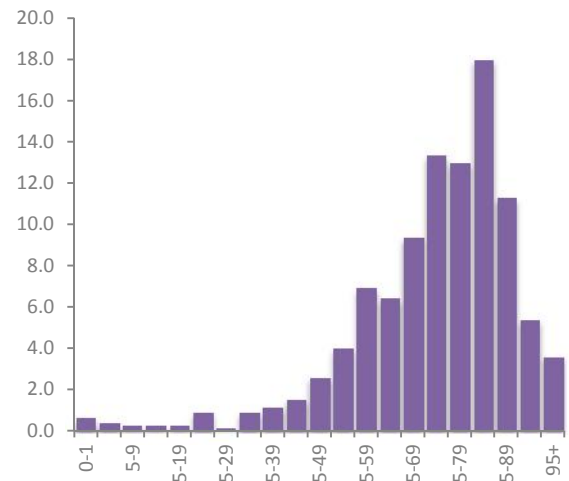


Table 4. Domiciliation by nationality and place of birth

	4 <sup>th</sup> Q			End of Year				
	2014	2015	2016	2014	2015	2016		
						Male	Female	Total
Dutch born in Aruba/N.A.	156	169	175	713	766	378	358	736
Dutch born in the Neth.	95	128	99	543	691	283	300	583
Dutch born elsewhere	57	50	49	223	258	102	111	213
Foreign-born	207	402	147	1,169	1,752	448	515	963
Unknown	10	17	15	35	37	24	25	49
<b>Total</b>	<b>525</b>	<b>766</b>	<b>485</b>	<b>2,683</b>	<b>3,504</b>	<b>1,235</b>	<b>1,309</b>	<b>2,544</b>

Source: Population Registry Office

Table 5. Departures by nationality and place of birth

	4 <sup>th</sup> Q			End of Year				
	2014	2015	2016	2014	2015	2016		
						Male	Female	Total
Dutch born in Aruba/N.A.	205	171	198	1,160	1,077	559	582	1,141
Dutch born in the Neth.	79	55	66	451	511	254	265	519
Dutch born elsewhere	44	45	53	289	283	131	188	319
Foreign-born	85	107	138	447	462	236	281	517
Unknown	-	-	-	-	1	-	-	-
<b>Total</b>	<b>413</b>	<b>378</b>	<b>455</b>	<b>2,347</b>	<b>2,334</b>	<b>1,180</b>	<b>1,316</b>	<b>2,496</b>

Source: Population Registry Office

Including ex officio de-registrations

Table 6. Selected indicators

	Unit	2012	2013	2014	2015	2016
Mid-year population		104,574	106,390	107,839	109,241	110,302
Total Dependency Ratio		44.9	45.1	45.2	45.3	45.7
Child Dependency Ratio (0-14/15-64)		28.7	28.3	27.9	27.4	27.0
Old-age Dependency Ratio (65+/15-64)		16.1	16.7	17.3	18.0	18.7
Index of ageing (60+/0-14)		84.3	88.6	93.3	98.6	104.0
Sex Ratio	p/100	90.0	89.6	89.8	89.8	90.0
Crude Birth rate (CBR)	p/1000	12.3	12.7	12.8	11.4	10.2
Total Fertility Rate (TFR)		2.0	2.0	2.0	1.8	1.6
Age Specific Fertility Rate (15-19 yrs)	p/1000	3.9	3.6	3.5	2.7	2.4
Crude Death rate (CDR)	p/1000	5.7	5.3	6.0	6.2	7.1
Total Emigration		2,175	2,291	2,347	2,334	2,496
Emigration rate	p/1000	20.8	21.5	21.8	21.4	22.6
Total Immigration		3,283	3,335	2,683	3,504	2,544
Immigration rate	p/1000	31.4	31.3	24.9	32.1	23.1
Growth rate population	p/1000	17.2	17.2	9.9	15.9	3.5
Population density	Km <sup>2</sup>	586.0	596.1	602.1	611.7	613.9

Source: 2010 Census and the Population Registry Office

\* Excluding revision on births

Graph 3. Immigration and emigration rates

