





### Highlights April 2013 in Review

#### Consumer Prices:

- Year over year inflation down by 3.5 percent
- Period average inflation at -2.1 percent in April 2013
- Price of gasoline down by Afl. 0.02 per liter in April 2013
- Average price of diesel fell with Afl. 0.10 in April 2013
- WTI crude oil price reached \$92.02 per barrel
- Brent (Europe) crude oil price at \$102.25 per barrel

#### Utilities:

- Total average water distribution up by 3.8 percent
- Average electricity distribution up by 1.6 percent

#### Foreign Trade:

- Import of goods fell with 1.0 percent in April 2013
- Value of export rose by 33.8 percent in April 2013

#### Government:

- Total tax revenue up by 3.5 percent in April 2013
- Taxes on income & profit down by 2.1 percent
- Taxes on commodities fell with 1.3 percent in April 2013
- Taxes on property up by 39.8 percent in April 2013
- Turnover tax (BBO) up by 7.0 percent in April 2013
- Tourist tax rose by 13.1 percent in April 2013

#### Tourism:

- Total stayover visitors down by 2.5 percent in April 2013
- U.S. visitors fell with 0.8 percent in April 2013
- Visitors from Venezuela down by 21.7 percent
- Cruise passengers up by 1.4 percent in April 2013

#### Airport and Passenger Traffic:

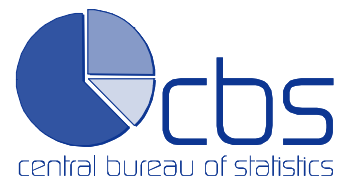
- Commercial landings up by 0.9 percent in April 2013
- Airport visitor arrivals down by 0.8 percent in April 2013

### Monthly Economic Indicators

April 2013	% Change	
	Last Month	Last Year
<b>Consumer prices</b>		
Total index	0.0	-3.5
<b>Utilities</b>		
Water consumption	-7.3	3.8
Electricity distribution	-1.1	1.6
<b>Foreign trade</b>		
Import	-1.8	-1.0
Export	15.1	33.8
<b>Government</b>		
Total tax revenue	4.8	3.5
<b>Tourism</b>		
Total stayover visitors	-15.4	-2.5
USA	-13.9	-0.8
Venezuela	-25.1	-21.7
Colombia	-46.7	-29.6
Netherlands	20.9	0.5
<b>Cruise passenger arrivals</b>	-15.9	1.4
<b>Airport &amp; passenger traffic</b>		
Commercial landings	-5.4	0.9
Arrival visitors	-13.1	-0.8

Source: Central Bureau of Statistics Aruba

L.G. Smith Boulevard 160  
Oranjestad, Aruba  
Phone: +297 5837433  
Fax: +297 5838057  
www.cbs.aw



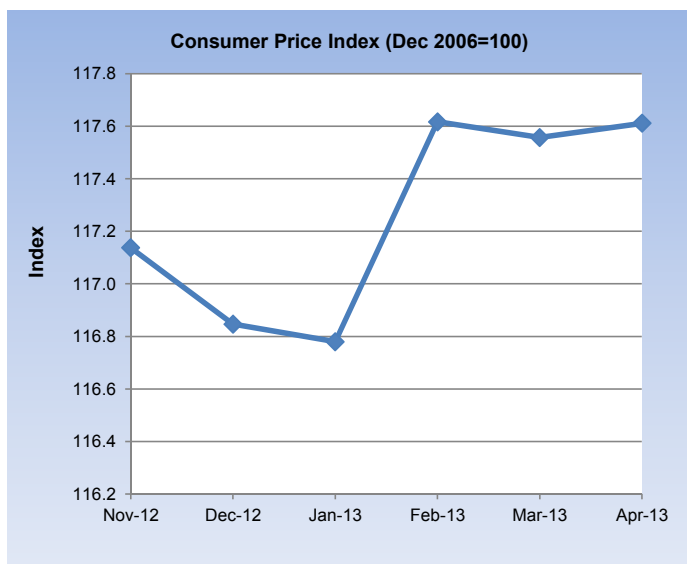
## Table of Contents

■ Consumer Price Index.....	5
■ International aspects.....	6
■ Utilities.....	7
■ Water distribution.....	8
■ Electricity distribution.....	9
■ Foreign Trade.....	10
■ Government Revenues.....	11
■ Tourism.....	12
■ Corresponding Tables	

L.G. Smith Boulevard 160  
Oranjestad, Aruba  
Phone: +297 5837433  
Fax: +297 5838057  
[www.cbs.aw](http://www.cbs.aw)



# 1.1 Consumer Price Index



Month	2010	2011	2012	2013
-------	------	------	------	------

### Consumer price index

January	114.3	114.8	121.0	116.8
February	114.1	115.1	121.5	117.6
March	114.4	115.9	121.8	117.6
April	114.8	118.8	121.9	117.6

### Consumer price index monthly %-change

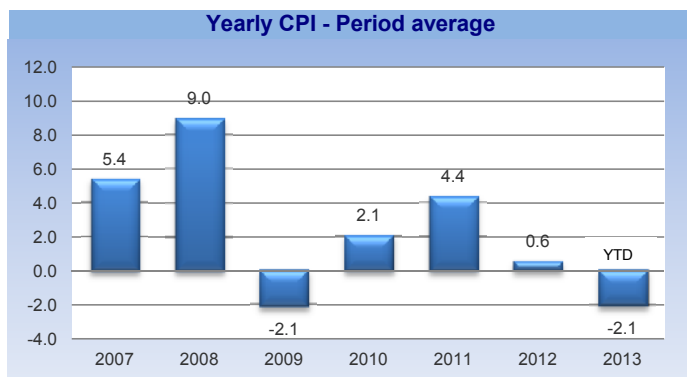
January	-0.8	0.4	-0.3	-0.1
February	-0.1	0.2	0.4	0.7
March	0.3	0.7	0.2	-0.1
April	0.4	2.5	0.1	0.0

### Consumer price index annual %-change

January	6.3	0.5	5.4	-3.5
February	5.4	0.8	5.6	-3.2
March	5.0	1.3	5.1	-3.5
April	5.1	3.5	2.6	-3.5

### Consumer price index period average

January	-1.4	1.6	4.8	-0.2
February	-0.7	1.2	5.2	-0.9
March	-0.1	0.9	5.5	-1.6
April	0.6	0.8	5.4	-2.1



## Key points

In April 2013, the total consumer price index recorded a very slight increase (+0.05%) when compared to the previous month. Increases in average prices were recorded for the sectors Health (+2.2%), Recreation & culture (+1.0%), Household operation (+0.3%), Restaurants & hotels (+0.2%), Miscellaneous goods & services (+0.1%), Clothing & footwear (+0.1%) and Communications (+0.1%). Transport and Food & non-alcoholic beverages, on the other hand, decreased by 0.5 and 0.3 percent respectively, when compared to March 2013. At the end of April 2013, the twelve-month average rate of inflation was at -2.1 percent, down from 5.4 percent recorded at the end of April 2012.

On a yearly basis, consumer prices fell with 3.5 percent in April 2013. Major price decreases were recorded in the following sectors:

- Housing**; Average prices in the Housing sector fell with 10.5 percent compared to April 2012, mainly as a result of decreases in the prices of Electricity, gas & other fuels (-15.3%) and Water supply & misc. services related to dwellings (-27.0%).
- Clothing & footwear**; In April 2013, prices of Clothing & footwear decreased by 8.2 percent compared to April 2012, mainly as a result of decreases in the average prices of Clothing (-8.8%) and Footwear (-3.5%).
- Household operation**; Average prices in the Household operation sector declined by 3.1 percent in April 2013. Lower prices were recorded for Furniture, furnishings, carpets & other floor coverings (-12.3%), Household textiles (-13.9%), Household appliances (-1.5%), Glassware, tableware & household utensils (-4.5%) and Tools & equipment for house & garden (-0.5%).

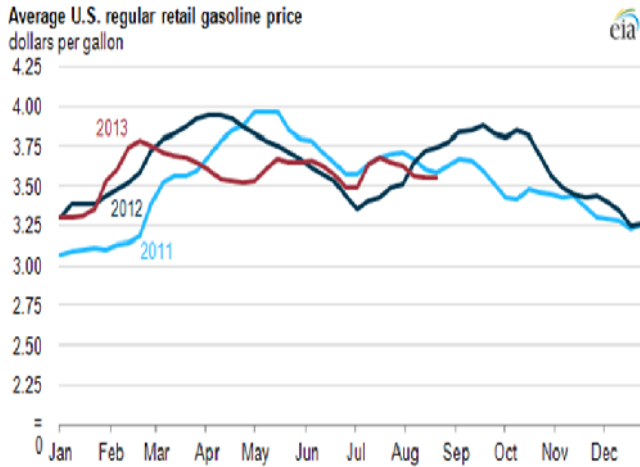
## Related statistics in this bulletin

- 1.2 International aspects
- 2.1 Utilities
- Corresponding tables

## Related statistics publications

- Consumer price index
- Economic profile
- Statistical yearbook

## 1.2 International aspects



Source: U.S. Energy Information Administration, Weekly Retail Gasoline and Diesel Prices

Month	Jan-13	Feb-13	Mar-13	Apr-13
<b>Consumer price index monthly %-change</b>				
United States	0.3	0.8	0.3	-0.1
Netherlands	0.0	0.8	1.1	0.1
Curacao	-0.5	0.9	0.7	0.6
Aruba	-0.1	0.7	-0.1	0.0

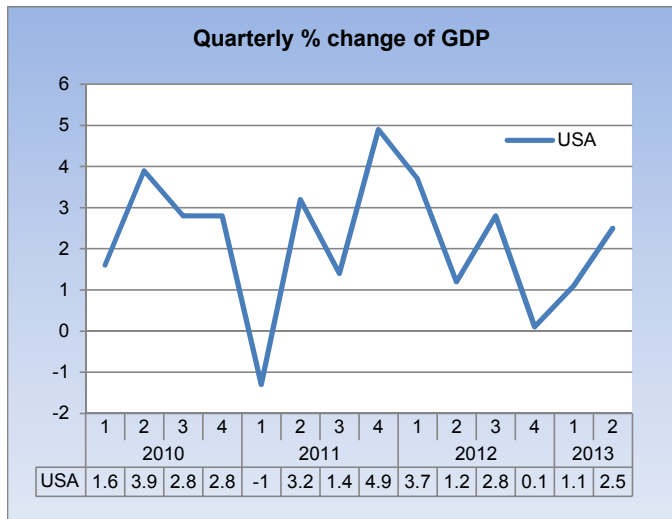
### Gasoline, diesel and world crude oil prices

#### United States

Gasoline (\$/gal)	3.32	3.67	3.71	3.57
Diesel (\$/gal)	3.91	4.11	4.07	3.93
<b>Crude oil (\$/barrel)</b>				
WTI - Cushing, Okl	94.76	95.31	92.94	92.02
Brent, Europe	112.96	116.05	108.47	102.25

### Export price monthly %-change

USA	0.4	0.7	-0.5	-0.6
-----	-----	-----	------	------



\* Non-Resident Air Arrivals

\*\* Non-Resident Hotel registrations only

### Key points

During the month of April 2013, the average WTI crude oil price fell with \$0.92 per barrel compared to the previous month, reaching \$92.02 per barrel. The Brent (Europe) crude oil reached \$102.25 per barrel in April 2013, down from \$108.47 per barrel recorded in March 2013.

Month	Period	Tourists	%-Ch
<b>Latest tourist arrivals 2013</b>			
Anguilla	Jan-Apr	27,888	3.3
Antigua & Barbuda	Jan-Apr	97,418	-4.6
Aruba	Jan-Apr	315,665	4.3
Bahamas	Jan-Mar	355,271	-4.1
Belize	Jan-Apr	116,546	10.0
Barbados	Jan-Apr	192,696	-7.7
Cayman Islands	Jan-Apr	133,218	5.5
Cuba	Jan-Mar	946,706	-0.6
Curacao	Jan-Apr	148,954	6.3
Dominican Republic*	Jan-Apr	1,735,638	-1.1
Jamaica	Jan-Apr	712,204	-3.1
Martinique	Jan-Apr	200,699	0.1
U.S. Virgin Islands	Jan-Mar	223,242	-1.3
St. Maarten	Jan-Mar	149,928	2.3
British Virgin Islands	Jan-Mar	119,069	4.5

### Related statistics in this bulletin

- 1.1 Consumer price index

- 2.1 Utilities

- 5 Tourism

- Corresponding tables

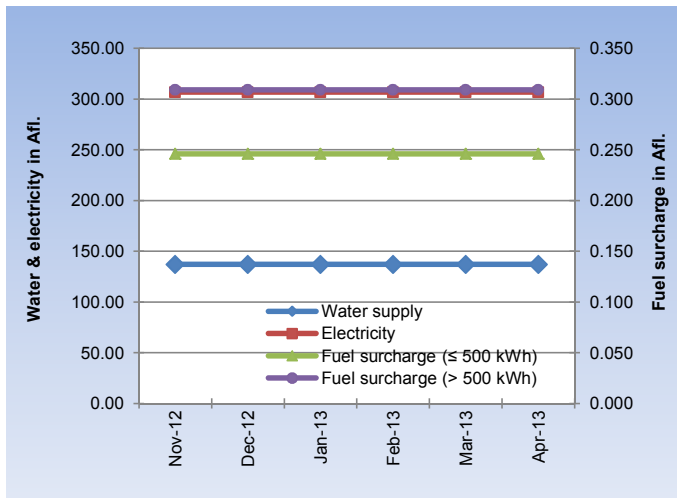
### Related statistics publications

- Consumer price index

- Economic profile

Source: Energy Information Administration, Bureau of labor statistics, Caribbean Tourism Organization

## 2.1 Utilities



Jan-13 Feb-13 Mar-13 Apr-13

### Utility prices in Afl.

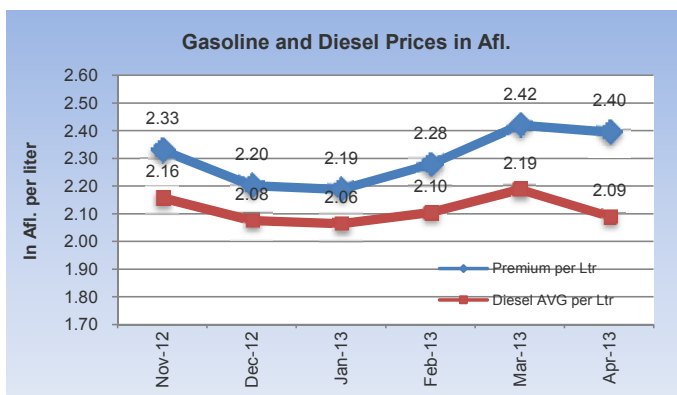
	Jan-13	Feb-13	Mar-13	Apr-13
Electricity	306.75	306.75	306.75	306.75
Gasoline	2.19	2.28	2.42	2.40
Water	137.05	137.05	137.05	137.05
Diesel	2.06	2.10	2.19	2.09
Fuel surcharge (≤ 500kWh)	0.246	0.246	0.246	0.246
Fuel surcharge (> 500kWh)	0.309	0.309	0.309	0.309

### Utility prices monthly %-change

	Jan-13	Feb-13	Mar-13	Apr-13
Electricity	0.0	0.0	0.0	0.0
Gasoline	-0.6	4.1	6.2	-1.0
Water	0.0	0.0	0.0	0.0
Diesel	-0.6	1.9	4.0	-4.5
Fuel surcharge (≤ 500kWh)	0.0	0.0	0.0	0.0
Fuel surcharge (> 500kWh)	0.0	0.0	0.0	0.0

### Utility prices annual %-change

	Jan-13	Feb-13	Mar-13	Apr-13
Electricity	-15.6	-15.6	-15.6	-15.6
Gasoline	-0.3	-0.9	0.0	-5.1
Water	-29.9	-29.9	-29.9	-29.9
Diesel	2.3	0.5	0.6	-4.9
Fuel surcharge (≤ 500kWh)	-24.3	-24.3	-24.3	-24.3
Fuel surcharge (> 500kWh)	-19.7	-19.7	-19.7	-19.7



CPI USA: seasonally unadjusted

<sup>1</sup> Based on an average electricity consumption of 725.5 kWh per month.

<sup>2</sup> Based on an average per household

## Key points

In April 2013, the price of gasoline fell with Afl. 0.02 per liter compared to the previous month, reaching Afl. 2.40 per liter. The average price of diesel dropped by Afl. 0.10 per liter, reaching Afl. 2.09 per liter in April 2013. In April 2013, the average prices per household of water and electricity remained unchanged when compared to the previous month.

### Prices of utilities in Aruba during May 2013

	Price change	Impact on CPI
Electricity <sup>1</sup>	0.0%	0.00
Gasoline (premium)	-3.4%	-0.23
Water <sup>2</sup>	0.0%	0.00
Diesel	-3.5%	-0.01
<b>Total impact</b>		<b>-0.25</b>

Source: Central Bureau of Statistics Aruba

Disregarding any other important fluctuations in prices over the month of May 2013, price movement of gasoline and diesel during the month of May 2013 affects the consumer price index of May 2013 by -0.25.

## Related statistics in this bulletin

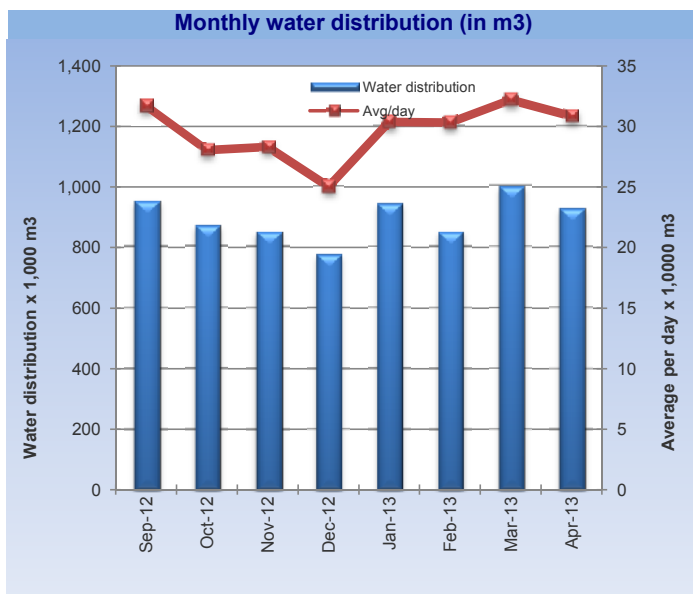
- 2.2 Water and electricity distribution
- Corresponding tables

## Related statistics publications

- Consumer price index
- Economic profile
- Statistical yearbook



## 2.2 Water distribution



Month	2010	2011	2012	2013
-------	------	------	------	------

### Average water distribution (m3)

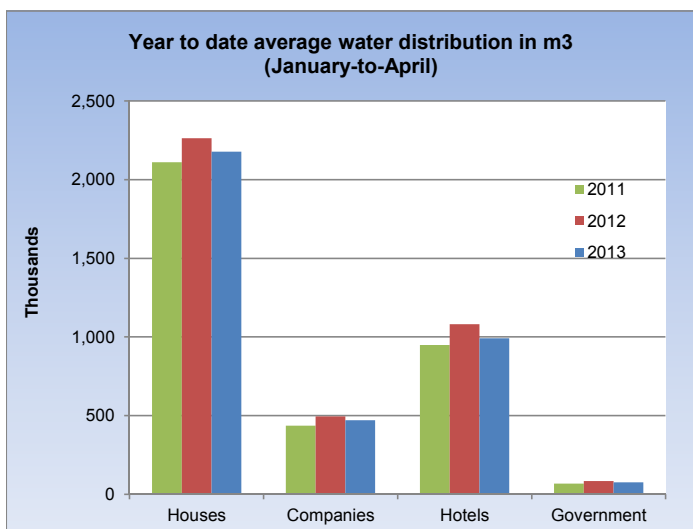
January	928,242	922,259	1,215,572	941,724
February	947,893	759,496	873,430	849,014
March	1,065,728	977,770	942,047	998,435
April	830,704	905,173	891,761	925,734

### Average water distribution monthly %-change

January	-2.2	14.0	49.7	21.4
February	2.1	-17.6	-28.1	-9.8
March	12.4	28.7	7.9	17.6
April	-22.1	-7.4	-5.3	-7.3

### Average water distribution annual %-change

January	-4.0	-0.6	31.8	-22.5
February	14.6	-19.9	15.0	-2.8
March	11.4	-8.3	-3.7	6.0
April	-14.0	9.0	-1.5	3.8



### Key points

During the month of April 2013, the average water distribution in Aruba (houses, companies, hotels, government) increased by 3.8 percent compared to April 2012. With the exception of Government (-10.7%), water usage increases were recorded for the sectors, Houses (+2.9%), Companies (+2.2%) and Hotels (+7.9%).

In the January-to-April period of 2013, the average water distribution declined by 5.3 percent compared to the similar period of 2012.

### Average water distribution (in m<sup>3</sup>)\*

April 2013		% Change since		
		last month	last year	YTD % change
Houses	541,325	-8.5	2.9	-3.8
Companies	115,440	-8.8	2.2	-4.8
Hotels	249,986	-2.4	7.9	-8.3
Government	18,983	-21.9	-10.7	-9.6
<b>Total</b>	<b>925,734</b>	<b>-7.3</b>	<b>3.8</b>	<b>-5.3</b>

Source: WEB Aruba N.V., Central Bureau of Statistics Aruba

\* Calculation of drink water distribution in Aruba (in m3) is based on an average water distribution per month, excluding the distribution to Valero and vessels.

### Related statistics in this bulletin

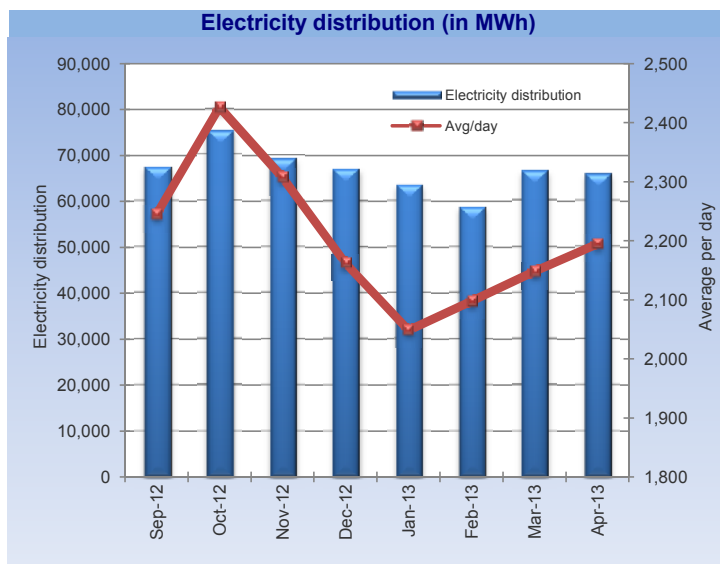
- 2.3 Electricity distribution
- Corresponding tables

### Related statistics publications

- Economic profile
- Statistical yearbook



## 2.3 Electricity distribution



Month	2010	2011	2012	2013
-------	------	------	------	------

### Average electricity distribution (MWh)

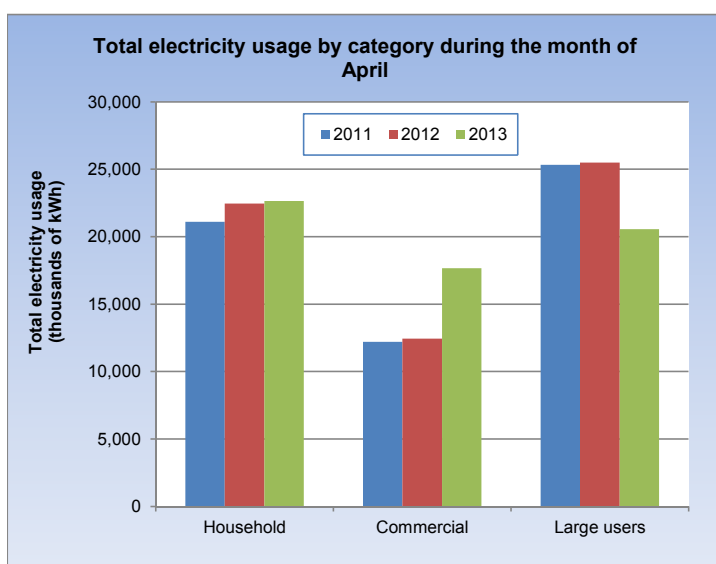
January	67,969	65,652	63,149	63,506
February	61,106	58,966	61,725	58,737
March	71,051	64,484	60,329	66,587
April	69,741	64,463	64,812	65,850

### Average electricity distribution monthly %-change

January	-3.6	-0.3	-3.4	-5.2
February	-10.1	-10.2	-2.3	-7.5
March	16.3	9.4	-2.3	13.4
April	-1.8	0.0	7.4	-1.1

### Average electricity distribution annual %-change

January	5.0	-3.4	-3.8	0.6
February	7.1	-3.5	4.7	-4.8
March	12.7	-9.2	-6.4	10.4
April	6.9	-7.6	0.5	1.6



Source: WEB Aruba N.V., ELMAR N.V.

### Key points

In April 2013, electricity in MWh supplied to Elmar increased by 1.6 percent compared to April 2012, following a 0.5 percent growth recorded during the similar period one year earlier.

The electricity consumption, as reported by the Elmar, rose by 1.9 percent in April 2013, when compared to April 2012. During the January-to-April period of 2013, the total electricity usage rose by 2.1 percent compared to the similar period of 2012.

### Electricity Consumption (MWh)

	Feb-13	Mar-13	Apr-13
Household	16,306	24,781	22,652
Usage per connection	417.6	626.7	572.7
Commercial	17,192	16,948	17,665
Large users	18,976	20,972	20,566
Streetlights	349	348	349
Signage	108	109	111
Churches, schools, etc.	1,081	1,024	1,015
<b>Total</b>	<b>54,011</b>	<b>64,181</b>	<b>62,357</b>

### Electricity Generation (MWh)

Year	Valero	Windpark
2011	1,279	44,997
2012	967	48,670
2013	645	55,536

January-to-April period

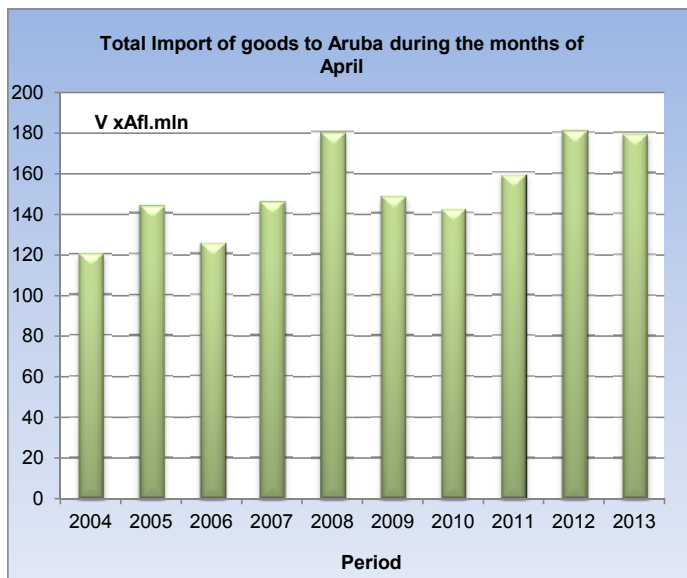
### Related statistics in this bulletin

- 2.2 Water distribution
- Corresponding tables

### Related statistics publications

- Economic profile
- Statistical yearbook

### 3 Foreign trade



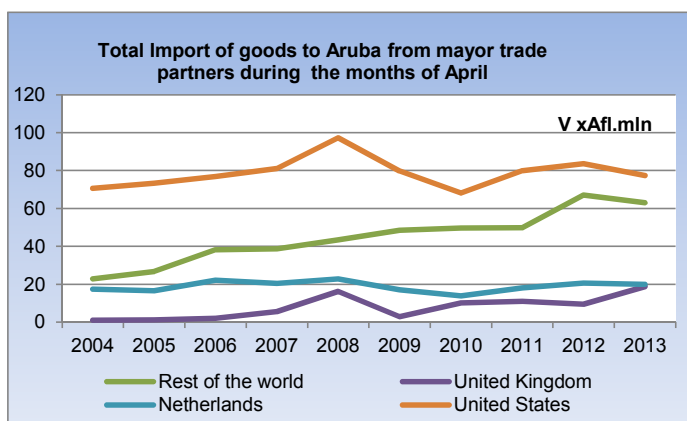
April 2013	Vx1,000 Afl.	Monthly % Ch	Yearly % Ch	YTD % Ch
------------	--------------	--------------	-------------	----------

#### Total import of goods to Aruba by commodity group

1. Agriculture products	64,124	9.3	4.5	9.9
2. Mineral chemical and related products	35,126	0.3	-14.6	-9.7
3. Textiles, pearls and precious stones	15,636	-27.7	4.7	9.1
4. Metal products, machinery and equipment	35,505	-8.2	-3.8	-4.8
5. Other transportable goods	28,877	1.5	8.3	12.8
<b>Total Import</b>	<b>179,268</b>	<b>-1.8</b>	<b>-1.0</b>	<b>2.6</b>

#### Total export of goods from Aruba by commodity group

1. Agriculture products	17,223	0.6	38.9	0.8
2. Mineral chemical and related products	295	127.1	-76.7	155.6
3. Textiles, pearls and precious stones	4,551	426.5	93.1	123.4
4. Metal products, machinery and equipment	1,840	-7.5	11.6	-1.1
5. Other transportable goods	514	-54.2	-10.8	23.2
<b>Total Export</b>	<b>24,424</b>	<b>15.1</b>	<b>33.8</b>	<b>12.9</b>



Source: Customs Aruba, Central Bureau of Statistics Aruba

#### Key points

In April 2013, the total import of merchandise to Aruba declined by 1.0 percent compared to April 2012. With the exception of Agriculture products (+4.5%), Textiles, pearls & precious stones (+4.7%) and Other transportable goods (+8.3%), import decreases were recorded for Mineral, chemical & related products (-14.6%) and Metal products, machinery & equipment (-3.8%).

In the January-to-April period of 2013, the total import of goods to Aruba increased by 2.6 percent compared to the similar period of 2012.

Compared to April 2012, the total exports of goods from Aruba expanded by 33.8 percent in April 2013. With the exception of Mineral, chemical & related products (-76.7%) and Other transportable goods (-10.8%), export increases have been recorded for Agriculture products (+38.9%), Textiles, pearls & precious stones (+93.1%) and Metal products, machinery & equipment (+11.6%).

On a year-to-date basis, total export of goods from Aruba rose by 12.9 percent in April 2013 when compared to the similar period of 2012.

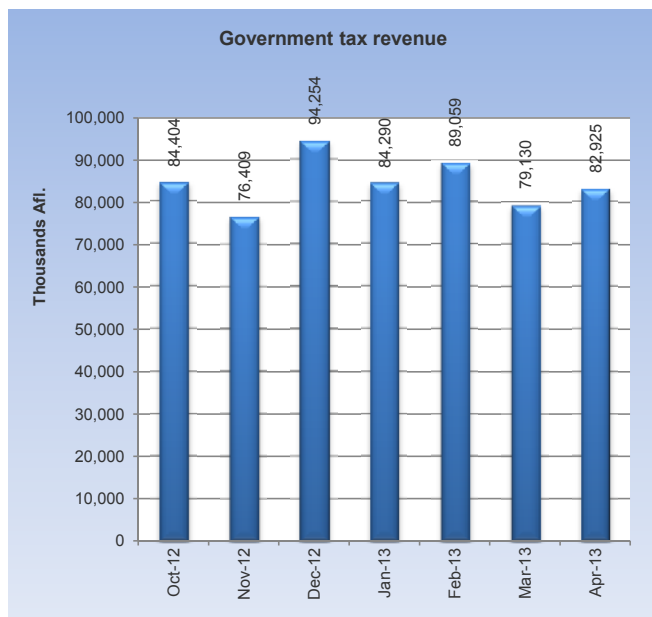
#### Related statistics in this bulletin

- Corresponding tables

#### Related statistics publications

- Foreign Trade Statistics
- Economic profile
- Statistical yearbook

## 4 Government



Month	2010	2011	2012	2013
-------	------	------	------	------

### Total tax revenues (x 1,000 AfL.)

Month	2010	2011	2012	2013
January	71,506	66,540	84,416	84,290
February	63,832	74,952	71,839	89,059
March	64,732	77,583	74,180	79,130
April	59,157	64,161	80,154	82,925

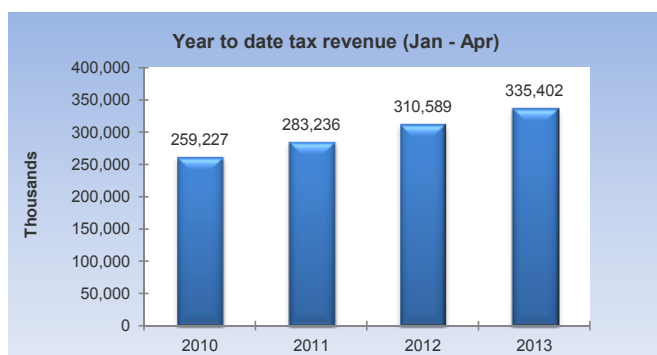
### Total tax revenue monthly %-change

Month	2010	2011	2012	2013
January	-22.5	-20.8	-0.1	-10.6
February	-10.7	12.6	-14.9	5.7
March	1.4	3.5	3.3	-11.1
April	-8.6	-17.3	8.1	4.8

### Total tax revenue annual %-change

Month	2010	2011	2012	2013
January	-14.5	-6.9	26.9	-0.1
February	-16.5	17.4	-4.2	24.0
March	-10.6	19.9	-4.4	6.7
April	-25.0	8.5	24.9	3.5

	Jan-13	Feb-13	Mar-13	Apr-13
<i>(x 1,000 AfL.)</i>				
AOV / AWW	16,731	18,186	18,123	14,971
AZV	22,430	21,016	20,380	17,525
Total Social Contr.	39,160	39,202	38,504	32,496



Source: SIAD

## Key points

In April 2013, the total government tax revenue increased by 3.5 percent compared to April 2012, following a growth of 24.9 percent recorded in the similar period one year earlier. In the January-to-April period of 2013, the total government tax revenue rose by 8.0 percent compared to the previous year, mainly as a result of increases in the Profit tax (+39.6%), Income tax (+183.0%), Import duties (+9.5%), Other & non-tax revenues (+54.4%), Land tax (+62.7%) and Transfer tax (+65.6%).

### Tax Revenues<sup>1</sup>

April 2013	(x1,000 AfL.)	% Change since		
		last month	last year	YTD % change
<b>Taxes on income &amp; profit</b>	<b>34,590</b>	<b>-0.4</b>	<b>-2.1</b>	<b>11.7</b>
Income tax	308	-62.6	140.6	183.0
Wage tax	17,753	-12.3	-18.7	-5.1
Profit tax	16,450	20.7	35.0	39.6
Dividend tax	79	163.3	-93.3	-65.6
<b>Taxes on commodities</b>	<b>23,117</b>	<b>-5.5</b>	<b>-1.3</b>	<b>3.6</b>
Import duties	14,353	6.4	16.0	9.5
Excises on spirits	2,013	9.9	51.8	5.1
Excises on cigarettes	374	-79.9	-76.0	-8.4
Excises on beer	1,268	-51.2	-57.6	-13.2
Excises on gasoline	4,839	8.4	-2.9	-0.8
Other customs	270	25.0	39.2	11.7
<b>Taxes on property</b>	<b>5,960</b>	<b>81.2</b>	<b>39.8</b>	<b>11.0</b>
Long-lease property rights	473	23.5	-78.1	-53.3
Land tax	2,582	172.9	311.1	62.7
Transfer tax	2,402	242.7	138.1	65.6
Succession tax	2	-88.2	-81.8	-86.0
Motor vehicle tax	501	-59.7	8.9	1.3
<b>Taxes on services</b>	<b>2,473</b>	<b>31.7</b>	<b>11.6</b>	<b>8.4</b>
Gambling licenses	2,347	34.5	9.6	6.0
Stamp duties	126	-5.3	70.3	115.2
<b>Turnover tax (BBO)</b>	<b>7,934</b>	<b>13.7</b>	<b>7.0</b>	<b>-0.6</b>
<b>Tourist tax</b>	<b>6,968</b>	<b>26.3</b>	<b>13.1</b>	<b>0.0</b>
<b>Other tax &amp; nontax rev</b>	<b>1,883</b>	<b>-17.4</b>	<b>39.5</b>	<b>54.4</b>
<b>Total tax revenue</b>	<b>82,925</b>	<b>4.8</b>	<b>3.5</b>	<b>8.0</b>

Source: Tax Collector's Office

<sup>1</sup> Excluding AZV and AOV / AWW.

### Related statistics in this bulletin

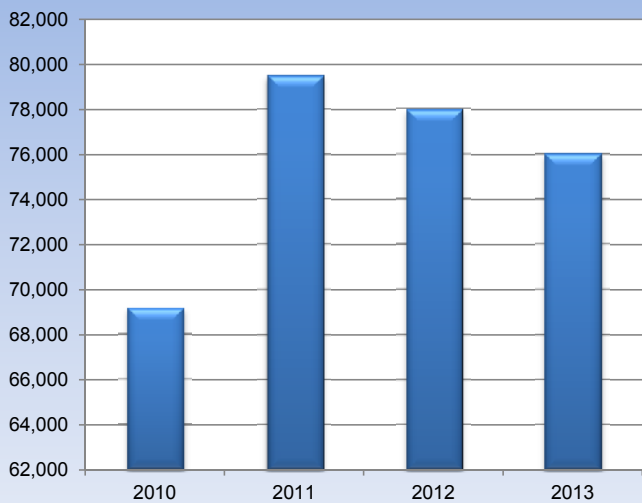
- Corresponding tables

### Related statistics publications

- Economic profile
- Statistical yearbook

## 5 Tourism

Stay-over visitors to Aruba during the month of April



Month	2010	2011	2012	2013
-------	------	------	------	------

### Total stay-over visitors

January	71,240	74,554	71,639	75,751
February	67,672	68,679	72,381	74,049
March	77,204	76,862	80,630	89,844
April	69,157	79,495	77,984	76,021

### Stay-over visitors monthly %-change

January	-6.1	-4.0	-11.7	-15.9
February	-5.0	-7.9	1.0	-2.2
March	14.1	11.9	11.4	21.3
April	-10.4	3.4	-3.3	-15.4

### Stay-over visitors annual %-change

January	2.9	4.7	-3.9	5.7
February	0.8	1.5	5.4	2.3
March	14.5	-0.4	4.9	11.4
April	-3.4	14.9	-1.9	-2.5

	Jan-13	Feb-13	Mar-13	Apr-13
--	--------	--------	--------	--------

### Airport arrivals

Resident	8,841	4,795	6,484	8,728
Non-resident	78,533	74,361	89,958	78,196

### Landings

Commercial landings	1,299	1,214	1,447	1,369
Non-Commercial landings	573	356	563	318

### Cruise Tourism

Cruise passengers	118,542	88,888	84,229	70,808
-------------------	---------	--------	--------	--------

### Tourism

April 2013		% Change since		
		last month	last year	YTD % change
<b>Total stay over visitors</b>	<b>76,021</b>	<b>-15.4</b>	<b>-2.5</b>	<b>4.3</b>
USA	48,493	-13.9	-0.8	1.4
Canada	4,126	-32.5	14.5	-0.7
Venezuela	9,976	-25.1	-21.7	18.9
Colombia	876	-46.7	-29.6	-0.7
Brazil	1,544	70.2	8.4	-5.1
Argentina	1,089	-5.7	26.5	34.3
Netherlands	3,336	20.9	0.5	-10.3
Curacao	1,775	2.0	7.1	0.0
Other	4,806	-18.7	13.7	23.7

Source: Aruba Tourism Authority

### Key points

In April 2013, the total number of stay-over visitors to Aruba fell with 2.5 percent compared to April 2012, following a 1.9 percent drop recorded in the similar period one year earlier. The main decreases were recorded for the visitors from Venezuela (-21.7%), USA (-0.8%) and Colombia (-29.6%). On the other hand, increases were recorded for visitors from Canada (+14.5%), Argentina (+26.5%), Chile (+112.7%) and Suriname (+26.4%).

### Year to date

In the January-to-April period of 2013, the total number of visitors to Aruba is running 4.3 percent higher than the level recorded during the similar period of 2012. On a year to date basis, the number of cruise passengers rose by 5.5 percent in April 2013, when compared to the similar period of 2012.

The share of the US market, which is the largest market, fell from 63.9 percent in April 2012 to 62.1 percent in April 2013. The Venezuelan market, the second largest market, recorded a market share of 13.4 percent in April 2013, up from 11.7 percent recorded in April 2012.

### Related statistics in this bulletin

- Corresponding tables

### Related statistics publications

- Tourist profile
- Economic profile
- Statistical yearbook

## Consumer Price Index

(Dec 2006=100)	Mar '12	Apr '12	Mar '13	Apr '13	YTD <sup>1</sup> 2012	YTD 2013	Monthly % change	Yearly % change
Sector	in %							
Food & non-alcoholic beverages	141.5	141.4	142.2	141.8	-0.3	0.1	-0.3	0.3
Alcoholic beverages & tobacco	126.2	126.3	138.3	138.3	1.5	8.2	0.0	9.5
Clothing & footwear	104.3	104.0	95.4	95.5	-4.4	-3.1	0.1	-8.2
Housing	145.7	145.6	130.3	130.4	0.0	0.3	0.0	-10.5
Household operation	102.8	102.4	98.9	99.3	-0.8	-0.5	0.3	-3.1
Health	92.3	92.3	94.1	96.2	1.2	2.0	2.2	4.3
Transport	120.4	121.8	122.0	121.4	5.1	3.1	-0.5	-0.3
Communications	87.2	87.1	86.8	86.9	0.2	0.0	0.1	-0.3
Recreation & culture	112.5	111.8	111.8	112.9	-2.9	0.0	1.0	1.0
Education	116.3	116.4	116.6	116.6	0.2	0.0	0.0	0.2
Restaurants & hotels	124.1	124.1	125.2	125.5	3.0	0.6	0.2	1.1
Miscellaneous goods & services	99.6	99.7	100.8	100.9	-0.4	0.6	0.1	1.2
<b>Total Index</b>	<b>121.8</b>	<b>121.9</b>	<b>117.6</b>	<b>117.6</b>	<b>0.4</b>	<b>0.7</b>	<b>0.0</b>	<b>-3.5</b>
Fuel Surcharge per kWh in Afl. (≤ 500 kWh)	0.32	0.32	0.25	0.25	0.0	0.0	0.0	-24.3
Fuel Surcharge per kWh in Afl. (> 500 kWh)	0.38	0.38	0.31	0.31	0.0	0.0	0.0	-19.7
Electricity (in Afl.) <sup>2</sup>	363.27	363.27	306.75	306.75	0.0	0.0	0.0	-15.6
Aruba Gasoline (in Afl. per ltr)	2.42	2.52	2.42	2.40	15.2	8.8	-1.0	-5.1
Water (in Afl.) <sup>3</sup>	195.47	195.47	137.05	137.05	0.0	0.0	0.0	-29.9
Aruba Diesel (in Afl. per ltr)	2.17	2.20	2.19	2.09	4.6	0.7	-4.5	-4.9
US Gasoline (in \$ per ltr)	1.02	1.03	0.98	0.94	19.4	7.9	-3.8	-8.5
US Diesel (in \$ per ltr)	1.09	1.09	1.07	1.04	6.6	-0.8	-3.4	-4.5
<b>Crude Oil (in \$ per barrel)<sup>4</sup></b>								
WTI - Cushing, Oklahoma	106.16	103.32	92.94	92.02	4.8	4.7	-1.0	-10.9
Brent, Europe	125.45	119.75	108.47	102.25	11.0	-6.6	-5.7	-14.6

## Utilities

	Mar '12	Apr '12	Mar '13	Apr '13	YTD <sup>1</sup> 2012	YTD 2013	Monthly % change	Yearly % change
<b>Electricity supplied to Elmar for distribution (in MWh)</b>								
Total average	60,329	64,812	66,587	65,850	250,016	254,680	-1.1	1.6
<b>Water consumption (in m3)</b>								
Houses	542,710	525,852	591,417	541,325	2,264,325	2,178,126	-8.5	2.9
Companies	120,756	112,978	126,585	115,440	494,331	470,677	-8.8	2.2
Hotels	253,478	231,680	256,140	249,986	1,081,238	991,116	-2.4	7.9
Government	25,103	21,251	24,293	18,983	82,916	74,989	-21.9	-10.7
<b>Total average</b>	<b>942,047</b>	<b>891,761</b>	<b>998,435</b>	<b>925,734</b>	<b>3,922,809</b>	<b>3,714,907</b>	<b>-7.3</b>	<b>3.8</b>

<sup>1)</sup> YTD (Year to date) refers to the period of January 1st of the current year to the month under review.

<sup>2)</sup> Based on an average use of 725.5 kWh

<sup>3)</sup> Based on an average per household

<sup>4)</sup> Unweighted average of daily closing spot prices

## Foreign Trade in Merchandise (\*1,000 Afl.)

	Mar '12	Apr '12	Mar '13	Apr '13	YTD <sup>1</sup> 2012	YTD 2013	Monthly % change	Yearly % change
<b>Imports of goods by commodity group</b>								
Agriculture products	50,306	61,365	58,662	64,124	227,997	250,673	9.3	4.5
Mineral chemical and related products	39,842	41,152	35,031	35,126	154,213	139,308	0.3	-14.6
Textiles, pearls and precious stones	19,472	14,934	21,621	15,636	71,817	78,361	-27.7	4.7
Metal products, machinery and equipment	44,371	36,910	38,697	35,505	163,745	155,828	-8.2	-3.8
Other transportable goods	24,310	26,664	28,454	28,877	98,066	110,615	1.5	8.3
<b>Total Import</b>	<b>178,301</b>	<b>181,025</b>	<b>182,464</b>	<b>179,268</b>	<b>715,839</b>	<b>734,785</b>	<b>-1.8</b>	<b>-1.0</b>
<b>Exports of goods by commodity group</b>								
Agriculture products	18,686	12,404	17,117	17,223	64,854	65,340	0.6	38.9
Mineral chemical and related products	665	1,267	130	295	2,730	6,977	127.1	-76.7
Textiles, pearls and precious stones	1,407	2,357	864	4,551	4,569	10,209	426.5	93.1
Metal products, machinery and equipment	3,203	1,648	1,988	1,840	10,246	10,131	-7.5	11.6
Other transportable goods	1,017	577	1,124	514	3,458	4,261	-54.2	-10.8
<b>Total Export</b>	<b>24,979</b>	<b>18,253</b>	<b>21,224</b>	<b>24,424</b>	<b>85,857</b>	<b>96,917</b>	<b>15.1</b>	<b>33.8</b>

## Government Revenues (\*1,000 Afl.)

	Mar '12	Apr '12	Mar '13	Apr '13	YTD <sup>1</sup> 2012	YTD 2013	Monthly change	Yearly change
<b>Taxes on income and profit</b>								
Income tax	-788	128	824	308	-2,733	2,269	-62.6	140.6
Wage tax	18,089	21,823	20,242	17,753	83,662	79,424	-12.3	-18.7
Profit tax	9,884	12,189	13,630	16,450	40,813	56,974	20.7	35.0
Dividend tax	1,812	1,183	30	79	3,489	1,200	163.3	-93.3
<b>Taxes on commodities</b>	<b>22,775</b>	<b>23,425</b>	<b>24,462</b>	<b>23,117</b>	<b>85,921</b>	<b>89,013</b>	<b>-5.5</b>	<b>-1.3</b>
Import duties	12,965	12,372	13,493	14,353	46,475	50,887	6.4	16.0
Excises on spirits	1,822	1,326	1,832	2,013	5,824	6,122	9.9	51.8
Excises on cigarettes	1,176	1,559	1,859	374	4,367	4,002	-79.9	-76.0
Excises on beer	1,938	2,989	2,598	1,268	9,111	7,908	-51.2	-57.6
Excises on gasoline, diesel, kerosene	4,580	4,985	4,464	4,839	19,263	19,110	8.4	-2.9
Other customs	294	194	216	270	881	984	25.0	39.2
<b>Taxes on property</b>	<b>4,792</b>	<b>4,264</b>	<b>3,289</b>	<b>5,960</b>	<b>26,812</b>	<b>29,773</b>	<b>81.2</b>	<b>39.8</b>
Long-lease property rights (erfpachtsrechten)	1,397	2,156	383	473	4,739	2,213	23.5	-78.1
Land tax	1,477	628	946	2,582	5,249	8,539	172.9	311.1
Transfer tax	590	1,009	701	2,402	3,616	5,988	242.7	138.1
Succession tax	198	11	17	2	393	55	-88.2	-81.8
Motor vehicle tax (incl. numberplates)	1,130	460	1,242	501	12,815	12,978	-59.7	8.9
<b>Taxes on services</b>	<b>2,535</b>	<b>2,215</b>	<b>1,878</b>	<b>2,473</b>	<b>10,064</b>	<b>10,914</b>	<b>31.7</b>	<b>11.6</b>
Lodging tax	0	0	0	0	9	0		
Gambling licenses	2,484	2,141	1,745	2,347	9,818	10,404	34.5	9.6
Stamp duties	51	74	133	126	237	510	-5.3	70.3
<b>Turnover tax (BBO)</b>	<b>6,761</b>	<b>7,414</b>	<b>6,975</b>	<b>7,934</b>	<b>30,657</b>	<b>30,480</b>	<b>13.7</b>	<b>7.0</b>
<b>Tourist tax</b>	<b>6,887</b>	<b>6,163</b>	<b>5,519</b>	<b>6,968</b>	<b>25,566</b>	<b>25,567</b>	<b>26.3</b>	<b>13.1</b>
<b>Other tax and nontax revenues</b>	<b>1,433</b>	<b>1,350</b>	<b>2,281</b>	<b>1,883</b>	<b>6,338</b>	<b>9,788</b>	<b>-17.4</b>	<b>39.5</b>
<b>Total tax revenues<sup>2</sup></b>	<b>74,180</b>	<b>80,154</b>	<b>79,130</b>	<b>82,925</b>	<b>310,589</b>	<b>335,402</b>	<b>4.8</b>	<b>3.5</b>

<sup>1)</sup> YTD (Year to date) refers to the period of January 1st of the current year to the month under review. This period is compared to the same period of the previous year.

<sup>2)</sup> AZV and AOV/AWW are not included.

## Tourism

	Mar '12	Apr '12	Mar '13	Apr '13	YTD <sup>1</sup> 2012	YTD 2013	Monthly % change	Yearly % change
<b>Total stay over visitors</b>	<b>80,630</b>	<b>77,984</b>	<b>89,844</b>	<b>76,021</b>	<b>302,634</b>	<b>315,665</b>	<b>-15.4</b>	<b>-2.5</b>
USA	52,768	48,899	56,290	48,493	193,308	195,963	-13.9	-0.8
Canada	6,611	3,602	6,117	4,126	21,102	20,956	-32.5	14.5
Venezuela	8,543	12,748	13,319	9,976	35,461	42,150	-25.1	-21.7
Colombia	1,258	1,245	1,643	876	4,624	4,590	-46.7	-29.6
Brazil	1,283	1,425	907	1,544	6,840	6,488	70.2	8.4
Argentina	709	861	1,155	1,089	4,287	5,759	-5.7	26.5
Netherlands	3,204	3,320	2,760	3,336	13,725	12,311	20.9	0.5
Curacao	1,754	1,658	1,740	1,775	5,758	5,756	2.0	7.1
Bonaire	333	424	401	375	1,191	1,187	-6.5	-11.6
Other	4,167	3,802	5,512	4,431	16,338	20,505	-19.6	16.5
<b>Airport Traffic</b>								
<b>Total landings</b>	<b>1,716</b>	<b>1,972</b>	<b>2,010</b>	<b>1,687</b>	<b>6,999</b>	<b>7,139</b>	<b>-16.1</b>	<b>-14.5</b>
Commercial landings	1,338	1,357	1,447	1,369	5,131	5,329	-5.4	0.9
Non-commercial landings	378	615	563	318	1,868	1,810	-43.5	-48.3
<b>Passenger Traffic</b>								
<b>Total arrivals</b>	<b>87,612</b>	<b>86,420</b>	<b>96,442</b>	<b>86,924</b>	<b>338,191</b>	<b>349,896</b>	<b>-9.9</b>	<b>0.6</b>
Arrival locals	5,576	7,555	6,484	8,728	27,671	28,848	34.6	15.5
Arrival visitors	82,036	78,865	89,958	78,196	310,520	321,048	-13.1	-0.8

## Cruise tourism

	Mar '12	Apr '12	Mar '13	Apr '13	YTD <sup>1</sup> 2012	YTD 2013	Monthly % change	Yearly % change
Cruise passengers	84,628	69,852	84,229	70,808	343,631	362,467	-15.9	1.4
Cruise calls	43	33	44	34	170	185	-22.7	3.0
Crew members	34,527	28,012	34,065	29,138	137,081	145,875	-14.5	4.0

<sup>1)</sup> YTD (Year to date) refers to the period of January 1st of the current year to the month under review. This period is compared to the same period of the previous year.