



Highlights December 2012 in Review

Consumer Prices:

- Year over year inflation down by 3.7 percent
- Period average inflation at 0.6 percent in December 2012
- Price of gasoline down by Afl. 0.13 per liter in December 2012
- Average price of diesel down by Afl. 0.08 in December 2012
- WTI crude oil price reached \$87.86 per barrel
- Brent (Europe) crude oil price at \$109.49 per barrel

Utilities:

- Total average water distribution down by 4.5 percent
- Average electricity distribution up by 2.5 percent

Foreign Trade:

- Import of goods up by 6.2 percent in December 2012
- Value of export down by 5.5 percent in December 2012

Government:

- Total tax revenue up by 11.5 percent in December 2012
- Taxes on income & profit up by 35.1 percent
- Taxes on commodities down by 7.8 percent in December 2012
- Taxes on property down 0.8 percent in December 2012
- Turnover tax (BBO) fell with 0.5 percent in December 2012
- Tourist tax up by 10.2 percent in December 2012

Tourism:

- Total stayover visitors up by 11.1 percent in December 2012
- U.S. visitors rose by 4.4 percent in December 2012
- Visitors from Venezuela up by 30.8 percent in December 2012
- Cruise passengers down by 6.5 percent in December 2012

Airport and Passenger Traffic:

- Commercial landings up by 16.2 percent in December 2012
- Airport visitor arrivals up by 11.4 percent in December 2012

Monthly Economic Indicators

December 2012	% Change	
	Last Month	Last Year
Consumer prices		
Total index	-0.2	-3.7
Utilities		
Water consumption	-8.6	-4.5
Electricity distribution	-3.2	2.5
Foreign trade		
Import	-4.2	6.2
Export	-34.6	-5.5
Government		
Total tax revenue	23.4	11.5
Tourism		
Total stayover visitors	23.0	11.1
USA	8.5	4.4
Venezuela	81.7	30.8
Colombia	19.3	2.6
Netherlands	-5.0	-4.9
Cruise passenger arrivals	41.9	-6.5
Airport & passenger traffic		
Commercial landings	12.1	16.2
Arrival visitors	24.8	11.4

Source: Central Bureau of Statistics Aruba

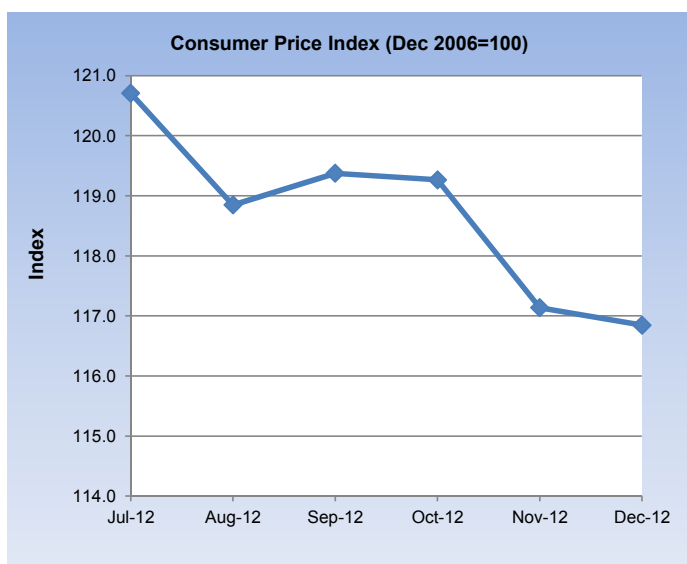
L.G. Smith Boulevard 160
Oranjestad, Aruba
Phone: +297 5837433
Fax: +297 5838057
www.cbs.aw

Table of Contents

■ Consumer Price Index.....	5
■ International aspects.....	6
■ Utilities.....	7
■ Water distribution.....	8
■ Electricity distribution.....	9
■ Foreign Trade.....	10
■ Government Revenues.....	11
■ Tourism.....	12
■ Corresponding Tables	



1.1 Consumer Price Index



Month	2009	2010	2011	2012
-------	------	------	------	------

Consumer price index

September	115.0	114.5	121.9	119.4
October	114.6	113.9	121.3	119.3
November	114.9	114.3	121.4	117.1
December	115.2	114.4	121.4	116.8

Consumer price index monthly %-change

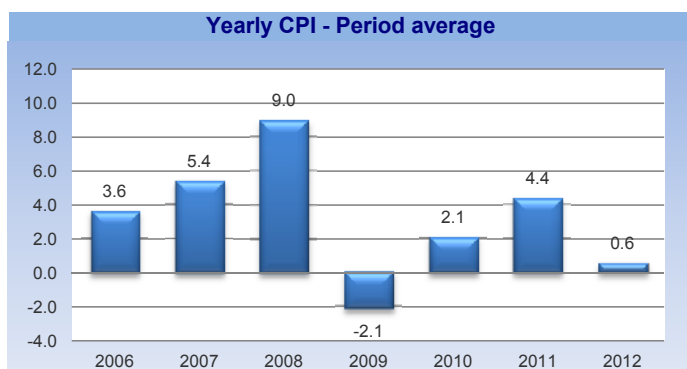
September	0.4	0.1	-0.3	0.4
October	-0.4	-0.5	-0.5	-0.1
November	0.3	0.4	0.1	-1.8
December	0.2	0.0	-0.1	-0.2

Consumer price index annual %-change

September	-3.7	-0.4	6.5	-2.1
October	-3.3	-0.6	6.5	-1.6
November	1.7	-0.5	6.2	-3.5
December	6.8	-0.7	6.1	-3.7

Consumer price index period average

September	-1.5	2.6	2.7	2.9
October	-2.6	2.9	3.2	2.2
November	-2.8	2.7	3.8	1.4
December	-2.1	2.1	4.4	0.6



Key points

In December 2012, the total consumer price index decreased by 0.2 percent compared to the previous month. With the exception of Recreation & culture (+1.1%), Food & non-alcoholic beverages (+0.2%), Clothing & footwear (+0.1%), Housing (+0.1%) and Restaurants & hotels (+0.1%), decreases in average prices have been recorded for Transport (-2.0%), Health (-0.4%) and Household operation (-0.3%). At the end of December 2012, the twelve-month average rate of inflation was at 0.6 percent, down from 4.4 percent recorded at the end of December 2011.

On a yearly basis, consumer prices fell with 3.7 percent in December 2012. Major price increases were recorded in the following sectors:

1. **Housing**; Average prices in the Housing sector fell with 10.7 percent compared to December 2011, mainly as a result of decreases in the prices of Electricity, gas & other fuels (-15.0%), Water supply & misc. services related to dwellings (-27.0%) and Maintenance & repair of dwellings (-3.1%).

2. **Clothing & footwear**; In December 2012, prices of Clothing & footwear declined by 9.5 percent compared to December 2011, mainly as a result of decreases in the average prices of Clothing (-9.9%) and Footwear (-6.4%).

3. **Household operation**; Average prices in the Household operation sector fell with 3.5 percent in December 2012. Lower prices were recorded for Furniture, furnishings, carpets & other floor coverings (-13.7%), Household textiles (-12.7%), Household appliances (-4.8%), Glassware, tableware & household utensils (-11.2%) and Tools & equipment for house & garden (-8.4%).

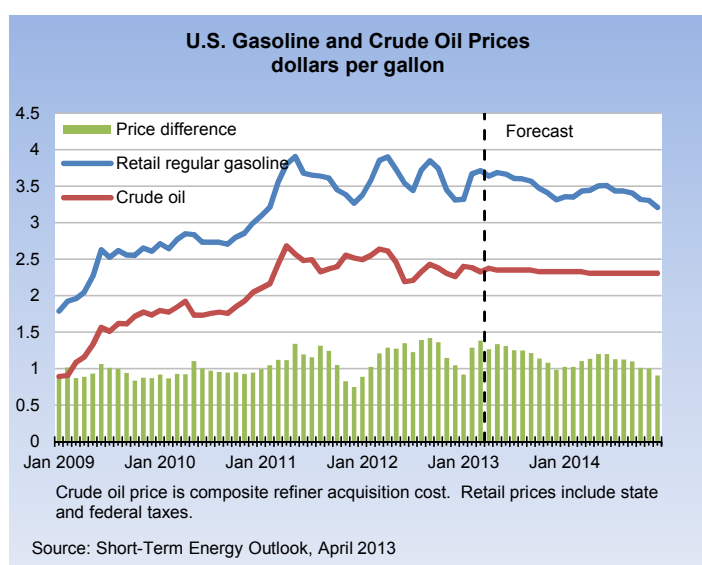
Related statistics in this bulletin

- 1.2 International aspects
- 2.1 Utilities
- Corresponding tables

Related statistics publications

- Consumer price index
- Economic profile
- Statistical yearbook

1.2 International aspects



Month	Sep-12	Oct-12	Nov-12	Dec-12
Consumer price index monthly %-change				
United States	0.4	0.0	-0.5	-0.3
Netherlands	0.4	0.6	-0.4	-0.1
Curacao	0.1	0.7	0.7	-0.7
Aruba	0.4	-0.1	-1.8	-0.2

Gasoline, diesel and world crude oil prices

United States

Gasoline (\$/gal)	3.85	3.75	3.45	3.31
Diesel (\$/gal)	4.12	4.09	4.00	3.96
Crude oil (\$/barrel)				
WTI - Cushing, Okl	94.51	89.49	86.53	87.86
Brent, Europe	112.86	111.71	109.06	109.49

Export price monthly %-change

USA	0.8	0.1	-0.6	-0.1
-----	-----	-----	------	------

Month	Period	Tourists	%-Ch
Latest tourist arrivals		2012	
St. Maarten*	Jan-Dec	456,720	7.6
Antigua & Barbuda	Jan-Dec	246,926	2.3
Aruba	Jan-Dec	903,934	4.0
Bahamas	Jan-Dec	1,417,299	5.3
Barbados	Jan-Dec	536,303	-5.5
Cayman Islands	Jan-Dec	321,650	4.1
Cuba	Jan-Dec	2,838,169	4.5
Curacao	Jan-Dec	419,621	7.5
Dominican Republic*	Jan-Dec	4,562,606	5.9
Jamaica	Jan-Dec	1,986,084	1.8
Martinique	Jan-Dec	487,359	-1.8
U.S. Virgin Islands	Jan-Dec	737,651	8.6
Puerto Rico**	Jan-Sep	1,201,038	7.5
Suriname	Jan-Oct	193,032	7.2

* Non-Resident Air Arrivals

** Non-Resident Hotel registrations only

Key points

In December 2012, the average WTI crude oil price increased by \$1.33 per barrel compared to the previous month, reaching \$87.86 per barrel. The Brent (Europe) crude oil reached \$109.49 per barrel in December 2012, up from \$109.06 per barrel recorded in November 2012.

The EIA expects that the Brent crude oil spot price, which averaged \$112 per barrel in 2012 and then increased to \$119 per barrel in February 2013, will average \$108 per barrel in 2013 and \$101 per barrel in 2014. Keep in mind that energy price forecasts are highly uncertain.

The EIA expects that regular gasoline retail prices, which averaged \$3.69 per gallon in the April-to-September period of 2012, will average \$3.63 per gallon in the similar period of 2013.

On-highway diesel fuel retail prices, which averaged \$3.95 per gallon in the April-to-September period of 2012, are expected to drop slightly to an average of \$3.94 per gallon in the similar period of 2013.

Related statistics in this bulletin

- 1.1 Consumer price index
- 2.1 Utilities

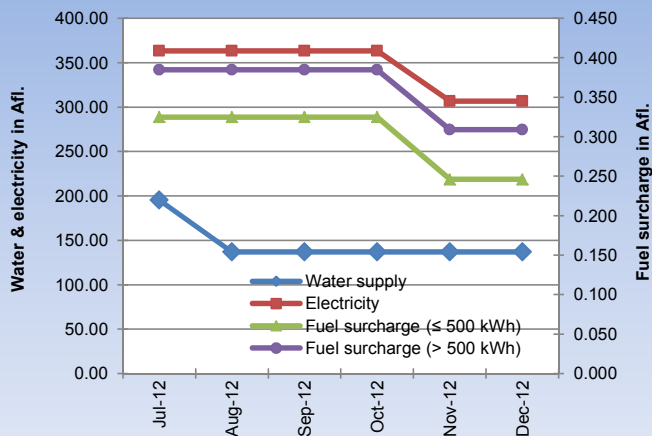
- 5 Tourism
- Corresponding tables

Related statistics publications

- Consumer price index
- Economic profile

Source: Energy Information Administration, Bureau of labor statistics, Caribbean Tourism Organization

2.1 Utilities



Sep-12 Oct-12 Nov-12 Dec-12

Utility prices in Afl.

	Sep-12	Oct-12	Nov-12	Dec-12
Electricity	363.27	363.27	306.75	306.75
Gasoline	2.45	2.45	2.33	2.20
Water	137.05	137.05	137.05	137.05
Diesel	2.14	2.18	2.16	2.08
Fuel surcharge (≤ 500kWh)	0.325	0.325	0.246	0.246
Fuel surcharge (> 500kWh)	0.385	0.385	0.309	0.309

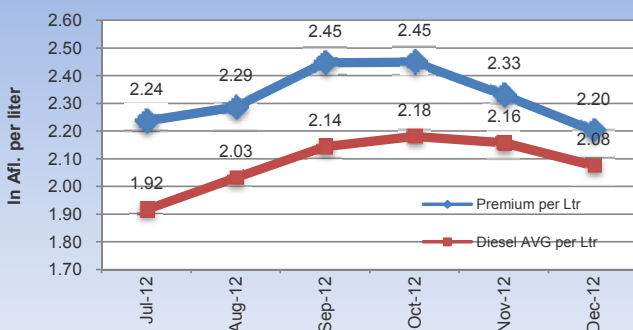
Utility prices monthly %-change

	Sep-12	Oct-12	Nov-12	Dec-12
Electricity	0.0	0.0	-15.6	0.0
Gasoline	7.0	0.1	-4.9	-5.5
Water	0.0	0.0	0.0	0.0
Diesel	5.5	1.7	-1.1	-3.8
Fuel surcharge (≤ 500kWh)	0.0	0.0	-24.3	0.0
Fuel surcharge (> 500kWh)	0.0	0.0	-19.7	0.0

Utility prices annual %-change

	Sep-12	Oct-12	Nov-12	Dec-12
Electricity	0.0	0.0	-15.6	-15.6
Gasoline	4.1	7.9	2.8	0.5
Water	-29.9	-29.9	-29.9	-29.9
Diesel	4.7	6.7	4.9	-1.2
Fuel surcharge (≤ 500kWh)	0.0	0.0	-24.3	-24.3
Fuel surcharge (> 500kWh)	0.0	0.0	-19.7	-19.7

Gasoline and Diesel Prices in Afl.



CPI USA: seasonally unadjusted

¹ Based on an average electricity consumption of 725.5 kWh per month.

² Based on an average per household

Key points

In December 2012, the price of gasoline declined by Afl. 0.13 per liter compared to the previous month, reaching Afl. 2.20 per liter. The average price of diesel fell with Afl. 0.08 per liter, reaching Afl. 2.08 per liter in December 2012. During the month of December 2012, the average prices per household of water and electricity remained unchanged when compared to November 2012.

Prices of utilities in Aruba during January 2013

	Price change	Impact on CPI
Electricity ¹	0.0%	0.00
Gasoline (premium)	-0.6%	-0.04
Water ²	0.0%	0.00
Diesel	-0.6%	0.00
Total impact		-0.04

Source: Central Bureau of Statistics Aruba

Disregarding any other important fluctuations in prices over the month of January 2013, price movement of electricity, gasoline and diesel during the month of January 2013 affects the consumer price index of January 2013 by -0.04.

Related statistics in this bulletin

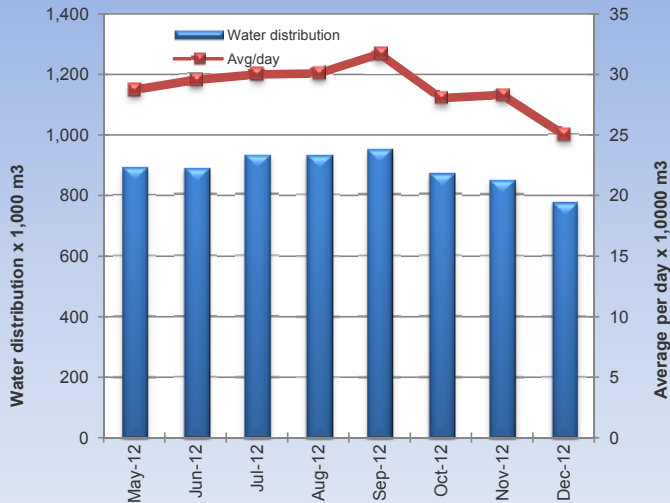
- 2.2 Water and electricity distribution
- Corresponding tables

Related statistics publications

- Consumer price index
- Economic profile
- Statistical yearbook

2.2 Water distribution

Monthly water distribution (in m3)



Month	2009	2010	2011	2012
-------	------	------	------	------

Average water distribution (m3)

September	951,368	957,950	896,219	951,287
October	949,989	791,971	858,714	869,778
November	983,789	863,930	839,510	849,179
December	948,856	808,806	812,179	775,741

Average water distribution monthly %-change

September	-6.4	-8.7	-5.3	2.0
October	-0.1	-17.3	-4.2	-8.6
November	3.6	9.1	-2.2	-2.4
December	-3.6	-6.4	-3.3	-8.6

Average water distribution annual %-change

September	3.8	0.7	-6.4	6.1
October	10.7	-16.6	8.4	1.3
November	23.2	-12.2	-2.8	1.2
December	5.3	-14.8	0.4	-4.5

Year to date average water distribution in m3 (January-December)



Key points

In December 2012, the average water distribution in Aruba (houses, companies, hotels, government) fell with 4.5 percent compared to December 2011. With the exception of Government offices (+19.0%), water usage increases were recorded for Houses (-6.4%), Companies (-6.1%) and Hotels (-1.3%). On a yearly basis, the total average water distribution increased by 4.3 percent in 2012, when compared to 2011.

Average water distribution (in m³)*

December 2012		% Change since		
		last month	last year	YTD % change
Houses	440,309	-10.8	-6.4	3.6
Companies	101,526	-11.3	-6.1	7.2
Hotels	214,846	-2.4	-1.3	3.8
Government	19,061	-10.5	19.0	16.5
Total	775,741	-8.6	-4.5	4.3

Source: WEB Aruba N.V., Central Bureau of Statistics Aruba

* Calculation of drink water distribution in Aruba (in m3) is based on an average water distribution per month, excluding the distribution to Valero and vessels.

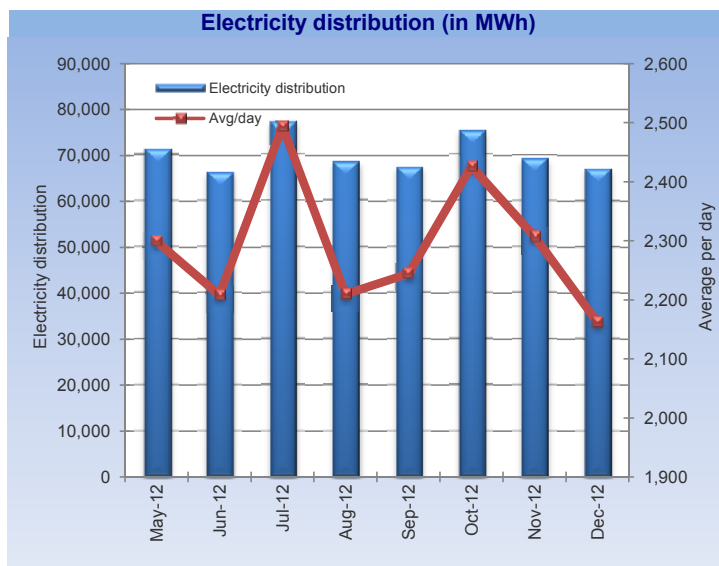
Related statistics in this bulletin

- 2.3 Electricity distribution
- Corresponding tables

Related statistics publications

- Economic profile
- Statistical yearbook

2.3 Electricity distribution



Month	2009	2010	2011	2012
-------	------	------	------	------

Average electricity distribution (MWh)

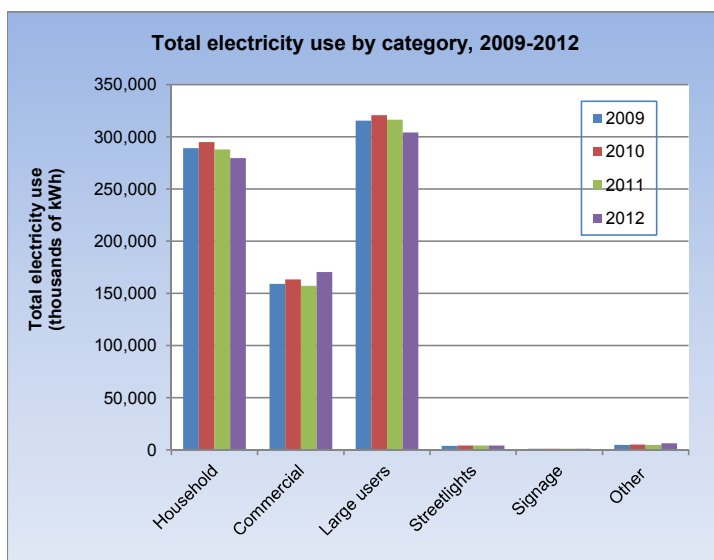
September	74,200	69,787	72,586	67,334
October	73,580	72,418	71,478	75,209
November	71,277	64,609	67,457	69,217
December	70,487	65,864	65,398	67,021

Average electricity distribution monthly %-change

September	0.0	-9.3	-3.0	-1.7
October	-0.8	3.8	-1.5	11.7
November	-3.1	-10.8	-5.6	-8.0
December	-1.1	1.9	-3.1	-3.2

Average electricity distribution annual %-change

September	2.1	-5.9	4.0	-7.2
October	8.0	-1.6	-1.3	5.2
November	8.2	-9.4	4.4	2.6
December	10.1	-6.6	-0.7	2.5



Key points

In December 2012, electricity (in MWh) supplied to Elmar for distribution rose by 2.5 percent compared to December 2011, in contrast to a drop of 0.7 percent recorded in the similar period one year earlier. On a year-to-date basis, electricity distribution declined by 1.1 percent in 2012, when compared to 2011.

Electricity Consumption (MWh)

	Oct-12	Nov-12	Dec-12
Household	25,188	23,394	24,203
Usage per connection	640.7	595.4	614.7
Commercial	14,419	18,881	16,532
Large users	26,822	21,062	20,548
Streetlights	351	351	351
Signage	111	109	108
Churches, schools, etc.	499	1,216	909
Total	67,390	65,012	62,650

Electricity Generation (MWh)*

Year	Valero	Windpark
2010	3,822	106,420
2011	4,168	112,429
2012	2,972	135,525

* January-to-December period

Related statistics in this bulletin

- 2.2 Water distribution
- Corresponding tables

Related statistics publications

- Economic profile
- Statistical yearbook

3 Foreign trade



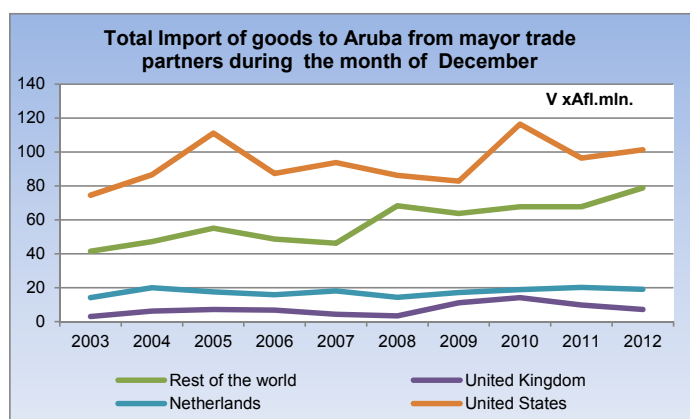
December 2012	Vx1,000 Afl.	Monthly % Ch	Yearly % Ch	YTD % Ch
---------------	-----------------	-----------------	----------------	-------------

Total import of goods to Aruba by commodity group

1. Agriculture products	60,411	7.6	4.7	10.3
2. Mineral chemical and related products	37,994	-7.3	4.3	-2.7
3. Textiles, pearls and precious stones	30,020	-6.0	19.0	-1.9
4. Metal products, machinery and equipment	44,465	-15.9	7.6	-16.6
5. Other transportable goods	33,380	-0.2	-0.3	1.3
Total Import	206,270	-4.2	6.2	-2.0

Total export of goods from Aruba by commodity group

1. Agriculture products	17,932	-25.5	12.4	10.2
2. Mineral chemical and related products	1,376	-80.5	296.3	161.2
3. Textiles, pearls and precious stones	475	-46.6	11.3	9.1
4. Metal products, machinery and equipment	3,867	15.6	102.8	82.8
5. Other transportable goods	726	-61.9	-89.9	-31.5
Total Export	24,376	-34.6	-5.5	14.3



Source: Customs Aruba, Central Bureau of Statistics Aruba

Key points

In December 2012, the total import of merchandise to Aruba increased by 6.2 percent compared to December 2011, in contrast to a drop of 10.5 percent recorded in the similar period one year earlier. With the exception of Other transportable goods (-0.3%), import increases have been recorded for Agriculture products (+4.7%), Mineral, chemical & related products (+4.3%), Textiles, pearls & precious stones (+19.0%) and Metal products, machinery & equipment (+7.6%).

On a yearly basis, the total import of goods to Aruba declined by 2.0 percent in 2012, when compared to 2011.

Compared to December 2011, the total exports of goods from Aruba fell with 5.5 percent in December 2012. Export decreases have been recorded for Other transportable goods (-89.9%), while exports of Agriculture products, Mineral, chemical & related products, Textiles, pearls & precious stones and Metal products, machinery & equipment increased by 12.4, 296.3, 11.3 and 102.8 percent respectively, when compared to December 2011.

On a yearly basis, the total export of goods from Aruba increased by 14.3 percent in 2012, when compared to 2011.

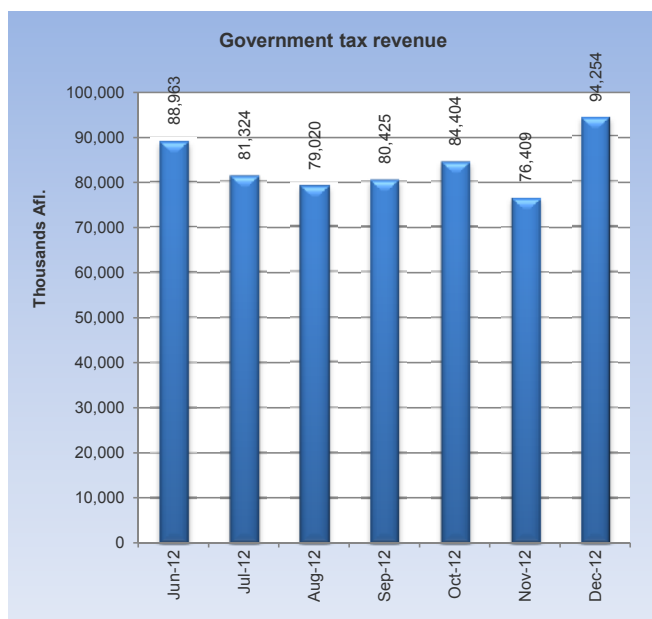
Related statistics in this bulletin

- Corresponding tables

Related statistics publications

- Foreign Trade Statistics
- Economic profile
- Statistical yearbook

4 Government



Month	2009	2010	2011	2012
-------	------	------	------	------

Total tax revenues (x 1,000 AfL.)

September	81,179	70,521	70,802	80,425
October	76,956	58,515	75,007	84,404
November	76,449	63,571	80,250	76,409
December	92,289	84,009	84,526	94,254

Total tax revenue monthly %-change

September	6.8	2.4	-2.3	1.8
October	-5.2	-17.0	5.9	4.9
November	-0.7	8.6	7.0	-9.5
December	20.7	32.1	5.3	23.4

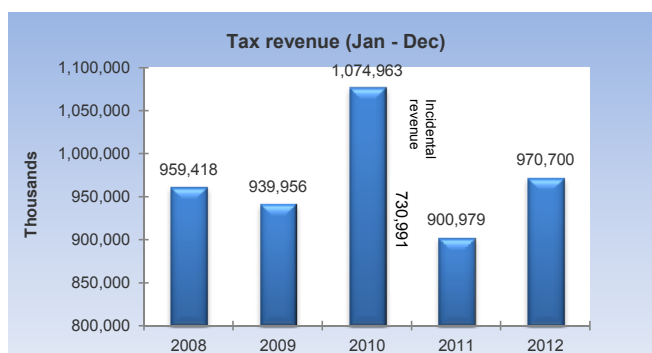
Total tax revenue annual %-change

September	1.9	-13.1	0.4	13.6
October	6.7	-24.0	28.2	12.5
November	1.0	-16.8	26.2	-4.8
December	12.8	-9.0	0.6	11.5

	Sep-12	Oct-12	Nov-12	Dec-12
--	--------	--------	--------	--------

(x 1,000 AfL.)

AOV / AWW	17,725	17,435	15,978	16,015
AZV	22,595	20,941	20,067	20,732
Total Social Contr.	40,320	38,376	36,044	36,747



Source: SIAD

Key points

In December 2012, the total government tax revenue rose by 11.5 percent compared to December 2011, following an increase of 0.6 percent recorded in the similar period one year earlier. On a yearly basis, the total government tax revenues rose by 7.7 percent compared to the similar period of 2011. The main increases were recorded for Profit tax (+23.9%), Wage tax (+4.5%), Tourist tax (+15.7%), Land tax (+27.8%), Income tax (+140.8%), Dividend tax (+85.4%), Succession tax (+2,318.8%) and Turnover tax (+4.0%).

Tax Revenues¹

December 2012	(x1,000 AfL.)	% Change since		
		last month	last year	YTD % change
Taxes on income & profit	43,048	43.3	35.1	14.7
Income tax	1,527	76250.0	159.6	140.8
Wage tax	27,997	54.2	35.1	4.5
Profit tax	12,245	18.1	-3.4	23.9
Dividend tax	1,279	-15.5	23.5	85.4
Taxes on commodities	28,219	0.9	-7.8	2.3
Import duties	17,806	12.2	-6.7	1.5
Excises on spirits	2,799	21.7	3.0	2.7
Excises on cigarettes	1	-100.0	-99.9	18.5
Excises on beer	2,533	16.7	-1.5	6.2
Excises on gasoline	4,860	-0.6	-2.1	-0.8
Other customs	220	48.6	60.6	3.7
Taxes on property	7,299	94.2	-0.8	13.4
Long-lease property rights	694	-40.9	-5.6	7.8
Land tax	2,199	4.0	24.2	27.8
Transfer tax	413	51.8	-67.8	-20.6
Succession tax	22	83.3	-43.6	2,318.8
Motor vehicle tax	3,971	2034.9	12.6	-0.2
Taxes on services	1,784	-2.7	-2.1	-30.7
Lodging tax	0			-99.0
Gambling licenses	1,745	-1.6	0.9	-9.2
Stamp duties	39	-33.9	-57.6	-58.9
Turnover tax (BBO)	7,218	-1.1	-0.5	4.0
Tourist tax	4,280	4.4	10.2	15.7
Other tax & nontax rev	2,406	70.0	39.2	-9.4
Total tax revenue	94,254	23.4	11.5	7.7

Source: Tax Collector's Office

¹ Excluding AZV and AOV/ AWW.

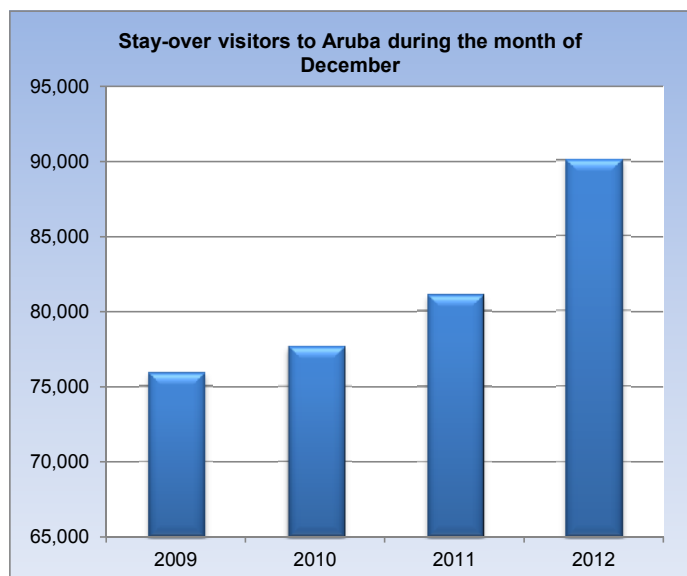
Related statistics in this bulletin

- Corresponding tables

Related statistics publications

- Economic profile
- Statistical yearbook

5 Tourism



Month	2009	2010	2011	2012
Total stay-over visitors				
September	55,162	58,333	63,587	69,538
October	63,252	66,985	64,961	65,629
November	67,848	63,242	66,552	73,212
December	75,905	77,662	81,108	90,071

Stay-over visitors monthly %-change				
September	-26.7	-20.1	-19.8	-16.7
October	14.7	14.8	2.2	-5.6
November	7.3	-5.6	2.4	11.6
December	11.9	22.8	21.9	23.0

Stay-over visitors annual %-change				
September	0.3	5.7	9.0	9.4
October	7.3	5.9	-3.0	1.0
November	2.6	-6.8	5.2	10.0
December	-3.8	2.3	4.4	11.1

	Sep-12	Oct-12	Nov-12	Dec-12
--	--------	--------	--------	--------

Airport arrivals

Resident	6,951	9,521	6,818	9,151
Non-resident	70,443	66,948	74,315	92,717

Landings

Commercial landings	1,165	1,169	1,239	1,389
Non-Commercial landings	575	491	363	616

Cruise Tourism

Cruise passengers	6,481	26,405	68,002	96,510
-------------------	-------	--------	--------	--------

Tourism

December 2012	% Change since			YTD % change
	last month	last year		
Total stay over visitors	90,071	23.0	11.1	4.0
USA	45,135	8.5	4.4	0.0
Venezuela	22,220	81.7	30.8	21.5
Colombia	2,296	19.3	2.6	8.5
Netherlands	3,026	-5.0	-4.9	-0.2
Neth. Antilles	2,392	8.3	6.8	6.1
Canada	6,696	80.3	25.9	13.3
Other	8,306	-0.6	5.0	1.5

Source: Aruba Tourism Authority

Key points

In December 2012, the total number of stay-over visitors to Aruba increased by 11.1 percent compared to December 2011, following a growth of 4.4 percent recorded during the similar period one year earlier. The main increases were recorded for the visitors from Venezuela (+30.8%), USA (+4.4%), Canada (+25.9%), Sweden (+53.4%) and Norway (+256.4%).

On a yearly basis, the total number of visitors to Aruba in 2012 increased by 4.0 percent compared to 2011. This growth is led by increases in the visitors from Venezuela (+21.5%), Canada (+13.3%), Argentina (+24.6%), Netherlands Antilles (+6.1%) and Colombia (+8.5%).

The share of the US market, which is the largest market, fell from 61.1 percent in December 2011 to 58.7 percent in December 2012. The Venezuelan market, the second largest market, recorded a market share of 15.8 percent in December 2012, up from 13.6 percent recorded in December 2011.

Related statistics in this bulletin

- Corresponding tables

Related statistics publications

- Tourist profile
- Economic profile
- Statistical yearbook

Consumer Price Index

(Dec 2006=100)

Sector	Nov '11	Dec '11	Nov '12	Dec '12	YTD ¹ 2011 in %	YTD 2012	Monthly % change	Yearly % change
Food & non-alcoholic beverages	141.4	141.8	141.4	141.7	6.1	-0.1	0.2	-0.1
Alcoholic beverages & tobacco	124.3	124.4	127.9	127.8	11.2	2.7	0.0	2.7
Clothing & footwear	109.9	108.8	98.4	98.5	-1.4	-9.5	0.1	-9.5
Housing	145.4	145.6	129.9	130.0	12.0	-10.7	0.1	-10.7
Household operation	103.4	103.3	100.0	99.7	-2.2	-3.5	-0.3	-3.5
Health	91.5	91.2	94.7	94.4	-1.1	3.5	-0.4	3.5
Transport	116.8	115.9	120.1	117.7	7.9	1.6	-2.0	1.6
Communications	86.9	86.9	86.9	86.9	3.7	-0.1	0.0	-0.1
Recreation & culture	115.0	115.2	111.7	112.9	2.4	-2.0	1.1	-2.0
Education	116.1	116.1	116.6	116.6	3.9	0.4	0.0	0.4
Restaurants & hotels	119.7	120.5	124.6	124.6	3.4	3.5	0.1	3.5
Miscellaneous goods & services	99.9	100.1	100.3	100.3	1.4	0.2	0.0	0.2
Total Index	121.4	121.4	117.1	116.8	6.1	-3.7	-0.2	-3.7
Fuel Surcharge per kWh in Afl. (≤ 500 kWh)	0.32	0.32	0.25	0.25	21.1	-24.3	0.0	-24.3
Fuel Surcharge per kWh in Afl. (> 500 kWh)	0.38	0.38	0.31	0.31	43.4	-19.7	0.0	-19.7
Electricity (in Afl.) ²	363.27	363.27	306.75	306.75	17.7	-15.6	0.0	-15.6
Aruba Gasoline (in Afl. per ltr)	2.27	2.19	2.33	2.20	11.0	0.5	-5.5	0.5
Water (in Afl.) ³	195.47	195.47	137.05	137.05	27.0	-29.9	0.0	-29.9
Aruba Diesel (in Afl. per ltr)	2.06	2.10	2.16	2.08	21.2	-1.2	-3.8	-1.2
US Gasoline (in \$ per ltr)	0.89	0.86	0.91	0.87	9.1	1.3	-4.1	1.3
US Diesel (in \$ per ltr)	1.05	1.02	1.06	1.05	19.1	2.6	-1.0	2.6
Crude Oil (in \$ per barrel)⁴								
WTI - Cushing, Oklahoma	97.16	98.56	86.53	87.86	10.6	-10.9	1.5	-10.9
Brent, Europe	110.77	107.87	109.06	109.49	18.0	1.5	0.4	1.5

Utilities

Electricity supplied to Elmar for distribution (in MWh)

Total average	67,457	65,398	69,217	67,021	820,800	812,098	-3.2	2.5
---------------	--------	--------	--------	--------	---------	---------	------	-----

Water consumption (in m3)

Houses	488,887	470,283	493,381	440,309	6,167,513	6,386,908	-10.8	-6.4
Companies	110,540	108,158	114,427	101,526	1,312,891	1,407,416	-11.3	-6.1
Hotels	223,019	217,720	220,072	214,846	2,858,902	2,966,260	-2.4	-1.3
Government	17,064	16,018	21,299	19,061	213,444	248,702	-10.5	19.0
Total average	839,510	812,179	849,179	775,741	10,552,750	11,009,286	-8.6	-4.5

¹⁾ YTD (Year to date) refers to the period of January 1st of the current year to the month under review.

²⁾ Based on an average use of 725.5 kWh

³⁾ Based on an average per household

⁴⁾ Unweighted average of daily closing spot prices

Foreign Trade in Merchandise (*1,000 Afl.)

	Nov '11	Dec '11	Nov '12	Dec '12	YTD ¹ 2011	YTD 2012	Monthly % change	Yearly % change
Imports of goods by commodity group								
Agriculture products	59,198	57,725	56,128	60,411	646,855	713,750	7.6	4.7
Mineral chemical and related products	41,700	36,445	40,972	37,994	466,381	453,931	-7.3	4.3
Textiles, pearls and precious stones	39,210	25,226	31,931	30,020	241,177	236,646	-6.0	19.0
Metal products, machinery and equipment	61,253	41,324	52,851	44,465	599,825	500,308	-15.9	7.6
Other transportable goods	33,292	33,489	33,449	33,380	345,822	350,421	-0.2	-0.3
Total Import	234,654	194,209	215,332	206,270	2,300,058	2,255,056	-4.2	6.2
Exports of goods by commodity group								
Agriculture products	18,962	15,953	24,080	17,932	210,667	232,236	-25.5	12.4
Mineral chemical and related products	143	347	7,046	1,376	6,076	15,874	-80.5	296.3
Textiles, pearls and precious stones	1,148	427	890	475	15,419	16,825	-46.6	11.3
Metal products, machinery and equipment	1,125	1,907	3,346	3,867	16,011	29,261	15.6	102.8
Other transportable goods	557	7,171	1,907	726	22,760	15,583	-61.9	-89.9
Total Export	21,934	25,805	37,269	24,376	270,934	309,779	-34.6	-5.5

Government Revenues (*1,000 Afl.)

	Nov '11	Dec '11	Nov '12	Dec '12	YTD ¹ 2011	YTD 2012	Monthly change	Yearly change
Taxes on income and profit								
Income tax	-1,797	-2,562	2	1,527	-5,006	2,041	76,250.0	159.6
Wage tax	17,413	20,724	18,154	27,997	230,779	241,072	54.2	35.1
Profit tax	14,675	12,672	10,364	12,245	124,912	154,773	18.1	-3.4
Dividend tax	252	1,036	1,514	1,279	6,190	11,479	-15.5	23.5
Taxes on commodities	25,808	30,611	27,975	28,219	275,949	282,364	0.9	-7.8
Import duties	15,262	19,085	15,871	17,806	158,032	160,394	12.2	-6.7
Excises on spirits	2,121	2,717	2,300	2,799	19,511	20,033	21.7	3.0
Excises on cigarettes	1,368	1,138	2,598	1	12,441	14,742	-100.0	-99.9
Excises on beer	2,068	2,572	2,171	2,533	25,411	26,978	16.7	-1.5
Excises on gasoline, diesel, kerosine	4,728	4,962	4,887	4,860	57,834	57,397	-0.6	-2.1
Other customs	261	137	148	220	2,720	2,820	48.6	60.6
Taxes on property	9,840	7,356	3,759	7,299	78,094	88,576	94.2	-0.8
Long-lease property rights (erfpachtsrechten)	1,245	735	1,175	694	17,428	18,796	-40.9	-5.6
Land tax	6,100	1,771	2,114	2,199	25,568	32,671	4.0	24.2
Transfer tax	2,279	1,283	272	413	13,483	10,709	51.8	-67.8
Succession tax	20	39	12	22	208	5,031	83.3	-43.6
Motor vehicle tax (incl. numberplates)	196	3,528	186	3971	21,407	21,369	2,034.9	12.6
Taxes on services	1,949	1,822	1,833	1,784	30,314	21,022	-2.7	-2.1
Lodging tax	0	0	0	0	6,055	58		
Gambling licenses	1,764	1,730	1,774	1,745	22,130	20,089	-1.6	0.9
Stamp duties	185	92	59	39	2,129	875	-33.9	-57.6
Turnover tax (BBO)	6,597	7,253	7,295	7,218	85,191	88,612	-1.1	-0.5
Tourist tax	3,865	3,885	4,098	4,280	52,593	60,865	4.4	10.2
Other tax and nontax revenues	1,648	1,729	1,415	2,406	21,963	19,896	70.0	39.2
Total tax revenues²	80,250	84,526	76,409	94,254	900,979	970,700	23.4	11.5

¹⁾ YTD (Year to date) refers to the period of January 1st of the current year to the month under review. This period is compared to the same period of the previous year.

²⁾ AZV and AOV/AWW are not included.

Tourism

	Nov '11	Dec '11	Nov '12	Dec '12	YTD ¹ 2011	YTD 2012	Monthly % change	Yearly % change
Total stay over visitors	66,552	81,108	73,212	90,071	868,973	903,934	23.0	11.1
USA	40,715	43,229	41,600	45,135	531,130	530,949	8.5	4.4
Venezuela	8,911	16,989	12,226	22,220	117,838	143,201	81.7	30.8
Colombia	1,107	2,238	1,925	2,296	16,703	18,127	19.3	2.6
Netherlands	3,233	3,181	3,186	3,026	40,068	39,973	-5.0	-4.9
Neth. Antilles	2,222	2,240	2,208	2,392	25,765	27,345	8.3	6.8
Canada	3,097	5,319	3,714	6,696	40,487	45,887	80.3	25.9
Other	7,267	7,912	8,353	8,306	96,982	98,452	-0.6	5.0
Airport Traffic								
Total landings	1,394	1,769	1,602	2,005	19,225	20,542	25.2	13.3
Commercial landings	1,045	1,195	1,239	1,389	14,732	15,071	12.1	16.2
Non-commercial landings	349	574	363	616	4,493	5,471	69.7	7.3
Passenger Traffic								
Total arrivals	74,576	90,720	81,133	101,868	980,544	1,020,731	25.6	12.3
Arrival locals	6,573	7,501	6,818	9,151	95,418	98,753	34.2	22.0
Arrival visitors	68,003	83,219	74,315	92,717	885,126	921,978	24.8	11.4

Cruise tourism

	Nov '11	Dec '11	Nov '12	Dec '12	YTD ¹ 2011	YTD 2012	Monthly % change	Yearly % change
Cruise passengers	73,091	103,268	68,002	96,510	599,973	582,313	41.9	-6.5
Cruise calls	39	49	35	49	332	294	40.0	0.0
Crew members	30,202	39,850	28,225	38,309	249,752	233,327	35.7	-3.9

¹⁾ YTD (Year to date) refers to the period of January 1st of the current year to the month under review. This period is compared to the same period of the previous year.