



Highlights November 2011 in Review

Consumer Prices:

- Year over year inflation up by 6.2 percent
- Period average inflation at 3.8 percent in November 2011
- Price of gasoline remained at Afl. 2.27 in November 2011
- Average price of diesel up by Afl. 0.01 in November 2011
- WTI crude oil price reached \$ 97.17 per barrel
- Brent (Europe) crude oil price at \$ 110.77 per barrel

Utilities:

- Total average water distribution down by 2.8 percent
- Average electricity distribution up by 4.4 percent

Foreign Trade:

- Import of goods up by 7.1 percent in November 2011
- Value of export down by 5.7 percent in November 2011

Government:

- Total tax revenue in November 2011 up by 26.2 percent
- Taxes on income & profit up by 28.5 percent
- Taxes on commodities up by 20.5 percent
- Taxes on property up by 155.1 percent in November 2011
- Turnover tax (BBO) up by 3.5 percent

Tourism:

- Total stayover visitors up by 5.6 percent in November 2011
- U.S. visitors fell with 0.7 percent in November 2011
- Visitors from Venezuela increased by 34.3 percent

Airport and Passenger Traffic:

- Commercial landings down by 12.6 percent in November 2011
- Arrival visitors up by 4.1 percent in November 2011

Enterprises:

- 31 new business licenses granted in November 2011

Monthly Economic Indicators

November 2011	% Change	
	Last Month	Last Year
Consumer prices		
Total index	0.1	6.2
Utilities		
Water consumption	-2.2	-2.8
Electricity distribution	-5.6	4.4
Foreign trade		
Import	12.6	7.1
Export	-8.6	-5.7
Government		
Total tax revenue	7.0	26.2
Tourism		
Total stayover visitors	2.4	5.6
USA	5.5	-0.7
Venezuela	7.6	34.3
Colombia	-20.1	3.7
Netherlands	-15.4	-5.9
Cruise arrivals	139.1	-17.2
Airport & passenger traffic		
Commercial landings	-4.7	-12.6
Arrival visitors	2.4	4.1

Source: Central Bureau of Statistics Aruba

L.G. Smith Boulevard 160
Oranjestad, Aruba
Phone: +297 5837433
Fax: +297 5838057
www.cbs.aw



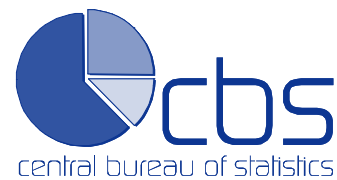


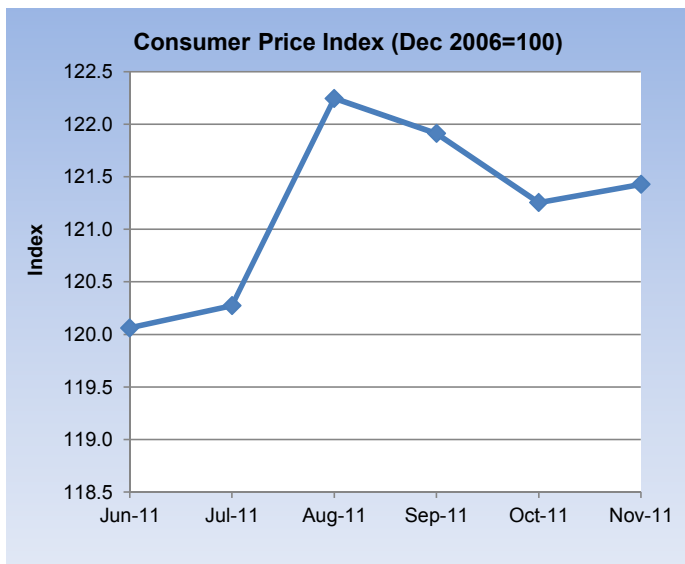
Table of Contents

■ Consumer Price Index.....	5
■ International aspects.....	6
■ Utilities.....	7
■ Water distribution.....	8
■ Electricity distribution.....	9
■ Foreign Trade.....	10
■ Government Revenues.....	11
■ Tourism.....	12
■ Corresponding Tables	

L.G. Smith Boulevard 160
Oranjestad, Aruba
Phone: +297 5837433
Fax: +297 5838057
www.cbs.aw



1.1 Consumer Price Index



Month	2008	2009	2010	2011
-------	------	------	------	------

Consumer price index

August	120.1	114.5	114.4	122.2
September	119.4	115.0	114.5	121.9
October	118.4	114.6	113.9	121.3
November	113.0	114.9	114.3	121.4

Consumer price index monthly %-change

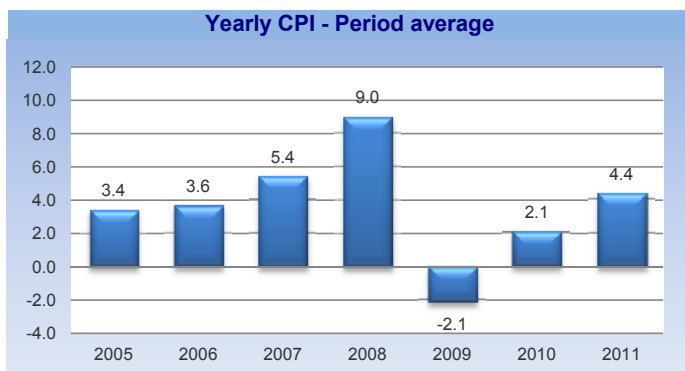
August	1.8	-0.1	-0.2	1.6
September	-0.6	0.4	0.1	-0.3
October	-0.8	-0.4	-0.5	-0.5
November	-4.6	0.3	0.4	0.1

Consumer price index annual %-change

August	12.7	-4.7	-0.1	6.8
September	12.4	-3.7	-0.4	6.5
October	10.9	-3.3	-0.6	6.5
November	4.4	1.7	-0.5	6.2

Consumer price index period average

August	9.4	-0.2	2.3	2.1
September	10.0	-1.5	2.6	2.7
October	10.3	-2.6	2.9	3.2
November	10.0	-2.8	2.7	3.8



Key points

In November 2011, the total consumer price index increased by 0.1 percent compared to the previous month, particularly as a result of increases in the average prices of Communications (+4.8%), Food & non-alcoholic beverages (+0.5%), Restaurants & hotels (+0.3%), Misc. goods & services (+0.3%), Housing (+0.1%) and Education (+0.1%). On the other hand, decreases were recorded for Clothing & footwear (-1.6%), Household operation (-1.3%), Recreation & culture (-0.5%) and Alcoholic beverages & tobacco (-0.1%). At the end of November 2011, the twelve-month average rate of inflation was at 3.8 percent, up from 2.7 percent recorded at the end of November 2010.

On a yearly basis, consumer prices increased by 6.2 percent in November 2011. Major price increases were recorded in the following sectors:

1. *Housing*; Average prices in the Housing sector increased by 11.9 percent compared to November 2010, as a result of increases of Water supply & misc. services related to dwellings (+23.9%), Electricity, gas & other fuels (+17.2%) and Actual rentals for housing (+5.6%). Prices of Maintenance & repair of dwellings fell with 1.6 percent.

2. *Transport*; In October 2011, prices in the Transport sector rose by 8.1 percent compared to November 2010. Higher prices were recorded for Operation of personal transport equipment (+12.7%), Transport services (+10.4%) and Purchase of vehicles (+2.1%).

3. *Food & non-alcoholic beverages*; Prices in this sector increased by 6.4 percent in November 2011. Average prices of Food and Alcoholic beverages increased by 6.8 and 3.9 percent respectively, compared to November 2010.

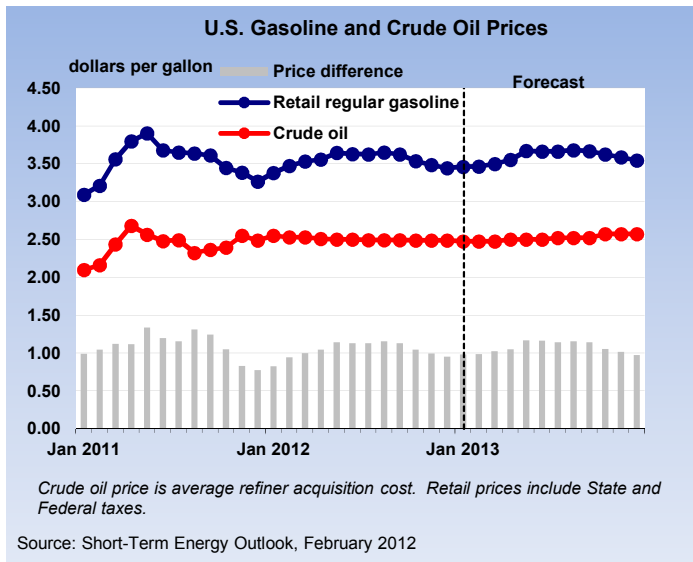
Related statistics in this bulletin

- 1.2 International aspects
- 2.1 Utilities
- Corresponding tables

Related statistics publications

- Consumer price index
- Economic profile
- Statistical yearbook

1.2 International aspects



Month	Aug-11	Sep-11	Oct-11	Nov-11
-------	--------	--------	--------	--------

Consumer price index monthly %-change

United States	0.3	0.2	-0.2	-0.1
Netherlands	0.1	0.7	0.0	-0.1
Curacao	0.3	0.3	0.2	-0.1
Aruba	1.6	-0.3	-0.5	0.1

Gasoline, diesel and world crude oil prices

United States

Gasoline (\$/gal)	3.64	3.61	3.45	3.38
Diesel (\$/gal)	3.86	3.84	3.80	3.96
Crude oil (\$/barrel)				
WTI - Cushing, Okl	86.33	85.52	86.32	97.17
Brent, Europe	110.22	112.83	109.55	110.77

Export price monthly %-change

USA	0.4	0.5	-2.0	0.1
-----	-----	-----	------	-----

Month	Period	Tourists
-------	--------	----------

Latest tourist arrivals

Aruba	Jan-Nov	789,861
Bahamas	Jan-Oct	1,121,789
Barbados	Jan-Nov	512,783
Belize	Jan-Nov	223,319
Cancun (Mexico)**	Jan-Sep	1,671,710
British Virgin Islands.	Jan-Oct	276,872
Cayman Islands	Jan-Nov	275,738
Cuba	Jan-Nov	2,440,306
Curacao	Jan-Nov	352,417
Dominican Republic*	Jan-Nov	3,862,045
Jamaica	Jan-Sep	1,501,782
Martinique	Jan-Oct	410,958
Puerto Rico**	Jan-Oct	1,199,876
St. Maarten*	Jan-Sep	316,155
Suriname	Jan-Oct	176,817
US Virgin Islands	Jan-Oct	555,273

* Non-Resident Air Arrivals

** Non-Resident Hotel registrations only

Key points

In November 2011, the average WTI crude oil price increased by \$10.85 per barrel compared to October 2011, reaching \$97.17 per barrel. The Brent (Europe) crude oil reached \$110.77 per barrel, up from \$109.55 per barrel in the previous month.

The EIA expects the price of WTI crude oil to average about \$100 per barrel in 2012, almost \$6 per barrel higher than the average price in 2011. For 2013, expectations are that the WTI will continue to rise, reaching \$106 per barrel in the fourth quarter. Keep in mind that energy price forecast are highly uncertain.

The EIA expects that the regular-grade gasoline retail prices to average \$3.55 per gallon in 2012, compared with \$3.53 per gallon last year, and then average \$3.59 per gallon in 2013.

The EIA projects the high-way diesel fuel retail prices to average \$3.91 per gallon in 2012 and \$3.99 per gallon in 2013.

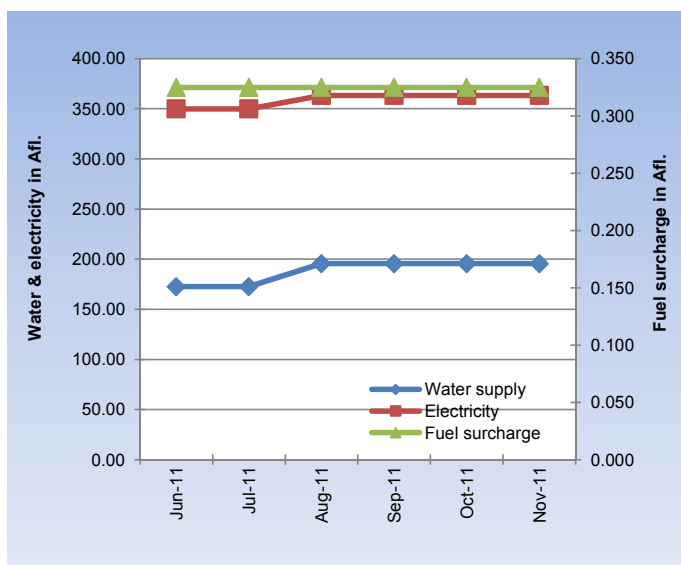
Related statistics in this bulletin

- 1.1 Consumer price index
- 2.1 Utilities
- 5 Tourism
- Corresponding tables

Related statistics publications

- Consumer price index
- Economic profile

2.1 Utilities



Aug-11 Sep-11 Oct-11 Nov-11

Utility prices

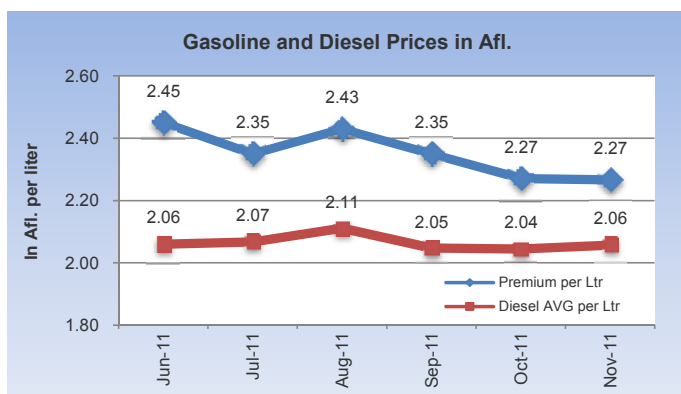
	Aug-11	Sep-11	Oct-11	Nov-11
Electricity	363.27	363.27	363.27	363.27
Gasoline	2.43	2.35	2.27	2.27
Water	195.47	195.47	195.47	195.47
Diesel	2.11	2.05	2.04	2.06
Fuel surcharge	0.325	0.325	0.325	0.325

Utility prices monthly %-change

	Aug-11	Sep-11	Oct-11	Nov-11
Electricity	3.9	0.0	0.0	0.0
Gasoline	3.4	-3.3	-3.4	-0.2
Water	13.3	0.0	0.0	0.0
Diesel	2.1	-3.0	-0.1	0.6
Fuel surcharge	0.0	0.0	0.0	0.0

Utility prices annual %-change

	Aug-11	Sep-11	Oct-11	Nov-11
Electricity	14.0	14.0	17.7	17.7
Gasoline	26.4	23.3	19.8	16.1
Water	20.5	20.5	27.0	27.0
Diesel	32.6	26.7	25.6	21.0
Fuel surcharge	15.2	15.2	21.1	21.1



CPI USA: seasonally unadjusted

¹ Based on an average electricity consumption of 725.5 kWh per month.

² Based on an average per household

Key points

In November 2011, the average price of water and electricity remained unchanged when compared to the previous month. The price of gasoline remained practically unchanged at Afl. 2.27 per liter in November 2011. In November 2011, the price of diesel increased by Afl. 0.01 per liter compared to the previous month, reaching an average price of Afl. 2.06 per liter.

Prices of utilities in Aruba during December 2011

	Price change	Impact on CPI
Electricity ¹	0.0%	0.00
Gasoline (premium)	-3.3%	-0.21
Water ²	0.0%	0.00
Diesel	2.1%	0.01
Rent	0.5%	0.04
Total impact		-0.16

Source: Central Bureau of Statistics Aruba

Disregarding any other important fluctuations in prices over the month of December 2011, price movement of gasoline, diesel and rent during the month of December 2011 will affect to the consumer price index of December 2011 by -0.16.

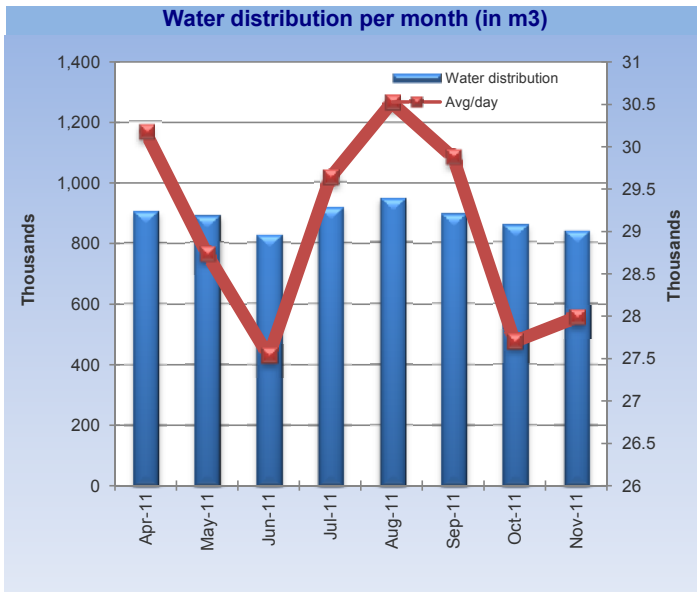
Related statistics in this bulletin

- 2.2 Water and electricity distribution
- Corresponding tables

Related statistics publications

- Consumer price index
- Economic profile
- Statistical yearbook

2.2 Water distribution



Month	2008	2009	2010	2011
-------	------	------	------	------

Average water distribution (m3)

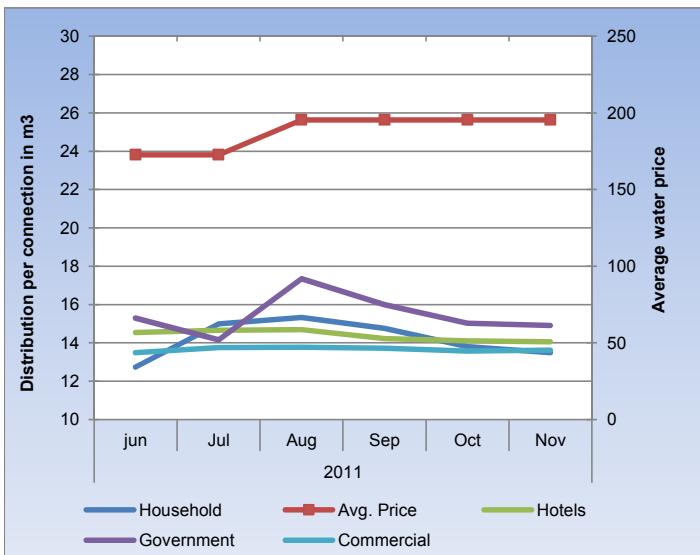
August	966,889	1,016,670	1,049,207	946,110
September	916,667	951,368	957,950	896,219
October	857,940	949,989	791,971	858,714
November	798,315	983,789	863,930	839,510

Average water distribution monthly %-change

August	1.1	5.3	21.1	3.0
September	-5.2	-6.4	-8.7	-5.3
October	-6.4	-0.1	-17.3	-4.2
November	-6.9	3.6	9.1	-2.2

Average water distribution annual %-change

August	-7.0	5.1	3.2	-9.8
September	-3.6	3.8	0.7	-6.4
October	-13.9	10.7	-16.6	8.4
November	-12.8	23.2	-12.2	-2.8



Hotels (x100 m3)

Key points

In November 2011, the average water distribution in Aruba (houses, companies, hotels, government) decreased by 2.8 percent compared to November 2010. With the exception of Hotels (+0.4%) and Government (+11.2%), water usage decreases has been recorded for Households (-4.4%) and Companies (-4.1%). In the January-to-November period of 2011, total water distribution is running 5.5 percent below the level recorded during the similar period of 2010.

Average water distribution (in m³)*

November 2011	% Change since			YTD % change
	last month	last year		
Houses	488,887	-2.4	-4.4	-6.7
Companies	110,540	1.0	-4.1	-1.5
Hotels	223,019	-3.5	0.4	-4.8
Government	17,064	-1.3	11.2	-3.4
Total	839,510	-2.2	-2.8	-5.5

Average water usage per connection

	m3	% Change		
Houses	13.5	-2.3	-6.8	-8.5
Companies	45.3	1.6	-7.2	-2.8
Hotels	5,068.6	-1.3	0.4	-5.0
Government	61.4	-2.4	7.6	-4.8

Source: WEB Aruba N.V., Central Bureau of Statistics Aruba

* Calculation of drink water distribution in Aruba (in m3) is based on an average water distribution per month, excluding the distribution to Valero and vessels.

On a monthly basis, the total average water usage fell with 2.2 percent in November 2011. With the exception of Companies (+1.0%), water usage decreases has been recorded for Hotels (-3.5%), Houses (-2.4%) and Government (-1.3%).

Related statistics in this bulletin

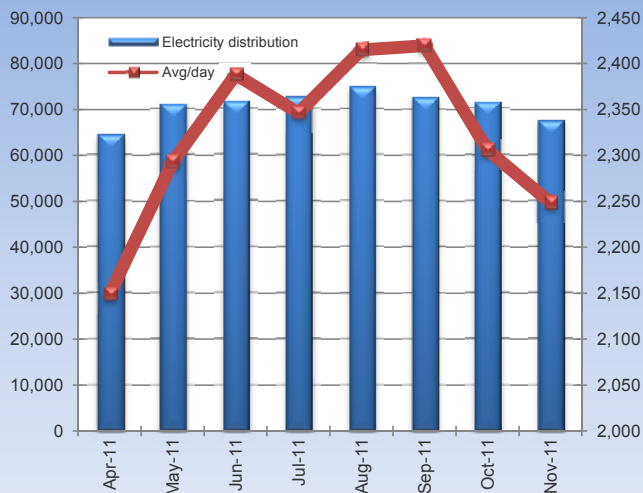
- 2.3 Electricity distribution
- Corresponding tables

Related statistics publications

- Economic profile
- Statistical yearbook

2.3 Electricity distribution

Electricity distribution (in MWh)



Month	2008	2009	2010	2011
-------	------	------	------	------

Electricity distribution (MWh)

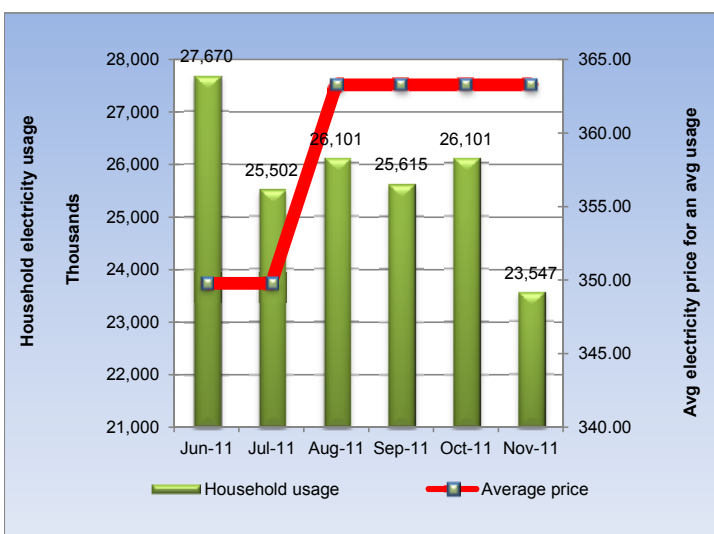
August	73,309	74,225	76,912	74,864
September	72,659	74,200	69,787	72,586
October	68,105	73,580	72,418	71,478
November	65,863	71,277	64,609	67,457

Electricity distribution monthly %-change

August	4.2	4.3	2.6	2.9
September	-0.9	0.0	-9.3	-3.0
October	-6.3	-0.8	3.8	-1.5
November	-3.3	-3.1	-10.8	-5.6

Electricity distribution annual %-change

August	-0.5	1.2	3.6	-2.7
September	7.3	2.1	-5.9	4.0
October	-5.5	8.0	-1.6	-1.3
November	-1.4	8.2	-9.4	4.4



Key points

In November 2011, electricity (in MWh) supplied to Elmar for distribution increased by 4.4 percent compared to November 2010, in contrast to a drop of 9.4 percent recorded in the similar period a year ago. In the January-to-November period of 2011, electricity distribution declined by 3.2 percent compared to the similar period of 2010.

Electricity Consumption (MWh)

	Sep-11	Oct-11	Nov-11
Household	25,615	26,101	23,547
Per connection	660.2	672.1	605.6
Commercial	14,617	13,503	13,475
Large users	27,281	27,073	25,914
Streetlights	353	352	349
Signage	99	100	97
Churches, schools, etc.	473	412	448
Total	68,438	67,541	63,830

On a monthly basis, the total electricity usage (as reported by the ELMAR N.V.) declined by 5.5 percent in November 2011. Compared to November 2011, the total electricity usage increased by 1.5 percent in the November 2012. On a year to date basis, the total electricity usage fell by 2.4 percent in November 2011, when compared to 2010.

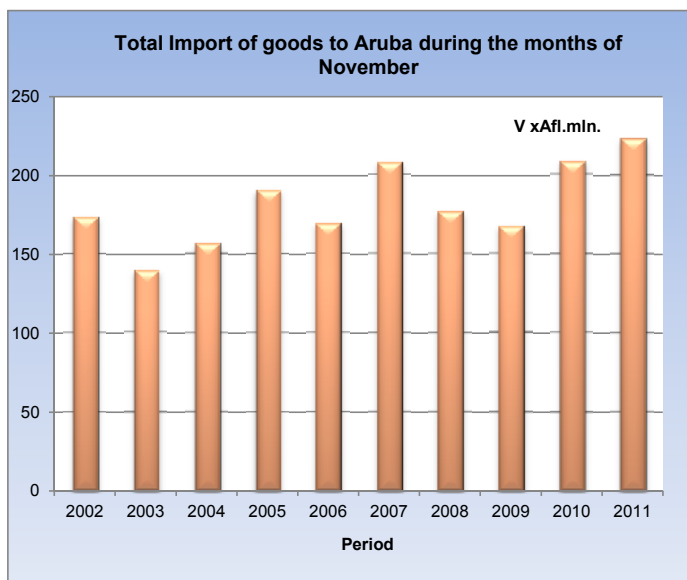
Related statistics in this bulletin

- 2.2 Water distribution
- Corresponding tables

Related statistics publications

- Economic profile
- Statistical yearbook

3 Foreign trade



November 2011	Vx1,000 Afl.	Monthly % Ch	Yearly % Ch	YTD % Ch
---------------	--------------	--------------	-------------	----------

Total import of goods to Aruba by commodity group

1. Agriculture products	61,827	23.3	-1.9	7.4
2. Mineral chemical and related products	27,209	-31.5	5.7	26.4
3. Textiles, pearls and precious stones	39,210	49.0	10.9	16.2
4. Metal products, machinery and equipment	61,301	14.4	16.4	54.5
5. Other transportable goods	33,457	18.2	6.3	20.7
Total Import	223,004	12.6	7.1	24.2

Total export of goods to Aruba by commodity group

1. Agriculture products	18,962	52.8	-7.2	24.9
2. Mineral chemical and related products	132	-46.7	-75.4	27.0
3. Textiles, pearls and precious stones	1,148	347.8	104.4	163.8
4. Metal products, machinery and equipment	1,125	5.3	75.1	56.6
5. Other transportable goods	557	-94.4	-48.2	104.9
Total Export	21,923	-8.6	-5.7	38.1



Source: Customs Aruba, Central Bureau of Statistics Aruba

Key points

Total import of merchandise increased by 7.1 percent in November 2011, when compared to November 2010. With the exception of Agriculture products (-1.9%), import increases has been recorded for all commodities, particularly, Mineral, chemical & related products (+5.7%), Textiles, pearls & precious stones (+10.9%), Metal products, machinery & equipment (+16.4%) and Other transportable goods (+6.3%). In the January-to-November period of 2011, total imports expanded by 24.2 percent compared to the similar period of 2010.

In November 2011, the total exports declined by 5.7 percent compared to November 2010, in contrast to an increase 10.5 percent recorded in the similar period one year earlier. With the exception of Textiles, pearls & precious stones (+104.4%) and Metal products, machinery & equipment (+75.1%), export decreases has been recorded for Agriculture products (-7.2%), Mineral, chemical & related products (-75.4%) and Other transportable goods (-48.2%). On a year to date basis, total exports in November increased by 38.1 percent compared to the similar period of 2010.

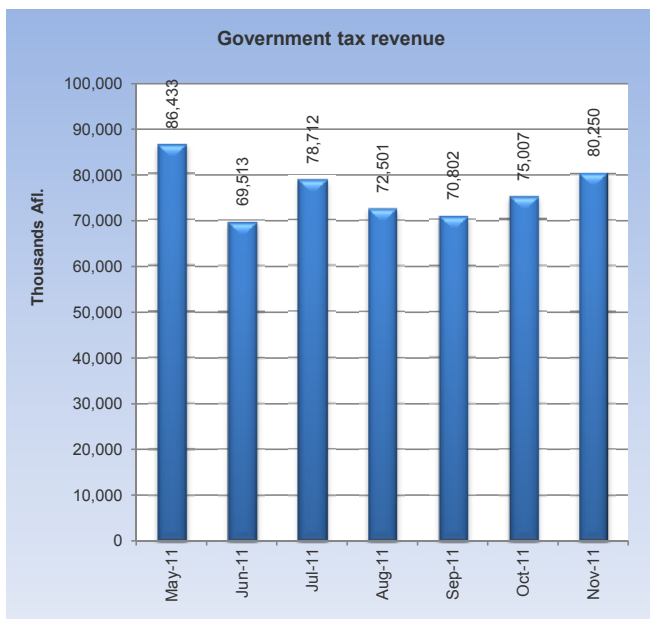
Related statistics in this bulletin

- Corresponding tables

Related statistics publications

- Foreign Trade Statistics
- Economic profile
- Statistical yearbook

4 Government



Month	2008	2009	2010	2011
-------	------	------	------	------

Total tax revenues (x 1,000 AfL.)

	2008	2009	2010	2011
August	85,400	75,996	68,894	72,501
September	79,646	81,179	70,521	70,802
October	72,141	76,956	58,515	75,007
November	75,662	76,449	63,571	80,250

Total tax revenue monthly %-change

	2008	2009	2010	2011
August	-6.9	2.1	5.3	-7.9
September	-6.7	6.8	2.4	-2.3
October	-9.4	-5.2	-17.0	5.9
November	4.9	-0.7	8.6	7.0

Total tax revenue annual %-change

	2008	2009	2010	2011
August	5.4	-11.0	-9.3	5.2
September	13.2	1.9	-13.1	0.4
October	-5.2	6.7	-24.0	28.2
November	-1.5	1.0	-16.8	26.2

	Aug-11	Sep-11	Oct-11	Nov-11
(x 1,000 AfL.)				
AOV / AWW	14,059	14,966	14,108	11,315
AZV	19,250	18,774	19,871	18,642
Total Social Contr.	33,309	33,740	33,979	29,958

Key points

In November 2011, the total government tax revenue rose by 26.2 percent compared to November 2010, in contrast to a drop of 16.8 percent recorded in the same period one year ago. Revenue increases has been recorded for the Profit tax (+158%), Excises on gasoline (+67,443%), Land tax (+297%), Transfer tax (+115%), Excises on spirits (+42%), Long-lease property rights (+17%) and Import duties (+1%). In November 2011, the Turnover tax and the Tourist tax increased by 3.5 and 2.5 percent respectively, compared to November 2010. In the January-to-November period of 2011, total tax revenues fell with 17.6 percent compared to the similar period of 2010.

Tax Revenues¹

November 2011	(x1,000 AfL.)	% Change since		
		last month	last year	YTD % change
Taxes on income & profit	30,543	0.8	28.5	16.6
Income tax	-1,797	-152.4	-4.4	75.4
Wage tax	17,413	-4.1	-10.3	0.5
Profit tax	14,675	16.7	158.0	50.7
Dividend tax	252	-9.0	-33.7	1.8
Taxes on commodities	25,808	2.6	20.5	13.2
Import duties	15,262	9.8	0.8	14.2
Excises on spirits	2,121	65.8	41.8	23.6
Excises on cigarettes	1,368	-24.8	-27.6	12.7
Excises on beer	2,068	-29.8	-23.9	6.8
Excises on gasoline	4,728	-5.7	67442.9	10.2
Other customs	261	29.2	49.1	23.5
Taxes on property	9,840	58.5	155.1	-7.8
Long-lease property rights	1,245	-9.8	17.0	-14.3
Land tax	6,100	79.6	297.4	0.1
Transfer tax	2,279	112.4	115.4	-28.7
Succession tax	20	0.0	300.0	-45.1
Motor vehicle tax	196	-41.8	0.0	11.4
Taxes on services	1,949	23.4	-64.8	-52.4
Lodging tax	0			-84.1
Gambling licenses	1,764	14.8	5.7	1.4
Stamp duties	185	330.2	92.7	33.9
Turnover tax (BBO)	6,597	-2.2	3.5	1.3
Tourist tax	3,865	3.0		
Other tax & nontax rev	1,648	30.1	-37.1	-92.8
Total tax revenue	80,250	7.0	26.2	-17.6

Source: Tax Collector's Office

¹ Excluding AZV and AOV/ AWW.

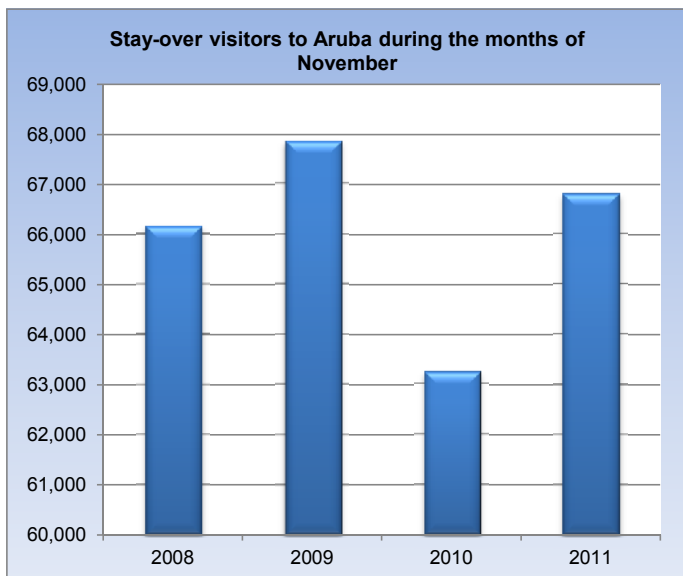
Related statistics in this bulletin

- Corresponding tables

Related statistics publications

- Economic profile
- Statistical yearbook

5 Tourism



Month	2008	2009	2010	2011
Total stay-over visitors				
August	76,614	75,220	73,034	79,687
September	55,007	55,162	58,333	63,906
October	58,955	63,252	66,985	65,227
November	66,157	67,848	63,242	66,799

Month	2008	2009	2010	2011
Stay-over visitors monthly %-change				
August	8.3	0.0	-2.9	-1.8
September	-28.2	-26.7	-20.1	-19.8
October	7.2	14.7	14.8	2.1
November	12.2	7.3	-5.6	2.4

Month	2008	2009	2010	2011
Stay-over visitors annual %-change				
August	5.6	-1.8	-2.9	9.1
September	-5.1	0.3	5.7	9.6
October	-6.2	7.3	5.9	-2.6
November	-2.5	2.6	-6.8	5.6

	Aug-11	Sep-11	Oct-11	Nov-11
Airport arrivals				
Resident	11,208	6,461	9,233	6,573
Non-resident	81,609	65,832	66,426	68,003

	Aug-11	Sep-11	Oct-11	Nov-11
Landings				
Commercial landings	1,307	1,158	1,096	1,045
Non-Commercial landings	441	483	301	349

	Aug-11	Sep-11	Oct-11	Nov-11
Cruise Tourism				
Cruise passengers	5,308	4,652	30,575	73,091

Source: Aruba Tourism Authority, I.A.S.A., Cruise Tourism Aruba

Tourism

November 2011	% Change since			
	last month	last year	YTD % change	
Total stay over visitors	66,799	2.4	5.6	5.8
USA	40,758	5.5	-0.7	-1.0
Venezuela	8,952	7.6	34.3	34.0
Colombia	1,138	-20.1	3.7	15.7
Netherlands	3,294	-15.4	-5.9	1.8
Neth. Antilles	2,238	-9.6	13.4	12.0
Canada	3,105	65.2	13.2	7.9
Other	7,314	-15.1	17.3	20.1

Source: Aruba Tourism Authority

Key points

In November 2011, the total number of stay-over visitors rose by 5.6 percent compared to November 2010, in contrast to a drop of 6.8 percent recorded in the similar period one year earlier. Compared to November 2010, the South American market increased by 24.3 percent in November 2011, particularly as a result of increases of visitors from Venezuela (+34.3%), (Argentina (+100%)), Colombia (+3.7%) and Ecuador (+56.1%). The European market rose by 7.7 percent compared to November 2010, mainly as a result of increases of visitors from Italy (+211.3%) and Sweden (+28.1%).

On the other hand, the total number of visitors from the United States dropped by 0.7 percent in November 2011, following a decrease of 8.2 percent in the previous month.

On a year to date basis, the market share of US visitors fell from 66.0 percent in 2010, to 61.8 percent in November 2011. The Venezuelan market is the second largest market, recording a market share of 12.8 percent, up from 10.1 percent in 2010.

In the January-to-November period of 2011, the total number of stay-over visitors to Aruba increased by 5.8 percent compared to the similar period of 2010.

Related statistics in this bulletin

- Corresponding tables

Related statistics publications

- Tourist profile
- Economic profile
- Statistical yearbook

Consumer Price Index

(Dec 2006=100)	Oct '10	Nov '10	Oct '11	Nov '11	YTD ¹ 2010	YTD 2011	Monthly % change	Yearly % change
Sector	in %							
Food & non-alcoholic beverages	132.0	132.9	140.6	141.4	-0.4	5.9	0.5	6.4
Alcoholic beverages & tobacco	112.5	112.2	124.5	124.3	-0.3	11.1	-0.1	10.8
Clothing & footwear	111.1	110.7	111.7	109.9	-7.4	-0.4	-1.6	-0.8
Housing	129.7	129.9	145.1	145.4	1.9	11.8	0.1	11.9
Household operation	105.4	105.4	104.8	103.4	-2.5	-2.1	-1.3	-1.9
Health	92.4	92.4	91.5	91.5	-0.5	-0.8	0.0	-0.9
Transport	106.7	108.0	116.9	116.8	-1.4	8.7	0.0	8.1
Communications	83.9	83.8	82.9	86.9	0.4	3.7	4.8	3.7
Recreation & culture	111.3	112.1	115.6	115.0	-2.1	2.2	-0.5	2.6
Education	111.0	111.4	116.0	116.1	1.7	3.9	0.1	4.2
Restaurants & hotels	115.8	115.8	119.3	119.7	-2.8	2.7	0.3	3.4
Miscellaneous goods & services	99.1	98.9	99.6	99.9	-1.3	1.1	0.3	0.9
Total Index	113.9	114.3	121.3	121.4	-0.8	6.2	0.1	6.2
Fuel Surcharge (in Afl.)	0.27	0.27	0.32	0.32	5.0	21.1	0.0	21.1
Water (in Afl.) ²	153.95	153.95	195.47	195.47	-1.6	27.0	0.0	27.0
Electricity (in Afl.) ³	308.72	308.72	363.27	363.27	3.1	17.7	0.0	17.7
Aruba Gasoline (in Afl. per ltr)	1.90	1.95	2.27	2.27	1.0	14.8	-0.2	16.1
Aruba Diesel (in Afl. per ltr)	1.63	1.70	2.04	2.06	5.1	18.7	0.6	21.0
US Gasoline (in \$ per ltr)	0.74	0.76	0.91	0.89	9.7	13.1	-1.9	18.4
US Diesel (in \$ per ltr)	0.81	0.83	1.00	1.05	14.4	22.2	4.3	26.2
Crude Oil (in \$ per barrel)⁴								
WTI - Cushing, Oklahoma	81.89	84.25	86.32	97.17	13.1	9.0	12.6	15.3
Brent, Europe	82.67	85.28	109.55	110.77	14.5	21.1	1.1	29.9

Utilities

	Oct '10	Nov '10	Oct '11	Nov '11	2010	2011	Monthly % change	Yearly % change
Electricity supplied to Elmar for distribution (in MWh)								
Total average	72,418	64,609	71,478	67,457	775,111	755,402	-5.6	4.4
Water consumption (in m3)								
Houses	479,915	511,307	500,861	488,887	6,105,841	5,697,229	-2.4	-4.4
Companies	99,632	115,214	109,429	110,540	1,222,917	1,204,733	1.0	-4.1
Hotels	198,020	222,058	231,131	223,019	2,774,059	2,641,182	-3.5	0.4
Government	14,404	15,351	17,293	17,064	204,434	197,427	-1.3	11.2
Total average	791,971	863,930	858,714	839,510	10,307,251	9,740,571	-2.2	-2.8

Foreign Trade in Merchandise (*1,000 Afl.)

	Oct '10	Nov '10	Oct '11	Nov '11	2010	2011	Monthly % change	Yearly % change
Imports of goods by commodity group								
Agriculture products	43,733	63,004	50,128	61,827	554,746	595,569	23.3	-1.9
Mineral chemical and related products	21,680	25,745	39,693	27,209	225,578	285,077	-31.5	5.7
Textiles, pearls and precious stones	21,693	35,367	26,308	39,210	187,018	217,292	49.0	10.9
Metal products, machinery and equipment	36,543	52,673	53,604	61,301	368,982	570,129	14.4	16.4
Other transportable goods	26,085	31,483	28,315	33,457	262,063	316,375	18.2	6.3
Total Import	149,735	208,271	198,048	223,004	1,598,388	1,984,442	12.6	7.1
Exports of goods by commodity group								
Agriculture products	10,440	20,440	12,406	18,962	158,747	198,291	52.8	-7.2
Mineral chemical and related products	486	536	247	132	5,098	6,474	-46.7	-75.4
Textiles, pearls and precious stones	339	561	256	1,148	8,629	22,760	347.8	104.4
Metal products, machinery and equipment	851	643	1,068	1,125	9,662	15,136	5.3	75.1
Other transportable goods	702	1,075	10,006	557	13,260	27,169	-94.4	-48.2
Total Export	12,818	23,255	23,983	21,923	195,396	269,830	-8.6	-5.7

¹⁾ YTD (Year to date) refers to the period of January 1st of the current year to the month under review.

Government Revenues (*1,000 Afl.)

	Oct '10	Nov '10	Oct '11	Nov '11	YTD ¹ 2010	YTD 2011	Monthly change	Yearly change
Taxes on income and profit	22,011	23,762	30,301	30,543	278,677	325,005	0.8	28.5
Income tax	-135	-1,722	-712	-1,797	-9,931	-2,444	-152.4	-4.4
Wage tax	16,672	19,416	18,159	17,413	209,091	210,055	-4.1	-10.3
Profit tax	4,525	5,688	12,577	14,675	74,455	112,240	16.7	158.0
Dividend tax	949	380	277	252	5,062	5,154	-9.0	-33.7
Taxes on commodities	20,919	21,422	25,156	25,808	216,758	245,338	2.6	20.5
Import duties	12,479	15,136	13,895	15,262	121,685	138,948	9.8	0.8
Excises on spirits	1,191	1,496	1,279	2,121	13,592	16,794	65.8	41.8
Excises on cigarettes	975	1,889	1,819	1,368	10,029	11,303	-24.8	-27.6
Excises on beer	1,083	2,719	2,946	2,068	21,379	22,839	-29.8	-23.9
Excises on gasoline	5,059	7	5,015	4,728	47,981	52,871	-5.7	67,442.9
Other customs	132	175	202	261	2,092	2,583	29.2	49.1
Taxes on property	2,531	3,858	6,208	9,840	76,729	70,737	58.5	155.1
Long-lease property rights (erfpachtsrechten)	631	1,064	1,381	1,245	19,483	16,693	-9.8	17.0
Land tax	1,217	1,535	3,397	6,100	23,762	23,797	79.6	297.4
Transfer tax	261	1,058	1,073	2,279	17,121	12,199	112.4	115.4
Succession tax	-1	5	20	20	308	169	0.0	300.0
Motor vehicle tax (incl. numberplates)	423	196	337	196	16,055	17,879	-41.8	0.0
Taxes on services	5,056	5,537	1,579	1,949	59,814	28,492	23.4	-64.8
Lodging tax	3,528	3,772	0	0	38,172	6,055		
Gambling licenses	1,392	1,669	1,536	1,764	20,121	20,400	14.8	5.7
Stamp duties	136	96	43	185	1,521	2,037	330.2	92.7
Turnover tax (BBO)	6,170	6,374	6,744	6,597	76,947	77,938	-2.2	3.5
Tourist tax	0	0	3,752	3,865	0	48,708	3.0	
Other tax and nontax revenues	1,828	2,618	1,267	1,648	282,030	20,237	30.1	-37.1
Total tax revenues⁵	58,515	63,571	75,007	80,250	990,955	816,455	7.0	26.2

Tourism

	Oct '10	Nov '10	Oct '11	Nov '11	YTD ¹ 2010	YTD 2011	Monthly % change	Yearly % change
Total stay over visitors	66,985	63,242	65,227	66,799	746,668	790,109	2.4	5.6
USA	42,088	41,028	38,618	40,758	493,190	488,178	5.5	-0.7
Venezuela	7,389	6,667	8,318	8,952	75,652	101,343	7.6	34.3
Colombia	1,364	1,097	1,424	1,138	12,771	14,781	-20.1	3.7
Netherlands	3,795	3,500	3,894	3,294	36,726	37,369	-15.4	-5.9
Neth. Antilles	2,485	1,973	2,476	2,238	21,183	23,719	-9.6	13.4
Canada	1,596	2,744	1,880	3,105	32,631	35,223	65.2	13.2
Other	8,268	6,233	8,617	7,314	74,515	89,496	-15.1	17.3
Airport Traffic								
Total landings	1,593	1,412	1,397	1,394	17,202	17,456	-0.2	-1.3
Commercial landings	1,264	1,196	1,096	1,045	13,298	13,537	-4.7	-12.6
Non-commercial landings	329	216	301	349	3,904	3,919	15.9	61.6
Passenger Traffic								
Total arrivals	77,749	71,604	75,659	74,576	831,121	889,824	-1.4	4.2
Arrival locals	8,227	6,250	9,233	6,573	73,988	87,917	-28.8	5.2
Arrival visitors	69,522	65,354	66,426	68,003	757,133	801,907	2.4	4.1

¹⁾ YTD (Year to date) refers to the period of January 1st of the current year to the month under review. This period is compared to the same period of the previous year.

²⁾ Based on an average per household