





### Highlights June 2011 in Review

#### Consumer Prices:

- Year over year inflation up by 4.9 percent
- Period average inflation at 1.1 percent in June 2011
- Price of gasoline down with Afl. 0.07 in June 2011
- Price of diesel down with Afl. 0.12 in June 2011
- Average world crude oil price at \$ 111.08 per barrel

#### Utilities:

- Total average water distribution down by 16.1 percent
- Average electricity distribution down by 2.0 percent

#### Foreign Trade:

- Import of goods up by 16.7 percent in June 2011
- Value of export up by 32.7 percent in June 2011

#### Government:

- Total tax revenue in June 2011 down by 79.3 percent
- Taxes on income & profit down by 30.4 percent
- Taxes on commodities up by 8.9 percent
- Taxes on property down by 19.3 percent in June 2011
- Turnover tax (BBO) up by 18.4 percent

#### Tourism:

- Total stayover visitors rose by 13.2 percent in June 2011
- South American market up by 48.0 percent

#### Passenger Traffic:

- Commercial landings up by 20.0 percent
- Arrival visitors up by 12.5 percent in June 2011

#### Population:

- Total population in the 1st Qtr. of 2011: 108,082
- 227 births during the first quarter of 2011
- 155 deaths during the first quarter of 2011

#### Business Licenses:

- 69 licenses granted in June 2011

### Monthly Economic Indicators

June 2011	% Change	
	Last Month	Last Year
<b>Consumer prices</b>		
Total index	0.0	4.9
<b>Utilities</b>		
Water consumption	-7.3	-16.1
Electricity distribution	0.8	-2.0
<b>Foreign trade</b>		
Import	3.3	16.7
Export	-27.7	32.7
<b>Government</b>		
Total tax revenue	-19.6	-79.3
<b>Tourism</b>		
Total stayover visitors	4.2	13.2
USA	-0.7	4.5
Venezuela	40.4	47.7
Colombia	143.0	38.9
Netherlands	-1.2	21.3
<b>Cruise arrivals</b>	n.a.	n.a.
<b>Airport &amp; passenger traffic</b>		
Commercial landings	14.3	20.0
Arrival visitors	6.8	12.5

Source: Central Bureau of Statistics Aruba



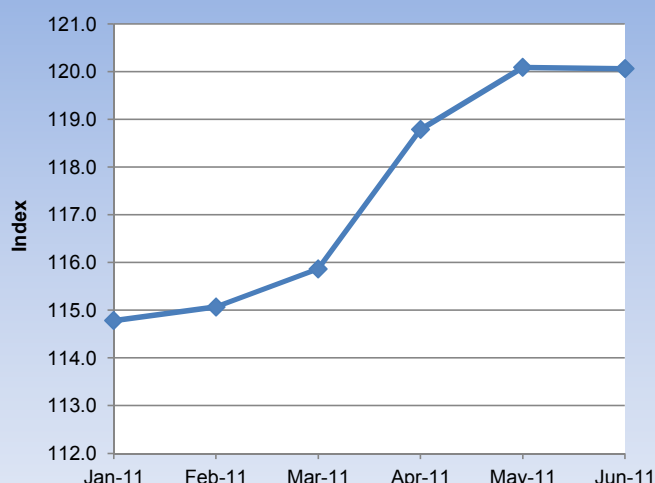
## Table of Contents

■ Consumer Price Index.....	5
■ International aspect.....	6
■ Utilities.....	7
■ Water distribution.....	8
■ Electricity distribution.....	9
■ Foreign Trade.....	10
■ Government Revenues.....	11
■ Tourism.....	12
■ Corresponding Tables	



## 1.1 Consumer Price Index

Monthly CPI - Index



Month	2008	2009	2010	2011
-------	------	------	------	------

### Consumer price index

March	112.3	109.0	114.4	115.9
April	112.9	109.3	114.8	118.8
May	114.0	109.9	115.0	120.1
June	116.0	112.5	114.5	120.1

### Consumer price index monthly %-change

March	0.7	0.6	0.3	0.7
April	0.6	0.3	0.4	2.5
May	0.9	0.5	0.2	1.1
June	1.8	2.4	-0.4	0.0

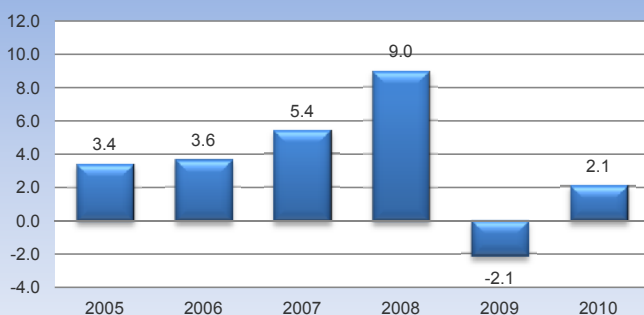
### Consumer price index annual %-change

March	9.7	-2.9	5.0	1.3
April	10.1	-3.2	5.1	3.5
May	9.8	-3.6	4.7	4.4
June	9.3	-3.0	1.8	4.9

### Consumer price index period average

March	6.9	5.7	-0.1	0.9
April	7.4	4.6	0.6	0.8
May	7.9	3.5	1.3	0.8
June	8.2	2.4	1.7	1.1

Yearly CPI - Period average



### Key points

At the end of June 2011, the twelve-month average rate of inflation was at 1.1 percent, compared to 1.7 percent at the end of June 2010. On a monthly basis, the total consumer price index remained unchanged in June 2010. In June 2011, price increases has been recorded for Clothing & footwear (+1.9%), Food & non-alcoholic beverages (+0.8%), Education (+0.3%), Alcoholic beverages & tobacco (+0.2%), Housing (+0.1%) and Miscellaneous goods & services (+0.1%). On the other hand, price decreases were recorded for Transport (-1.2%), Health (-0.4%), Recreation & culture (-0.3%), Communications (-0.2%), Household operation (-0.2%) and Restaurants & hotels (-0.1%).

On a yearly basis, consumer prices increased by 4.9 percent in June 2011. Major price increases were recorded in the following sectors:

1. *Transport*; In June 2011, prices in the Transport sector rose by 9.8 percent compared to June 2010. Higher prices were recorded for Operation of personal transport equipment (+19.0%) and Transport services (+8.4%), while Purchase of vehicles fell with 1.2 percent.

2. *Housing*; Average prices in the Housing sector increased by 6.5 percent compared to June 2010. Main price increases were recorded for Electricity, gas & other fuels (+9.5%), Water supply & misc. services related to dwellings (+5.7%), Actual rentals for housing (+5.6%) and Maintenance & repair of dwellings (+2.7%).

3. *Food & non-alcoholic beverages*; Prices in this sector increased by 4.2 percent in June 2011. Average prices of Food and Alcoholic beverages increased by 4.3 and 3.7 percent respectively, compared to June 2010.

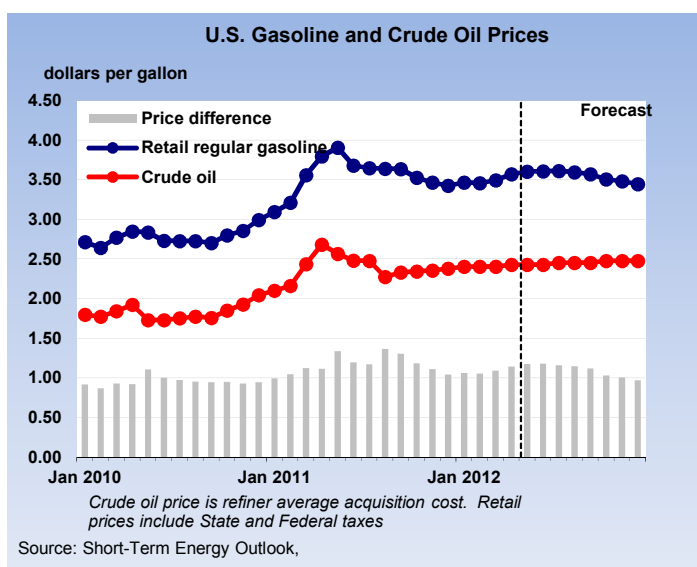
### Related statistics in this bulletin

- 1.2 International aspects
- 2.1 Utilities
- Corresponding tables

### Related statistics publications

- Consumer price index
- Economic profile
- Statistical yearbook

## 1.2 International aspects



Month	Mar-11	Apr-11	May-11	Jun-11
<b>Consumer price index monthly %-change</b>				
United States	1.0	0.6	0.5	-0.1
Netherlands	1.2	0.5	0.1	-0.5
Curacao	0.2	-0.3	0.2	0.3
Aruba	0.7	2.5	1.1	0.0

### Gasoline, diesel and world crude oil prices

#### United States

Gasoline (\$/gal)	3.56	3.80	3.91	3.68
Diesel (\$/gal)	3.91	4.06	4.05	3.93
Crude oil (\$/barrel)	109.06	116.88	112.77	111.08

### Export price monthly %-change

USA	1.5	0.8	0.4	0.2
-----	-----	-----	-----	-----

Month	Period	Tourists
-------	--------	----------

### Latest tourist arrivals

Aruba	Jan-Jul	515,468
Bahamas	Jan-Apr	467,603
Barbados	Jan-Jul	347,112
Belize	Jan-Jun	140,616
Bermuda	Jan-Jun	111,286
British Virgin Islands.	Jan-May	175,131
Cayman Islands	Jan-Jun	175,046
Cuba	Jan-Jun	1,537,865
Curacao	Jan-Jun	185,744
Dominican Republic	Jan-Jul	2,712,307
Jamaica	Jan-Apr	732,748
Martinique	Jan-May	223,947
Puerto Rico	Jan-Apr	556,275
St. Maarten	Jan-Mar	134,025
Saint Lucia	Jan-Apr	111,850
US Virgin Islands	Jan-Jun	375,015

Source: Energy Information Administration, OECD, Bureau of labor statistics, Caribbean Tourism Organization

### Key points

Economic growth assumptions (by the EIA) have been lowered substantially compared to earlier forecasts. With weaker economic growth and lower petroleum consumption growth, the US average refiner acquisition cost of crude oil is expected to rise from an average of \$100 per barrel in 2011 to \$103 per barrel in 2012, compared to an increase \$107 per barrel in 2012 in the previous forecast.

EIA forecasts that the annual average regular-grade gasoline retail prices, which averaged \$2.78 per gallon in 2010, will increase to \$3.56 per gallon in 2011 and average \$3.54 per gallon in 2012. The increase in retail prices reflects not only the higher cost of crude oil but also changes in average U.S. refinery gasoline margin (the difference between refinery wholesale gasoline prices and the average cost of crude oil) from \$0.34 per gallon in 2010, to \$0.50 per gallon in 2011 and \$0.43 per gallon in 2012.

EIA expects that on-highway diesel fuel retail prices, which averaged \$2.99 per gallon in 2010, will average \$3.85 per barrel in 2011 and \$3.87 per gallon in 2012.

### Related statistics in this bulletin

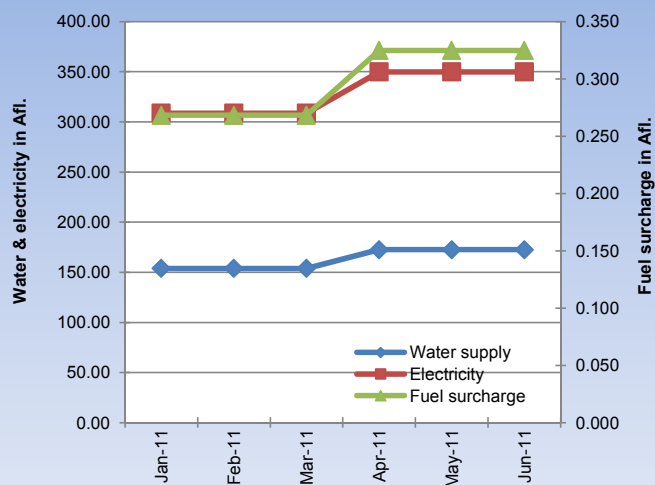
- 1.1 Consumer price index
- 2.1 Utilities
- 5 Tourism
- Corresponding tables

### Related statistics publications

- Consumer price index
- Economic profile



## 2.1 Utilities



Mar-11 Apr-11 May-11 Jun-11

### Utility prices

Electricity	308.72	349.78	349.78	349.78
Gasoline	2.17	2.36	2.52	2.45
Water	153.95	172.60	172.60	172.60
Diesel	1.98	2.10	2.18	2.06
Fuel surcharge	0.268	0.325	0.325	0.325

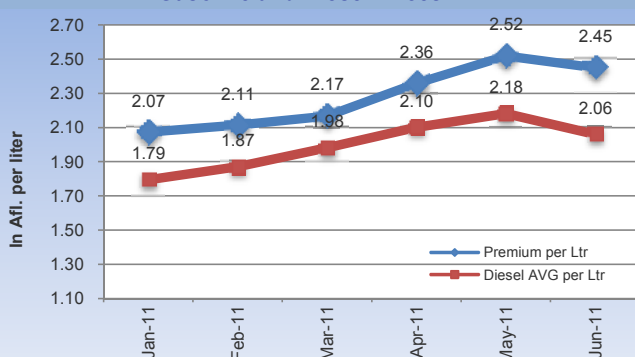
### Utility prices monthly %-change

Electricity	0.0	13.3	0.0	0.0
Gasoline	2.5	8.8	6.8	-2.7
Water	0.0	12.1	0.0	0.0
Diesel	5.9	6.1	3.8	-5.5
Fuel surcharge	0.0	21.1	0.0	0.0

### Utility prices annual %-change

Electricity	-3.1	9.8	9.8	9.8
Gasoline	14.2	18.4	23.7	26.6
Water	-5.1	6.4	6.4	6.4
Diesel	25.4	28.1	28.1	27.0
Fuel surcharge	-4.9	15.2	15.2	15.2

Gasoline and Diesel Prices in Afl.



CPI USA: seasonally unadjusted

<sup>1</sup> Based on an average electricity consumption of 725.5 kWh per month.

<sup>2</sup> Based on an average per household

### Key points

In June 2011, average price of water and electricity remained unchanged. The price of gasoline decreased by Afl. 0.07 in June 2011, reaching Afl. 2.45 per liter. In addition, the price of diesel fell with Afl. 0.12 compared to the previous month, reaching an average price of Afl. 2.06 per liter. Average world crude oil prices in June 2011 reached \$ 111.08, down from \$ 112.77 recorded in May 2011.

### Prices of utilities in Aruba during July 2011

	Price change	Impact on CPI
Electricity <sup>1</sup>	0.0%	0.00
Gasoline (premium)	-4.1%	-0.28
Water <sup>2</sup>	0.0%	0.00
Diesel	0.3%	0.00
Rent	0.5%	0.04
<b>Total impact</b>		<b>-0.24</b>

Source: Central Bureau of Statistics Aruba

Disregarding any other important fluctuations in prices over the month of July 2011, price movement of gasoline, diesel and rent during the month of July 2011 will affect to the consumer price index of July 2011 by -0.24.

### Related statistics in this bulletin

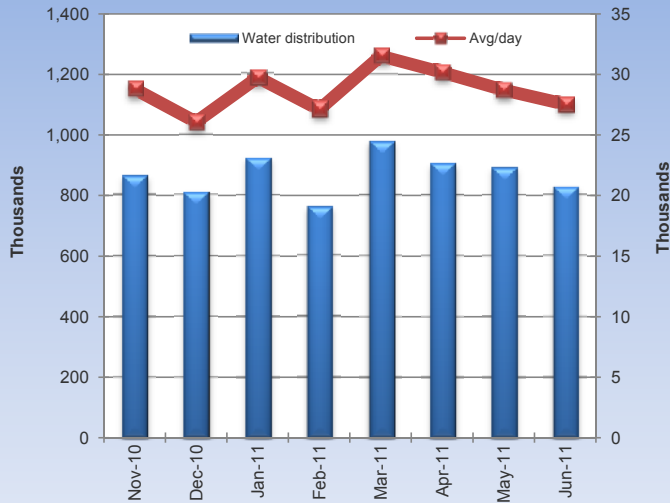
- 2.2 Water and electricity distribution
- Corresponding tables

### Related statistics publications

- Consumer price index
- Economic profile
- Statistical yearbook

## 2.2 Water distribution

Water distribution per month (in m3)



Month	2008	2009	2010	2011
-------	------	------	------	------

### Average water distribution (m3)

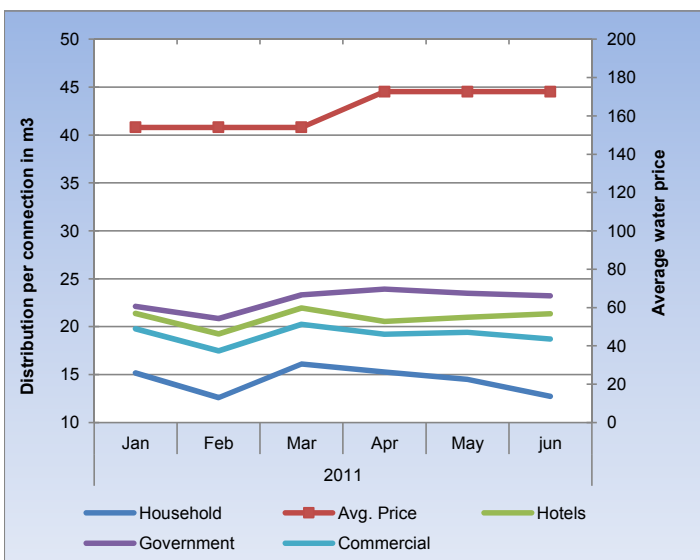
March	1,046,489	956,526	1,065,728	977,770
April	942,040	965,801	830,704	905,173
May	1,059,619	989,731	1,021,219	890,700
June	984,413	1,020,871	984,127	825,874

### Average water distribution monthly %-change

March	12.3	15.7	12.4	28.7
April	-10.0	1.0	-22.1	-7.4
May	12.5	2.5	22.9	-1.6
June	-7.1	3.1	-3.6	-7.3

### Average water distribution annual %-change

March	2.9	-8.6	11.4	-8.3
April	-2.6	2.5	-14.0	9.0
May	1.2	-6.6	3.2	-12.8
June	-0.2	3.7	-3.6	-16.1



Hotels (x100 m3)

## Key points

In June 2011, the average water distribution (houses, companies, hotels, government) decreased by 16.1 percent compared to June 2010. Water usage decreases were recorded by all sectors, particularly, Houses (-22.8%), Hotels (-3.3%), Companies (-11.0%) and Government (-11.6%). During the first half of 2011, total water distribution is running 8.6 percent below the level recorded in the similar period of 2010.

### Average water distribution (in m<sup>3</sup>)\*

June 2011		% Change since		YTD % change
		last month	last year	
Houses	454,764	-12.4	-22.8	-9.9
Companies	103,013	-7.8	-11.0	-2.0
Hotels	249,968	3.6	-3.3	-8.5
Government	18,129	-1.6	-11.6	-9.7
<b>Total</b>	<b>825,874</b>	<b>-7.3</b>	<b>-16.1</b>	<b>-8.6</b>

### Average water usage per connection (in m<sup>3</sup>)

Houses	12.7	-12.1	-23.5	-11.4
Companies	43.6	-7.3	-10.4	-2.8
Hotels (x100)	56.8	3.6	-3.3	-8.5
Government	66.2	-2.0	-13.9	-9.9

Source: WEB Aruba N.V., Central Bureau of Statistics Aruba

\* Calculation of drink water distribution in Aruba (in m3) is based on an average water distribution per month, excluding the distribution to Valero and vessels.

On a monthly basis, the total average water usage fell with 7.3 percent in June 2011. With the exception of Hotels (+3.6%), water usage decreases has been recorded by Households (-12.4%), Companies (-7.8%) and Government (-1.6%).

## Related statistics in this bulletin

- 2.3 Electricity distribution
- Corresponding tables

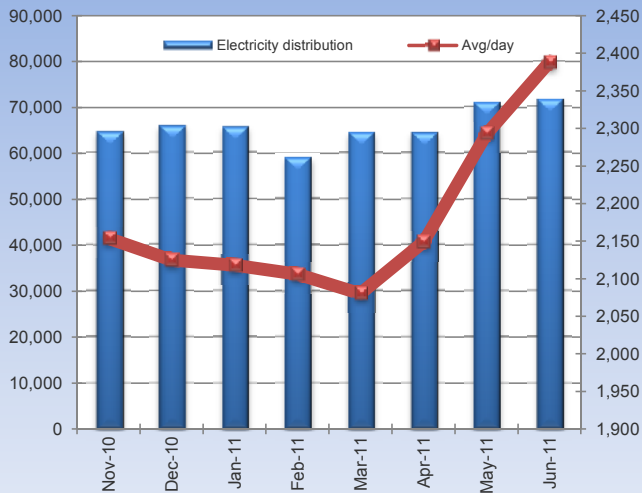
## Related statistics publications

- Economic profile
- Statistical yearbook



## 2.3 Electricity distribution

Electricity distribution (in MWh)



Month	2008	2009	2010	2011
-------	------	------	------	------

### Electricity distribution (MWh)

March	64,731	63,037	71,051	64,484
April	65,879	65,267	69,741	64,463
May	68,820	68,943	73,399	71,077
June	68,178	68,924	73,140	71,641

### Electricity distribution monthly %-change

March	5.5	10.5	16.3	9.4
April	1.8	3.5	-1.8	0.0
May	4.5	5.6	5.2	10.3
June	-0.9	0.0	-0.4	0.8

### Electricity distribution annual %-change

March	2.6	-2.6	12.7	-9.2
April	-1.8	-0.9	6.9	-7.6
May	-1.5	0.2	6.5	-3.2
June	0.8	1.1	6.1	-2.0

### Key points

In June 2011, electricity (in MWh) supplied to Elmar for distribution declined by 2.0 percent compared to June 2010, in contrast to an increase of 6.1 percent recorded in the similar period one year earlier. During the first six months of 2011, electricity distribution fell with 4.8 percent compared to the similar period of 2010.

### Electricity Consumption (MWh)

	Apr-11	May-11	Jun-11
Household	21,105	25,229	27,670
Per connection	548.0	653.5	716.8
Commercial	12,213	13,279	12,193
Large users	25,324	27,294	27,114
Streetlights	354	354	354
Signage	97	97	101
Churches, schools, etc.	367	418	397
<b>Total</b>	<b>59,461</b>	<b>66,671</b>	<b>67,829</b>

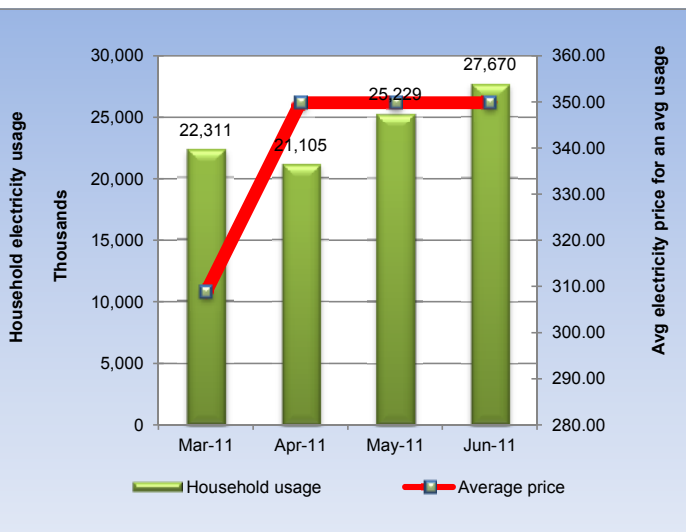
On a monthly basis, the total electricity usage (as reported by the ELMAR N.V.) increased by 1.7 percent in June 2011. The main usage increases were recorded by Households (+9.7%). On the other hand, usage in the Commercial sector, Large users and Churches, schools, etc., declined by 8.2, 0.7 and 4.8 percent respectively, compared to the previous month.

### Related statistics in this bulletin

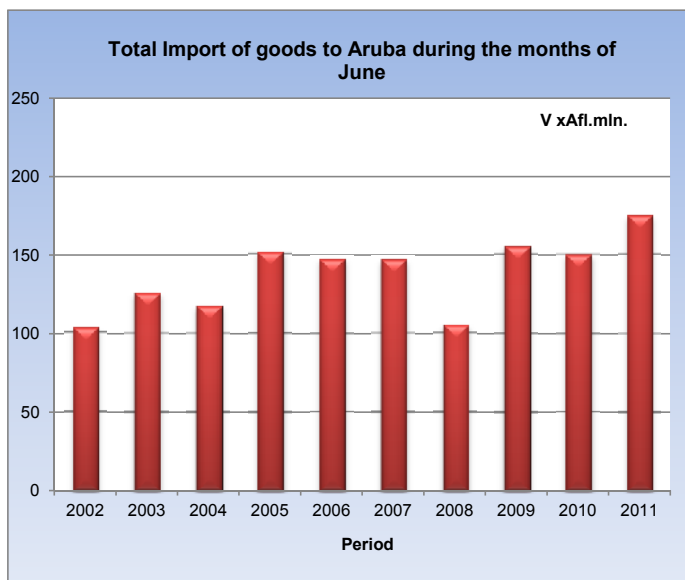
- 2.2 Water distribution
- Corresponding tables

### Related statistics publications

- Economic profile
- Statistical yearbook

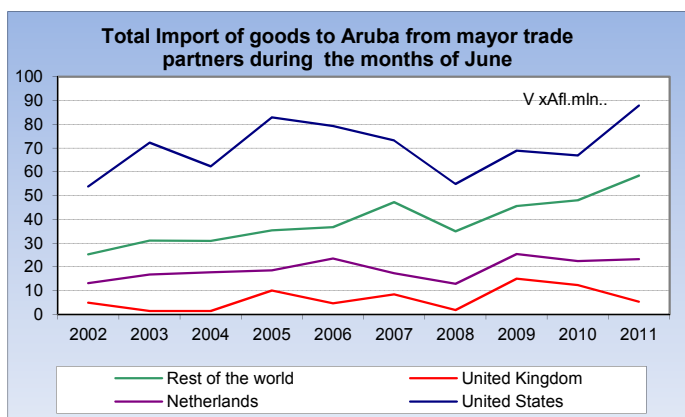


### 3 Foreign trade



June 2011	Vx1,000 Afl.	Monthly % Ch	Yearly % Ch	YTD % Ch
<b>Total import of goods to Aruba by commodity group</b>				
1. Agriculture products	57,583	-1.8	4.8	4.2
2. Mineral chemical and related products	28,935	8.8	37.4	25.4
3. Textiles, pearls and precious stones	16,659	10.3	14.7	17.4
4. Metal products, machinery and equipment	44,357	3.0	20.9	71.7
5. Other transportable goods	27,401	5.7	20.5	23.3
<b>Total Import</b>	<b>174,935</b>	<b>3.3</b>	<b>16.7</b>	<b>26.5</b>

<b>Total export of goods to Aruba by commodity group</b>				
1. Agriculture products	19,280	-19.1	35.6	30.1
2. Mineral chemical and related products	1,277	32.6	462.2	1.5
3. Textiles, pearls and precious stones	229	-95.6	-51.9	135.7
4. Metal products, machinery and equipment	860	-58.3	-25.0	34.7
5. Other transportable goods	2,332	113.7	16.5	37.6
<b>Total Export</b>	<b>23,978</b>	<b>-27.7</b>	<b>32.7</b>	<b>34.8</b>



Source: Customs Aruba, Central Bureau of Statistics Aruba

#### Key points

Total import of merchandise expanded by 16.7 percent in June 2011, when compared to the same month of 2010. Import increases were recorded for all sectors, particularly, Mineral, chemical & related products (+37.4%), Metal products, machinery & equipment (+20.9%), Other transportable goods (+20.5%), Agriculture products (+4.8%) and Textiles, pearls & precious stones (+14.7%). On a monthly basis, total import of merchandise increased by 3.3 percent in June 2011. In the January-to-June period of 2011, total imports increased by 26.5 percent compared to the similar period of 2010.

In June 2011, total exports increased by 32.7 percent compared to June 2010, following a 4.9 percent growth recorded in the similar period one year earlier. The main increases were registered for the export of Agriculture products (+35.6%), Mineral, chemical & related products (+462.2%) and Other transportable goods (+16.5%). During the first six months of 2011, total exports expanded by 34.8 percent compared to the similar period of 2010.

#### Related statistics in this bulletin

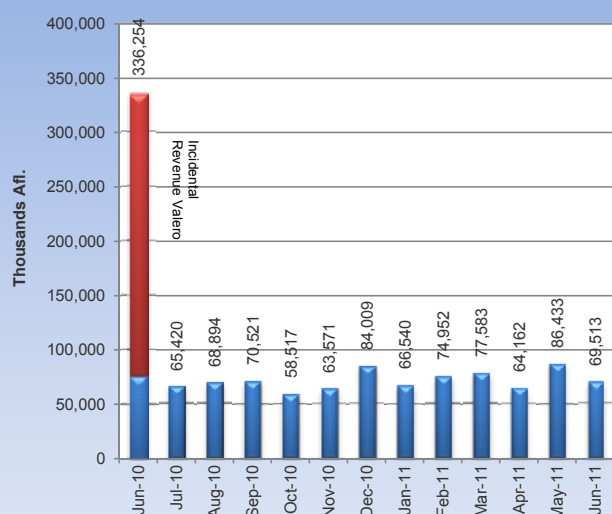
- Corresponding tables

#### Related statistics publications

- Foreign Trade Statistics
- Economic profile
- Statistical yearbook

## 4 Government

Monthly Tax Revenue



### Key points

In June 2011, the total government tax revenue decreased by 79.3 percent compared to June 2010. This drop is mainly caused by extraordinary revenues (BBO, Wage tax and dividend tax) which was collected in June of 2010. Taxes on income & profit fell with 30.4 percent, particularly as a result of decreases in Wage tax (-32.7%), Profit tax (-28.4%) and Dividend tax (-86.2%). In addition, the Land tax dropped by 26.6 percent in June 2011. On the other hand, Tourist tax, Excises on beer and Turnover tax increased by 37.3, 67.0 and 18.4 percent respectively, compared to June 2010. During the first half of 2011, total tax revenues is running 33.9 percent below the level recorded in the similar period of 2010.

Tax Revenues<sup>1</sup>

June 2011	(x1,000 Afi.)	% Change since		
		last month	last year	YTD % change
<b>Taxes on income &amp; profit</b>	<b>22,913</b>	<b>-40.4</b>	<b>-30.4</b>	<b>16.4</b>
Income tax	-873	-131.2	68.6	137.8
Wage tax	15,850	-12.6	-32.7	1.9
Profit tax	7,759	-54.8	-28.4	45.1
Dividend tax	177	-49.7	-86.2	-18.9
<b>Taxes on commodities</b>	<b>23,010</b>	<b>-18.7</b>	<b>8.9</b>	<b>11.8</b>
Import duties	12,559	-2.7	-0.1	18.0
Excises on spirits	1,302	-40.1	29.2	18.1
Excises on cigarettes	1,305	16.7	36.5	-0.8
Excises on beer	2,810	25.7	67.0	7.7
Excises on gasoline	4,803	-50.3	2.9	0.6
Other customs	231	20.9	-2.1	21.8
<b>Taxes on property</b>	<b>8,081</b>	<b>193.6</b>	<b>-19.3</b>	<b>-29.0</b>
Long-lease property rights	1,920	555.3	-31.2	-71.6
Land tax	3,347	270.7	-26.6	-24.1
Transfer tax	1,493	27.4	-13.8	-36.4
Succession tax	7	-22.2	-63.2	-69.7
Motor vehicle tax	1,314	250.4	43.6	17.0
<b>Taxes on services</b>	<b>2,200</b>	<b>-20.3</b>	<b>-53.6</b>	<b>-42.8</b>
Lodging tax	13	-95.3	-99.6	-71.5
Gambling licenses	1,572	-13.7	-6.4	-3.1
Stamp duties	615	-6.7	508.9	67.2
<b>Turnover tax (BBO)</b>	<b>6,868</b>	<b>1.1</b>	<b>18.4</b>	<b>-4.7</b>
<b>Tourist tax</b>	<b>4,054</b>	<b>-20.6</b>		
<b>Other tax &amp; nontax rev</b>	<b>2,387</b>	<b>4.7</b>	<b>-99.1</b>	<b>-95.7</b>
<b>Total tax revenue</b>	<b>69,513</b>	<b>-19.6</b>	<b>-79.3</b>	<b>-33.9</b>

Source: Tax Collector's Office

<sup>1</sup> Excluding AZV and AOV/ AWW.

### Related statistics in this bulletin

- Corresponding tables

### Related statistics publications

- Economic profile
- Statistical yearbook

Month	2008	2009	2010	2011
-------	------	------	------	------

#### Total tax revenues (x 1,000 Afi.)

March	70,019	72,421	64,732	77,583
April	77,011	78,869	59,157	64,162
May	75,578	65,066	68,532	86,433
June	78,533	86,211	336,254	69,513

#### Total tax revenue monthly %-change

March	-20.3	-5.2	1.4	3.5
April	10.0	8.9	-8.6	-17.3
May	-1.9	-17.5	15.8	34.7
June	3.9	32.5	390.7	-19.6

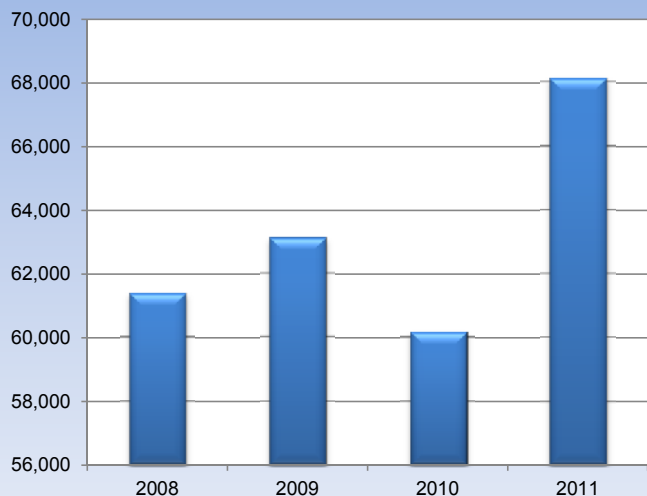
#### Total tax revenue annual %-change

March	n.a.	3.4	-10.6	19.9
April	3.1	2.4	-25.0	8.5
May	-3.7	-13.9	5.3	26.1
June	10.1	9.8	290.0	-79.3

	Mar-11	Apr-11	May-11	Jun-11
(x 1,000 Afi.)				
AOV / AWW	15,276	18,863	17,505	12,971
AZV	17,255	21,248	19,639	16,980
Total Social Contr.	32,531	40,111	37,144	29,951

## 5 Tourism

Stay-over visitors to Aruba during the months of June



Month	2008	2009	2010	2011
<b>Total stay-over visitors</b>				
March	81,205	67,456	77,204	77,184
April	69,889	71,621	69,157	79,717
May	63,612	61,479	64,383	65,380
June	61,370	63,117	60,173	68,136

### Stay-over visitors monthly %-change

March	11.2	0.5	14.1	12.0
April	-13.9	6.2	-10.4	3.3
May	-9.0	-14.2	-6.9	-18.0
June	-3.5	2.7	-6.5	4.2

### Stay-over visitors annual %-change

March	19.1	-16.9	14.5	0.0
April	3.0	2.5	-3.4	15.3
May	22.8	-3.4	4.7	1.5
June	4.0	2.8	-4.7	13.2

### Mar-11 Apr-11 May-11 Jun-11

#### Arrivals

Resident	5,477	5,528	10,987	7,328
Non-resident	77,851	80,238	64,237	68,612

#### Landings

Commercial landings	1,320	1,379	1,149	1,313
Non-Commercial landings	401	524	205	205

#### Cruise Tourism

Cruise passengers	110,363	55,522	15,415	n.a.
-------------------	---------	--------	--------	------

Source: Aruba Tourism Authority, I.A.S.A., Cruise Tourism Aruba

#### Tourism

June 2011	% Change since			YTD % change
	last month	last year		
<b>Total stay over visitors</b>	<b>68,136</b>	<b>4.2</b>	<b>13.2</b>	<b>6.0</b>
USA	43,600	-0.7	4.5	-1.0
Venezuela	7,246	40.4	47.7	38.7
Colombia	2,471	143.0	38.9	31.8
Netherlands	3,006	-1.2	21.3	4.7
Neth. Antilles	2,629	49.0	61.5	13.3
Canada	1,381	-48.0	-27.8	14.7
Other	7,803	-0.4	36.0	23.9

Source: Aruba Tourism Authority

#### Key points

In June 2011, the total number of stay-over visitors rose by 13.2 percent compared to June 2010, in contrast to a drop of 4.7 percent recorded in the similar period one year earlier. The South American market continued to show a positive growth. The Venezuelan and the Colombian market increased by 47.7 and 38.9 percent respectively, compared to June 2010. Stay-over visitors from Brazil and Argentina increased by 27.3 and 69.9 percent respectively, compared to June 2010.

Compared to June 2010, stay-over visitors from the United States rose by 4.5 percent compared to June 2010. On the other hand, visitors from Canada fell with 27.8 percent in June 2011, when compared to June 2010.

During the first six months of 2011, the total number of stay-over visitors to Aruba increased by 6.0 percent compared to the similar period of 2010.

During the first half 2011, the market share of US visitors was at 64.0 percent, down from 69.3 percent in 2010. The Venezuelan market is the second largest market, with a market share of 10.6 percent, up from 8.2 percent in 2010. The Dutch market recorded a market share of 4.4 percent in the first half of 2011, up from 4.1 percent in 2010.

#### Related statistics in this bulletin

- Corresponding tables

#### Related statistics publications

- Tourist profile
- Economic profile
- Statistical yearbook

## Consumer Price Index

(Dec 2006=100)

Sector	May '10	Jun '10	May '11	Jun '11	YTD <sup>1</sup> 2010 in %	YTD 2011	Monthly % change	Yearly % change
Food & non-alcoholic beverages	132.3	131.7	136.2	137.3	-1.3	2.8	0.8	4.2
Alcoholic beverages & tobacco	111.4	111.4	124.0	124.3	-1.0	11.1	0.2	11.6
Clothing & footwear	111.2	111.2	109.1	111.2	-7.0	0.8	1.9	0.0
Housing	131.3	131.5	139.8	139.9	3.2	7.6	0.1	6.5
Household operation	105.7	105.3	106.2	106.0	-2.6	0.3	-0.2	0.7
Health	92.6	92.5	91.7	91.3	-0.4	-1.0	-0.4	-1.3
Transport	109.8	107.6	119.6	118.2	-1.8	10.0	-1.2	9.8
Communications	83.1	83.1	87.7	87.5	-0.3	4.5	-0.2	5.3
Recreation & culture	112.6	112.3	115.7	115.4	-1.9	2.6	-0.3	2.8
Education	110.0	110.1	113.3	113.7	0.5	1.7	0.3	3.2
Restaurants & hotels	115.9	115.9	117.6	117.5	-2.6	0.8	-0.1	1.4
Miscellaneous goods & services	99.0	99.0	99.5	99.6	-1.3	0.8	0.1	0.6
<b>Total Index</b>	<b>115.0</b>	<b>114.5</b>	<b>120.1</b>	<b>120.1</b>	<b>-0.6</b>	<b>5.0</b>	<b>0.0</b>	<b>4.9</b>
Fuel Surcharge (in Afl.)	0.28	0.28	0.32	0.32	10.3	21.1	0.0	15.2
Water (in Afl.) <sup>2</sup>	162.26	162.26	172.60	172.60	3.8	12.1	0.0	6.4
Electricity (in Afl.) <sup>3</sup>	318.66	318.66	349.78	349.78	6.4	13.3	0.0	9.8
Aruba Gasoline (in Afl. per ltr)	2.04	1.94	2.52	2.45	0.2	24.1	-2.7	26.6
Aruba Diesel (in Afl. per ltr)	1.70	1.62	2.18	2.06	0.2	18.9	-5.5	27.0
US Gasoline (in \$ per ltr)	0.75	0.72	1.03	0.97	4.8	23.0	-5.8	34.7
US Diesel (in \$ per ltr)	0.81	0.78	1.07	1.04	7.4	21.3	-2.8	33.4
Crude Oil (in \$)	76.74	72.09	112.77	111.08	-1.7	27.4	-1.5	54.1

## Utilities

	May '10	Jun '10	May '11	Jun '11	2010	2011	Monthly % change	Yearly % change
<b>Electricity supplied to Elmar for distribution (in MWh)</b>								
Total average	73,399	73,140	71,077	71,641	416,406	396,283	0.8	-2.0
<b>Water consumption (in m3)</b>								
Houses	611,606	589,252	519,118	454,764	3,424,190	3,085,948	-12.4	-22.8
Companies	117,813	115,782	111,773	103,013	664,318	651,087	-7.8	-11.0
Hotels	271,142	258,586	241,377	249,968	1,574,866	1,440,798	3.6	-3.3
Government	20,658	20,508	18,432	18,129	114,540	103,437	-1.6	-11.6
<b>Total average</b>	<b>1,021,219</b>	<b>984,127</b>	<b>890,700</b>	<b>825,874</b>	<b>5,777,913</b>	<b>5,281,271</b>	<b>-7.3</b>	<b>-16.1</b>

## Foreign Trade in Merchandise (\*1,000 Afl.)

	May '10	Jun '10	May '11	Jun '11	2010	2011	Monthly % change	Yearly % change
<b>Imports of goods by commodity group</b>								
Agriculture products	51,516	54,920	58,650	57,583	311,097	324,099	-1.8	4.8
Mineral chemical and related products	18,076	21,055	26,602	28,935	114,918	144,140	8.8	37.4
Textiles, pearls and precious stones	11,667	14,527	15,106	16,659	88,977	104,438	10.3	14.7
Metal products, machinery and equipment	28,230	36,701	43,072	44,357	183,069	314,370	3.0	20.9
Other transportable goods	22,591	22,742	25,920	27,401	125,358	154,554	5.7	20.5
<b>Total Import</b>	<b>132,080</b>	<b>149,944</b>	<b>169,351</b>	<b>174,935</b>	<b>823,418</b>	<b>1,041,602</b>	<b>3.3</b>	<b>16.7</b>
<b>Exports of goods by commodity group</b>								
Agriculture products	9,957	14,214	23,838	19,280	88,846	115,585	-19.1	35.6
Mineral chemical and related products	1,446	227	962	1,277	3,233	3,282	32.6	462.2
Textiles, pearls and precious stones	534	477	5,220	229	5,096	12,013	-95.6	-51.9
Metal products, machinery and equipment	456	1,147	2,062	860	5,568	7,502	-58.3	-25.0
Other transportable goods	469	2,002	1,091	2,332	5,914	8,137	113.7	16.5
<b>Total Export</b>	<b>12,861</b>	<b>18,067</b>	<b>33,174</b>	<b>23,978</b>	<b>108,658</b>	<b>146,518</b>	<b>-27.7</b>	<b>32.7</b>

<sup>1)</sup> YTD (Year to date) refers to the period of January 1st of the current year to the month under review.

<sup>2)</sup> Based on an average per household

<sup>3)</sup> Based on an average of 725.5 kWh

## Government Revenues (\*1,000 Afl.)

	May '10	Jun '10	May '11	Jun '11	YTD <sup>1</sup> 2010	YTD 2011	Monthly change	Yearly change
<b>Taxes on income and profit</b>	<b>27,242</b>	<b>32,912</b>	<b>38,454</b>	<b>22,913</b>	<b>151,030</b>	<b>175,802</b>	<b>-40.4</b>	<b>-30.4</b>
Income tax	-874	-2,776	2,800	-873	-4,631	1,751	-131.2	68.6
Wage tax	17,034	23,562	18,138	15,850	115,355	117,545	-12.6	-32.7
Profit tax	9,920	10,839	17,164	7,759	37,202	53,989	-54.8	-28.4
Dividend tax	1,162	1,287	352	177	3,104	2,517	-49.7	-86.2
<b>Taxes on commodities</b>	<b>19,411</b>	<b>21,125</b>	<b>28,290</b>	<b>23,010</b>	<b>114,616</b>	<b>128,163</b>	<b>-18.7</b>	<b>8.9</b>
Import duties	10,056	12,575	12,912	12,559	60,440	71,342	-2.7	-0.1
Excises on spirits	1,390	1,008	2,172	1,302	7,344	8,675	-40.1	29.2
Excises on cigarettes	865	956	1,118	1,305	5,163	5,122	16.7	36.5
Excises on beer	2,186	1,683	2,236	2,810	11,837	12,745	25.7	67.0
Excises on gasoline	4,717	4,667	9,661	4,803	28,605	28,784	-50.3	2.9
Other customs	197	236	191	231	1,227	1,495	20.9	-2.1
<b>Taxes on property</b>	<b>8,518</b>	<b>10,014</b>	<b>2,752</b>	<b>8,081</b>	<b>45,037</b>	<b>31,981</b>	<b>193.6</b>	<b>-19.3</b>
Long-lease property rights (erfpachtsrechten)	4,558	2,791	293	1,920	13,463	3,819	555.3	-31.2
Land tax	2,080	4,557	903	3,347	9,840	7,470	270.7	-26.6
Transfer tax	1,445	1,732	1,172	1,493	8,444	5,371	27.4	-13.8
Succession tax	99	19	9	7	264	80	-22.2	-63.2
Motor vehicle tax (incl. numberplates)	336	915	375	1,314	13,026	15,241	250.4	43.6
<b>Taxes on services</b>	<b>5,400</b>	<b>4,742</b>	<b>2,759</b>	<b>2,200</b>	<b>34,960</b>	<b>19,998</b>	<b>-20.3</b>	<b>-53.6</b>
Lodging tax	3,029	2,962	278	13	21,268	6,055	-95.3	-99.6
Gambling licenses	1,807	1,679	1,822	1,572	12,735	12,343	-13.7	-6.4
Stamp duties	564	101	659	615	957	1,600	-6.7	508.9
<b>Turnover tax (BBO)</b>	<b>5,653</b>	<b>5,801</b>	<b>6,796</b>	<b>6,868</b>	<b>45,713</b>	<b>43,567</b>	<b>1.1</b>	<b>18.4</b>
<b>Tourist tax</b>	<b>0</b>	<b>0</b>	<b>5,103</b>	<b>4,054</b>	<b>0</b>	<b>28,032</b>	<b>-20.6</b>	
<b>Other tax and nontax revenues</b>	<b>2,308</b>	<b>261,660</b>	<b>2,279</b>	<b>2,387</b>	<b>272,656</b>	<b>11,639</b>	<b>4.7</b>	<b>-99.1</b>
<b>Total tax revenues<sup>4</sup></b>	<b>68,532</b>	<b>336,254</b>	<b>86,433</b>	<b>69,513</b>	<b>664,012</b>	<b>439,182</b>	<b>-19.6</b>	<b>-79.3</b>

## Tourism

	May '10	Jun '10	May '11	Jun '11	YTD <sup>1</sup> 2010	YTD 2011	Monthly % change	Yearly % change
<b>Total stay over visitors</b>	<b>64,383</b>	<b>60,173</b>	<b>65,380</b>	<b>68,136</b>	<b>409,829</b>	<b>434,287</b>	<b>4.2</b>	<b>13.2</b>
USA	44,945	41,731	43,906	43,600	288,167	285,189	-0.7	4.5
Venezuela	3,976	4,905	5,160	7,246	30,342	42,070	40.4	47.7
Colombia	851	1,779	1,017	2,471	6,319	8,330	143.0	38.9
Netherlands	3,639	2,479	3,042	3,006	18,746	19,635	-1.2	21.3
Neth. Antilles	1,950	1,628	1,764	2,629	9,630	10,915	49.0	61.5
Canada	2,690	1,914	2,655	1,381	21,948	25,170	-48.0	-27.8
Other	6,332	5,737	7,836	7,803	34,677	42,978	-0.4	36.0
<b>Airport Traffic</b>								
<b>Total landings</b>	<b>1,424</b>	<b>1,372</b>	<b>1,354</b>	<b>1,518</b>	<b>9,468</b>	<b>9,677</b>	<b>12.1</b>	<b>10.6</b>
Commercial landings	1,176	1,094	1,149	1,313	7,189	7,629	14.3	20.0
Non-commercial landings	248	278	205	205	2,279	2,048	0.0	-26.3
<b>Passenger Traffic</b>								
<b>Total arrivals</b>	<b>72,021</b>	<b>66,386</b>	<b>75,224</b>	<b>75,940</b>	<b>448,693</b>	<b>480,924</b>	<b>1.0</b>	<b>14.4</b>
Arrival locals	6,916	5,411	10,987	7,328	34,022	43,809	-33.3	35.4
Arrival visitors	65,105	60,975	64,237	68,612	414,671	437,115	6.8	12.5

<sup>1)</sup> YTD (Year to date) refers to the period of January 1st of the current year to the month under review. This period is compared to the same period of the previous year.

<sup>4)</sup> AZV and AOV/AWW are not included.