





### Highlights February 2011 in Review

#### Consumer Prices:

- Year over year inflation up by 0.8 percent
- Period average inflation at 1.2 percent in February 2011
- Price of gasoline up with Afl. 0.04 in February 2011
- Price of diesel up with Afl. 0.08 in February 2011
- Average world crude oil price at \$ 97.00 per barrel

#### Utilities:

- Total average water distribution down by 19.9 percent
- Average electricity distribution down by 3.5 percent

#### Foreign Trade:

- Import of goods up by 37.2 percent in February 2011
- Value of export up by 39.5 percent in February 2011

#### Government:

- Total tax revenue in February 2011 up by 17.4 percent
- Taxes on commodities up by 21.6 percent
- Taxes on property up by 9.4 percent in February 2011
- Turnover tax (BBO) up by 7.8 percent
- Taxes on income & profit up by 22.3 percent

#### Tourism:

- Total stayover visitors up by 1.8 percent in February 2011
- Cruise passengers up by 11.0 percent in February 2011

#### Passenger Traffic:

- Commercial landings up by 2.1 percent
- Arrival visitors up by 3.1 percent in February 2011

#### Population:

- Total population at the end of 2010: 107,138
- 347 births during the fourth quarter of 2010
- 168 deaths during the fourth quarter of 2010

#### Construction:

- Total new houses in the fourth quarter of 2010 down by 11.0 percent
- Total import of cement down by 12.1 percent compared to the fourth quarter of 2009

### Monthly Economic Indicators

February 2011	% Change	
	Last Month	Last Year
<b>Consumer prices</b>		
Total index	0.2	0.8
<b>Utilities</b>		
Water consumption	-17.6	-19.9
Electricity distribution	-10.2	-3.5
<b>Foreign trade</b>		
Import	35.6	37.2
Export	88.6	39.5
<b>Government</b>		
Total tax revenue	12.6	17.4
<b>Tourism</b>		
Total stayover visitors	-8.1	1.8
USA	-2.6	-3.1
Venezuela	-32.6	10.2
Colombia	-61.1	32.1
Netherlands	4.3	6.2
<b>Cruise arrivals</b>	-9.1	11.0
<b>Airport &amp; passenger traffic</b>		
Commercial landings	-11.3	2.1
Arrival visitors	-8.0	3.1

Source: Central Bureau of Statistics Aruba



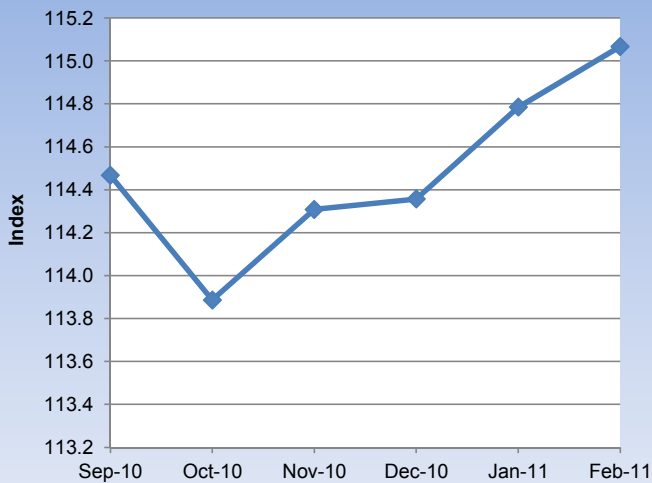
## Table of Contents

■ Consumer Price Index.....	1.1
■ International aspect.....	1.2
■ Utilities.....	2.1
■ Water distribution.....	2.2
■ Electricity distribution.....	2.3
■ Foreign Trade.....	3
■ Government Revenues.....	4
■ Tourism.....	5
■ Corresponding Tables	



## 1.1 Consumer Price Index

### Monthly CPI - Index



Month	2007-08	2008-09	2009-10	2010-11
-------	---------	---------	---------	---------

#### Consumer price index

November	108.2	113.0	114.9	114.3
December	109.9	107.9	115.2	114.4
January	111.0	107.4	114.3	114.8
February	111.5	108.3	114.1	115.1

#### Consumer price index monthly %-change

November	1.3	-4.6	0.3	0.4
December	1.6	-4.5	0.2	0.0
January	1.0	-0.4	-0.8	0.4
February	0.5	0.8	-0.1	0.2

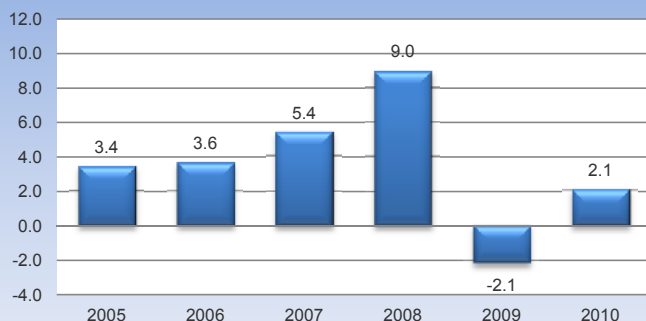
#### Consumer price index annual %-change

November	8.3	4.4	1.7	-0.5
December	9.9	-1.9	6.8	-0.7
January	9.1	-3.2	6.3	0.5
February	9.9	-2.9	5.4	0.8

#### Consumer price index period average

November	4.8	10.0	-2.8	2.7
December	5.4	9.0	-2.1	2.1
January	5.8	7.9	-1.4	1.6
February	6.4	6.8	-0.7	1.2

### Yearly CPI - Period average



### Key points

Consumer prices increased by 0.2 percent in February 2011, in contrast to a drop of 0.1 percent in February 2010. With the exception of Household operation (-0.5%) and Recreation & culture (-0.6%), price increases has been recorded for all sectors, particularly, Alcoholic beverages & tobacco (+2.0%), Transport (+0.9%), Clothing & footwear (+0.7%), Food & non-alcoholic beverages (+0.4%), Education (+0.3%), Housing (+0.2%), Communications (+0.1%) and Miscellaneous goods & services (+0.1%).

On a yearly basis, consumer prices increased by 0.8 percent in February 2011. Major price increases were recorded in the following sectors:

1. *Housing*; Average prices in the Housing sector increased by 2.2 percent compared to February 2010. Main price increases were recorded for Actual rentals for housing (+5.6%) and Electricity, gas & other fuels (+3.0%). On the other hand, the prices of Maintenance & repair of dwelling and Water supply & misc. services related to dwellings declined by 1.8 and 1.4 percent respectively.

2. *Alcoholic beverages & tobacco*; Prices in this sector increased by 11.1 percent in February 2011. Higher prices were recorded for Tobacco (+24.4%) and Alcoholic beverages (+5.4%).

3. *Transport*; In February 2011, prices in the Transport sector increased by 1.5 percent compared to February 2010. Higher prices were recorded for Operation of personal transport equipment (+7.5%), while prices of transport services and purchase of vehicles dropped by 9.6 and 3.9 percent respectively.

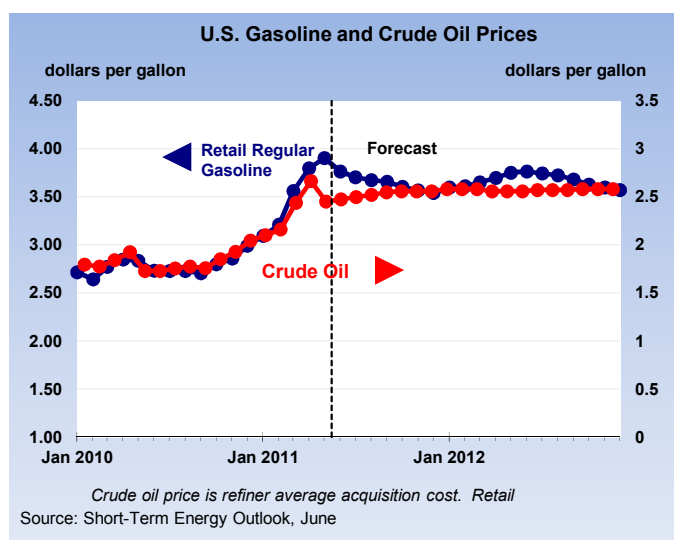
### Related statistics in this bulletin

- 1.2 International aspects
- 2.1 Utilities
- Corresponding tables

### Related statistics publications

- Consumer price index
- Economic profile
- Statistical yearbook

## 1.2 International aspects



Month	Nov-10	Dec-10	Jan-11	Feb-11
-------	--------	--------	--------	--------

### Consumer price index monthly %-change

United States	0.0	0.2	0.5	0.5
Netherlands	-0.1	-0.2	0.0	0.7
Curacao	0.1	0.1	0.3	0.1
Aruba	0.4	0.0	0.4	0.2

### Gasoline, diesel and world crude oil prices

#### United States

Gasoline (\$/gal)	2.86	2.99	3.10	3.21
Diesel (\$/gal)	3.14	3.24	3.39	3.58
Crude oil (\$/barrel)	82.54	87.22	92.04	97.00

### Export price monthly %-change

USA	1.5	0.7	1.3	1.4
-----	-----	-----	-----	-----

Month	Jan-11	Feb-11
-------	--------	--------

### Tourist arrivals by month

Aruba	74,965	68,905
Barbados	52,194	51,793
Belize	23,592	23,389
Cayman Islands	26,445	29,911
Cuba	296,222	292,332
Curacao	30,092	n.a.
Dominica	5,947	n.a.
Dominican Republic	409,539	407,615
Saint Lucia	27,010	26,221
US Virgin Islands	67,246	63,802

Source: Energy Information Administration, OECD, Bureau of labor statistics, Caribbean Tourism Organization

## Key points

World crude oil prices is still expected to tighten through 2012 given projected world oil demand growth and slowing growth in supply from countries that are NON-OPEC members. In 2012, crude oil price is projected to further increase to an estimated \$108. Keep in mind that there are many significant uncertainties that could push oil prices higher or lower than the current expectations, like decisions of major suppliers regarding production, rate of economic recovery, fiscal issues, political unrest in supplier countries and the hurricane season.

In the United States, regular-grade gasoline retail prices is expected to rise from \$2.76 per gallon to \$3.75 this summer. This is about \$99 cents per gallon higher than the previous year.

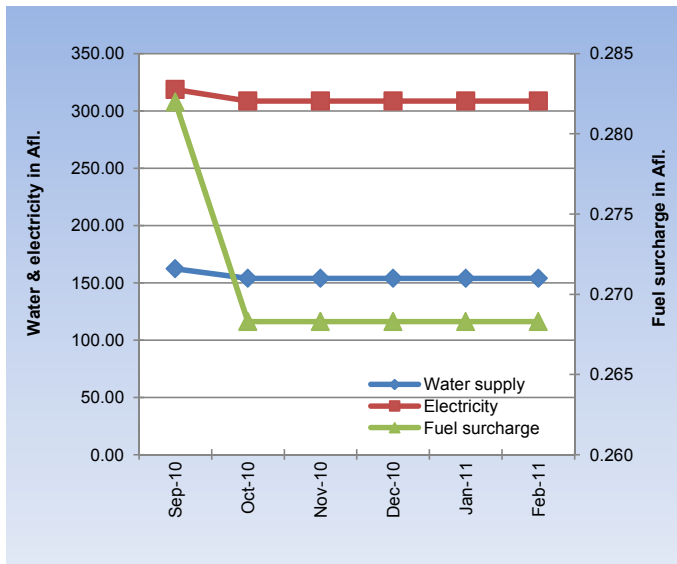
### Related statistics in this bulletin

- 1.1 Consumer price index
- 2.1 Utilities
- 5 Tourism
- Corresponding tables

### Related statistics publications

- Consumer price index
- Economic profile

## 2.1 Utilities



Nov-10 Dec-10 Jan-11 Feb-11

### Utility prices

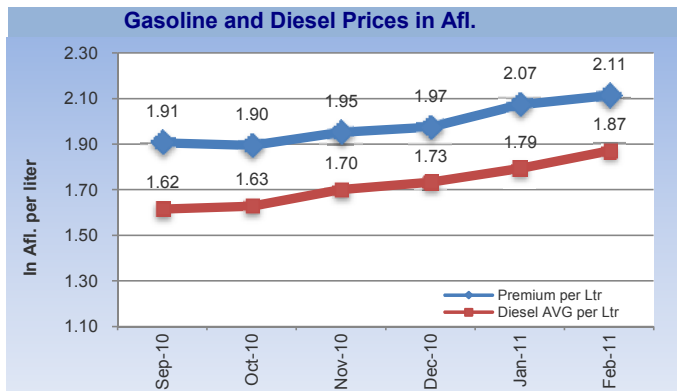
	Nov-10	Dec-10	Jan-11	Feb-11
Electricity	308.72	308.72	308.72	308.72
Gasoline	1.95	1.97	2.07	2.11
Water	153.95	153.95	153.95	153.95
Diesel	1.70	1.73	1.79	1.87
Fuel surcharge	0.268	0.268	0.268	0.268

### Utility prices monthly %-change

	Nov-10	Dec-10	Jan-11	Feb-11
Electricity	0.0	0.0	0.0	0.0
Gasoline	3.0	1.1	5.0	2.0
Water	0.0	0.0	0.0	0.0
Diesel	4.4	1.9	3.5	4.2
Fuel surcharge	0.0	0.0	0.0	0.0

### Utility prices annual %-change

	Nov-10	Dec-10	Jan-11	Feb-11
Electricity	3.1	3.1	3.1	3.1
Gasoline	2.0	2.2	11.5	10.2
Water	-1.6	-1.6	-1.6	-1.6
Diesel	6.2	7.1	14.6	16.7
Fuel surcharge	5.0	5.0	5.0	5.0



CPI USA: seasonally unadjusted

<sup>1</sup> Based on an average electricity consumption of 725.5 kWh per month.

<sup>2</sup> Based on an average per household

### Key points

The average price of water and electricity remained unchanged in February 2011, when compared to the previous month. The price of gasoline increased by Afl. 0.04 in February 2011, reaching Afl. 2.11 per liter. In addition, the price of diesel rose with Afl. 0.08 compared to the previous month, reaching an average price of Afl. 1.87 per liter. Average world crude oil prices in February 2011 reached \$ 97.00, up from \$ 92.04 recorded in January 2011.

### Prices of utilities in Aruba during March 2011

	Price change	Impact on CPI
Electricity <sup>1</sup>	0.0%	0.00
Gasoline (premium)	2.5%	0.16
Water <sup>2</sup>	0.0%	0.00
Diesel	5.9%	0.02
Rent	0.5%	0.04
<b>Total impact</b>		<b>0.22</b>

Source: Central Bureau of Statistics Aruba

Disregarding any other important fluctuations in prices over the month of March 2011, price movement of gasoline, diesel and rent during the month of March 2011 will affect to the consumer price index of March 2011 by 0.22.

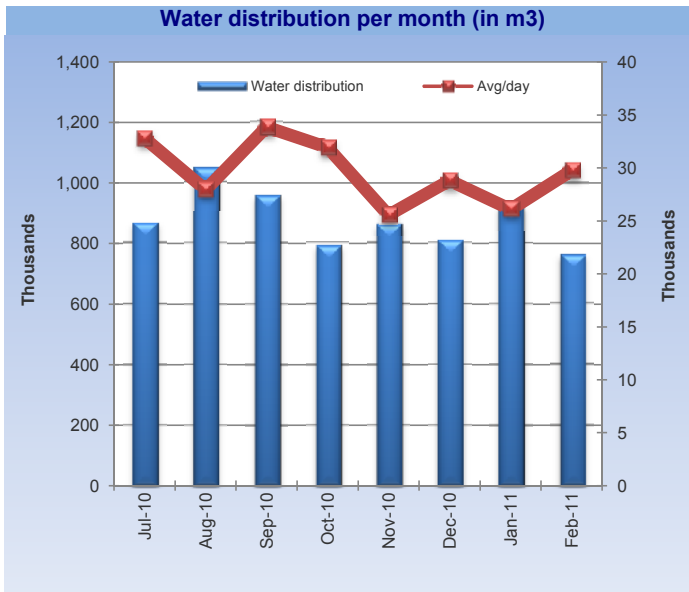
### Related statistics in this bulletin

- 2.2 Water and electricity distribution
- Corresponding tables

### Related statistics publications

- Consumer price index
- Economic profile
- Statistical yearbook

## 2.2 Water distribution



Month	2007-08	2008-09	2009-10	2010-11
-------	---------	---------	---------	---------

### Average water distribution (m3)

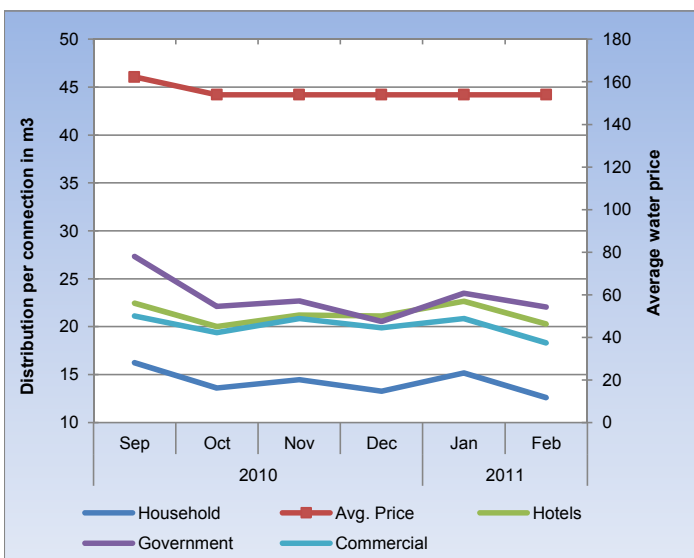
	2007-08	2008-09	2009-10	2010-11
November	915,763	798,315	983,789	863,930
December	814,342	901,140	948,856	808,806
January	1,084,763	966,937	928,242	922,259
February	931,558	826,995	947,893	759,496

### Average water distribution monthly %-change

	2007-08	2008-09	2009-10	2010-11
November	-8.1	-6.9	3.6	9.1
December	-11.1	12.9	-3.6	-6.4
January	33.2	7.3	-2.2	14.0
February	-14.1	-14.5	2.1	-17.6

### Average water distribution annual %-change

	2007-08	2008-09	2009-10	2010-11
November	0.2	-12.8	23.2	-12.2
December	-8.8	10.7	5.3	-14.8
January	12.6	-10.9	-4.0	-0.6
February	7.5	-11.2	14.6	-19.9



Hotels (x100 m3)

### Key points

During the month of February 2011, the average water distribution (houses, companies, hotels, government) fell with 19.9 percent compared to February 2010. Water usage decreases has been recorded for Houses (-21.2%), Companies (-16.1%), Hotels (-18.4%) and Government (-19.9%). On a year to date basis, total water distribution in February 2011 is running 10.4 percent below the level recorded in 2010.

### Average water distribution (in m<sup>3</sup>)\*

February 2011		% Change since		
		last month	last year	YTD % change
Houses	451,626	-16.4	-21.2	-11.9
Companies	89,826	-21.9	-16.1	-3.7
Hotels	203,675	-18.8	-18.4	-9.7
Government	14,368	-11.3	-19.9	-11.3
<b>Total</b>	<b>759,496</b>	<b>-17.6</b>	<b>-19.9</b>	<b>-10.4</b>

### Water usage per connection (in m<sup>3</sup>)

	2007-08	2008-09	2009-10	2010-11
Houses	12.6	-17.0	-23.1	-13.8
Companies	37.3	-23.5	-18.4	-5.5
Hotels (x100)	46.3	-18.8	-18.4	-9.7
Government	54.2	-10.6	-18.1	-10.0

Source: WEB Aruba N.V., Central Bureau of Statistics Aruba

\* Calculation of drink water distribution in Aruba (in m<sup>3</sup>) is based on an average water distribution per month, excluding the distribution to Valero and vessels.

On a monthly basis, the total average water usage declined by 17.6 percent compared to January 2011. Decreases has been recorded for all sectors, particularly, Houses (-16.4%), Companies (-21.9%), Hotels (-18.8%) and Government (-11.3%).

### Related statistics in this bulletin

- 2.3 Electricity distribution
- Corresponding tables

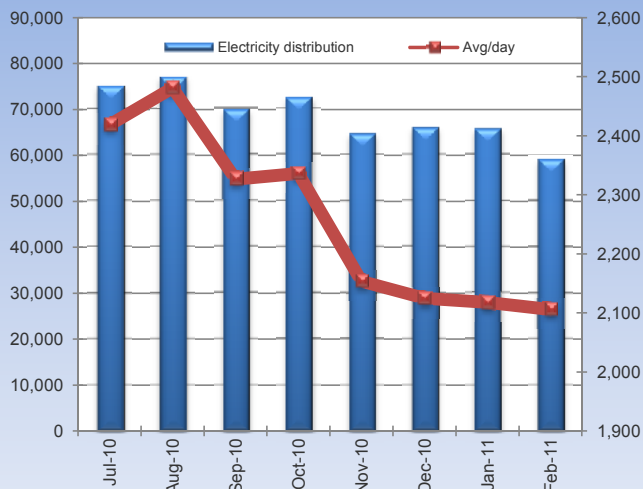
### Related statistics publications

- Economic profile
- Statistical yearbook



## 2.3 Electricity distribution

Electricity distribution (in MWh)



Month	2007-08	2008-09	2009-10	2010-11
-------	---------	---------	---------	---------

### Electricity distribution (MWh)

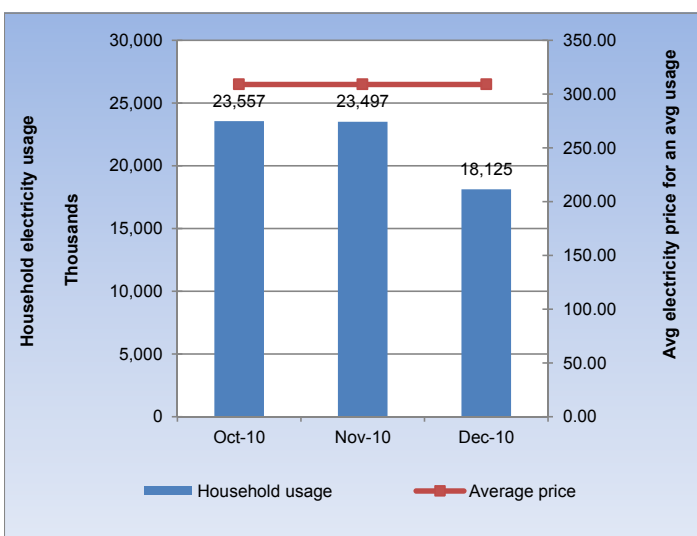
November	66,784	65,863	71,277	64,609
December	63,214	63,999	70,487	65,864
January	65,572	64,749	67,969	65,652
February	61,363	57,037	61,106	58,966

### Electricity distribution monthly %-change

November	-7.3	-3.3	-3.1	-10.8
December	-5.3	-2.8	-1.1	1.9
January	3.7	1.2	-3.6	-0.3
February	-6.4	-11.9	-10.1	-10.2

### Electricity distribution annual %-change

November	-0.8	-1.4	8.2	-9.4
December	-4.0	1.2	10.1	-6.6
January	3.5	-1.3	5.0	-3.4
February	7.4	-7.0	7.1	-3.5



### Key points

In February 2011, electricity (in MWh) supplied to Elmar for distribution dropped by 3.5 percent compared to February 2010, in contrast to an increase of 7.1 percent recorded in the similar period one year earlier. In the January-to-February period of 2011, electricity distribution fell with 3.5 percent compared to the similar period of 2010.

### Electricity Consumption (MWh)

	Dec-10	Jan-11	Feb-11
Household	23,557	23,497	18,125
Per connection	613.2	610.6	471.1
Commercial	12,187	12,269	12,995
Large users	25,534	25,665	23,173
Streetlights	353	354	355
Signage	105	102	99
Churches, schools, etc.	389	344	427

In February 2011, the total electricity usage (as reported by the ELMAR N.V.) dropped by 11.3 percent compared to the previous month. Electricity consumption of Houses, Large users and Signage fell with 22.9, 9.7 and 2.6 percent respectively.

### Related statistics in this bulletin

- 2.2 Water distribution
- Corresponding tables

### Related statistics publications

- Economic profile
- Statistical yearbook

### 3 Foreign trade



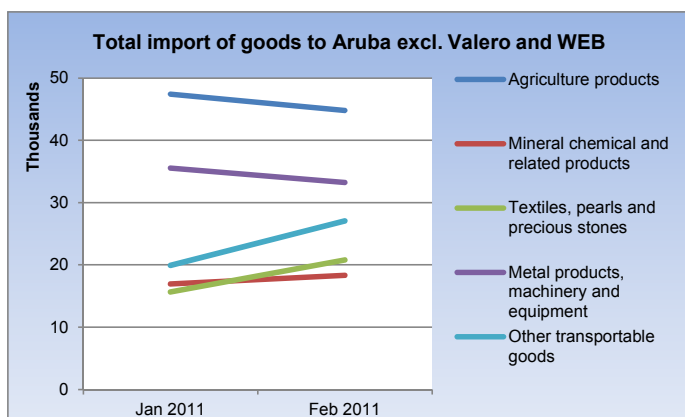
February 2011	Vx1,000 Afl.	Monthly % Ch	Yearly % Ch	YTD % Ch
---------------	--------------	--------------	-------------	----------

#### Total import of goods to Aruba by commodity group

1. Agriculture products	44,814	-5.4	-5.8	-7.5
2. Mineral chemical and related products	20,143	18.9	-2.9	-0.8
3. Textiles, pearls and precious stones	21,093	34.9	29.0	16.3
4. Metal products, machinery and equipment	69,779	96.3	124.8	79.3
5. Other transportable goods	27,779	39.5	53.3	24.1
<b>Total Import</b>	<b>183,608</b>	<b>35.6</b>	<b>37.2</b>	<b>20.0</b>

#### Total export of goods to Aruba by commodity group

1. Agriculture products	24,503	99.9	53.7	24.6
2. Mineral chemical and related products	100	-35.8	-53.1	-37.8
3. Textiles, pearls and precious stones	192	140.5	-64.1	-76.9
4. Metal products, machinery and equipment	1,363	94.0	-5.6	-14.8
5. Other transportable goods	704	-32.9	-37.2	-1.4
<b>Total Export</b>	<b>26,862</b>	<b>88.6</b>	<b>39.5</b>	<b>16.5</b>



Source: Customs Aruba, Central Bureau of Statistics Aruba

#### Key points

Total import of merchandise expanded by 37.2 percent in February 2011, when compared to February 2010. With the exception of Agriculture products (-5.8%) and Mineral, chemical & related products (-2.9%), higher levels of import has been recorded for Textiles, pearls & precious stones (+29.0%), Metal products, machinery & equipment (+29.0%) and Other transportable goods (+53.3%). On a monthly basis, total import of merchandise increased by 35.6 percent in February 2011. During the first two months of 2011, total imports increased by 20.0 percent compared to the similar period of 2010.

In February 2011, total exports rose by 39.5 percent compared to February 2010, mainly as a result of an increase in the export of Agriculture products (+53.7%). On a year to date basis, total exports increased by 16.5 percent in February 2011, when compared to the same period of 2010.

When excluding the imports from Valero and WEB, Total import increased by 10.5 in February 2011, when compared to February 2010. In the January-to-February period of 2011, Total import (excl. Valero & WEB) expanded by 2.7 percent compared to the similar period of 2010.

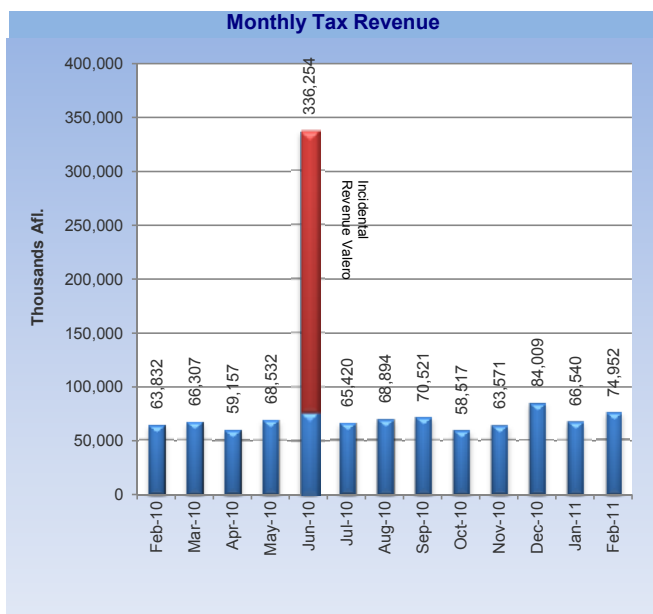
#### Related statistics in this bulletin

- Corresponding tables

#### Related statistics publications

- Foreign Trade Statistics
- Economic profile
- Statistical yearbook

## 4 Government



### Key points

In February 2011, the total government tax revenue increased by 17.4 percent compared to February 2010. The Taxes on income & profit increased by 22.3 percent in February 2011, particularly as a result of increases in the Wage tax (+35.0%), Profit tax (+0.5%) and Dividend tax (+153.9%). Taxes on commodities increased by 21.6 percent compared to February 2010, mainly as a result of increases in the Import duties (+34.1%) and Excises on gasoline (+18.4%). Other notable revenue increases in February 2011 were recorded for Motor vehicle tax (+12.3%), Turnover tax (+7.8%) and Tourist tax. Since January 2011, the lodging tax is replaced by the Tourist tax.

### Tax Revenues<sup>1</sup>

February 2011	(x1,000 AfL.)	% Change since		
		last month	last year	YTD % change
<b>Taxes on income &amp; profit</b>	<b>27,050</b>	<b>-11.8</b>	<b>22.3</b>	<b>20.9</b>
Income tax	-979	-116.6	-547.0	-294.0
Wage tax	23,001	-6.5	35.0	20.1
Profit tax	4,802	-17.1	0.5	46.2
Dividend tax	226	-69.3	153.9	590.6
<b>Taxes on commodities</b>	<b>22,037</b>	<b>124.5</b>	<b>21.6</b>	<b>-9.4</b>
Import duties	12,737	67.1	34.1	21.8
Excises on spirits	1,194	146.2	11.7	-30.1
Excises on cigarettes	357	-54.2	-58.7	-43.3
Excises on beer	1,990	152.2	0.5	-31.4
Excises on gasoline	5,275	26275.0	18.4	-44.5
Other customs	484	300.0	89.1	36.0
<b>Taxes on property</b>	<b>8,250</b>	<b>2.6</b>	<b>9.4</b>	<b>16.6</b>
Long-lease property rights	295	-48.9	-37.1	-5.7
Land tax	1,007	24.6	10.2	1.7
Transfer tax	639	-28.2	27.8	20.2
Succession tax	13	85.7	-75.5	-65.5
Motor vehicle tax	6,296	9.3	12.3	21.4
<b>Taxes on services</b>	<b>2,520</b>	<b>-68.4</b>	<b>-61.0</b>	<b>-15.8</b>
Lodging tax	7	-99.9	-99.8	-25.2
Gambling licenses	2,475	10.7	1.6	-0.1
Stamp duties	38	-54.2	-63.8	-29.2
<b>Turnover tax (BBO)</b>	<b>7,251</b>	<b>-14.3</b>	<b>7.8</b>	<b>-27.1</b>
<b>Tourist tax</b>	<b>6,048</b>	-	-	-
<b>Other tax &amp; nontax rev</b>	<b>1,796</b>	<b>14.0</b>	<b>-36.9</b>	<b>-23.9</b>
<b>Total tax revenue</b>	<b>74,952</b>	<b>12.6</b>	<b>17.4</b>	<b>4.5</b>

Source: Tax Collector's Office

<sup>1</sup> Excluding AZV and AOV/ AWW.

### Related statistics in this bulletin

- Corresponding tables

### Related statistics publications

- Economic profile
- Statistical yearbook

Month	2007-08	2008-09	2009-10	2010-11
-------	---------	---------	---------	---------

#### Total tax revenues (x 1,000 AfL.)

November	76,785	75,662	76,449	63,571
December	90,406	81,812	92,289	84,009
January	84,050	83,675	71,506	66,540
February	87,804	76,416	63,832	74,952

#### Total tax revenue monthly %-change

November	0.9	4.9	-0.7	8.6
December	17.7	8.1	20.7	32.1
January	-7.0	2.3	-22.5	-20.8
February	4.5	-8.7	-10.7	12.6

#### Total tax revenue annual %-change

November	3.1	-1.5	1.0	-16.8
December	25.7	-9.5	12.8	-9.0
January	42.6	-0.4	-14.5	-6.9
February	n.a.	-13.0	-16.5	17.4

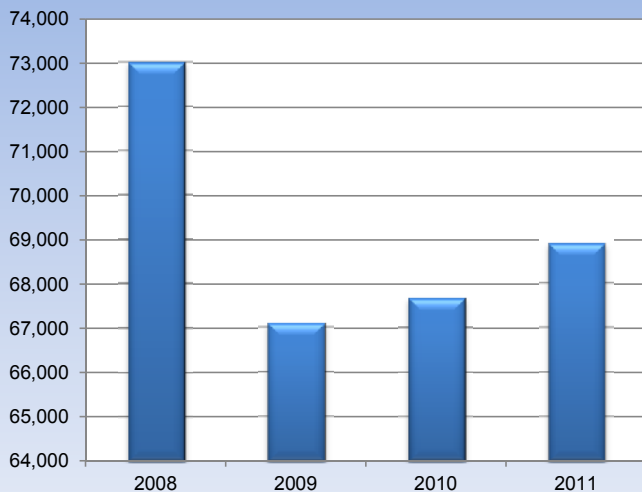
	Nov-10	Dec-10	Jan-11	Feb-11
--	--------	--------	--------	--------

AOV / AWW	10,936	11,212	15,696	16,256
AZV	15,001	16,329	19,460	20,457
Total Social Contr.	25,937	27,541	35,156	36,712

(x 1,000 AfL.)

## 5 Tourism

### Visitor Traffic in Aruba during the months of February



Month	2007-08	2008-09	2009-10	2010-11
-------	---------	---------	---------	---------

#### Total stay-over visitors

November	67,851	66,157	67,848	63,388
December	77,723	78,886	75,905	77,788
January	71,262	69,225	71,240	74,965
February	73,007	67,107	67,672	68,905

#### Stay-over visitors monthly %-change

November	7.9	12.2	7.3	-5.4
December	14.5	19.2	11.9	22.7
January	-8.3	-12.2	-6.1	-3.6
February	2.4	-3.1	-5.0	-8.1

#### Stay-over visitors annual %-change

November	23.3	-2.5	2.6	-6.6
December	20.1	1.5	-3.8	2.5
January	20.8	-2.9	2.9	5.2
February	22.0	-8.1	0.8	1.8

	Nov-10	Dec-10	Jan-11	Feb-11
--	--------	--------	--------	--------

#### Arrivals

Resident	6,250	7,733	9,057	5,432
Non-resident	65,354	80,427	76,127	70,050

#### Landings

Commercial landings	1,196	1,417	1,308	1,160
Non-Commercial landings:	216	478	476	237

#### Cruise Tourism

Cruise passengers	88,231	82,775	97,176	88,310
-------------------	--------	--------	--------	--------

Source: Aruba Tourism Authority, I.A.S.A., Cruise Tourism Aruba

#### Tourism

February 2011	% Change since			YTD % change
	last month	last year		
<b>Total stay over visitors</b>	<b>68,905</b>	<b>-8.1</b>	<b>1.8</b>	<b>3.6</b>
USA	46,805	-2.6	-3.1	-1.0
Venezuela	4,549	-32.6	10.2	20.0
Colombia	642	-61.1	32.1	30.3
Netherlands	3,482	4.3	6.2	5.5
Neth. Antilles	1,075	-12.5	-16.5	-6.2
Canada	5,850	1.6	29.8	13.8
Other	6,502	-20.5	14.7	15.1

Source: Aruba Tourism Authority

#### Key points

In February 2011, the total number of stayover visitors increased by 1.8 percent compared to February 2010, following a 0.8 percent growth in the similar period one year earlier. The most notable increases were recorded for the visitors from Canada (+29.8%) and Venezuela (+10.2%). In addition, increases were recorded for visitors from Italy (+123.3%), Argentina (+55.5%), Chile (+243.5%) and the Netherlands (+6.2%). On the other hand, visitors from the U.S.A, Brazil and Curacao declined by 3.1, 29.2 and 18.5 percent respectively. In February 2011, the US market represents a share of 65.9 percent of the total visitor market, followed by the Canadian market (8.1%) and Venezuelan market (7.9%).

In the January-to-February period of 2011, total number of visitors to Aruba increased by 3.6 percent compared to the similar period of 2010.

In February 2011, the number of cruise passengers increased by 11.0 percent compared to February 2010, in contrast to a drop of 4.2 percent recorded in the similar period one year earlier.

#### Related statistics in this bulletin

- Corresponding tables

#### Related statistics publications

- Tourist profile
- Economic profile
- Statistical yearbook

## Consumer Price Index

(Dec 2006=100)

Sector	Jan '10	Feb '10	Jan '11	Feb '11	YTD <sup>1</sup>	YTD	Monthly	Yearly
					2010	2011	% change	% change
					in %			
Food & non-alcoholic beverages	132.1	131.6	134.2	134.8	-1.4	0.9	0.4	2.4
Alcoholic beverages & tobacco	111.3	111.0	120.9	123.3	-1.4	10.2	2.0	11.1
Clothing & footwear	117.3	116.2	110.0	110.8	-2.9	0.4	0.7	-4.7
Housing	127.5	127.6	130.2	130.4	0.1	0.3	0.2	2.2
Household operation	107.1	106.2	105.9	105.4	-1.7	-0.2	-0.5	-0.8
Health	92.8	92.4	92.7	92.6	-0.5	0.5	0.0	0.3
Transport	107.4	108.4	109.0	109.9	-1.1	2.3	0.9	1.5
Communications	83.1	83.0	84.2	84.3	-0.5	0.7	0.1	1.7
Recreation & culture	113.0	112.3	110.7	110.1	-1.9	-2.2	-0.6	-2.0
Education	109.6	109.7	112.1	112.4	0.2	0.6	0.3	2.4
Restaurants & hotels	118.8	118.3	117.0	117.0	-0.6	0.4	0.0	-1.1
Miscellaneous goods & services	99.8	99.2	99.4	99.4	-1.1	0.6	0.1	0.2
<b>Total Index</b>	<b>114.3</b>	<b>114.1</b>	<b>114.8</b>	<b>115.1</b>	<b>-0.9</b>	<b>0.6</b>	<b>0.2</b>	<b>0.8</b>
Fuel Surcharge (in Afl.)	0.26	0.26	0.27	0.27	0.0	0.0	0.0	5.0
Water (in Afl.) <sup>2</sup>	156.40	156.40	153.95	153.95	0.0	0.0	0.0	-1.6
Electricity (in Afl.) <sup>3</sup>	299.51	299.51	308.72	308.72	0.0	0.0	0.0	3.1
Aruba Gasoline (in Afl. per ltr)	1.86	1.92	2.07	2.11	-3.7	5.0	2.0	10.2
Aruba Diesel (in Afl. per ltr)	1.57	1.60	1.79	1.87	-3.2	3.5	4.2	16.7
US Gasoline (in \$ per ltr)	0.72	0.70	0.82	0.85	1.4	7.3	3.7	21.4
US Diesel (in \$ per ltr)	0.75	0.74	0.90	0.95	1.5	10.5	5.8	28.7
Crude Oil (in \$)	76.59	72.47	92.04	97.00	-1.2	11.2	5.4	33.9

## Utilities

	Jan '10	Feb '10	Jan '11	Feb '11	2010	2011	Monthly	Yearly
							% change	% change
<b>Electricity supplied to Elmar for distribution (in MWh)</b>								
Total average	67,969	61,106	65,652	58,966	129,075	124,618	-10.2	-3.5
<b>Water consumption (in m3)</b>								
Houses	552,313	573,113	540,306	451,626	1,125,426	991,933	-16.4	-21.2
Companies	105,668	107,117	115,043	89,826	212,785	204,869	-21.9	-16.1
Hotels	253,726	249,716	250,708	203,675	503,442	454,383	-18.8	-18.4
Government	16,534	17,947	16,201	14,368	34,481	30,569	-11.3	-19.9
<b>Total average</b>	<b>928,242</b>	<b>947,893</b>	<b>922,259</b>	<b>759,496</b>	<b>1,876,135</b>	<b>1,681,754</b>	<b>-17.6</b>	<b>-19.9</b>

## Foreign Trade in Merchandise (\*1,000 Afl.)

	Jan '10	Feb '10	Jan '11	Feb '11	2010	2011	Monthly	Yearly
							% change	% change
<b>Imports of goods by commodity group</b>								
Agriculture products	52,078	47,595	47,390	44,814	99,673	92,204	-5.4	-5.8
Mineral chemical and related products	16,625	20,749	16,946	20,143	37,374	37,089	18.9	-2.9
Textiles, pearls and precious stones	15,218	16,347	15,631	21,093	31,565	36,725	34.9	29.0
Metal products, machinery and equipment	27,695	31,036	35,542	69,779	58,730	105,321	96.3	124.8
Other transportable goods	20,318	18,121	19,919	27,779	38,439	47,697	39.5	53.3
<b>Total Import</b>	<b>131,933</b>	<b>133,847</b>	<b>135,428</b>	<b>183,608</b>	<b>265,780</b>	<b>319,036</b>	<b>35.6</b>	<b>37.2</b>
<b>Exports of goods by commodity group</b>								
Agriculture products	13,561	15,937	12,257	24,503	29,498	36,760	99.9	53.7
Mineral chemical and related products	197	213	155	100	410	255	-35.8	-53.1
Textiles, pearls and precious stones	640	535	80	192	1,175	272	140.5	-64.1
Metal products, machinery and equipment	979	1,445	703	1,363	2,424	2,066	94.0	-5.6
Other transportable goods	658	1,121	1,049	704	1,779	1,754	-32.9	-37.2
<b>Total Export</b>	<b>16,034</b>	<b>19,251</b>	<b>14,244</b>	<b>26,862</b>	<b>35,285</b>	<b>41,106</b>	<b>88.6</b>	<b>39.5</b>

<sup>1)</sup> YTD (Year to date) refers to the period of January 1st of the current year to the month under review.

<sup>2)</sup> Based on an average per household

<sup>3)</sup> Based on an average of 725.5 kWh

## Government Revenues (\*1,000 Afl.)

	Jan '10	Feb '10	Jan '11	Feb '11	YTD <sup>1</sup> 2010	YTD 2011	Monthly change	Yearly change
<b>Taxes on income and profit</b>	<b>25,617</b>	<b>22,126</b>	<b>30,666</b>	<b>27,050</b>	<b>47,742</b>	<b>57,716</b>	<b>-11.8</b>	<b>22.3</b>
Income tax	519	219	-452	-979	737	-1,430	-116.6	-547.0
Wage tax	22,581	17,040	24,590	23,001	39,621	47,591	-6.5	35.0
Profit tax	2,467	4,778	5,793	4,802	7,245	10,595	-17.1	0.5
Dividend tax	50	89	735	226	139	960	-69.3	153.9
<b>Taxes on commodities</b>	<b>17,046</b>	<b>18,124</b>	<b>9,817</b>	<b>22,037</b>	<b>35,171</b>	<b>31,855</b>	<b>124.5</b>	<b>21.6</b>
Import duties	7,223	9,497	7,623	12,737	16,721	20,360	67.1	34.1
Excises on spirits	1,331	1,069	485	1,194	2,401	1,679	146.2	11.7
Excises on cigarettes	1,141	864	779	357	2,005	1,137	-54.2	-58.7
Excises on beer	2,070	1,981	789	1,990	4,051	2,779	152.2	0.5
Excises on gasoline	5,092	4,457	20	5,275	9,549	5,296	26,275.0	18.4
Other customs	189	256	121	484	444	604	300.0	89.1
<b>Taxes on property</b>	<b>6,426</b>	<b>7,543</b>	<b>8,040</b>	<b>8,250</b>	<b>13,967</b>	<b>16,290</b>	<b>2.6</b>	<b>9.4</b>
Long-lease property rights (erfpachtsrechten)	456	469	577	295	925	872	-48.9	-37.1
Land tax	870	914	808	1,007	1,784	1,814	24.6	10.2
Transfer tax	773	500	890	639	1,273	1,530	-28.2	27.8
Succession tax	6	53	7	13	58	20	85.7	-75.5
Motor vehicle tax (incl. numberplates)	4,321	5,607	5,758	6,296	9,927	12,054	9.3	12.3
<b>Taxes on services</b>	<b>6,010</b>	<b>6,462</b>	<b>7,984</b>	<b>2,520</b>	<b>12,472</b>	<b>10,504</b>	<b>-68.4</b>	<b>-61.0</b>
Lodging tax	3,664	3,920	5,665	7	7,584	5,672	-99.9	-99.8
Gambling licenses	2,280	2,437	2,236	2,475	4,717	4,711	10.7	1.6
Stamp duties	66	105	83	38	171	121	-54.2	-63.8
<b>Turnover tax (BBO)</b>	<b>14,828</b>	<b>6,729</b>	<b>8,458</b>	<b>7,251</b>	<b>21,556</b>	<b>15,709</b>	<b>-14.3</b>	<b>7.8</b>
<b>Tourist tax</b>	<b>0</b>	<b>0</b>	<b>0</b>	<b>6,048</b>	<b>0</b>	<b>6,048</b>		
<b>Other tax and nontax revenues</b>	<b>1,579</b>	<b>2,848</b>	<b>1,575</b>	<b>1,796</b>	<b>4,429</b>	<b>3,370</b>	<b>14.0</b>	<b>-36.9</b>
<b>Total tax revenues<sup>4</sup></b>	<b>71,506</b>	<b>63,832</b>	<b>66,540</b>	<b>74,952</b>	<b>135,337</b>	<b>141,492</b>	<b>12.6</b>	<b>17.4</b>

## Tourism

	Jan '10	Feb '10	Jan '11	Feb '11	YTD <sup>1</sup> 2010	YTD 2011	Monthly % change	Yearly % change
<b>Total stay over visitors</b>	<b>71,240</b>	<b>67,672</b>	<b>74,965</b>	<b>68,905</b>	<b>138,912</b>	<b>143,870</b>	<b>-8.1</b>	<b>1.8</b>
USA	47,545	48,320	48,060	46,805	95,865	94,865	-2.6	-3.1
Venezuela	5,287	4,127	6,750	4,549	9,414	11,299	-32.6	10.2
Colombia	1,274	486	1,652	642	1,760	2,294	-61.1	32.1
Netherlands	3,186	3,278	3,337	3,482	6,464	6,819	4.3	6.2
Neth. Antilles	1,169	1,287	1,228	1,075	2,456	2,303	-12.5	-16.5
Canada	5,692	4,507	5,758	5,850	10,199	11,608	1.6	29.8
Other	7,087	5,667	8,180	6,502	12,754	14,682	-20.5	14.7
<b>Airport Traffic</b>								
<b>Total landings</b>	<b>1,803</b>	<b>1,452</b>	<b>1,784</b>	<b>1,397</b>	<b>3,255</b>	<b>3,181</b>	<b>-21.7</b>	<b>-3.8</b>
Commercial landings	1,251	1,136	1,308	1,160	2,387	2,468	-11.3	2.1
Non-commercial landings	552	316	476	237	868	713	-50.2	-25.0
<b>Passenger Traffic</b>								
<b>Total arrivals</b>	<b>79,376</b>	<b>71,931</b>	<b>85,184</b>	<b>75,482</b>	<b>151,307</b>	<b>160,666</b>	<b>-11.4</b>	<b>4.9</b>
Arrival locals	7,067	4,014	9,057	5,432	11,081	14,489	-40.0	35.3
Arrival visitors	72,309	67,917	76,127	70,050	140,226	146,177	-8.0	3.1

<sup>1)</sup> YTD (Year to date) refers to the period of January 1st of the current year to the month under review. This period is compared to the same period of the previous year.

<sup>4)</sup> AZV and AOV/AWW are not included.