

## Consumer Price Index, base period December 2006 October 2009

*The Central Bureau of Statistics presents the most important findings for the Consumer Price Index (CPI) for the month of October 2009.*

### Overview Consumer Price Indices

| Oct-08 | Dec-08 | Sep-09 | Oct-09 |
|--------|--------|--------|--------|
| 118.43 | 107.88 | 114.97 | 114.57 |

- The CPI for October 2009 is 114.57, a decrease of 0.36% compared to the index of September 2009 (114.97).
- The percentage change for the first 10 months (January to October 2009) of the CPI is 6.20, 1.54 percentage points (ppts) lower compared to 7.74 for the same period of last year.
- The percentage change of the CPI over the last 12 months (October 2008 to October 2009) is -3.26, a decrease of 14.16 ppts compared to the percentage change for the same period of last year (10.90).
- The period average percentage change of the CPI for the period October 2008 - October 2009 is -2.62, a decrease of 12.95 ppts compared to the period average percentage change over the period October 2007 - October 2008 (10.33).

### Table 1 Overview percentage change CPI

| Period                      |           | 2009  | 2008 <sup>3</sup> |
|-----------------------------|-----------|-------|-------------------|
| Current month               | Sep - Oct | -0.36 | -0.85             |
| Year-to-date                | Dec - Oct | 6.20  | 7.74              |
| Last 12 months <sup>1</sup> | Oct - Oct | -3.26 | 10.90             |
| Last 24 months <sup>2</sup> | Oct - Oct | -2.62 | 10.33             |

Source: Central Bureau of Statistics Aruba

<sup>1</sup> End of period inflation

<sup>2</sup> Period average inflation

<sup>3</sup> Revised figures

In October 2009 the sectors that show the highest percentage changes in the CPI are:

| CPI                                | -0.36 |
|------------------------------------|-------|
| • Transport                        | -1.85 |
| • Restaurants and hotels           | 1.39  |
| • Household operation              | -0.56 |
| • Miscellaneous goods and services | -0.44 |
| • Recreation and culture           | -0.37 |

### Table 2 Percentage change by sector

| Sector                               | Weight coefficient | Effect Sep - Oct | Percentage changes |                        |                               |                                |
|--------------------------------------|--------------------|------------------|--------------------|------------------------|-------------------------------|--------------------------------|
|                                      |                    |                  | Monthly Sep - Oct  | Year-to-date Dec - Oct | End of period Oct 08 - Oct 09 | Period average Oct 08 - Oct 09 |
| <b>CPI</b>                           | <b>10,000</b>      | <b>-0.36</b>     | <b>-0.36</b>       | <b>6.20</b>            | <b>-3.26</b>                  | <b>-2.62</b>                   |
| 01. Food and non-alcoholic beverages | 1,125.3            | -0.01            | -0.10              | -1.05                  | 0.21                          | 7.06                           |
| 02. Alcoholic beverages and tobacco  | 81.9               | 0.00             | 0.05               | 4.06                   | 4.34                          | 4.60                           |
| 03. Clothing and footwear            | 625.9              | -0.02            | -0.32              | 1.91                   | 1.27                          | 0.38                           |
| 04. Housing                          | 2,553.3            | 0.06             | 0.22               | 17.83                  | -6.45                         | -10.67                         |
| 05. Household operation              | 741.3              | -0.04            | -0.56              | 2.82                   | 1.64                          | 2.84                           |
| 06. Health                           | 235.8              | 0.00             | -0.20              | 0.82                   | 0.82                          | 4.56                           |
| 07. Transport                        | 1,815.4            | -0.32            | -1.85              | 4.93                   | -10.75                        | -7.16                          |
| 08. Communications                   | 706.3              | -0.01            | -0.27              | 0.11                   | -0.64                         | -1.04                          |
| 09. Recreation and culture           | 891.2              | -0.03            | -0.37              | 2.74                   | 1.62                          | 2.42                           |
| 10. Education                        | 83.0               | 0.00             | 0.09               | 0.25                   | -7.03                         | -3.89                          |
| 11. Restaurants and hotels           | 373.7              | 0.05             | 1.39               | 4.29                   | 4.78                          | 8.08                           |
| 12. Miscellaneous goods and services | 767.0              | -0.03            | -0.44              | 2.03                   | 2.07                          | 2.76                           |

Source: Central Bureau of Statistics Aruba

## Monthly Percentage Change

The consumption basket of the CPI consists of 452 goods and services. Compared to September 2009, 37.0% of these products had an increase in price, while 31.4% showed a decrease and the remaining 31.6% had no change in price.

The prices of all products (goods and services) in the consumption basket of the CPI show a decrease of 0.36% for the month of October 2009 compared to the prices observed in September 2009.

The prices of goods decreased by 0.64% and caused an influence of -0.42 ppts on the percentage change of the CPI. The prices of services show an increase (0.18%) and had an influence of 0.06 ppts on the CPI.

**Table 3 Overview percentage change and effect on the CPI of October 2009 by type of products**

| Period   | Index  |        | Monthly change | Effect |
|----------|--------|--------|----------------|--------|
|          | Sep-09 | Oct-09 |                |        |
| Total    | 114.97 | 114.57 | -0.36          | -0.36  |
| Goods    | 120.86 | 120.10 | -0.64          | -0.42  |
| Services | 105.06 | 105.26 | 0.18           | 0.06   |

Source: Central Bureau of Statistics Aruba

In October 2009, the sectors that had the greatest influence on the percentage change of the CPI are:

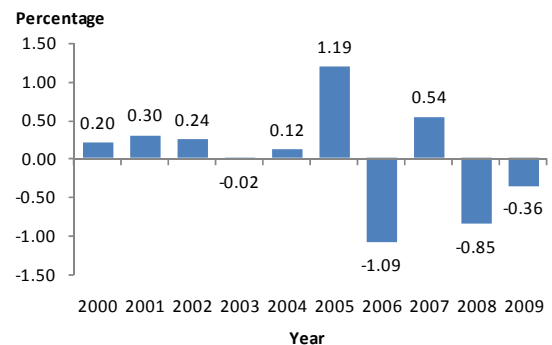
- Transport (-0.32), where a decrease in prices was registered in the category "Operation of personal transport equipment".
- Housing (0.06), where increases in prices were registered in the categories "Actual rentals for housing" and "Maintenance and repair of the dwelling".
- Restaurants and hotels (0.05), where an increase in prices was registered in the category "Catering services".
- Household operation (-0.04), where a decrease in prices was mainly registered in the category "Furniture, furnishings, carpets and other floor coverings".
- Recreation and culture (-0.03), where a decrease in prices was mainly registered in the category "Holidays".

**Table 4 Categories with the greatest effect on the CPI of October 2009**

| Category  | Monthly change | Effect change |
|---|----------------|---------------|
| Operation of personal transport equipment                 | -3.57          | -0.31         |
| Catering services   | 1.40           | 0.05          |
| Actual rentals for housing                                | 0.45           | 0.04          |
| Furniture, furnishings, carpets and other floor coverings | -2.93          | -0.03         |
| Holidays  | -3.82          | -0.02         |
| Maintenance and repair of the dwelling                    | 0.51           | 0.02          |
| Clothing  | -0.36          | -0.02         |

Source: Central Bureau of Statistics Aruba

**Graph 1 Monthly percentage change of the CPI for October, 2000 - 2009**



Graph 1 shows that the monthly percentage change of the CPI increased by 0.49 ppts to -0.36 in October of 2009 from -0.85 in October of 2008.

**Table 5 Percentage changes by month, 2007 - 2009**

| Month     | Percentage changes |              |               |                |         |              |               |                |         |              |               |                |
|-----------|--------------------|--------------|---------------|----------------|---------|--------------|---------------|----------------|---------|--------------|---------------|----------------|
|           | 2007               |              |               |                | 2008    |              |               |                | 2009    |              |               |                |
|           | Monthly            | Year-to-date | End of period | Period average | Monthly | Year-to-date | End of period | Period average | Monthly | Year-to-date | End of period | Period average |
| January   | 1.70               | 1.70         | 3.88          | 3.58           | 0.96    | 0.96         | 9.13          | 5.83           | -0.40   | -0.40        | -3.19         | 7.88           |
| February  | -0.20              | 1.49         | 2.94          | 3.44           | 0.47    | 1.44         | 9.87          | 6.41           | 0.76    | 0.36         | -2.91         | 6.79           |
| March     | 0.82               | 2.32         | 3.95          | 3.41           | 0.68    | 2.13         | 9.72          | 6.89           | 0.65    | 1.01         | -2.94         | 5.71           |
| April     | 0.28               | 2.60         | 3.72          | 3.41           | 0.58    | 2.73         | 10.05         | 7.42           | 0.28    | 1.29         | -3.23         | 4.59           |
| May       | 1.16               | 3.79         | 3.67          | 3.38           | 0.94    | 3.70         | 9.82          | 7.93           | 0.54    | 1.84         | -3.62         | 3.46           |
| June      | 2.26               | 6.14         | 5.70          | 3.52           | 1.78    | 5.54         | 9.30          | 8.23           | 2.42    | 4.30         | -3.02         | 2.42           |
| July      | -0.43              | 5.68         | 5.04          | 3.62           | 1.70    | 7.33         | 11.64         | 8.79           | 1.91    | 6.29         | -2.81         | 1.23           |
| August    | 0.90               | 6.63         | 5.53          | 3.73           | 1.82    | 9.29         | 12.66         | 9.39           | -0.13   | 6.15         | -4.68         | -0.20          |
| September | -0.39              | 6.22         | 5.11          | 3.82           | -0.58   | 8.66         | 12.45         | 10.00          | 0.40    | 6.58         | -3.74         | -1.50          |
| October   | 0.54               | 6.79         | 6.83          | 4.25           | -0.85   | 7.74         | 10.90         | 10.33          | -0.36   | 6.20         | -3.26         | -2.62          |
| November  | 1.32               | 8.20         | 8.29          | 4.78           | -4.61   | 2.77         | 4.40          | 9.98           |         |              |               |                |
| December  | 1.59               | 9.92         | 9.92          | 5.39           | -4.51   | -1.86        | -1.86         | 8.96           |         |              |               |                |

Source: Central Bureau of Statistics Aruba

Note: 2007 and 2008 have been revised

**Table 6 Prices of crude oil, utilities, gasoline and diesel, 2008 - 2009**

| Month     | 2008                   |                             |                          |                    |                       |        | 2009      |                |             |        |          |        |
|-----------|------------------------|-----------------------------|--------------------------|--------------------|-----------------------|--------|-----------|----------------|-------------|--------|----------|--------|
|           | Crude oil <sup>1</sup> | Fuel surcharge <sup>2</sup> | Electricity <sup>3</sup> | Water <sup>4</sup> | Gasoline <sup>5</sup> | Diesel | Crude oil | Fuel surcharge | Electricity | Water  | Gasoline | Diesel |
| January   | 89.87                  | 28.00                       | 317.21                   | 156.66             | 210.90                | 192.70 | 39.93     | 14.20          | 217.09      | 116.13 | 141.40   | 128.10 |
| February  | 90.82                  | 28.00                       | 317.21                   | 156.66             | 213.10                | 191.60 | 41.23     | 14.20          | 217.09      | 116.13 | 153.80   | 133.70 |
| March     | 100.46                 | 28.00                       | 317.21                   | 156.66             | 217.70                | 200.30 | 45.19     | 15.42          | 225.94      | 120.24 | 156.80   | 125.60 |
| April     | 104.95                 | 28.00                       | 317.21                   | 156.66             | 227.10                | 221.00 | 49.36     | 15.42          | 225.94      | 120.24 | 161.70   | 125.40 |
| May       | 117.13                 | 28.00                       | 317.21                   | 156.66             | 240.40                | 231.00 | 54.91     | 16.23          | 231.82      | 122.86 | 166.30   | 132.30 |
| June      | 128.06                 | 30.43                       | 334.84                   | 167.98             | 256.70                | 251.30 | 67.70     | 21.10          | 267.15      | 141.19 | 182.40   | 137.30 |
| July      | 133.52                 | 33.48                       | 356.97                   | 176.85             | 266.20                | 257.90 | 64.62     | 25.56          | 299.51      | 156.40 | 192.90   | 151.50 |
| August    | 115.86                 | 38.55                       | 393.75                   | 188.52             | 259.70                | 256.50 | 71.42     | 25.56          | 299.51      | 156.40 | 184.90   | 147.30 |
| September | 98.52                  | 36.52                       | 379.02                   | 187.21             | 247.30                | 225.70 | 67.87     | 25.56          | 299.51      | 156.40 | 193.80   | 157.30 |
| October   | 73.95                  | 32.46                       | 349.57                   | 174.22             | 256.60                | 216.70 | 71.16     | 25.56          | 299.51      | 156.40 | 183.30   | 150.10 |
| November  | 50.90                  | 24.35                       | 290.73                   | 147.38             | 185.80                | 175.30 |           |                |             |        |          |        |
| December  | 39.71                  | 14.20                       | 217.09                   | 116.13             | 156.80                | 153.80 |           |                |             |        |          |        |

Source: Central Bureau of Statistics Aruba

<sup>1</sup> Average world crude oil price per barrel in US\$ (Source: U.S. Energy Information Administration)

<sup>2</sup> Fuel surcharge in Afl. cents per kWh

<sup>3</sup> Electricity price in Afl. is based on an average household usage of 725.5 kWh (Revised figures)

<sup>4</sup> Water price in Afl. is based on an average household usage (Revised figures)

<sup>5</sup> Gasoline and diesel prices in Afl. cents per liter

### Change in prices of crude oil, utilities, gasoline and diesel in October 2009

The prices of utilities (electricity and water supply), gasoline and diesel are for the greater part determined by international crude oil prices. In October 2009 the average price of crude oil per barrel (US\$ 71.16) increased by US\$ 3.29 (+4.85%) compared to September (US\$ 67.87).

Fuel surcharge did not change in October, it stayed at Afl. 25.56 cents per kWh. The prices of electricity and water did not change either compared to September 2009. Subsequently the average electricity price per household remained at Afl. 299.51, while the average price of water per household remained at Afl. 156.40.

In October 2009 the price of gasoline decreased by Afl. 0.11 (-5.42%) causing an effect of -0.31 ppts on the CPI. The price of diesel also registered a decrease in October 2009. Compared to September 2009 it decreased by Afl. 0.07 (-4.58%) causing an effect of -0.01 ppt on the CPI.

In October 2009, utilities, gasoline and diesel as a group show a decrease in prices of 1.62% compared to September 2009, and had an influence of -0.32 ppts on the CPI, while the remaining 448 goods and services, as a group, experienced also a decrease in prices (0.04%), causing an effect of -0.03 ppts on the CPI.

**Table 7 Effect on the CPI of October 2009 of goods and services which are dependent on crude oil prices**

| Category                     | Weight   | Monthly change | Effect |
|------------------------------|----------|----------------|--------|
| Electricity                  | 721.0    | 0.00           | 0.00   |
| Gasoline                     | 530.6    | -5.42          | -0.31  |
| Water supply                 | 437.4    | 0.00           | 0.00   |
| Diesel                       | 21.8     | -4.58          | -0.01  |
| Total group                  | 1,710.8  | -1.62          | -0.32  |
| Remaining goods and services | 8,289.2  | -0.04          | -0.03  |
| Total Index                  | 10,000.0 | -0.36          | -0.36  |

Source: Central Bureau of Statistics Aruba

## APPENDIX 1

## Monthly &amp; Yearly Changes (%) in the Consumer Price Index for October 2009, Total Population (Dec 2006 = 100)

| DESCRIPTION   | WEIGHT<br>coefficient | 2008<br>Oct  | 2008<br>Dec  | 2009<br>Sep  | 2009<br>Oct  | Monthly<br>Sep - Oct | Ytd<br>Dec - Oct | Yearly<br>Oct 08 - Oct 09 | Average<br>Oct 08 - Oct 09 |
|---|-----------------------|--------------|--------------|--------------|--------------|----------------------|------------------|---------------------------|----------------------------|
| <b>Food and non-alcoholic beverages</b>                           | <b>1,125.3</b>        | <b>134.2</b> | <b>135.9</b> | <b>134.6</b> | <b>134.5</b> | <b>-0.1</b>          | <b>-1.0</b>      | <b>0.2</b>                | <b>7.1</b>                 |
| Food  | 961.4                 | 137.4        | 139.1        | 136.9        | 136.8        | -0.1                 | -1.7             | -0.4                      | 7.4                        |
| Non-alcoholic beverages   | 163.9                 | 115.4        | 116.8        | 120.8        | 120.7        | -0.1                 | 3.4              | 4.6                       | 5.0                        |
| <b>Alcoholic beverages and tobacco</b>                            | <b>81.9</b>           | <b>109.2</b> | <b>109.4</b> | <b>113.8</b> | <b>113.9</b> | <b>0.1</b>           | <b>4.1</b>       | <b>4.3</b>                | <b>4.6</b>                 |
| Alcoholic beverages for consumption at home                       | 59.3                  | 107.2        | 107.2        | 110.4        | 110.4        | 0.1                  | 3.0              | 3.1                       | 4.3                        |
| Tobacco   | 22.6                  | 114.4        | 115.3        | 123.0        | 123.0        | 0.0                  | 6.7              | 7.5                       | 5.4                        |
| <b>Clothing and footwear</b>                                      | <b>625.9</b>          | <b>117.3</b> | <b>116.5</b> | <b>119.1</b> | <b>118.7</b> | <b>-0.3</b>          | <b>1.9</b>       | <b>1.3</b>                | <b>0.4</b>                 |
| Clothing  | 550.4                 | 119.7        | 118.8        | 121.7        | 121.2        | -0.4                 | 2.0              | 1.3                       | 0.4                        |
| Footwear  | 75.5                  | 99.6         | 99.8         | 100.6        | 100.7        | 0.1                  | 0.9              | 1.1                       | 0.0                        |
| <b>Housing</b>  | <b>2,553.3</b>        | <b>135.8</b> | <b>107.8</b> | <b>126.8</b> | <b>127.1</b> | <b>0.2</b>           | <b>17.8</b>      | <b>-6.5</b>               | <b>-10.7</b>               |
| Actual rentals for housing  | 854.2                 | 118.1        | 118.7        | 123.7        | 124.2        | 0.5                  | 4.6              | 5.2                       | 4.3                        |
| Maintenance and repair of the dwelling                            | 444.6                 | 106.5        | 105.7        | 108.8        | 109.3        | 0.5                  | 3.4              | 2.6                       | 1.7                        |
| Water supply and miscellaneous services relating to the dwelling  | 505.7                 | 158.9        | 103.4        | 134.3        | 134.3        | 0.0                  | 29.8             | -15.5                     | -20.8                      |
| Electricity, gas and other fuels                                  | 748.8                 | 158.0        | 99.7         | 136.0        | 136.0        | 0.0                  | 36.5             | -13.9                     | -22.2                      |
| <b>Household operation</b>  | <b>741.3</b>          | <b>106.0</b> | <b>104.7</b> | <b>108.3</b> | <b>107.7</b> | <b>-0.6</b>          | <b>2.8</b>       | <b>1.6</b>                | <b>2.8</b>                 |
| Furniture, furnishings, carpets and other floor coverings         | 142.1                 | 85.9         | 86.8         | 90.1         | 87.4         | -2.9                 | 0.7              | 1.7                       | 4.4                        |
| Household textiles  | 69.5                  | 144.3        | 146.3        | 150.9        | 150.8        | -0.1                 | 3.0              | 4.5                       | 5.4                        |
| Household appliances  | 111.3                 | 80.8         | 81.7         | 85.3         | 85.5         | 0.3                  | 4.6              | 5.9                       | 3.3                        |
| Glassware, tableware and household utensils                       | 31.8                  | 104.8        | 104.8        | 110.4        | 107.7        | -2.4                 | 2.7              | 2.8                       | 3.2                        |
| Tools and equipment for house and garden                          | 40.0                  | 103.4        | 102.9        | 102.5        | 101.8        | -0.7                 | -1.0             | -1.5                      | 1.7                        |
| Goods and services for routine household maintenance and cleaning | 346.6                 | 115.0        | 111.4        | 115.1        | 115.2        | 0.1                  | 3.4              | 0.2                       | 1.7                        |
| <b>Health</b>   | <b>235.8</b>          | <b>92.2</b>  | <b>92.2</b>  | <b>93.1</b>  | <b>92.9</b>  | <b>-0.2</b>          | <b>0.8</b>       | <b>0.8</b>                | <b>4.6</b>                 |
| Medical products, appliances and equipment                        | 140.3                 | 95.9         | 95.9         | 97.0         | 96.7         | -0.2                 | 0.9              | 0.9                       | 6.1                        |
| Out-patient services  | 57.2                  | 83.0         | 83.0         | 83.6         | 83.6         | 0.0                  | 0.7              | 0.7                       | 0.2                        |
| Hospital services   | 3.0                   | 92.2         | 92.2         | 93.2         | 92.9         | -0.4                 | 0.8              | 0.8                       | 4.9                        |
| Other treatments  | 20.6                  | 92.2         | 92.2         | 93.2         | 92.9         | -0.4                 | 0.8              | 0.8                       | 4.9                        |
| Health products and services n.e.c.                               | 0.5                   | 92.2         | 92.2         | 93.2         | 92.9         | -0.4                 | 0.8              | 0.8                       | 4.9                        |
| Other health related incurred costs                               | 14.1                  | 92.2         | 92.2         | 93.2         | 92.9         | -0.4                 | 0.8              | 0.8                       | 4.9                        |
| <b>Transport</b>  | <b>1,815.4</b>        | <b>120.3</b> | <b>102.4</b> | <b>109.4</b> | <b>107.4</b> | <b>-1.9</b>          | <b>4.9</b>       | <b>-10.7</b>              | <b>-7.2</b>                |
| Purchase of vehicles  | 811.4                 | 103.5        | 104.0        | 104.2        | 104.2        | 0.0                  | 0.2              | 0.6                       | 8.6                        |
| Operation of personal transport equipment                         | 840.1                 | 142.8        | 103.7        | 119.3        | 115.0        | -3.6                 | 10.9             | -19.5                     | -18.5                      |
| Transport services  | 163.8                 | 88.3         | 87.4         | 84.9         | 84.2         | -0.8                 | -3.7             | -4.6                      | -3.4                       |
| <b>Communications</b>   | <b>706.3</b>          | <b>83.5</b>  | <b>82.9</b>  | <b>83.2</b>  | <b>83.0</b>  | <b>-0.3</b>          | <b>0.1</b>       | <b>-0.6</b>               | <b>-1.0</b>                |
| Postal services   | 6.1                   | 105.3        | 103.6        | 105.2        | 105.2        | 0.0                  | 1.6              | 0.0                       | -0.6                       |
| Telephone and telefax equipment                                   | 29.6                  | 61.6         | 62.3         | 46.6         | 41.2         | -11.7                | -33.9            | -33.2                     | -17.2                      |
| Telephone and telefax services                                    | 670.6                 | 84.3         | 83.6         | 84.6         | 84.6         | 0.0                  | 1.2              | 0.4                       | -0.5                       |
| <b>Recreation and culture</b>                                     | <b>891.2</b>          | <b>111.3</b> | <b>110.1</b> | <b>113.5</b> | <b>113.1</b> | <b>-0.4</b>          | <b>2.7</b>       | <b>1.6</b>                | <b>2.4</b>                 |
| Audio-visual, photographic and information processing equipment   | 123.8                 | 105.4        | 108.2        | 112.1        | 112.3        | 0.2                  | 3.9              | 6.6                       | 8.1                        |
| Other major durables for recreation and culture                   | 19.2                  | 89.3         | 89.9         | 90.4         | 90.8         | 0.5                  | 1.1              | 1.7                       | 3.1                        |
| Other recreational items and equipment; gardens and pets          | 260.1                 | 129.6        | 127.7        | 134.8        | 134.4        | -0.3                 | 5.2              | 3.7                       | 3.5                        |
| Recreational and cultural services                                | 335.0                 | 100.3        | 99.1         | 102.1        | 102.1        | 0.0                  | 3.0              | 1.8                       | 1.8                        |
| Newspapers, books and stationery                                  | 82.1                  | 107.3        | 107.8        | 111.3        | 111.0        | -0.3                 | 3.0              | 3.4                       | 3.0                        |
| Holidays  | 71.0                  | 117.6        | 109.1        | 100.9        | 97.1         | -3.8                 | -11.0            | -17.5                     | -9.2                       |
| <b>Education</b>  | <b>83.0</b>           | <b>117.6</b> | <b>109.1</b> | <b>109.3</b> | <b>109.3</b> | <b>0.1</b>           | <b>0.3</b>       | <b>-7.0</b>               | <b>-3.9</b>                |
| Pre primary and primary education                                 | 30.4                  | 117.6        | 109.1        | 109.1        | 109.1        | 0.0                  | 0.0              | -7.3                      | -3.9                       |
| Secondary education   | 25.2                  | 117.6        | 109.1        | 109.5        | 109.7        | 0.2                  | 0.6              | -6.7                      | -3.8                       |
| Post-secondary non-tertiary education                             | 4.6                   | 117.6        | 109.1        | 109.4        | 109.5        | 0.1                  | 0.4              | -6.9                      | -3.9                       |
| Tertiary education  | 10.4                  | 117.6        | 109.1        | 109.1        | 109.1        | 0.0                  | 0.0              | -7.3                      | -3.9                       |
| Education not definable by level                                  | 12.4                  | 117.6        | 109.1        | 109.4        | 109.5        | 0.1                  | 0.4              | -6.9                      | -3.9                       |
| <b>Restaurants and hotels</b>                                     | <b>373.7</b>          | <b>113.9</b> | <b>114.4</b> | <b>117.7</b> | <b>119.3</b> | <b>1.4</b>           | <b>4.3</b>       | <b>4.8</b>                | <b>8.1</b>                 |
| Catering services   | 367.5                 | 113.8        | 114.5        | 118.1        | 119.8        | 1.4                  | 4.6              | 5.2                       | 8.4                        |
| Accommodation services  | 6.2                   | 117.3        | 109.5        | 91.3         | 92.0         | 0.8                  | -15.9            | -21.6                     | -9.6                       |
| <b>Miscellaneous goods and services</b>                           | <b>767.0</b>          | <b>97.6</b>  | <b>97.7</b>  | <b>100.1</b> | <b>99.7</b>  | <b>-0.4</b>          | <b>2.0</b>       | <b>2.1</b>                | <b>2.8</b>                 |
| Personal care   | 262.0                 | 105.6        | 107.1        | 111.0        | 110.9        | -0.1                 | 3.6              | 5.1                       | 5.7                        |
| Personal effects n.e.c.   | 67.3                  | 112.0        | 109.9        | 113.6        | 111.1        | -2.2                 | 1.1              | -0.8                      | 1.5                        |
| Social protection   | 28.7                  | 117.6        | 109.1        | 124.2        | 125.5        | 1.0                  | 15.0             | 6.7                       | 3.8                        |
| Insurance   | 289.1                 | 85.1         | 85.1         | 85.1         | 85.1         | 0.0                  | 0.0              | 0.0                       | 0.0                        |
| Financial services n.e.c.   | 26.9                  | 97.6         | 97.7         | 98.9         | 97.4         | -1.5                 | -0.2             | -0.2                      | 2.2                        |
| Other services n.e.c.   | 93.0                  | 97.6         | 97.7         | 98.9         | 97.4         | -1.5                 | -0.2             | -0.2                      | 2.2                        |
| <b>TOTAL INDEX</b>  | <b>10,000</b>         | <b>118.4</b> | <b>107.9</b> | <b>115.0</b> | <b>114.6</b> | <b>-0.4</b>          | <b>6.2</b>       | <b>-3.3</b>               | <b>-2.6</b>                |

Source: Central Bureau of Statistics Aruba

## APPENDIX 2

## Effect on the Consumer Price Index per sector and category for October 2009 (Dec 2006 = 100)

| DESCRIPTION   | WEIGHT<br>coefficient | Monthly<br>Sep - Oct | Ytd<br>Dec - Oct | Yearly<br>Oct 08 - Oct 09 | Average<br>Oct 08 - Oct 09 |
|---|-----------------------|----------------------|------------------|---------------------------|----------------------------|
| <b>Food and non-alcoholic beverages</b>                           | <b>1,125.3</b>        | <b>-0.01</b>         | <b>-0.15</b>     | <b>0.03</b>               | <b>0.88</b>                |
| Food  | 961.4                 | -0.01                | -0.21            | -0.05                     | 0.80                       |
| Non-alcoholic beverages   | 163.9                 | 0.00                 | 0.06             | 0.07                      | 0.08                       |
| <b>Alcoholic beverages and tobacco</b>                            | <b>81.9</b>           | <b>0.00</b>          | <b>0.03</b>      | <b>0.03</b>               | <b>0.04</b>                |
| Alcoholic beverages for consumption at home                       | 59.3                  | 0.00                 | 0.02             | 0.02                      | 0.02                       |
| Tobacco   | 22.6                  | 0.00                 | 0.02             | 0.02                      | 0.01                       |
| <b>Clothing and footwear</b>                                      | <b>625.9</b>          | <b>-0.02</b>         | <b>0.13</b>      | <b>0.08</b>               | <b>0.02</b>                |
| Clothing  | 550.4                 | -0.02                | 0.12             | 0.07                      | 0.02                       |
| Footwear  | 75.5                  | 0.00                 | 0.01             | 0.01                      | 0.00                       |
| <b>Housing</b>  | <b>2,553.3</b>        | <b>0.06</b>          | <b>4.55</b>      | <b>-1.89</b>              | <b>-3.13</b>               |
| Actual rentals for housing  | 854.2                 | 0.04                 | 0.43             | 0.44                      | 0.37                       |
| Maintenance and repair of the dwelling                            | 444.6                 | 0.02                 | 0.15             | 0.10                      | 0.07                       |
| Water supply and miscellaneous services relating to the dwelling  | 505.7                 | 0.00                 | 1.44             | -1.05                     | -1.38                      |
| Electricity, gas and other fuels                                  | 748.8                 | 0.00                 | 2.52             | -1.39                     | -2.19                      |
| <b>Household operation</b>  | <b>741.3</b>          | <b>-0.04</b>         | <b>0.20</b>      | <b>0.11</b>               | <b>0.19</b>                |
| Furniture, furnishings, carpets and other floor coverings         | 142.1                 | -0.03                | 0.01             | 0.02                      | 0.05                       |
| Household textiles  | 69.5                  | 0.00                 | 0.03             | 0.04                      | 0.05                       |
| Household appliances  | 111.3                 | 0.00                 | 0.04             | 0.04                      | 0.03                       |
| Glassware, tableware and household utensils                       | 31.8                  | -0.01                | 0.01             | 0.01                      | 0.01                       |
| Tools and equipment for house and garden                          | 40.0                  | 0.00                 | 0.00             | -0.01                     | 0.01                       |
| Goods and services for routine household maintenance and cleaning | 346.6                 | 0.00                 | 0.12             | 0.01                      | 0.06                       |
| <b>Health</b>   | <b>235.8</b>          | <b>0.00</b>          | <b>0.02</b>      | <b>0.01</b>               | <b>0.08</b>                |
| Medical products, appliances and equipment                        | 140.3                 | 0.00                 | 0.01             | 0.01                      | 0.07                       |
| Out-patient services  | 57.2                  | 0.00                 | 0.00             | 0.00                      | 0.00                       |
| Hospital services   | 3.0                   | 0.00                 | 0.00             | 0.00                      | 0.00                       |
| Other treatments  | 20.6                  | 0.00                 | 0.00             | 0.00                      | 0.01                       |
| Health products and services n.e.c.                               | 0.5                   | 0.00                 | 0.00             | 0.00                      | 0.00                       |
| Other health related incurred costs                               | 14.1                  | 0.00                 | 0.00             | 0.00                      | 0.01                       |
| <b>Transport</b>  | <b>1,815.4</b>        | <b>-0.32</b>         | <b>0.85</b>      | <b>-1.98</b>              | <b>-1.29</b>               |
| Purchase of vehicles  | 811.4                 | 0.00                 | 0.02             | 0.05                      | 0.59                       |
| Operation of personal transport equipment                         | 840.1                 | -0.31                | 0.88             | -1.97                     | -1.83                      |
| Transport services  | 163.8                 | -0.01                | -0.05            | -0.06                     | -0.04                      |
| <b>Communications</b>   | <b>706.3</b>          | <b>-0.01</b>         | <b>0.01</b>      | <b>-0.03</b>              | <b>-0.05</b>               |
| Postal services   | 6.1                   | 0.00                 | 0.00             | 0.00                      | 0.00                       |
| Telephone and telefax equipment                                   | 29.6                  | -0.01                | -0.06            | -0.05                     | -0.03                      |
| Telephone and telefax services                                    | 670.6                 | 0.00                 | 0.06             | 0.02                      | -0.03                      |
| <b>Recreation and culture</b>                                     | <b>891.2</b>          | <b>-0.03</b>         | <b>0.25</b>      | <b>0.14</b>               | <b>0.21</b>                |
| Audio-visual, photographic and information processing equipment   | 123.8                 | 0.00                 | 0.05             | 0.07                      | 0.09                       |
| Other major durables for recreation and culture                   | 19.2                  | 0.00                 | 0.00             | 0.00                      | 0.00                       |
| Other recreational items and equipment; gardens and pets          | 260.1                 | -0.01                | 0.16             | 0.11                      | 0.10                       |
| Recreational and cultural services                                | 335.0                 | 0.00                 | 0.09             | 0.05                      | 0.05                       |
| Newspapers, books and stationery                                  | 82.1                  | 0.00                 | 0.02             | 0.03                      | 0.02                       |
| Holidays  | 71.0                  | -0.02                | -0.08            | -0.12                     | -0.06                      |
| <b>Education</b>  | <b>83.0</b>           | <b>0.00</b>          | <b>0.00</b>      | <b>-0.06</b>              | <b>-0.03</b>               |
| Pre primary and primary education                                 | 30.4                  | 0.00                 | 0.00             | -0.02                     | -0.01                      |
| Secondary education   | 25.2                  | 0.00                 | 0.00             | -0.02                     | -0.01                      |
| Post-secondary non-tertiary education                             | 4.6                   | 0.00                 | 0.00             | 0.00                      | 0.00                       |
| Tertiary education  | 10.4                  | 0.00                 | 0.00             | -0.01                     | 0.00                       |
| Education not definable by level                                  | 12.4                  | 0.00                 | 0.00             | -0.01                     | 0.00                       |
| <b>Restaurants and hotels</b>                                     | <b>373.7</b>          | <b>0.05</b>          | <b>0.17</b>      | <b>0.17</b>               | <b>0.28</b>                |
| Catering services   | 367.5                 | 0.05                 | 0.18             | 0.19                      | 0.29                       |
| Accommodation services  | 6.2                   | 0.00                 | -0.01            | -0.01                     | -0.01                      |
| <b>Miscellaneous goods and services</b>                           | <b>767.0</b>          | <b>-0.03</b>         | <b>0.14</b>      | <b>0.13</b>               | <b>0.18</b>                |
| Personal care   | 262.0                 | 0.00                 | 0.09             | 0.12                      | 0.14                       |
| Personal effects n.e.c.   | 67.3                  | -0.01                | 0.01             | -0.01                     | 0.01                       |
| Social protection   | 28.7                  | 0.00                 | 0.04             | 0.02                      | 0.01                       |
| Insurance   | 289.1                 | 0.00                 | 0.00             | 0.00                      | 0.00                       |
| Financial services n.e.c.   | 26.9                  | 0.00                 | 0.00             | 0.00                      | 0.01                       |
| Other services n.e.c.   | 93.0                  | -0.01                | 0.00             | 0.00                      | 0.02                       |
| <b>TOTAL INDEX</b>  | <b>10,000</b>         | <b>-0.36</b>         | <b>6.20</b>      | <b>-3.26</b>              | <b>-2.62</b>               |

Source: Central Bureau of Statistics Aruba