

6 June 2008

Consumer Price Index, base September 2000 May 2008

The Central Bureau of Statistics presents the most important findings for the Consumer Price Index for the month of May 2008.

- The consumer price index for May 2008 is **136.84**, this is **0.83%** higher compared with the index of April 2008 (**135.72**).
- The percentage change for the first 5 months (January to May 2008) of the consumer price index is 3.11%, compared to 4.52% for the same period of last year.
- The percentage change over the last 12 months (May 2007 to May 2008) is 8.72%, an increase of 4.31 percentage points compared to the percentage change for the same period of last year (4.41%).
- The period average percentage change CPI for the period May 2007 - May 2008 is 7.64%, an increase of 3.84 percentage points compared to the period average percentage change over the period May 2006 - May 2007 (3.80%).

Table 1 Overview percentage change CPI

Period		2008	2007
Current month	Apr-May	0.83	0.91
Year-to-date	Jan-May	3.11	4.52
Last 12 months ¹	May-May	8.72	4.41
Last 24 months ²	May-May	7.64	3.80

Source: Central Bureau of Statistics Aruba

¹ End of period inflation

² Period average inflation

In May the sectors that show a higher positive percentage change compared to the change of the CPI (0.83%) are:

- Transport and communication
- Food
- Leisure and recreational goods
- Goods and services n.e.c.
- Household operation

Table 2 Percentage change by sector

Sector	Percentage changes			
	Monthly May	Year to date January - May	End of period May 07 - May 08	Period average May 07 - May 08
Consumer Price Index	0.83	3.11	8.72	7.64
Food	1.18	3.90	6.98	9.25
Beverages and tobacco products	(0.12)	1.55	2.91	10.62
Clothing and footwear	0.34	3.01	11.10	3.30
Housing	0.31	2.62	14.94	12.11
Household operation	0.45	1.58	1.54	4.14
Health	0.00	0.38	0.34	(0.01)
Transport and communication	1.97	5.03	7.87	6.39
Leisure and recreational goods	0.81	2.49	6.53	6.34
Goods and services n.e.c.	0.77	2.21	5.99	5.78

Source: Central Bureau of Statistics Aruba

Monthly Percentage Change

The prices of goods and services in the consumption basket of the CPI show an increase of **0.83%** for the month of May 2008 compared to the prices observed in April 2008.

The consumption basket of the CPI consists of 374 goods and services. Compared to April, 60.2% of these products had an increase in price, while 18.4% showed a decrease and the remaining 21.4% had no change in price.

In May 2008, the sectors that had the most influence in the percentage change of the CPI are:

- Transport and communication, where increases in prices were mainly registered in the categories of own transport and vehicle supplies.
- Food, where increases in prices were mainly registered in the categories potatoes, vegetables and fruit and grain and grain products.
- Housing, where increases in prices were mainly registered in the category property maintenance goods.

Positive Effect

Category	Monthly change	Effect
Own transport	3.38	0.18
Vehicle supplies	2.45	0.13
Clothing and accessories	0.39	0.06
Property maintenance goods	0.94	0.05
Potatoes, vegetables and fruit	2.70	0.04

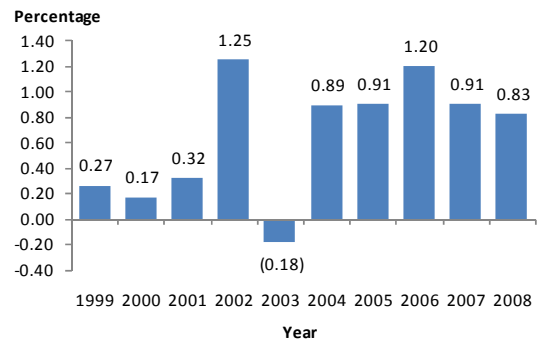
Source: Central Bureau of Statistics Aruba

Negative Effect

Category	Monthly change	Effect
Household supplies	-0.66	-0.01
Beverages	-0.15	-0.01
Fats and oils	-0.20	0.00

Source: Central Bureau of Statistics Aruba

Graph 1 Monthly percentage change of the CPI for May, 1999 – 2008

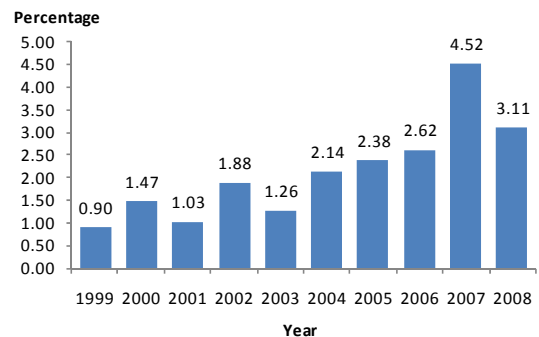


When analyzing the series of the Consumer Price Index for the month of May for the last 10 years, the one of 2008 had the sixth highest change.

Year-to-date Percentage Change

The year-to-date percentage change from January to May 2008 is 3.11% (Table 1). The sectors which mainly had effect on the percentage change of this period due to changes registered in the prices of goods and services are Transport and communication (0.32%), Food (0.16%), Housing (0.08%) and Goods and services n.e.c. (0.08%).

Graph 2 Year-to-date percentage change of the CPI for January to May, 1999 – 2008



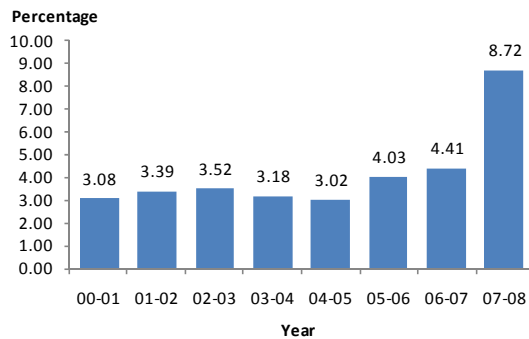
Percentage Changes last 12 and 24 Months

Table 4 Percentage changes by month, 2007 – 2008

Sector	Percentage changes							
	2007				2008			
	Monthly	Year to date	End of period	Period average	Monthly	Year to date	End of period	Period average
	May	Jan-May	May06-May07	May06-May07	May	Jan-May	May07-May08	May07-May08
January	2.62	2.62	4.82	3.66	0.63	0.63	8.06	6.27
February	0.04	2.67	4.14	3.63	0.64	1.27	8.71	6.66
March	0.69	3.38	5.03	3.68	0.47	1.75	8.47	6.94
April	0.19	3.58	4.71	3.76	0.50	2.26	8.80	7.28
May	0.91	4.52	4.41	3.80	0.83	3.11	8.72	7.64
June	1.80	6.40	5.97	3.96				
July	(0.32)	6.06	5.42	4.08				
August	0.68	6.79	5.68	4.21				
September	0.10	6.89	5.77	4.36				
October	0.31	7.22	7.27	4.82				
November	1.15	8.45	8.54	5.37				
December	1.62	10.21	10.21	6.00				

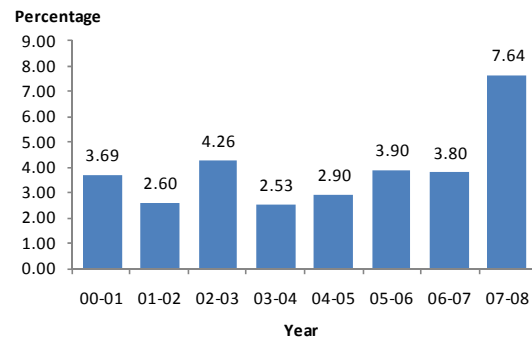
Source: Central Bureau of Statistics Aruba

Graph 3 Percentage change of the CPI (last 12 months) May to May, 2000 – 2008



The percentage change of the CPI (last 12 months/end of period) 8.72%, is the highest change registered in the last 8 years.

Graph 4 Average Percentage change of the CPI (last 24 months) May to May, 2000 - 2008



The average percentage change of the CPI (last 24 months/ period average) 7.64 %, is also the highest change registered in the last 8 years.

APPENDIX 1

Monthly & Yearly Changes (%) for May 2008 for the Consumer Price Index, Total Population (Sep 2000 = 100)

DESCRIPTION	WEIGHT coefficient	2007 May	2007 Dec	2008 Apr	2008 May	Monthly change Apr-May	YTD change Jan-May	Yearly change May-May	Average change May 07-08
Food	1,469	136.8	140.9	144.7	146.4	1.18	3.90	6.98	9.25
Grain and grain products	233	122.6	125.7	127.8	129.8	1.59	3.26	5.88	7.87
Meat, poultry, game, fish and shellfish	320	133.0	136.9	143.5	143.6	0.04	4.88	7.97	8.93
Fats and oils	28	126.0	132.5	135.8	135.5	-0.20	2.30	7.59	5.40
Dairy products	149	145.4	166.7	180.9	183.8	1.56	10.24	26.43	17.29
Potatoes, vegetables and fruit	176	184.7	194.6	198.6	204.0	2.70	4.82	10.45	18.48
Sugar, sugarproducts and chocolate	30	116.4	112.6	115.1	117.2	1.81	4.07	0.70	1.24
Ready to eat meals	29	115.2	116.7	116.3	119.7	2.95	2.58	3.93	4.67
Take away beverages and meals	399	130.9	127.7	126.7	127.5	0.57	-0.17	-2.62	2.78
Groceries n.e.c.	104	125.3	127.3	130.7	132.8	1.54	4.26	5.98	8.60
Beverages and tobacco products	219	129.3	131.1	133.3	133.1	-0.12	1.55	2.91	10.62
Beverages	192	128.6	130.5	132.5	132.3	-0.15	1.32	2.83	11.37
Tobacco products	27	134.5	135.0	139.1	139.2	0.07	3.16	3.48	5.74
Clothing and footwear group	1,086	127.5	137.5	141.2	141.7	0.34	3.01	11.10	3.30
Clothing and accessories	881	130.6	141.1	145.5	146.1	0.39	3.50	11.85	3.55
Footwear	204	114.2	122.0	122.6	122.7	0.07	0.57	7.40	2.10
Housing group	2,296	133.0	148.9	152.4	152.8	0.31	2.62	14.94	12.11
Property Rent	717	135.3	138.1	139.7	140.1	0.29	1.46	3.53	3.53
Domestic Fuel and power	659	129.6	160.5	165.9	166.0	0.06	3.41	28.12	19.15
Property maintenance goods	500	128.8	130.1	131.3	132.6	0.94	1.86	2.95	7.09
Garden Supplies	61	173.6	182.2	187.6	189.2	0.83	3.85	8.95	13.04
Water Supply	358	133.3	169.8	176.1	176.1	0.00	3.71	32.11	22.49
Household operation group	1,002	124.1	124.0	125.4	126.0	0.45	1.58	1.54	4.14
Furniture and lighting	133	115.6	102.1	102.6	104.5	1.94	2.36	-9.56	-1.77
Floor coverings and household textiles	113	147.7	155.5	160.5	160.5	-0.01	3.19	8.62	13.90
Home appliances and tools	163	107.3	96.0	97.7	97.7	0.00	1.84	-8.92	-11.71
Household equipment and utensils	75	120.4	122.1	123.8	125.7	1.48	2.89	4.38	4.44
Household services	118	119.0	120.5	124.1	124.5	0.29	3.34	4.64	6.69
Housekeeping charges	227	127.2	133.7	136.8	138.0	0.87	3.21	8.50	7.84
Household supplies	173	132.1	137.5	133.0	132.2	-0.66	-3.87	0.06	8.02
Health group	88	99.9	99.9	100.3	100.3	0.00	0.38	0.34	-0.01
Health services	88	99.9	99.9	100.3	100.3	0.00	0.38	0.34	-0.01
Transport and communication group	1,967	116.7	119.9	123.5	125.9	1.97	5.03	7.87	6.39
Own transport	544	102.4	107.7	113.6	117.4	3.38	9.02	14.66	4.99
Vehicle supplies	712	141.9	146.6	151.9	155.6	2.45	6.17	9.67	10.78
Public Transport costs	249	105.5	106.4	106.8	107.0	0.14	0.52	1.39	2.69
Communication Services	462	100.9	100.4	100.3	100.3	0.01	-0.01	-0.53	1.25
Leisure and recreational goods	799	119.9	124.7	126.7	127.8	0.81	2.49	6.53	6.34
Costs incurred for recreational purposes	465	120.8	124.9	127.0	128.0	0.73	2.46	5.90	7.22
Admission charges to events and venues	89	125.9	132.7	135.7	136.8	0.83	3.11	8.72	7.64
Publications (no study material)	51	129.8	132.7	132.4	133.1	0.54	0.34	2.56	6.02
Formal education fees	193	112.4	118.3	120.4	121.7	1.09	2.89	8.23	3.60
Goods and services n.e.c.	1,074	118.3	122.7	124.4	125.4	0.77	2.21	5.99	5.78
Toiletries and cosmetics	219	117.4	122.6	124.0	125.7	1.35	2.55	7.11	8.08
Insurance services	283	104.6	104.6	104.6	104.6	0.00	0.00	0.00	0.00
Other goods and services n.e.c.	438	125.3	131.3	134.0	135.1	0.87	2.92	7.88	7.36
Money Transfers	103	125.9	132.7	135.7	136.8	0.83	3.11	8.72	7.64
Unknown artic or not elsewhere classified	29	125.9	132.7	135.7	136.8	0.83	3.11	8.72	7.64
TOTAL INDEX	10,000	125.9	132.7	135.7	136.8	0.83	3.11	8.72	7.64

Source: Central Bureau of Statistics Aruba

APPENDIX 2

Effect on the Consumer Price Index per sector and category for May 2008 (Sep 2000 = 100)

DESCRIPTION	WEIGHT coefficient	Effect Apr-May	Effect Jan-May	Effect May-May	Effect May 07-08
Food	1,469	0.16	0.58	1.00	1.28
Grain and grain products	233	0.04	0.08	0.15	0.20
Meat, poultry, game, fish and shellfish	320	0.01	0.18	0.27	0.31
Fats and oils	28	0.00	0.01	0.02	0.02
Dairy products	149	0.02	0.17	0.39	0.26
Potatoes, vegetables and fruit	176	0.04	0.08	0.19	0.25
Sugar, sugarproducts and chocolate	30	0.01	0.01	0.00	0.00
Ready to eat meals	29	0.01	0.01	0.01	0.02
Take away beverages and meals	399	0.02	-0.01	-0.11	0.12
Groceries n.e.c.	104	0.02	0.05	0.07	0.10
Beverages and tobacco products	219	-0.01	0.03	0.07	0.24
Beverages	192	-0.01	0.02	0.06	0.23
Tobacco products	27	0.00	0.01	0.01	0.02
Clothing and footwear	1,086	0.06	0.34	1.20	0.35
Clothing and accessories	881	0.06	0.33	1.04	0.30
Footwear	204	0.01	0.01	0.16	0.05
Housing	2,296	0.08	0.60	3.66	2.97
Property Rent	717	0.02	0.11	0.27	0.27
Domestic Fuel and power	659	0.00	0.23	1.95	1.36
Property maintenance goods	500	0.05	0.10	0.17	0.38
Garden Supplies	61	0.00	0.02	0.05	0.07
Water Supply	358	0.00	0.14	1.22	0.88
Household operation	1,002	0.07	0.18	0.08	0.36
Furniture and lighting	133	0.03	0.05	-0.14	-0.03
Floor coverings and household textiles	113	0.01	0.03	0.07	0.14
Home appliances and tools	163	0.00	0.03	-0.15	-0.22
Household equipment and utensils	75	0.01	0.02	0.04	0.04
Household services	118	0.00	0.04	0.06	0.09
Housekeeping charges	227	0.02	0.08	0.20	0.19
Household supplies	173	-0.01	-0.07	0.00	0.15
Health	88	0.00	0.00	0.00	0.00
Health services	88	0.00	0.00	0.00	0.00
Transport and communication	1,967	0.32	0.93	1.50	1.24
Own transport	544	0.18	0.52	0.85	0.30
Vehicle supplies	712	0.13	0.40	0.66	0.81
Public Transport costs	249	0.00	0.01	0.03	0.07
Communication Services	462	0.00	0.00	-0.03	0.07
Leisure and recreational goods	799	0.07	0.20	0.56	0.53
Costs incurred for recreational purposes	465	0.03	0.12	0.30	0.36
Admission charges to events and venues	89	0.01	0.03	0.08	0.08
Publications (no study material)	51	0.00	0.00	0.02	0.03
Formal education fees	193	0.02	0.06	0.16	0.06
Goods and services n.e.c.	1,074	0.08	0.24	0.65	0.66
Toiletries and cosmetics	219	0.03	0.06	0.16	0.20
Insurance services	283	0.00	0.00	0.00	0.00
Other goods and services n.e.c.	438	0.04	0.13	0.37	0.35
Money Transfers	103	0.01	0.03	0.10	0.09
Unknown artic or not elsewhere classified	29	0.00	0.01	0.03	0.02
TOTAL INDEX	10,000	0.83	3.11	8.72	7.64

Source: Central Bureau of Statistics Aruba