

Fig. 1 Population change by age, Census 2000–2011, 1st Qtr

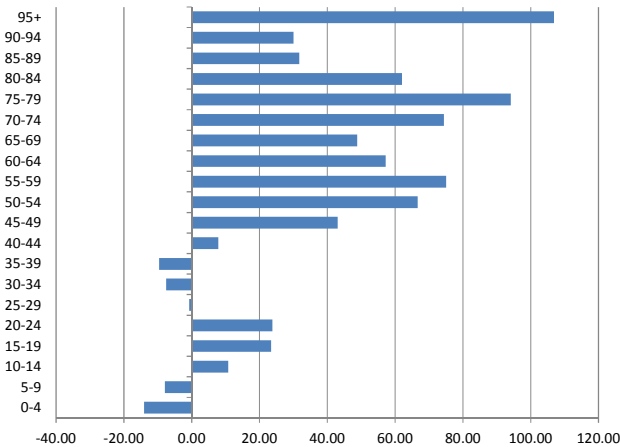


Table 2 Live births by age of mother

	2008	2009	2010	1st Q			
				2008	2009	2010	2011
<15 yrs.	5	2	0	1	1	0	1
15-19 yrs.	142	146	149	32	45	39	30
20-24 yrs.	309	284	279	82	77	69	52
25-29 yrs.	286	322	275	57	89	49	54
30-34 yrs.	252	269	264	64	84	64	60
35-39 yrs.	177	158	128	47	45	33	25
40-44 yrs.	46	32	37	12	7	7	5
45-49 yrs.	1	0	1	0	0	0	0
50+ yrs.	0	0	0	0	0	0	0
Not reported	0	0	0	0	0	0	0
Total	1,218	1,213	1,133	295	348	261	227

Source: Population Registry Office

Population estimates are calculated based on the census 2000 and changes recorded at the Population Registry Office during the succeeding years. Since 2000, the Population Registry registered 12,221 births, 5,226 deaths, 29,666 persons entering Aruba and 20,581 persons leaving.

At the end of the first quarter 2011, the estimated population totaled 108,082 persons. The most dramatic change since the last census is the slowly but surely growth of the group of elderly and the decreasing number of children 15 years and younger.

Table 4 Countries with the youngest and oldest populations, 2010

YOUNGEST	% AGES <15	OLDEST	% AGES 65+
Niger	50.1	Japan	22.6
Uganda	48.7	Germany	20.5
Burkina Faso	46.4	Italy	20.4
Congo, Dem Rep.	46.4	Sweden	18.3
Zambia	46.2	Greece	18.3
Malawi	45.9	Portugal	17.9
Afghanistan	45.9	Bulgaria	17.6
Chad	45.6	Austria	17.6
Somalia	44.9	Latvia	17.4
Tanzania	44.7	Belgium	17.4
Aruba	18.9	Aruba	10.1

Source: 2010 World Population Data Sheet, Population Reference Bureau.

Table 1 Population by age and sex

	End of year			1st Q 2011			Index (2000=100)
	2008	2009	2010	Male	Female	Total	
0-4 yrs.	6,325	6,306	6,129	3,092	2,950	6,042	-14.03
5-9 yrs.	7,004	6,800	6,635	3,385	3,237	6,623	-7.90
10-14 yrs.	7,750	7,687	7,554	3,812	3,713	7,525	10.77
15-19 yrs.	7,519	7,504	7,599	3,884	3,775	7,659	23.45
20-24 yrs.	6,090	6,229	6,252	3,253	3,094	6,347	23.80
25-29 yrs.	6,372	6,369	6,320	3,082	3,257	6,339	-0.69
30-34 yrs.	7,197	7,278	7,273	3,398	3,866	7,264	-7.49
35-39 yrs.	8,790	8,618	8,312	3,908	4,338	8,246	-9.63
40-44 yrs.	9,393	9,228	9,180	4,382	4,814	9,196	7.88
45-49 yrs.	9,871	10,065	10,057	4,778	5,253	10,031	43.07
50-54 yrs.	8,354	8,680	9,034	4,251	4,862	9,112	66.68
55-59 yrs.	6,535	6,912	7,173	3,360	3,881	7,242	75.12
60-64 yrs.	4,890	5,117	5,437	2,560	2,933	5,493	57.19
65-69 yrs.	3,596	3,701	3,878	1,807	2,125	3,932	48.83
70-74 yrs.	2,802	2,883	2,988	1,286	1,714	3,000	74.38
75-79 yrs.	1,836	1,940	2,023	821	1,234	2,056	94.20
80-84 yrs.	938	1,028	1,143	445	719	1,164	62.05
85-89 yrs.	489	482	488	184	315	499	31.74
90-94 yrs.	202	204	222	59	152	211	30.05
95+ yrs.	97	97	97	22	80	102	106.88
Total	106,050	107,138	107,795	51,769	56,313	108,082	18.69

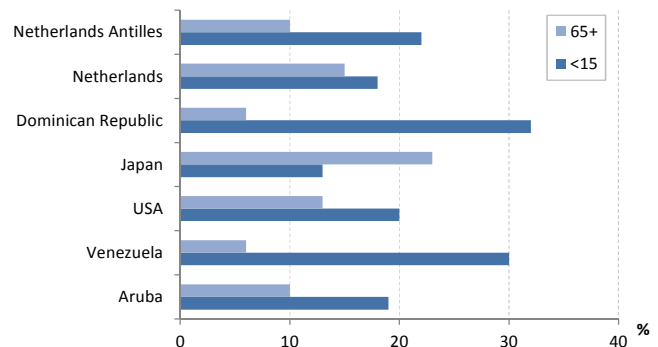
Source: Population Registry Office

Table 3 Deaths by age

	2008	2009	2010	1st Q			
				2008	2009	2010	2011
<1 yrs.	2	5	4	0	0	0	2
1-49 yrs.	62	74	59	18	15	14	12
50-59 yrs.	68	65	76	13	21	24	28
60-69 yrs.	94	94	94	22	23	23	23
70-79 yrs.	150	150	150	44	46	46	46
80-89 yrs.	108	108	108	35	36	36	36
90+ yrs.	39	39	39	6	8	8	8
Total	523	535	530	138	149	151	155

Source: Population Registry Office

Fig. 2 Percentage <15 and 65+ for selected countries, 2010



Source: 2010 World Population Data Sheet, Population Reference Bureau.

In 2006 the government introduced a more strict migration policy in order to limit the number of migrants. According to the LTU, new-comers could only stay for a period of three years. On average about 3,500 register at the Population Registry per year. Since 2006 the number of immigrants dropped to being less than 2,000 in both 2006 and 2007. And even though the number of immigrants has increased again since 2008, the numbers still do not reach the average 3,500 it used to be.

Remarkable though is that even as the number of people deregistering seem to concur with the new policy, the majority of persons leaving the island are locals. The increase in 2009 is 12.0 percent for the local-born and 15.8 percent for the foreign born. In 2010 however the number of local-born persons increased further with 7 percent, while the number foreign-born persons dropped with 3.8 percent.

For the first quarter of 2011 though the number of emigrants is showing an increase of 24 percent compared to the first quarter of 2010.

Table 7 Key Demographic Indicators

	Unit	Census 1991	Census 2000	End of year 2010
Total population		66,687	90,506	107,795
Male population		32,821	43,434	51,658
Female population		33,866	47,072	56,137
Mean age				
Total population		32.5	33.7	37.6
Male population		31.5	32.8	36.5
Female population		33.5	34.6	38.6
Functional Age-Groups				
0-14 yrs	%	24.4	23.2	18.8
15-64 yrs	%	68.5	69.5	71.1
65+ yrs	%	7.1	7.3	10.1
Total Dependency Ratio		46.0	43.9	40.7
Child Dependency Ratio (0-14/15-64)		35.7	33.3	26.5
Old-age Dependency Ratio (65+/15-64)		10.4	10.6	14.1
Index of ageing (60+/0-14)		40.7	48.7	80.1
Sex Ratio	p/100	96.9	92.3	92.0
Crude Birth rate (CBR)	p/1000	17.2	14.3	10.5
Total Fertility Rate (TFR)		2.3	1.9	1.6
Teenage Fertility Rate (15-19 yrs)	p/1000	50.1	52.0	39.9
Crude Death rate (CDR)	p/1000	6.3	5.8	5.7
Total Emigration		1,887	3,368	2,373
Emigration rate	p/1000	28.6	37.1	22.1
Total Immigration		4,229	3,535	2,507
Immigration rate	p/1000	64.1	39.0	23.3
Growth rate population	p/1000	46.6	10.3	6.1
Population density	Km ²	371	503	599

Table 5 Domiciliation by nationality and place of birth

	2008	2009	2010	1st Q			
				2008	2009	2010	2011
Dutch born in Aruba/NA	643	652	616	126	146	147	166
Dutch born in the Neth.	510	566	563	113	115	105	107
Dutch born elsewhere	151	147	172	33	47	25	48
Foreign-born	1,509	1,408	1,089	381	510	261	332
Unknown	72	60	51	16	24	14	9
Total	2,885	2,833	2,491	669	842	552	662

Source: Population Registry Office

Table 6 Departures by nationality and place of birth

	2008	2009	2010	1st Q			
				2008	2009	2010	2011
Dutch born in Aruba/NA	1,059	1,180	1,266	128	173	176	229
Dutch born in the Neth.	451	543	519	44	61	71	74
Dutch born elsewhere	251	247	273	34	46	37	63
Foreign-born	291	363	315	44	82	53	63
Unknown	1	0	0	1	0	0	0
Total	2,053	2,333	2,373	251	362	337	429

Source: Population Registry Office

Fig. 3 Immigration by place of birth, 2000-2010

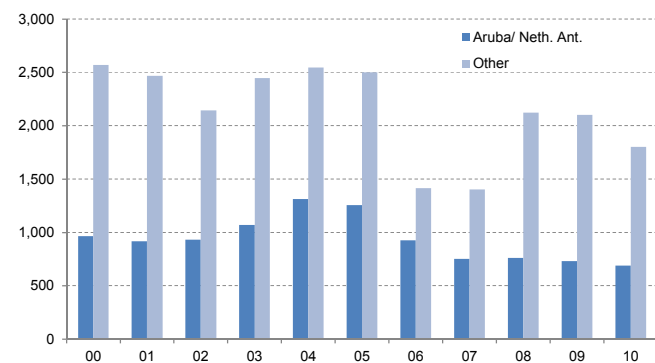
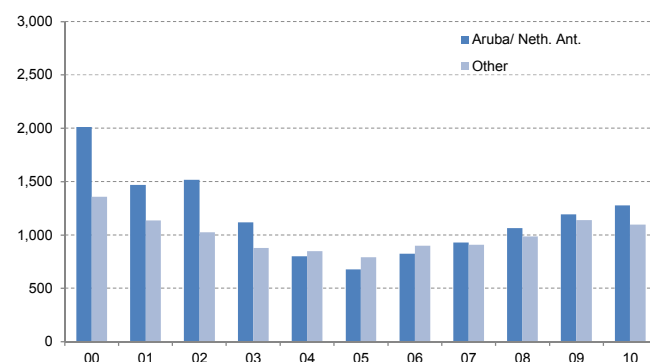


Fig. 4 Emigration by place of birth, 2000-2010



Note: due to technical difficulties data on marriages and divorces are not published.