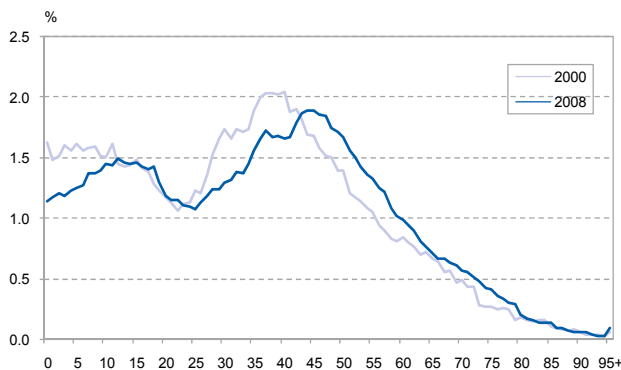
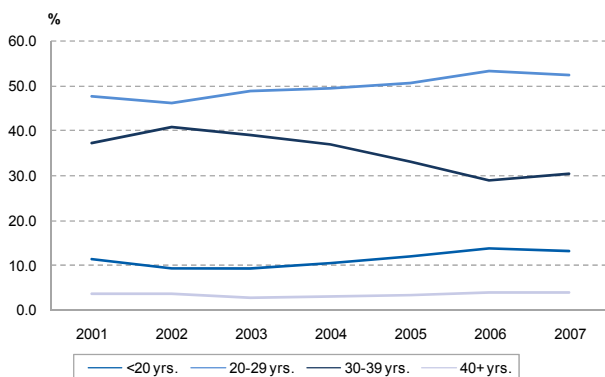


- At the end of the first quarter of 2008, the population totaled 105,078 persons, 1,305 persons more than at the end of the first quarter in 2007.
- 20.2 percent of the population is younger than 15 years of age. 70.6 percent is in the working age group, 15-64 years. And 9.1 percent is 65 years or older.
- In the younger ages, 0-14 years, there are more boys than girls. About 70 percent of both men and women is in the working age category. In the older ages, 65+, there are more women than men.

Figure 1. Population 2000-1st quarter 2008

Figure 2. Relative number of babies registered 1997-2007


- During the first quarter of 2008 there were 275 babies registered at the Population Registry Office.
- 11.3 percent of these babies were born to a teenage mother.
- 52 percent of the registered babies were born out of wedlock.
- By the end of first quarter of 2008 there were 138 persons who passed away.
- 22.5 percent were younger than 60 years of age.

Table 1 Population by age and sex

	End of year			1st Q 2008			Index (2000=100)
	2005	2006	2007	Male	Female	Total	
0-4 yrs.	6,506	6,408	6,381	3,260	3,099	6,359	-9.53
5-9 yrs.	7,459	7,339	7,141	3,589	3,537	7,126	-0.89
10-14 yrs.	7,698	7,736	7,770	3,958	3,824	7,782	14.56
15-19 yrs.	7,135	7,258	7,415	3,779	3,711	7,490	20.74
20-24 yrs.	5,818	5,980	6,017	3,029	3,058	6,087	18.72
25-29 yrs.	6,359	6,349	6,253	2,988	3,289	6,277	-1.67
30-34 yrs.	7,807	7,477	7,288	3,416	3,867	7,283	-7.24
35-39 yrs.	8,872	8,910	8,880	4,170	4,689	8,859	-2.91
40-44 yrs.	9,932	9,765	9,500	4,486	5,004	9,489	11.33
45-49 yrs.	9,018	9,385	9,630	4,593	5,100	9,693	38.24
50-54 yrs.	7,253	7,589	7,926	3,707	4,335	8,042	47.09
55-59 yrs.	5,530	5,860	6,194	2,952	3,334	6,285	51.99
60-64 yrs.	4,097	4,369	4,634	2,173	2,529	4,701	34.54
65-69 yrs.	3,324	3,366	3,476	1,608	1,900	3,508	32.79
70-74 yrs.	2,404	2,576	2,663	1,117	1,575	2,692	56.52
75-79 yrs.	1,480	1,591	1,786	738	1,061	1,799	69.95
80-84 yrs.	794	843	829	334	513	848	18.04
85-89 yrs.	443	400	458	180	287	467	23.32
90-94 yrs.	175	192	193	50	148	198	21.98
95+ yrs.	74	93	89	20	72	92	85.29
Total	102,178	103,488	104,523	50,146	54,932	105,078	15.39

Source: Population Registry Office

Table 2 Live births by age of mother

	2006	2007	YTD 2008	1st Q			
				2005	2006	2007	2008
< 15 yrs.	3	3	1	0	0	0	1
15-19 yrs.	152	149	30	35	41	0	30
20-24 yrs.	309	305	81	54	74	40	81
25-29 yrs.	316	314	53	91	83	71	53
30-34 yrs.	234	280	56	59	52	85	56
35-39 yrs.	165	149	44	35	33	57	44
40-44 yrs.	47	36	10	10	11	33	10
45-49 yrs.	1	2	0	0	1	11	0
50+ yrs.	0	0	0	0	0	1	0
Not reported	0	1	0	0	0	0	0
Total	1,227	1,239	275	284	295	298	275

Source: Population Registry Office

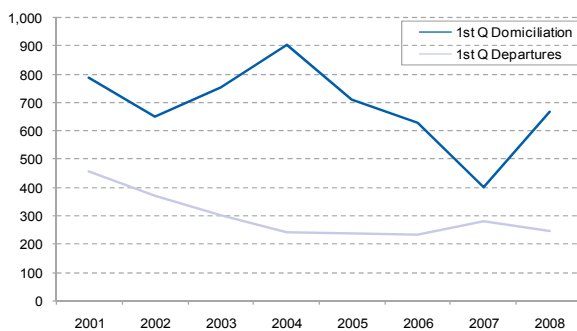
Table 3 Deaths by age

	2006	2007	YTD 2008	1st Q			
				2005	2006	2007	2008
< 1 yrs.	8	4	0	1	4	3	0
1-49 yrs.	70	68	18	14	14	17	18
50-59 yrs.	43	70	13	15	12	13	13
60-69 yrs.	115	100	22	20	28	33	22
70-79 yrs.	143	120	44	29	37	26	44
80-89 yrs.	114	94	35	27	30	26	35
90+ yrs.	44	65	6	10	6	13	6
Total	537	521	138	116	131	131	138

Source: Population Registry Office

- A total of 6 traffic fatalities were registered during the first quarter of 2008, which is 4.3 percent of all deaths.
- All these traffic fatalities were men younger than 61 years of age.

- At the end of the first quarter of 2008 the number of persons registering at the Population Registry Office totaled 669.
- An increase of 66.8 percent compared to the number of immigrants in 2007, the lowest recorded number during the first quarters of the last 10 years.
- On average 31.1 percent of the immigrants coming the last 7 years, are born in Aruba. During the 1st quarter of 2008 their share was 23.9 percent of all immigrants.
- 53.4 percent of the immigrants were men.

Figure 3. Migration, 1st quarter 2001-2008 (absolute)

Table 7 Divorces by residency and place of divorce

	2006	2007	YTD 2008	1st Q			
				2005	2006	2007	2008
Both partners residents, divorced in Aruba	455	356	75	82	110	104	75
Both partners residents, divorced elsewhere	1	1	0	1	0	0	0
Both partners non-residents, divorced in Aruba	2	0	0	0	0	0	0
Male resident, divorced elsewhere with non-resident Female	11	7	0	6	3	4	0
Male resident, divorced in Aruba with non-resident Female	22	25	5	11	3	3	5
Female resident, divorced elsewhere with non-resident Male	6	2	0	5	3	1	0
Female resident, divorced in Aruba with non-resident Male	33	26	6	9	5	7	6
Unknown	1	0	0	0	0	0	0
Total	531	417	86	114	124	119	86

Source: Population Registry Office

Table 4 Domiciliation by nationality and place of birth

	2006	2007	YTD 2008	1st Q			
				2005	2006	2007	2008
Dutch born in Aruba/N.A.	847	638	126	248	221	130	126
Dutch born in the Neth.	623	465	113	131	156	85	113
Dutch born elsewhere	192	143	33	41	48	34	33
Foreign-born	600	839	381	290	199	131	381
Unknown	79	72	16	0	7	21	16
Total	2,341	2,157	669	710	631	401	669

Source: Population Registry Office

Table 5 Departures by nationality and place of birth

	2006	2007	YTD 2008	1st Q			
				2005	2006	2007	2008
Dutch born in Aruba/N.A.	813	921	128	112	104	130	128
Dutch born in the Neth.	513	455	44	41	55	74	44
Dutch born elsewhere	159	202	34	33	22	36	34
Foreign-born	237	260	44	53	55	43	44
Unknown	0	1	1	0	0	0	1
Total	1,722	1,839	251	239	236	283	251

Source: Population Registry Office

Table 6 Marriages by residency

	2006	2007	YTD 2008	1st Q			
				2005	2006	2007	2008
Resident marriages	546	531	-	136	122	95	-
Non-resident marriages	460	482	-	88	87	73	-
Residency unknown	22	-	-	10	2	-	-
Total	1,006	1,013	176	234	211	168	176

Source: Population Registry Office

- 251 persons de-registered from the Population Registry Office during the first quarter of 2008.
- 51 percent was local (Dutch born in Aruba/Netherlands Antilles).
- 43 percent are women of whom 81.5 percent were aged between 20 thru 59 years.
- Of the men, 79 percent are in the age group 20 thru 59 years.
- A total of 176 marriages and 86 divorce cases were registered during the first quarter.
- In 50 percent of the registered divorce cases, the marriage lasted for less than 10 years. 9.3 percent were married for more than 25 years.