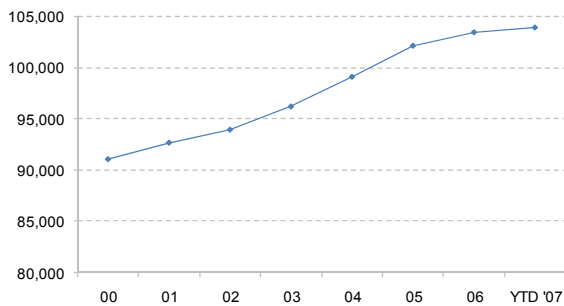


- The population as of the end of 31st of September totals 103,929 persons.
- There are 54,339 women and 49,590 men; resulting in a sex ratio of 91.3 men per 100 women.
- 13.4 percent of the population is aged 60 years or older. 66 percent are in the age category of 15 thru 59. And 21 percent are younger than 15 years.
- The population density is 577 persons per km².

Figure 1. Population growth 2000-3rd quarter 2007



- There were 923 births registered at the Population Registry Office by the end of the 3rd quarter of 2007.
- 476 of the babies registered were male and 447 were female.
- 12.8 percent were born of a teenage mother. Of which 6.8 percent were born to a married mother.
- Of all the babies born out of wedlock, 20.6 percent were born to a teenage mother.
- The largest group of babies born out of wedlock up until the 3rd quarter 2007 was born to mothers aged 20 thru 24 years.

Figure 2. Babies registered by age of mother, end of 3rd quarter 2002-2007

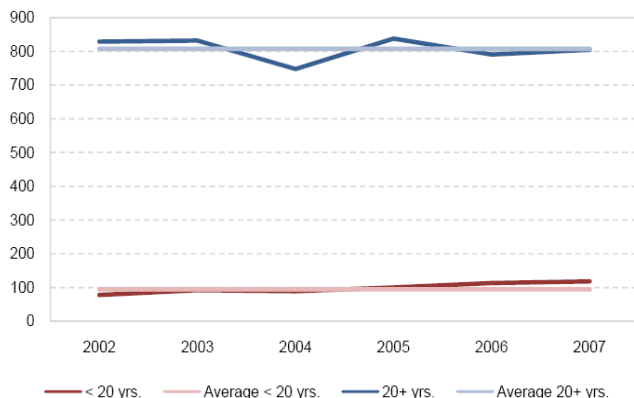


Table 1 Population by age and sex

	End of year			YTD 2007			Index (2000=100)
	2004	2005	2006	Male	Female	Total	
0-4 yrs.	6,538	6,506	6,379	3,255	3,101	6,356	-9.57
5-9 yrs.	7,418	7,459	7,339	3,608	3,573	7,181	-0.13
10-14 yrs.	7,426	7,698	7,736	3,935	3,802	7,738	13.90
15-19 yrs.	6,865	7,135	7,258	3,704	3,615	7,319	17.97
20-24 yrs.	5,529	5,818	5,980	2,949	2,980	5,929	15.65
25-29 yrs.	6,209	6,359	6,349	2,966	3,282	6,248	-2.11
30-34 yrs.	7,915	7,807	7,477	3,425	3,856	7,281	-7.27
35-39 yrs.	8,763	8,872	8,910	4,163	4,694	8,857	-2.94
40-44 yrs.	9,775	9,932	9,765	4,513	5,045	9,559	12.14
45-49 yrs.	8,516	9,018	9,385	4,526	5,030	9,556	36.28
50-54 yrs.	6,881	7,253	7,589	3,610	4,223	7,833	43.28
55-59 yrs.	5,156	5,530	5,860	2,865	3,247	6,111	47.78
60-64 yrs.	3,873	4,097	4,369	2,117	2,456	4,574	30.88
65-69 yrs.	3,184	3,324	3,366	1,564	1,881	3,445	30.40
70-74 yrs.	2,288	2,404	2,576	1,094	1,543	2,637	53.31
75-79 yrs.	1,335	1,480	1,591	726	1,016	1,742	64.60
80-84 yrs.	782	794	843	334	501	835	16.32
85-89 yrs.	421	443	400	166	276	442	16.72
90-94 yrs.	179	175	192	53	144	198	21.68
95+ yrs.	57	74	93	16	73	89	80.25
Total	99,109	102,178	103,459	49,528	54,339	103,929	14.13

Source: Population registry Office Aruba and the Central Bureau of Statistics

Table 2 Live births by age of mother

	2005	2006	YTD 2007	3rd Q			
				2004	2005	2006	2007
< 15 yrs.	1	3	1	3	1	0	0
15-19 yrs.	144	152	117	29	37	39	44
20-24 yrs.	293	309	231	50	85	83	93
25-29 yrs.	342	316	236	76	87	86	81
30-34 yrs.	266	234	204	81	69	75	81
35-39 yrs.	173	165	107	43	68	53	37
40-44 yrs.	39	47	26	11	8	13	7
45-49 yrs.	5	1	1	0	2	0	0
50+ yrs.	0	0	0	0	0	0	0
Total	1263	1227	923	293	357	349	343

Source: Population Registry Office

Table 3 Deaths by age

	2005	2006	YTD 2007	3rd Q			
				2004	2005	2006	2007
< 1 yrs.	6	8	4	1	1	1	1
1-49 yrs.	66	70	44	13	15	17	11
50-59 yrs.	60	43	50	14	14	11	19
60-69 yrs.	82	115	76	23	18	32	25
70-79 yrs.	119	143	85	36	35	38	22
80-89 yrs.	116	114	70	24	25	32	21
90+ yrs.	33	44	46	11	6	12	16
Total	482	537	375	122	114	143	115

Source: Population Registry Office

- By the end of September 2007, a total of 1,471 persons registered at the Population Registry Office.
- 32.2 percent of those immigrants were Dutch born in Aruba.
- 69 percent of the immigrants were in the age group of 20 thru 59 years.
- 1,548 persons left the island during the first three quarters of 2007.
- 50.8 percent of the emigrants were Dutch born in Aruba or the Netherlands Antilles.

Figure 3. Total number of resident marriages as of the end of the 3rd quarter 2002-2007

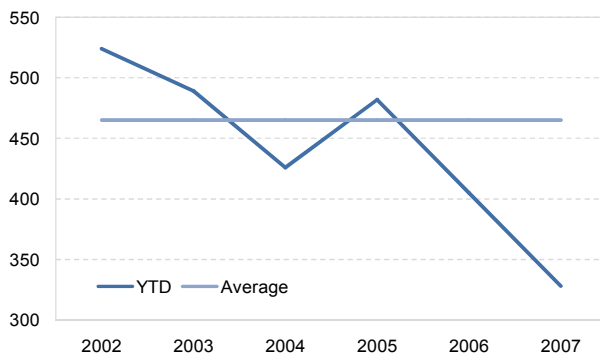


Table 6 Marriages by Aruban status and place of marriage

	2005	2006	YTD 2007	3rd Q			
				2004	2005	2006	2007
Both partners residents, married in Aruba	430	351	237	107	111	94	121
Both partners residents, married elsewhere	42	27	24	8	6	4	9
Both partners non-residents, married in Aruba	520	460	365	157	137	133	144
Male resident, married elsewhere with non-resident Female	95	58	32	17	23	10	2
Male resident, married in Aruba with non-resident Female	7	23	15	2	1	6	9
Female resident, married elsewhere with non-resident Male	64	36	10	5	13	6	1
Female resident, married in Aruba with non-resident Male	3	29	10	1	1	10	7
Unknown	74	22	0	0	21	6	0
Total	1,235	1,006	693	297	313	269	293

Source: Population Registry Office

Table 4 Domiciliation by nationality and place of birth

	2005	2006	YTD 2007	3rd Q			
				2004	2005	2006	2007
Dutch born in Aruba/Neth. Ant.	1,172	847	473	357	386	279	209
Dutch born in the Netherlands	812	623	340	252	277	220	160
Dutch born elsewhere	212	192	108	53	61	60	37
Foreign-born	1,504	600	502	352	420	159	224
Unknown	38	79	48	7	5	31	15
Total	3,738	2,341	1,471	1,021	1,149	749	645

Source: Population Registry Office

Table 5 Departures by nationality and place of birth

	2005	2006	YTD 2007	3rd Q			
				2004	2005	2006	2007
Dutch born in Aruba/Neth. Ant.	671	813	787	421	319	415	486
Dutch born in the Netherlands	424	513	399	191	230	258	216
Dutch born elsewhere	151	159	171	96	64	69	96
Foreign-born	220	237	190	72	38	50	72
Unknown	3	0	1	1	0	0	0
Total	1,469	1,722	1,548	781	651	792	870

Source: Population Registry Office

Table 7 Divorces by Aruban status and place of divorce

	2005	2006	YTD 2007	3rd Q			
				2004	2005	2006	2007
Both partners residents, divorced in Aruba	342	455	257	66	81	115	64
Both partners residents, divorced elsewhere	5	1	0	0	1	0	0
Both partners non-residents, divorced in Aruba	1	2	0	0	0	0	0
Male resident, divorced elsewhere with non-resident Female	17	11	3	4	4	1	0
Male resident, divorced in Aruba with non-resident Female	30	22	18	13	5	5	3
Female resident, divorced elsewhere with non-resident Male	12	6	2	2	3	0	1
Female resident, divorced in Aruba with non-resident Male	38	33	22	7	8	9	6
Unknown	0	1	0	0	0	0	0
Total	445	531	302	92	102	130	74

Source: Population Registry Office