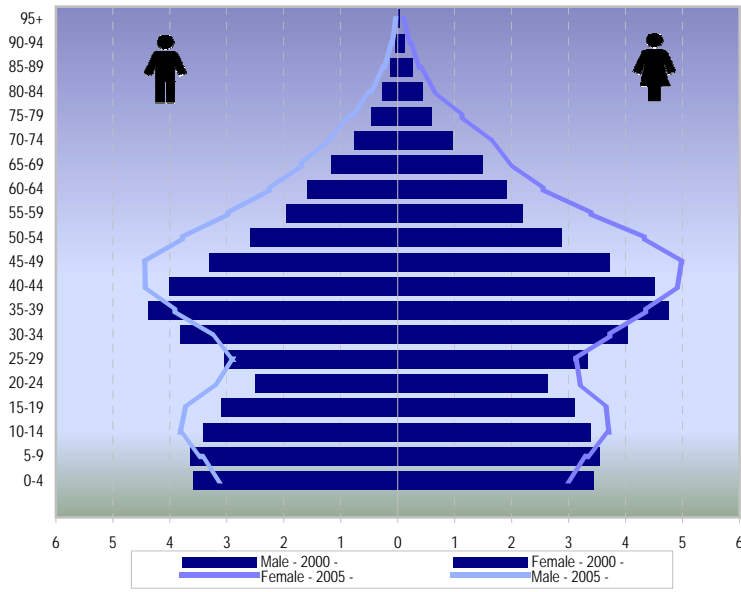
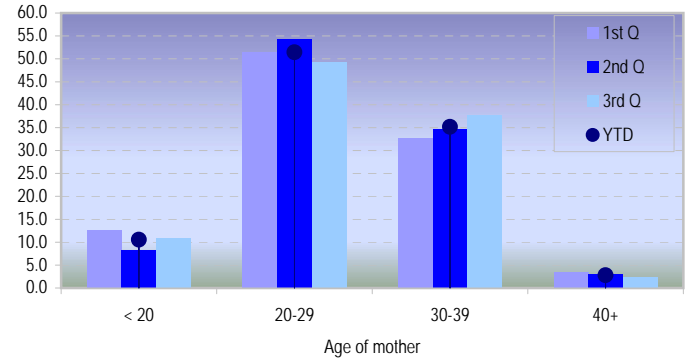


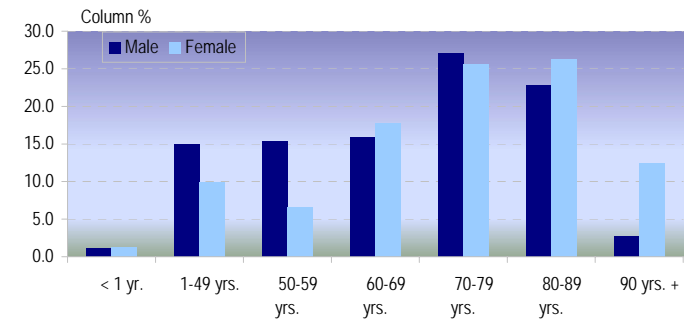
Population of Aruba 2000 - 2005



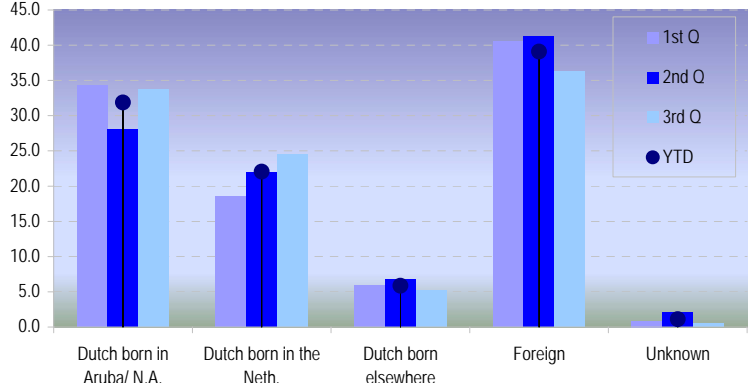
Column % Mother's age distribution at birth, 2005



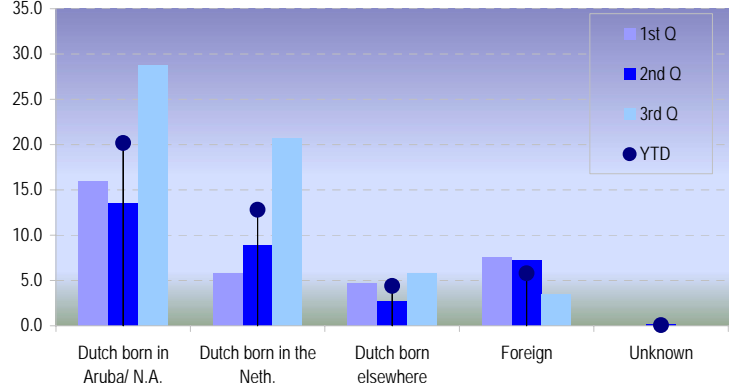
Relative number of deaths by age and sex, 2005



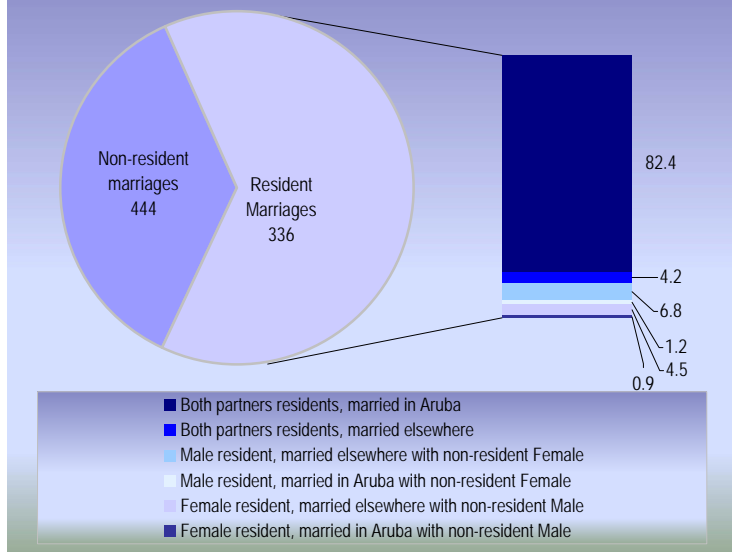
Relative number of persons coming to Aruba, 2005



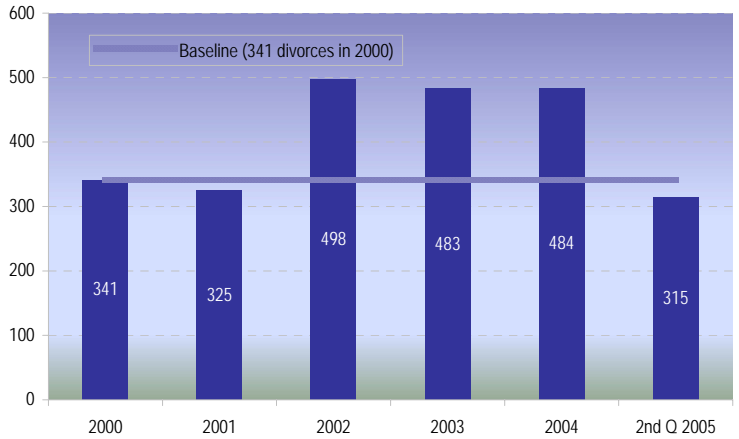
Relative number of persons leaving Aruba, 2005



Marriages 2005



Divorces 2000 - 3rd Q 2005



	3 rd quarter 2005			3 rd quarter 2004			3 rd quarter 2003			YTD 2005 1/1 - 30/9			INDEX					
	Male	Female	Total	Male	Female	Total	Male	Female	Total	Male	Female	Total	2000 (=100)	2001	2002	2003	2004	
TOTAL POPULATION	48,323	52,927	101,250	46,884	51,232	98,116	45,168	49,343	94,511	48,323	52,927	101,250	91,064	17.55	15.58	18.32	21.17	
AGE-GROUPS																		
0-4 yrs.	3,307	3,157	6,464	3,314	3,162	6,477	2,849	2,797	5,646	3,118	2,983	6,101	7,028	-22.52	-29.62	-22.11	-18.08	
5-9 yrs.	3,786	3,661	7,447	3,766	3,623	7,389	3,746	3,582	7,328	3,774	3,644	7,418	7,190	7.73	7.02	7.14	7.79	
10-14 yrs.	3,860	3,769	7,629	3,727	3,666	7,394	3,643	3,605	7,248	3,879	3,779	7,658	6,793	14.62	20.43	25.07	22.27	
15-19 yrs.	3,530	3,510	7,040	3,348	3,377	6,725	3,215	3,225	6,440	3,557	3,529	7,086	6,204	18.98	12.55	16.54	25.31	
20-24 yrs.	2,843	2,869	5,712	2,717	2,702	5,419	2,613	2,618	5,231	2,859	2,885	5,744	5,127	12.41	-3.54	11.40	18.86	
25-29 yrs.	2,917	3,408	6,325	2,843	3,299	6,142	2,805	3,165	5,970	2,896	3,370	6,266	6,383	-31.08	-29.68	-21.12	-6.93	
30-34 yrs.	3,699	4,130	7,829	3,759	4,151	7,910	3,769	4,156	7,925	3,648	4,081	7,729	7,852	-17.20	8.54	3.62	2.02	
35-39 yrs.	4,186	4,646	8,832	4,160	4,605	8,765	4,161	4,650	8,811	4,173	4,627	8,801	9,125	-14.28	-14.67	-12.03	-10.11	
40-44 yrs.	4,688	5,193	9,881	4,589	5,081	9,670	4,445	4,883	9,328	4,687	5,182	9,869	8,524	41.82	35.57	32.88	34.24	
45-49 yrs.	4,147	4,746	8,893	3,902	4,499	8,401	3,709	4,278	7,988	4,195	4,790	8,985	7,012	44.74	45.53	48.64	48.60	
50-54 yrs.	3,337	3,821	7,159	3,200	3,576	6,775	3,034	3,333	6,367	3,363	3,870	7,234	5,467	48.56	54.17	55.68	57.52	
55-59 yrs.	2,550	2,876	5,426	2,378	2,711	5,089	2,243	2,585	4,829	2,589	2,917	5,506	4,135	55.18	57.34	56.18	55.14	
60-64 yrs.	1,879	2,158	4,036	1,776	2,049	3,825	1,705	1,965	3,670	1,908	2,188	4,096	3,494	12.56	18.77	19.50	25.72	
65-69 yrs.	1,454	1,831	3,286	1,382	1,766	3,147	1,308	1,712	3,020	1,476	1,849	3,325	2,642	65.95	50.00	48.73	46.66	
70-74 yrs.	1,010	1,362	2,372	967	1,284	2,251	929	1,207	2,136	1,026	1,387	2,413	1,720	84.60	94.78	75.09	71.34	
75-79 yrs.	599	844	1,443	543	762	1,305	497	678	1,175	622	872	1,494	1,058	54.50	16.77	44.41	58.09	
80-84 yrs.	325	462	788	321	453	775	310	432	742	335	472	807	718	-70.12	-8.16	15.77	21.28	
85-89 yrs.	143	299	443	130	287	417	123	297	420	152	310	463	379	38.34	44.99	28.44	26.26	
90-94 yrs.	49	129	178	50	135	185	54	129	183	51	132	183	163	114.16	42.75	38.52	23.51	
95+ yrs.	12	56	68	11	46	57	10	46	55	13	61	74	49	105.32	50.70	35.33	34.20	
LIVE BIRTHS	146	132	278	135	132	267	149	156	305	482	410	892						
<i>Legitimate</i>	79	68	147	66	69	135	80	89	169	241	209	450	Total Fertility Rate and Age-Specific Fertility Rate					
10-14 yrs.	0	0	0	0	0	0	0	0	0	5	9	14	2000	2001	2002	2003	2004	
15-19 yrs.	1	2	3	3	1	4	4	2	6	32	37	69	TFR	1.9	1.8	1.8	1.8	1.7
20-24 yrs.	14	14	28	9	12	21	12	14	26	72	66	138	10-14:	0.6	0.6	0.0	0.8	2.2
25-29 yrs.	21	29	50	25	18	43	24	24	48	76	55	131	15-19:	52.0	41.5	36.8	35.8	36.8
30-34 yrs.	30	16	46	17	21	38	20	37	57	51	36	87	20-24:	99.2	100.7	109.2	101.2	90.9
35-39 yrs.	13	6	19	12	17	29	13	11	24	5	4	9	25-29:	110.5	104.5	93.7	96.3	96.0
40-44 yrs.	0	1	1	0	0	0	7	1	8	0	2	2	30-34:	70.8	70.4	72.6	79.1	67.7
45-49 yrs.	0	0	0	0	0	0	0	0	0	0	0	0	35-39:	37.3	40.7	41.3	36.1	35.3
<i>Illegitimate</i>	67	64	131	66	63	129	66	66	132	240	200	440	40-44:	8.0	8.2	6.0	7.1	6.2
10-14 yrs.	0	0	0	0	1	1	0	0	0	0	1	1	45-49:	0.3	0.3	0.7	0.2	0.4
15-19 yrs.	5	14	19	10	13	23	11	14	25	38	40	78						
20-24 yrs.	22	19	41	22	18	40	20	12	32	80	56	136						
25-29 yrs.	20	13	33	17	13	30	14	17	31	66	50	116						
30-34 yrs.	11	8	19	6	11	17	13	14	27	29	26	55						
35-39 yrs.	8	4	12	8	6	14	5	7	12	22	18	40						
40-44 yrs.	1	5	6	3	1	4	3	2	5	5	8	13						
45-49 yrs.	0	1	1	0	0	0	0	0	0	0	1	1						
<i>Unknown</i>	0	0	0	3	0	3	3	1	4	7	1	2						
DEATHS	65	47	112	72	51	123	71	52	123	152	188	340	Age-Specific Death Rate					
< 1 yr.	1	1	2	1	0	1	1	1	2	2	2	4	2000	2001	2002	2003	2004	
1-49 yrs.	9	6	15	16	5	21	11	5	16	15	28	43	5.8	4.7	5.2	5.2	5.1	
50-59 yrs.	8	4	12	12	4	16	10	5	15	10	29	39	2.9	3.1	2.4	2.4	2.5	
60-69 yrs.	11	7	18	11	13	24	21	12	33	27	30	57	1.2	0.8	1.0	0.9	1.0	
70-79 yrs.	17	11	28	17	8	25	13	8	21	39	51	90	6.0	5.1	4.9	5.7	4.7	
80-89 yrs.	16	13	29	11	18	29	10	13	23	40	43	83	15.8	13.5	15.0	15.4	14.7	
90 yrs. +	3	5	8	4	3	7	5	8	13	19	5	24	45.3	29.4	34.0	30.9	32.6	
													112.1	96.9	91.0	95.2	84.0	
													193.3	190.5	241.9	193.7	208.2	
DOMICILIATION	453	514	967	440	478	918	364	385	749	819	849	1668	Number of persons arriving from Holland					
Dutch born in Aruba/ N.	142	130	272	126	124	250	97	88	185	270	243	513	2000	2001	2002	2003	2004	
Dutch born in the Neth.	127	86	213	90	58	148	73	48	121	204	140	344	46.3	48.2	53.9	55.9	55.4	
Dutch born elsewhere	27	36	63	30	36	66	16	18	34	55	49	104	37.4	39.2	36.4	36.5	36.7	
Foreign	148	251	399	190	255	445	177	229	406	277	404	681	5.3	4.7	8.4	6.3	6.5	
Unknown	9	11	20	4	5	9	1	2	3	13	13	26	1.0	1.7	0.5	0.7	0.7	
													10.0	6.2	0.9	0.5	0.6	
DEPARTURES	172	147	319	200	168	368	185	204	389	296	262	558	Number of persons leaving for Holland					
Dutch born in Aruba/ N.	70	63	133	86	64	150	111	97	208	131	114	245	2000	2001	2002	2003	2004	
Dutch born in the Neth.	52	35	87	65	43	108	31	39	70	79	49	128	64.3	63.8	65.3	60.3	53.0	
Dutch born elsewhere	12	14	26	18	25	43	21	34	55	25	34	59	23.9	20.8	20.0	25.3	32.3	
Foreign	37	34	71	31	36	67	22	34	56	60	64	124	10.6	14.6	13.5	13.1	13.2	
Unknown	1	1	2	0	0	0	0	0	0	1	1	2	1.2	0.8	1.3	1.3	1.4	
													0.0	0.0	0.0	0.0	0.2	
MARRIAGES							Q2 2005	Q2 2004	Q2 2003	YTD 2005 1/1-30/6			Relative distribution					
Both partners residents, married in Aruba							90	104	78	164			2000	2001	2002	2003	2004	
Both partners residents, married elsewhere							0	4	10	7			61.1	48.7	33.6	33.4	36.4	
Both partners non-residents, married in Aruba							187	144	99	286			5.9	3.4	5.0	3.5	2.2	
Male resident, married elsewhere with non-resident Female							4	30	34	10			7.2	7.5	17.0	34.7	48.8	
Male resident, married in Aruba with non-resident Female							3	9	15	4			1.6	14.8	23.4	13.6	6.9	
Female resident, married elsewhere with non-resident Male							1	14	17	4			17.0	13.7	6.7	5.5	1.7	
Female resident, married in Aruba with non-res																		