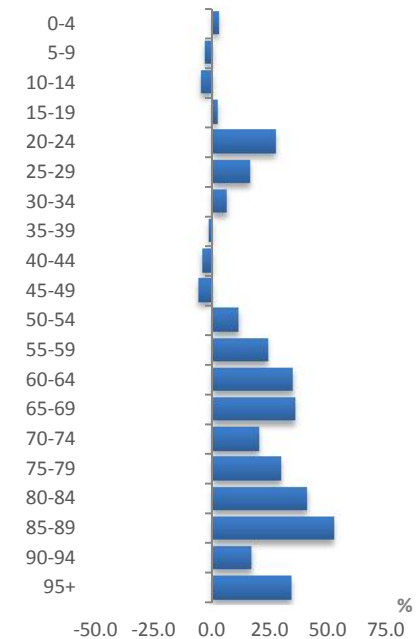


Table 1. Total population by age and sex

	End of year			1 st Qtr 2017			Index (2010=100)
	2014	2015	2016	Male	Female	Total	
0-4 yrs.	6,674	6,729	6,592	3,359	3,149	6,508	-0.1
5-9 yrs.	6,965	6,857	6,737	3,436	3,299	6,735	-4.4
10-14 yrs.	7,192	7,145	7,121	3,635	3,501	7,136	-4.9
15-19 yrs.	7,505	7,446	7,328	3,694	3,649	7,343	0.5
20-24 yrs.	6,389	6,612	6,616	3,416	3,226	6,642	25.7
25-29 yrs.	6,038	6,295	6,432	3,267	3,210	6,477	18.2
30-34 yrs.	6,606	6,763	6,791	3,171	3,587	6,758	5.5
35-39 yrs.	7,178	7,332	7,330	3,349	3,961	7,310	-2.2
40-44 yrs.	8,199	7,967	7,608	3,488	4,062	7,551	-8.7
45-49 yrs.	8,634	8,676	8,768	3,998	4,734	8,732	-5.6
50-54 yrs.	9,401	9,382	9,178	4,220	4,896	9,116	8.4
55-59 yrs.	8,155	8,455	8,719	4,064	4,692	8,757	27.0
60-64 yrs.	6,509	6,835	7,081	3,233	3,910	7,142	39.2
65-69 yrs.	4,725	4,999	5,229	2,404	2,914	5,317	42.2
70-74 yrs.	3,291	3,466	3,653	1,592	2,106	3,698	26.1
75-79 yrs.	2,427	2,543	2,584	1,105	1,500	2,605	32.0
80-84 yrs.	1,481	1,524	1,602	581	1,024	1,605	46.6
85-89 yrs.	674	739	782	296	505	801	60.9
90-94 yrs.	242	246	255	71	185	256	18.2
95+ yrs.	88	96	91	23	64	87	18.7
Total	108,374	110,108	110,496	52,403	58,173	110,576	9.0

Source: 2010 Census and the Population Registry Office

Graph 1. Population change 2010-2017



Keeping an accurate and reliable population registry is one of the responsibilities of the Population and Civil Registry Office (DBSB). The population registry is supposed to consist of those who have actual residency in Aruba. Any improperly recorded data or any wrongly registered person has financial implications for Aruba in general and in particular for its social funds. It is therefore important that the population registry is kept accurate and reliable.

A collaboration between the DBSB, the AZV and IASA, resulted in a list of 11,929 persons whose actual residency needed verification. Starting late 2016, the DBSB launched the project "Opschonen van het bevolkingsregister van de DBSB", with the main objective to update the population registry. Ultimately, those whose residency in Aruba could not be verified, will be de-registered from the Population Registry.

Table 2. Total estimated (CBS) and registered (DBSB) population by age and sex, 1st Qtr 2017

	CBS estimates			Population and Civil Registry Office (DBSB)			Discrepancy CBS-DBSB
	Male	Female	Total	Male	Female	Total	
0-4 yrs.	3,359	3,149	6,508	3,253	3,006	6,259	-249
5-9 yrs.	3,436	3,299	6,735	3,430	3,333	6,763	28
10-14 yrs.	3,635	3,501	7,136	3,677	3,532	7,209	73
15-19 yrs.	3,694	3,649	7,343	3,751	3,718	7,469	126
20-24 yrs.	3,416	3,226	6,642	3,476	3,344	6,820	178
25-29 yrs.	3,267	3,210	6,477	3,613	3,528	7,141	664
30-34 yrs.	3,171	3,587	6,758	3,580	3,947	7,527	769
35-39 yrs.	3,349	3,961	7,310	3,805	4,191	7,996	686
40-44 yrs.	3,488	4,062	7,551	4,065	4,517	8,582	1,031
45-49 yrs.	3,998	4,734	8,732	4,726	5,174	9,900	1,168
50-54 yrs.	4,220	4,896	9,116	5,029	5,426	10,455	1,339
55-59 yrs.	4,064	4,692	8,757	4,745	5,161	9,906	1,149
60-64 yrs.	3,233	3,910	7,142	3,658	4,138	7,796	654
65-69 yrs.	2,404	2,914	5,317	2,739	3,143	5,882	565
70-74 yrs.	1,592	2,106	3,698	1,760	2,174	3,934	236
75-79 yrs.	1,105	1,500	2,605	1,224	1,540	2,764	159
80-84 yrs.	581	1,024	1,605	622	1,074	1,696	91
85-89 yrs.	296	505	801	289	508	797	-4
90-94 yrs.	71	185	256	83	188	271	15
95+ yrs.	23	64	87	38	91	129	42
Total	52,403	58,173	110,576	57,563	61,733	119,296	8,720

Source: 2010 Population and Housing Count (CBS) and the Population and Civil Registry Office (DBSB)

Including ex officio de-registrations

Other than reduce the current discrepancy of 8,720 persons between the estimated population by the CBS and the registered population at the DBSB (see Table 2), the data cleaning at the DBSB will have no implications on the population estimates made by the CBS.

Table 3. Live births by age of mother

	End of year			1 st Q					
	2014	2015	2016	2014	2015	2016	2017		
							Male	Female	Total
< 15 yrs.	2	1	1	-	-	-	-	-	-
15-19 yrs.	131	98	89	1	19	20	12	7	19
20-24 yrs.	343	306	262	34	78	81	31	29	60
25-29 yrs.	334	341	315	76	102	78	35	21	56
30-34 yrs.	350	283	251	89	68	70	34	20	54
35-39 yrs.	166	164	163	79	37	53	14	13	27
40-44 yrs.	48	50	38	36	10	10	-	2	2
45-49 yrs.	2	1	2	16	1	1	-	1	1
50+ yrs.	-	-	-	-	-	-	-	-	-
Not report	-	-	-	-	-	-	-	-	-
Total	1,376	1,244	1,121	331	315	313	126	93	219

Source: Population Registry Office

Excluding revision

Table 4. Deaths by age and sex

	End of year			1 st Q					
	2014	2015	2016	2014	2015	2016	2017		
							Male	Female	Total
< 1 yrs.	5	6	5	1	1	2	2	-	2
1-49 yrs.	43	47	65	10	10	20	4	1	5
50-59 yrs.	71	84	85	17	19	19	12	8	20
60-69 yrs.	125	126	123	32	30	29	19	14	33
70-79 yrs.	176	154	205	42	27	54	21	20	41
80-89 yrs.	160	191	228	45	57	64	29	29	58
90+ yrs.	63	71	70	15	19	10	5	10	15
Total	643	679	781	162	163	198	92	82	174

Source: Population Registry Office

Table 5. Domiciliation by nationality and place of birth

	End of year			1 st Q					
	2014	2015	2016	2014	2015	2016	2017		
							Male	Female	Total
Dutch born in Aruba/Dutch Antilles	713	766	736	203	176	178	81	72	153
Dutch born in the Netherlands	543	691	583	98	115	137	81	70	151
Dutch born elsewhere	223	258	213	56	61	51	25	29	54
Other Foreign-born	1,169	1,752	963	306	299	392	96	121	217
Unknown	35	37	49	9	8	16	7	3	10
Total	2,683	3,504	2,544	672	659	774	290	295	585

Source: Population Registry Office

Table 6. Departures by nationality and place of birth

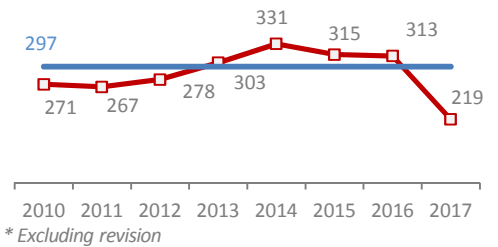
	End of year			1 st Q					
	2014	2015	2016	2014	2015	2016	2017		
							Male	Female	Total
Dutch born in Aruba/Dutch Antilles	1,160	1,077	1,141	168	171	131	93	84	177
Dutch born in the Netherlands	451	511	519	55	94	79	51	48	99
Dutch born elsewhere	289	283	319	60	60	63	26	50	76
Other Foreign-born	447	462	517	137	106	113	97	101	198
Unknown	-	1	-	0	0	0	-	-	-
Total	2,347	2,334	2,496	420	431	386	267	283	550

Source: Population Registry Office

Including ex officio de-registrations

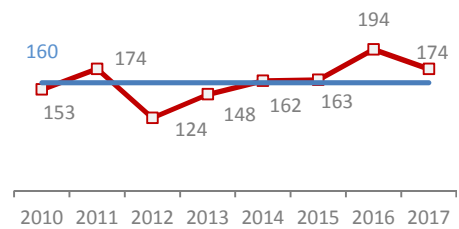
1st Quarter 2017

Graph 2. Births and 2010-2016 avg, first quarters¹

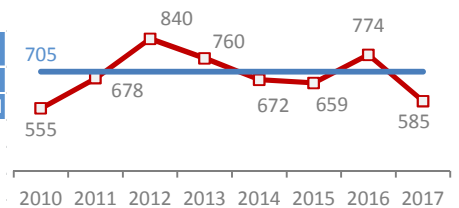


* Excluding revision

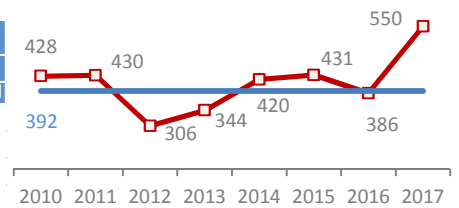
Graph 3. Deaths and 2010-2016 avg, first quarters¹



Graph 4. Domiciliation and 2010-2016 avg, first quarters¹



Graph 5. Departures and 2010-2016 avg, first quarters¹



¹ - Event (red line with square markers), Average events 2010-2016 (blue horizontal line)



This Quarterly Demographic Bulletin is provided by the Central Bureau of Statistics Aruba and represents a snapshot of the information provided by the source(s) as indicated. While we endeavor to keep the information up to date and correct, we make no representation or warranties of any kind, expressed or implied, about the completeness, accuracy, reliability, suitability or availability with respect to the information or related graphics contained in this bulletin for any purpose. The information contained in this publication should still be considered as provisional and is released for general information purposes only.