



### Highlights June 2008 in Review

#### Prices:

- Inflation in June 2008 up by 1.5 percent
- Year over year inflation at 8.4 percent
- Inflation during the first half of 2008 up by 4.6 percent
- Price of gasoline up by Afl. 0.16 in June 2008

#### Utilities:

- Water consumption down by 6.1 percent
- Electricity distribution up by 0.8 percent

#### Tourism:

- Cruise ship passengers down by 33.9 percent
- Room nights rented down by 12.2 percent
- Occupancy rate in June 2008 at 69.6 percent
- Average daily rate reached the amount of Afl. 250.26
- Revenue per available room at Afl. 94.73

### Monthly Economic Indicators

June 2008	% Change	
	Last Month	Last Year
<b>Consumer prices</b>		
Total index	1.5	8.4
<b>Utilities</b>		
Water consumption	-8.5	-6.1
Electricity distribution	-0.9	0.8
<b>Foreign Trade</b>		
Import	n.a.	n.a.
Export	n.a.	n.a.
<b>Government</b>		
Total tax revenue	n.a.	n.a.
<b>Tourism</b>		
Cruise passengers	-88.1	-33.9
Room nights rented	-9.2	-12.2
Occupancy rate	-4.5	-1.7
Avg daily rate	-1.1	-8.2
Revpar	-2.1	-20.5

Source: Central Bureau of Statistics Aruba

## Inflation in June up by 1.5 percent

During the month of June 2008, average prices in Aruba increased by 1.5 percent compared to the previous month. With the exception of Clothing & footwear (-1.1%) and Health (-0.1), price increases were recorded for all product sectors, particularly, Housing (3.3%), Transport & communication (2.7%), Household operation (0.7%), Goods & services n.e.c. (0.7%), Leisure & recreation (0.7%), Food (0.6%) and Beverage & tobacco (0.2%). On a year to date basis, average prices in June 2008 dropped with 1.8 percentage points compared to the same period of 2007.

On a yearly basis, consumer prices went up by 8.4 percent in June 2008. Major price increases were recorded in the following product sectors:

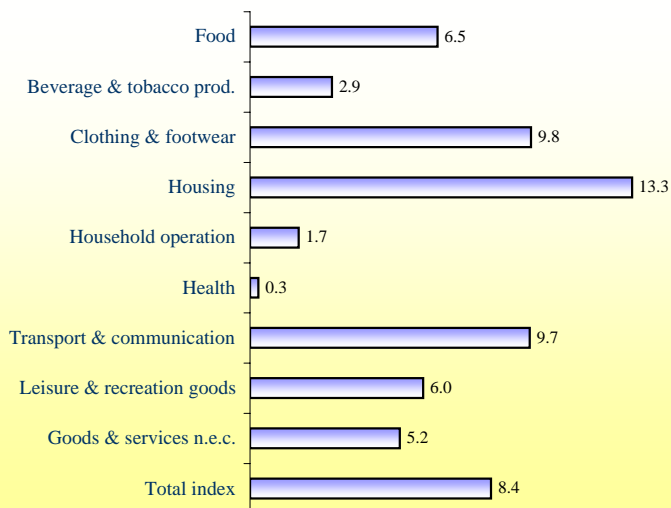
- Housing:** Prices in the Housing sector rose by 13.3 percent compared to June 2007, mainly as a result of price increases of "Water supply" (+27.6%), "Domestic fuel and power" (+22.4%), "Property maintenance goods" (+5.6%) and "Property rent" (+3.5%).
- Clothing & footwear:** In June 2008, prices in this sector increased by 9.8 percent compared to June 2007. Higher prices were recorded for "Clothing & accessories" (10.5%) and "Footwear" (6.0%).
- Transport & communication:** Main price increases in this sector were recorded for "Own transport" (18.5%), "Vehicle supplies" (11.6%) and "Public transport costs" (1.4%). "Communication services", on the other hand, dropped by 0.3 percent compared to June 2007.

### Consumer Prices

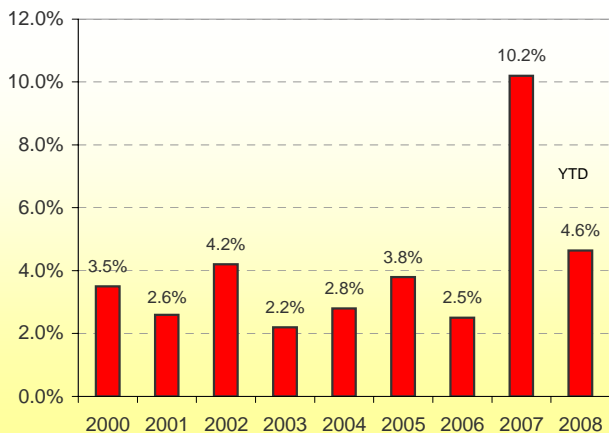
June 2008	% Change since		
	last month	last year	YTD % change
Food	0.6	6.5	4.5
Beverage & tobacco prod.	0.2	2.9	1.8
Clothing & footwear	-1.1	9.8	1.9
Housing	3.3	13.3	6.0
Household operation	0.7	1.7	2.3
Health	-0.1	0.3	0.3
Transport & communication	2.7	9.7	7.9
Leisure & recreation goods	0.7	6.0	3.2
Goods & services n.e.c.	0.7	5.2	2.9
<b>Total index</b>	<b>1.5</b>	<b>8.4</b>	<b>4.6</b>

Source: Central Bureau of Statistics Aruba

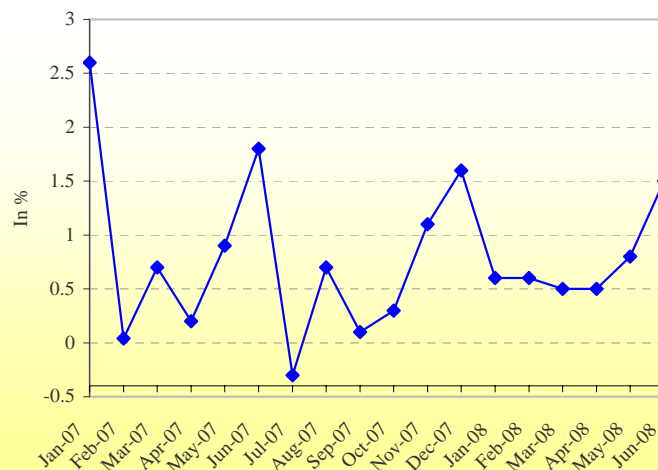
### Yearly % Price Change



### CPI - End of Year



### Monthly % Change of C.P.I.



## Prices of water, electricity and gasoline

Increases in international oil prices resulted in higher utilities and fuel prices. Fuel surcharge during the month of June 2008 increased by 8.7 percent compared to the previous month. Price of water rose by 8.6 percent compared to May 2008. In June 2008, gasoline prices increased by 6.8 percent compared to the previous month, reaching the amount of Afl. 2.57 per liter. In addition, price of diesel increased by 8.8 percent compared to June 2008, reaching the amount of Afl. 2.51.

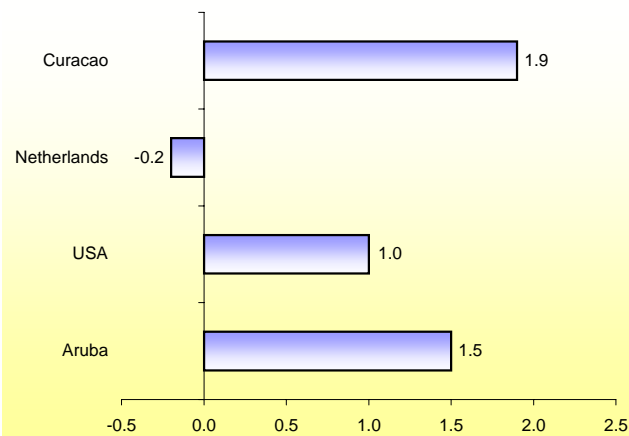
### Prices of utilities during July 2008

	Price change	Impact on CPI
Water <sup>1</sup>	6.0%	0.21
Electricity <sup>2</sup>	6.6%	0.34
Gasoline (premium)	3.7%	0.14
<b>Total impact</b>		<b>0.69</b>

Source: Central Bureau of Statistics Aruba

Disregarding any other important fluctuations in prices over the month of July 2008, price movements of water, electricity and gasoline during the month of July will affect the consumer price index of July 2008 by 0.69.

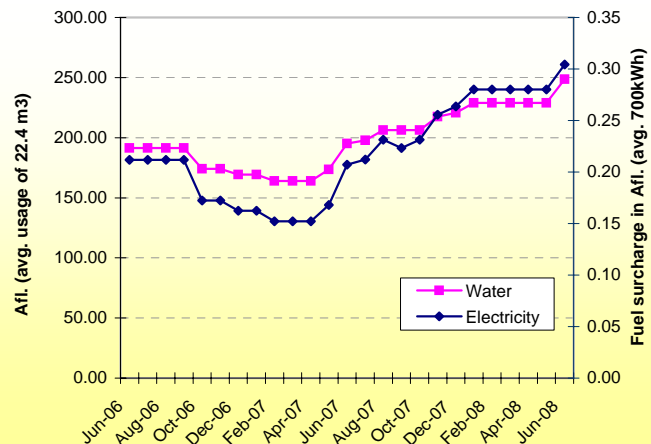
### CPI monthly percentage change in June 2008



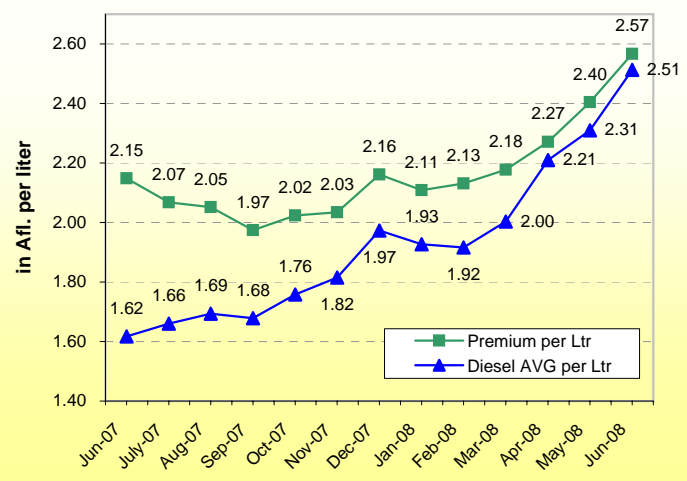
CPI USA: seasonally unadjusted

1) Based on an average water usage of 22.4 m3 per month.  
2) Based on an average electricity consumption of 700 kWh per month.

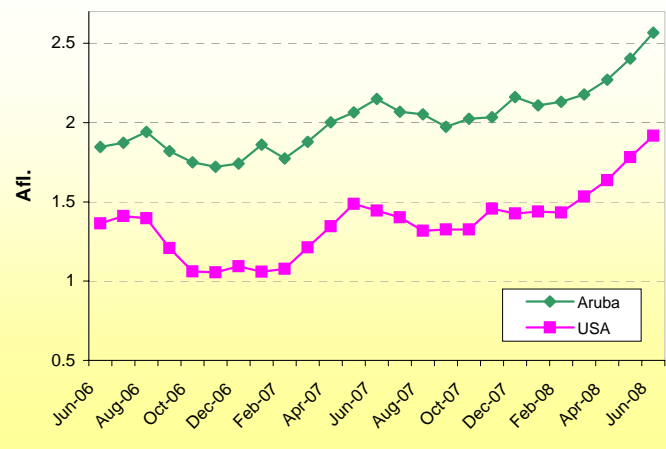
### Utility prices in Aruba



### Gasoline and Diesel Prices in Afl.



### Avg. Gasoline Prices in Afl.



## Water distribution down by 0.2 percent

Average water distribution (houses, companies, hotels, government) dropped by 0.2 percent in June 2008. Household and public sector users registered the largest usage drop of 6.1 and 35.7 percent respectively. On the other hand, water distribution to companies and hotels rose by 6.6 and 16.2 percent respectively when compared to June 2007. During the first half of 2008, total water distribution rose by 3.4 percent compared to the same period one year earlier.

## Electricity distribution up by 0.8 percent

In June 2008, electricity (in MWh) supplied to Elmar for distribution increased by 0.8 percent compared to June 2007. During the first half of 2008, average electricity distribution dropped by 0.6 percent compared to the similar period of 2007.

### Monthly electricity distribution to Elmar (average)

June 2008

		% Change since		
		last month	last year	YTD % change
Electricity (in MWh)	68,178	-0.9	0.8	-0.6

Source: WEB Aruba N.V., Central Bureau of Statistics Aruba

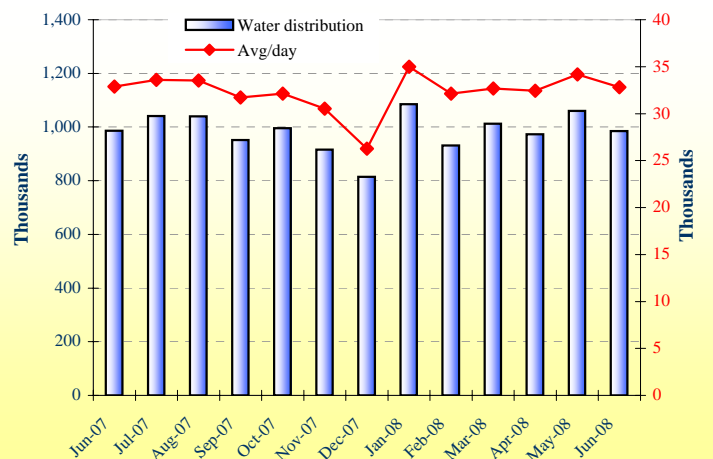
### Water distribution (in m<sup>3</sup>)\*

June 2008		% Change since		
		last month	last year	YTD % change
Houses	584,631	-8.5	-6.1	-1.3
Companies	123,474	-8.4	6.6	10.9
Hotels	262,061	-3.6	16.2	14.7
Government	14,247	1.6	-35.7	-32.6
<b>Total</b>	<b>984,413</b>	<b>-7.1</b>	<b>-0.2</b>	<b>3.4</b>

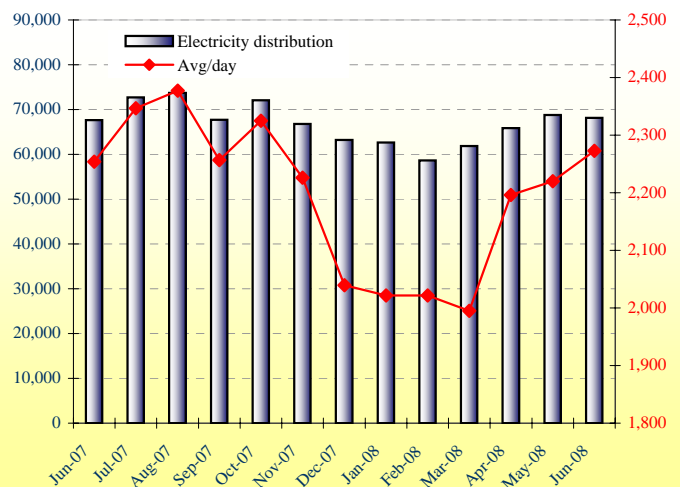
Source: WEB Aruba N.V., Central Bureau of Statistics Aruba

\* Calculation of drink water distribution in Aruba (in m3) is based on an average water distribution per month, excluding the distribution to Valero and vessels.

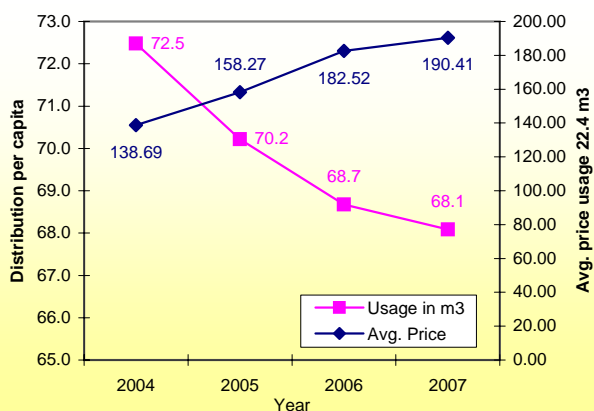
### Water distribution per month (in m3)



### Electricity distribution (in MWh)



### Water distribution (households)





## A fall-off in cruise visitor arrivals during the month of June 2008

In June 2008, cruise passenger arrivals dropped by a remarkable 33.9 percent compared to June 2007. The number of cruise vessels entering the port dropped from 10 ships in June 2007, to 2 ships in June 2008. During the first half of 2008, the number of cruise passengers increased by 4.3 percent, compared to the similar period of 2007.

### Hotel statistics for the month of June

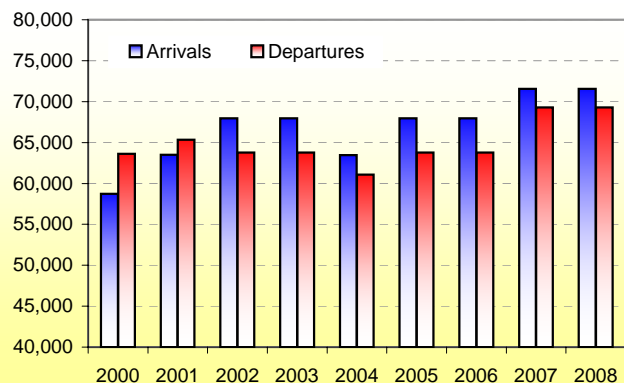
A drop in the room nights rented and lower occupancy were the main contributors to the lower performance in hotels in June 2008. The room nights rented declined by 12.2 percent compared to June 2007. Occupancy rate in hotels was at 69.6 percent, down from 70.8 percent recorded in June 2007. Compared to June 2007, the average daily rate dropped by 8.2 percent, reaching Afl. 250.26 in June 2008. In addition, the revenue per available room and room revenue dropped by 20.5 and 29.1 percent respectively, compared to June 2007.

#### Passenger traffic and landings

June 2008	% Change since			YTD
	last month	last year	% change	
<b>Passenger traffic</b>				
Arrivals	71,553	-3.6	5.3	18.4
Departure	69,303	-4.7	8.7	17.4
In transit	4,879	24.1	50.0	42.8
<b>Landings</b>				
Commercial	1,018	-2.9	6.0	17.2
Non-commercial	336	9.4	102.4	28.0

Source: Department of Immigration

#### Airport Traffic during the months of June

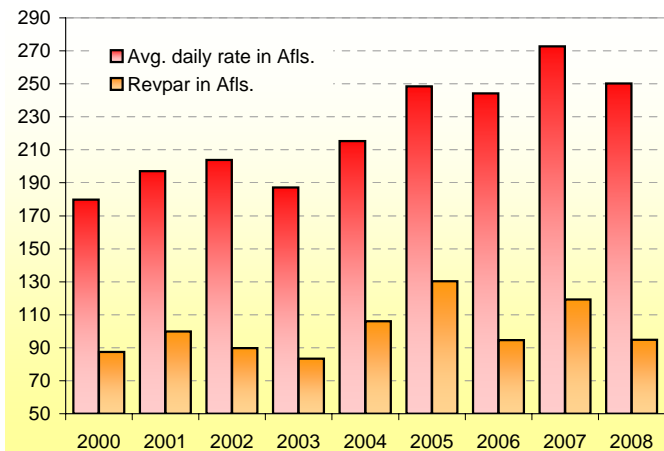


#### Tourism

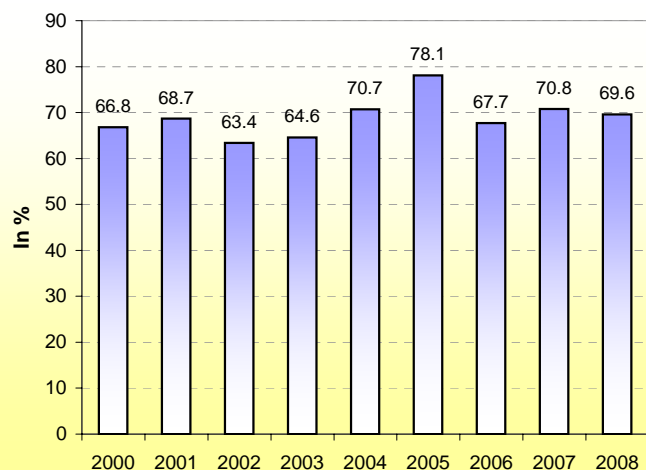
June 2008		% Change since		
		last month	last year	YTD % change
<b>Cruise tourism</b>				
Cruise passengers	7,084	-88.1	-33.9	4.3
Cruise calls	2	-93.5	-80.0	7.7
Crew members	n.a.	n.a.	n.a.	n.a.
Total number of visitors	n.a.	n.a.	n.a.	n.a.
<b>Hotel statistics</b>				
Room nights rented	124,936	-9.2	-12.2	-2.4
Occupancy in %	69.6	-4.5	-1.7	3.5
Avg. daily rate in Afl.	250.26	-1.1	-8.2	2.7
Revpar in Afl.	94.73	-2.1	-20.5	-1.8
Room revenue in Afl. (x1,000)	16,784	-8.1	-29.1	-7.3

Source: Cruise Tourism Authority, Central Bureau of Statistics Aruba

#### Avg. Daily Rate & Revpar during the months of June



#### Occupancy rate during the months of June



# UPCOMING CBS PUBLICATIONS AND EVENTS

## Release Calendar Publications Central Bureau of Statistics August and September 2008

### August 2008

Consumer Price Index July 2008  
Hotel Report July 2008  
Government Sector of Aruba 1997 - 2008  
Foreign Trade Statistics 2nd Qtr. 2008  
July 2008 in Review

### Release date

05 August 2008  
15 August 2008  
22 August 2008  
29 August 2008  
29 August 2008

### September 2008

Consumer Price Index August 2008  
Hotel Report August 2008  
Economic Profile 2nd Qtr. 2008  
August 2008 in Review

05 September 2008  
15 September 2008  
19 September 2008  
30 September 2008

## Upcoming Events in August and September 2008 Central Bureau of Statistics Aruba

### Fieldwork

#### August 2008

Fieldwork Tourist Expenditure Survey August 2008

16 August - 23 August

#### September 2008

Fieldwork Tourist Expenditure Survey September 2008

20 September - 27 September

# RELEASED PUBLICATIONS IN 2008

## Publications Central Bureau of Statistics Aruba

<b>Monthly Publications</b>	<b>Date issued</b>	<b>Prices in Afl.</b>
Consumer Price Index December 2007	16 January 2008	2.50
Hotel Report November 2007	16 January 2008	Free
Hotel Report December 2007	16 January 2008	Free
November 2007 in Review	22 January 2008	Free
December 2007 in Review	08 February 2008	Free
Consumer Price Index January 2008	14 February 2008	2.50
Hotel Report January 2008	26 February 2008	Free
January 2008 in Review	17 March 2008	Free
Hotel Report February 2008	17 March 2008	Free
Consumer Price Index February 2008	31 March 2008	2.50
Hotel Report March 2008	15 April 2008	Free
February 2008 in Review	21 April 2008	Free
Consumer Price Index March 2008	02 May 2008	2.50
March 2008 in Review	23 May 2008	Free
Hotel Report April 2008	03 June 2008	Free
Consumer Price Index April 2008	03 June 2008	2.50
Consumer Price Index May 2008	06 June 2008	2.50
Hotel Report May 2008	13 June 2008	Free
April 2008 in Review	20 June 2008	Free
Consumer Price Index June 2008	04 July 2008	2.50
Hotel Report June 2008	15 July 2008	Free
May 2008 in Review	18 July 2008	Free
<b>Quarterly Publications</b>		
Economic Profile 3rd Qtr. of 2007	07 February 2008	15.00
Tourist Profile 3rd Qtr. 2007	18 February 2008	10.00
Demographic Bulletin 4th Qtr. 2007	11 March 2008	Free
Foreign Trade Statistics 4th Qtr. 2007	13 March 2008	15.00
Economic Profile 4th Qtr. of 2007	11 April 2008	15.00
Foreign Trade Statistics 1st Qtr. 2008	10 June 2008	15.00
Demographic Bulletin 1st Qtr. 2008	10 June 2008	Free
Economic Profile 1st Qtr. of 2008	24 July 2008	15.00
<b>Annual Publications</b>		
Government Sector of Aruba 1997-2007	24 January 2008	26.00
Cost Structure of Businesses in Aruba 1996-2004	18 February 2008	15.00
Statistical Yearbook 2007	03 June 2008	30.00
Statistical Orientation 2007	07 July 2008	Free
Tourist Profile 2007	16 July 2008	30.00
<b>Incidental Publications</b>		
Income and Expenditure Survey 2006	16 July 2008	25.00



<b>Consumer Price Index</b>						YTD <sup>1</sup>	YTD	Monthly	Yearly
Sector	May '07	Jun '07	May '08	Jun '08	2007	2008	% change	% change	
					in %				
Food	136.8	138.2	146.4	147.2	7.7	4.5	0.6	6.5	
Beverage & tobacco	129.3	129.7	133.1	133.4	8.0	1.8	0.2	2.9	
Clothing & footwear	127.5	127.6	141.7	140.1	0.8	1.9	-1.1	9.8	
Housing	133.0	139.3	152.8	157.8	8.6	6.0	3.3	13.3	
Household operation	124.1	124.8	126.0	126.9	5.9	2.3	0.7	1.7	
Health	99.9	99.9	100.3	100.2	-0.2	0.3	-0.1	0.3	
Transport & comm	116.7	117.9	125.9	129.4	7.3	7.9	2.7	9.7	
Leisure & recreation	119.9	121.3	127.8	128.6	5.8	3.2	0.7	6.0	
Goods & services n.e.c.	118.3	120.0	125.4	126.3	5.1	2.9	0.7	5.2	
<b>Total Index</b>	<b>125.9</b>	<b>128.1</b>	<b>136.8</b>	<b>138.9</b>	<b>6.4</b>	<b>4.6</b>	<b>1.5</b>	<b>8.4</b>	
Fuel Surcharge (in Afl.)	0.17	0.21	0.28	0.30	27.5	15.4	8.7	47.0	
Water (in Afl.)	173.59	195.11	228.95	248.71	15.3	12.6	8.6	27.5	
Aruba Gasoline (in Afl. per ltr)	2.06	2.15	2.40	2.57	23.3	18.8	6.8	19.5	
Aruba Diesel (in Afl. per ltr)	1.62	1.62	2.31	2.51	10.8	27.4	8.8	55.4	
US Gasoline (in \$ per ltr)	83.12	80.74	99.50	107.11	32.1	34.3	7.6	32.7	
US Diesel (in \$ per ltr)	73.87	74.19	116.91	123.57	7.6	40.0	5.7	66.6	
Crude Oil (in \$)	63.84	66.74	117.52	127.39	17.1	44.9	8.4	90.9	
<b>Utilities</b>						YTD	YTD	Monthly	Yearly
		May '07	Jun '07	May '08	Jun '08	2007	2008	% change	% change
<b>Electricity supplied to Elmar for distribution (in MWh)</b>									
Total average	69,881	67,624	68,820	68,178	388,253	386,025	-0.9	0.8	
<b>Water consumption (in m3)</b>									
Houses	636,379	622,394	638,758	584,631	3,588,141	3,539,966	-8.5	-6.1	
Companies	122,315	115,882	134,862	123,474	686,470	761,050	-8.4	6.6	
Hotels	266,559	225,476	271,973	262,061	1,448,467	1,661,096	-3.6	16.2	
Government	22,219	22,168	14,025	14,247	125,207	84,413	1.6	-35.7	
<b>Total average</b>	<b>1,047,472</b>	<b>985,920</b>	<b>1,059,619</b>	<b>984,413</b>	<b>5,848,286</b>	<b>6,046,525</b>	<b>-7.1</b>	<b>-0.2</b>	
<b>Tourism</b>						YTD	YTD	Monthly	Yearly
		May '07	Jun '07	May '08	Jun '08	2007	2008	% change	% change
<b>Cruise tourism</b>									
Cruise Passengers	23,345	10,722	59,775	7,084	277,186	288,996	-88.1	-33.9	
Cruise calls	21	10	31	2	181	195	-93.5	-80.0	
Crew members (cruise)	10,701	4,931	25,445	n.a.	122,845	n.a.	n.a.	n.a.	
Total number of visitors	75,162	69,533	n.a.	n.a.	642,666	n.a.	n.a.	n.a.	
<b>Hotel statistics<sup>2</sup></b>									
Room nights rented	148,480	142,309	137,618	124,936	972,627	949,731	-9.2	-12.2	
Occupancy in %	67.8	70.8	72.9	69.6	78.1	80.8	-4.5	-1.7	
Avg. daily rate in Afl.	270.43	272.72	253.09	250.26	355.44	364.93	-1.1	-8.2	
Revpar in Afl.	109.64	119.21	96.73	94.73	167.24	164.30	-2.1	-20.5	
Room revenue (in thousands Afl.)	23,697	23,669	18,254	16,784	208,393	193,115	-8.1	-29.1	
<b>Passenger traffic</b>									
Arrivals	62,812	67,971	74,209	71,553	421,246	498,580	-3.6	5.3	
Departures	63,262	63,775	72,731	69,303	424,101	497,690	-4.7	8.7	
In transit	2,613	3,253	3,930	4,879	18,259	26,073	24.1	50.0	

<sup>1)</sup> YTD (Year to date) refers to the period of January 1st of the current year to the month under review.

<sup>2)</sup> Hotels Statistics are based on the reported number of room nights and room revenue

Tourism					YTD <sup>1</sup>	YTD	Monthly	Yearly
	May '07	Jun '07	May '08	Jun '08	2007	2008	% change	% change
<b>Landings</b>								
Commercial	960	960	1,048	1,018	6,083	7,132	-2.9	6.0
Non-commercial	177	166	307	336	1,620	2,073	9.4	102.4

<sup>1)</sup> YTD (Year to date) refers to the period of January 1st of the current year to the month under review.

<sup>2)</sup> Hotels Statistics are based on the reported number of room nights and room revenue

Sources: Central Bureau of Statistics Aruba, ATA, CTA, Department of Immigration, WEB Aruba N.V.