

## Consumer Price Index, base period December 2006 February 2009

*The Central Bureau of Statistics presents the most important findings for the Consumer Price Index (CPI) for the month of February 2009.*

### Overview Consumer Price Indices

Feb-08	Jan-09	Feb-09
111.50	107.44	108.23

- The CPI for February 2009 is **108.23**, an increase of **0.74%** compared to the index of January 2009 (**107.44**).
- The percentage change for the first 2 months (January to February 2009) of the CPI is 0.33, compared to 1.44 for the same period of last year.
- The percentage change of the CPI over the last 12 months (February 2008 and February 2009) is -2.94, a decrease of 12.81 percentage points (ppts) compared to the percentage change for the same period of last year (9.87).
- The period average percentage change of the CPI for the period February 2008 - February 2009 is 6.78, an increase of 0.37 ppts compared to the period average percentage change over the period February 2007 - February 2008 (6.41).

### Table 1 Overview percentage change CPI

Period		2009	2008 <sup>3</sup>
Current month	Jan-Feb	0.74	0.47
Year-to-date	Dec-Feb	0.33	1.44
Last 12 months <sup>1</sup>	Feb-Feb	-2.94	9.87
Last 24 months <sup>2</sup>	Feb-Feb	6.78	6.41

Source: Central Bureau of Statistics Aruba

<sup>1</sup> End of period inflation

<sup>2</sup> Period average inflation

<sup>3</sup> Please note: 2008 has been revised

In February 2009 the sectors that show the highest percentage changes in the CPI are:

CPI	0.74
• Transport	2.57
• Alcoholic beverages and tobacco	2.29
• Health	1.17
• Recreation and culture	1.05
• Miscellaneous goods and services	0.77

Table 2 Percentage change by sector

Sector	Weight coefficient	Effect Feb	Percentage changes			
			Monthly Feb	Year to date Dec - Feb	End of period Feb 08 - Feb 09	Period average Feb 08 - Feb 09
<b>Consumer Price Index</b>	<b>10,000</b>	<b>0.74</b>	<b>0.74</b>	<b>0.33</b>	<b>-2.94</b>	<b>6.78</b>
01. Food and non-alcoholic beverages	1,125.3	0.00	0.02	0.01	10.52	11.39
02. Alcoholic beverages and tobacco	81.9	0.02	2.29	2.55	4.46	3.09
03. Clothing and footwear	625.9	0.02	0.25	1.43	-1.44	6.29
04. Housing	2,553.3	0.08	0.30	0.56	-14.69	7.81
05. Household operation	741.3	0.01	0.15	0.79	3.29	3.96
06. Health	235.8	0.02	1.17	1.38	5.21	13.38
07. Transport	1,815.4	0.43	2.57	-0.93	-4.93	8.51
08. Communications	706.3	0.00	0.01	0.01	-0.70	-0.62
09. Recreation and culture	891.2	0.10	1.05	0.27	1.99	3.95
10. Education	83.0	0.00	0.00	0.00	-2.28	6.21
11. Restaurants and hotels	373.7	0.01	0.24	0.29	8.69	3.71
12. Miscellaneous goods and services	767.0	0.05	0.77	1.51	3.14	3.21

Source: Central Bureau of Statistics Aruba

## Monthly Percentage Change

The consumption basket of the CPI consists of 452 goods and services. Compared to January 2009, 47.3% of these products had an increase in price, while 17.9% showed a decrease and the remaining 34.7% had no change in price.

The prices of all products (goods and services) in the consumption basket of the CPI show an increase of **0.74%** for the month of February 2009 compared to the prices observed in January 2009.

The prices of goods increased by 0.86% and caused an influence of 0.55 ppts on the percentage change of the CPI. The prices of services show also an increase (0.52%) and had an influence of 0.19 ppts on the CPI.

**Table 3 Overview percentage change and effect on the CPI of February 2009 by type of products**

Period	Index		Monthly change	Effect
	Jan-09	Feb-09		
Total	107.44	108.23	0.74	0.74
Goods	110.35	111.30	0.86	0.55
Services	102.54	103.08	0.52	0.19

Source: Central Bureau of Statistics Aruba

In February 2009, the sectors that had the greatest influence in the percentage change of the CPI are:

- Transport (0.43), where increases in prices were registered in the categories "Operation of personal transport equipment" and "Purchase of vehicles".
- Recreation and culture (0.10), where increases in prices were mainly registered in the categories "Holidays" and "Recreational and cultural services".
- Housing (0.08), where increases in prices were registered in the categories "Actual rentals for housing" and "Maintenance and repair of the dwelling".

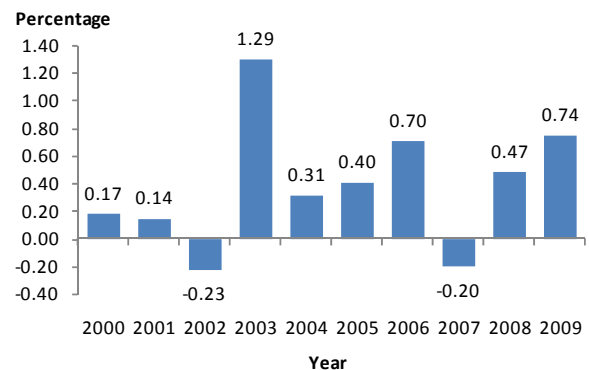
- Miscellaneous goods and services (0.05), where an increase in prices was registered in the category "Personal care".
- Health (0.02), where an increase in prices was mainly registered in the category "Medical products, appliances and equipment".

**Table 4 Categories with the greatest effect on the CPI of February 2009**

Category	Monthly change	Effect
Operation of personal transport equipment	5.42	0.41
Holidays	7.85	0.05
Actual rentals for housing	0.45	0.04
Personal care	1.61	0.04
Maintenance and repair of the dwelling	0.76	0.03
Recreational and cultural services	0.87	0.03
Medical products, appliances and equipment	1.47	0.02
Purchase of vehicles	0.23	0.02

Source: Central Bureau of Statistics Aruba

**Graph 1 Monthly percentage change of the CPI for February, 2000 - 2009**



Graph 1 shows that the monthly percentage change of the CPI increased by 0.27 ppts to 0.74 in February of 2009 from (0.47) in February of 2008.

**Table 5 Percentage changes by month, 2007 - 2009**

Month	Percentage changes											
	2007				2008				2009			
	Monthly	Year-to-date	End of period	Period average	Monthly	Year-to-date	End of period	Period average	Monthly	Year-to-date	End of period	Period average
January	1.70	1.70	3.88	3.58	0.96	0.96	9.13	5.83	-0.41	-0.41	-3.19	7.88
February	-0.20	1.49	2.94	3.44	0.47	1.44	9.87	6.41	0.74	0.33	-2.94	6.78
March	0.82	2.32	3.95	3.41	0.68	2.13	9.72	6.89				
April	0.28	2.60	3.72	3.41	0.58	2.73	10.05	7.42				
May	1.16	3.79	3.67	3.38	0.94	3.70	9.82	7.93				
June	2.26	6.14	5.70	3.52	1.78	5.54	9.30	8.23				
July	-0.43	5.68	5.04	3.62	1.70	7.33	11.64	8.79				
August	0.90	6.63	5.53	3.73	1.82	9.29	12.66	9.39				
September	-0.39	6.22	5.11	3.82	-0.58	8.66	12.45	10.00				
October	0.54	6.79	6.83	4.25	-0.85	7.74	10.90	10.33				
November	1.32	8.20	8.29	4.78	-4.61	2.77	4.40	9.98				
December	1.59	9.92	9.92	5.39	-4.51	-1.86	-1.86	8.96				

Source: Central Bureau of Statistics Aruba

Please note: 2007 and 2008 have been revised

**Table 6 Prices of crude oil, utilities and gasoline, 2008 - 2009**

Month	2008						2009					
	Crude oil <sup>1</sup>	Fuel surcharge <sup>2</sup>	Electricity <sup>3</sup>	Water <sup>4</sup>	Gasoline <sup>5</sup>	Diesel	Crude oil	Fuel surcharge	Electricity	Water	Gasoline	Diesel
January	89.87	28.00	317.21	156.66	210.90	192.70	39.93	14.20	217.09	116.13	141.40	128.10
February	90.82	28.00	317.21	156.66	213.10	191.60	41.23	14.20	217.09	116.13	153.80	133.70
March	100.46	28.00	317.21	156.66	217.70	200.30						
April	104.95	28.00	317.21	156.66	227.10	221.00						
May	117.13	28.00	317.21	156.66	240.40	231.00						
June	128.06	30.43	334.84	167.98	256.70	251.30						
July	133.52	33.48	356.97	176.85	266.20	257.90						
August	115.86	38.55	393.75	188.52	259.70	256.50						
September	98.52	36.52	379.02	187.21	247.30	225.70						
October	73.95	32.46	349.57	174.22	256.60	216.70						
November	50.90	24.35	290.73	147.38	185.80	175.30						
December	39.71	14.20	217.09	116.13	156.80	153.80						

Source: Central Bureau of Statistics Aruba

<sup>1</sup> Average world crude oil price per barrel in US\$ (Source: U.S. Energy Information Administration)

<sup>2</sup> Fuel surcharge in Afl cents per kWh

<sup>3</sup> Electricity price in Afl is based on an average household usage of 725.5 kWh (Revised figures)

<sup>4</sup> Water price in Afl is based on an average household usage (Revised figures)

<sup>5</sup> Gasoline and diesel prices in Afl cents per liter

### Change in prices of crude oil, utilities and gasoline in February 2009

The prices of utilities (electricity and water supply), gasoline and diesel are for the greater part determined by international crude oil prices. In February 2009 the average price of crude oil increased with US\$ 1.30 per barrel compared to January.

Fuel surcharge did not change in February, it stayed at Afl 14.20 cents per kWh. The price of electricity and water did not change either compared to January 2009. The average electricity price remained at Afl 217.09, while the price of water remained at Afl 116.13.

The price of gasoline shows an increase for the first time again since October 2008. In February 2009 it increased by Afl 0.12 (8.77%) causing an effect of 0.39 ppts on the CPI. The price of diesel also registered its first increase since the month of July 2008. Compared to January 2009 it increased by Afl 0.06 (4.37%) causing an effect of 0.01 ppts on the CPI.

In February 2009, utilities, gasoline and diesel as a group show an increase in prices of 2.58% compared to January 2009, and had an influence of 0.40 ppts on the CPI, while the remaining 448 elementary aggregates, as a group, experienced an increase in prices of 0.40%, causing an effect of 0.34 ppts on the CPI.

**Table 7 Effect on the CPI of February 2009 of elementary aggregates which are dependent on crude oil prices**

Category	Weight	Monthly change	Effect
Electricity	721.0	0.00	0.00
Gasoline	530.6	8.77	0.39
Water supply	437.4	0.00	0.00
Diesel	21.8	4.37	0.01
Total group	1,710.8	2.58	0.40
Remaining aggregates	8,289.2	0.40	0.34
Total Index	10,000.0	0.74	0.74

Source: Central Bureau of Statistics Aruba