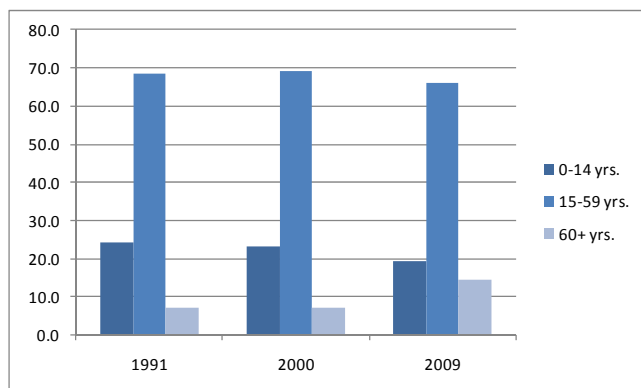


- The population growth in 2009 is 10.23 per thousand, totaling 107,138 persons.
- The female population outnumbers the male population by 4,452. The sex ratio at the end of 2009 was 92 men for every 100 women.
- The number of children is steadily decreasing while the number of the elderly population (60+) is increasing. The children ages 0-14 years, represent 19.4 percent of our population and the elderly ages 60+, 14.4 percent. In 2000 the children accounted for 23.1 percent of the total population and the elderly about 7 percent.

Figure 1. Population growth 1991-2009, specific age-groups



- 1,213 babies were registered at the Population Registry Office during 2009.
- 148 were born to a teenage mother.
- 58.4 percent of the registered babies were born out of wedlock.
- About 56 percent of these babies born out of wedlock are born to mothers aged between 20 and 29 years.

Figure 2. Registered number of babies born to teenage mothers in percentage of all births 2000-2009

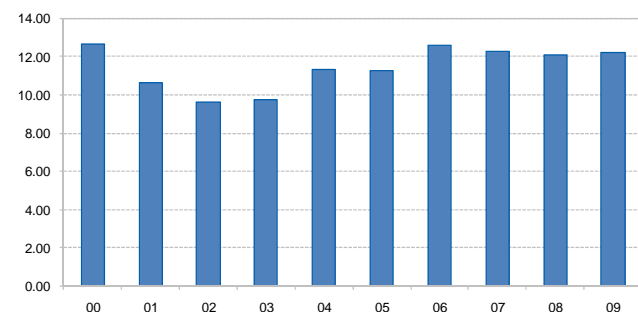


Table 1 Population by age and sex

|              | End of year    |                |                | 4th Q 2009    |               |                | Index (2000=100) |
|--------------|----------------|----------------|----------------|---------------|---------------|----------------|------------------|
|              | 2006           | 2007           | 2008           | Male          | Female        | Total          |                  |
| 0-4 yrs.     | 6,379          | 6,352          | 6,325          | 3,244         | 3,062         | 6,306          | -10.28           |
| 5-9 yrs.     | 7,339          | 7,141          | 7,004          | 3,463         | 3,337         | 6,800          | -5.42            |
| 10-14 yrs.   | 7,736          | 7,770          | 7,750          | 3,884         | 3,803         | 7,687          | 13.15            |
| 15-19 yrs.   | 7,258          | 7,415          | 7,519          | 3,805         | 3,699         | 7,504          | 20.96            |
| 20-24 yrs.   | 5,980          | 6,017          | 6,090          | 3,145         | 3,084         | 6,229          | 21.49            |
| 25-29 yrs.   | 6,349          | 6,253          | 6,372          | 3,116         | 3,252         | 6,369          | -0.23            |
| 30-34 yrs.   | 7,477          | 7,288          | 7,197          | 3,390         | 3,889         | 7,278          | -7.30            |
| 35-39 yrs.   | 8,910          | 8,880          | 8,790          | 4,103         | 4,515         | 8,618          | -5.56            |
| 40-44 yrs.   | 9,765          | 9,500          | 9,393          | 4,395         | 4,833         | 9,228          | 8.26             |
| 45-49 yrs.   | 9,385          | 9,630          | 9,871          | 4,785         | 5,280         | 10,065         | 43.55            |
| 50-54 yrs.   | 7,589          | 7,926          | 8,354          | 4,022         | 4,657         | 8,680          | 58.76            |
| 55-59 yrs.   | 5,860          | 6,194          | 6,535          | 3,252         | 3,660         | 6,912          | 67.14            |
| 60-64 yrs.   | 4,369          | 4,634          | 4,890          | 2,377         | 2,740         | 5,117          | 46.45            |
| 65-69 yrs.   | 3,366          | 3,476          | 3,596          | 1,706         | 1,996         | 3,701          | 40.11            |
| 70-74 yrs.   | 2,576          | 2,663          | 2,802          | 1,221         | 1,672         | 2,893          | 68.17            |
| 75-79 yrs.   | 1,591          | 1,786          | 1,836          | 790           | 1,151         | 1,940          | 83.31            |
| 80-84 yrs.   | 843            | 829            | 938            | 389           | 639           | 1,028          | 43.19            |
| 85-89 yrs.   | 400            | 458            | 489            | 179           | 303           | 482            | 27.40            |
| 90-94 yrs.   | 192            | 193            | 202            | 55            | 150           | 204            | 25.52            |
| 95+ yrs.     | 93             | 89             | 97             | 23            | 74            | 97             | 95.41            |
| <b>Total</b> | <b>103,459</b> | <b>104,494</b> | <b>106,050</b> | <b>51,343</b> | <b>55,795</b> | <b>107,138</b> | <b>17.65</b>     |

Source: Population Registry Office

Table 2 Live births by age of mother

|              | 2006        | 2007        | 2008        | 2009       |            |            |            | Total        |
|--------------|-------------|-------------|-------------|------------|------------|------------|------------|--------------|
|              |             |             |             | 1st Q      | 2nd Q      | 3rd Q      | 4th Q      |              |
| < 15 yrs.    | 3           | 3           | 5           | 1          | 0          | 1          | 0          | 2            |
| 15-19 yrs.   | 152         | 149         | 142         | 45         | 23         | 39         | 39         | 146          |
| 20-24 yrs.   | 309         | 305         | 309         | 77         | 59         | 76         | 72         | 284          |
| 25-29 yrs.   | 316         | 314         | 286         | 89         | 80         | 67         | 86         | 322          |
| 30-34 yrs.   | 234         | 280         | 252         | 84         | 58         | 60         | 67         | 269          |
| 35-39 yrs.   | 165         | 149         | 177         | 45         | 32         | 49         | 32         | 158          |
| 40-44 yrs.   | 47          | 36          | 46          | 7          | 7          | 8          | 10         | 32           |
| 45-49 yrs.   | 1           | 2           | 1           | 0          | 0          | 0          | 0          | 0            |
| 50+ yrs.     | 0           | 0           | 0           | 0          | 0          | 0          | 0          | 0            |
| Not reported | 0           | 1           | 0           | 0          | 0          | 0          | 0          | 0            |
| <b>Total</b> | <b>1227</b> | <b>1239</b> | <b>1218</b> | <b>348</b> | <b>259</b> | <b>300</b> | <b>306</b> | <b>1,213</b> |

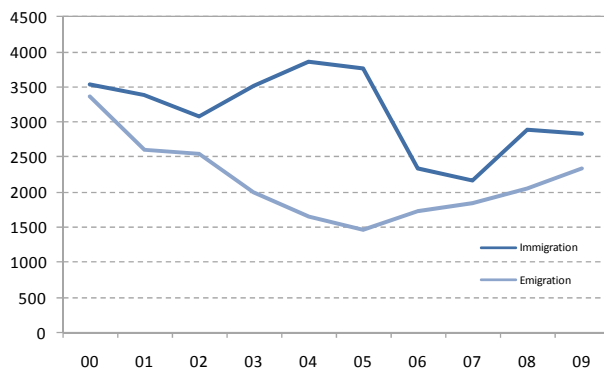
Source: Population Registry Office

Table 3 Deaths by age

|              | 2006       | 2007       | 2008       | 2009       |            |            |            | Total      |
|--------------|------------|------------|------------|------------|------------|------------|------------|------------|
|              |            |            |            | 1st Q      | 2nd Q      | 3rd Q      | 4th Q      |            |
| < 1          | 8          | 4          | 2          | 0          | 2          | 2          | 1          | 5          |
| 1-49         | 70         | 68         | 62         | 15         | 15         | 20         | 24         | 74         |
| 50-59        | 43         | 70         | 68         | 21         | 17         | 10         | 17         | 65         |
| 60-69        | 115        | 100        | 94         | 23         | 37         | 29         | 37         | 126        |
| 70-79        | 143        | 120        | 150        | 45         | 38         | 36         | 48         | 167        |
| 80-89        | 114        | 94         | 108        | 32         | 46         | 21         | 35         | 134        |
| 90+ yrs.     | 44         | 65         | 39         | 15         | 12         | 12         | 13         | 52         |
| <b>Total</b> | <b>537</b> | <b>521</b> | <b>523</b> | <b>151</b> | <b>167</b> | <b>130</b> | <b>175</b> | <b>623</b> |

Source: Population Registry Office

- In 2009 2,833 immigrants registered at the Population Registry Office.
- 50 percent of the immigrants were foreign-born.
- 23 percent of them were Dutch born in Aruba or the Netherlands Antilles.
- 54 percent of the immigrants were male compared to prior years where the majority of immigrants were women.
- 2,333 persons left the island during 2009.
- 51 percent of the emigrants are Dutch born in Aruba or the Netherlands Antilles.

**Figure 3. Migration 2000-2009 (absolute)**

**Table 6 Marriages by Aruban status and place of marriage**

|   | 2006         | 2007         | 2008       |
|---|--------------|--------------|------------|
| Both partners residents, married in Aruba                 | 351          | 379          | 263        |
| Both partners residents, married elsewhere                | 27           | 40           | 26         |
| Both partners non-residents, married in Aruba             | 460          | 482          | 427        |
| Male resident, married elsewhere with non-resident Female | 58           | 25           | 46         |
| Male resident, married in Aruba with non-resident Female  | 23           | 14           | 23         |
| Female resident, married elsewhere with non-resident Male | 36           | 53           | 18         |
| Female resident, married in Aruba with non-resident Male  | 29           | 20           | 29         |
| Unknown   | 22           | 0            | 0          |
| <b>Total</b>  | <b>1,006</b> | <b>1,013</b> | <b>832</b> |

Source: Population Registry Office  
 Note: Data for 2009 not yet available

**Table 4 Domiciliation by nationality and place of birth**

|                                | 2006         | 2007         | 2008         | 2009       |            |            |            | Total        |
|--------------------------------|--------------|--------------|--------------|------------|------------|------------|------------|--------------|
|                                |              |              |              | 1st Q      | 2nd Q      | 3rd Q      | 4th Q      |              |
| Dutch born in Aruba/Neth. Ant. | 847          | 638          | 643          | 146        | 150        | 189        | 167        | 652          |
| Dutch born in the Netherlands  | 623          | 465          | 510          | 115        | 152        | 182        | 117        | 566          |
| Dutch born elsewhere           | 192          | 143          | 151          | 47         | 32         | 38         | 30         | 147          |
| Foreign-born                   | 600          | 839          | 1,509        | 510        | 349        | 283        | 266        | 1,408        |
| Unknown                        | 79           | 72           | 72           | 24         | 11         | 14         | 11         | 60           |
| <b>Total</b>                   | <b>2,341</b> | <b>2,157</b> | <b>2,885</b> | <b>842</b> | <b>694</b> | <b>706</b> | <b>591</b> | <b>2,833</b> |

Source: Population Registry Office

**Table 5 Departures by nationality and place of birth**

|                                | 2006         | 2007         | 2008         | 2009       |            |              |            | Total        |
|--------------------------------|--------------|--------------|--------------|------------|------------|--------------|------------|--------------|
|                                |              |              |              | 1st Q      | 2nd Q      | 3rd Q        | 4th Q      |              |
| Dutch born in Aruba/Neth. Ant. | 813          | 921          | 1,059        | 173        | 216        | 570          | 221        | 1,180        |
| Dutch born in the Netherlands  | 513          | 455          | 451          | 61         | 148        | 255          | 79         | 543          |
| Dutch born elsewhere           | 159          | 202          | 251          | 46         | 48         | 108          | 45         | 247          |
| Foreign-born                   | 237          | 260          | 291          | 82         | 91         | 102          | 88         | 363          |
| Unknown                        | 0            | 1            | 1            | 0          | 0          | 0            | 0          | 0            |
| <b>Total</b>                   | <b>1,722</b> | <b>1,839</b> | <b>2,053</b> | <b>362</b> | <b>503</b> | <b>1,035</b> | <b>433</b> | <b>2,333</b> |

Source: Population Registry Office

**Table 7 Divorces by Aruban status and place of divorce**

|  | 2006       | 2007       | 2008       | 2009       |            |           |            | Total      |
|--|------------|------------|------------|------------|------------|-----------|------------|------------|
|  |            |            |            | 1st Q      | 2nd Q      | 3rd Q     | 4th Q      |            |
| Both partners residents, divorced in Aruba                 | 455        | 356        | 266        | 79         | 89         | 65        | 111        | 344        |
| Both partners residents, divorced elsewhere                | 1          | 1          | 2          | 1          | 0          | 1         | 0          | 2          |
| Both partners non-residents, divorced in Aruba             | 2          | 0          | 0          | 0          | 0          | 0         | 1          | 1          |
| Male resident, divorced elsewhere with non-resident Female | 11         | 7          | 1          | 3          | 0          | 2         | 1          | 6          |
| Male resident, divorced in Aruba with non-resident Female  | 22         | 25         | 13         | 10         | 9          | 4         | 5          | 28         |
| Female resident, divorced elsewhere with non-resident Male | 6          | 2          | 0          | 1          | 1          | 3         | 0          | 5          |
| Female resident, divorced in Aruba with non-resident Male  | 33         | 26         | 15         | 7          | 5          | 6         | 6          | 24         |
| Unknown  | 1          | 0          | 0          | 0          | 0          | 0         | 0          | 0          |
| <b>Total</b>   | <b>531</b> | <b>417</b> | <b>297</b> | <b>101</b> | <b>104</b> | <b>81</b> | <b>124</b> | <b>410</b> |

Source: Population Registry Office