





### Highlights June 2012 in Review

#### Consumer Prices:

- Year over year inflation up by 0.9 percent
- Period average inflation at 4.8 percent in June 2012
- Price of gasoline down by Afl. 0.17 per liter in June 2012
- Average price of diesel down by Afl. 0.13 in June 2012
- WTI crude oil price reached \$82.30 per barrel
- Brent (Europe) crude oil price at \$95.16 per barrel

#### Utilities:

- Total average water distribution up by 7.3 percent
- Average electricity distribution down by 7.5 percent

#### Foreign Trade:

- Import of goods down by 4.2 percent in June 2012
- Value of export fell with 10.9 percent in June 2012

#### Tourism:

- Total stayover visitors up by 7.5 percent in June 2012
- U.S. visitors rose by 4.1 percent in June 2012
- Visitors from Venezuela up by 25.6 percent in June 2012

#### Airport and Passenger Traffic:

- Commercial landings down by 12.2 percent in June 2012
- Airport visitor arrivals up by 7.8 percent in June 2012

#### Enterprises:

- 71 business licenses granted in June 2012

### Monthly Economic Indicators

June 2012	% Change	
	Last Month	Last Year
<b>Consumer prices</b>		
Total index	-0.5	0.9
<b>Utilities</b>		
Water consumption	-0.5	7.3
Electricity distribution	-7.1	-7.5
<b>Foreign trade</b>		
Import	-8.3	-4.2
Export	-22.6	-10.9
<b>Government</b>		
Total tax revenue	n.a.	n.a.
<b>Tourism</b>		
Total stayover visitors	10.6	7.5
USA	4.5	4.1
Venezuela	36.4	25.6
Colombia	138.1	-4.3
Netherlands	-0.7	0.5
<b>Cruise passenger arrivals</b>		
	n.a.	n.a.
<b>Airport &amp; passenger traffic</b>		
Commercial landings	-2.9	-12.2
Arrival visitors	9.0	7.8

Source: Central Bureau of Statistics Aruba

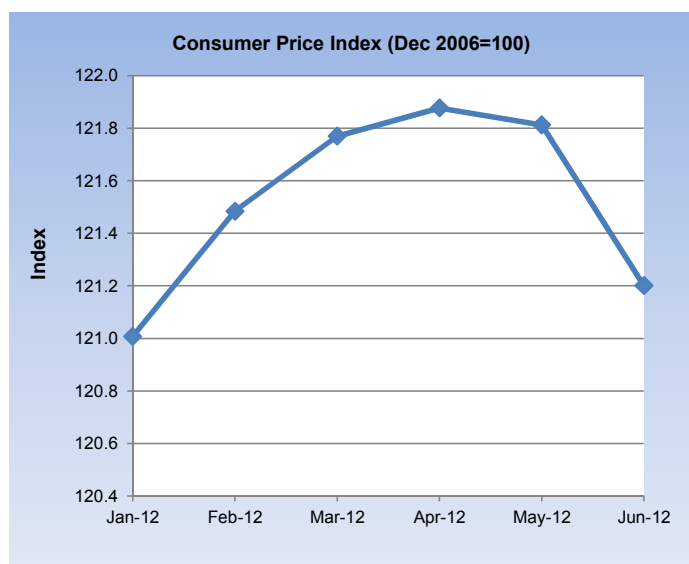
L.G. Smith Boulevard 160  
Oranjestad, Aruba  
Phone: +297 5837433  
Fax: +297 5838057  
www.cbs.aw

## Table of Contents

■ Consumer Price Index.....	5
■ International aspects.....	6
■ Utilities.....	7
■ Water distribution.....	8
■ Electricity distribution.....	9
■ Foreign Trade.....	10
■ Tourism.....	11
■ Corresponding Tables	



## 1.1 Consumer Price Index



Month	2009	2010	2011	2012
-------	------	------	------	------

### Consumer price index

March	109.0	114.4	115.9	121.8
April	109.3	114.8	118.8	121.9
May	109.9	115.0	120.1	121.8
June	112.5	114.5	120.1	121.2

### Consumer price index monthly %-change

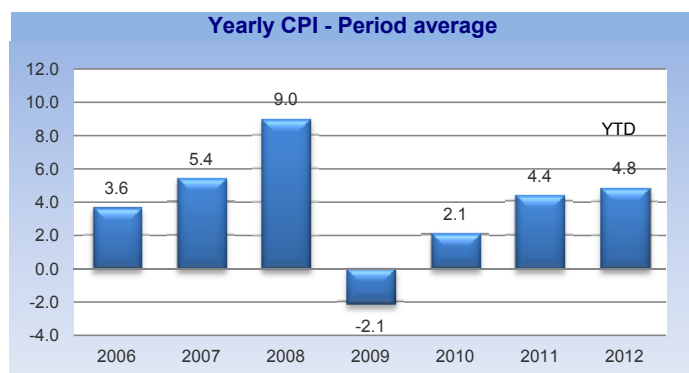
March	0.6	0.3	0.7	0.2
April	0.3	0.4	2.5	0.1
May	0.5	0.2	1.1	-0.1
June	2.4	-0.4	0.0	-0.5

### Consumer price index annual %-change

March	-2.9	5.0	1.3	5.1
April	-3.2	5.1	3.5	2.6
May	-3.6	4.7	4.4	1.4
June	-3.0	1.8	4.9	0.9

### Consumer price index period average

March	5.7	-0.1	0.9	5.5
April	4.6	0.6	0.8	5.4
May	3.5	1.3	0.8	5.2
June	2.4	1.7	1.1	4.8



## Key points

In June 2012, the total consumer price index declined by 0.5 percent compared to May 2012. With the exception of Food & non-alcoholic beverages (+0.1%), Alcoholic beverages & tobacco (+0.3%), Clothing & footwear (+0.1%), Recreation & culture (+0.6%) and Education (+0.1%), decreases in the average prices has been recorded for Household operation (-0.7%), Health (-1.0%), Transport (-2.8%), Communications (-0.5%) and Restaurant & hotels (-0.2%). At the end of June 2012, the twelve-month average rate of inflation was at 4.8 percent, up from 1.1 percent recorded at the end of June 2011.

On a yearly basis, consumer prices increased by 0.9 percent in June 2012. Major price increases were recorded in the following sectors:

1. *Housing*; Average prices in the Housing sector increased by 4.0 percent compared to June 2011, as a result of increases in the prices of Water supply & misc. services related to dwellings (+11.9%), Electricity, gas & other fuels (+3.8%) and Actual rentals for housing (+3.8%). Prices of Maintenance & repair of dwellings fell with 6.9 percent in June 2012.

2. *Food & non-alcoholic beverages*; Prices in this sector rose by 2.9 percent in June 2012. Average prices of Food and Alcoholic beverages increased by 2.8 and 3.0 percent respectively, when compared to June 2011.

3. *Restaurants & hotels*; Compared to June 2011, prices in the Restaurant & hotel sector increased by 5.6 percent in June 2012. Higher prices were recorded for Catering services (+5.7%) and Accommodation services (+0.5%).

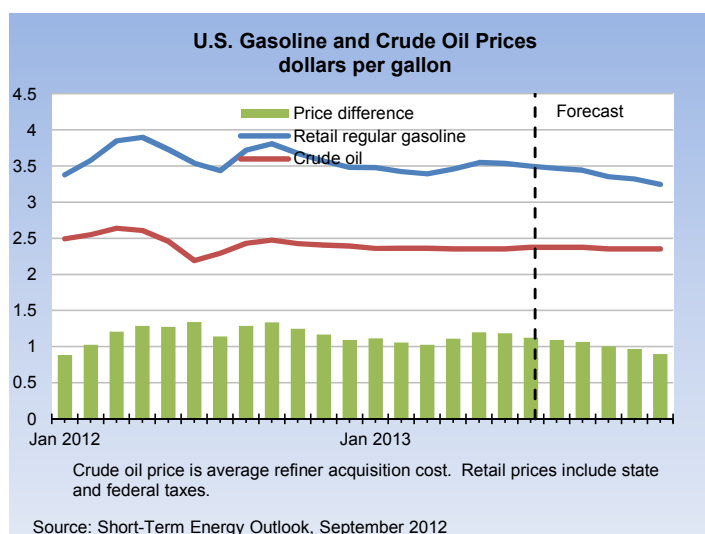
## Related statistics in this bulletin

- 1.2 International aspects
- 2.1 Utilities
- Corresponding tables

## Related statistics publications

- Consumer price index
- Economic profile
- Statistical yearbook

## 1.2 International aspects



Month	Mar-12	Apr-12	May-12	Jun-12
-------	--------	--------	--------	--------

### Consumer price index monthly %-change

United States	0.8	0.3	-0.1	-0.1
Netherlands	1.1	0.4	-0.1	-0.5
Curacao	0.4	0.3	0.4	0.2
Aruba	0.2	0.1	-0.1	-0.5

### Gasoline, diesel and world crude oil prices

#### United States

Gasoline (\$/gal)	3.85	3.90	3.73	3.54
Diesel (\$/gal)	4.13	4.12	3.98	3.76

#### Crude oil (\$/barrel)

WTI - Cushing, Okl	106.16	103.32	94.66	82.30
Brent, Europe	125.45	119.75	110.34	95.16

### Export price monthly %-change

USA	0.8	0.4	-0.5	-1.7
-----	-----	-----	------	------

Month	Period	Tourists	%-Ch
-------	--------	----------	------

### Latest tourist arrivals

	2012		
St. Maarten*	Jan-Mar	147,712	10.2
Antigua & Barbuda	Jan-Jun	136,461	3.8
Aruba	Jan-Jun	442,010	2.0
Bahamas	Jan-Mar	355,746	3.8
Barbados	Jan-Jun	283,409	-1.9
Cayman Islands	Jan-May	151,407	2.2
Cuba	Jan-May	1,437,841	5.5
Curacao	Jan-May	170,408	8.7
Dominican Republic*	Jan-Jun	2,453,772	7.7
Jamaica	Jan-Mar	554,674	0.2
Martinique	Jan-Jun	256,948	1.6
U.S. Virgin Islands	Jan-May	362,131	13.8
Puerto Rico**	Jan-Apr	589,046	4.3
Suriname	Jan-May	88,613	5.2

\* Non-Resident Air Arrivals

\*\* Non-Resident Hotel registrations only

## Key points

In June 2012, the average WTI crude oil price decreased by \$12.36 per barrel compared to the previous month, reaching \$82.30 per barrel. The Brent (Europe) crude oil reached \$95.16 per barrel in June 2012, down from \$110.34 per barrel in the previous month.

The EIA projects the price of the Brent crude oil will average \$112 per barrel in 2012 and \$103 per barrel in 2013, both about 3 percent higher than the previous forecast. The EIA expects the Brent crude oil will average \$93 per barrel in the second half of 2012 and roughly remain at this level throughout this period of forecast. Keep in mind that energy price forecast are highly uncertain.

The EIA projects the average U.S. regular-grade gasoline retail price to average \$3.58 per gallon in the fourth quarter 2012, up from \$3.30 per gallon in the last month's forecast. The EIA expects regular gasoline retail price to reach \$3.64 per gallon in 2012, and \$3.43 per gallon in 2013, both about \$0.11 higher than the previous forecast.

On-highway diesel fuel retail prices, which averaged \$3.84 per gallon in 2011, will average \$3.96 per gallon in 2012 and \$3.73 per gallon in 2013.

## Related statistics in this bulletin

- 1.1 Consumer price index
- 2.1 Utilities

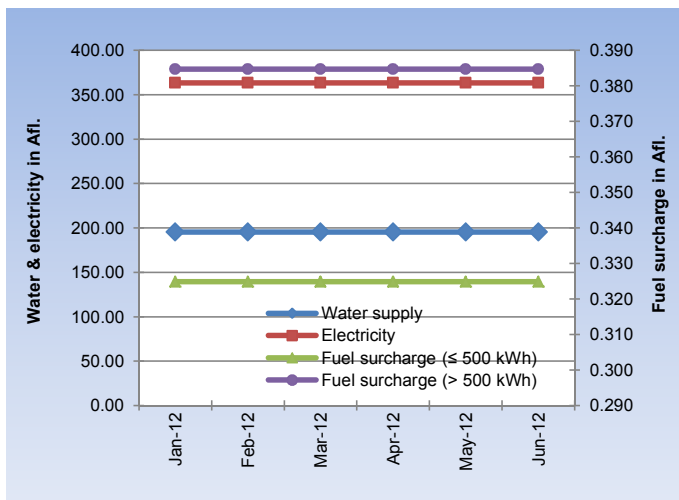
- 5 Tourism
- Corresponding tables

## Related statistics publications

- Consumer price index
- Economic profile

Source: Energy Information Administration, Bureau of labor statistics, Caribbean Tourism Organization

## 2.1 Utilities



Mar-12 Apr-12 May-12 June-12

### Utility prices in Afl.

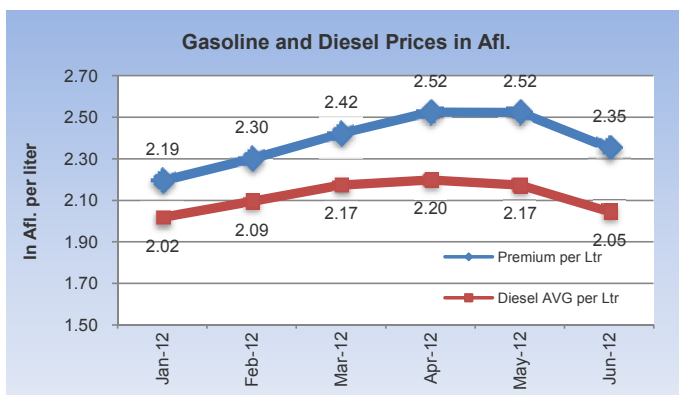
Electricity	363.27	363.27	363.27	363.27
Gasoline	2.42	2.52	2.52	2.35
Water	195.47	195.47	195.47	195.47
Diesel	2.17	2.20	2.17	2.05
Fuel surcharge (≤ 500kWh)	0.325	0.325	0.325	0.325
Fuel surcharge (> 500kWh)	0.385	0.385	0.385	0.385

### Utility prices monthly %-change

Electricity	0.0	0.0	0.0	0.0
Gasoline	5.3	4.3	0.0	-6.8
Water	0.0	0.0	0.0	0.0
Diesel	3.8	1.1	-1.1	-5.8
Fuel surcharge (≤ 500kWh)	0.0	0.0	0.0	0.0
Fuel surcharge (> 500kWh)	0.0	0.0	0.0	0.0

### Utility prices annual %-change

Electricity	17.7	3.9	3.9	3.9
Gasoline	11.7	7.0	0.2	-4.0
Water	27.0	13.3	13.3	13.3
Diesel	9.7	4.6	-0.4	-0.7
Fuel surcharge (≤ 500kWh)	21.1	0.0	0.0	0.0
Fuel surcharge (> 500kWh)	43.4	18.4	18.4	18.4



CPI USA: seasonally unadjusted

<sup>1</sup> Based on an average electricity consumption of 725.5 kWh per month.

<sup>2</sup> Based on an average per household

## Key points

The average price of water and electricity has remained unchanged since August 2011. In June 2012, the price of gasoline fell with Afl. 0.17 per liter, reaching Afl. 2.35 per liter. The average price of diesel decreased by Afl. 0.13 per liter in June 2012, when compared to the previous month, reaching an average price of Afl. 2.05 per liter.

### Prices of utilities in Aruba during July 2012

	Price change	Impact on CPI
Electricity <sup>1</sup>	0.0%	0.00
Gasoline (premium)	-4.9%	-0.32
Water <sup>2</sup>	0.0%	0.00
Diesel	-6.4%	-0.02
Rent	0.1%	0.01
<b>Total impact</b>		<b>-0.33</b>

Source: Central Bureau of Statistics Aruba

Disregarding any other important fluctuations in prices over the month of July 2012, price movement of gasoline, diesel and rent during the month of July 2012 will affect the consumer price index of July 2012 by -0.33.

## Related statistics in this bulletin

- 2.2 Water and electricity distribution
- Corresponding tables

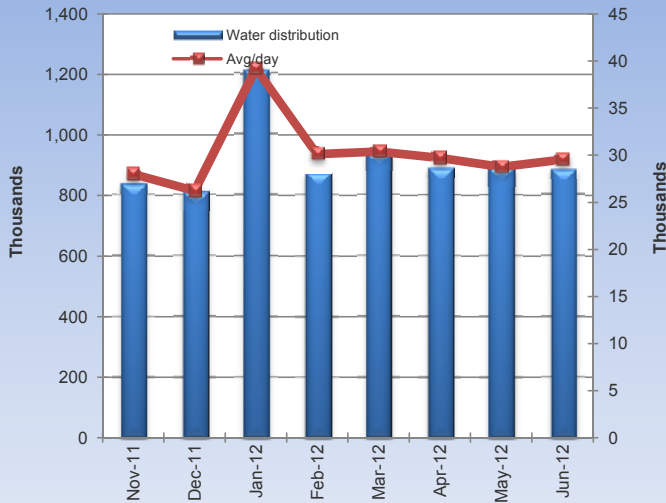
## Related statistics publications

- Consumer price index
- Economic profile
- Statistical yearbook



## 2.2 Water distribution

Monthly water distribution (in m3)



Month	2009	2010	2011	2012
-------	------	------	------	------

### Average water distribution (m3)

March	956,526	1,065,728	977,770	942,047
April	965,801	830,704	905,173	891,761
May	989,731	1,021,219	890,700	891,263
June	1,020,871	984,127	825,874	886,569

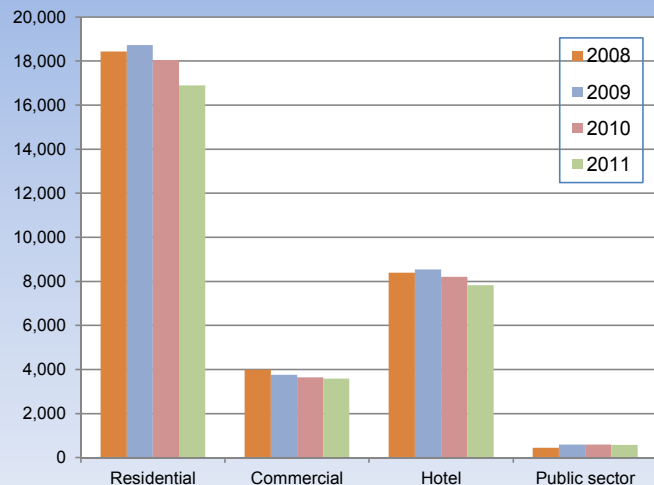
### Average water distribution monthly %-change

March	15.7	12.4	28.7	7.9
April	1.0	-22.1	-7.4	-5.3
May	2.5	22.9	-1.6	-0.1
June	3.1	-3.6	-7.3	-0.5

### Average water distribution annual %-change

March	-8.6	11.4	-8.3	-3.7
April	2.5	-14.0	9.0	-1.5
May	-6.6	3.2	-12.8	0.1
June	3.7	-3.6	-16.1	7.3

Total daily average water use in m3, 2008-2011



### Key points

In June 2012, the average water distribution in Aruba (houses, companies, hotels, government) increased by 7.3 percent compared to June 2011. With the exception of Hotels (-9.0%), water usage increases has been recorded for Houses (+15.9%), Companies (+9.1%) and Government offices (+8.5%). During the first half of 2012, the total average water distribution increased by 7.9 percent compared to the similar period of 2011.

### Average water distribution (in m<sup>3</sup>)\*

June 2012		% Change since		
		last month	last year	YTD % change
Houses	527,015	-0.4	15.9	7.6
Companies	112,387	-2.8	9.1	10.9
Hotels	227,505	0.3	-9.0	6.6
Government	19,662	-1.2	8.5	18.4
<b>Total</b>	<b>886,569</b>	<b>-0.5</b>	<b>7.3</b>	<b>7.9</b>

Source: WEB Aruba N.V., Central Bureau of Statistics Aruba

\* Calculation of drink water distribution in Aruba (in m3) is based on an average water distribution per month, excluding the distribution to Valero and vessels.

### Related statistics in this bulletin

- 2.3 Electricity distribution
- Corresponding tables

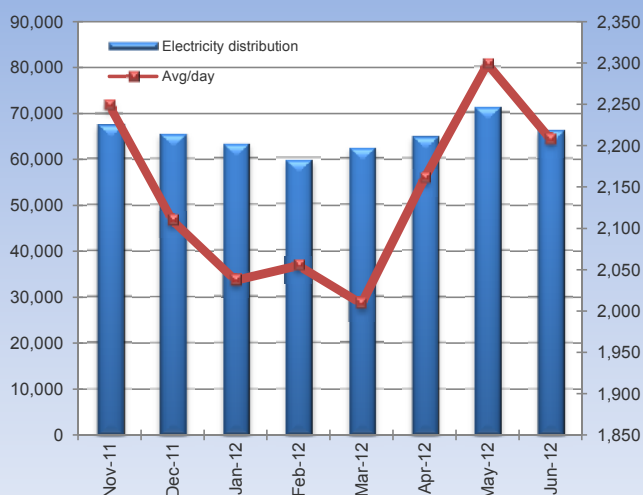
### Related statistics publications

- Economic profile
- Statistical yearbook



## 2.3 Electricity distribution

Electricity distribution (in MWh)



Month	2009	2010	2011	2012
-------	------	------	------	------

### Electricity distribution (MWh)

March	63,037	71,051	64,484	62,275
April	65,267	69,741	64,463	64,812
May	68,943	73,399	71,077	71,265
June	68,924	73,140	71,641	66,234

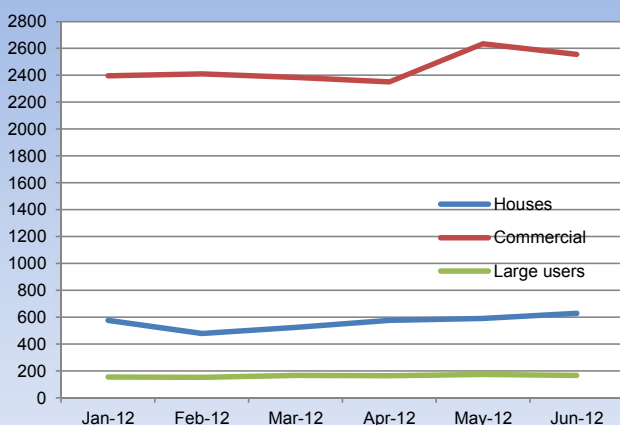
### Electricity distribution monthly %-change

March	10.5	16.3	9.4	4.5
April	3.5	-1.8	0.0	4.1
May	5.6	5.2	10.3	10.0
June	0.0	-0.4	0.8	-7.1

### Electricity distribution annual %-change

March	-2.6	12.7	-9.2	-3.4
April	-0.9	6.9	-7.6	0.5
May	0.2	6.5	-3.2	0.3
June	1.1	6.1	-2.0	-7.5

Electricity usage per connection in kWh



Large users, as in hotels, x 1,000 kWh

### Key points

In June 2012, electricity (in MWh) supplied to Elmar for distribution decreased by 7.5 percent compared to June 2011, following a drop of 2.0 percent recorded in the similar period one year earlier. In the January-to-June period of 2012, electricity distribution declined by 2.3 percent compared to the similar period of 2011.

### Electricity Consumption (MWh)

	Apr-12	May-12	Jun-12
Household	22,460	23,133	24,651
Usage per connection	575.2	591.5	629.6
Commercial	12,430	13,944	13,545
Large users	25,490	26,967	26,306
Streetlights	350	350	351
Signage	110	113	111
Churches, schools, etc.	379	457	425
<b>Total</b>	<b>61,218</b>	<b>64,965</b>	<b>65,388</b>

During the first half of 2012, the total electricity usage (as reported by the ELMAR N.V.) fell with 1.1 percent compared to the similar period of 2011. This drop is mainly caused by decreases in the usage of electricity by Households (-4.5%), Large users (-0.4%) and streetlights (-1.3%).

### Electricity Generation (MWh)\*

Year	WEB	Valero	Windpark	Total
2010	394,290	1,970	69,787	466,047
2011	386,599	1,903	64,155	452,657
2012	369,015	1,468	75,414	445,897

\* January-to-June period

### Related statistics in this bulletin

- 2.2 Water distribution
- Corresponding tables

### Related statistics publications

- Economic profile
- Statistical yearbook

### 3 Foreign trade



June 2012	Vx1,000 Afl.	Monthly % Ch	Yearly % Ch	YTD % Ch
-----------	-----------------	-----------------	----------------	-------------

#### Total import of goods to Aruba by commodity group

1. Agriculture products	58,058	-2.9	4.2	6.7
2. Mineral chemical and related products	21,017	-17.5	-18.0	2.8
3. Textiles, pearls and precious stones	12,771	-23.0	-17.6	-1.7
4. Metal products, machinery and equipment	34,873	-20.4	-14.9	-21.5
5. Other transportable goods	29,580	19.7	17.0	6.2
<b>Total Import</b>	<b>156,299</b>	<b>-8.3</b>	<b>-4.2</b>	<b>-3.3</b>

#### Total export of goods from Aruba by commodity group

1. Agriculture products	15,121	-22.5	-21.4	-11.1
2. Mineral chemical and related products	976	368.8	-23.6	69.2
3. Textiles, pearls and precious stones	1,932	-46.6	742.4	100.9
4. Metal products, machinery and equipment	1,130	-59.2	31.4	121.5
5. Other transportable goods	2,189	49.1	-7.1	307.4
<b>Total Export</b>	<b>21,349</b>	<b>-22.6</b>	<b>-10.9</b>	<b>23.8</b>



Source: Customs Aruba, Central Bureau of Statistics Aruba

### Key points

In June 2012, the total import of merchandise to Aruba declined by 4.2 percent compared to June 2011, in contrast to an increase of 23.0 percent recorded in the similar period one year earlier. With the exception of Agriculture products (+4.2%) and Other transportable goods (+17.0%), import decreases has been recorded for Mineral, chemical & related products (-18.0%), Textiles, pearls & precious stones (-17.6%) and Metal products, machinery & equipment (-14.9%).

During the first six months of 2012, the total import of goods to Aruba fell with 3.3 percent compared to the similar period of 2011.

Compared to June 2011, the total exports of goods from Aruba decreased by 10.9 percent in June 2012. With the exception of Textiles, pearls & precious stones (+742.4%) and Metal products, machinery & equipment (+31.4%), decreases in the export of goods has been recorded for Agriculture products (-21.4%), Mineral, chemical & related products (-23.6%) and Other transportable goods (-7.1%).

In the January-to-June period of 2012, the total export of goods to Aruba expanded by 23.8 percent compared to the similar period of 2011.

### Related statistics in this bulletin

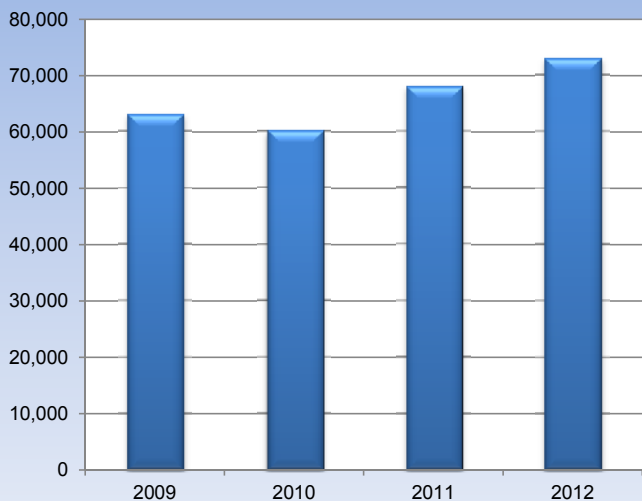
- Corresponding tables

### Related statistics publications

- Foreign Trade Statistics
- Economic profile
- Statistical yearbook

## 5 Tourism

Stay-over visitors to Aruba during the months of June



Month	2009	2010	2011	2012
-------	------	------	------	------

### Total stay-over visitors

March	67,456	77,204	76,938	80,824
April	71,621	69,157	79,589	78,160
May	61,479	64,383	65,268	66,057
June	63,117	60,173	67,999	73,073

### Stay-over visitors monthly %-change

March	0.5	14.1	11.9	11.2
April	6.2	-10.4	3.4	-3.3
May	-14.2	-6.9	-18.0	-15.5
June	2.7	-6.5	4.2	10.6

### Stay-over visitors annual %-change

March	-16.9	14.5	-0.3	5.1
April	2.5	-3.4	15.1	-1.8
May	-3.4	4.7	1.4	1.2
June	2.8	-4.7	13.0	7.5

Mar-12	Apr-12	May-12	Jun-12
--------	--------	--------	--------

### Airport arrivals

Resident	5,576	7,555	9,113	6,942
Non-resident	82,036	78,865	67,838	73,959

### Landings

Commercial landings	1,338	1,357	1,188	1,153
Non-Commercial landings	378	615	298	354

### Cruise Tourism

Cruise passengers	84,628	69,852	8,164	n.a.
-------------------	--------	--------	-------	------

### Tourism

June 2012	% Change since			YTD % change
	last month	last year		
<b>Total stay over visitors</b>	<b>73,073</b>	<b>10.6</b>	<b>7.5</b>	<b>2.2</b>
USA	45,373	4.5	4.1	-0.9
Venezuela	9,043	36.4	25.6	22.7
Colombia	2,341	138.1	-4.3	-2.1
Netherlands	2,991	-0.7	0.5	3.0
Neth. Antilles	2,725	-4.9	4.0	19.8
Canada	1,974	-11.3	42.9	0.9
Other	8,626	24.3	10.7	0.0

Source: Aruba Tourism Authority

### Key points

In June 2012, the total number of stay-over visitors to Aruba increased by 7.5 percent compared to June 2011, following a growth of 13.0 percent recorded during the similar period one year earlier. The main increases in June 2012 were recorded for the visitors from Venezuela (+25.6%), United States (+4.1%), Canada (+42.9%), United Kingdom (+26.8%) and Argentina (+60.5%).

During the first half of 2012, the total number of visitors to Aruba rose by 2.2 percent compared to the similar period of 2011. This growth is mainly caused by increases in the visitors from Venezuela (+22.7%), Argentina (+43.0%), Curacao (+21.4%), T&T (+157.6%), Netherlands (+3.0%) and Surinam (+33.6%).

The US market is the largest market, but fell from 65.8 percent in June 2011, to 63.7 percent in June 2012. The Venezuelan market, the second largest market, recorded a market share of 11.6 percent in June 2012, up from 9.7 percent in June 2011.

### Related statistics in this bulletin

- Corresponding tables

### Related statistics publications

- Tourist profile
- Economic profile
- Statistical yearbook

## Consumer Price Index

(Dec 2006=100)

Sector	May '11	June '11	May '12	June '12	YTD <sup>1</sup> 2011 in %	YTD 2012	Monthly % change	Yearly % change
Food & non-alcoholic beverages	136.2	137.3	141.1	141.3	2.8	-0.4	0.1	2.9
Alcoholic beverages & tobacco	124.0	124.3	126.5	126.8	11.1	1.9	0.3	2.0
Clothing & footwear	109.1	111.2	104.3	104.4	0.8	-4.1	0.1	-6.1
Housing	139.8	139.9	145.5	145.6	7.6	0.0	0.0	4.0
Household operation	106.2	106.0	101.7	100.9	0.3	-2.3	-0.7	-4.8
Health	91.7	91.3	93.2	93.1	-1.0	2.1	-0.1	2.0
Transport	119.6	118.2	121.9	118.6	10.0	2.3	-2.8	0.3
Communications	87.7	87.5	87.0	86.6	4.5	-0.3	-0.5	-1.0
Recreation & culture	115.7	115.4	111.6	112.2	2.6	-2.6	0.6	-2.7
Education	113.3	113.7	116.5	116.5	1.7	0.3	0.1	2.5
Restaurants & hotels	117.6	117.5	124.4	124.1	0.8	3.0	-0.2	5.6
Miscellaneous goods & services	99.5	99.6	99.7	99.7	0.8	-0.5	0.0	0.1
<b>Total Index</b>	<b>120.1</b>	<b>120.1</b>	<b>121.8</b>	<b>121.2</b>	<b>5.0</b>	<b>-0.1</b>	<b>-0.5</b>	<b>0.9</b>
Fuel Surcharge per kWh in Afl. (≤ 500 kWh)	0.32	0.32	0.32	0.32	21.1	0.0	0.0	0.0
Fuel Surcharge per kWh in Afl. (> 500 kWh)	0.32	0.32	0.38	0.38	21.1	0.0	0.0	18.4
Electricity (in Afl.) <sup>3</sup>	349.78	349.78	363.27	363.27	13.3	0.0	0.0	3.9
Aruba Gasoline (in Afl. per ltr)	2.52	2.45	2.52	2.35	24.1	7.3	-6.8	-4.0
Water (in Afl.) <sup>2</sup>	172.60	172.60	195.47	195.47	12.1	0.0	0.0	13.3
Aruba Diesel (in Afl. per ltr)	2.18	2.06	2.17	2.05	18.9	-2.6	-5.8	-0.7
US Gasoline (in \$ per ltr)	1.03	0.97	0.99	0.94	23.0	8.4	-5.2	-3.8
US Diesel (in \$ per ltr)	1.07	1.04	1.05	0.99	21.3	-2.6	-5.5	-4.4
<b>Crude Oil (in \$ per barrel)<sup>4</sup></b>								
WTI - Cushing, Oklahoma	100.90	96.26	94.66	82.30	8.0	-16.5	-13.1	-14.5
Brent, Europe	114.99	113.83	110.34	95.16	24.5	-11.8	-13.8	-16.4

## Utilities

### Electricity supplied to Elmar for distribution (in MWh)

Total average	71,077	71,641	71,265	66,234	396,283	387,332	-7.1	-7.5
---------------	--------	--------	--------	--------	---------	---------	------	------

### Water consumption (in m3)

Houses	519,118	454,764	528,920	527,015	3,085,948	3,320,259	-0.4	15.9
Companies	111,773	103,013	115,574	112,387	651,087	722,292	-2.8	9.1
Hotels	241,377	249,968	226,860	227,505	1,440,798	1,535,604	0.3	-9.0
Government	18,432	18,129	19,909	19,662	103,437	122,486	-1.2	8.5
<b>Total average</b>	<b>890,700</b>	<b>825,874</b>	<b>891,263</b>	<b>886,569</b>	<b>5,281,271</b>	<b>5,700,641</b>	<b>-0.5</b>	<b>7.3</b>

<sup>1)</sup> YTD (Year to date) refers to the period of January 1st of the current year to the month under review.

<sup>2)</sup> Based on an average per household

<sup>3)</sup> Based on an average of 725.5 kWh

<sup>4)</sup> Unweighted average of daily closing spot prices

## Foreign Trade in Merchandise (\*1,000 Afl.)

	May '11	June '11	May '12	June '12	2011	2012	Monthly % change	Yearly % change
<b>Imports of goods by commodity group</b>								
Agriculture products	58,657	55,709	59,822	58,058	320,885	342,458	-2.9	4.2
Mineral chemical and related products	27,301	25,635	25,466	21,017	145,436	149,461	-17.5	-18.0
Textiles, pearls and precious stones	15,106	15,507	16,590	12,771	103,163	101,368	-23.0	-17.6
Metal products, machinery and equipment	42,915	40,979	43,832	34,873	310,928	244,218	-20.4	-14.9
Other transportable goods	25,908	25,284	24,707	29,580	151,577	160,916	19.7	17.0
<b>Total Import</b>	<b>169,887</b>	<b>163,113</b>	<b>170,417</b>	<b>156,299</b>	<b>1,031,989</b>	<b>998,421</b>	<b>-8.3</b>	<b>-4.2</b>
<b>Exports of goods by commodity group</b>								
Agriculture products	23,838	19,236	19,522	15,121	115,425	102,562	-22.5	-21.4
Mineral chemical and related products	963	1,278	208	976	3,287	5,561	368.8	-23.6
Textiles, pearls and precious stones	5,220	229	3,617	1,932	12,013	24,137	-46.6	742.4
Metal products, machinery and equipment	2,062	860	2,773	1,130	7,506	16,626	-59.2	31.4
Other transportable goods	798	2,356	1,468	2,189	7,828	31,893	49.1	-7.1
<b>Total Export</b>	<b>32,882</b>	<b>23,958</b>	<b>27,588</b>	<b>21,349</b>	<b>146,059</b>	<b>180,780</b>	<b>-22.6</b>	<b>-10.9</b>

## Tourism

	May '11	June '11	May '12	June '12	YTD <sup>1</sup> 2011	YTD 2012	Monthly % change	Yearly % change
<b>Total stay over visitors</b>								
USA	43,870	43,586	43,400	45,373	284,931	282,251	4.5	4.1
Venezuela	5,127	7,202	6,630	9,043	41,829	51,326	36.4	25.6
Colombia	994	2,445	983	2,341	8,244	8,071	138.1	-4.3
Netherlands	3,032	2,975	3,013	2,991	19,392	19,978	-0.7	0.5
Neth. Antilles	1,758	2,621	2,865	2,725	10,824	12,969	-4.9	4.0
Canada	2,645	1,381	2,225	1,974	25,108	25,336	-11.3	42.9
Other	7,842	7,789	6,941	8,626	42,844	42,859	24.3	10.7
<b>Airport Traffic</b>								
<b>Total landings</b>	<b>1,354</b>	<b>1,518</b>	<b>1,486</b>	<b>1,507</b>	<b>9,677</b>	<b>9,992</b>	<b>1.4</b>	<b>-0.7</b>
Commercial landings	1,149	1,313	1,188	1,153	7,629	7,472	-2.9	-12.2
Non-commercial landings	205	205	298	354	2,048	2,520	18.8	72.7
<b>Passenger Traffic</b>								
<b>Total arrivals</b>	<b>75,224</b>	<b>75,940</b>	<b>76,951</b>	<b>80,901</b>	<b>480,924</b>	<b>496,043</b>	<b>5.1</b>	<b>6.5</b>
Arrival locals	10,987	7,328	9,113	6,942	43,809	43,726	-23.8	-5.3
Arrival visitors	64,237	68,612	67,838	73,959	437,115	452,317	9.0	7.8

## Cruise tourism

	May '11	June '11	May '12	June '12	YTD <sup>1</sup> 2011	YTD 2012	Monthly % change	Yearly % change
Cruise passengers	15,415	8,997	8,164	n.a.	377,857	n.a.	n.a.	n.a.
Cruise calls	14	6	3	n.a.	210	n.a.	n.a.	n.a.
Crew members	7,450	3,581	2,911	n.a.	158,666	n.a.	n.a.	n.a.

<sup>1)</sup> YTD (Year to date) refers to the period of January 1st of the current year to the month under review. This period is compared to the same period of the previous year.

<sup>5)</sup> AZV and AOV/AWW are not included.